

Fig. 2. Survival of 'Gala' on 18 dwarfing rootstocks to a severe fire blight infection in their third leaf. Mean separation using logistic regression ($P = 0.05$).

The ultimate solution to the loss of trees due to fire blight infection in the rootstock is to use resistant rootstocks coupled with resistant scion cultivars. It is hoped that some of the Vineland, Geneva, or other rootstock series will prove to have the necessary desirable horticultural characteristics, as well as resistance so that this problem can be avoided in the future.

Literature cited

Autio, W.R., J.L. Anderson, J.A. Barden, G.R. Brown, R.M. Crassweller, P.A. Domoto, A. Erb, D.C. Ferree, A. Gaus, R.A. Hayden, P. Hirst, F. Morrison, C.A. Mullins, J.R. Schupp, and L.D. Tukey. 2001. Performance of 'Golden Delicious', 'Jonagold', 'Empire', and 'Rome Beauty' apple trees on five rootstocks over ten years in the 1990 NC-140 cultivar/rootstock trial. *J. Amer. Pomol. Soc.* 55:131-137.

Cline, J.A., D.M. Hunter, W.G. Bonn, and M. Bijl. 2001. Resistance of the Vineland series of apple rootstocks to fire blight cause by *Erwinia amylovora*. *J. Amer. Pomol. Soc.* 55:218-221.

Ferree, D.C., M.A. Ellis, and F.R. Hall. 1983. Tree loss due to fire blight infection of rootstocks and interstems in Ohio apple orchards. *Compact Fruit Tree* 16:116-120.

Ferree, D.C., P.M. Hirst, J.C. Schmid, and P.E. Dotson. 1995. Performance of three apple cultivars with 22 dwarfing rootstocks during 8 seasons in Ohio. *Fruit Var. J.* 49(3):171-178.

Jones, A. 2001. Michigan growers face challenge to control fire blight. *Fruit Growers News* (May) V40:46-49.

Marini, R.A., J.L. Anderson, W.R. Autio, B.H. Barritt, J.A. Cline, W. P. Cowgill, Jr., R.M. Crassweller, P.A. Domoto, D.C. Ferree, J. Garner, A. Gaus, G.M. Greene, C. Hampson, P. Hirst, M.M. Kushad, E. Mielke, C.A. Mullins, M. Parker, R.L. Perry, J.P. Prive, G.L. Reighard, T. Robinson, C.R. Rom, T.R. Roper, J.R. Schupp, E. Stover, and R. Unrath. 2000. Performance of 'Gala' apple on 18 dwarf rootstocks: Five-year summary of the 1994 NC-140 dwarf rootstock trial. *J. Amer. Pomol. Soc.* 54:92-107.

NC-140. 1996. Rootstock and scion cultivar interact to affect apple tree performance: A five-year summary of the 1990 NC-140 cultivar/rootstock trial. *Fruit Var. J.* 50:175-187.

Perry, R.L. 1992. The relative susceptibility of rootstocks to fire blight. *Proc. Mich. State Hort. Soc.* 122:72-75.

Perry, R.L. 1993. Apple rootstock studies in Michigan. *Compact Fruit Tree* 26:97-99.

Sparks, B. 2001. Fire blights destructive path. *Amer. Fruit Grower* 121(3):11-16.

Concentration by Time Product and Gas Penetration after Marine Container Fumigation of Table Grapes with Reduced Doses of Sulfur Dioxide

Carlos H. Crisosto,¹
Lluís Palou,² David Garner,³
and Donald A. Armson⁴

ADDITIONAL INDEX WORDS. *Vitis vinifera*, export markets, gray mold, *Botrytis cinerea*, sulphur dioxide, total utilization SO_2 fumigation

SUMMARY. Reduced doses of sulfur dioxide (SO_2) were evaluated for the fumigation of marine containers with respect to the concentration \times time (CT) product and gas penetration. Two commercial export containers were loaded at 32 °F (0 °C) with 20 metric pallets [40 \times 48 inches (102.5 \times 123.1 cm)] comprised of 72 expanded polystyrene foam boxes (12 tiers, 6 boxes/tier) of table grapes (*Vitis vinifera*) and fumigated with 1.0 and 0.5 lb (0.454 and 0.227 kg) SO_2 , respectively. A third marine container was loaded with 20 metric pallets comprised of 84 plastic boxes of table grapes (14 tiers, 6 boxes/tier) and fumigated with 0.25 lb (0.113 kg) SO_2 . The boxes contained 16 lb (7.3 kg) of table grapes distributed in nine polyethylene cluster bags

Dept. of Pomology, University of California, Davis, Kearney Agricultural Center, 9240 South Riverbend Ave., Parlier, CA 93648.

We thank the California Table Grape Commission for financial support and Gerawan Farming (Reedley, Calif.) for providing the fruit and the export containers and allowing us to use their facilities.

¹Postharvest physiologist; corresponding author, e-mail: carlos@uclark.edu.

²Postharvest pathologist.

³Staff research associate.

⁴Warehouse manager, Gerawan Farming Inc., P.O. Box 1249, Reedley, Calif.

enclosed in a perforated polyethylene box liner. Fumigations were performed through the bottom seal of the rear door from pre-weighed compressed SO₂ cylinders. CT product was calculated after taking samples of the atmosphere in the container every 5 to 10 min and measuring the ambient SO₂ concentration with a gas sampling pump and colorimetric dosimeter tubes. Pallet and box penetration of the gas was assessed by placing passive colorimetric SO₂ dosimeters inside the cluster bags in boxes located in both the third and ninth center boxes from the top of pallets located in the front, center, and rear of the load. Fumigations with 1.0, 0.5, and 0.25 lb SO₂, with calculated CT products at 32 °F of 925, 360, and 40 ppm-h ($\mu\text{L}\cdot\text{L}^{-1}\cdot\text{h}^{-1}$) respectively, were found to provide excessive, adequate, and insufficient SO₂ doses.

Export markets for California table grapes are often located at least 10 d away by overseas transport and most of the produce is shipped in refrigerated marine containers. Shipments in 1999 totaled 84.1 million 21-lb (9.53-kg) carton-equivalent units (Cook, 2000). Gray mold, caused by *Botrytis cinerea*, is one of the most significant problems limiting quality of shipped produce (Capellini et al., 1986; Nelson, 1991). Control of gray mold during cold storage of table grapes is achieved by fumigations with sulfur dioxide (SO₂), a practice that has been used in California for more than 70 years (Nelson, 1985). An initial sulfur dioxide treatment can kill fungal inoculum present on the fruit surface, but subsequent periodic fumigations are needed to prevent gray mold nesting caused by mycelial spread from infected berries to adjacent healthy berries (Nelson, 1985).

Usual handling of table grapes for shipment is as follows: fruit are selected, classified into quality categories, packed in boxes, and palletized in the field, then transported to the packinghouse, pre-cooled as soon as possible, treated with gaseous SO₂, and held at about 32 °F and high relative humidity (RH) until the container is loaded. Pallets are normally refumigated weekly during the cold storage period. It has been recommended to perform, when possible, pre-cooling and initial SO₂ fumigation simultaneously in a forced-air precooling room under the total utilization system. This method uses about 75% less SO₂

than traditional initial fumigations (Luvisi et al., 1992). In most cases, loaded containers are gassed again at the loading point (shipping) in a last effort to assure a good arrival. In other cases, grapes may be packed with a two-phase in-package SO₂ generating pad and shipped without an initial fumigation. However, recent studies (Crisosto et al., 1994, 2000) showed that in California this procedure is not as effective in controlling decay as the application of an initial fumigation to fruit packed with a vented plastic box liner and a slow-release generator.

The action of SO₂ during fumigation is described in terms of the toxic concentration and the amount of time that the gas remains in contact with the target organism. These factors are multiplied and the gas doses are expressed by the CT product (concentration \times time, typically measured in ppm-h) (Luvisi et al., 1992; Smilanick and Henson, 1992).

Sulfite residues and phytotoxicity (bleaching of fruit color and hairline splits) are the main problems associated with sulfur dioxide fumigations. In 1986, a residue tolerance of 10 ppm ($\mu\text{g}\cdot\text{g}^{-1}$) sulfite on table grapes was established by the US Environmental Protection Agency (EPA) (EPA, 1986). Bleaching occurs when the gas is released at excessive concentrations and penetrates into the stem end or through lenticels or skin wounds, causing bleached or sunken areas (Ryall and Harvey, 1959). Hairline splits on the berry surface appear to be related to excessive sulfur dioxide doses. Symptoms are microscopic longitudinal splits often followed by exudation of pulp juice (Santiago and Hanke, 2000; Zoffoli et al., 2000a).

Cylinders of compressed SO₂ (pressurized liquid gas) are used in California for storage and container fumigation. The rates for SO₂ use in containers in commercial use today were adapted from those originally developed for railcars (Jacob, 1929). These very high rates were developed to overcome densely packed wood boxes, and poor ventilation. For example, Uota and Harvey (1964) stated that 3 to 5 lb (1.36 to 2.27 kg) of SO₂ were commonly used commercially to fumigate railcars of 2,360 ft³ (66.83 m³) capacity typically containing about 1000 boxes of 20 to 24 lb (9.07 to 18.14 kg) each. They found that even at these high fumigation rates, high rates of air movement and ventilation channels were needed

among the boxes. No similar research characterizing SO₂ distribution, residues, or bleaching injury with modern refrigerated containers has been done. We believe that a correct balance between decay control, SO₂ residues and fruit injury could be maintained with the application of lower SO₂ doses whenever the gas is uniformly distributed within the container. Our objective was to measure actual CT and SO₂ distribution following marine container fumigations with low amounts of SO₂.

Materials and methods

Three trials with commercial marine containers were conducted during the 1999 and 2000 table grape seasons in the San Joaquin Valley (California). In every case, loading and fumigation techniques followed common export commercial procedures in use today in California. In the first trial, a 2,377 ft³ (66.14 m³) refrigerated export container (Maersk Container Industri AS, Tinglev, Denmark) was loaded with 20 metric pallets comprised of 72 expanded polystyrene foam boxes of table grapes (12 tiers, 6 boxes/tier) and fumigated with 1 lb SO₂. In the second trial, a 2,366 ft³ container (65.84 m³; Maersk Container Industri AS, Tinglev, Denmark) was loaded with 20 metric pallets comprised of 72 expanded polystyrene foam boxes (12 tiers, 6 boxes/tier) and fumigated with 0.5 lb SO₂. And in the third trial, a 2,352 ft³ container (65.45 m³; Maersk Container Industri AS) was loaded with 20 metric pallets comprised of 84 plastic boxes (14 tiers, 6 boxes/tier) and fumigated with 0.25 lb SO₂. The following methodology was common to all three trials.

CONTAINER LOADING. The metric pallets were pinwheeled into the container in the packinghouse cold storage facilities. An additional tier of boxes was added to the top of the pallets to bring the load to within 6 inches (15.4 cm) of the limit line. The packages were commercial 16-lb (7.3 kg) boxes containing nine polyethylene cluster bags of 'Redglobe', 'Ruby Seedless' and/or 'Red Seedless' table grapes with a slow-release SO₂ pad, all enclosed in a microperforated polyethylene box liner (1.2% vented area). The pinwheeled loading pattern left no more than 1 inch (2.6 cm) of clearance between pallets or between the pallets and sidewalls. There were about 10 inches (25.6 cm) of uncovered floor at the rear of the container. The container drain holes and air

exchange vent were closed for fumigation.

FUMIGATION. The targeted amount of SO_2 was introduced into the container from pre-weighed compressed gas cylinders (Fruit Doctor; Snowden Enterprises Inc., Fresno, Calif.) through a plastic tube inserted under the rear door bottom seal. The temperature in the container during loading and fumigation was set at 32 °F. A fan located in the front bulkhead distributed the gas in the container. Cold air was delivered through T-channels in the floor of the container, forced up through the boxes of fruit, and then returned to the refrigeration unit at the top of the front bulkhead. The introduction of the gas lasted no more than 5 min. About 70 or 95 min after fumigation, the container was vented by opening the air exchange vent as well as the rear door. Cold air circulation was not stopped during venting and SO_2 concentration in the container dropped to near zero after 10 to 15 min of venting.

DETERMINATION OF FUMIGATION EFFICIENCY. The SO_2 concentration in the container was measured by withdrawing air samples through plastic tubing placed at the bottom rear pallet position, then fed out under the rear door seal. Sampling was performed first just after introduction of the gas and every 5-10 min thereafter. The samples were analyzed using a gas-sampling pump (model 8014-400A; SE certified model 42CFR84; Matheson Kitagawa, East Rutherford, N.J.) and various colorimetric dosimeter tubes with detection limits from 1.25 to 3,600 ppm (1 ppm = 2.62 mg·m⁻³) SO_2 (Gastec-Sensidyne No. 5L, 5D, and 5M; Gastec Corp., Fukaya, Ayase-City, Japan). Data on SO_2 concentration over time were used to calculate the container's CT according to the procedure described by Luvisi et al. (1992).

The amounts of SO_2 surrounding the grapes were measured by placing passive colorimetric dosimeter tubes (Gastec-Sensidyne Nos. 5D and 5DH; Gastec Corp.) within the cluster bags that contained the fruit in boxes placed in the front (second row from bulkhead), center (fourth row from bulkhead), and rear (eighth row from bulkhead, third from rear doors) of the load. Two different passive tubes were used in each sampled bag. One 5D tube (detection limits of 0 to 100 ppm-h) and one 5DH tube (detection limits of 10 to 600 ppm-h) were placed in both the

third and ninth center box from the top of each pallet (including the additional top box). Passive dosimeters were placed in center boxes as recommended for in-box CT determination by Luvisi et al. (1992). After venting, the container was unloaded and the passive dosimeters recovered. The container was then loaded again and shipped to destination.

Results

1-LB SO_2 FUMIGATION. The concentration of SO_2 measured in the container was 1,500 ppm 5 min after gas introduction. This concentration decreased to 250 ppm after 90 min (Fig. 1). Based on the measurements performed 5, 15, 20, 30, 40, 50, 70, and 90 min after the injection of the gas (Fig. 1), the calculated container's CT from the 1-lb fumigation in the 2,377-ft³ container was 925 ppm-h.

After 95 min of exposure, the container was vented, unloaded and the passive dosimeters checked. At all of the sampling positions the 5D tubes (detection limits of 0 to 100 ppm-h) were completely saturated. With the exception of the rear top and rear bottom pallet positions, the 5DH tubes (detection limits of 10 to 600 ppm-h) measured a dose higher than 600 ppm-h. The rear top and rear bottom pallet positions measured 400 and 350 ppm-h, respectively (Table 1).

0.5-LB SO_2 FUMIGATION. The concentration of SO_2 measured in the container was 1,000 ppm 5 min after gas introduction. This concentration decreased to 200 ppm after 70 min (Fig. 1). Based on the measurements performed 5, 10, 15, 20, 25, 30, 35, 40, 45, 50, 55, 60, and 70 min after

the injection of the gas (Fig. 1), the calculated container's CT from the 0.5-lb fumigation in the 2,366-ft³ container was about 360 ppm-h.

After 70 min of exposure, the container was vented, unloaded and the passive dosimeters checked. At all of the sampling positions the 5D tubes were completely saturated. With the exception of the rear top and rear bottom pallet positions, the 5DH tubes measured from 400 to 250 ppm-h depending upon pallet and box position. The rear pallet position, bottom box recorded the lowest dose at 250 ppm-h (Table 1).

0.25-LB SO_2 FUMIGATION. The concentration of SO_2 measured in the container was 100 ppm 5 min after gas introduction. This concentration decreased to 5 ppm after 70 min (Fig. 1). Based on the measurements performed 5, 8, 15, 20, 38, 47, 60, and 70 min after the injection of the gas (Fig. 1), the calculated container's CT from the 0.25-lb fumigation in the 2,352-ft³ container was about 40 ppm-h.

After 70 min of exposure, the container was vented, unloaded and the passive dosimeters checked. At all of the sampling positions the 5D tubes measured from 40 to 7 ppm-h depending upon pallet and box position. The top boxes at the center and rear pallet positions recorded the lowest doses at 7 ppm-h (Table 1).

Fig. 1. Sulfur dioxide (SO_2) concentrations [ppm ($\mu\text{L}\cdot\text{L}^{-1}$)] measured in air samples from a marine container loaded with table grapes withdrawn during fumigation with 1.0, 0.5, or 0.25 lb (0.454, 0.227, or 0.113 kg) of gas. Air samples were taken from the bottom rear pallet position.

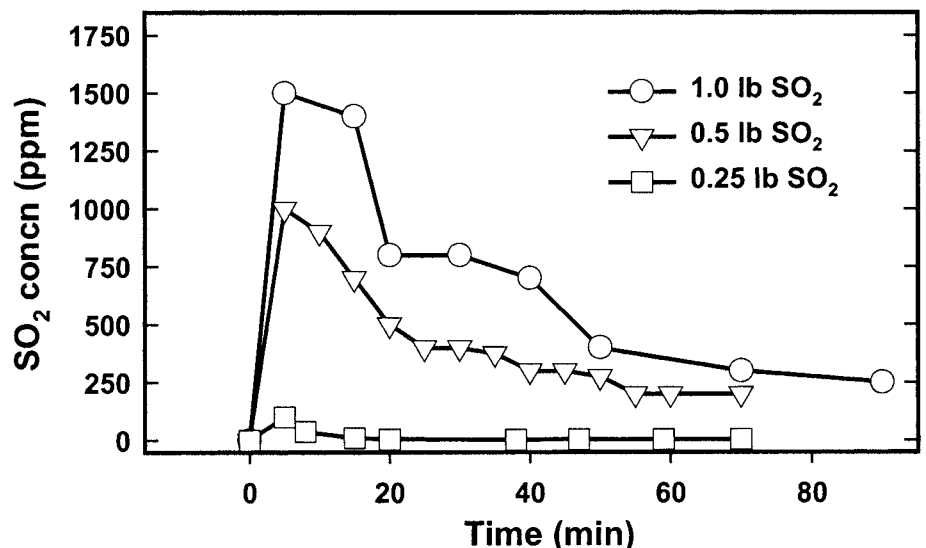


Table 1. Sulfur dioxide (SO₂) doses (concentration × time) in expanded polystyrene foam or plastic boxes containing fruit in cluster bags enclosed in perforated box liners that had been palletized and loaded into a marine container and fumigated with 1.0, 0.5, or 0.25 lb (0.454, 0.227, or 0.113 kg) of gas.

Pallet position	Box position	SO ₂ dose [ppm-h (μL·L ⁻¹ ·h ⁻¹)]		
		1.0 lb SO ₂ ^z	0.5 lb SO ₂ ^z	0.25 lb SO ₂ ^y
Rear	Top	400	400	7
Rear	Bottom	350	250	10
Center	Top	>600	350	7
Center	Bottom	>600	350	15
Front	Top	>600	400	30
Front	Bottom	>600	375	12

^zExpanded polystyrene foam boxes; SO₂ measured using Gastec-Sensidyne 5DH passive dosimeter tubes (Gastec Corp., Fukaya, Ayase-City, Japan).

^yPlastic boxes; SO₂ measured using Gastec-Sensidyne 5D passive dosimeter tubes.

Discussion

The purpose of the SO₂ container fumigation of table grapes is to maximize decay control while minimizing losses due to SO₂ damage in order to adequately preserve the fruit during shipping and offer high quality produce in the arrival markets. At 32 °F, a CT product of at least 100 ppm-h in the air spaces surrounding the berries kills both the spores and the mycelia of *B. cinerea* (Smilanick and Henson, 1992; Luvisi et al., 1992). This CT dose can be obtained with an average concentration of 100 ppm for 1 h, 200 ppm for 0.5 h, or 25 ppm for 4 h, or an equivalent combination of concentration and time. However, gaseous SO₂ should be applied at higher doses to ensure that at least such a minimum effective dose reaches the atmosphere surrounding the grapes. Sorption of the gas by fruit and packaging materials and resistance of the load to gas penetration force the use of higher SO₂ doses. Gas dose, however, has to be low enough to cause minimal phytotoxicity and to keep sulfite residues under regulatory tolerances. These problems have led investigators to search for fumigation technologies that can effectively use reduced levels of SO₂ (Luvisi et al., 1992; Marois et al., 1986). Alternatives to the use of SO₂ such as chlorine dioxide, carbonates, ethanol or ozone are also being evaluated (Crisosto and Smilanick, 2000; Palou et al., 2001).

Multiple factors influence the distribution and penetration of SO₂ during fumigation. The type of container, number and position of fans, and location of channels where the air is allowed to circulate influence how the

gas is distributed in and around the load (Luvisi et al., 1995; Uota and Harvey, 1964). An additional amount of fumigant would be required when there is water condensation in the container because considerable proportions of the gas are readily absorbed by free water (Uota and Harvey, 1964). We did not observe water condensation in these trials. Concentration of SO₂ also depends on the position of the pallet in the container and on the position of the box in the pallet. In our trials, penetration at the rear bottom position was in general lower than at the center or the front. This may be due to leaving the small portion of floor near the rear doors uncovered. The packaging materials also have a great influence on SO₂ penetration. Luvisi et al. (1992) observed that SO₂ penetration was higher in foam boxes than in wood-end [Technical Kraft Veneer (TKV)] and corrugated boxes, and higher in wood-end than in corrugated boxes. In their experiments, gas penetration in boxes with fruit in plastic cluster bags (without box liners) was not retarded when compared to gas penetration in boxes with plain-packed grapes. In laboratory experiments, grapes packed in expanded polystyrene foam boxes sorbed ca. 50% less SO₂ as did those in wood-end boxes; grapes in fiberboard boxes sorbed ca. 50% more SO₂ than did those in wood-end boxes (Harvey et al., 1988). We used polystyrene and plastic boxes, which are materials that sorb little SO₂ (Harvey et al., 1988). For that reason, we assume that CT and SO₂ distribution with either material would not differ substantially.

Our results showed that the 1-lb SO₂ container fumigation, with a cal-

culated CT of 925 ppm-h and a dose higher than 600 ppm-h in most of the box positions, under the experimental conditions, was an excessive dose for the purposes of the treatment. This rate may induce berry bleaching and rachis pitting in susceptible cultivars. A level of sulfite residues higher than the tolerance of 10 ppm may also be of concern. Therefore, worse consequences on fruit quality should be expected from container fumigations of 3 to 5 lb, and even worse when the produce have already received an initial fumigation and multiple SO₂ gassings during the cold storage period prior to this container fumigation. Furthermore, because the grapes were packed with plastic bags and box plastic liners and these materials certainly reduced the amount of gas that contacted the fruit, the negative effects of the treatment at these rates would be even greater on plain-packed grapes. In contrast, the 0.25 lb SO₂ fumigation did not generate a sufficient dose (40 ppm-h) in the well-vented plastic boxes tested. This dose is lower than the minimum acceptable level of 100 ppm-h necessary to effectively control gray mold (Smilanick and Henson, 1992) and thus cannot be recommended. A dose of about 360 ppm-h was obtained after fumigating a container of foam boxes with 0.5 lb of SO₂. Under the conditions of our trial, this dose could be appropriate to maintain a balance between decay control and SO₂ damage and residues.

Literature cited

- Capellini, R.A., M.J. Ceperonis, and G.W. Lightner. 1986. Disorders in table grape shipments to the New York market, 1972–1984. *Plant Dis.* 70:1075–1079.
- Cook, R. 2000. Selected commodity trends: Snapshots of the California fresh table grape and orange industries. *Perishables Handling Quarterly* 103:6–10.
- Crisosto, C.H., D. Garner, L. Palou, P. Metheny, J.L. Smilanick, D.A. Luvisi, D. Armson, and D. Corey. 2000. Assuring good arrivals of California table grapes in export markets. *Calif. Table Grape Comm. Res. Rpt.* 28.
- Crisosto, C.H. and J.L. Smilanick. 2000. New table grape postharvest technologies. *Proc. 4th Int. Symp. Table Grape.* 28 Nov.–1 Dec., La Serena, Chile. p. 179–192.
- Crisosto, C.H., J.L. Smilanick, N.K. Dokoozlian, and D.A. Luvisi. 1994. Main-

taining table grape postharvest quality for long distance markets. Proc. Int. Symp. Table Grape Production. 28–29 June, Anaheim, Calif. p. 195–199.

Harvey, J.M., C.M. Harris, T.A. Hanke, and P.L. Hartsell. 1988. Sulfur dioxide fumigation of table grapes: relative sorption of SO₂ by fruit and packages, SO₂ residues, decay, and bleaching. Amer. J. Enol. Viticult. 39:132–136.

Jacob, H.E. 1924. The use of sulfur dioxide in shipping grapes. Univ. Calif., Berkeley, Bul. 471.

Luvisi, D.A., H.H. Shorey, J.L. Smilanick, J.F. Thompson, B.H. Gump, and J. Knutson. 1992. Sulfur dioxide fumigation of table grapes. Bulletin 1932. Univ. Calif. Div. Agr. Natural Resources, Oakland.

Luvisi, D.A., H.H. Shorey, J.F. Thompson, T. Hinsch, and D. Slaughter. 1995. Packaging California table grapes. Univ. Calif. Div. Agr. Natural Resources, Oakland, Bul. 1934.

Marois, J.J., A.M. Bledsoe, W.D. Gubler, and D.A. Luvisi. 1986. Control of *Botrytis cinerea* on grape berries during postharvest storage with reduced levels of sulfur dioxide. Plant Dis. 70:1050–1052.

Nelson, K.E. 1985. Harvesting and handling California table grapes for market. Univ. Calif. Div. Agr. Natural Resources, Oakland, Bul. 1913.

Nelson, K.E. 1991. The grape, p. 125–167. In: N.A.M. Eskin (ed.). Quality and preservation of fruit. CRC Press, Boca Raton, Fla.

Palou, L., C.H. Crisosto, J.L. Smilanick, J.E. Adaskaveg, and J.P. Zoffoli. 2001.

Effects of continuous 0.3 ppm ozone exposure on decay development and physiological responses of peaches and table grapes in cold storage. Postharvest Biol. Technol. (in press).

Ryall, A.L. and J.M. Harvey. 1959. The cold storage of vinifera table grapes. USDA Agr. Hdbk. 159.

Santiago, M.S. and T.A. Hanke. 2000. Comparison between two different types of SO₂ pads on 'hairline' split level of table grapes cv. Thompson Seedless. Proc. 4th Int. Symp. Table Grape. 28 Nov.–1 Dec., La Serena, Chile. p. 97.

Smilanick, J.L. and D.J. Henson. 1992. Minimum gaseous sulphur dioxide concentration and exposure periods to control *Botrytis cinerea*. Crop Protection 11:535–540.

United States Environmental Protection Agency. 1986. Interim policy for sulfiting agents on grapes. Fed. Reg. 51:47240–47241.

Uota, M. and J.M. Harvey. 1964. Improved sulfur dioxide fumigation of grapes loaded in railway refrigerator cars. USDA Mkt. Res. Rpt. 642.

Zoffoli, J.P., J. Rodríguez, and E. Koehler. 2000. Puntos críticos en el manejo de postcosecha de uva de mesa—Efecto en la condición del racimo, p. 135–150. In: J. Pérez, S. Barros, M.C. Peppi, A. Pérez, and A. Vargas (eds.). Calidad y Condición de Llegada a los Mercados Extranjeros de la Uva de Mesa de Exportación Chilena. Colección de Extensión. Pontificia Universidad Católica de Chile, Facultad de Agronomía e Ingeniería Forestal (in Spanish).

Legume and Grass Cover Crops for Seedless Watermelon Production

M. Rangappa,¹ A.A. Hamama, and H.L. Bhardwaj

ADDITIONAL INDEX WORDS. crimson clover, hairy vetch, rye, *Secale cereale*, *Trifolium incarnatum*, *Vicia villosa*, nitrogen fertilizer

SUMMARY. Although there is increasing interest in reducing the use of nitrogen (N) fertilizers due to the potential of unused N causing pollution of surface and groundwater, N is a major nutrient for plant growth. Our objective was to determine the potential of using winter legume cover crops to meet the N needs of seedless watermelon (*Citrullus lanatus*), a potential cash crop for farmers in Virginia. Fruit number, fruit weight, fruit yield, and fruit quality traits (flesh to rind ratio, water content, total soluble solids, sugar content, and pH) of seedless watermelons were evaluated in replicated experiments in Virginia at three locations during 1997–98 and two locations during 1998–99 following cover crop treatments consisting of crimson clover (*Trifolium incarnatum*), hairy vetch (*Vicia villosa*), crimson clover + rye (*Secale cereale*), hairy vetch + rye, and a bare-ground control treatment that received 100 lb/acre (112 kg·ha⁻¹) of N. At all five locations, the bare-ground control treatment resulted in fewer fruit [1803 fruit/acre (4454 fruit/ha)], lower fruit weight [9.8 lb (4.5 kg)], and lower fruit yield [8.9 tons/acre (20.0 t·ha⁻¹)] compared to the four cover crop treatments. The crimson clover + rye and hairy vetch treatments resulted in highest number

Agricultural Research Station, Virginia State University, Petersburg, VA 23806.

Contribution of Virginia State University, Agricultural Research Station, journal article series 221. The use of trade names or vendors does not imply approval to the exclusion of other products or vendors that may also be suitable.

*Corresponding author: e-mail mrangapp@vsu.edu.