

***Colusa County***  
***Department of Agriculture***  
**2007 Crop Report**



***Harry A. Krug***  
***Agricultural Commissioner***

COLUSA COUNTY  
DEPARTMENT OF AGRICULTURE  
**HARRY A. KRUG**  
AGRICULTURAL COMMISSIONER/SEALER OF WEIGHTS AND MEASURES  
100 SUNRISE BLVD., SUITE F  
COLUSA, CA 95932  
530-458-0580

TO: Mr. A. G. Kawamura, Secretary  
California Department of Food and Agriculture  
and The Honorable Board of Supervisors, Colusa County

In accordance with the provisions of Section 2279, of the California Food and Agricultural Code, I am pleased to submit the 2007 Colusa County Crop Report.

The 2007 crop year total county production value was \$484,525,000, which was another record high and exceeds last year's value of \$422,729,000.

The county's largest crop, rice, had an increase in value from 2006 with a total 2007 value of \$188,027,000. This was due to an increase in acres, production and unit price. Almonds, second in county ranking, continue to increase with a 2007 value of \$122,667,000. This was a result of an increase in acreage and production, but a decrease in unit value. Processing tomatoes remained third in ranking with a slight increase in value of \$45,634,000 compared to the 2006 value of \$42,427,000. This was a result of a decrease in acreage and an increase in production and unit value. Wheat and Corn made the top ten list with values of \$9,893,000 and \$6,163,000 respectively due to large increases in production acreage. Seed crop production remained fairly steady from a total 2006 dollar value of \$31,958,000 to a 2007 value of \$30,783,000. Rice seed had the largest increase with a value of \$12,325,000 compared to \$8,279,000 due to increase in acreage, production and unit value.

I must stress that these figures show gross values only, and do not reflect a net return to the producer.

I wish to thank everyone who contributed to this report. I also express appreciation to all of my staff, especially Jon Richter, Assistant Agricultural Commissioner, who compiled this report.

Respectfully submitted,

Harry A. Krug  
Agricultural Commissioner

# COLUSA COUNTY DEPARTMENT OF AGRICULTURE ANNUAL CROP REPORT 2007

## 2007 COUNTY BOARD OF SUPERVISORS

Mark D. Marshall, Chairperson

Kim Vann, District 1  
Thomas Indrieri, District 2

Gary J. Evans, District 4  
Dan Yerxa, District 5

## OFFICE PERSONNEL

Harry A. Krug	Agricultural Commissioner
Jon Richter	Assistant Agricultural Commissioner
Mary Anne Azevedo	Agricultural Biologist and Standards Officer III
R. Scott Kittle	Agricultural Biologist and Standards Officer III
Jack de Wit	Agricultural Biologist and Standards Officer III
David Brown	Agricultural Biologist and Standards Officer III
Thomas Moss	Agricultural Biologist and Standards Officer III
Brent Calloway	Agricultural Biologist and Standards Officer I
Renee McCormick	Fiscal Administrative Officer
Carla Hendy	Administrative Secretary II
Lee Ann Price	Account Clerk III
Jen Ziglar	Office Assistant

### APIARY PRODUCTION AND VALUE 2007 - 2006

	YEAR	PRODUCTION	UNIT	PER UNIT	VALUE TOTAL
HONEY <sup>1</sup>	2007	12,000	Lb.	\$1.50	\$18,000
	2006	10,000	Lb.	0.90	9,000
PACKAGE BEES <sup>2</sup>	2007	6,000	Lb.	10.00	60,000
	2006	5,000	Lb.	10.00	50,000
POLLINATION <sup>3</sup>	2007	62,000	Colony	98.50	6,107,000
	2006	58,000	Colony	91.40	5,301,000
QUEENS	2007	39,000	Each	15.00	585,000
	2006	19,000	Each	15.00	285,000
TOTAL	2007				\$6,770,000
	2006				5,645,000



1 Honey produced by 17,100 colonies in 2007 and 17,400 colonies in 2006, owned by resident beekeepers.

2 Includes bulk bees and nuclei.

3 Pollination colonies include all required to pollinate crops grown in Colusa County.

## VEGETABLE CROPS

### ACREAGE, PRODUCTION AND VALUE 2007- 2006

CROPS	ACREAGE		PRODUCTION			VALUE	
	YEAR	HARVESTED	PER ACRE	TOTAL	UNIT	PER UNIT	TOTAL
TOMATOES-PROCESSING	2007	16,500	43.9	724,350	Ton	\$63.00	\$45,634,000
	2006	18,400	37.8	695,520	Ton	61.00	42,427,000
MISCELLANEOUS	2007 <sup>1</sup>	110	-----	-----	-----	-----	3,323,000
	2006 <sup>2</sup>	85	-----	-----	-----	-----	92,000
TOTAL	2007	16,610					\$48,957,000
	2006	18,485					42,519,000

<sup>1</sup> Includes beans, bell pepper, cucumbers, melons, mushrooms, okra, peas, pumpkins, radish squash, sweet corn, swiss chard, tomatoes, turnips and watermelon.

<sup>2</sup> Includes bell pepper, cucumbers, melons, okra, peach, pumpkins, radish, squash, sweet corn, swiss chard, tomatoes, turnips and watermelon.



## FRUIT AND NUT CROPS

### ACREAGE, PRODUCTION AND VALUE 2007 - 2006

CROP	YEAR	ACREAGE		PRODUCTION			VALUE	
		HARVESTED	PER ACRE	TOTAL	UNIT	PER UNIT	TOTAL	
ALMONDS - MEATS	2007	30,700	1.11	34,077	Ton	\$3,600.00	\$122,677,000	
	2006	28,600	0.93	26,598	Ton	4,200.00	111,712,000	
ALMONDS - HULLS	2007	-----	-----	42,600	Ton	90.00	3,834,000	
	2006	-----	-----	33,250	Ton	70.00	2,328,000	
PRUNES	2007	1,310	0.80	1,048	Ton	1,420.00	1,488,000	
	2006	1,650	1.90	3,135	Ton	1,300.00	4,076,000	
WALNUTS - ENGLISH	2007	4,760	1.60	7,616	Ton	2,100.00	15,994,000	
	2006	4,720	1.85	8,732	Ton	1,450.00	12,661,000	
MISCELLANEOUS <sup>1</sup>	2007	3,365	-----	-----	-----	-----	13,028,000	
	2006	3,180	-----	-----	-----	-----	11,852,000	
TOTAL	2007	40,135					\$157,021,000	
	2006	38,150					142,629,000	

<sup>1</sup> Includes organic almonds, apples, apricots, asian pears, black walnuts, wine grapes, olives, nectarines, peaches, pecans, persimmons, pistachios and pomegranates.



## FIELD CROPS

### ACREAGE, PRODUCTION AND VALUE 2007 - 2006

	YEAR	ACREAGE		PRODUCTION		VALUE	
		HARVESTED	PER ACRE	TOTAL	UNIT	PER UNIT	TOTAL
BARLEY	2007	620	1.50	930	Ton	\$160.00	\$149,000
	2006	0	0.00	0	Ton	0.00	0
BEANS - DRY	2007	6,100	1.10	6,710	Ton	820.00	5,502,000
	2006	6,400	0.90	5,760	Ton	760.00	4,378,000
CORN - GRAIN	2007	6,420	6.00	38,520	Ton	160.00	6,163,000
	2006	410	4.20	1,722	Ton	100.00	172,000
COTTON - LINT	2007	930	2.40	2,232	500#	370.00	826,000
	2006	2,720	2.60	7,072	500#	350.00	2,475,000
COTTON - SEED	2007	-----	-----	950	Ton	210.00	200,000
	2006	-----	-----	3,005	Ton	180.00	541,000
HAY - ALFALFA	2007	9,200	7.50	69,000	Ton	140.00	9,660,000
	2006	7,050	6.50	45,825	Ton	110.00	5,041,000
HAY - ALFALFA CUBE	2007	850	7.70	6,545	Ton	165.00	1,080,000
	2006	950	6.60	6,270	Ton	130.00	815,000
HAY - GRAIN <sup>1</sup>	2007	3,800	1.60	6,080	Ton	100.00	608,000
	2006	3,100	1.90	5,890	Ton	75.00	442,000
PASTURE - IRRIGATED	2007	950	-----	-----	Acre	150.00	142,500
	2006	825	-----	-----	Acre	150.00	123,750
PASTURE - DRYLAND	2007	190,000	-----	-----	Acre	10.00	1,900,000
	2006	190,000	-----	-----	Acre	10.00	1,900,000
PASTURE - STUBBLE <sup>2</sup>	2007	-----	-----	-----	---	-----	165,000
	2006	-----	-----	-----	---	-----	130,000
RICE <sup>3</sup>	2007	148,550	4.15	616,483	Ton	305.00	188,027,000
	2006	142,600	4.05	577,530	Ton	285.00	164,596,000
SAFFLOWER	2007	7,650	1.10	8,415	Ton	360.00	3,029,000
	2006	3,840	1.00	3,840	Ton	265.00	1,018,000
WHEAT	2007	22,900	2.40	54,960	Ton	180.00	9,893,000
	2006	14,700	1.50	22,050	Ton	110.00	2,426,000
MISCELLANEOUS <sup>4</sup>	2007	-----	-----	-----	---	-----	3,382,000
	2006	-----	-----	-----	---	-----	2,774,000
TOTAL	2007	397,970					\$230,726,500
	2006	372,595					186,831,750

<sup>1</sup> Includes wheat, barley, oat, sudangrass and volunteer grain hay.

<sup>2</sup> Includes alfalfa, wheat and barley stubble.

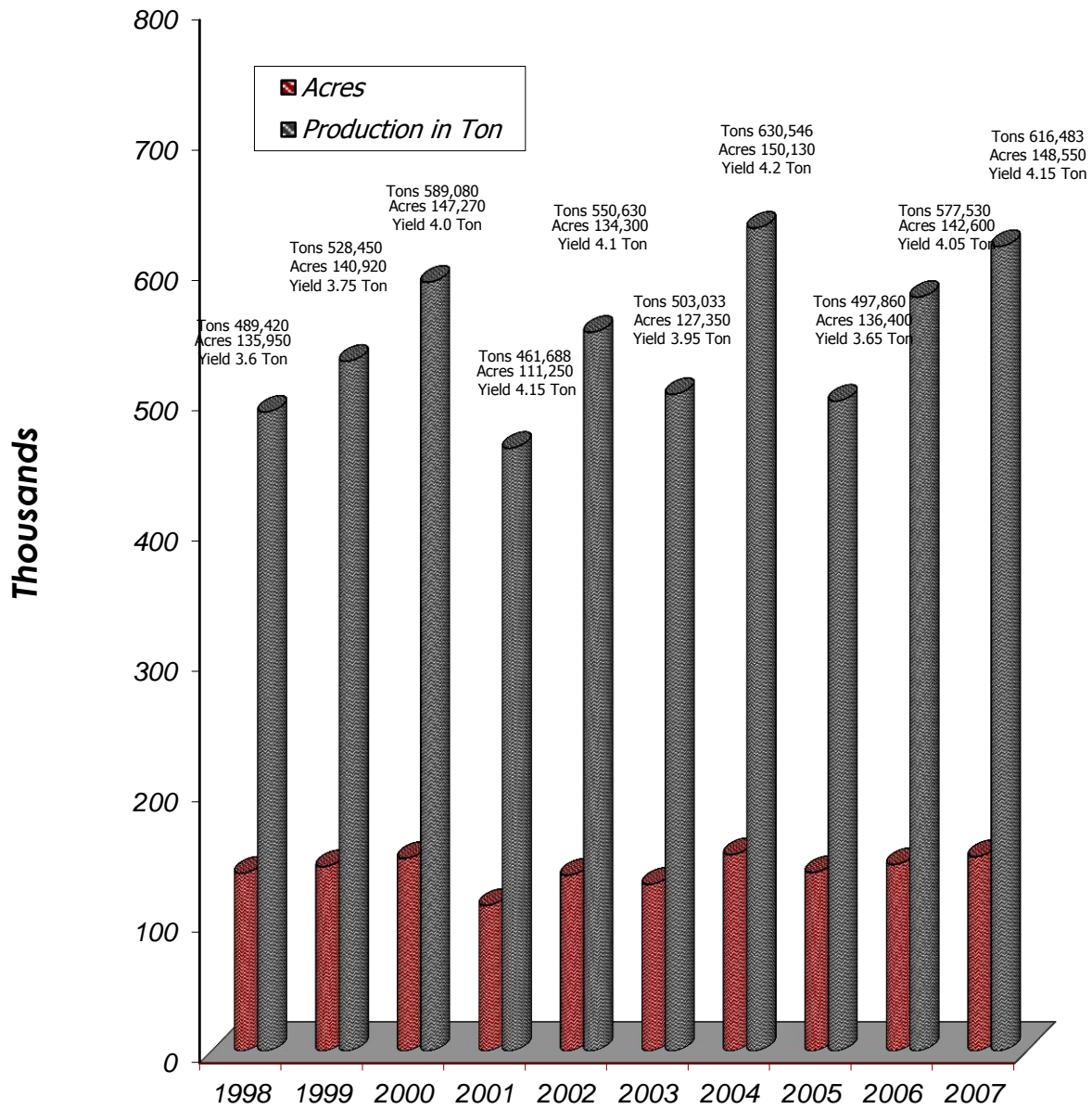
<sup>3</sup> Includes all Farm Service Agency payments to growers.

<sup>4</sup> Includes beans, rice, wheat straw, organic rice and sorghum grain.



# RICE 1998-2007

## Total Acres/Total Production







## SEED CROPS

### ACREAGE, PRODUCTION AND VALUE 2007 - 2006



CROP	YEAR	ACREAGE		PRODUCTION		VALUE	
		HARVESTED	PER ACRE	TOTAL	UNIT	PER UNIT	TOTAL
BEANS	2007	190	1,980	376,200	Lb.	\$0.48	\$181,000
	2006	330	1,780	587,400	Lb.	0.44	258,000
RICE <sup>1</sup>	2007	8,350	8,200	68,470,000	Lb.	0.18	12,325,000
	2006	6,550	7,900	51,745,000	Lb.	0.16	8,279,000
SUNFLOWERS	2007	1,790	1,610	2,881,900	Lb.	0.95	2,738,000
	2006	2,180	1,000	2,180,000	Lb.	0.80	1,744,000
WHEAT	2007	670	4,000	2,680,000	Lb.	0.10	268,000
	2006	120	3,000	360,000	Lb.	0.07	25,000
MISCELLANEOUS	2007 <sup>2</sup>	490	-----	-----	-----	-----	181,000
	2006 <sup>3</sup>	570	-----	-----	-----	-----	159,000
TOTAL	2007	11,490					\$15,693,000
	2006	9,750					10,465,000

## NON-CERTIFIED SEED CROPS

CROP	YEAR	ACREAGE		PRODUCTION		VALUE	
		HARVESTED	PER ACRE	TOTAL	UNIT	PER UNIT	TOTAL
CUCUMBERS	2007	1,550	195	302,250	Lb.	\$8.25	\$2,494,000
	2006	2,040	260	530,400	Lb.	7.15	3,792,000
MELONS	2007	240	480	115,200	Lb.	2.15	248,000
	2006	505	440	222,200	Lb.	2.95	655,000
ONIONS	2007	890	305	271,450	Lb.	20.50	5,565,000
	2006	1,140	475	541,500	Lb.	17.75	9,612,000
CARROTS	2007	280	190	53,200	Lb.	16.50	878,000
	2006	300	225	67,500	Lb.	12.50	844,000
PUMPKINS	2007	90	350	31,500	Lb.	6.70	211,000
	2006	102	275	28,050	Lb.	7.10	199,000
SQUASH	2007	650	340	221,000	Lb.	6.80	1,503,000
	2006	975	320	312,000	Lb.	5.90	1,841,000
WATERMELONS	2007	1,550	325	503,750	Lb.	3.75	1,889,000
	2006	2,965	286	847,990	Lb.	3.25	2,756,000
MISCELLANEOUS	2007 <sup>4</sup>	2,320	-----	-----	-----	-----	2,302,000
	2006 <sup>5</sup>	1,810	-----	-----	-----	-----	1,794,000
TOTAL	2007	7,570					\$15,090,000
	2006	9,837					21,493,000



<sup>1</sup> Includes all Farm Service Agency payments to growers.

<sup>2</sup> Asparagus, cotton, safflower, watermelon.

<sup>3</sup> Asparagus, cotton, safflower, sudangrass.

<sup>4</sup> Beets, broccoli, brussel sprouts, burdock, cabbage, canola, cauliflower, chard, collards, gourds, herbs, kale, leeks, mustard, oats, organic carrots, herbs, flowers and spices, parsley, peas, sorghum, sudangrass, sunflowers, tomato, turnips, zinnia.

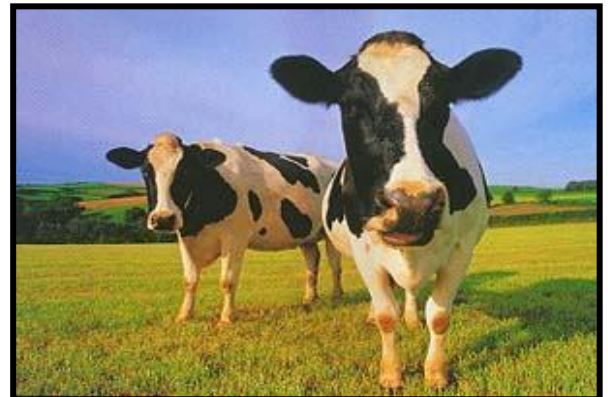
<sup>5</sup> Includes beets, broccoli, brussel sprouts, burdock, cabbage, chard, collards, herbs, kale, mustard, parsley, peas, sudangrass, sunflowers, turnips, organic carrots, herbs, flowers and spices.

## LIVESTOCK

ITEMS	YEAR	NUMBER OF HEAD	LIVE WEIGHT	UNIT	VALUE	
					PER UNIT	TOTAL
CATTLE AND CALVES	2007	21,440	96,500	Cwt.	\$93.70	\$9,042,000
	2006	24,800	136,400	Cwt.	89.30	12,181,000
SHEEP AND LAMBS	2007	2,400	2,640	Cwt.	90.50	239,000
	2006	2,600	2,860	Cwt.	85.00	243,000
MISCELLANEOUS	2007 <sup>1</sup>	-----	-----	----	-----	962,000
	2006 <sup>2</sup>	-----	-----	----	-----	695,000
TOTAL	2007					\$10,243,000
	2006					13,119,000

<sup>1</sup> Includes chickens, chukars, goats, hogs, pheasants and quail.

<sup>2</sup> Includes chickens, goats, hogs and quail.



## LIVESTOCK PRODUCTS 2007 - 2006

ITEMS	YEAR	PRODUCTION	UNIT	VALUE	
				PER UNIT	TOTAL
MISCELLANEOUS <sup>1</sup>	2007	-----	-----	-----	\$24,500
	2006	-----	-----	-----	27,500
TOTAL	2007				\$24,500
	2006				27,500



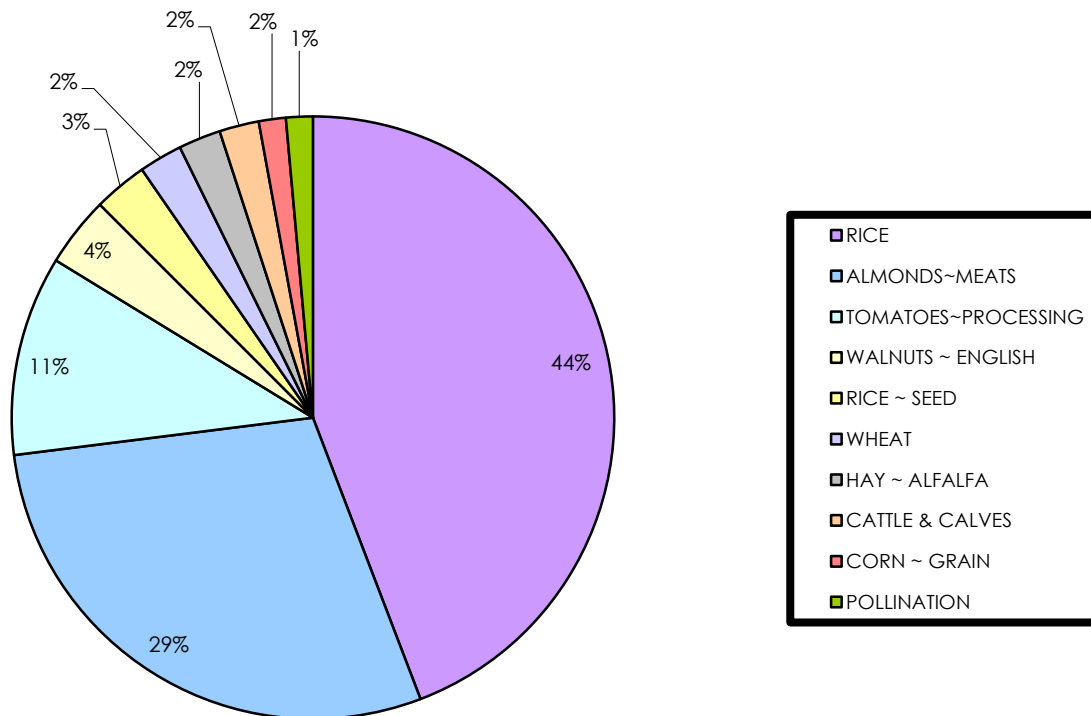
<sup>1</sup> Includes wool.





## TEN LEADING FARM COMMODITIES 2007 - 2006

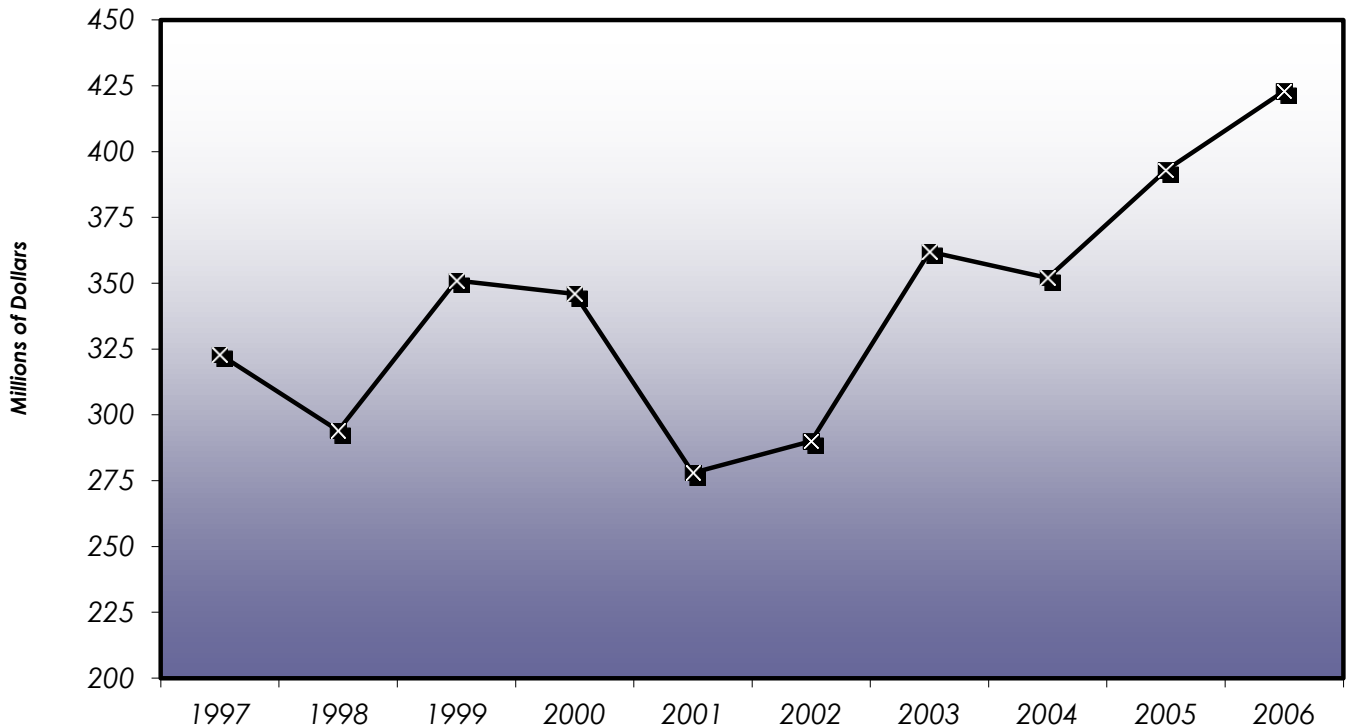
<u>CROP</u>	<u>AMOUNT</u>	<u>2007</u>	<u>2006</u>
RICE	\$188,027,000	1	1
ALMONDS ~ MEATS	122,677,000	2	2
TOMATOES ~ PROCESSING	45,634,000	3	3
WALNUTS ~ ENGLISH	15,994,000	4	4
RICE ~ SEED	12,325,000	5	7
WHEAT	9,893,000	6	15
HAY ~ ALFALFA	9,660,000	7	9
CATTLE & CALVES	9,042,000	8	5
CORN ~ GRAIN	6,163,000	9	23
POLLINATION	6,107,000	10	8



## TEN YEAR COMPARISON 2007 - 1998

2007	GRAND TOTAL	484,525,000
2006	GRAND TOTAL	422,729,000
2005	GRAND TOTAL	392,677,000
2004	GRAND TOTAL	351,604,000
2003	GRAND TOTAL	361,573,000
2002	GRAND TOTAL	290,264,000
2001	GRAND TOTAL	277,826,000
2000	GRAND TOTAL	345,906,000
1999	GRAND TOTAL	351,278,000
1998	GRAND TOTAL	293,633,000

### TEN YEAR COMPARISON





## Colusa County Commodities and Their Destinations

Colusa County exports these vegetable and flower seeds overseas:

Asparagus  
Basil  
Bean  
Broccoli  
Cabbage  
Calendula  
Cantaloupe  
Carrot  
Cauliflower  
Chicory

Coriander  
Corn  
Cucumber  
Dill  
Gourd  
Kale  
Lettuce  
Melon  
Mustard  
Onion

Parsley  
Peas  
Pepper  
Pumpkin  
Radish  
Squash  
Sunflower  
Tomato  
Turnip  
Watermelon

Food crops that are exported overseas include:



Almonds  
Plums  
Rice  
Beans  
Prunes  
Wild Rice



Importing countries that purchase commodities produced in Colusa County:

Argentina  
Australia  
Austria  
Bahrain  
Belgium  
Belize  
Brazil  
Canada  
Canary Islands  
Chile  
China  
Colombia  
Cyprus  
Denmark  
Dominican Republic  
Ecuador  
El Salvador  
Egypt  
Finland  
France  
Germany  
Ghana  
Greece  
Guam

Guatemala  
Hong Kong  
Iceland  
India  
Indonesia  
Israel  
Italy  
Jamaica  
Japan  
Jordan  
Kenya  
Kuwait  
Lebanon  
Lithuania  
Malaysia  
Martinique  
Mexico  
Micronesia  
Netherlands  
New Caledonia  
New Zealand  
Nicaragua  
Norway  
Pakistan

Panama  
Papua New Guinea  
People's Republic of China  
Peru  
Philippines  
Poland  
Portugal  
Republic of Korea  
Russian Federation  
Saipan  
Saudi Arabia  
Singapore  
South Africa  
Spain  
Sweden  
Switzerland  
Taiwan  
Tahiti  
Thailand  
Trinidad & Tobago  
Turkey  
United Arab Emirates  
United Kingdom  
Venezuela

