

TUOLUMNE COUNTY CROP and LIVESTOCK REPORT



2012



County of Tuolumne

Vicki Helmar

**Agricultural Commissioner • Weights & Measures
Animal Control • Air Pollution Control
2 South Green Street, Sonoma, CA 95370
Phone: 209-533-5691 Fax: 209-533-5520**

*Agricultural Commissioner
Director of Weights & Measures
Director of Animal Control
Air Pollution Control Officer*

To: Karen Ross, Secretary
California Department of Food and Agriculture

The Honorable Board of Supervisors, County of Tuolumne

Randy Hanvelt, Chairperson, Second District
Sherri Brennan, First District
Evan Royce, Third District
John L. Gray, Fourth District
Karl Rodefer, Fifth District

Craig L. Pedro, County Administrative Officer

I am pleased to submit, in accordance with Section 2279 of the California Food and Agriculture Code, Tuolumne County's Annual Crop and Livestock Report for 2012. This report provides a statistical description of Tuolumne County's agricultural production. The figures contained in this report represent gross values of agricultural commodities and do not reflect production costs or net returns to growers.

The value of agricultural commodities produced in Tuolumne County in 2012 is estimated at \$29,968,000. This represents a 2.5% increase from last year's production value of \$29,238,000. The 2012 crop year saw mixed results for Tuolumne County's agriculture with half the categories experiencing increases in production values and the other half experiencing decreases in production values. Highlights of the 2012 crop year include:

- Favorable weather conditions during the growing season resulted in the highest production year on record for fruit and vegetables. The category total of \$671,000 is a 67.7% jump from the 2011 production values.
- After rebounding in 2011, timber production slipped in 2012. Although prices improved, the number of board feet harvested dropped almost 20% to 35,359,000.
- 2012 was another strong year for livestock and poultry production. Cattle and calves, turkeys, and goats all rose in value due to higher prices and/or production. However, sheep and lamb values were victims of volatile market conditions causing a decline in prices.
- The drought conditions of early 2012 impacted rangeland forage production with values dropping more than 15%.

I wish to express my appreciation to the agricultural producers, organizations, and public agencies that have cooperated in providing data for this report. I would also like to express sincere thanks to my staff, especially Drew Raymond who compiled the report.

Respectfully submitted,

Vicki Helmar

Vicki Helmar

Agricultural Commissioner

TUOLUMNE COUNTY DEPARTMENT OF AGRICULTURE

2012 ANNUAL CROP REPORT

TUOLUMNE COUNTY BOARD OF SUPERVISORS

RANDY HANVELT; CHAIRPERSON	SECOND DISTRICT
SHERRI BRENNAN	FIRST DISTRICT
EVAN ROYCE	THIRD DISTRICT
JOHN L. GRAY	FOURTH DISTRICT
KARL RODEFER	FIFTH DISTRICT

COUNTY ADMINISTRATIVE OFFICER

CRAIG PEDRO

AGRICULTURAL STAFF

VICKI HELMAR	AGRICULTURAL COMMISSIONER
PAUL V. RAINEY	SENIOR AGRICULTURAL BIOLOGIST
DREW RAYMOND	AGRICULTURAL BIOLOGIST I I
ROBERTA SHIELDS	DEPARTMENT SUPPORT TECHNICIAN
RON ANDERSON	USDA WILDLIFE SERVICES SPECIALIST

FRUIT AND VEGETABLES

	YEAR	ACRES	TOTAL
TREE AND VINE CROPS	2012	245	\$478,000
	2011	253	\$269,000
VEGETABLE CROPS	2012	15	\$193,000
	2011	14	\$131,000
TOTAL	2012	260	\$671,000
	2011	267	\$400,000



FIELD CROPS

CROP	YEAR	ACREAGE	PER ACRE	TOTAL	UNIT	\$/UNIT	TOTAL
HAY ¹	2012	300	2.3	690	TON	\$200.00	\$138,000
	2011	300	2.3	690	TON	\$130.00	\$ 90,000
IRRIGATED PASTURE	2012	1,420			ACRE	\$130.00	\$185,000
	2011	1,420			ACRE	\$130.00	\$185,000
RANGELAND	2012	200,000			ACRE	\$ 16.63	\$3,326,000
	2011	200,000			ACRE	\$ 19.65	\$3,930,000
TOTAL	2012						\$3,649,000
	2011						\$4,204,000

¹Most of the hay is used on the farms where it is produced.
Numbers May Not Compute Exactly Due To Rounding.

APIARY AND NURSERY



ITEM	YEAR		TOTAL
APIARY PRODUCTS	2012	Includes honey, pollen, bees wax, and pollination fees	\$80,000
	2011		\$75,000
NURSERY PRODUCTS	2012	Includes Christmas trees	\$225,000
	2011		\$244,000
TOTAL APIARY AND NURSERY PRODUCTS	2012		\$305,000
	2011		\$319,000



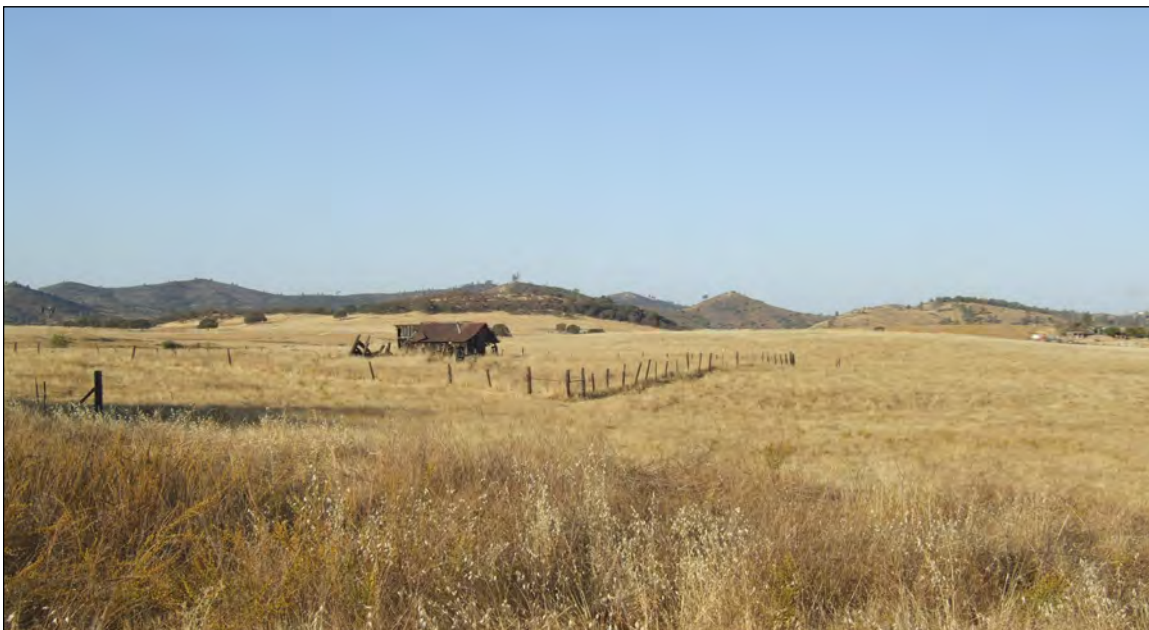
LIVESTOCK AND POULTRY PRODUCTS

ITEM	YEAR	TOTAL
MISCELLANEOUS PRODUCTS ²	2012	\$102,000
	2011	\$ 94,000

²wool, eggs, hides, manure
Numbers May Not Compute Exactly Due To Rounding.

LIVESTOCK

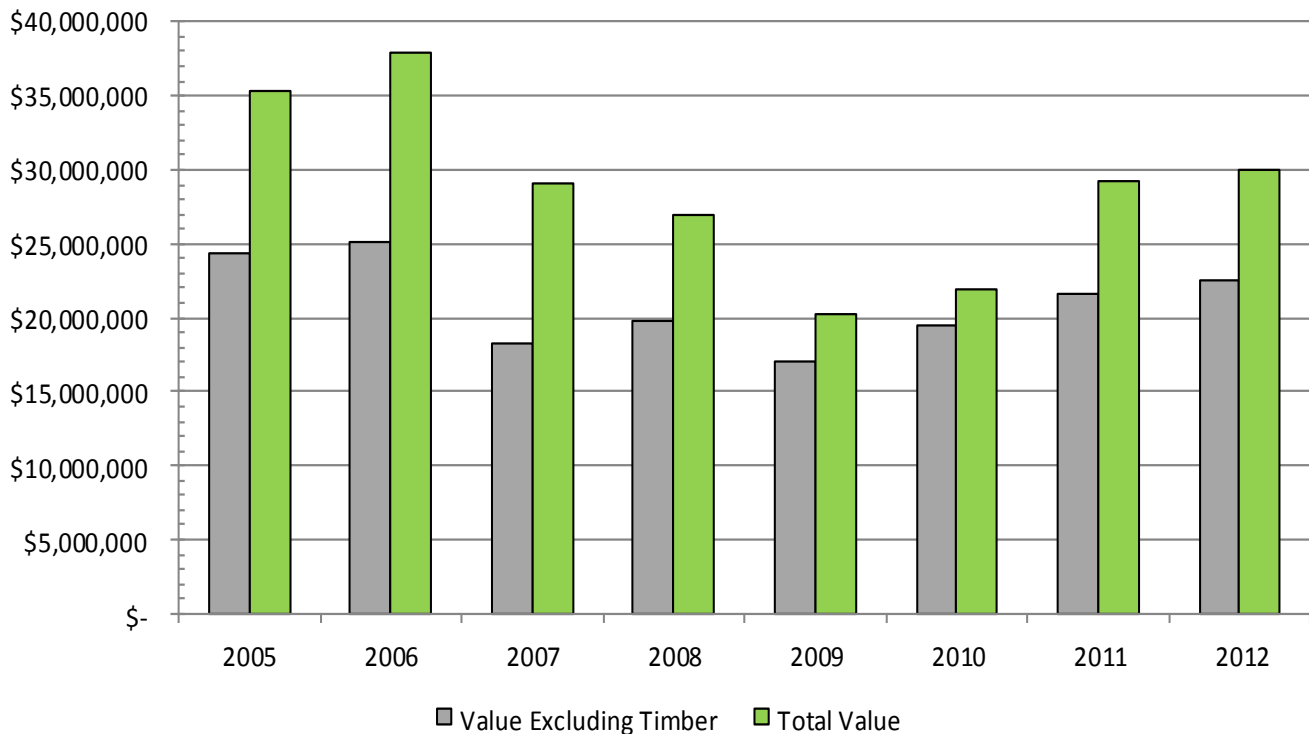
ITEM		NUMBER OF HEAD	TOTAL WEIGHT	UNIT	\$/UNIT	TOTAL
CATTLE AND CALVES						
CALVES	2012	7,650	54,239	CWT	\$132.00	\$ 7,160,000
	2011	7,750	57,350	CWT	\$117.00	\$ 6,710,000
SLAUGHTER CATTLE	2012	375	4,864	CWT	\$ 76.50	\$ 372,000
	2011	396	5,215	CWT	\$ 75.00	\$ 391,000
TOTAL CATTLE	2012					\$ 7,532,000
	2011					\$ 7,101,000
SHEEP AND LAMBS	2012	1,200	1,308	CWT	\$ 144.00	\$ 188,000
	2011	1,220	1,366	CWT	\$ 160.00	\$ 219,000
OTHER LIVESTOCK AND POULTRY	2012					\$10,098,000
	2011					\$ 9,243,000
TOTAL	2012					\$17,818,000
	2011					\$16,563,000



TIMBER

	YEAR	BOARD FEET	UNIT ³	\$/UNIT	TOTAL
PUBLIC AND PRIVATE	2012	35,359	KBF	\$171.78	\$ 6,074,000
FOREST ⁴	2011	44,164	KBF	\$147.59	\$ 6,518,000
FUEL WOOD ⁵	2012				\$ 1,350,000
	2011				\$ 1,140,000
TOTAL	2012				\$ 7,424,000
	2011				\$ 7,658,000

COMPARISON OF AGRICULTURAL VALUES



³KBF=Thousand Board Feet

⁴preliminary—as reported by the state Board of Equalization

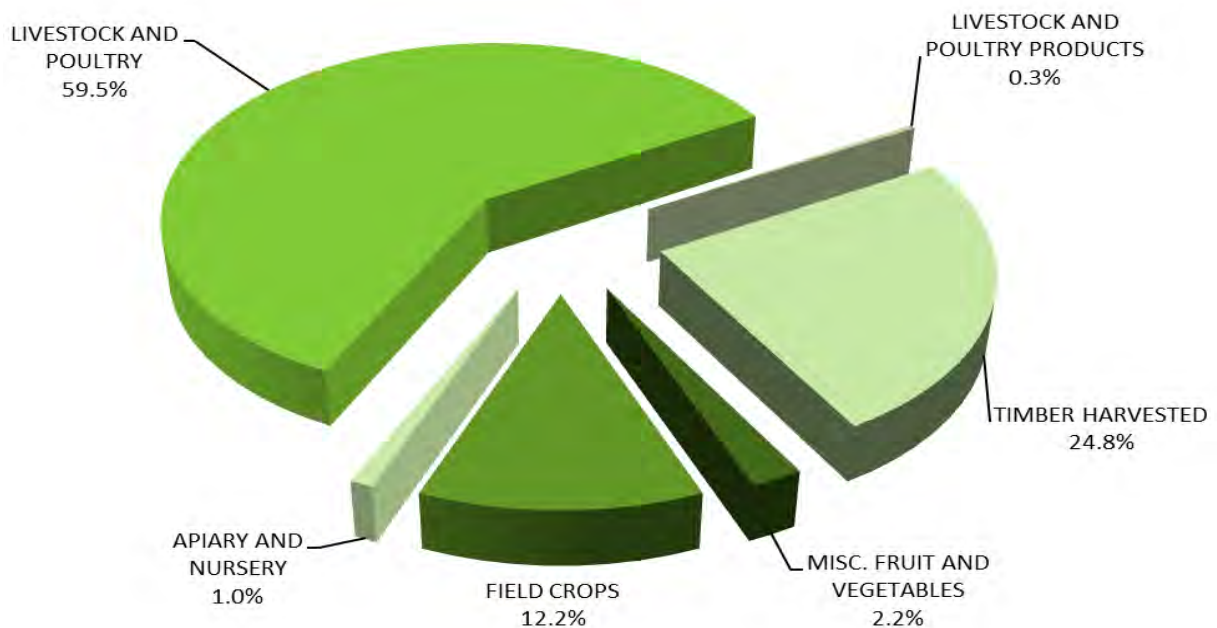
⁵market value

Numbers May Not Compute Exactly Due To Rounding.

SUMMARY

	2012	2011
MISCELLANEOUS FRUIT AND VEGETABLES	\$ 671,000	\$ 400,000
FIELD CROPS	\$ 3,649,000	\$ 4,204,000
APIARY AND NURSERY PRODUCTS	\$ 305,000	\$ 319,000
LIVESTOCK AND POULTRY	\$ 17,818,000	\$ 16,563,000
LIVESTOCK AND POULTRY PRODUCTS	\$ 102,000	\$ 94,000
SUBTOTAL	\$ 22,544,000	\$ 21,580,000
TIMBER HARVESTED	\$ 7,424,000	\$ 7,658,000
TOTAL	\$ 29,968,000	\$ 29,238,000

PERCENTAGE OF TOTAL AGRICULTURAL PRODUCTION



Numbers May Not Compute Exactly Due To Rounding.

ANNUAL SUSTAINABLE AGRICULTURE REPORT

PEST EXCLUSION

<u>PEST</u>	<u>PATHWAY</u>	<u>SHIPMENTS</u>	
		<u>INSPECTED</u>	<u>REJECTED</u>
Exotic Pests*	Incoming Plant Material, Household Goods via Truck	26	0
Glassy-Winged Sharpshooter	Incoming Plant Material via Truck	155	0

*Includes GypsyMoth, Sudden Oak Death, European Pine Shoot Moth, and Western Cherry Fruit Fly

PEST DETECTION: Tuolumne County maintains the following Pest Detection Traps

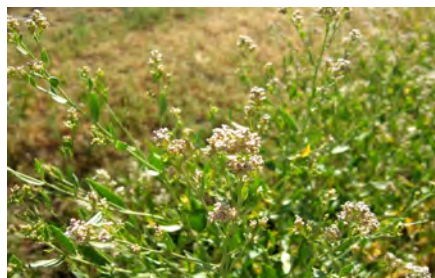
Glassy Winged Sharpshooter	107	Japanese Beetle	19
Gypsy Moth	195	Light Brown Apple Moth	99
Mediterranean Fruit Fly (Champ Traps)	10	European Grapevine Moth	2
Light Brown Apple Moth Delimitation Traps (Deployed after 1 confirmed male found)			108

PEST ERADICATION

<u>PEST</u>	<u>MECHANISM</u>	<u>SCOPE OF PROGRAM</u>
Spotted Knapweed	Chemical and Mechanical control	4 sites
Diffuse Knapweed	Mechanical control	1 site
Oblong Spurge	Chemical control	8 sites
Dyer's Woad	Mechanical control	1 site
Skeletonweed	Chemical control	4 sites
Canada Thistle	Chemical control	2 sites
Smooth Distaff Thistle	Chemical control	20 sites
White Horsenettle	Chemical control	1 site
Perennial Pepperweed	Chemical control	4 sites
Iberian Starthistle	Chemical control	2 sites



Dyer's Woad



Perennial Pepperweed

BIOLOGICAL CONTROL PROGRAMS

<u>PEST</u>	<u>AGENT</u>	<u>SCOPE OF PROGRAM</u>
Yellow Starthistle	Seed Head Weevil, <i>Bangasternus orientalis</i>	countywide
	Seed Head Gall Fly, <i>Urophora sirunasev</i>	countywide
	Hairy Weevil, <i>Eustenopus villosus</i>	countywide
	Peacock Fly, <i>Chaetorellia australis</i>	countywide
Grapeleaf Skeletonizer	Parasitic Wasp, <i>Apanteles harrisinae</i>	Tuolumne City
	Parasitic Wasp, <i>Ametadoria missella</i>	Tuolumne City
Klamath Weed	Klamath Weed Beetle, <i>Chrysolina gemellata</i>	countywide
Italian Thistle	Seed Head Weevil, <i>Rhinocyllus conicus</i>	countywide
Ash Whitefly	Parasitic Wasp, <i>Encarsia partenopea</i>	countywide
Puncture Vine	Stem Weevil, <i>Microlainus lypriformis</i>	countywide
	Seed Head Weevil, <i>Microlainus larenyii</i>	countywide
Red Gum Lerp Psyllid	Parasitic Wasp, <i>Psyllaephagus bliteus</i>	Don Pedro

CERTIFIED FARMERS' MARKETS

SONORA'S CERTIFIED FARMERS' MARKET:

Saturday, 7:30am-11:30am,
Theall and Stewat Streets, Sonora

TUOLUMNE VILLAGE MARKET:

Wednesday, 4:00pm-8:00pm,
Tuolumne Veterans Memorial Park, Tuolumne

TWAIN HARTE CERTIFIED FARMERS' MARKET:

Fridays, 4:00pm-7:00pm
23074 Fuller Rd, Twain Harte



NUMBER OF CERTIFIED PRODUCERS 19

ORGANIC PROGRAM

REGISTERED ORGANIC PRODUCERS* 5 TOTAL ACREAGE 125

*Includes turkeys, apples, eggs, mixed vegetables, and nursery products

TUOLUMNE COUNTY GENERAL INFORMATION

COUNTY SEAT SONORA

POPULATION (2010 U.S. Census) 55,365

LAND AREA (ACRES) 1,415,781

Federally owned U.S. Forest Service 605,803

Yosemite National Park 435,847

Bureau of Land Management 47,352

New Melones Reservoir 9,906

Total 1,098,908

State and Local Government 2,866

Other Government (Water Use) 12,511

Restricted use private lands

Timber Preserve Zone 83,978

Land Conservation Agreement (Williamson Act) 110,857

Total 194,835

Private land subject to development 106,661

RAILROADS SIERRA RAILROAD

MAJOR ROADS STATE HIGHWAY 49, STATE HIGHWAY 108, STATE HIGHWAY 120

MAJOR PASSES SONORA PASS (9,628 FEET), TIOGA PASS (9,941 FEET)

HIGHEST POINT MOUNT LYELL (13,114 FEET)

MAJOR RIVERS TUOLUMNE RIVER, STANISLAUS RIVER