

---

# Yolo County 2012 Agricultural Crop Report

---





# Yolo County

## Department of Agriculture and Weights & Measures

“We exist to satisfy the needs of our clients not just to produce an output.” (Unknown Author)

### Yolo County Strategic Goals

- Advance innovation
- Champion job creation and economic opportunities
- Collaborate to maximize success
- Enhance and sustain the safety net
- Preserve and ensure safe and crime free communities
- Preserve and support agriculture
- Protect open space and the environment
- Provide fiscally sound, dynamic and responsive services

### Department Vision, Mission and Values

#### Vision

Our vision is to serve agriculture, the business community and the residents of Yolo County, through collaboration and partnership using the most efficient, effective and progressive means available, doing our part to ensure Yolo County has preserved agriculture and is a safe, healthy, and enjoyable environment in which to work, play and live.

#### Mission

Our mission is to promote and protect Yolo County agriculture and the environment, ensure the health and safety of our residents, and foster confidence and equity in the marketplace through the fair and equitable enforcement of the laws, regulations, and ordinances enacted by the people of the State of California and the County of Yolo.

#### Values

Employees of the Department of Agriculture and Weights & Measures, in an effort to accomplish the Department's Vision and Mission, share these values in the course of our work and our employment with Yolo County:

- Honesty
- Integrity
- Trust
- Enthusiasm
- Courtesy
- Customer Service
- Initiative
- Good Stewardship of Scarce Public Resources
- Continuous Improvement
- Personal and Professional Growth
- Respect and Tolerance of the Rights and Beliefs of Others



# County of Yolo

70 Cottonwood Street

Woodland, California 95695-2557

(530) 666-8140

FAX (530) 662-6094

**John Young**  
AGRICULTURAL COMMISSIONER  
SEALER OF WEIGHTS AND MEASURES

---

August, 2013

Karen Ross, Secretary, California Department of Food and Agriculture and Honorable Board of Supervisors, County of Yolo

Pursuant to the provisions of Sections 2279 and 2272 of the California Food and Agriculture Code, I am pleased to present the Yolo County Crop Report for 2012. This annual publication summarizes the acreage, production and valuation of Yolo County's agricultural commodities. These figures denote gross value of production and do not attempt to reflect net farm income.

The gross value of Yolo County's agricultural production for 2012 was \$645,766,504; an all-time high and an increase of 17.5% from 2011. This increase reflects overall higher price per unit for commodities and increases in acreage. Nut crops (walnuts and almonds) exhibited marked increases in price per unit from 2011 with farm gate values roughly 50% higher for the 2012 cropping season.

Processing tomatoes remain Yolo County's leading commodity with a gross value of \$111,566,739, up from \$106,792,881 in 2011. Although harvested acres were fewer than in 2011, the commodity increased in value due to a slightly increased price for the 2012 cropping season.

Wine grapes, rice, alfalfa hay and walnuts remain in the top five commodities according to gross value, with wine grapes moving to the number two position ahead of rice. Almonds edged into sixth position in gross value ahead of organic production. Nevertheless, the gross value of organic production increased by nearly 33% to just over \$40,000,000 for 2012. Field corn, sunflower seed and wheat round out the top ten commodities for 2012.

I would like to express my appreciation to all the farmers, ranchers and agencies who contributed data making this report possible. Special recognition for the compilation of this report goes to Jenni King, Leslie Churchill, Beth Gabor, Dennis Chambers and all the staff that assisted in gathering the information.

To see this or any previous crop reports online, or to learn about the programs and services provided by the Yolo County Department of Agriculture, visit: [www.yolocounty.org/Index.aspx?page=486](http://www.yolocounty.org/Index.aspx?page=486).

Respectfully submitted,

John Young  
Agricultural Commissioner

# Table of Contents .....Page

<b>Top 20 Commodities .....</b>	<b>4</b>
<b>Vegetable Crops .....</b>	<b>5</b>
<b>Organic Production.....</b>	<b>5</b>
<b>Nursery Products .....</b>	<b>5</b>
<b>Wine Grapes .....</b>	<b>6</b>
<b>Field Crops .....</b>	<b>7</b>
<b>Seed Crops &amp; Export Partners .....</b>	<b>8</b>
<b>Fruit &amp; Nut Crops .....</b>	<b>9</b>
<b>Livestock &amp; Poultry .....</b>	<b>10</b>
<b>Apiary, Livestock &amp; Poultry Products.....</b>	<b>10</b>
<b>Commodity Summary .....</b>	<b>11</b>
<b>Sustainable Agriculture Report 2012.....</b>	<b>12</b>
<b>2013 National Ag Week Art Contest Winners.....</b>	<b>starting on 5</b>
<b>Yolo County Wine Tasting Rooms.....</b>	<b>starting on 9</b>
<b>Yolo County Community Supported Agriculture .....</b>	<b>starting on 11</b>
<b>Yolo County Certified Farmers Markets .....</b>	<b>13</b>
<b>Farm to School Yolo .....</b>	<b>14</b>
<b>Al Barth .....</b>	<b>15</b>
<b>Acknowledgements .....</b>	<b>16</b>



**Congratulations to the  
Yolo County  
2013 National Ag Week  
Art Contest Winners!**

See artwork and  
winning artists  
on the pages  
to follow

## Top 20 Commodities

Commodity	2012	2011	2010
1. Tomatoes, Processing	\$111,566,739	\$106,792,881	\$87,920,291
2. Grapes, Wine (All)	66,293,028	48,757,213	45,649,602
3. Rice	60,012,106	58,158,982	56,306,081
4. Hay, Alfalfa	51,446,496	45,935,401	27,878,499
5. Walnuts	49,284,358	33,506,903	24,365,054
6. Almonds	41,412,384	26,479,988	16,800,842
7. Organic Production	40,162,333	30,230,248	26,243,200
8. Corn, Field	29,796,166	24,625,305	16,737,304
9. Sunflower Seed	29,767,207	19,655,460	11,087,895
10. Wheat	20,435,199	20,674,595	15,317,308
11. Cattle & Calves	17,289,098	13,850,250	14,229,600
12. Nursery Stock, All	12,793,070	13,975,185	9,432,534
13. Prunes, Dried	6,076,800	6,673,001	7,103,880
14. Apiary Products	5,548,616	5,441,779	5,946,910
15. Safflower	5,237,866	4,432,303	3,151,223
16. Hay, Grain	4,847,176	4,013,193	3,047,797
17. Pasture and Grass Seed	4,357,060	4,306,875	4,063,053
18. Vine Seed	4,047,853	7,083,628	3,332,730
19. Sheep & Lambs	2,147,740	2,441,600	1,748,642
20. Olives (oil)	2,131,035		

## Vegetable Crops

	Year	Production			Value	
		Harvested Acreage	Per Acre	Total Tons	Per Ton	Total
Tomatoes,	2012	36,843	43.34	1,596,776	\$69.87	\$111,566,739
Processing	2011	40,103	38.41	1,540,356	69.33	106,792,881
Miscellaneous <sup>1</sup>	2012	5,153				14,886,513
	2011	5,422				21,527,965
<b>Total</b>	<b>2012</b>	<b>41,996</b>				<b>\$126,453,252</b>
	<b>2011</b>	<b>45,525</b>				<b>\$128,320,846</b>

## Organic Production

	Year	Harvested Acreage	Total
Production,	2012	34,966	* \$28,299,258
Organic	2011	21,387	* 18,706,971
Fresh Market,	2012	1,041	11,863,075
Organic	2011	1,188	11,523,277
<b>Total</b>	<b>2012</b>	<b>36,007</b>	<b>\$40,162,333</b>
	<b>2011</b>	<b>22,575</b>	<b>\$30,230,248</b>

## Nursery Products

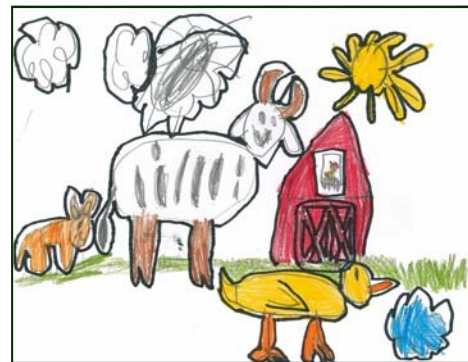
	Year	Harvested Acreage	Total
Propagative	2012	262	\$4,181,885
Stock <sup>2</sup>	2011	260	5,970,000
Nursery	2012	41	8,611,185
Stock <sup>3</sup>	2011	41	8,005,185
<b>Total</b>	<b>2012</b>	<b>303</b>	<b>\$12,793,070</b>
	<b>2011</b>	<b>301</b>	<b>\$13,975,185</b>

<sup>1</sup> Miscellaneous - Asparagus, beet, broccoli, carrot, collard, cucumber, kale, leek, lettuce, melon (including honeydew), mustard, okra, peppers, pumpkin, squash, sweet corn, tomato (fresh), watermelon, and other truck crops.

<sup>2</sup> Includes bareroot, benchgraft, budwood and cuttings.

<sup>3</sup> Includes trees, container stock, organic transplants, and transplants.

\* Includes organic range land.



**Kindergarten 1<sup>st</sup> Place Winner 2013**  
Max Bloom, Birch Lane Elementary

**Kindergarten 2<sup>nd</sup> Place Winner 2013**  
Kilee Carey, Westmore Oaks Elementary

**Kindergarten 3<sup>rd</sup> Place Winner 2013**  
Margaret Tkachuk, Woodland Christian School

**Kindergarten 4<sup>th</sup> Place Winner 2013**  
Cleah Sronce, Merryhill School



**First Grade 1<sup>st</sup> Place Winner 2013**  
Connie Huang, Merryhill School

**First Grade 2<sup>nd</sup> Place Winner 2013**  
Yovani Carranza, Science & Technology

**First Grade 3<sup>rd</sup> Place Winner 2013**  
Julia Singh, Zamora Elementary

**First Grade 4<sup>th</sup> Place Winner 2013**  
Antone Marfil, Esparto Elementary



**Second Grade 1<sup>st</sup> Place Winner 2013**  
Kalyssa Grinbergs, Waggoner Elementary

**Second Grade 2<sup>nd</sup> Place Winner 2013**  
Isaias Del Toro, Esparto Elementary

**Second Grade 3<sup>rd</sup> Place Winner 2013**  
Samantha Cisneros, Esparto Elementary

**Second Grade 4<sup>th</sup> Place Winner 2013**  
Andres Barragan, Esparto Elementary



**Third Grade 1<sup>st</sup> Place Winner 2013**  
Mia Trujillo, Esparto Elementary

**Third Grade 2<sup>nd</sup> Place Winner 2013**  
Isaiah Hurtado, Esparto Elementary

**Third Grade 3<sup>rd</sup> Place Winner 2013**  
Carson Hamer, Gibson Elementary

**Third Grade 4<sup>th</sup> Place Winner 2013**  
Jackie Contreras Lopez, Gibson Elementary

# Wine Grapes

	Production			Value		
	Year	Harvested Acreage	Per Acre	Total Tons	Per Ton	Total
Wine Grapes	2012	3,309	5.80	19,192	\$898.44	\$17,242,860
(Red)	2011	3,131	5.29	16,563	762.37	12,627,134

Black Wine Grape Varieties	Bearing Acres	Non-Bearing Acres	Total Acres
Alicante Bouschet	10		10
Cabernet Sauvignon	343		343
Gamay	13		13
Grenache	17		17
Malbec	63		63
Merlot	904	17	921
Petite Sirah	529	106	635
Petit Verdot	60		60
Pinot Noir	771		771
Syrah	394		394
Tempranillo	61		61
Zinfandel	70		70
Miscellaneous <sup>1</sup>	74		74

<sup>1</sup> Includes Aglianico, Barbera, Cabernet Franc, Durif, Grenache Noir, Lagrein, Mourvedre, Primitivo, Sangiovese, Tannat, Teroldego and others.

	Production			Value		
	Year	Harvested Acreage	Per Acre	Total Tons	Per Ton	Total
Wine Grapes	2012	8,855	8.64	76,507	\$641.12	\$49,050,168
(White)	2011	8,854	7.34	64,988	555.95	36,130,079

White Wine Grape Varieties	Bearing Acres	Non-Bearing Acres	Total Acres
Burger	126		126
Chardonnay	5,296	133	5,429
Chenin Blanc	814		814
Gewurztraminer	52	76	128
Muscat Blanc	55	70	125
Pinot Gris	940	207	1,147
Riesling	49	113	162
Sauvignon Blanc	755		755
Semillon	107	47	154
Symphony	29		29
Viognier	257		257
Miscellaneous <sup>2</sup>	375		375

<sup>2</sup> Includes Airen, Albarino, Greco di Tufo, Grenache Blanc, Picpool Blanc, Roussanne, Verdelho, Vermentino, and others.



# Field Crops

	Production			Value		
	Year	Harvested Acreage	Per Acre	Total Tons	Per Ton	Total
Corn, Field <sup>1</sup>	2012	23,537	5.73	134,867	\$220.93	\$29,796,166
	2011	20,225	6.51	131,665	187.03	24,625,305
Hay, Alfalfa	2012	42,565	6.30	268,160	191.85	51,446,496
	2011	41,023	5.50	225,627	203.59	45,935,401
Hay, Grain <sup>2</sup>	2012	10,568	3.17	33,501	144.69	4,847,176
	2011	11,442	2.51	28,719	139.74	4,013,193
Pasture, Irrigated	2012	11,500			* 128.75	1,480,625
	2011	11,500			* 92.22	1,060,530
Pasture, Dry	2012	117,000			* 13.91	1,627,470
	2011	119,200			* 18.84	2,245,728
Rice <sup>3</sup>	2012	40,461	4.15	167,913	357.40	60,012,106
	2011	42,476	4.13	175,426	331.53	58,158,982
Safflower	2012	9,790	1.05	10,280	509.52	5,237,866
	2011	8,775	1.05	9,214	481.04	4,432,303
Wheat	2012	35,754	2.50	89,385	228.62	20,435,199
	2011	42,913	2.44	104,708	197.45	20,674,595
Misc <sup>4</sup>	2012	89,465				18,966,361
	2011	81,187				12,424,795
<b>Total</b>	<b>2012</b>	<b>380,640</b>				<b>\$193,849,465</b>
	<b>2011</b>	<b>378,741</b>				<b>\$173,570,832</b>

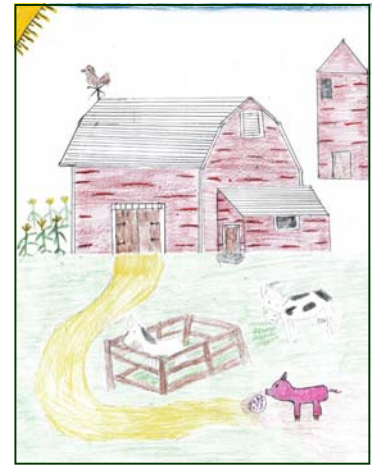
1 Includes silage.

2 Includes oat, ryegrass, sudangrass and volunteer hay.

3 Includes seed. Values include Federal Rice Payments.

4 Includes barley, canola, cotton, dry beans, earlige, grass hay, millet, milo, oats, screenings, straw, teff, timothy grass hay, triticale and wild rice. Screenings are generated by the mill, not by the grower.

\* Indicates value per acre.



**Fourth Grade 1<sup>st</sup> Place Winner 2013**  
Monzerratt Solorio, Whitehead Elementary

**Fourth Grade 2<sup>nd</sup> Place Winner 2013**  
Stephanie Forbs, Tafoya Elementary

**Fourth Grade 3<sup>rd</sup> Place Winner 2013**  
Jake Blumwald, Merryhill School

**Fourth Grade 4<sup>th</sup> Place Winner 2013**  
Chloe Henning, Our Lady of Grace School



**Fifth Grade 1<sup>st</sup> Place Winner 2013**  
Elena Olvera, Plainfield Elementary

**Fifth Grade 2<sup>nd</sup> Place Winner 2013**  
Teigen Johnson, Merryhill School

**Fifth Grade 3<sup>rd</sup> Place Winner 2013**  
Andrew Gutierrez, Gibson Elementary

**Fifth Grade 4<sup>th</sup> Place Winner 2013**  
Lily Failla, Westmore Oaks Elementary

# Seed Crops

Certified Seed	Harvested		Total
	Year	Acreage	
Small Grain	2012	2,992	\$1,748,641
	2011	2,224	2,176,097
Sunflower	2012	21,932	29,767,207
	2011	19,039	19,655,460
Miscellaneous <sup>1</sup>	2012	6,349	18,786,164
	2011	7,554	17,322,545
<b>Total</b>	<b>2012</b>	<b>31,273</b>	<b>\$50,302,012</b>
	<b>2011</b>	<b>28,817</b>	<b>\$39,154,102</b>

<sup>1</sup> Includes alfalfa, beans, canola, carrots, cole crops, corn, cucumber, melon, peppers, rice, root crops, safflower, sorghum, squash, tomatoes and wild rice.

Non-Certified Seed	Harvested		Total
	Year	Acreage	
Pasture and Grass	2012	512	\$4,357,060
	2011	489	4,306,875
Vine Seed	2012	3,167	4,047,853
	2011	2,631	7,083,628
Miscellaneous <sup>2</sup>	2012	2,103	5,472,941
	2011	660	2,708,234
<b>Total</b>	<b>2012</b>	<b>5,782</b>	<b>\$13,877,854</b>
	<b>2011</b>	<b>3,780</b>	<b>\$14,098,737</b>

<sup>2</sup> Includes carrots, carrots, Chinese cabbage, cucumber, grasses, melons, native flowers, kohlrabi, oats, onions, safflower, squash, and turnips.

## YOLO COUNTY 2012 EXPORT PARTNERS



<b>Afghanistan</b>	<b>Estonia</b>	<b>Lithuania</b>	<b>Slovenia</b>
<b>Albania</b>	<b>Ethiopia</b>	<b>Malaysia</b>	<b>South Africa</b>
<b>Argentina</b>	<b>France</b>	<b>Marshall Islands</b>	<b>Spain</b>
<b>Armenia</b>	<b>French Polynesia</b>	<b>Mexico</b>	<b>Sri Lanka</b>
<b>Australia</b>	<b>Georgia</b>	<b>Micronesia, Fed. States</b>	<b>Sweden</b>
<b>Austria</b>	<b>Germany</b>	<b>Moldova, Republic of</b>	<b>Switzerland</b>
<b>Bahrain</b>	<b>Greece</b>	<b>Mongolia</b>	<b>Syrian Arab Republic</b>
<b>Belarus</b>	<b>Guatemala</b>	<b>Morocco</b>	<b>Taiwan</b>
<b>Belgium</b>	<b>Honduras</b>	<b>Netherlands</b>	<b>Thailand</b>
<b>Brazil</b>	<b>Hong Kong</b>	<b>New Zealand</b>	<b>Trinidad and Tobago</b>
<b>Bulgaria</b>	<b>Hungary</b>	<b>Nicaragua</b>	<b>Tunisia</b>
<b>Canada</b>	<b>India</b>	<b>Norway</b>	<b>Turkey</b>
<b>Chile</b>	<b>Indonesia</b>	<b>Pakistan</b>	<b>Tuvalu</b>
<b>China</b>	<b>Israel</b>	<b>Palestinian Territory</b>	<b>Uganda</b>
<b>Colombia</b>	<b>Italy</b>	<b>Peru</b>	<b>Ukraine</b>
<b>Costa Rica</b>	<b>Japan</b>	<b>Philippines</b>	<b>United Arab Emirates</b>
<b>Croatia</b>	<b>Jordan</b>	<b>Poland</b>	<b>United Kingdom</b>
<b>Cyprus</b>	<b>Kenya</b>	<b>Portugal</b>	<b>Uruguay</b>
<b>Czech Republic</b>	<b>Korea, Republic of</b>	<b>Qatar</b>	<b>Uzbekistan</b>
<b>Denmark</b>	<b>Kuwait</b>	<b>Romania</b>	<b>Vanuatu</b>
<b>Dominican Republic</b>	<b>Latvia</b>	<b>Russian Federation</b>	<b>Venezuela, Bol. Rep.</b>
<b>Ecuador</b>	<b>Lebanon</b>	<b>Saudi Arabia</b>	<b>Viet Nam</b>
<b>Egypt</b>	<b>Libya</b>	<b>Serbia</b>	<b>Yemen</b>
<b>El Salvador</b>	<b>Libyan Arab Jamahiriya</b>	<b>Singapore</b>	

# Fruit & Nut Crops

	Production			Value		
	Year	Harvested Acreage	Per Acre	Total Tons	Per Ton	Total
Almonds	2012	14,748	0.75	11,061	\$3,744	\$41,412,384
(Meats)	2011	14,684	0.75	11,013	2,404	26,479,988
Olives (oil) *	2012	1,503	3.45	5,185	411	2,131,035
Prunes,	2012	1,851	2.85	5,275	1,152	6,076,800
Dried	2011	2,047	2.87	5,875	1,136	6,673,001
Walnuts,	2012	13,357	1.36	18,166	2,713	49,284,358
All	2011	11,640	1.41	16,412	2,042	33,506,903
Miscellaneous <sup>1</sup>	2012	1,558				11,241,575
	* 2011	1,483				6,372,456
<b>Total</b>	<b>2012</b>	<b>33,017</b>				<b>\$110,146,152</b>
	<b>2011</b>	<b>29,854</b>				<b>\$73,032,348</b>

\* Olives were included in the Miscellaneous category in 2011.

<sup>1</sup> Includes apples, apricots, blackberries, blueberries, cherries, chestnuts, citrus, figs, jujubes, kiwis, mulberries, nectarines, oranges, peaches, pears, pecans, persimmons, pistachios, plums, pomegranates, strawberries, and table grapes.

## Acreage Statistics 2012

Crop	Bearing Acreage	Non-Bearing Acreage	Total Acreage
Almonds	14,748	2,993	17,741
Walnuts	13,357	1,407	14,764



**Sixth Grade 1<sup>st</sup> Place Winner 2013**  
Bella Omand, Our Lady of Grace School

**Sixth Grade 2<sup>nd</sup> Place Winner 2013**  
 Gabriel Garcia, Cesar Chavez Elementary

**Sixth Grade 3<sup>rd</sup> Place Winner 2013**  
 Nick Ross, Whitehead Elementary

**Sixth Grade 4<sup>th</sup> Place Winner 2013**  
 Jalen Jackson, Westmore Oaks Elementary

## Yolo County Wine Tasting Rooms

### Berryessa Gap Vineyards

15 Main Street, Winters  
 (530) 795-3201  
[www.berryessagap.com](http://www.berryessagap.com)  
 Thursday 4:30 p.m. to 8:30 p.m.  
 Friday & Saturday 11:30 a.m. to 8:30 p.m.  
 Sunday 11:30 a.m. to 4:30 p.m.

### Berryessa Gap Winery & Tasting Room

27260 Highway 128, Winters  
 Tuesday-Sunday 11:00 a.m. to 4:00 p.m.  
 or by appointment

### Bogle Vineyards

37783 County Road 144, Clarksburg  
 (916) 744-1139  
[www.boglewinery.com](http://www.boglewinery.com)  
 Monday-Friday 10:00 a.m. to 5:00 p.m.  
 Saturday and Sunday 11:00 a.m. to 5:00 p.m.

### Capay Valley Vineyards

13757 State Highway 16, Brooks  
 (530) 796-4110  
[www.capayvalleyvineyards.com](http://www.capayvalleyvineyards.com)  
 Saturday and Sunday 12:00 p.m. to 5:00 p.m.

### Fiddlehead Cellars Tasting Room & Business Office

606 Peña Drive, Suite 500, Davis  
 (530) 756-4550  
[www.fiddleheadcellars.com/taste-with-us.html](http://www.fiddleheadcellars.com/taste-with-us.html)  
 Open for weekend tastings by appointment

### Old Sugar Mill

#### Ten Wineries, One Location

Draconis by Matt Powell  
 Todd Taylor  
 Three Wine Company  
 Heringer Estates Family Vineyards & Winery  
 Elevation Ten  
 Rendez-vous Winery  
 Merlo Family Vineyards  
 Clarksburg Wine Company,  
 Due Vigne di Famiglia  
 Carvalho Family Winery  
 35265 Willow Avenue, Clarksburg  
 (916) 744-1615  
[www.oldsugarmill.com](http://www.oldsugarmill.com)  
 Daily 11:00 a.m. to 5:00 p.m.

## Wine Tasting Rooms (cont.)

### River Grove Winery

52183 Clarksburg Road, Clarksburg  
 (916) 744-9000  
[www.rivergrovewinery.com](http://www.rivergrovewinery.com)  
 Call for dates, times and locations of tastings

### RootStock

#### Tasting Room and Gift Shop

22 Main Street, Winters  
 (530) 794-6008  
[www.roostockgifts.com](http://www.roostockgifts.com)  
 Wednesday 10:00 a.m. to 6:00 p.m.  
 Thursday-Saturday 10:00 a.m. to 8:00 p.m.  
 Sunday 11:00 a.m. to 3:00 p.m.  
 Live music Fridays 6:00 p.m. to 8:00 p.m.

### Satiety Winery & Café

40101 County Road 25A, Woodland  
 (530) 661-0680  
 Monday-Sunday 11:00 a.m. to 6:00 p.m.

### Turkovich Family Wines

304 Railroad Avenue, Winters  
 (530) 795-3842  
[www.turkovichwines.com](http://www.turkovichwines.com)  
 Sunday-Wednesday 12:00 p.m. to 5:00 p.m.  
 Thursday-Saturday 12:00 p.m. to 9:00 p.m.  
 Or by appointment

### Wilson Vineyards

50400 Gaffney Road, Clarksburg  
 (916) 744-1456  
[www.wilsonvineyards.com](http://www.wilsonvineyards.com)  
 By appointment only

## Additional Wineries:

### Roots to Wine

#### Marketing Collaborative

Berryessa Gap Vineyards  
 Capay Valley Vineyards  
 Casey Flat Ranch  
 Crew Wine Co.  
 Julie LePla Winery  
 Putah Creek Winery  
 Route 3 Wines  
 Simas Family Wines  
 Turkovich Family Wines  
 Séka Hills  
[www.rootstowine.com](http://www.rootstowine.com)

## Livestock & Poultry

	Production			Value	
	Year	Head	Live-Weight	Per Cwt	Total
Cattle and Calves	2012	19,344	124,382	\$139.00	\$17,289,098
	2011	18,780	117,375	118.00	13,850,250
Sheep and Lambs	2012	12,273	15,341	140.00	2,147,740
	2011	12,919	18,086	135.00	2,441,600
Miscellaneous <sup>1</sup>	2012				946,075
	2011				860,069
<b>Total</b>	<b>2012</b>				<b>\$20,382,913</b>
	<b>2011</b>				<b>\$17,151,919</b>

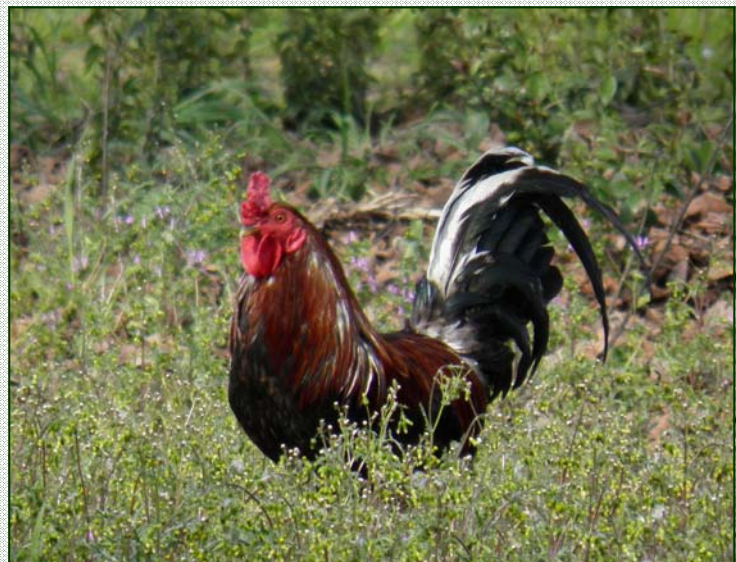
<sup>1</sup> Includes all poultry, hogs, slaughter sheep and game birds.

## Apiary, Livestock & Poultry Products

	Year	Total
Apiary <sup>2</sup>	2012	\$5,548,616
	2011	5,441,779
Miscellaneous <sup>3</sup>	2012	5,957,809
	2011	5,516,460
<b>Total</b>	<b>2012</b>	<b>\$11,506,425</b>
	<b>2011</b>	<b>\$10,958,239</b>

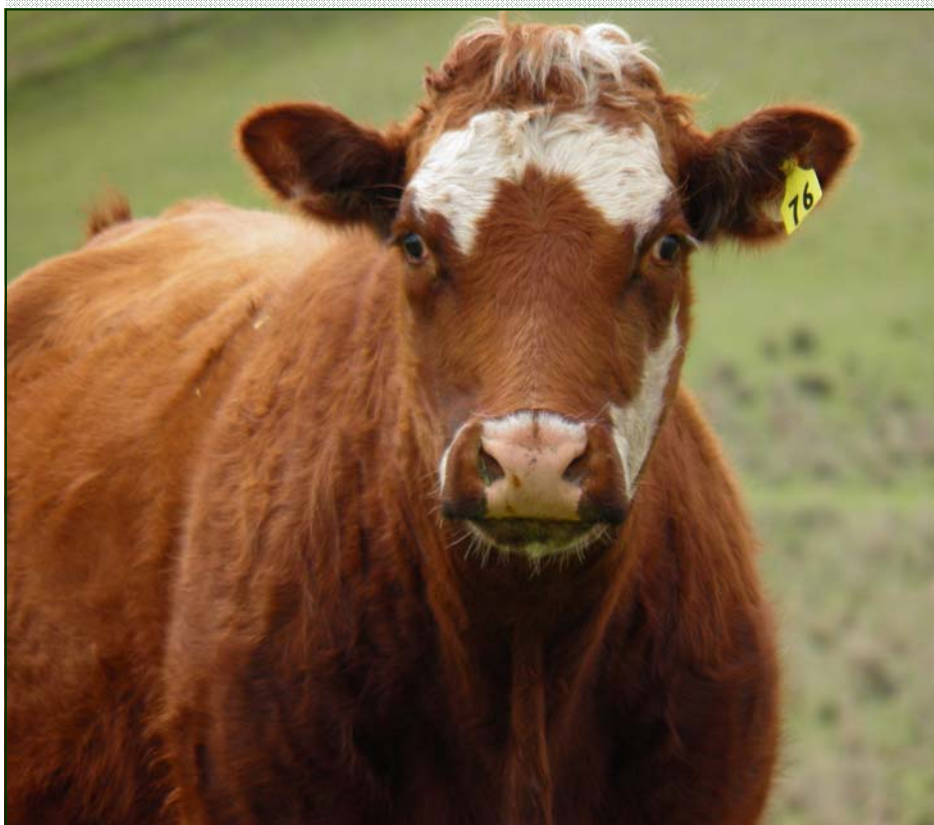
<sup>2</sup> Includes honey, pollination, package bees, queens, colonies and wax.

<sup>3</sup> Includes eggs, milk and wool.



# Commodity Summary

Commodity	2012	2011	2010
Field Crops	\$193,849,465	\$173,570,832	\$131,734,581
Vegetable Crops	126,453,252	128,320,846	106,320,261
Fruit & Nut Crops	110,146,152	73,032,348	55,858,293
Wine Grapes	66,293,028	48,757,213	45,649,602
Seed Crops	64,179,866	53,252,839	40,738,417
Organic Production	40,162,333	30,230,248	26,243,200
Livestock & Poultry	20,382,913	17,151,919	16,821,447
Apiary, Livestock & Poultry Products	11,506,425	10,958,239	10,743,357
Nursery Products	12,793,070	13,975,185	9,432,534
<b>Total</b>	<b>\$645,766,504</b>	<b>\$549,249,669</b>	<b>\$443,541,692</b>



## Yolo County Community Supported Agriculture

Community Supported Agriculture (CSA) consists of members or "shareholders" of a farm or garden who cover the anticipated costs of the farm operation and farmer's salary. The consumer joins a CSA program and purchases, in advance, a share of the farm's crop, and in exchange is provided a part of the crop each week, delivered to a predetermined spot, usually near the customer's home or worksite.

### Farm Fresh to You

Farming organically since 1976, this second-generation family farm partners with other local farms to provide a great variety of seasonal, organic produce through home delivered CSA boxes designed to fit your household size, cooking preferences and desired delivery frequency. Farm Fresh To You's farm, Capay Organic, grows 60 types of fruits and vegetables with 130 varieties.

23808 State Highway 16, Capay, CA 95607  
(800) 796-6009  
[www.farmfreshtoyou.com](http://www.farmfreshtoyou.com)

### Full Belly Farm

Full Belly is a 200-acre, highly diversified organic farm in the Capay Valley, founded in 1985 by Paul Muller and Dru Rivers. Today, there are two more partners, Judith Redmond and Andrew Brait.

P.O. Box 251, Guinda, CA 95637  
(530) 796-2214  
[www.fullbellyfarm.com](http://www.fullbellyfarm.com)

### Good Humus Produce

Owners Jeff & Annie Main settled in the Capay Valley in the 1970s, and over the years created a small, diversified, organic family farm.

12255 County Road 84A, Capay, CA 95607  
(530) 787-3187  
[www.goodhumus.com](http://www.goodhumus.com)

### Live Oak Farm

Live Oak Farm is a small organic farm located in the Capay Valley. They grow a variety of vegetables, fruits, nuts, olives for olive oil, and flowers.

P.O. Box 73, Rumsey, CA 95679  
3880 Hwy 16, Rumsey, CA  
(530) 796-4084

## Yolo County Community Supported Agriculture (cont.)

### Pacific Star Gardens

Owned by Robert & Debra Ramming

20872 County Road 99, Woodland, CA 95695  
(530) 666-7308

pacificstargardens.webs.com  
e-mail: pacificstargardens@yahoo.com

### Riverdog Farm

Owned by partners Trini Campbell & Tim Mueller, Riverdog produces a wide variety of organic fruits, vegetables, and flowers on 200 acres in the Capay Valley.

P.O. Box 42, Guinda, CA 95637  
(530) 796-3802  
www.riverdogfarm.com

### Terra Firma Farm

Founded by co-owner Paul Holmes in 1990, Terra Firma started on one acre outside Winters. In 1994, Paul Underhill joined as a partner, and today Terra Firma is a 99 acre organic fruit and vegetable farm.

P.O. Box 836, Winters, CA 95694  
(530) 756-2800  
www.terrafirmafarm.com



# Sustainable Agriculture Report 2012

## Biological Control

Pest	Agent/Mechanism	Scope of Program
Puncture Vine <i>Tribulus terrestris</i>	Seedhead Weevil <i>Microlarinus lareynil</i>	Countywide
Yellow Starthistle <i>Centaurea solstitialis</i>	Seedhead Weevil <i>Bandasternus orientalis</i>	Countywide
	Hairy Weevil <i>Eustenopus villosus</i>	Countywide
	Yellow Starthistle Rust <i>Puccinia jaceae var. solstitialis</i>	4 sites
Ash Whitefly <i>Syphoninus phillyrae</i>	Parasitic Wasps <i>Encarsia partenopea</i>	Countywide

## Pest Detection

Pest	Number of Traps Deployed	Pest	Number of Traps Deployed
Apple Maggot	86	Light Brown Apple Moth	117
Asian Citrus Psyllid	115	McPhail Traps – Fruit Flies	30
European Grapevine Moth	12	Mediterranean Fruit Fly	117
Glassy-Winged Sharpshooter	126	Melon Fruit Fly	30
Gypsy Moth	144	Oriental Fruit Fly	30
Japanese Beetle	30	Vine Mealybug	32
Khapra Beetle	245		

## Pest Exclusion

Pest	Type of Shipment	Inspections/Rejections
Various Pests	Truck Shipments	33/0
Various Pests	Post Office / UPS	647/20
Gypsy Moth	Household Goods Shipments	21/0

Crops	Mechanism	Scope of Program
Export Commodities	Federal & Domestic Certification	7,191 certificates issued
Export Seed	Field Inspection	1,058 sites/28,279 acres

## Pest Eradication

Pest	Agent/Mechanism	Scope of Program
Distaff Thistle	Chemical, Mechanical	1 site
Heart Podded Hoary Cress	Chemical, Mechanical	1 site
Iberian Thistle	Chemical, Mechanical	1 site
Oblong Spurge	Chemical, Mechanical	1 site
Purple Loosestrife	Chemical, Mechanical	Countywide
Purple Starthistle	Chemical, Mechanical	Countywide
Russian Knapweed	Chemical, Mechanical	Countywide
Skeleton Weed	Chemical, Mechanical	1 site

## Organic Farming

### Number of Registered Farms:

97 farms registered organic

23 farms certified organic by Yolo Certified Organic Agriculture (YCOA)



## Yolo County Certified Farmers Markets

---

The certified farmers market concept is an effort to re-establish the traditional link between farmers and consumers. Certified farmers markets are locations approved by the agricultural commissioner where certified farmers offer for sale only those agricultural products they grow themselves.

### Davis Farmers Market

---

Central Park  
4th & C Street, Davis  
[www.davisfarmersmarket.org](http://www.davisfarmersmarket.org)

March through October: Wednesdays 4:30 p.m. to 8:30 p.m.  
Saturdays 8:00 a.m. to 1:00 p.m.  
November through February: Wednesdays 2:00 p.m. to 6:00 p.m.  
Saturdays 8:00 a.m. to 1:00 p.m.

### UC Davis Farmers Market

---

Silo building outside plaza  
University of California, Davis

March through November: Wednesdays 9:30 a.m. to 2:30 p.m.

### Sutter Davis Hospital Farmers Market

---

2000 Sutter Place, Davis

May through August: Thursdays 10:00 a.m. to 2:00 p.m.

### West Sacramento Farmers Market

---

1271 West Capitol Avenue, West Sacramento

June through September: Thursdays 4:30 p.m. to 7:30 p.m.

### Woodland Certified Farmers Market

---

Heritage Plaza at Main and Second Streets, Woodland

May through October: Saturdays 9:00 a.m. to 12:00 p.m.

### Woodland Certified Farmers Market Woodland Healthcare Campus

---

1325 Cottonwood Street, Woodland

May through October: Tuesdays 4:30 p.m. to 7:00 p.m.



**Davis Joint Unified School District**

Rafaelita Curva, Director, Student Nutrition Services  
 1919 Fifth St., Davis, CA 95616  
 rcurva@djud.k12.ca.us / (530) 759-2186

**Esparto Unified School District**

Becky Jacobs, Director, Food Services (retired)  
 26675 Plainfield St., Esparto, CA 95627  
 (530) 787-4151

**Washington Unified School District**

Karri L. Pina, Director, Food & Nutrition Services  
 930 Westacre Rd, West Sacramento, CA 95691  
 kpina@wusd.k12.ca.us / (916) 375-7604 ext.6

**Winters Joint Unified School District**

Cathleen Olsen, Director, Student Nutrition Services  
 909 West Grant Ave., Winters, CA 95694  
 colsen@wintersjUSD.org / (530) 795-6109

**Woodland Unified School District**

Spencer Springer, Director, Food Services  
 902 College St., Woodland, CA 95695  
 spencer.springer@wjUSD.org / (530) 406-5956

**Yolo County Head Start**

Stephanie Gray, Nutrition Services Coordinator  
 1280 Santa Anita Ct, Ste 140, Woodland, CA 95776  
 gray@ycoe.org / (530) 668-3105



# Farm to School Yolo

The Yolo County Department of Agriculture is pleased to have completed a successful first year of Farm to School Yolo. The program, under the leadership of Agricultural Commissioner John Young, aims to increase the amount of fresh, local produce served in Yolo County school lunches. It is part of a three-year California Department of Food & Agriculture Specialty Crop Block Grant which also supports the Harvest Hub Yolo website, professional development cooking classes for schools in Yolo County and a farmer workshop on selling to school food service. The program aims to increase school district procurement of California specialty crops from 15 to 35 percent.

The Farm to School Yolo program has also developed a produce aggregation model which allows smaller farms, without the capability of delivering to multiple locations, the opportunity to aggregate their products at one warehouse. The concept increases both the diversity of products and the amount of local foods in school lunches. Year two of the grant will include more school food service staff development classes, another farmer training to further the developing aggregation model and work on a Farm to School guidebook.



Growers, restaurants featuring local produce and producers interested in selling to school food service can contact Farm to School Yolo Outreach Coordinator Nicole Sturzenberger via e-mail: [info@harvesthubyolo.org](mailto:info@harvesthubyolo.org) and are encouraged to visit the website: [www.harvesthubyolo.org](http://www.harvesthubyolo.org). All are also invited to follow Harvest Hub Yolo on Facebook ([www.facebook.com/pages/Harvest-Hub-Yolo/463980273622659](https://www.facebook.com/pages/Harvest-Hub-Yolo/463980273622659)) and Twitter (<https://twitter.com/harvesthubyolo>).

## Harvest of the Month

Yolo County schools participate in the Harvest of the Month program as a way to promote regional specialty crops. Each month, schools feature the same local seasonal fruit or vegetable and use supporting nutrition education materials. Harvest of the Month is a Network for a Healthy California program. For more information, visit:

<http://harvesthubyolo.org/farm-to-school/harvest-of-the-month-yolo>

2013-14 School Year Harvest of the Month		
Month	Featured Fruit	Featured Vegetable
August	Stone fruit	Zucchini
September	Apples	Tomatoes
October	Pears	Sweet Peppers
November	Persimmons	Cauliflower
December	Citrus	Cabbage
January	Citrus	Endives
February	Citrus	None
March	Dried Fruits & Nuts	Carrots
April	Strawberries	Asparagus
May	Strawberries	Spinach



# Al Barth

Agricultural Inspector Al Barth is retiring from the Yolo County Department of Agriculture, after serving the county for eleven years. Prior to beginning a career with Yolo County in June 2002, Al worked in Sutter County as an Agricultural Biologist for four years and at John Taylor-Dixon, as a Pest Control Advisor for one year. Al also spent thirty years farming in Yolo County, and has served as President of the Yolo County Farm Bureau.

Al has worked to a great extent in the Hazardous Materials / Hazardous Waste (CUPA) program. He was also one of the key pesticide use enforcement inspectors. Most everyone has met Al and experienced first-hand his expertise, and genuinely good nature. Al has used those skills to build effective relationships with the growers throughout the county.

In his retirement, Al will be spending more time with his lovely bride of 46 years, Brigitte, his sons Andreas and Erin, and his 2 granddaughters. Most likely Al will be found at the ranch, working on various projects. Al's skills and historical knowledge will be greatly missed by the Yolo County Agriculture Department. We wish him well in his retirement.



**CUPA MAN & INSPECTOR  
EXTRAORDINAIRE**

## Board of Supervisors

Supervisor Duane Chamberlain, District 5, Chair  
Supervisor Mike McGowan, District 1, Vice-Chair  
Supervisor Don Saylor, District 2  
Supervisor Matt Rexroad, District 3  
Supervisor Jim Provenza, District 4

## County Administrator

Patrick S. Blacklock

## Department of Agriculture and Weights & Measures Staff

John Young, Agricultural Commissioner, Sealer of Weights and Measures  
Dennis Chambers, Chief Deputy Agricultural Commissioner, Sealer of Weights and Measures

Alfred Barth, Agricultural and Standards Inspector IV  
Tom Boone, Agricultural and Standards Technician  
Barbara Christopherson, Administrative Clerk II  
Leslie Churchill, Administrative Assistant  
Amy DelBondio, Agricultural and Standards Inspector IV  
Cecilia Gonzales, Administrative Clerk I  
David Guerrero, Deputy Sealer  
Jason Kincanon, Agricultural and Standards Technician  
Jenni King, Deputy Commissioner  
Michelle Lawson, Agricultural and Standards Inspector IV  
Bill Lyon, Deputy Commissioner  
Molly Quisenberry, Agricultural and Standards Inspector I  
Laurie Schuler-Flynn, Agricultural and Standards Inspector IV  
Elpidio Tijerino, Agricultural and Standards Inspector IV

## Seasonal Staff

Ray Perkins  
Ralph Flores (CASS)  
Daniel Fok (CASS)  
Deborah Simpson (CASS)  
Sualo Tijerino (CASS)  
Kyle Young (CASS)  
Zachary Yun (CASS)

---

This Crop Report, and every Crop Report since 1937, is available on the Yolo County Agriculture Department's website. Along with the Crop Report archives, online information is also available about the roles, responsibilities, services and programs provided by the Yolo County Agriculture Department. Electronic forms and handouts can be found as well as links to other agriculture-related resources. In some cases, visitors to certain webpages can subscribe to receive e-mail updates.

Visit the Yolo County Agriculture Department's website: [www.yolocounty.org/Index.aspx?page=469](http://www.yolocounty.org/Index.aspx?page=469)





**Yolo County Agriculture Department  
70 Cottonwood Street  
Woodland, California 95695**