

# SACRAMENTO COUNTY 2013

## CROP & LIVESTOCK REPORT



California ranks first in the United States for agricultural cash receipts followed by Iowa, Texas, Nebraska & Illinois. As is true of California in general, the Sacramento area is rich in agriculture; the fertile Sacramento Valley region produces a multitude of agricultural products including fruits and vegetables, rice and other grains, meat, nuts and milk.

So it only seems fitting that in 2013 Sacramento proudly proclaimed itself –

## **AMERICA'S FARM-TO-FORK CAPITAL**



To bring awareness to the Sacramento region's rich agricultural and culinary scene – dinners, tours, classes and festivals sprang up faster than Delta asparagus in the spring!

At the inaugural festival held on the capital mall, over 25,000 people attended. The event was highlighted by a cattle drive from the Sacramento River to the capitol building



Photo by: Juli Jensen, Sacramento County Agricultural Commissioner

Activities such as harvest tours, walking food history tours, tagging along with a local chef to a Farmer's Market to buy produce, numerous wine tastings and dinner on the iconic Tower Bridge, were all but a few of the offerings.

For more information on Farm-to-Fork events in 2014: <http://www.farmtofork.com/>



**Agricultural Commissioner/  
Director of Weights & Measures**

Juli D. Jensen

Agricultural Commissioner  
Sealer of Weights and Measures

**Divisions**

Agriculture  
Weights and Measures

## County of Sacramento

To: Karen Ross, Secretary  
California Department of Food and Agriculture

and

The Honorable Board of Supervisors  
Chair Jimmie Yee  
District 1 Phil Serna  
District 3 Susan Peters  
District 4 Roberta MacGlashan  
District 5 Don Nottoli

In accordance with Sections 2272 and 2279 of the California Food and Agriculture Code, I am pleased to submit the 2013 Sacramento County Annual Crop and Livestock Report. This report includes the acreage, production and gross value of agricultural commodities in Sacramento County as well as the invasive pest activities and our response to those pests. Sacramento County's 2012 crop production value of \$460,650,586 was the highest ever recorded for the county. Sacramento County's 2013 crop production value of \$457,348,055 represents only a .7% decrease from the 2012 value which is not statistically significant and is still the second highest recorded crop production value in Sacramento County history.

Wine grapes continue to top the Sacramento County crop values at \$141,207,000 and represent almost a third of Sacramento County's production value. There was a small decrease in wine grape acreage due to older vines being pulled out and replaced by new young vines that are not in production yet. Several new vineyards have been planted but are also not in production yet. We should start to see another increase in a few years as these vines come into production. The 2013 price per ton for wine grapes was also down 6.5%, contributing to the decrease in 2013 wine grape production value. Milk production remains as the number two commodity at \$64,653,000 which is a 10% increase over the 2012 value. This is strictly the result of an increase in price as our production hundredweight was static. Poultry which was the number three commodity in 2012 had a 22% drop in production value which dropped them back to the number four commodity position. This drop is due to a significant decrease in the number of birds produced. Though Sacramento County ranks number 1 in the state for pear production, our county acreage continues to decrease slightly. With an almost 30% increase in price per ton in 2013, Bartlett pears moved up to Sacramento's number three commodity. Field corn value is down 20% but again, this is due to a 20% drop in price.

It is interesting to note that rice not only remained in Sacramento's ten leading farm commodities but also increased in value by 46.5% due to an increase in acreage and a small increase in yield. The number of head and liveweight of cattle and calves sold increased from 2012. This may be due to producers decreasing herd sizes while prices are relatively high in anticipation of additional dry years. Nursery production appears to have leveled out from its downward slope and made a slight increase in 2013 as the housing market has started to come out of its slump.

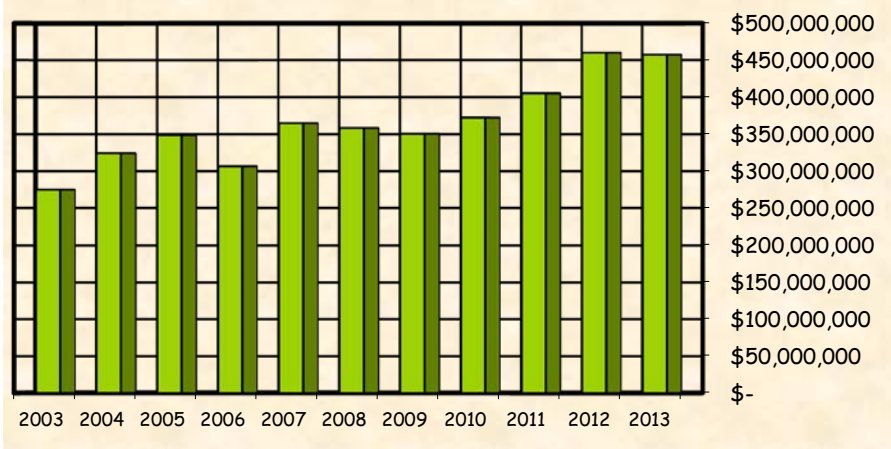
This report represents estimated values based upon the most common first point of sale of the commodity. It must be emphasized that the values in this report are gross values and in no way reflect net income. These values do not take into account the various costs of production, marketing, or transportation. I would like to thank those that provide the information that allows us to compile this report, the growers, organizations, and government agencies. I would also like to express my appreciation to our staff members, Laura McCready and Ramona Saunders, who worked so hard on this report and to our IT Analyst, Vicki Brewer, for the report design.

Respectfully submitted,

Juli Jensen  
Agricultural Commissioner

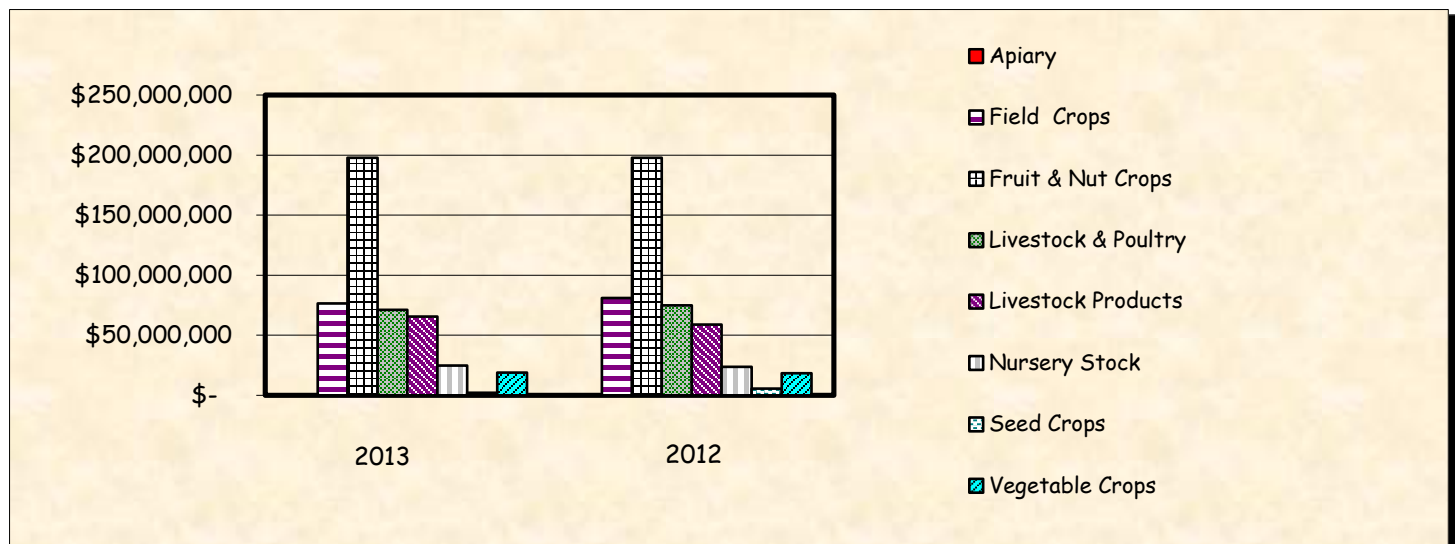
# GROSS VALUE OF AGRICULTURAL PRODUCTION 2003 - 2013

2013	\$	457,348,055
2012	\$	460,133,586
2011	\$	405,211,000
2010	\$	372,286,000
2009	\$	350,475,000
2008	\$	358,280,000
2007	\$	364,859,000
2006	\$	306,487,000
2005	\$	348,885,000
2004	\$	324,168,000
2003	\$	274,900,000



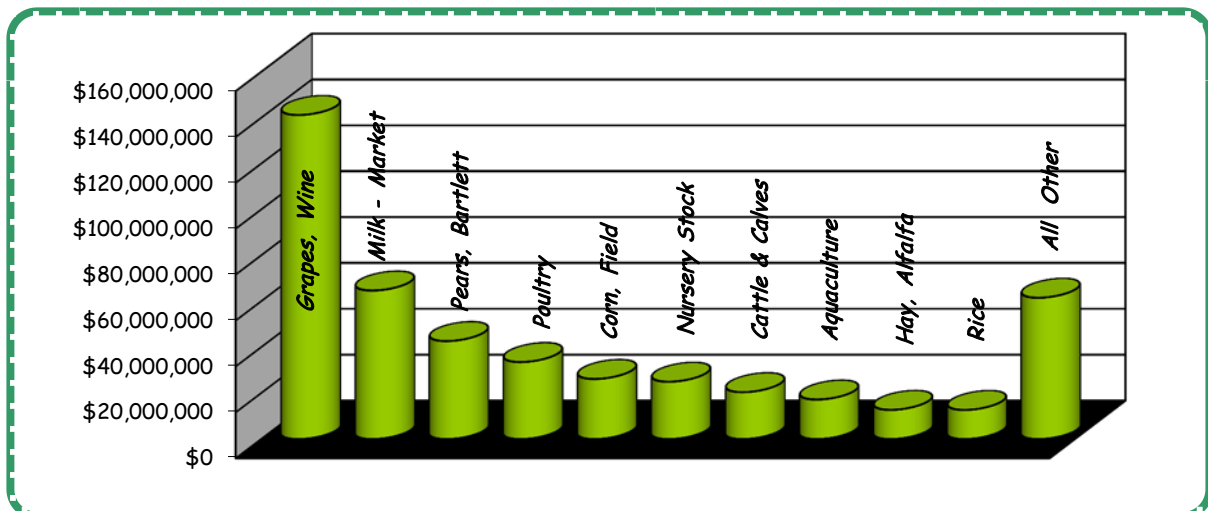
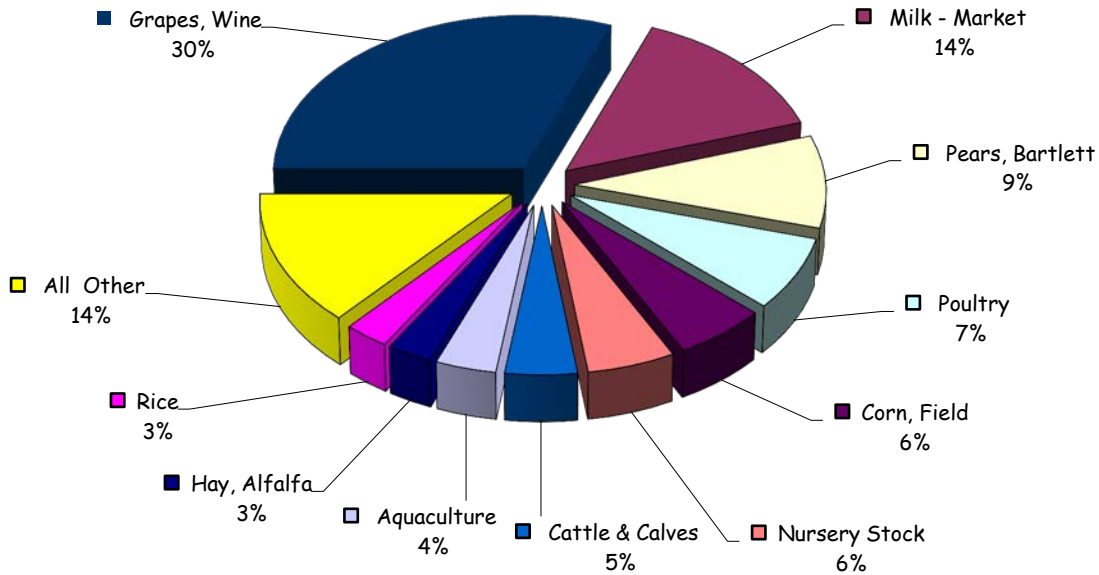
## SUMMARY OF PRODUCTION

	2013 Value of Production	2012 Value of Production
Apiary	\$ 58,000	\$ 50,000
Field Crops	\$ 76,565,000	\$ 81,030,000
Fruit & Nut Crops	\$ 197,863,000	\$ 197,817,000
Livestock & Poultry	\$ 71,309,055	\$ 74,804,586
Livestock Products	\$ 65,526,000	\$ 58,884,000
Nursery Stock	\$ 24,916,000	\$ 23,642,000
Seed Crops	\$ 2,202,000	\$ 5,511,000
Vegetable Crops	\$ 18,909,000	\$ 18,395,000



# THE TEN LEADING FARM COMMODITIES - 2013

Grapes, Wine	\$141,207,000
Milk - Market	64,653,000
Pears, Bartlett	42,630,000
Poultry	33,489,000
Corn, Field	26,131,000
Nursery Stock	24,916,000
Cattle & Calves	20,366,000
Aquaculture	17,165,000
Hay, Alfalfa	12,662,000
Rice	12,630,000
All Other	61,499,055



# FIELD CROPS

Item	Year	PRODUCTION			VALUE		
		Harvested Acreage	Per Acre	Total	Unit	Per Unit	Total
Corn, Field	2013	28,110	5.3	148,980	TON	175.40	26,131,000
	2012	28,521	5.2	148,310	TON	220.20	32,658,000
Corn, Silage	2013	6,178	26.5	163,720	TON	40.50	6,631,000
	2012	5,708	26.9	153,550	TON	40.00	6,142,000
Hay, Alfalfa	2013	12,934	5.0	64,700	TON	195.70	12,662,000
	2012	12,584	6.4	80,500	TON	204.50	16,462,000
Hay, Oat	2013	3,082	1.9	5,860	TON	157.32	922,000
	2012	304	2.9	880	TON	151.20	133,000
Hay, Other (Forage and pasture hay)	2013	1,425	1.87	2,660	TON	137.46	366,000
	2012	2,575	2.75	7,080	TON	205.40	1,454,000
Oats	2013	see misc.		0	TON		-
	2012	787	3.3	2,600	TON	158.40	412,000
Misc Silage or Greenchop	2013	5,441	12.3	67,140	TON	29.61	1,988,000
	2012	4,725	12.9	60,950	TON	22.90	1,396,000
Pasture Irrigated	2013	17,500			ACRE	140.00	2,450,000
	2012	17,700			ACRE	140.00	2,478,000



Watermark Photo by: Laura McCready, Sr Ag & Standards

**FARMING-** *it's  
not just a JOB, it's  
a way of LIFE.*



**PRODUCTION**

**VALUE**

Item	Year	Harvested		Per		Per		Total
		Acreage	Per Acre	Total	Unit	Unit	Total	
<b>Range</b>	<b>2013</b>	<b>60,000</b>			<b>ACRE</b>	<b>\$ 25.00</b>	<b>\$</b>	<b>1,500,000</b>
	2012	61,000			ACRE	\$ 25.00	\$	1,525,000
<b>Rice</b>	<b>2013</b>	<b>8,363</b>	<b>4.4</b>	<b>36,800</b>	<b>TON</b>	<b>343.20</b>		<b>12,630,000</b>
	2012	5,899	4.2	24,780	TON	348.00		8,623,000
<b>Ryegrass</b>	<b>2013</b>	<b>3,393</b>	<b>3</b>	<b>10,180</b>	<b>TON</b>	<b>140.20</b>		<b>1,427,000</b>
	2012	3,450	3	10,350	TON	70.20		727,000
<b>Safflower</b>	<b>2013</b>	<b>2,356</b>	<b>1.4</b>	<b>3,300</b>	<b>TON</b>	<b>518.31</b>		<b>1,710,000</b>
	2012	1,934	1.0	1,930	TON	502.10		969,000
<b>Sudangrass</b>	<b>2013</b>	<b>2,301</b>	<b>5.0</b>	<b>11,510</b>	<b>TON</b>	<b>131.43</b>		<b>1,513,000</b>
	2012	2,020	3.4	6,870	TON	140.30		964,000
<b>Sunflower</b>	<b>2013</b>	<b>912</b>	<b>1.5</b>	<b>1,370</b>	<b>TON</b>	<b>590.00</b>		<b>808,000</b>
	2012	see misc.		0	TON			-
<b>Wheat</b>	<b>2013</b>	<b>6,946</b>	<b>3.0</b>	<b>20,840</b>	<b>TON</b>	<b>242.31</b>		<b>5,050,000</b>
	2012	5,665	2.6	14,730	TON	221.80		3,267,000
<b>Misc. Field</b>	<b>2013</b>	<b>3,191</b>	Barley, dry beans, clover, hops, and oat grain					<b>777,000</b>
	2012	4,015	Barley, dry beans, misc. silage, sorghum milo, sunflower, triticale, and organic rice					3,820,000
<b>Total</b>	<b>2013</b>	<b>162,131</b>					<b>\$</b>	<b>76,565,000</b>
	2012	156,887					\$	81,030,000

# FRUIT AND NUT CROPS

Item	Year	P R O D U C T I O N				V A L U E		
		Harvested Acreage	Per Acre	Total	Unit	Per Unit	Total	
Apples	2013	see misc.		0	TON		\$ 0	
	2012	346	14.2	4,913	TON	\$ 392.40	\$ 1,928,000	
Cherries	2013	1,256	1.8	2,260	TON	3,026.96	6,842,000	
	2012	1,036	2.9	3,004	TON	2,472.80	7,429,000	
Grapes, Wine	2013	31,522	8.4	264,785	TON	533.29	141,207,000	
	2012	32,365	8.1	262,157	TON	570.40	149,534,000	
Pears	2013	5,264	21.1	111,068	TON	383.82	42,630,000	
	2012	5,381	21.6	116,230	TON	266.50	30,975,000	
Strawberries	2013	100.4	3.0	301	TON	3,999.00	1,204,000	
	2012	91.0	4.5	410	TON	3,000.00	1,229,000	
Walnuts	2013	800.5	1.2	993	TON	2,658.57	2,639,000	
	* 2012	800.5	1.6	1,281	TON	2,575.80	3,299,000	
Miscellaneous	2013	482	Almonds, apples, apricots, chestnuts, blueberries, kiwis, nectarines, olives, peaches, organic pears, pistachios, pomegranates and raspberries					3,341,000
	2012	621						3,423,000
Total	2013	39,424						\$ 197,863,000
	2012	40,641						\$ 197,817,000



Photo by: Lisa Arbegast, Sr Ag & Standards Inspector

# APIARY PRODUCTS



Photo by: Rashell Veerkamp, Ag & Standards Inspector I

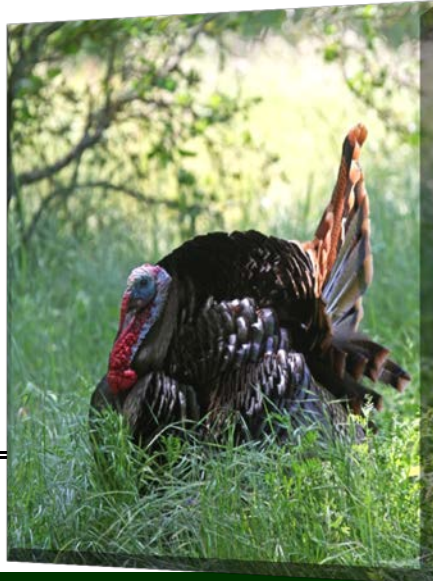
			V A L U E
<b>Apiary</b>	<b>2013</b>	Honey and pollination	<b>\$58,000</b>
<b>Products</b>	<b>2012</b>	Honey and pollination	<b>\$50,000</b>

\* Revised



# LIVESTOCK AND POULTRY

Item	Year	P R O D U C T I O N			V A L U E		
		No. of Head	Liveweight	Unit	Per Unit	Total	
Cattle & Calves	2013	28,374	206,197	CWT	\$ 98.77	\$ 20,366,000	
	2012	26,606	165,402	CWT	\$ 98.68	\$ 16,322,000	
Aquaculture	2013					17,165,000	
	2012					15,022,000	
Poultry	2013	Chickens and Turkeys				33,489,000	
	2012	Chickens and Turkeys				43,162,000	
Livestock Other	2013	Hogs & pigs, goats, and sheep				289,055	
	2012	Hogs & pigs, goats, and sheep				298,586	
Total	2013				\$	71,309,055	
	2012				\$	74,804,586	



# LIVESTOCK PRODUCTS

Item	Year	P R O D U C T I O N			V A L U E		
		Production	Unit	Unit	Total		
Milk-Market	2013	3,449,989	CWT	\$ 18.74	\$ 64,653,000		
	2012	3,446,255	CWT	\$ 17.00	\$ 58,586,000		
Milk-Manufacturers	2013	1,256	CWT	18.31	23,000		
	2012	1,047	CWT	19.00	20,000		
Miscellaneous	2013	wool and poultry manure			850,000		
	2012	wool and poultry manure			278,000		
Total	2013				65,526,000		
	2012				58,884,000		



Top Photo by: Ed Williams

Bottom Photo by: Laura McCreedy, Sr Ag & Standards Inspector

# SEED CROPS

Item	Year	P R O D U C T I O N			V A L U E		
		Harvested Acreage	Per Acre	Total	Unit	Per Unit	Total
Clover	2013	1,063	404.0	429,500	LB	1.70	730,000
	2012	889	309.0	274,700	LB	1.66	456,000
Sudan	2013	2,055	2539.0	5,217,600	LB	0.50	2,609,000
	2012	2,374	2375.0	5,638,300	LB	0.49	2,763,000
Sunflower	2013	463	1037.0	480,100	LB	1.34	643,000
	2012			0	LB		-
Miscellaneous	2013	671	Alfalfa, barley, carrot, cucumber, grass, oat, onion, pumpkin, safflower, squash, and watermelon				829,000
	2012	632	Alfalfa, corn, cucumber, eggplant, melon, oat, onion, pumpkin, squash, tomatillo, tomato, and watermelon				2,292,000
Total	2013	2,197					\$2,202,000
	2012	1,521					\$5,511,000

# NURSERY STOCK

Item	Year	Harvested Acreage		Value
Nursery Stock	2013	540.5	Ornamental trees and shrubs, christmas trees, and turf grass	\$ 24,916,000
	2012	396.0	Ornamental trees and shrubs, christmas trees, and turf grass	\$ 23,642,000
Total	2013	540.5		\$ 24,916,000
	2012	396.0		\$ 23,642,000



Photo by: Lisa Arbegast, Sr Ag & Standards Inspector

# VEGETABLE CROPS

Item	Year	PRODUCTION			VALUE		
		Harvested Acreage	Per Acre	Total Unit	Per Unit	Total	
Pumpkin	2013	281	18.5	5,199 TON	100.00	520,000	
	2012	see misc.		0 TON		-	
Tomatoes, Processed	2013	1,766	44.5	78,587 TON	74.43	5,849,000	
	2012	2,638	37.3	98,397 TON	70.45	6,932,000	
Miscellaneous	2013	1,417	Artichokes, asparagus, beans, beets, melons, carrots, cucumbers, eggplants, gourds, green onions, okra, peas, peppers, squash, and fresh tomatoes			12,540,000	
	2012	2,223	cucumbers, dill, eggplants, fresh tomatoes, gourds, green onions, okra, peas, peppers, pumpkins, squash, tomatillos, misc veggies, and organic vegetables			11,463,000	
<b>Total</b>							
	2013	3,464			\$	18,909,000	
	2012	4,861			\$	18,395,000	



Photo by: Rashell Veerkamp, Ag & Standards Inspector I

**Pest Detection Trapping**

Each year from May through October, seasonal insect trappers deploy and maintain over 6,000 detection traps throughout the county. Most of these traps are placed on residential properties with the permission of the homeowner. These traps are useful in letting us know as early as possible that a destructive pest with known economic impact is in our county. The insect traps not only allow Sacramento farmers and nurseries to be on guard, but also serve as official verification to other states and countries that our agricultural commodities are free from pests. In 2013, only Light Brown Apple Moth was detected in Sacramento County.

In 2013, the following numbers of traps were deployed:

Mediterranean Fruit Fly	1102	Glassy-winged Sharpshooter (residential)	1130
Oriental Fruit Fly	528	Glassy-winged Sharpshooter (nursery)	704
Melon Fruit Fly	530	Light Brown Apple Moth (detection)	412
McPhail (all purpose)	530	Light Brown Apple Moth (nursery)	29
Japanese Beetle*	505	Light Brown Apple Moth (cropland)	42
Gypsy Moth	588	Khapra Beetle	62
European Grapevine Moth	6		

*\*These Japanese Beetle detection traps are separate from the JB eradication project traps in Fair Oaks maintained by the California Department of Food and Agriculture.*

## PEST EXCLUSION / EXPRESS CARRIERS

Sacramento County Agricultural Inspectors profiled over 4,700 shipments moved by air freight, rail and truck. UPS and FedEx facilities were also inspected (part time) for shipments that might be carrying potential pests of agriculture and the environment.

Family	Genus	Specie	Common Name
	Alerodiscus	dispersus	Spiraling whitefly
	Kallitaxila	granulata	Grainy planthopper
	Pheidole	sp.	Ant
Myridae			Bug
Phylomycidae			Slug
Tettigoniidae			Katydid



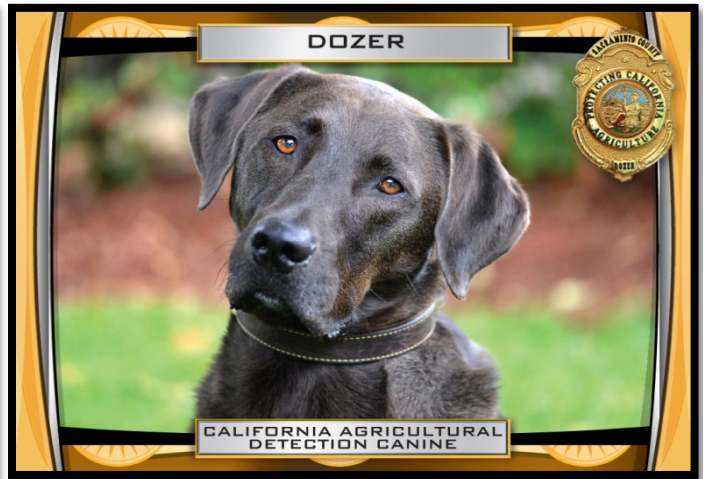
Hawaiian airfreight waiting to be inspected at Sacramento International Airport.

## **Canine Detection Program - If it fits – It ships!**

In February 2013 the Sacramento County Ag Detector Dog team, consisting of Dozer and his handler Jennifer Berger, started ag parcel inspections at the West Sacramento Mail Distribution Center in Yolo County. While Dozer and Jennifer worked to identify unmarked mail shipments, Yolo County Ag Inspectors held the packages, made contact with the shippers or receivers and physically inspected each package that was held. As part of ongoing efforts to exclude non-native or harmful pests from our state, the Sacramento County dog team and Yolo inspectors intercepted a substantial amount of significant pests on unmarked packages containing plant material. These shipments were destined for many northern counties besides Sacramento including San Joaquin, Placer, Yolo, Shasta, Stanislaus, Siskiyou, Nevada, Butte and Sutter.

Some of the important interceptions include:

Citrus Canker on lemons, Asian Citrus Psyllid on curry leaves, Citrus Greening disease on citrus leaves, Papaya fruit fly on papaya as well as exotic snails, scales and mealybugs on a variety of plant material. It is expected that Dozer and Jennifer will increase their inspection time at the post office in 2014.



## **NO Japanese Beetles found in Fair Oaks in 2013!!!!!!**

In 2013 over 700 Japanese beetle traps were redeployed over 49 square miles in the infested area of Fair Oaks and checked throughout the summer by California Department of Food and Agriculture employees. No Japanese beetles were found. In fact 2013 marks the first summer since 2010 that no Japanese beetles were detected in Fair Oaks. In order to declare the beetle eradicated, 2 more years of negative trap catches will be necessary.

This deployment of traps was in response to Japanese Beetles found in the area in 2010, 2011 and 2012. These previous finds caused CDFA to issue a Proclamation of an Emergency Program in 2011. The “flight window” for the adult beetle is roughly June through August depending on temperature. This is the period of time that adult beetles emerge from the ground and take flight to feed and mate.

Japanese beetle is not native to California and there is zero tolerance for its detection. Japanese beetle was first discovered in the United States in 1916 in New Jersey. It has since spread to most states east of the Mississippi and some isolated infestations farther west. Japanese beetle larva feed on grass roots - damaging lawns, golf courses, pastures and natural areas. The mature beetle feeds on foliage, fruit and flowers of over 300 species of plants. The United States Department of Agriculture regulates interstate movement of all plant material and soil which may harbor Japanese beetle. Establishment of Japanese beetle in Sacramento would cause homeowners to use more pesticides in combating this pest of fruits, turf and roses and would impede the movement of ag commodities from Sacramento County. All plant movement from Sacramento County (private as well as commercial) would be prohibited unless certified as free from Japanese beetle or treated for Japanese beetle prior to shipping.

Sacramento County is the only area in California which is currently known to have a population of Japanese beetle. States which are already recognized by the USDA as having established populations of Japanese beetle are:

Alabama, Arkansas, Colorado, Connecticut, Delaware, Georgia, Illinois, Indiana, Iowa, Kansas, Kentucky, Maine, Maryland, Massachusetts, Michigan, Minnesota, Mississippi, Missouri, Nebraska, New Hampshire, New Jersey, New York, North Carolina, Ohio, Oklahoma, Pennsylvania, Rhode Island, South Carolina, South Dakota, Tennessee, Texas, Vermont, Virginia, West Virginia, Wisconsin, and the District of Columbia.

Plant movement from these states is restricted to other states.

## SACRAMENTO COUNTY CERTIFIED FARMER'S MARKETS - 2014 Schedule

### MONDAY

Kaiser Permanente - Pointe West 1650 Response Rd, Sacramento 9:30 am to 1:30 pm / Feb - Dec

### TUESDAY

Fremont Park 16th & P Street, Sacramento 10 am to 1:30 pm / May - September

Roosevelt Park 9th and P Street, Sacramento 10 am to 1:30 pm / May - September

### WEDNESDAY

Chavez Plaza 10th & J Streets (Front of City Hall) 10 am to 1:30 pm / May - October

Fair Oaks Sunset Farmers Mkt 8101 Sunset Ave, Fair Oaks 3 pm to 7 pm / Year round

VA Mather Farmers Mkt 10535 Hospital Way, Mather 9 am to 1 pm / June - November

### THURSDAY

Florin Sears Florin Rd & 65th Street (Front-Sears) 8 am to Noon / Year round

Capital Mall CFM Between 6th St & Capital Mall, Sac 10 am to 1:30 pm / May - September

East End Capital Park 15th & L Street, Sacramento 10 am to 1:30 pm / May - September

Mack Road Valley Hi Farmers Mkt 7833 Center Parkway, Sacramento 4 pm to 8 pm / June - September

UC Davis Medical Market 45th & X Street, Sacramento 3 pm to 7:30 pm / Year round

Orangevale Farmers Market 9295 Greenback Ln, Orangevale 3 pm to 8 pm / May - November

### Every Other THURSDAY

ASI - Sac State Farmers Mkt State University Way, Sacramento 10 am to 2 pm / Year round

### FRIDAY

Kaiser Permanente - Morse Ave 2025 Morse Avenue, Sacramento 9:30 am to 1:30 pm / April - November

### SATURDAY

County Club Plaza Watt & El Camino (Butano Dr Parking Lot) 8 am to Noon / Year round

Oak Park Farmers Mkt 3500 35th Street (35th & 5th Ave) 9 am to 1 pm / May - October

Be Money Smart USA FM 6196 Sunrise Mall, Citrus Heights 8 am to 1 pm / Year round

East Sacramento Farmers Mkt 35th St & Park Way, Sacramento 8 am to 1 pm / Year round

Laguna Gateway Laguna & Big Horn, Elk Grove 8 am to Noon / Year round

Midtown Farmers Market 2020 J Street, Sacramento 8 am to 1 pm / Year round

Sac Unity Farmers Market 9249 Folsom Blvd, Sacramento 8 am to 1 pm / Year round

Sunrise Light Rail Station Folsom & Sunrise Blvd (light Rail Pking Lot) 8 am to Noon / Year round

Natomas Promenade 3637 N Freeway Blvd (Promenade Shopping Ctr) 8 am to Noon / May - October

### SUNDAY

Central - Sunday 8th & W Streets - State Parking Lot 8 am to Noon / Year round

For Certified Farmer's Markets throughout the state visit: [California Certified Farmers' Markets](http://California Certified Farmers' Markets)

Background photo by: Laura McCready, Sr Ag & Standards Inspector



## PERSONNEL - Sacramento Office

Juli D Jensen, Agricultural Commissioner /  
Director of Weights & Measures  
Diana Acosta, Deputy Agricultural Commissioner  
Jackson McCarty, Deputy Agricultural Commissioner  
Ramona Saunders, Deputy Agricultural Commissioner  
Vicki Brewer, IT Analyst

### ADMINISTRATIVE SERVICES

Teresa Adams - Administrative Services Officer  
Patty Kirtley - Sr Account Clerk Conf.  
Priscilla West - Sr Office Assistant

### INSPECTORS

Lisa Arbogast	Laura McCreedy	Gerry Zepeda
Christina Evans	Vince Nyvall	
Dori Kelsey	Gafar Omar	<u>Sr Ag &amp; Stds Insp Aide</u>
Randon Krieg	Jason Sanguinetti	Adrian Ramos
Parminder Malhi	Lisa Rutherford	

CANINE HANDLER / INSPECTOR : Jennifer Berger

CANINE INSPECTOR : Dozer

## SATELLITE OFFICES

Galt Office -  
Deborah Thompson, Deputy Agricultural Commissioner

INSPECTORS  
Walnut Grove Office - Karen Vietheer  
Danny Sarracino

## CONTACT INFORMATION

<b>Sacramento Office</b>	4137 Branch Center Rd. Sacramento CA, 95827-3897 Office Hours: 8 am - 4 pm Closed from Noon - 1 pm	Phone: (916) 875-6603 Fax: (916) 875-6150 E-Mail: <a href="mailto:AGCOMM@saccounty.net">AGCOMM@saccounty.net</a>
--------------------------	-------------------------------------------------------------------------------------------------------------	------------------------------------------------------------------------------------------------------------------------

<b>Galt Office</b>	520 N Lincoln Way, Suite 3 Galt, CA 95632 Office Hours: call for appointment	Phone: (209) 745-4109 Fax: (209) 745-1128
--------------------	------------------------------------------------------------------------------------	----------------------------------------------

<b>Walnut Grove Office</b>	14177 Market Street Walnut Grove, CA 95690 Office Hours: call for appointment	Phone: (916) 776-1400 Fax: (916) 776-1394
----------------------------	-------------------------------------------------------------------------------------	----------------------------------------------

**Web Address** [www.AgComm.saccounty.net](http://www.AgComm.saccounty.net)

## BOARD OF SUPERVISORS

Phil Serna	District 1
Jimmie Yee	District 2
Susan Peters	District 3
Roberta MacGlashan	District 4
Don Nottoli	District 5