

ANNUAL LEGUME STRAIN ADAPTATION TRIALS 1963-64

County Kings Precipitation before seeding 2" - small showers
 Cooperator Joe Orchard Previous crop Range
 Location Sunflower Valley Seedbed preparation Raked in
 Soil Sandy Loam Elevation 500'
 Date seeded Nov 19, 1964 Exposure Flat land
 Notes by: Etchegaraya Stiles

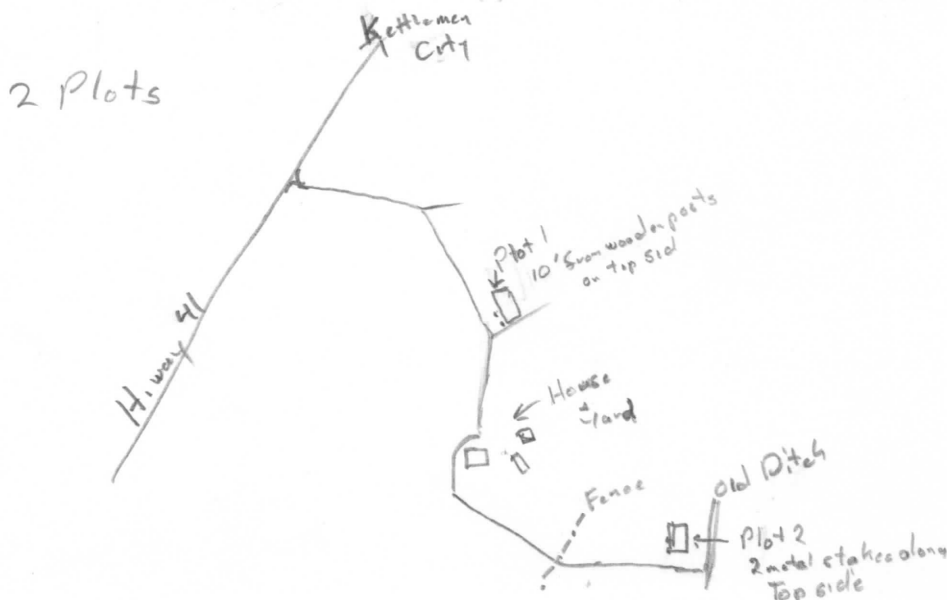
Pick a uniform piece of ground. Beware of wet spots. Fence corners are bad for concentrated livestock trampling.

Make sure phosphorus and sulfur are adequately supplied. One 80 pound sack of single superphosphate on 70 feet by 100 feet is a 500 pounds per acre rate of single super and should do the job. Single super worked into the seedbed is preferred.

Each envelope seeds a four foot by four foot square. Dust a little appropriate inoculum in the envelope and shake well before seeding.

Rake or harrow lightly after seeding.

Correct enclosed plot plan to include your notes and innovations and send a copy to Jim Street or Vic Osterli.



RANGE LEGUME ADAPTATION TRIALS. 1963-64

- S1 Tallarook
- S2 Mt. Barker
- S3 Bacchus Marsh
- S4 Woogenellup
- S5 Clara
- S6 Varioop
- S7 Dwaiganup
- S8 Geraldton
- S10 Dinninup
Rose Clover

- R1 Certified
- R2 P. I. 170821
- R3 Kondinin
- R4 Cyprus
- R5 Spain

Crimson Clover

- C1 Dixie
- C2 Chief

Plot Size : 4 feet x 4 feet
 Replications : 3
 Seed per plot : 8 grams
 Seeding rate : 50 lbs./acre
 Fertilizer : 500 lbs./acre singlesuperphosph

Medicago

- M1 Bur clover
- M2 Black medic
- M3 Barrel medic
- M4 Button burclover

Woollypod Vetch

- W1 Lena
- W2 Auburn

Miscellaneous

- H1 Hairy canary clover

	S1	S2	S3	S4	S5	S6	S7	S8	S10	R1	R2	R3
0		H1	W2	W1	M4	M3	M2	M1	C2	C1	R5	R4
	S6	S10	S2	S4	S5	S3	S1	S8	S7	R5	R1	R4
11	H1	W1	M2		C2	C1	M1	M2	M3	M4	R2	R3
	M4	M2	M3	M1	C1	C2		R2	R3	R4	R5	R1
011	W1	W2	H1	S6	S2	S8	S1	S5	S7	S4	S10	S3

4' 4' 4'

ANNUAL LEGUME STRAIN ADAPTATION TRIALS -- PLOT READING

County Kings
 Cooperator Orchard Ranch
 Location Sunflower Valley

Date Planted Fall 1964
 Date Read March 25 1966
 Notes by H. Etchegaray

VARIETY	STAND	VIGOR	COMMENTS
S1 Tallarook	?		
S2 Mt. Barker	0		
S3 Bacchus Marsh	0		
S4 Woodenellop	0		
S5 Clare	0		
S6 Yerloop	0		
S7 Dwaiganup	0		
S8 Geraldton	0		
S9 Carnamah	0		
S10 Dinningup	0		
R1 Certified	0		
R2 P.I. 170821	2		No spring rains, little chance of anything going to seed Possibility of hardseed in ground
R3 Kondinin	4		
R4 Cyprus	3		
R5 Spain	3		
R6 Hykon	1		Visited by Stiles + Etchegaray on April 15. Everything appeared to be drying up without going to seed
R7 Troodos Th 59a	2		
R8 Troodos Th 59c	2		
R9 C.P.I. 29089	2		
R10 Srint	2		
R11 Th 52	0		
R12 S6	0		
A1 Beenong, Cup Cl.	0		
A2 Yamina, Cup Cl.	0		
W1 Lang			
W2 Auburn	0		
M1 Bur Clover	0		
M2 Black Medic	0		
M3 Barrel Medic Var. 173	1		
M4 Button Burclover	0		
M5 Cyprus Barrel Medic	1		
M6 Harbinger Barrel Medic	?		
C1 Dixie	0		
C2 Crimson	0		
H1 Hairy Canary Clover			

STAND AND VIGOR RATINGS: 1 = Poor 2 = Fair 3 = Good 4 = Excellent