

Livestock Drought Feeding Strategies

Glenn Nader, UCCE Farm Advisor
Yuba/Sutter/Butte Counties

Key Drought Experiences

- Vitamin A Deficiencies
- Test forage for protein and ADF
- Balance ration for Energy and Protein

Canola meal



Canola Meal vs Other Common Byproduct Feeds (% of DM)

Feed	TDN	CP	ADF
Canola Meal	75	36-39	19
Rice Bran	76	14	18
Almond Hulls	59-48	2-4.4	20 - 36

Rice Bran

- Brown to white rice- polished
- CP 14%
- TDN 76%
- Fat 13%
- Phos 1.67%
- \$72-80/ton
- More than 20% - fiber digestion
- Rancid in warm weather

Supplementation with Salt

- Salt to control intake
- 50% to start
- Salt increases water consumption

Almond Hulls

- Depends on what is sent – shell, trigs and CF

Crude Fiber	10	30	+shell
-------------	----	----	--------

- TDN 59 51 48

- CP 2.7 – 4.4

Shells with Hulls

Hulls



Shell



Comparison

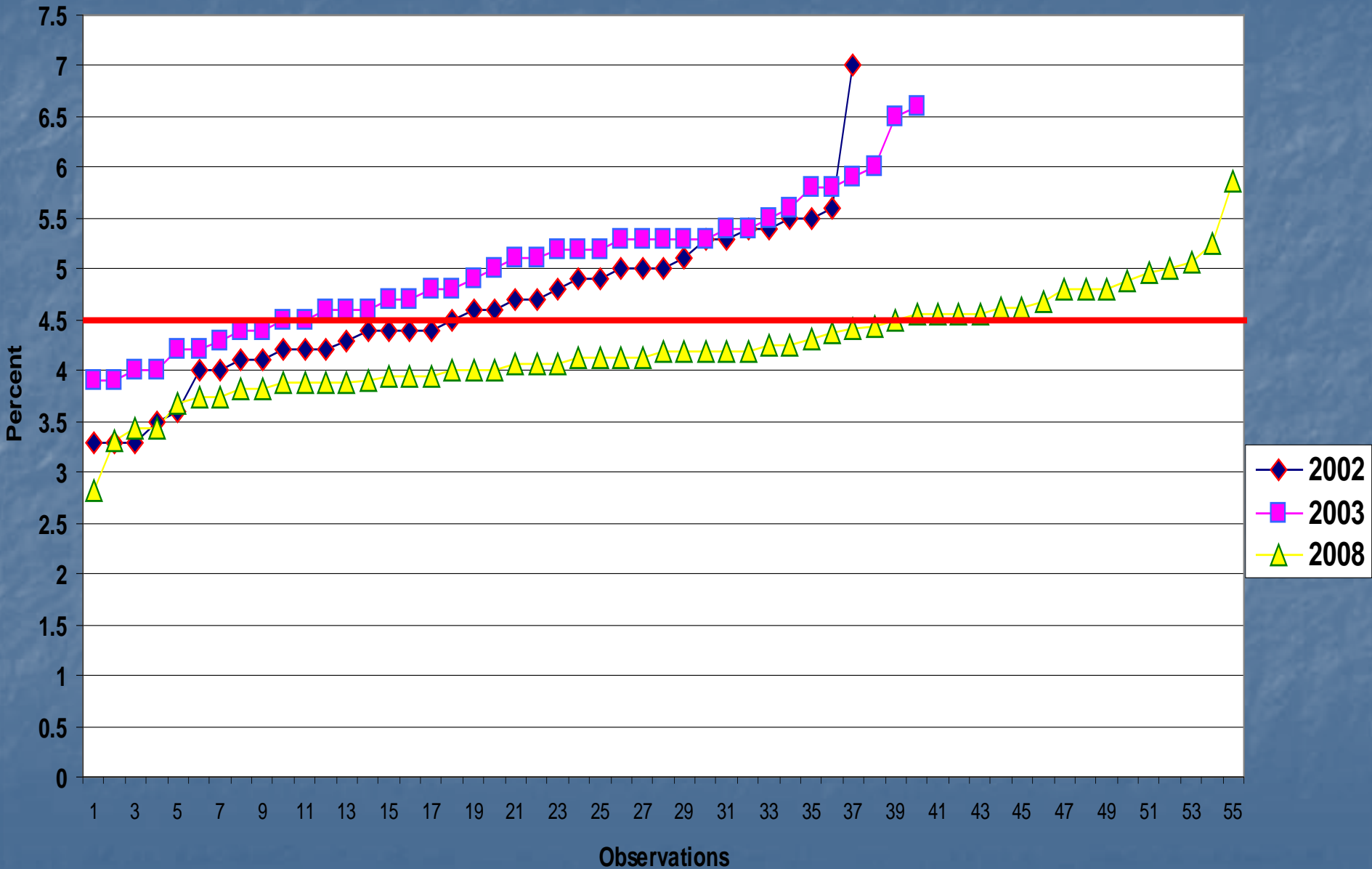
	<u>Crude Protein</u>	<u>ADF</u>	<u>Ash</u>
Corn Stover	5.9	46	5.8
Rice Straw	4.5	48	16.6
Lima Bean Straw	7.6	39	9.3
Wheat Straw	3.6	52	7.2
Kidney Bean Str	9.9	43	10.4

Source - By-Products and Unusual Feedstuffs in Livestock Rations Western Regional Extension Publication, No. 39

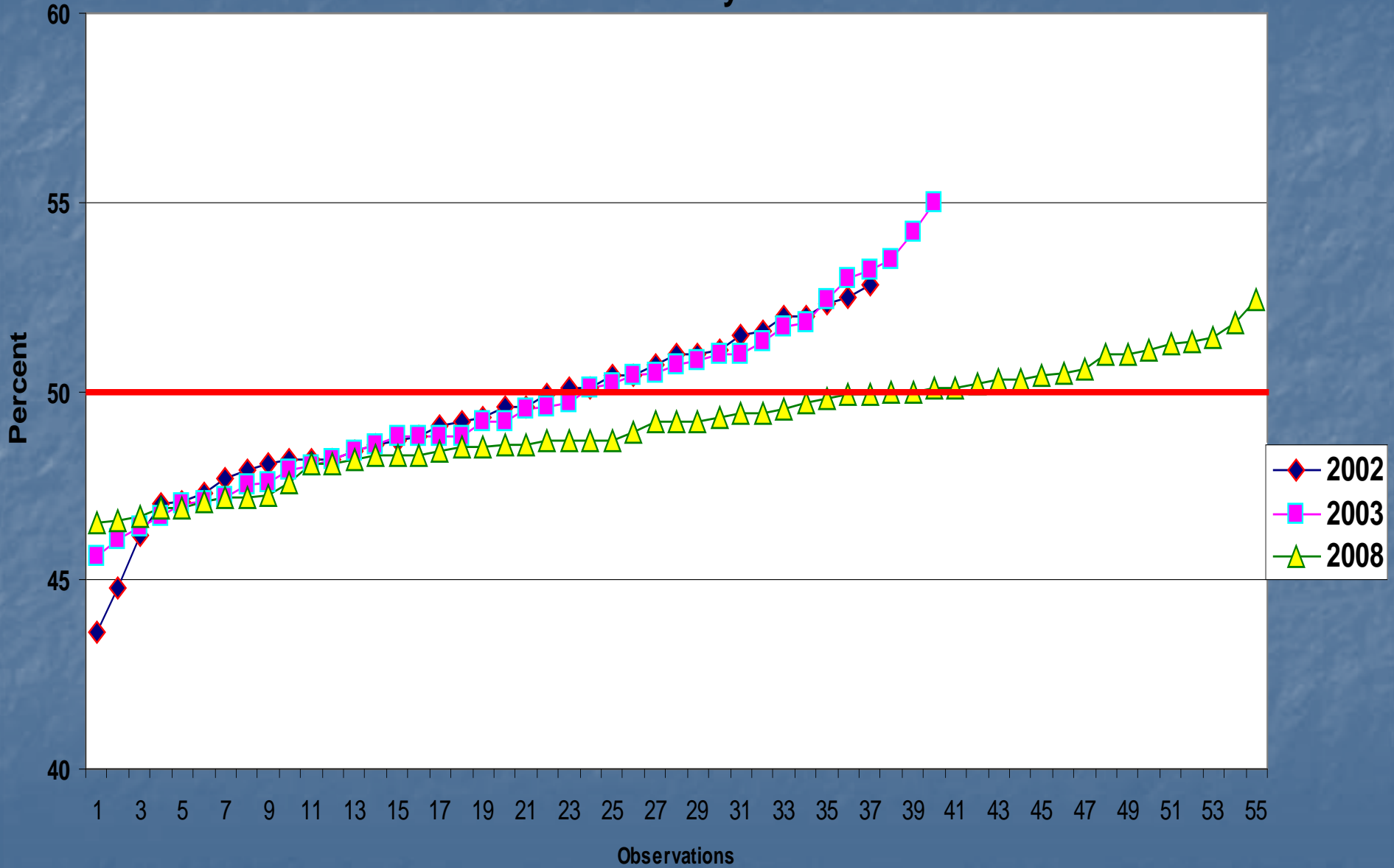
Rice Straw

- Lab testing
- Minimum criteria
 - ADF – 50 or lower
 - CP 4.5 or higher
 - Only **31.4** percent of samples met these guidelines
- <http://www.ricestrawmarket.org/>

Crude Protein of Rice Straw for three years



ADF of Rice Straw for three years



Different Rice Straws



CropSaver (8 lbs/ton)

Tank

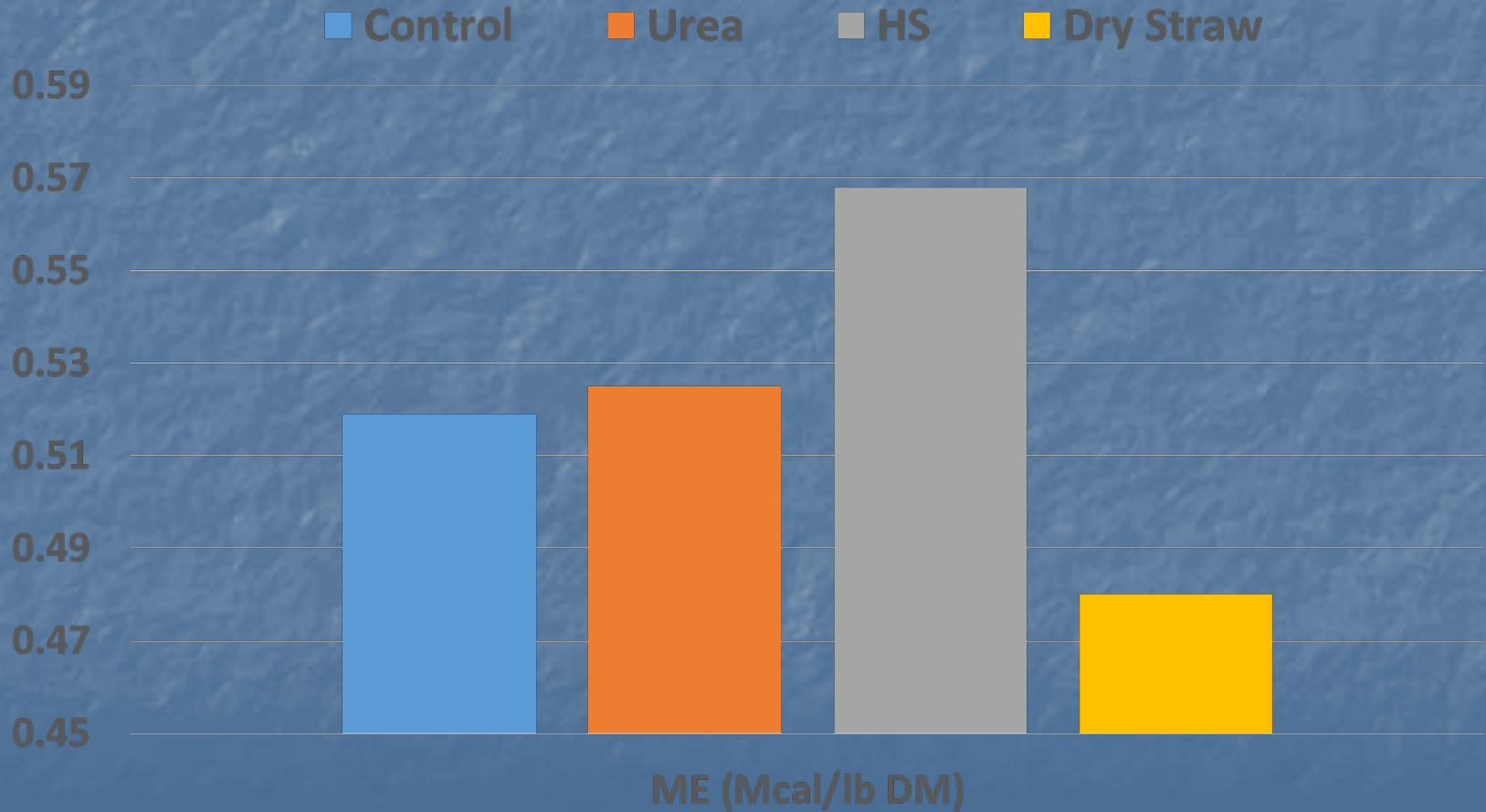


Pick up spray nozzles



At the 8.4 pound application rate per ton = \$11.65/ton.

Impacts on Estimated Metabolizable Energy







Beef Cattle Eating Ensiled Rice Straw



Impacts of Haylage or Strawlage

- Heat treatment (120 to 130 degrees)
- Prevent drying

Wapper



Bale Wrapper



Tarped Sudan Stacks



Keys to Success

- Mold control
 - Propionic acid
 - Enzymes



THE UNIVERSITY OF CALIFORNIA

LET THERE BE LIGHT

1868