

# New Partnership Success

A scenic landscape of rolling hills with golden grass and a herd of cattle grazing on a hillside under a clear blue sky. The hills are covered in dry, golden-brown grass, and the sky is a clear, bright blue. In the foreground, a herd of brown and black cattle is grazing on a hillside. The background shows more rolling hills and a large mountain range under a clear sky.

**George Phillips**

*Land Conservation Manager*

**Carissa Koopmann Rivers**

*Rancher*

# Save Mount Diablo



Preserve - Defend - Restore - Enjoy



# Challenges as a Land Manager

- Staff resources
- Operating funds
- Managing volunteers
- Future ownership
- Landowner / neighbor relations
- Trespassing and vandalism
- Understanding ranching



# Challenges as a young rancher

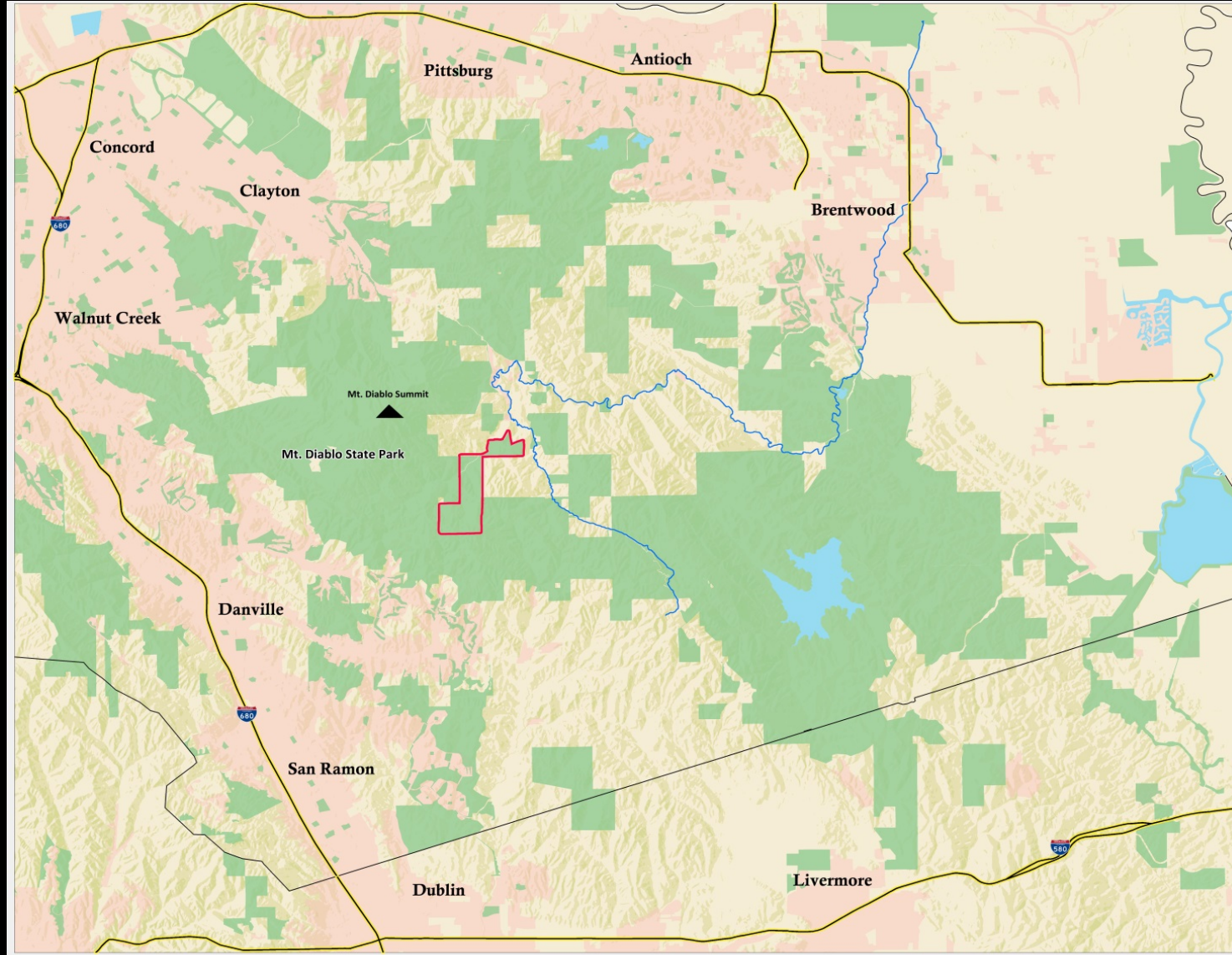


- Finding available land
- Competing with larger operations economically
- Land available to us generally has water, noxious weed and infrastructure concerns

- We have full time jobs plus trying to follow our passion and keep the hope of our family operations afloat for us and with any luck, the next generation



# Curry Canyon Ranch



# Implementing the Program



- **Selecting a tenant**
- **Rent credits**
- **Two year lease**
- **Year round**



# Opportunities

## Rent credits:

- Motivation to make improvements

## Working with the younger generation

- Motivation to work hard to stay in the game and keep the family in ranching
- Raised in this time of learning that working with land managers is the most productive way to accomplish goals

## Good relationship between landowner and rancher:

- Motivation to work together on common goals/projects

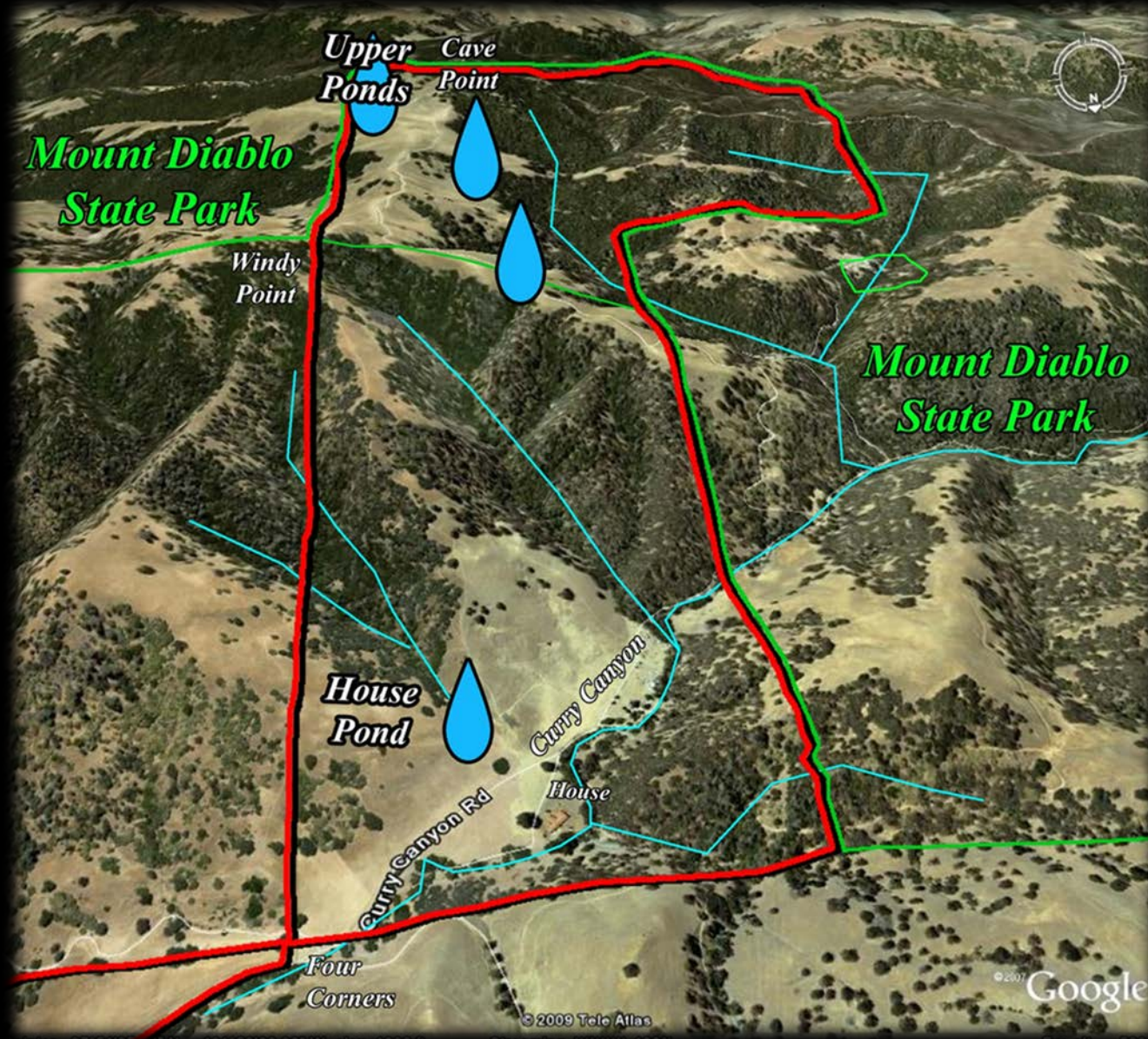


# Grazing Strategies



- Utilize cattle as a management tool to:
  - Reduce fuel load
  - Increase plant and wildlife diversity
  - Maintain healthy riparian areas
  - Help educate the public

# Curry Canyon Ranch



# Land Managers Challenges at CCR

- Security
- Fencing
- Neighbor Relations
- Water
- Invasive species



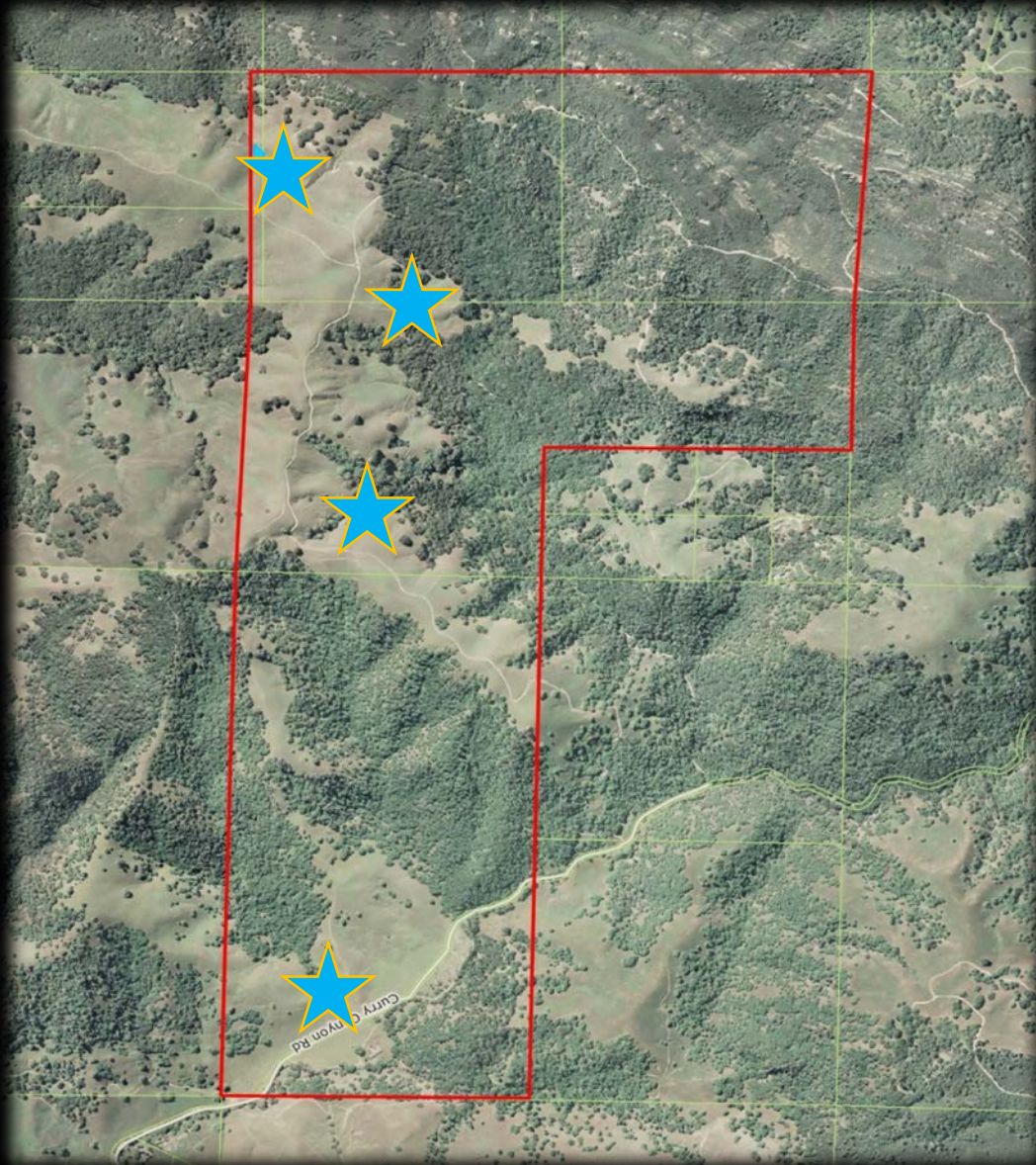
# Ranchers Challenges at CCR

- Water availability
- Fence
- Difficult Neighbor
- Invasive species
  - Feral pigs
  - Purple star thistle
- Public trespass





# Working Together



- Spring Restoration
- Pond Cleanout
- Boundary Fencing
- NRCS Projects
  - Cross Fence
  - Solar Pump

# Biggest Concerns



- **Length of lease**
- **Fate of ranch**
- **New land manager**



# Communication/Transparency



## Talk about:

- Needs  
(physical/economical)
- Goals
- The future
- Concerns
- Ideas
- Everything

**You do not have to agree on everything, but work to understand each other... listen**

# Take Home

- Give the younger generation a chance, think about us when you create your RFP- we have a lot to offer
- Communication between lessee and landowner is key
- Determine common goals, develop a management plan with those in mind
- Create a long term partnership

# Questions?

**George Phillips**

*Save Mount Diablo Land Manager*

[gphillips@savemountdiablo.org](mailto:gphillips@savemountdiablo.org)

**Carissa Koopmann Rivers**

[RiversRedAngus@yahoo.com](mailto:RiversRedAngus@yahoo.com)