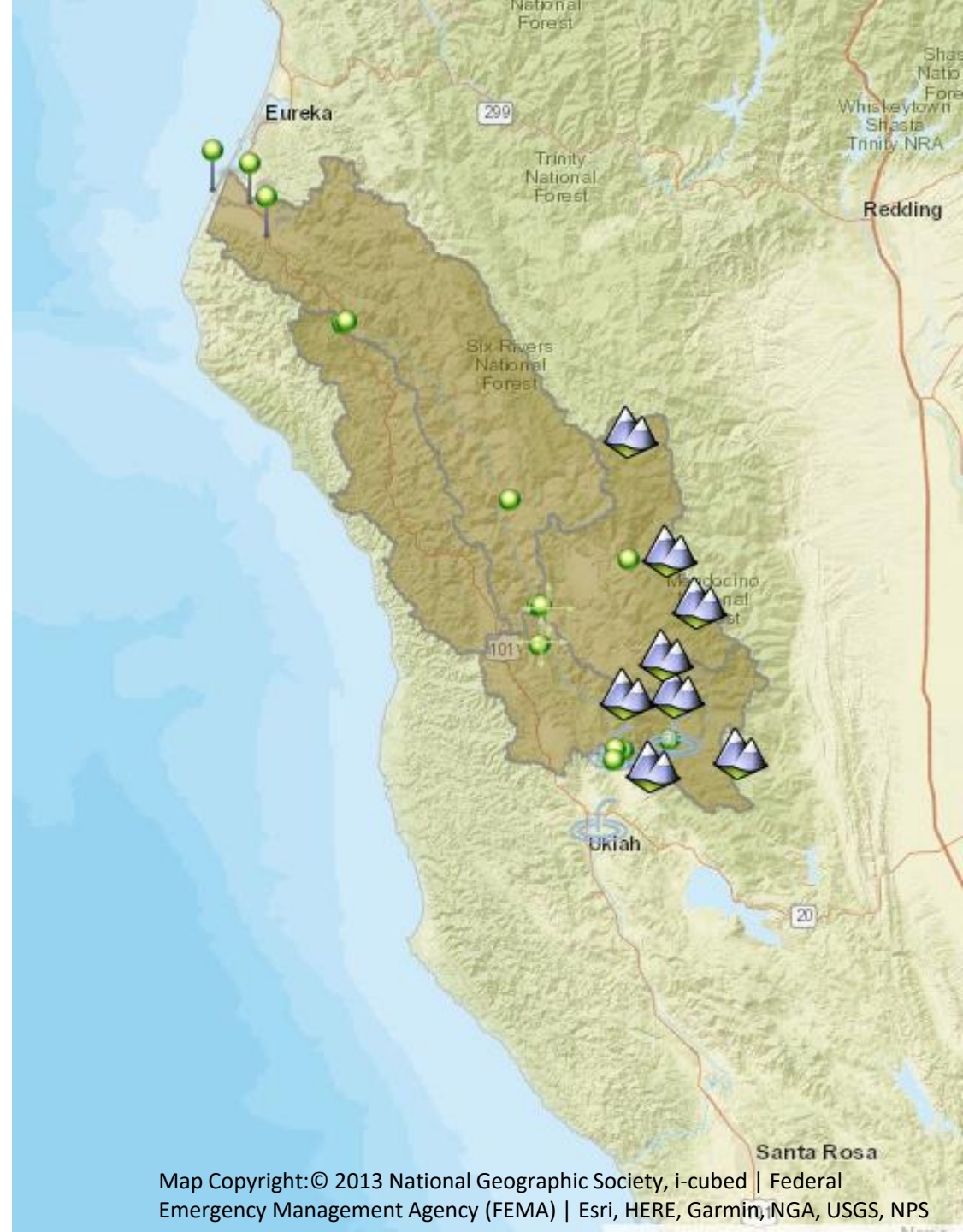


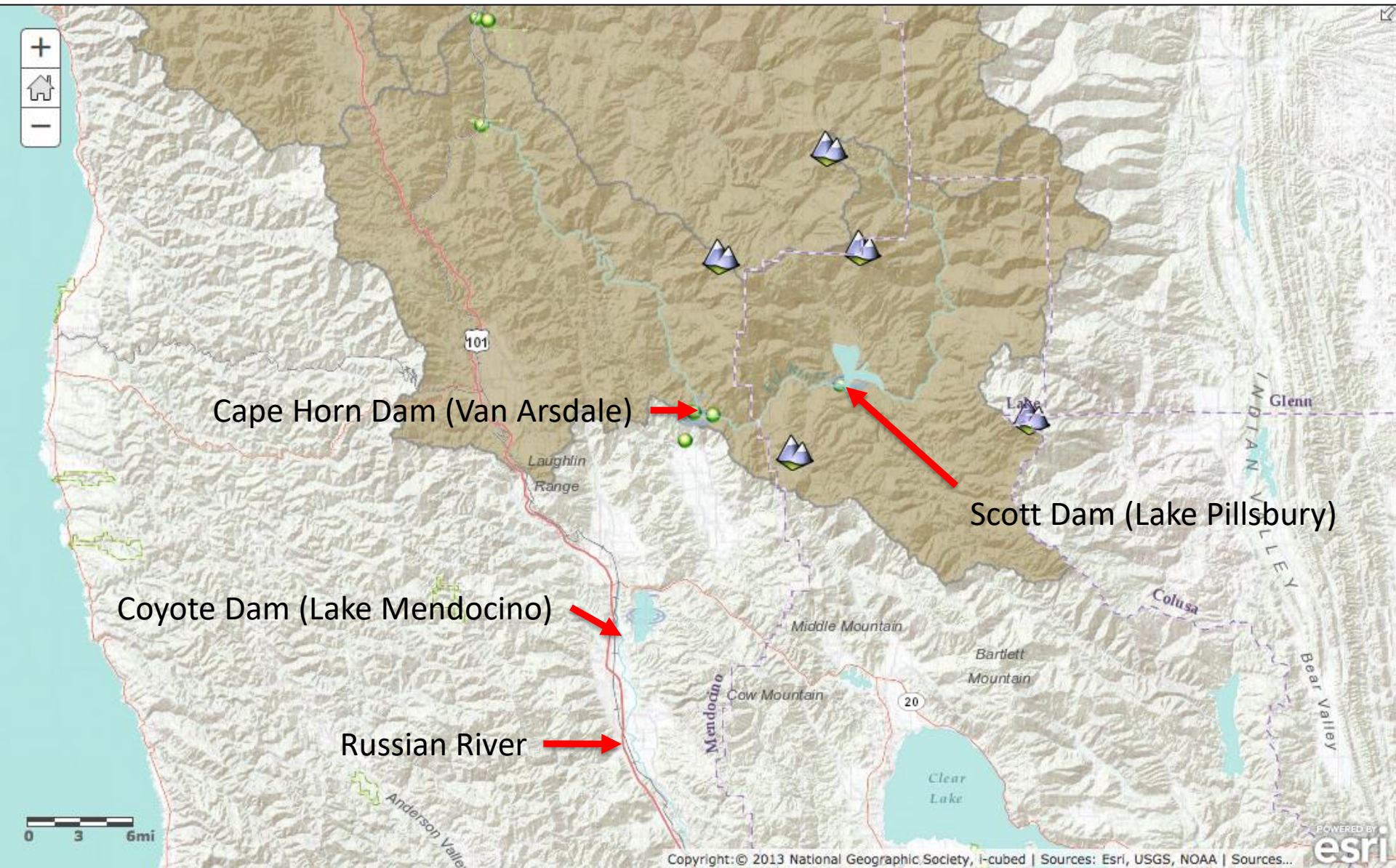
Eel River fish habitat.... and What's up with the Scott Dam Relicensing?

Jennifer Riddell

jenariddell@gmail.com



Southern part of the Eel River Watershed



Key points in the Eel River watershed and Potter Valley Project

Copyright:© 2013 National Geographic Society, i-cubed | Federal Emergency Management Agency (FEMA) | Esri, HERE, Garmin, NGA, USGS, NPS

**Cape Horn Dam – Built in 1908 for
hydroelectric power for Ukiah,
Potter Valley**





Anadromous Species

Steelhead (endangered)

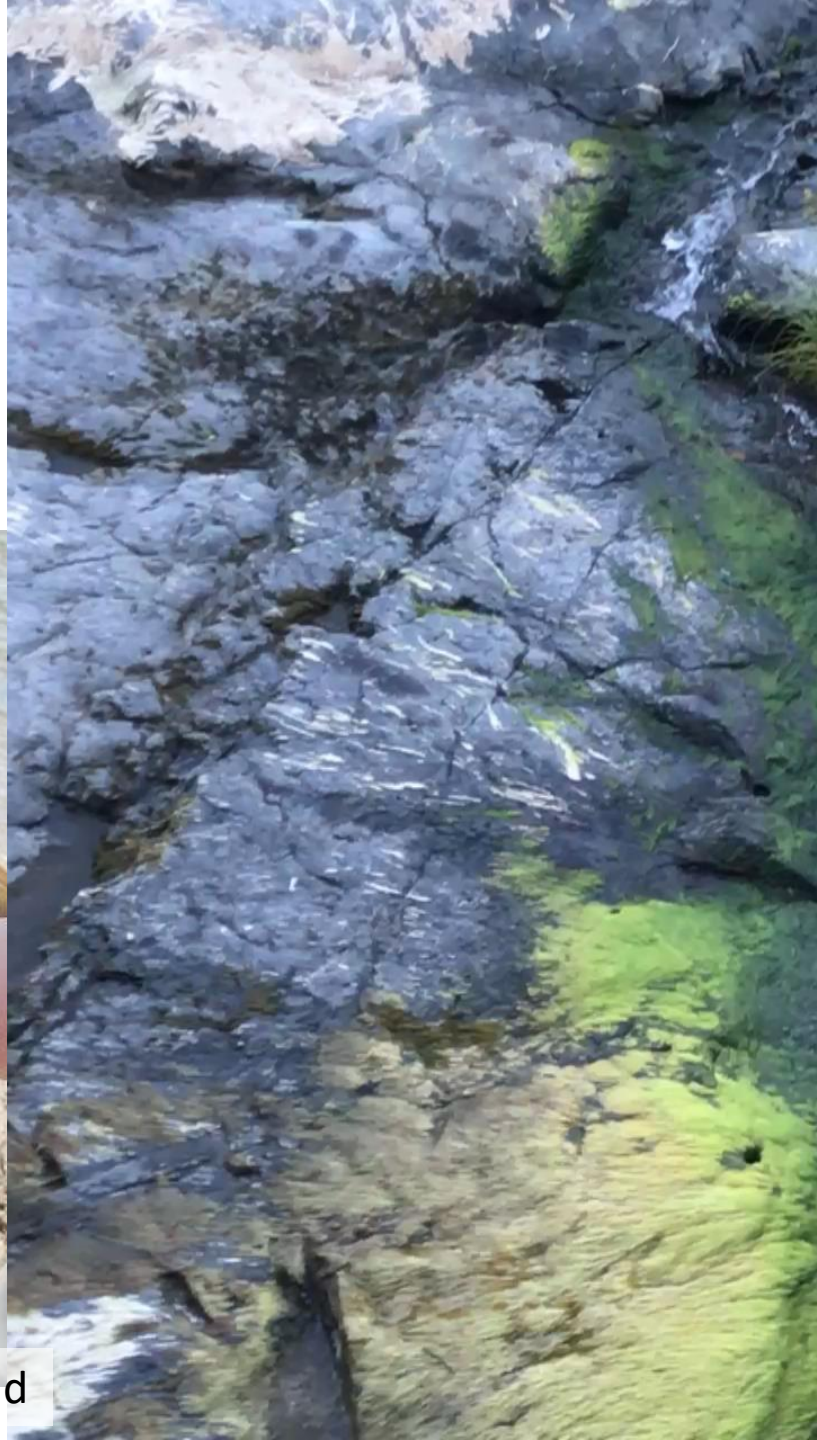
Chinook (endangered)

Pacific Lamprey ?

Pacific Lamprey Migration



Video: Scott Harris/Amanda Ekstrand



Some things fish care about:

- Water flow timing (up and downstream migration)
- Water quality
- Water temperature
- Stream bed characteristics
- Cover (rocks, logs, etc)
- Passage

1964 Flood



Photos from:

http://www.pottervalleywater.org/eel_river_1964_flood.html

Winter 2017 – Fish ladder closed for most of the steelhead migration (= reduced migratory access to Trout, Alder, Bucknell, Benmore, Soda Creeks, etc.)



Photo: <http://kymkemp.com/2017/05/05/major-snowmelt-prompts-pge-water-warnings/unnamed-46-3/>

Scott Dam, Lake Pillsbury – Built 1922 for water storage for Cape Horn Dam

1923 storage: 86,785 Acre Feet Today: ~ 70,000 Acre Feet



<http://www.nhcweb.com/projects/dams-spillways/scott-dam-pmf.asp>

2022 relicensing?

Upstream from dam:

~80 + miles of Chinook habitat

~140 miles of steelhead habitat

- Currently no fish passage at Scott Dam (12 miles upstream of Cape Horn Dam)