

Table 10a. *Grevillea* 'Kings Fire' average monthly quality ratings (scale 1-5, 5 = highest) at UC Davis on 3 ETo-based irrigation levels in 2019.

Category	ET <sub>o</sub> %	Apr	May	Jun	Jul	Aug	Sep	Oct	AVG
Overall Appearance	80	3.6	4.6	4.8	4.4	5.0	4.8	4.6	4.5
	50	3.8	4.3	4.8	4.3	4.8	4.9	4.8	4.5
	20	3.9	4.4	4.6	4.8	4.9	4.8	4.5	4.6
Foliage	80	4.3	4.9	4.7	4.7	4.9	4.4	3.9	4.5
	50	4.8	4.8	4.8	4.8	5.0	5.0	4.5	4.8
	20	4.5	4.6	4.9	4.9	4.9	4.5	3.8	4.6
Flower	80	1.1	1.6	4.9	2.4	4.7	4.1	4.1	3.3
	50	1.0	1.5	4.8	2.5	4.7	4.7	3.8	3.3
	20	0.8	1.8	5.0	3.4	4.9	4.9	4.4	3.6
Pest Resistance	80	5.0	5.0	5.0	5.0	5.0	5.0	5.0	5.0
	50	4.8	5.0	5.0	5.0	5.0	5.0	5.0	5.0
	20	5.0	5.0	5.0	5.0	5.0	5.0	5.0	5.0
Disease Resistance	80	5.0	5.0	5.0	5.0	5.0	5.0	5.0	5.0
	50	5.0	5.0	5.0	5.0	5.0	5.0	5.0	5.0
	20	5.0	5.0	5.0	5.0	5.0	5.0	5.0	5.0
Vigor	80	5.0	5.0	5.0	4.9	5.0	5.0	5.0	5.0
	50	4.8	4.7	5.0	5.0	5.0	5.0	5.0	4.9
	20	4.9	4.9	5.0	4.9	5.0	5.0	5.0	4.9

Table 10b. Open House participant ratings for *Grevillea* 'Kings Fire' on 3 ETo-based irrigation levels in April, July, and September 2019 at UC Davis.

	ET <sub>o</sub> %	Spring			Summer			Fall		
		80	50	20	80	50	20	80	50	20
Overall Appearance	Max	5	5	5	5	5	5	5	5	5
	Mean	4.0	4.0	4.0	3.8	4.0	4.2	4.3	4.4	4.6
	Median	4	4	4	4	4	4	4	5	5
	Min	2	2	2	2	2	0	2	3	3
Foliage Quality	Max	5	5	5	5	5	5	5	5	5
	Mean	4.3	4.4	4.6	4.5	4.5	4.8	4.4	4.5	4.9
	Median	4	5	5	5	5	5	5	5	5
	Min	2	1	2	3	2	3	2	3	3
Floral Display	Max	5	5	5	5	5	5	5	5	5
	Mean	2.9	1.8	1.9	3.0	3.1	3.1	4.0	4.0	4.0
	Median	3	2	2	3	3	3	4	4	4
	Min	0	0	0	0	1	1	0	2	2

Table 10c. *Grevillea* 'Kings Fire' average monthly quality ratings (scale 1-5, 5 = highest) at South Coast REC on 3 ETo-based irrigation levels in 2019.

Category	ET <sub>o</sub> %	Apr	May	Jun	Jul	Aug	Sep	Oct	AVG
Overall Appearance	80	1.8	1.8	1.8	2.0	1.7	1.7		1.8
	50	2.0	2.0	2.0	2.2	2.2	2.8	1.3	2.1
	20	1.7	2.0	2.5	2.5	2.5	2.5	1.0	2.1
Foliage	80	2.0	1.5	2.0	2.5	2.0	2.0		2.0
	50	2.0	2.0	2.0	2.2	2.2	2.8	1.3	2.1
	20	1.7	2.0	2.5	2.5	2.5	2.5	1.0	2.1
Flower	80	0.3	0.3	0.3	0.3	0.5	0.5	0.0	0.3
	50	0.3	0.3	0.3	0.5	0.3	1.0	0.7	0.5
	20	0.3	0.3	0.3	0.3	0.3	0.3	0.0	0.3
Pest Resistance	80	5.0	5.0	5.0	5.0	5.0	5.0		5.0
	50	5.0	5.0	5.0	5.0	5.0	5.0	5.0	5.0
	20	5.0	5.0	5.0	5.0	5.0	5.0	5.0	5.0
Disease Resistance	80	5.0	5.0	5.0	5.0	5.0	5.0		5.0
	50	5.0	5.0	5.0	5.0	5.0	5.0	5.0	5.0
	20	5.0	5.0	5.0	5.0	5.0	5.0	5.0	5.0
Vigor	80	2.0	1.8	2.3	3.0	2.0	2.0		2.2
	50	2.2	2.3	2.3	2.6	2.6	3.0	1.0	2.3
	20	2.0	2.5	3.0	3.0	3.0	2.5	1.0	2.4

Table 10d. Open House participant ratings for *Grevillea* 'Kings Fire' on 3 ETo-based irrigation levels in March, June, and September 2019 at South Coast REC.

	ET <sub>o</sub> %	Spring			Summer			Fall		
		80	50	20	80	50	20	80	50	20
Overall Appearance	Max	5	5	5	5	5	4	5	4	4
	Mean	2.3	2.7	3.1	2.4	3.3	2.8	1.3	2.4	2.3
	Median	2	2	3	2	3	3	1	2	2
	Min	1	1	1	1	2	2	1	1	1
Foliage Quality	Max	5	5	5	5	5	5	5	4	4
	Mean	2.3	2.9	3.2	2.4	3.4	3.3	1.3	2.5	2.4
	Median	2	3	3	2	4	4	1	2	2
	Min	1	1	1	1	2	2	1	1	1
Floral Display	Max	4	5	5	5	3	2	4	4	3
	Mean	1.3	0.1	1.1	1.6	0.2	0.9	0.9	1.6	1.3
	Median	1	0	1	1	0	1	1	1	1
	Min	0	0	0	1	0	0	0	0	0

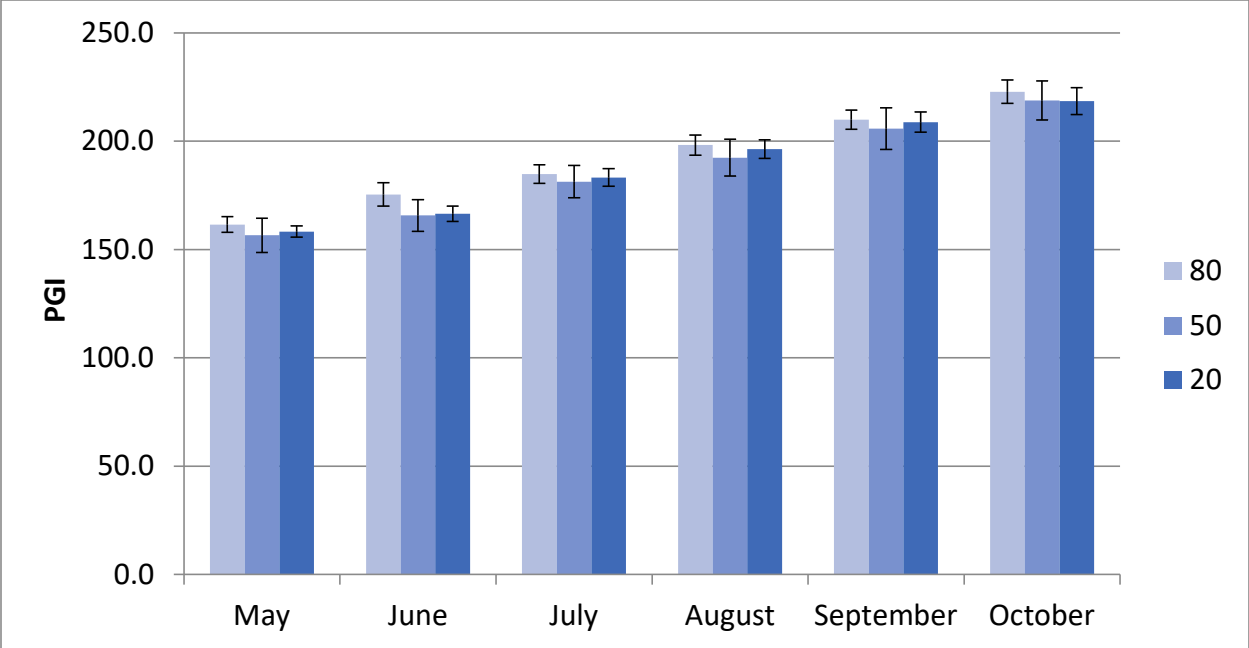


Figure 5a. *Grevillea* 'Kings Fire' average monthly plant growth index (PGI) at UC Davis on 3 ETo-based irrigation levels in 2019. Error bars represent  $\pm 1$  SE.

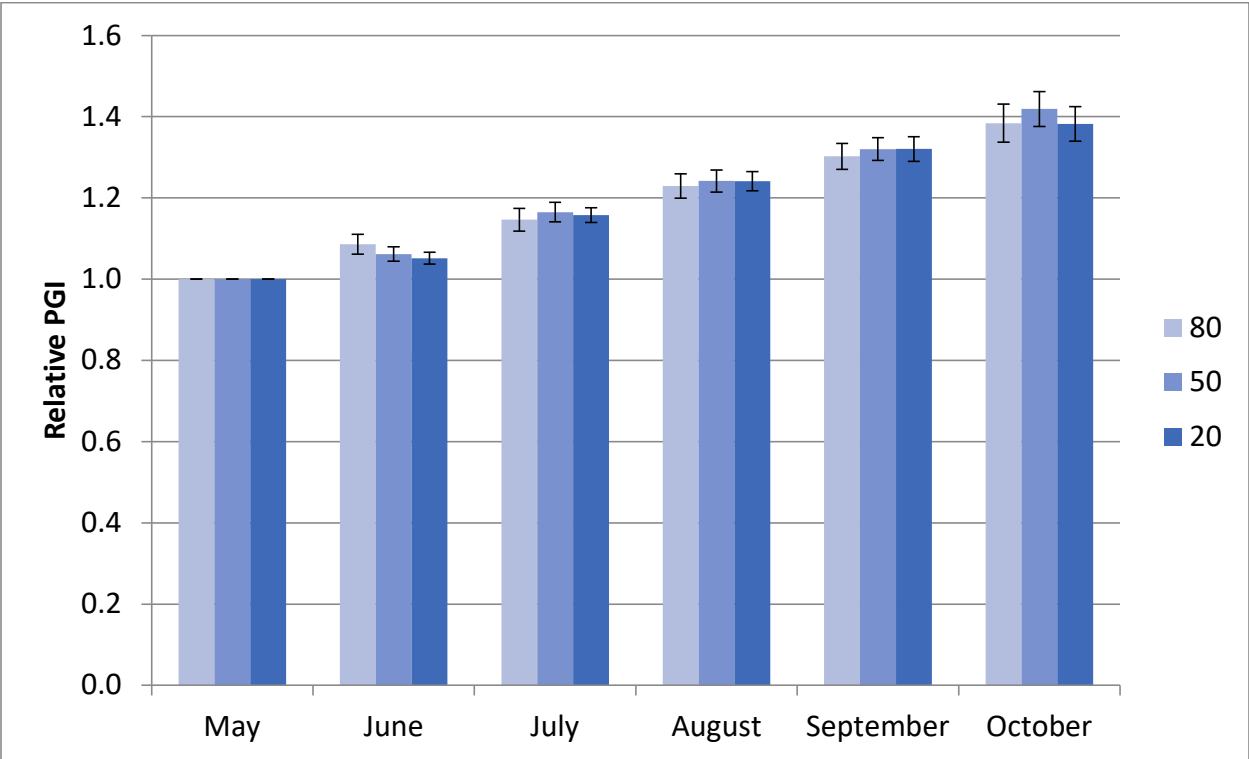


Figure 5b. *Grevillea* 'Kings Fire' average monthly relative plant growth index (rPGI) at UC Davis on 3-ETo based irrigation levels in 2019. Error bars represent  $\pm 1$  SE.

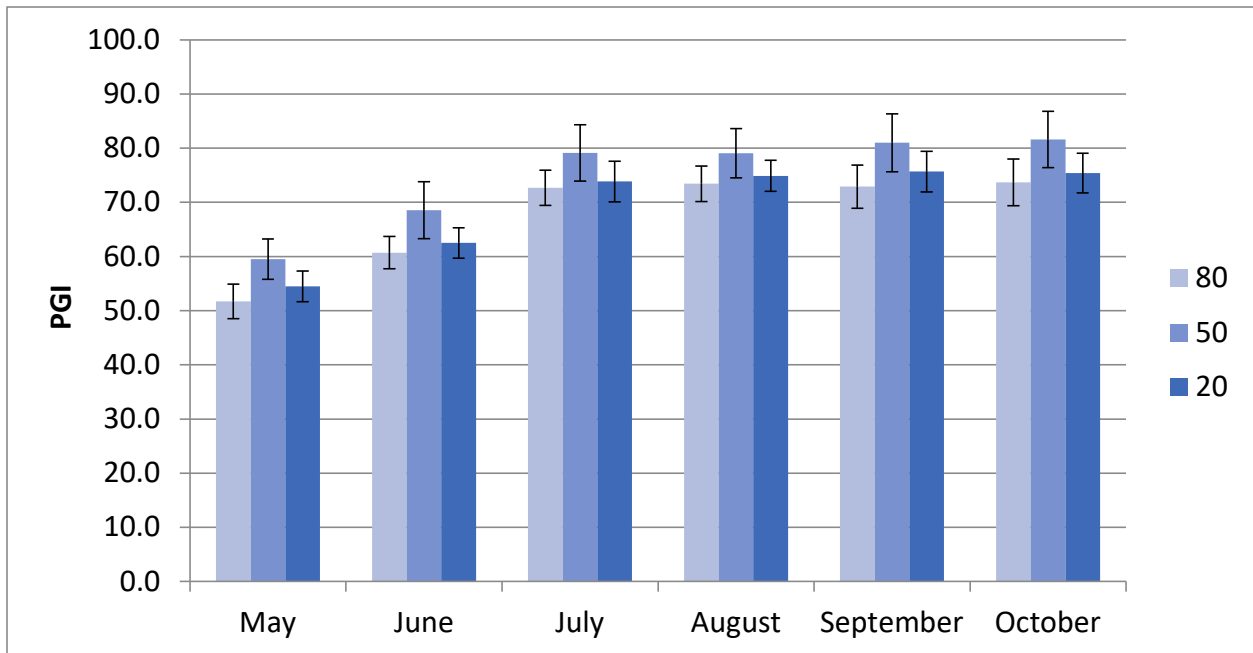


Figure 5c. *Grevillea* 'Kings Fire' average monthly plant growth index (PGI) at South Coast REC on 3-ETo based irrigation levels in 2019. Bars represent  $\pm 1$  SE.

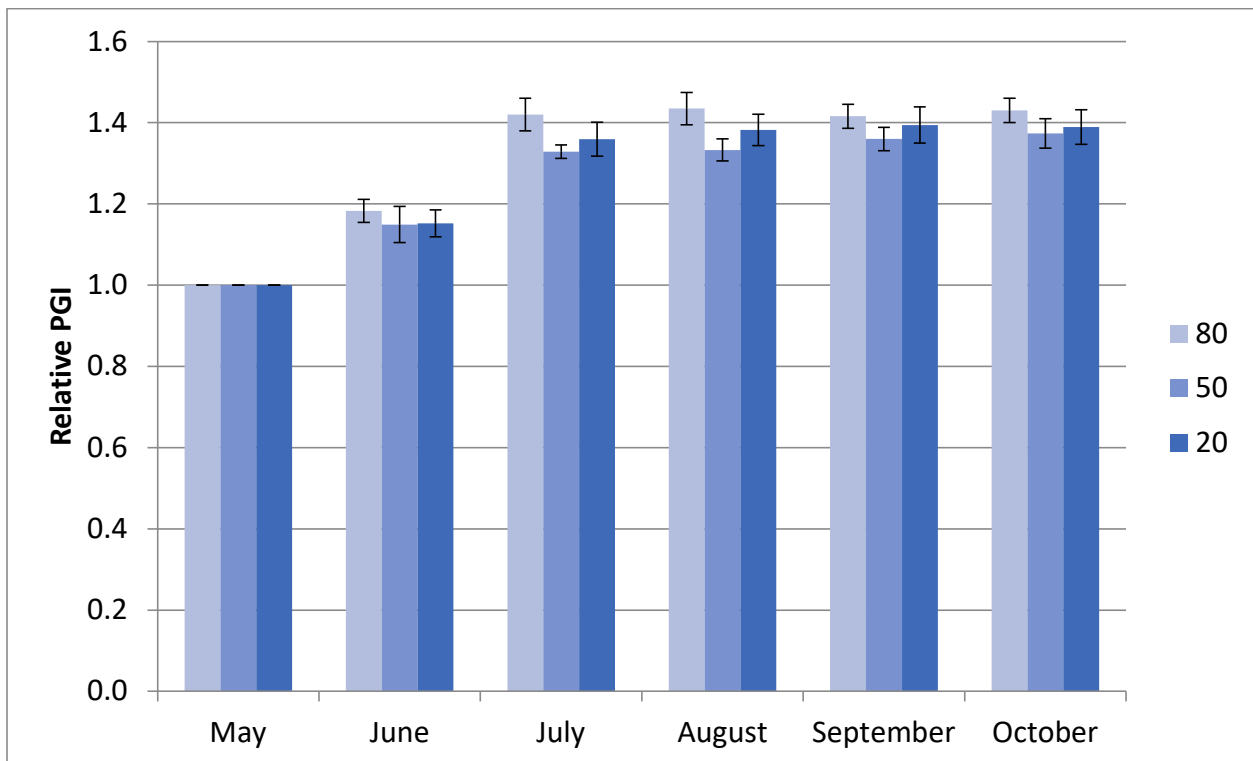


Figure 5d. *Grevillea* 'Kings Fire' average monthly relative plant growth index (rPGI) at South Coast REC on 3 ETo-based irrigation levels in 2019. Error bars represent  $\pm 1$  SE. Table 12a.