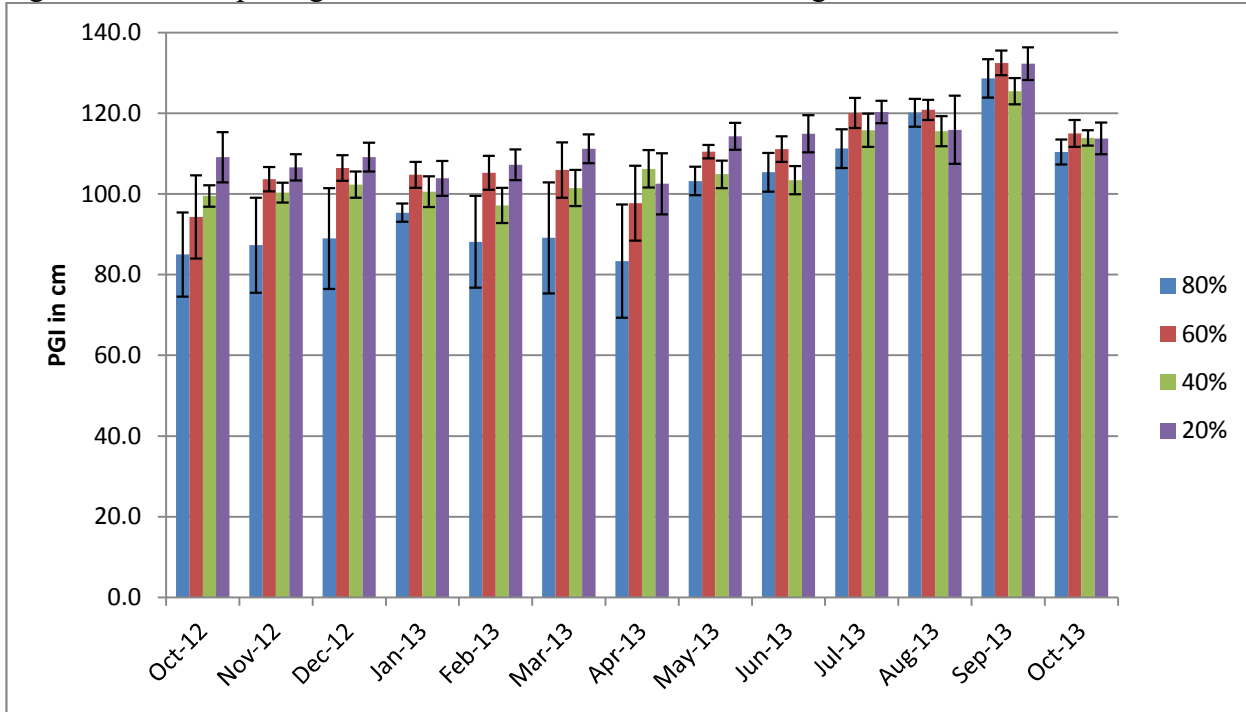


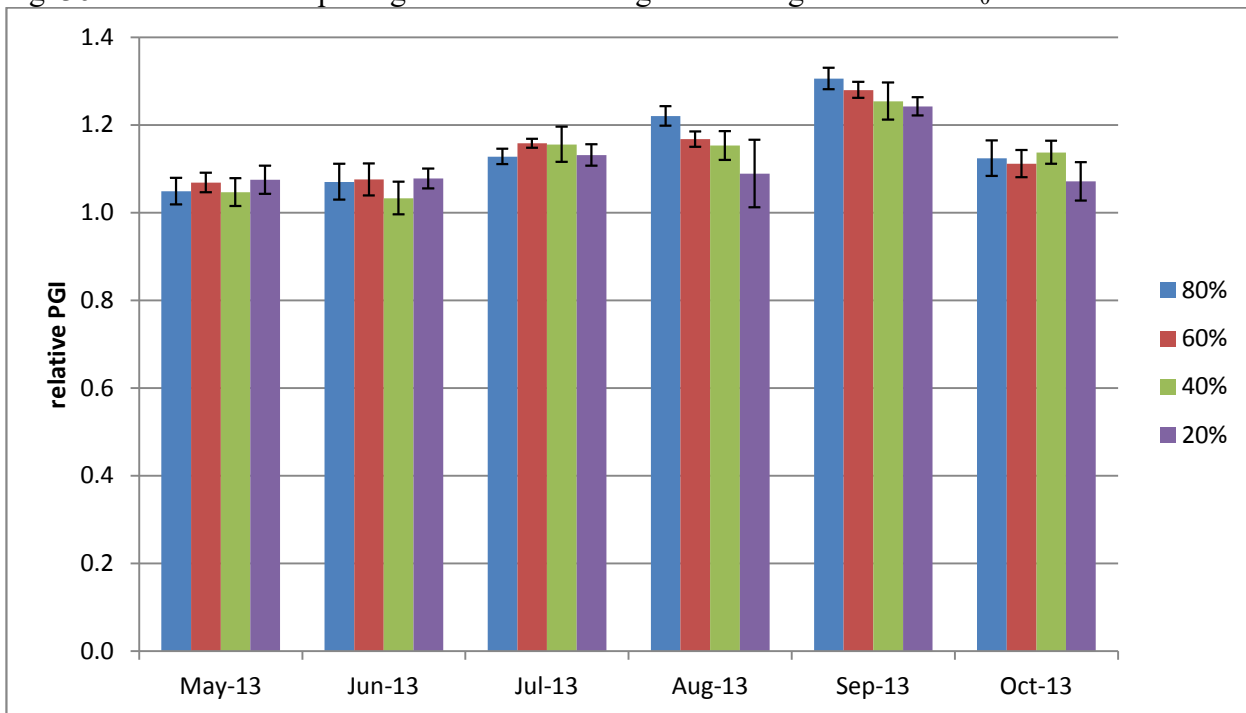
Neomarica caerulea

Figure 36a. Mean plant growth index in cm on 4 ET₀-based irrigation levels



Error bars represent \pm 1 SE

Fig. 36b . Mean relative plant growth index during deficit irrigation on 4 ET₀-based levels



Error bars represent \pm 1 SE

Table 34. Mean quality ratings in 6 categories on 4 ET₀-based irrigation levels

<i>Neomarica caerulea</i>													
foliage	NOV	DEC	JAN	FEB	MAR	APR	MAY	JUN	JUL	AUG	SEP	OCT	AVG
80%	3.0	2.8	3.8	3.0	2.9	3.0	3.3	3.2	3.7	3.0	3.1	3.0	3.2
60%	3.1	3.0	3.8	3.0	3.0	3.0	3.0	3.1	3.0	3.1	3.1	3.3	3.1
40%	3.0	3.0	3.7	3.0	3.0	3.0	3.0	3.0	3.2	3.1	3.0	3.0	3.1
20%	3.2	3.0	4.0	3.0	3.4	3.3	3.0	3.0	3.1	3.1	3.1	3.1	3.2
flowering													
80%									2.5	1.7			2.1
60%									2.8	1.5			2.1
40%									2.8	1.3			2.1
20%									2.6	1.3			2.0
pest tolerance													
80%	5.0	5.0	5.0	5.0	5.0	5.0	5.0	5.0	5.0	5.0	5.0	5.0	5.0
60%	5.0	5.0	5.0	5.0	5.0	5.0	5.0	5.0	5.0	5.0	5.0	5.0	5.0
40%	5.0	5.0	5.0	5.0	5.0	5.0	5.0	5.0	5.0	5.0	5.0	5.0	5.0
20%	5.0	5.0	5.0	5.0	4.7	5.0	5.0	5.0	5.0	5.0	5.0	5.0	5.0
disease resistance													
80%	5.0	5.0	5.0	5.0	5.0	5.0	5.0	5.0	5.0	5.0	5.0	5.0	5.0
60%	5.0	5.0	5.0	5.0	5.0	5.0	4.5	5.0	5.0	5.0	5.0	5.0	5.0
40%	5.0	5.0	5.0	5.0	5.0	5.0	5.0	5.0	5.0	5.0	5.0	5.0	5.0
20%	5.0	5.0	5.0	5.0	5.0	5.0	5.0	5.0	5.0	5.0	5.0	5.0	5.0
vigor													
80%	3.3	3.1	2.7	2.9	3.3	3.2	3.1	3.2	4.2	4.4	3.7	3.8	3.4
60%	3.4	3.9	3.0	3.3	3.4	3.6	3.3	3.2	4.1	4.7	3.9	4.3	3.7
40%	3.4	3.8	2.7	3.1	3.3	3.2	3.3	3.2	4.2	4.5	3.8	4.4	3.6
20%	3.8	3.8	3.5	3.3	3.5	3.5	3.8	3.8	4.3	4.6	3.8	4.2	3.8
overall appearance													
80%	3.1	3.1	2.8	2.7	2.8	3.2	2.8	3.2	4.3	4.6	3.7	4.0	3.3
60%	3.4	3.9	3.1	3.3	3.2	3.6	3.0	3.1	4.4	4.8	3.8	4.1	3.6
40%	3.6	3.8	3.1	3.0	3.0	3.2	3.2	3.3	4.4	4.5	3.7	4.2	3.6
20%	3.7	3.8	3.6	3.5	3.2	3.4	3.2	3.5	4.7	4.7	4.0	4.5	3.8

Table 35. Master Gardener average annual quality ratings and 2-year growth for *Neomarica caerulea*

COUNTY	Orange	Shasta	Ventura
Sunset Zone	23	9	21
foliage	3.8	2.4	3.2
flower	2.8		1.2
bloom period	May-Sep		May
pest tolerance	5.0	4.8	5.0
disease resistance	5.0	4.8	5.0
vigor	3.9	2.4	2.9
overall appearance	4.0	2.2	3.0
MSMTS			
relative PGI	2.4	2.1	0.8
avg ht (cm)	75	70	95
avg wd (cm)	56	71	131
AVG HT (in)	29	28	37
AVG WD (in)	22	28	3