

Table 18a. *Rhaphiolepis indica* 'Parhap' Oriental Pearl average monthly quality ratings (scale 1-5, 1= lowest, 5 = highest) at UC Davis on 3 ETo-based irrigation levels in 2020.

Category	ET _o %	Apr	May	Jun	Jul	Aug	Sep	Oct	AVG
Overall Appearance	80	3.6	3.7	3.8	4.0	4.0	4.4	4.2	4.0
	50	3.4	3.4	3.9	3.9	3.9	4.1	4.1	3.8
	20	4.2	3.6	3.7	3.7	4.0	3.6	3.8	3.8
Foliage	80	3.4	4.3	4.6	4.9	5.0	5.0	5.0	4.6
	50	3.6	4.4	4.7	4.3	4.9	4.9	4.9	4.5
	20	3.9	4.1	4.4	4.6	5.0	4.7	4.7	4.5
Flower	80	1.3	0.3	0.0	0.0	0.0	0.0	0.0	0.2
	50	0.7	0.6	0.0	0.0	0.0	0.0	0.0	0.2
	20	2.7	0.6	0.0	0.0	0.0	0.0	0.0	0.5
Pest Resistance	80	5.0	4.4	5.0	5.0	5.0	4.9	5.0	4.9
	50	5.0	5.0	5.0	5.0	5.0	5.0	5.0	5.0
	20	5.0	5.0	5.0	5.0	5.0	5.0	5.0	5.0
Disease Resistance	80	3.7	4.9	4.7	5.0	5.0	5.0	5.0	4.8
	50	3.9	5.0	5.0	5.0	5.0	5.0	5.0	4.8
	20	4.1	5.0	4.6	5.0	5.0	5.0	5.0	4.8
Vigor	80	3.9	3.9	3.3	5.0	5.0	4.4	5.0	4.3
	50	4.0	4.3	3.7	5.0	5.0	4.7	4.9	4.5
	20	4.3	4.1	3.7	4.9	4.9	4.3	4.4	4.4

Table 18b. *Rhaphiolepis indica* 'Parhap' Oriental Pearl average monthly quality ratings (scale 1-5, 1= lowest, 5 = highest) at South Coast REC on 3 ETo-based irrigation levels in 2020.

Category	ET _o %	Apr	May	Jun	Jul	Aug	Sep	Oct	AVG
Overall Appearance	80	4.8	3.0	3.7	3.7	3.6	3.1	3.1	3.6
	50	4.1	3.4	3.6	3.6	3.6	3.1	3.1	3.5
	20	4.8	3.2	3.6	3.5	3.4	3.1	3.1	3.5
Foliage	80	4.8	4.1	4.4	4.3	4.1	3.1	3.1	4.0
	50	5.0	4.6	4.5	4.5	4.1	3.2	3.1	4.2
	20	4.9	4.4	4.7	4.4	4.0	3.3	3.2	4.1
Flower	80	3.1	0.0	0.0	0.0	0.4	0.0	0.0	0.5
	50	4.3	0.0	0.0	0.0	0.0	0.0	0.0	0.6
	20	3.6	0.1	0.1	0.0	0.0	0.0	0.0	0.6
Pest Resistance	80	5.0	5.0	5.0	5.0	4.9	4.9	4.9	5.0
	50	5.0	4.9	5.0	5.0	5.0	5.0	5.0	5.0
	20	5.0	5.0	4.9	4.9	4.9	4.9	4.9	4.9
Disease Resistance	80	4.9	5.0	5.0	4.9	4.9	4.9	4.8	4.9
	50	5.0	5.0	5.0	5.0	5.0	5.0	5.0	5.0
	20	5.0	5.0	5.0	5.0	5.0	5.0	5.0	5.0
Vigor	80	5.0	3.3	4.4	4.4	4.4	4.3	4.4	4.3
	50	5.0	4.1	3.9	3.9	4.0	3.7	3.7	4.1
	20	5.0	3.6	4.1	3.9	3.9	3.7	3.7	4.0

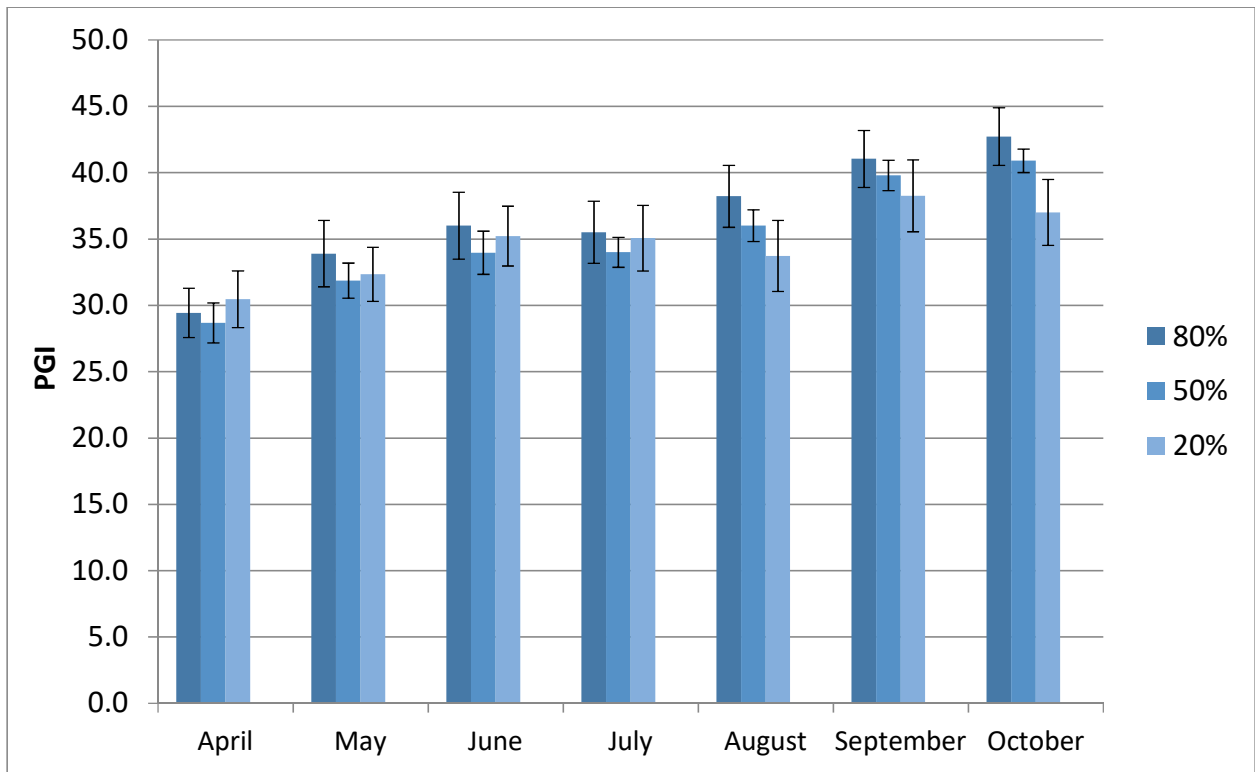


Figure 11a. *Rhaphiolepis indica* 'Parhap' Oriental Pearl average monthly plant growth index (PGI) at UC Davis on 3 ETo-based irrigation levels in 2020.

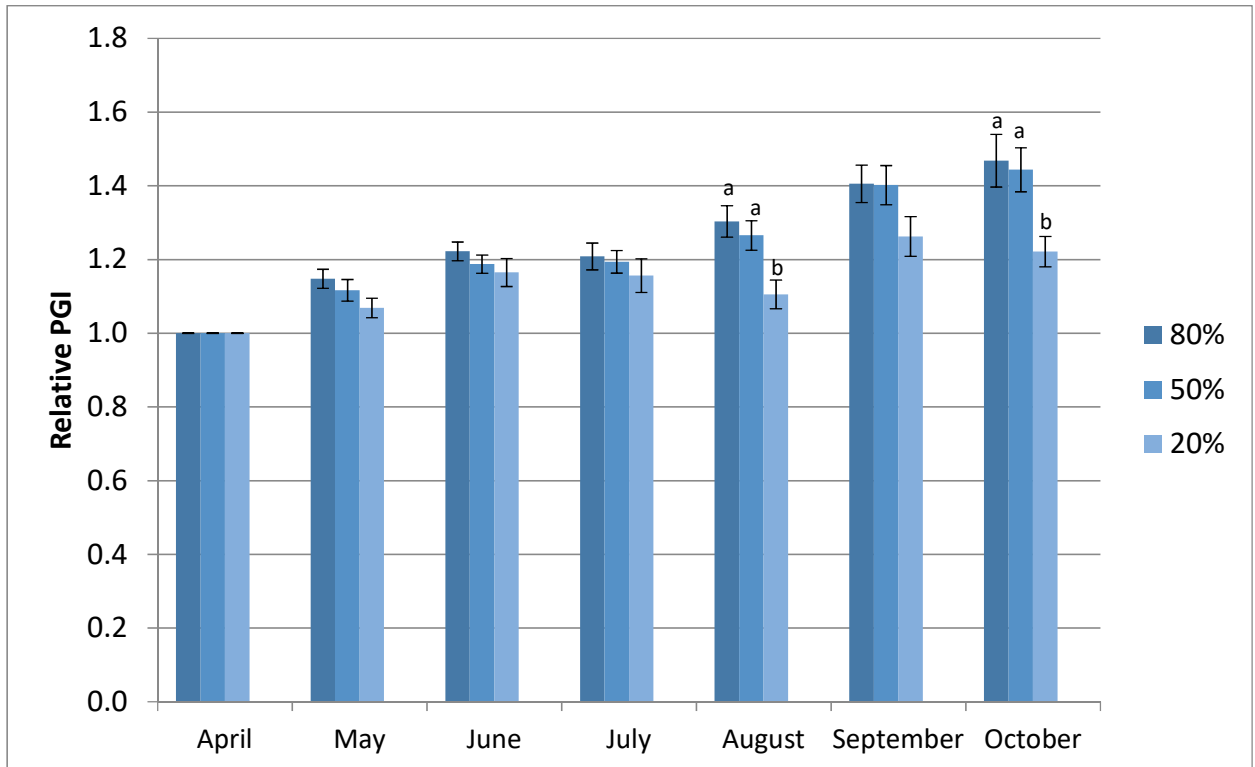


Figure 11b. *Rhaphiolepis indica* 'Parhap' Oriental Pearl average monthly relative plant growth index (RPGI) at UC Davis on 3 ETo-based irrigation levels in 2020.

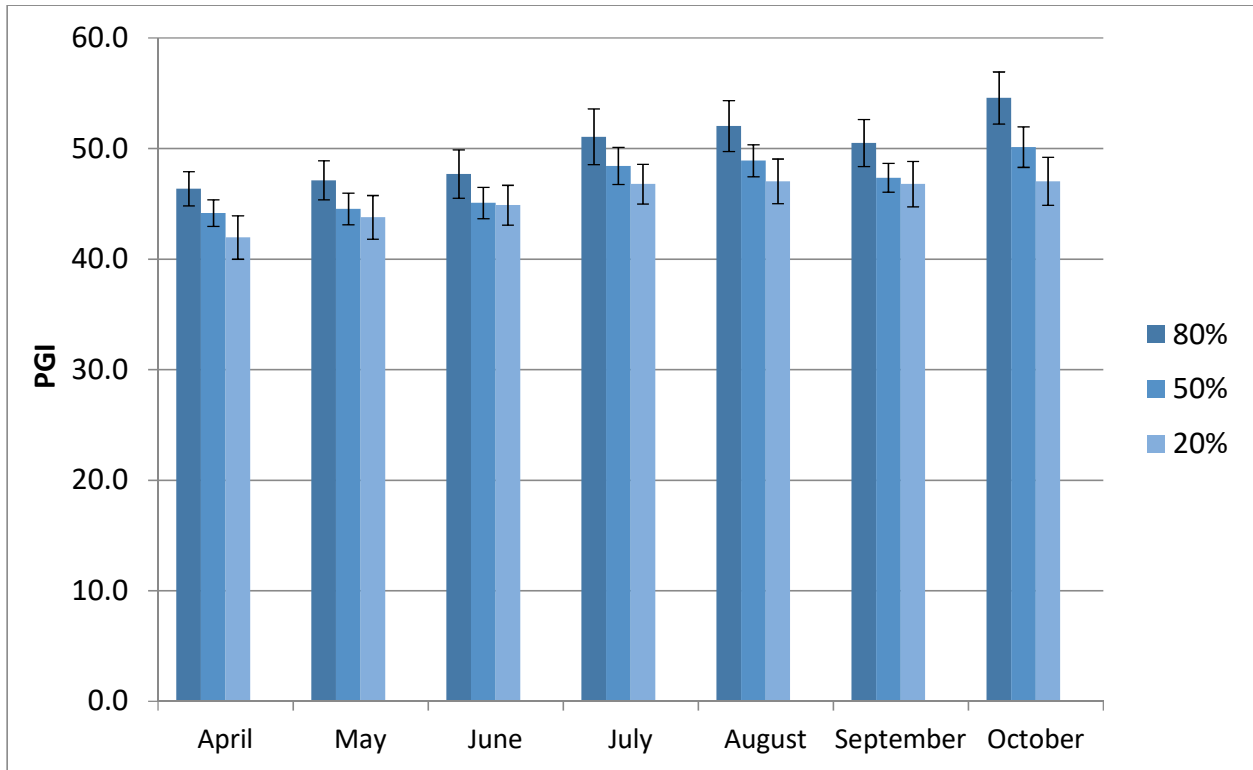


Figure 11c. *Rhaphiolepis indica* 'Parhap' Oriental Pearl average monthly plant growth index (PGI) at South Coast REC on 3 ETo-based irrigation levels in 2020.

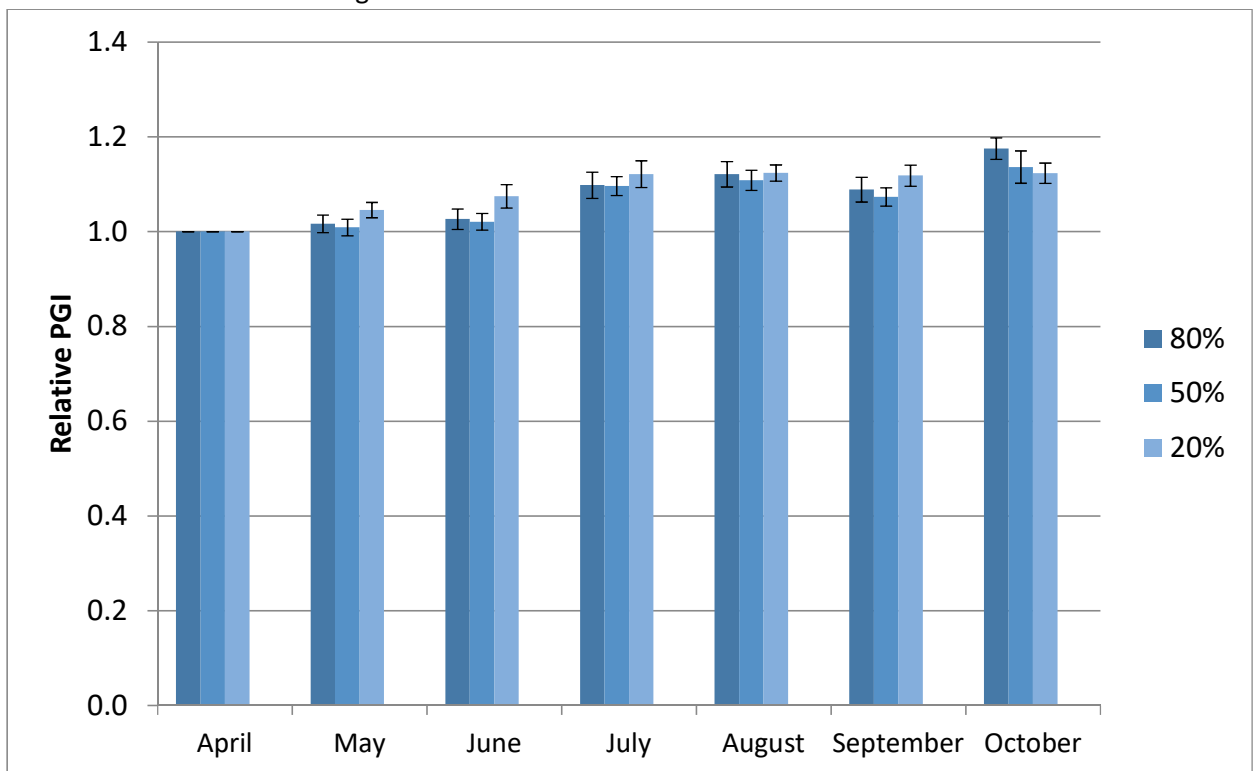


Figure 11d. *Rhaphiolepis indica* 'Parhap' Oriental Pearl average monthly relative plant growth index (RPGI) at South Coast REC on 3 ETo-based irrigation levels in 2020.