

CIMIS

California
Irrigation
Management
Information
System

2008/05/14

What is CIMIS?

- A network of over 130 fully automated weather stations that collect weather data throughout California and provide estimates of Reference Evapotranspiration (ET_o) to the users

Station Location Map

- Spatial Overview
- Spatial Model

View Maps

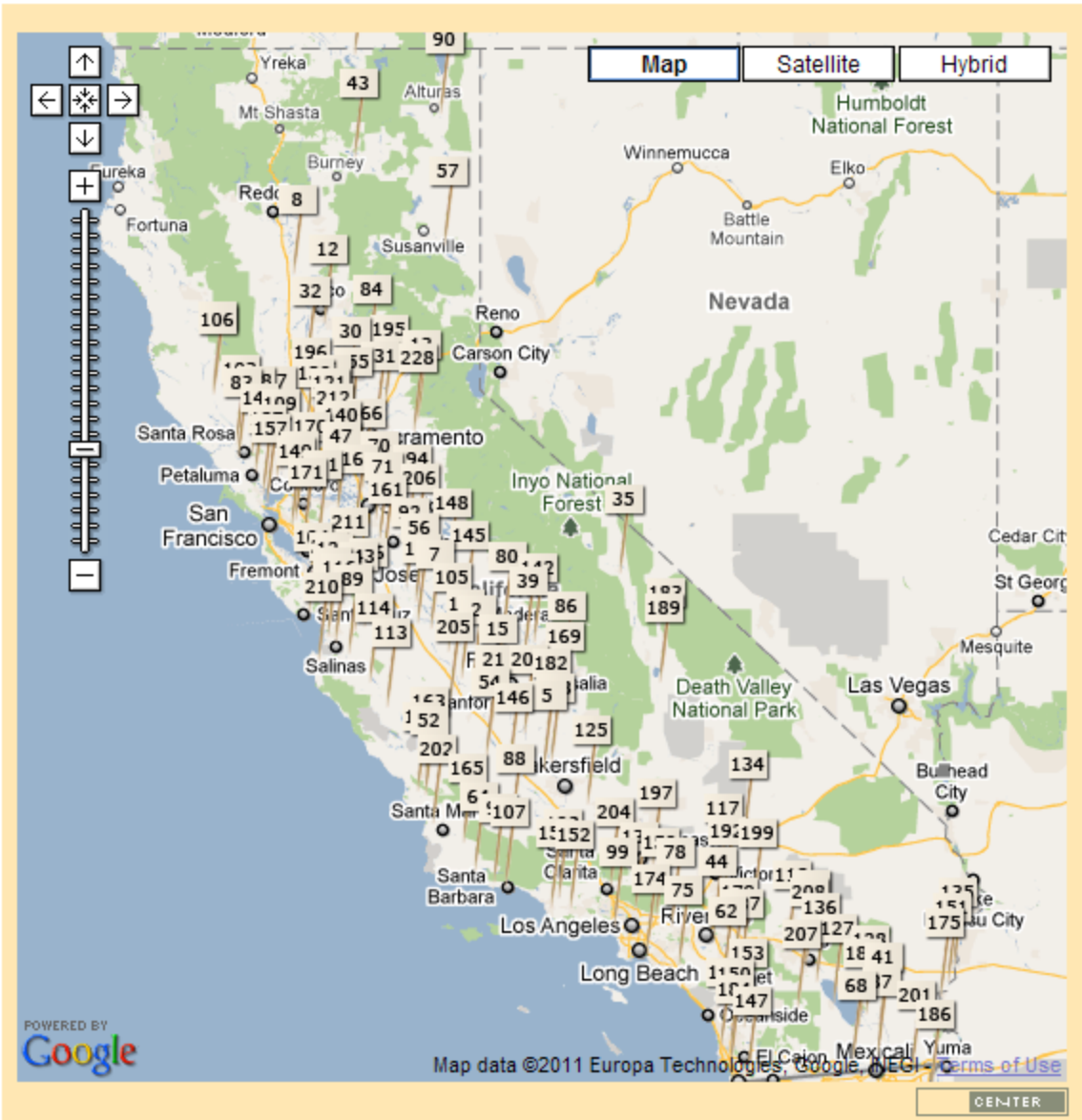
- ETo Map
- Solar Radiation Map
- Station Location Map
- ETo Zones Map

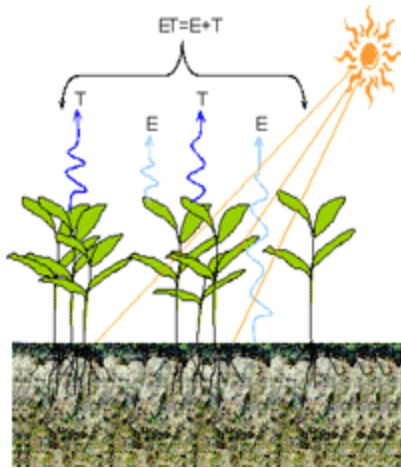
Generate Report

- Logon
- Map Reports
- Map Reports Help

Map

The Station Location Map is created by overlaying geographic markers for each CIMIS station on top of Google maps. You can zoom in and out to see the exact station locations and you may also click the station marker for more detailed information.





What is CIMIS?

CIMIS calculates estimates of grass reference evapotranspiration (ET_o)

Evapotranspiration (ET) is the loss of water to the atmosphere by the combined processes of evaporation (from soil and plant surfaces) and transpiration (from plant tissues). It is an indicator of how much water your crops, lawn, garden, and trees need for healthy growth and productivity.

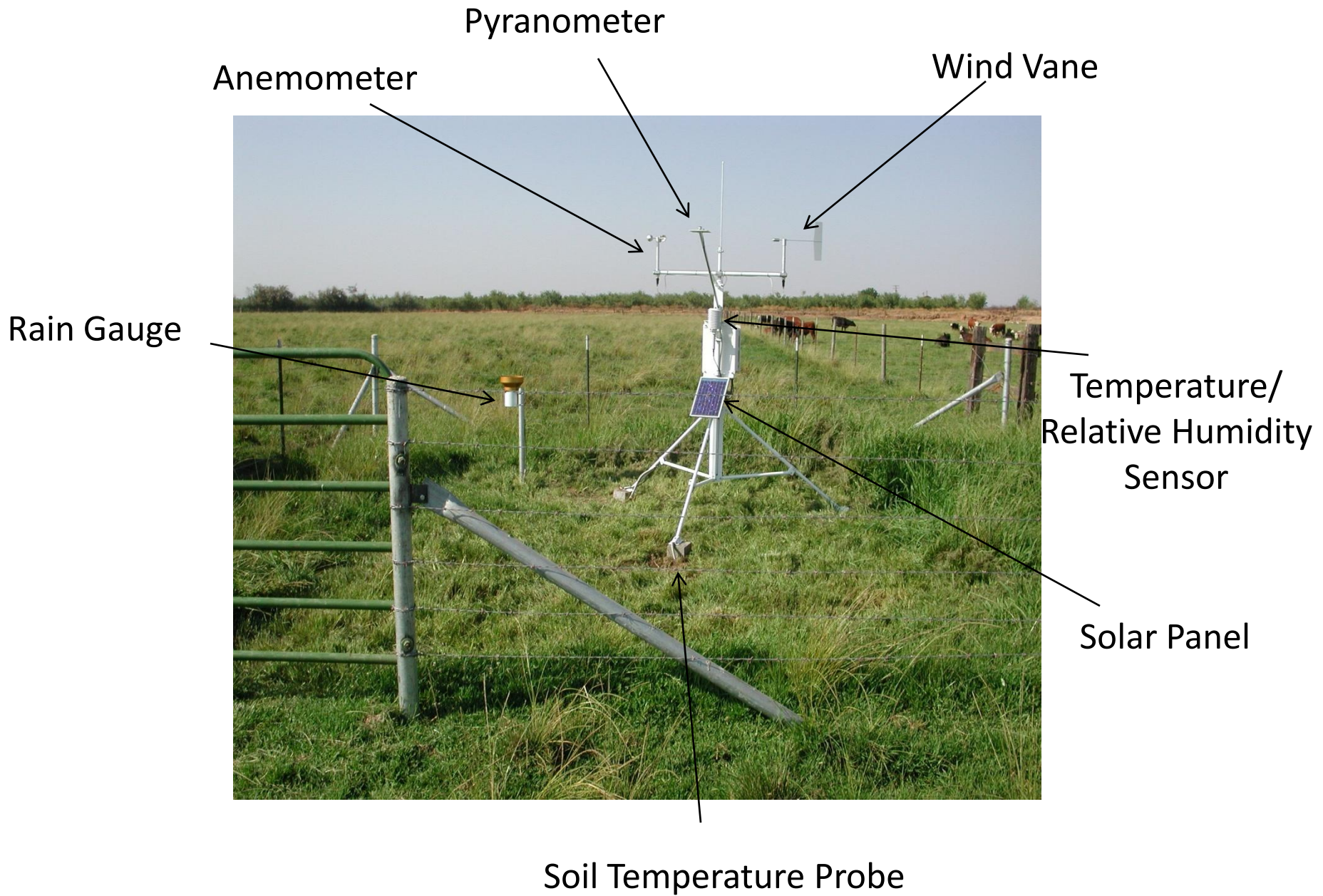
What is CIMIS?

CIMIS was designed to assist with efficient water and energy use.

CIMIS helps agricultural growers and landscape managers administering parks, golf courses and other landscapes develop water budgets for determining when to irrigate and how much water to apply.

Who uses CIMIS data?

- Growers.
- Consultants.
- Water agencies.
- Public agencies.
- Home owners.
- Researchers.
- Firefighters.
- Investigators



Pyranometer

Anemometer

Wind Vane

Rain Gauge

Temperature/
Relative Humidity
Sensor

Solar Panel

Soil Temperature Probe

PS12 POWER SUPPLY WITH 12V CHARGING REGULATOR



CAMPBELL SCIENTIFIC
INC. Logan, Utah

MADE IN USA

WARNING:
PERMANENT DAMAGE TO RECHARGEABLE
CELLS MAY RESULT IF DISCHARGED
BELOW 10.5 VOLTS

FUNCTION



PS12 BATTERY
EXTERNAL BATTERY - DO NOT USE WITH
INTERNAL RECHARGEABLE BATTERY
CHARGE VOLTAGE PRESENT
POWER TO +12 TERMINALS
INPUT FROM CHARGER OR SOLAR PANEL
18-28 VDC OR 18 V RMS AC, POSITIVE TO
EITHER TERMINAL, NEGATIVE TO OTHER
POWER TO DATALOGGERS OR
12V PERIPHERALS

CAMPBELL SCIENTIFIC INC.
Logan, Utah

SE OFF 7 8 9 11 12
G G H L AG H L
F 5 6 7 8 9 10 11 12
E3 A0 G L
5V 5V G G
SW 12V CTRL
SW 12V

SE
1 2 3 4 5 6 7 8 9 10 11 12
AG F G
G C1 V C6 C5 C4 C3 C2 C1 G 12V I

EARTH GROUND

G 12V
POWER IN

CR10X WITH
MADE IN

SOM

CAMPBELL SCIENTIFIC
INC. Logan UT

COM200 MODEM

Complies with Part 68, FCC rules, FCC Registration No. B90USA-31402-888-1
Regist. Equivalence 0.5A, Required Connector US0C RJ11C.
This equipment complies with the requirements in Part 15 of FCC Rules for Class A
Computing device. Operation of this equipment in a residential area may cause
unacceptable interference to radio and TV reception requiring the operator to take
whatever steps are necessary to correct the interference.

SN: 6120

MADE IN USA

How does CIMIS work?

- Dataloggers poll the sensors every minute.
- Solar radiation (R_s), air temperature (T_a), wind speed (U_2), and Relative Humidity (RH) data is collected. Additionally precipitation (P), soil temperature (T_s) and wind direction are measured.
- Sixty minute-by-minute readings are averaged/totalled.

How does CIMIS work?

- Daily maximum, minimum, average, and total values are calculated by the end of each day.
- Hourly and daily values are stored in the dataloggers.
- The CIMIS computer calls stations every 6 hours and retrieves data.
- Data goes through quality control (QC) procedures.
- Measured and calculated parameters are stored in the CIMIS database.
- Reference evapotranspiration (ET_o) is calculated.
- Final data is posted on the CIMIS website.

<http://wwwcimis.water.ca.gov/cimis/data.jsp>



CIMIS

CALIFORNIA IRRIGATION MANAGEMENT INFORMATION SYSTEM
DEPARTMENT OF WATER RESOURCES
OFFICE OF WATER USE EFFICIENCY



WELCOME

INFO
CENTER

CIMIS
DATA

RESOURCE
CENTER

MY CIMIS

SPATIAL
CIMIS

Welcome Back DWR-SAN

- Log Off
- Hourly
- Daily
- Daily ETo Variance
- Monthly
- Monthly Average ETo

Quality Control

- QC Overview
- Current Flag Summary
- Current Hourly Flags
- Current Daily Flags
- Former Flag Summary
- Former Hourly Flags
- Former Daily Flags

More Info

- Station List
- Data Types
- Data Formats
- Data Size

CIMIS Data

The CIMIS Data page enables users to:

- View daily and monthly sample reports;
- Create and edit a user account;
- Retrieve CIMIS data;
- Read important information on CIMIS quality control;
- Read detailed information on CIMIS data types, formats, and sizes;
- View the weather station list.



CIMIS data can be accessed and retrieved free of charge. Although membership is not a requirement, access to data for Unregistered Users is limited to the Sample Reports. Registered Users have the privilege of accessing the entire CIMIS data set. Registration information is confidential and used by CIMIS staff for statistical reports and to provide better services. Therefore, we encourage users to register and create a CIMIS user account.

Note: CIMIS Date Ranges defaults to seven days (starting from yesterday) for hourly and daily reports, and twelve months (starting from last month) for monthly reports. These defaults can be changed by going into the My CIMIS tab and changing your preferences. These new preferences will become your defaults for all data reports generated afterwards, from both the Data and My CIMIS tabs.

Welcome Back DWR-SAN

- Log Off** Clicking on **Log Off** will disconnect your computer from the CIMIS database.
- Hourly** **Hourly** provides standard hourly and hourly by sensor data reports for selected weather station(s) and date range specified.
- Daily** **Daily** provides standard daily and daily by sensor data reports for selected weather station(s) and date range specified.
- Daily ETo Variance** The **Daily ETo Variance** provides a comparative report of ETo variance for selected station(s) and date range specified.
- Monthly** **Monthly** provides standard monthly data reports for the weather station(s) and date

CIMIS (California Irrigation Management Information System)

Daily Report

Rendered in English Units.
 April 6, 2011 - April 12, 2011
 Printed on April 13, 2011

FivePoints - San Joaquin Valley - Station 2

Date	CIMIS ETo (in)	Precip (in)	Soil Rad (Ly/day)	Avg Vap (mBars)	Max Air Temp (°F)	Min Air Temp (°F)	Avg Air Temp (°F)	Max Rel Hum (%)	Min Rel Hum (%)	Avg Rel Hum (%)	Dew Pt (°F)	Avg wSpd (MPH)	Wnd Run (miles)	Avg Soil Temp (°F)
04/06/2011	0.24	0.25	546	9.2	75.5	49.5	62.0	76	26	48	42.2	10.5	254.3	60.9
04/07/2011	0.05 R	0.30	182	8.2	53.9 Y	35.5 Y	47.4	94	48	74	39.4	7.0	168.8	59.6
04/08/2011	0.10	0.01	413	7.0	55.4 Y	34.9 Y	43.5	97	41	72	35.3	5.1	123.9	57.1
04/09/2011	0.17	0.00	553	7.0	63.4	34.2 Y	49.3	92	34	58	35.3	5.0	119.5	56.5
04/10/2011	0.17	0.00	557	7.4	68.6	36.3	52.5	87	31	55	36.8	3.9	94.8	57.1
04/11/2011	0.17	0.00	490	9.0	67.7	45.6	55.0	80	39	61	41.9	7.7	186.8	57.7
04/12/2011	0.18	0.00	557	9.4	71.0	43.8	56.4	86	39	60	42.9	6.1	146.9	58.4
Tots/Avgs	1.08	0.56	471	8.2	65.1	40.0	52.3	87	37	61	39.1	6.5	156.4	58.2

Flag Legend

A - Historical Average	I - Ignore	R - Far out of normal range
C or N - Not Collected	M - Missing Data	S - Not in service
H - Hourly Missing or Flagged Data	Q - Related Sensor Missing	Y - Moderately out of range
Conversion Factors		
Ly/day/2.065=W/sq.m	inches * 25.4 = mm	(F-32) * 5/9 = c
mph * 0.447 = m/s	mBars * 0.1 = kPa	--



Hourly Report

Rendered in METRIC Units.
 April 6, 2011 - April 12, 2011
 Printed on April 13, 2011

FivePoints - San Joaquin Valley - Station 2

Date	Hour	ETo (mm)	Precip (mm)	Sol Rad (W.sq.m)	Vapor Pressure (kPa)	Air Temp (°C)	Rel Hum (%)	Dew Point (°C)	Wind Speed (m/s)	Wind Dir (0-360)	Soil Temp (°C)
04/06/2011	0100	0.02	0.00	0	1.1	13.7	69	8.0	3.4	307.6	16.3
	0200	0.02	0.00	0	1.0	13.2	69	7.7	3.9	304.5	16.2
	0300	0.02	0.00	0	1.0	13.8	63	6.9	3.4	293.1	16.1
	0400	0.01	0.00	0	1.0	12.8	65	6.4	2.9	284.7	16.0
	0500	0.02	0.00	0	0.9	12.1	65	5.8	3.7	294.7	15.9
	0600	0.01	0.00	3	0.9	10.2	74	5.8	4.2	303.6	15.8
	0700	0.06	0.00	121	1.0	10.6	76	6.6	3.7	304.3	15.7
	0800	0.20	0.10	303	1.0	15.0	59	6.9	3.5	298.6	15.6
	0900	0.37	0.70 Y	485	1.0	16.6	53	7.1	5.7	311.8	15.5
	1000	0.50 Y	1.20 Y	643	1.0 Y	17.8	49 Y	6.9 Y	6.0	321.3	15.5
	1100	0.61 Y	1.00 Y	759	1.0 Y	19.1	45 Y	6.9 Y	6.1	311.8	15.5
	1200	0.67	0.70 Y	824	1.0	20.5	43	7.4	5.9	314.2	15.5
	1300	0.71 Y	1.00 Y	828	0.9 Y	21.8	35 Y	5.5 Y	5.9	313.9	15.6
	1400	0.67 Y	1.40 Y	769	0.9 Y	22.3	34 Y	5.8 Y	5.7	324.7	15.7
	1500	0.60	0.30 Y	659	0.9	23.5	30	4.7	5.4	328.0	16.0
	1600	0.49	0.00	501	0.8	23.9	27	4.0	5.3	341.5	16.2
	1700	0.37	0.00	318	0.8	23.3	26	2.9	5.6	347.0	16.4
	1800	0.22	0.00	133	0.8	21.8	31	3.9	4.8	346.1	16.5
	1900	0.12	0.00	8	0.8	18.9	37	4.0	5.2	325.0	16.6
	2000	0.09	0.00	0	0.8	16.5	45	4.5	4.9	313.5	16.6
	2100	0.07	0.00	0	0.9	15.1	52	5.4	4.9	313.7	16.6
	2200	0.05	0.00	0	0.8	13.8	53	4.3	4.0	318.1	16.6
	2300	0.06	0.00	0	0.8	12.8	54	3.7	5.0	325.1	16.5
	2400	0.04	0.00	0	0.8	11.9	58	3.8	3.8	331.8	16.4
Tots/Avg		6.00	6.40	265	0.9	16.7	51	5.6	4.7	315.8	16.1

Whats new?

Hourly data updated every 6 hours

Spatial CIMIS

My CIMIS

Email scheduler



CIMIS

CALIFORNIA IRRIGATION MANAGEMENT INFORMATION SYSTEM
DEPARTMENT OF WATER RESOURCES
OFFICE OF WATER USE EFFICIENCY



- WELCOME
- INFO CENTER
- CIMIS DATA**
- RESOURCE CENTER
- MY CIMIS
- SPATIAL CIMIS

Welcome Back DWR-SAN

- Log Off
- Hourly**
- Daily
- Daily ETo Variance
- Monthly
- Monthly Average ETo

Quality Control

- QC Overview
- Current Flag Summary
- Current Hourly Flags
- Current Daily Flags
- Former Flag Summary
- Former Hourly Flags
- Former Daily Flags

More Info

- Station List
- Data Types
- Data Formats
- Data Size

CIMIS Data

The CIMIS Data page enables users to:

- View daily and monthly sample reports;
- Create and edit a user account;
- Retrieve CIMIS data;
- Read important information on CIMIS quality control;
- Read detailed information on CIMIS data types, formats, and sizes;
- View the weather station list.



CIMIS data can be accessed and retrieved free of charge. Although membership is not a requirement, access to data for Unregistered Users is limited to the Sample Reports. Registered Users have the privilege of accessing the entire CIMIS data set. Registration information is confidential and used by CIMIS staff for statistical reports and to provide better services. Therefore, we encourage users to register and create a CIMIS user account.

Note: CIMIS Date Ranges defaults to seven days (starting from yesterday) for hourly and daily reports, and twelve months (starting from last month) for monthly reports. These defaults can be changed by going into the My CIMIS tab and changing your preferences. These new preferences will become your defaults for all data reports generated afterwards, from both the Data and My CIMIS tabs.

Welcome Back DWR-SAN

[Log Off](#) Clicking on **Log Off** will disconnect your computer from the CIMIS database.

[Hourly](#) **Hourly** provides standard hourly and hourly by sensor data reports for selected weather station(s) and date range specified.

Necessary to select the end date as today's date. Default setting is yesterday's date.

The screenshot shows a web browser window with the URL `http://www.cimis.water.ca.gov/cimis/logon.do?forwardURL=/frontHourlyReport&setTab=data`. The page content includes several sections:

- Sensors:** A checkbox labeled "Select Sensors" is present.
- Hours:** A checkbox labeled "Select Hours" is present.
- Units:** A dropdown menu for "Unit:" is set to "Metric".
- Date Range:** This section is circled in red. It contains two rows of date pickers:
 - Start Date: April 25, 2011
 - End Date: May 1, 2011
- Reporting Method:** A radio button labeled "Web Report" is selected. Other options include "PDF", "CSV with Headers", "CSV without Headers (non-report format)", and "XML".

At the bottom right of the form, there are "Submit" and "Reset" buttons.

1800	0.25	0.00	198	0.5	24.1	15	-3.9	3.5	311.9	16.1
1900	0.09	0.00	26	0.5	20.7	21	-2.7	2.0	322.0	16.2
2000	0.04	0.00	0	0.5	16.9	28	-1.6	1.4	319.4	16.3
2100	0.05	0.00	0	0.5	13.6	34	-2.1	2.2	254.5	16.3
2200	0.04	0.00	0	0.5	13.2	33	-2.9	1.9	255.1	16.2
2300	0.03	0.00	0	0.5	11.2	36	-3.2	1.6	191.8	16.1
2400	0.02	0.00	0	0.5	9.2	44	-2.6	1.6	180.3	16.0
Tots/Avgs	6.82	0.00	311	0.5	16.3	30	-2.5	2.8	273.0	15.5

FivePoints - San Joaquin Valley - Station 2

Date	Hour	ETo (mm)	Precip (mm)	Sol Rad (W/sq.m)	Vapor Pressure (kPa)	Air Temp (°C)	Rel Hum (%)	Dew Point (°C)	Wind Speed (m/s)	Wind Dir (0-360)	Soil Temp (°C)
05/02/2011	0100	0.02	0.00	0	0.5	8.8	46	-2.1	1.8	174.8	15.9
	0200	0.01	0.00	0	0.5	7.9	50	-1.9	1.3	198.8	15.8
	0300	0.01	0.00	0	0.6	7.4	53	-1.4	1.3	226.2	15.7
	0400	0.01	0.00	0	0.5	6.7	50	-3.0	1.2	209.0	15.5
	0500	0.01	0.00	0	0.5	6.0	52	-3.2	1.2	220.5	15.4
	0600	0.02	0.00	42	0.5	6.3	57	-1.5	1.0	125.9	15.3
	0700	0.11	0.00	209	0.7	11.8	48	1.2	0.8	168.9	15.2
	0800	0.24	0.00	397	0.7	17.3	37	2.3	0.8	118.1	15.1
	0900	--M	--M	--M	--M	--M	--M	--M	--M	--M	--M
	1000	--M	--M	--M	--M	--M	--M	--M	--M	--M	--M
	1100	--M	--M	--M	--M	--M	--M	--M	--M	--M	--M
	1200	--M	--M	--M	--M	--M	--M	--M	--M	--M	--M
	1300	--M	--M	--M	--M	--M	--M	--M	--M	--M	--M
	1400	--M	--M	--M	--M	--M	--M	--M	--M	--M	--M
	1500	--M	--M	--M	--M	--M	--M	--M	--M	--M	--M
	1600	--M	--M	--M	--M	--M	--M	--M	--M	--M	--M
	1700	--M	--M	--M	--M	--M	--M	--M	--M	--M	--M
	1800	--M	--M	--M	--M	--M	--M	--M	--M	--M	--M
	1900	--M	--M	--M	--M	--M	--M	--M	--M	--M	--M
	2000	--M	--M	--M	--M	--M	--M	--M	--M	--M	--M
	2100	--M	--M	--M	--M	--M	--M	--M	--M	--M	--M
	2200	--M	--M	--M	--M	--M	--M	--M	--M	--M	--M
	2300	--M	--M	--M	--M	--M	--M	--M	--M	--M	--M
	2400	--M	--M	--M	--M	--M	--M	--M	--M	--M	--M
Tots/Avgs		0.43	0.00	81	0.6	9.0	49	-1.2	1.2	180.3	15.5

Spatial cimis

www.cimis.water.ca.gov/cimis/cimiSatModel.jsp

Spatial CIMIS

- Because of California's diverse landmass and climate, many locations within the state lack a representative CIMIS station
- CIMIS initiated a project with the UC Davis to explore the potential for using remotely sensed data for the estimation of ETo (to mitigate the spatial data gap).
- Geostationary Operational Environmental Satellites (GOES) were selected..

- The Department of Water Resources (DWR) formed an advisory committee comprised of individuals with expertise in remote sensing, GIS, modeling, and water management from DWR and UCD. The committee met, on an as needed basis, to discuss new developments and plan future actions. After thorough research, the team decided to use combinations of data derived from satellites and interpolated between CIMIS station measurements to estimate ETo at a 2 km spatial resolution.

- Daily reference evapotranspiration (ET_o) at 2 km spatial resolution was calculated statewide using the American Society of Civil Engineers version of the Penman-Monteith equation (ASCE-PM). Required input parameters for the ASCE-PM ET_o equation are solar radiation (R_s), air temperature (T_a), relative humidity (RH), and wind speed at two meters height (U₂). These parameters are estimated at each pixel (2 km square grid) using various methods.

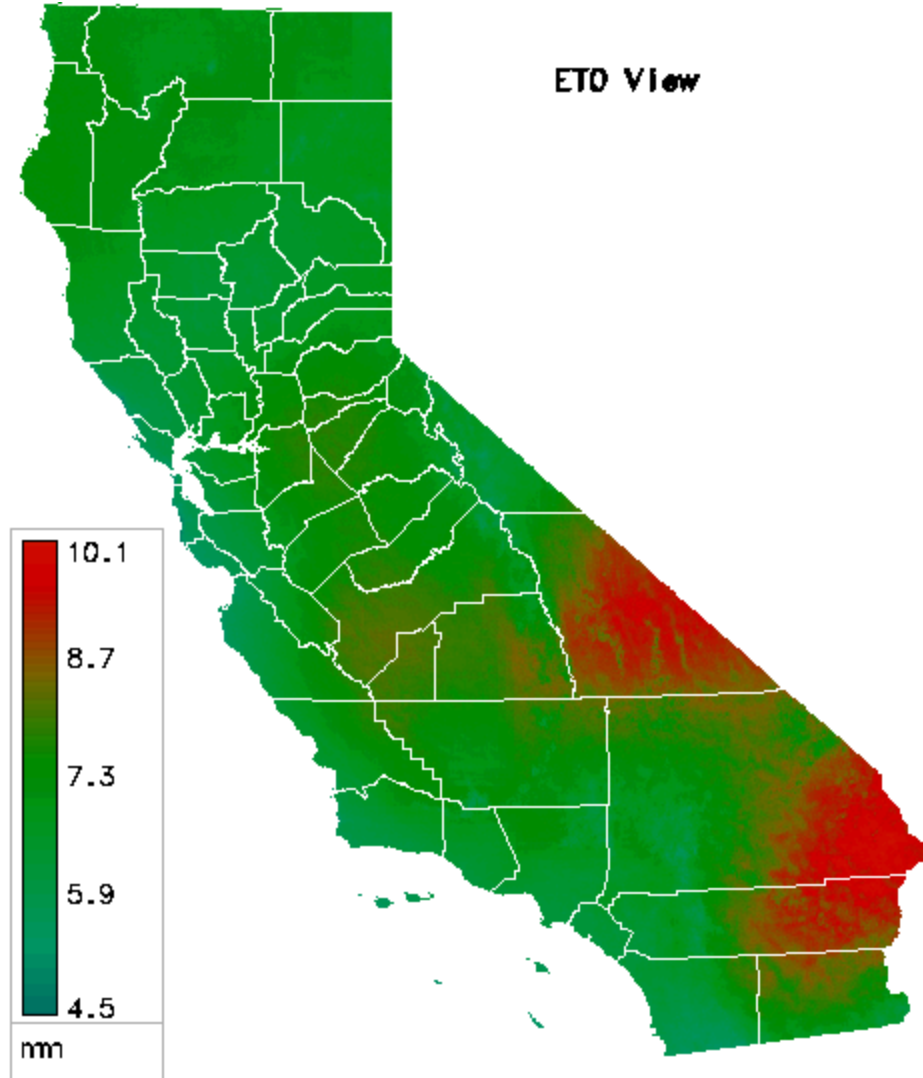
- Daily R_s (solar radiation) is generated from the visible band of the National Oceanic and Atmospheric Administration's (NOAA) Geostationary Operational Environmental Satellite (GOES) using the Heliosat-II model.

- Air temperature, relative humidity, and wind speed values at each pixel were obtained by interpolating between point measurements from the CIMIS stations. Two interpolation methods, DayMet and Spline, were selected based on accuracy of results, code availability, and computational efficiency.

- Daily R_s – from GOES
- Air Temperature (T_a), Relative Humidity (RH), Wind speed (U_2) collected from CIMIS weather stations. (Interpolated)
- Spatial CIMIS ET_0

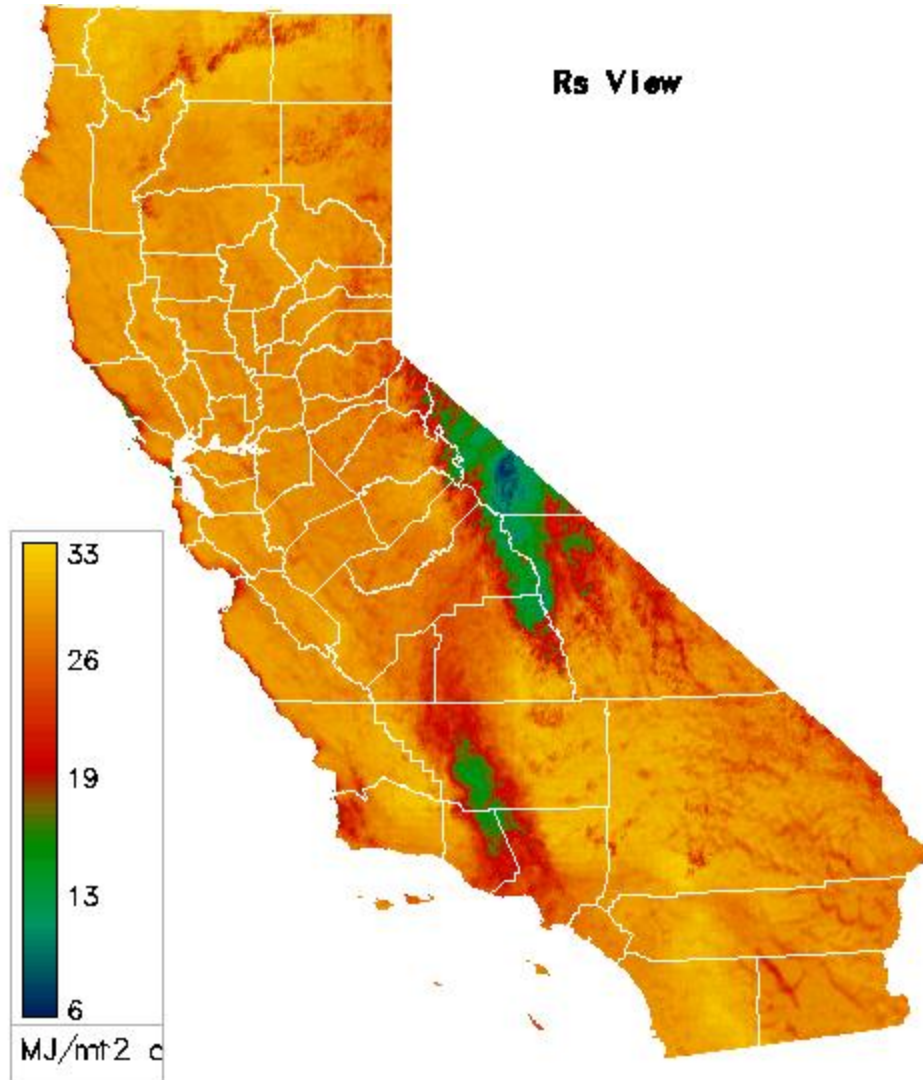
Daily CIMIS ET₀ Map

July 15, 2010



Daily solar radiation map

July 16, 2010



Spatial CIMIS Map Report

CIMIS - [Spatial CIMIS] - Windows Internet Explorer

http://www.cimis.water.ca.gov/cimis/cimiSat:SpacialCimis.jsp

Google

Search

Share

Check

Translate

AutoFill

Sign In

CIMIS - [Spatial CIMIS]

CALIFORNIA THE GOLDEN STATE

CALIFORNIA HOME PAGE GOVERNOR'S HOME PAGE

CIMIS

CALIFORNIA IRRIGATION MANAGEMENT INFORMATION SYSTEM
DEPARTMENT OF WATER RESOURCES
ADVANCEMENT OF WATER USE EFFICIENCY

WELCOME INFO CENTER CIMIS DATA RESOURCE CENTER MY CIMIS **SPATIAL CIMIS**

General

Spatial Overview
Spatial Model

View Maps

ETo Map
Solar Radiation Map
Station Location Map
ETo Zones Map

Welcome Back DWR-SAN

Log Off
Map Reports
Map Reports Help

Spatial CIMIS

The **Spatial CIMIS** page provides the ability to view daily reference evapotranspiration (ETo), daily solar radiation (Rs), station location, and long-term average ETo zones maps and to generate daily ETo and Rs data at 2 km spatial resolution for the State of California.



General

[Spatial Overview](#) The describes the needs for developing spatially distributed data and presents a brief outline of the processes involved.

[Spatial Model](#) The **Spatial Model** presents a brief description of the methodology used for developing spatially distributed data (maps) and provides links to useful resources for details.

View Maps

[ETo Map](#) The **ETo Map** allows users to view daily ETo values of the State of California at a 2 km spatial resolution for any day selected.

[Solar Radiation Map](#) The **Solar Radiation Map** allows users to view Rs values of the State of California at 2 km spatial resolution for any day selected.

[Station Location Map](#) **Location Maps** provides locations of currently active CIMIS stations overlaid on a Google Map. Click on a station flag to see location details.

[ETo Zones Map](#) The **ETo Zones Map** allows users to view the ETo Zones for the State of California. The map was developed by DWR and UC Davis and divides the State into 18 zones based on long-term monthly average ETo. At present time, the map is not available for downloading from the web.

Welcome Back DWR-SAN

Internet 100%

- General
- Spatial Overview
- Spatial Model
- View Maps
- ETo Map
- Solar Radiation Map
- Station Location Map
- ETo Zones Map
- Welcome Back DWR-SAN
- Log Off
- Map Reports
- Map Reports Help

Map Reports

This report will provide reference evapotranspiration (ETo) and Solar Radiation (Rs) data reports at a 2km spatial resolution. Reports can be queried using a Google maps interface or by zip codes.

For brief descriptions of variations in zip code reports, renaming selected data points, and scheduling Email delivery, [Click Here](#). Please select your method below:



Query Type

Specify how you will designate points of interest. **Map Coordinates** allows you to select map-markers using point-and-click or the address search feature. **Zip Code(s)** allows you to specify from one to many zip codes.

- Map Coordinates
 Zip Code(s)

Map

Map
Satellite
Hybrid

Map data ©2011 Europa Technology, Google, etc.

CENTER
RECALL
CLEAR

Coordinate Names

- | | |
|--|--|
| 1. <input style="width: 90%;" type="text" value="Old home place"/> | 2. <input style="width: 90%;" type="text" value="Paso Robles"/> |
| 3. <input style="width: 90%;" type="text" value="EMHE house"/> | 4. <input style="width: 90%;" type="text" value="Almond test site"/> |
| 5. <input style="width: 90%;" type="text" value="Mr Heintz"/> | 6. <input style="width: 90%;" type="text" value="JD man"/> |
| 7. <input style="width: 90%;" type="text" value="LG house"/> | 8. <input style="width: 90%;" type="text" value="(empty)"/> |
| 9. <input style="width: 90%;" type="text" value="(empty)"/> | 10. <input style="width: 90%;" type="text" value="(empty)"/> |

- No Delivery
 Email Report Daily
 Email Report Weekly (Monday Delivery)

Save

- General
- Spatial Overview
- Spatial Model
- View Maps
 - ETo Map
 - Solar Radiation Map
 - Station Location Map
 - ETo Zones Map
- Welcome Back DWR-SAN
- Log Off
- Map Reports
- Map Reports Help

Map Reports

This report will provide reference evapotranspiration (ETo) and Solar Radiation (Rs) data reports at a 2km spatial resolution. Reports can be queried using a Google maps interface or by zip codes.

For brief descriptions of variations in zip code reports, renaming selected data points, and scheduling Email delivery, [Click Here](#). Please select your method below: [Need Help?](#)

Query Type

Specify how you will designate points of interest. **Map Coordinates** allows you to select map-markers using point-and-click or the address search feature. **Zip Code(s)** allows you to specify from one to many zip codes.

Map Coordinates Zip Code(s)

Map

Address Search

Map Satellite Hybrid

Map data ©2011 Europa Technology, Google, etc. [Terms of Use](#)

CENTER RECALL CLEAR

Coordinate Names

- | | |
|--|--|
| 1. <input type="text" value="Old home place"/> | 2. <input type="text" value="Paso Robles"/> |
| 3. <input type="text" value="EMHE house"/> | 4. <input type="text" value="Almond test site"/> |
| 5. <input type="text" value="Mr Heintz"/> | 6. <input type="text" value="JD man"/> |
| 7. <input type="text" value="LG house"/> | 8. <input type="text" value="(empty)"/> |
| 9. <input type="text" value="(empty)"/> | 10. <input type="text" value="(empty)"/> |

No Delivery
 Email Report Daily
 Email Report Weekly (Monday Delivery)

Save

Map

Address Search

Map Satellite Hybrid

Map showing a street grid in Raisin City, Michigan. A red pin labeled '6' is located at the intersection of S Bryan Ave and W Manning Ave. Other streets shown include S Grantland Ave, S Henderson Rd, S Ormus Ave, S Hayes Ave, S Polk Ave, W South Ave, W Springfield Ave, W Dinuba Ave, and W Manning Ave. A cemetery is also marked near the bottom center.

Coordinate Names

- | | | | |
|----|---|-----|---|
| 1. | <input type="text" value="Old home place"/> | 2. | <input type="text" value="Paso Robles"/> |
| 3. | <input type="text" value="EMHE house"/> | 4. | <input type="text" value="Almond test site"/> |
| 5. | <input type="text" value="Mr Heintz"/> | 6. | <input type="text" value="JD man"/> |
| 7. | <input type="text" value="LG house"/> | 8. | <input type="text" value="(empty)"/> |
| 9. | <input type="text" value="(empty)"/> | 10. | <input type="text" value="(empty)"/> |

- No Delivery
- Email Report Daily
- Email Report Weekly (Monday Delivery)

Save

Units

Select unit.

Unit:

Metric

Or english

Date Range

Specify date range. The default setting for date range is the previous 7 days.

Start Date:

End Date:

Reporting Method

Select reporting method. Click [here](#) for details.

- Web Report
- CSV with Headers
- XML

Submit

Reset

Point #1 - (35.8594, -119.2059)

Date	ETo (in/day)	Rs (Ly/day)
07/14/2010	0.28	690.77
07/15/2010	0.30	686.21
07/16/2010	0.26	564.07
Totals/Avgs	0.84	647.02

Point #2 - (35.6595, -120.5750)

Date	ETo (in/day)	Rs (Ly/day)
07/14/2010	0.27	720.89
07/15/2010	0.29	713.69
07/16/2010	0.29	703.92
Totals/Avgs>	0.84	712.83

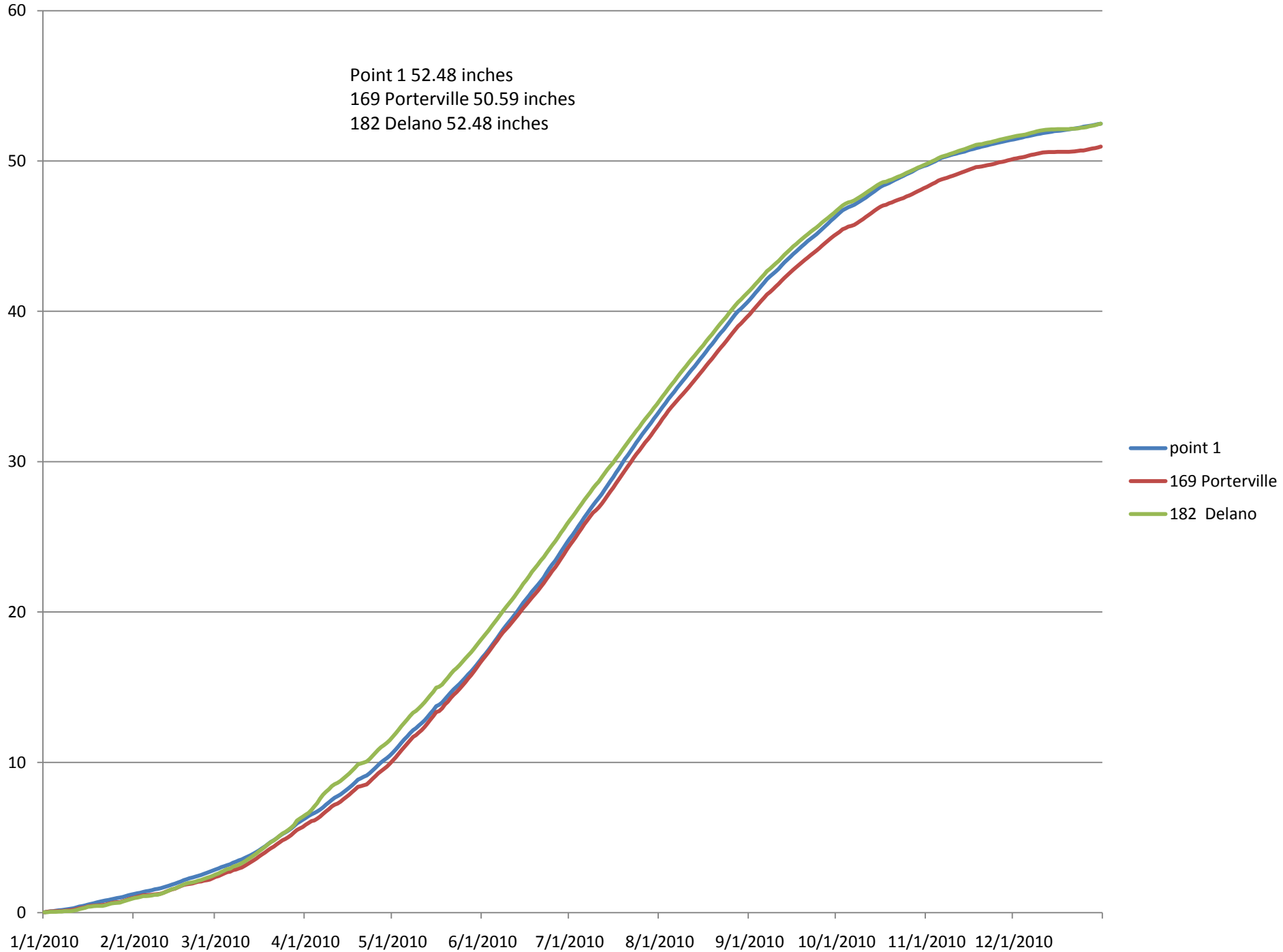
Point #3 - (35.2170, -119.0033)

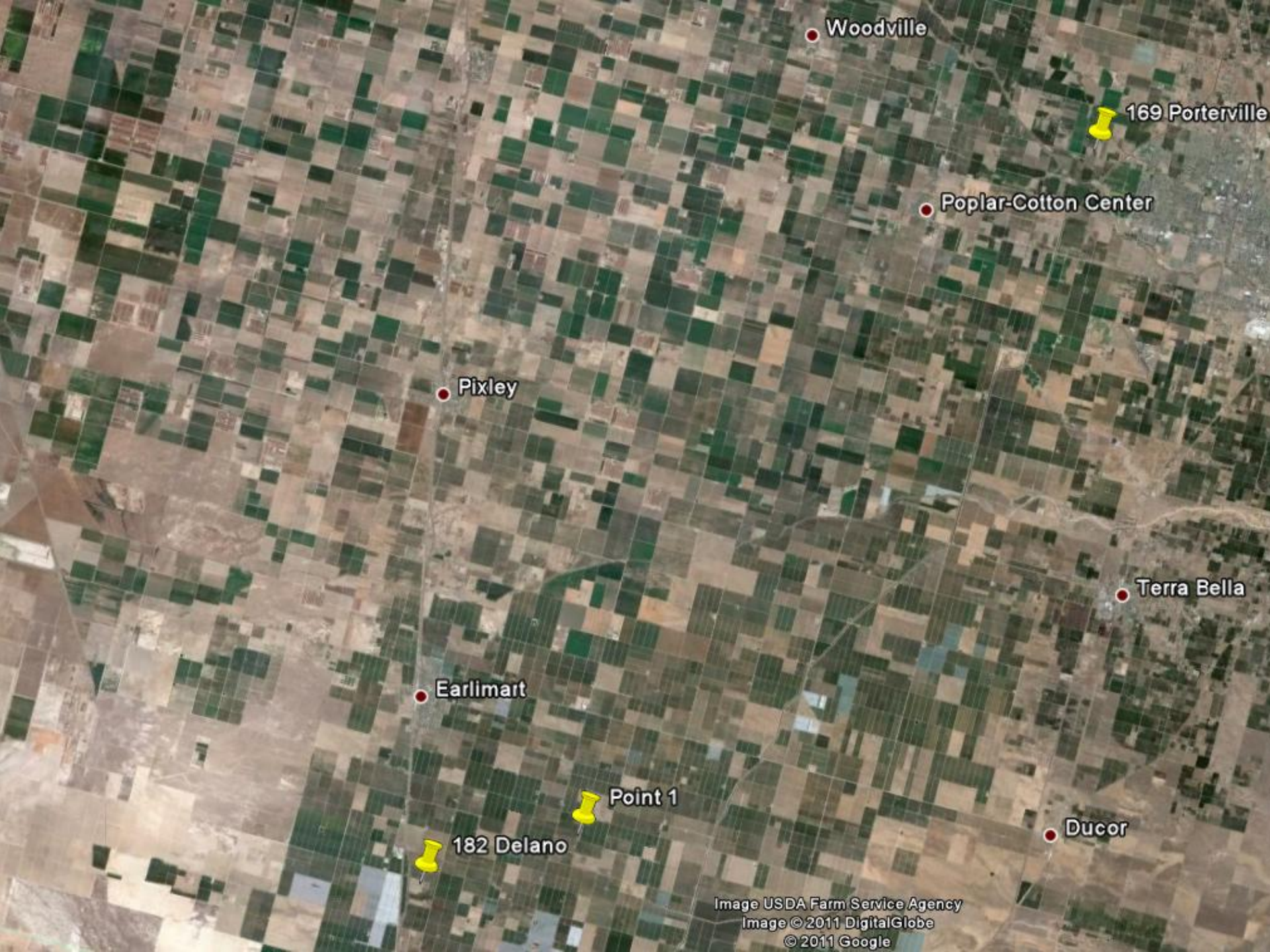
Date	ETo (in/day)	Rs (Ly/day)
07/14/2010	0.26	690.65
07/15/2010	0.27	688.84
07/16/2010	0.21	409.64
Totals/Avgs	0.75	598.38

Point #4 - (36.7832, -120.7455)

Date	ETo (in/day)	Rs (Ly/day)
07/14/2010	0.28	705.06
07/15/2010	0.29	668.94
07/16/2010	0.30	654.09
Totals/Avgs	0.87	676.03

Point	Lat	Long	Date	CIMIS ETo (in) (in/day)	Sol Rad (Ly/day)
1	35.86	-119.21	7/14/2010	0.28	690.77
1	35.86	-119.21	7/15/2010	0.3	686.21
1	35.86	-119.21	7/16/2010	0.26	564.07
2	35.66	-120.58	7/14/2010	0.27	720.89
2	35.66	-120.58	7/15/2010	0.29	713.69
2	35.66	-120.58	7/16/2010	0.29	703.92
3	35.22	-119	7/14/2010	0.26	690.65
3	35.22	-119	7/15/2010	0.27	688.84
3	35.22	-119	7/16/2010	0.21	409.64
4	36.78	-120.75	7/14/2010	0.28	705.06
4	36.78	-120.75	7/15/2010	0.29	668.94
4	36.78	-120.75	7/16/2010	0.3	654.09
5	37.71	-121.14	7/14/2010	0.27	689.35
5	37.71	-121.14	7/15/2010	0.29	688.81
5	37.71	-121.14	7/16/2010	0.29	681.51
6	36.6	-119.91	7/14/2010	0.3	688.66
6	36.6	-119.91	7/15/2010	0.32	687.96
6	36.6	-119.91	7/16/2010	0.32	681.71
7	37.24	-120.26	7/14/2010	0.29	684.39
7	37.24	-120.26	7/15/2010	0.3	690.48
7	37.24	-120.26	7/16/2010	0.31	652.22





Woodville

169 Porterville

Poplar-Cotton Center

Pixley

Terra Bella

Earlimart

Ducor

Point 1

182 Delano

Image USDA Farm Service Agency

Image © 2011 DigitalGlobe

© 2011 Google

My CIMIS

Windows Internet Explorer

http://www.cimis.water.ca.gov/cimis/myCimis.jsp

Google

Favorites Tools Help

Search Share Check Translate AutoFill

My CIMIS]

CALIFORNIA THE GOLDEN STATE

CALIFORNIA HOMEPAGE GOVERNOR'S HOMEPAGE

CIMIS

CALIFORNIA IRRIGATION MANAGEMENT INFORMATION SYSTEM
DEPARTMENT OF WATER RESOURCES
OFFICE OF WATER USE EFFICIENCY

WELCOME INFO CENTER CIMIS DATA RESOURCE CENTER **MY CIMIS** SPATIAL CIMIS

Account Management

Logon
Registration

My CIMIS

My CIMIS provides simple single-click reporting. You can customize your own profile including selecting report preferences, develop custom reports, and create station lists preferences. My CIMIS will keep track of this profile for your next visit.



If you have not yet created a user account, click on the Registration link below and create an account by completing a brief registration form. After creating a CIMIS user account, you are ready to enjoy the ease and convenience of My CIMIS. Registered CIMIS users can simply click on Logon and enter User Name and Password. Once logged in, users can manage their user account, including changing the password.

Account Management

Logon The **Logon** page allows you to access the CIMIS database by entering your user name and password. You will be disconnected from the CIMIS database if there is no activity for 10 consecutive minutes.

Registration **Registration** allows users to create their own user names and passwords. Personal information of members will not be compromised in any way and is used for statistical purposes only. You can edit your Registration and change your password in the My CIMIS Tab.

Back to Top About Us Contact Us Site Map

[Conditions of Use](#) | [Privacy Policy](#) | [Comments or Suggestions?](#)

© 2009 State of California.

CALIFORNIA IRRIGATION MANAGEMENT INFORMATION SYSTEM
DEPARTMENT OF WATER RESOURCES
OFFICE OF WATER USE EFFICIENCY



- WELCOME
- INFO CENTER
- CIMIS DATA
- RESOURCE CENTER
- My CIMIS**
- SPATIAL CIMIS

- Welcome Back DWR-SAN
- My Reports
- My Station Lists
- My Preferences
- Account Management
- Log Off
- Edit Registration
- Change Password

My Reports

The **My Reports** allows you to perform single-click reporting, select report preferences, and prepare custom reports. There are three station lists (List 1, List 2, and List 3) and each list can hold up to a maximum of 10 stations. A list must contain at least one station before executing reports from this page. You can add and remove station(s) from the list by clicking on Create/Change Station Lists and clicking on Remove. Once a list has been created, clicking on a station number will provide detailed information about the station.

After specifying Station Lists, you can generate a report in any one of the report options listed under Quick Reports by clicking on the list number to the right (list 1, list 2, or list 3). These reports are generated using the Preferences listed at the bottom of the Station Lists. Preferences for Quick Reports can be changed by clicking on Change Preferences at the bottom of the Station Lists. Custom reports allows the user to select the options (climatic parameters), to be reported.

Quick Reports

Report Options	list 1 list 2 list 3
Standard Hourly (using prefs)	list 1 list 2 list 3
Standard Daily (using prefs)	list 1 list 2 list 3
Standard Daily ETo Variance (using prefs)	list 1 list 2 list 3
Standard Monthly (using prefs)	list 1 list 2 list 3
Standard Monthly Average ETo (using prefs)	list 1 list 2 list 3

My Custom Reports

Report Options	list 1 list 2 list 3 customize
sewert	list 1 list 2 list 3 customize
sewert2	list 1 list 2 list 3 customize
sewert3	list 1 list 2 list 3 customize
sewert4	list 1 list 2 list 3 customize

Tip: Custom reports allow you to name your own very specific report styles. You can choose the report type, unit, date range, and even the fields that will appear in your report. Property values specified as "report preferences" will not be used in custom reports.



My Station Lists

List 1	List 2	List 3
056	002	005
071	007	015
092	033	021
148	039	054
155	080	125
161	086	138
166	105	146
167	124	169
168	142	182
--	145	190

[Create/Change Station Lists](#) ▶

My Preferences

Name	Value
Zip Codes	95616
Units	Metric
Output	WEB Report
Hourly Report	7 Days
Daily Report	7 Days
Monthly Report	12 Months

[Change Preferences](#) ▶

Account Management

- [Log Off](#)
- [Edit Registration](#)
- [Change Password](#)



Manage Station Lists

[My Reports](#)

List 1	List 2	List 3
056 remove	002 remove	005 remove
071 remove	007 remove	015 remove
092 remove	033 remove	021 remove
148 remove	039 remove	054 remove
155 remove	080 remove	125 remove
161 remove	086 remove	138 remove
166 remove	105 remove	146 remove
167 remove	124 remove	169 remove
168 remove	142 remove	182 remove
--	145 remove	190 remove

To place stations under any of the three lists, simply click the "Add" option for the desired "list" and "station". Clicking the Add option will immediately add the selected station to the appropriate list above. Stations from the list above may be removed by clicking the "Remove" option.

* Station is Currently Inactive

Station	Name	County	Add to List 1	Add to List 2	Add to List 3
001 *	Fresno/F.S.U. USDA	Fresno	(add 001)	--	--
002	FivePoints	Fresno	(add 002)	(included)	--
003 *	Beach /Santa Cruz CO	Santa Cruz	(add 003)	--	--
004 *	Webb /Santa Cruz CO	Santa Cruz	(add 004)	--	--
005	Shafter/USDA	Kern	(add 005)	--	(included)
006	Davis	Yolo	(add 006)	--	--
007	Firebaugh/Telles	Fresno	(add 007)	(included)	--
008	Gerber	Tehama	(add 008)	--	--
009 *	Lamont	Kern	(add 009)	--	--
010 *	Bakersfield/Greenlee	Kern	(add 010)	--	--
011 *	Bakersfield/Bonanza	Kern	(add 011)	--	--
012	Durham	Butte	(add 012)	--	--
013	Camino	El Dorado	(add 013)	--	--
014 *	Orland	Glenn	(add 014)	--	--
015	Stratford	Kings	(add 015)	--	(included)
016 *	San Juan	Monterey	(add 016)	--	--
017 *	El Centro	Imperial	(add 017)	--	--
018 *	Westmorland	Imperial	(add 018)	--	--
019	Castroville	Monterey	(add 019)	--	--
020 *	Corcoran	Kings	(add 020)	--	--
021	Kettleman	Kings	(add 021)	--	(included)
022 *	Caruthers	Kings	(add 022)	--	--
023 *	King City	Monterey	(add 023)	--	--

CALIFORNIA IRRIGATION MANAGEMENT INFORMATION SYSTEM
DEPARTMENT OF WATER RESOURCES
OFFICE OF WATER USE EFFICIENCY



- WELCOME
- INFO CENTER
- CIMIS DATA
- RESOURCE CENTER
- My CIMIS**
- SPATIAL CIMIS

- Welcome Back DWR-SAN
- My Reports
- My Station Lists
- My Preferences
- Account Management
- Log Off
- Edit Registration
- Change Password

My Reports

The **My Reports** allows you to perform single-click reporting, select report preferences, and prepare custom reports. There are three station lists (List 1, List 2, and List 3) and each list can hold up to a maximum of 10 stations. A list must contain at least one station before executing reports from this page. You can add and remove station(s) from the list by clicking on Create/Change Station Lists and clicking on Remove. Once a list has been created, clicking on a station number will provide detailed information about the station.

After specifying Station Lists, you can generate a report in any one of the report options listed under Quick Reports by clicking on the list number to the right (list 1, list 2, or list 3). These reports are generated using the Preferences listed at the bottom of the Station Lists. Preferences for Quick Reports can be changed by clicking on Change Preferences at the bottom of the Station Lists. Custom reports allows the user to select the options (climatic parameters), to be reported.

Quick Reports

Report Options	list 1 list 2 list 3
Standard Hourly (using prefs)	list 1 list 2 list 3
Standard Daily (using prefs)	list 1 list 2 list 3
Standard Daily ETo Variance (using prefs)	list 1 list 2 list 3
Standard Monthly (using prefs)	list 1 list 2 list 3
Standard Monthly Average ETo (using prefs)	list 1 list 2 list 3

My Station Lists

	List 1	List 2	List 3
	056	002	005
	071	007	015
	092	033	021
	148	039	054
	155	080	125
	161	086	138
	166	105	146
	167	124	169
	168	142	182
	--	145	190

My Custom Reports

Report Options	list 1 list 2 list 3 customize
sewert	list 1 list 2 list 3 customize
sewert2	list 1 list 2 list 3 customize
sewert3	list 1 list 2 list 3 customize
sewert4	list 1 list 2 list 3 customize

[Create/Change Station Lists](#)

Tip: Custom reports allow you to name your own very specific report styles. You can choose the report type, unit, date range, and even the fields that will appear in your report. Property values specified as "report preferences" will not be used in custom reports.



My Preferences

Name	Value
Zip Codes	95616
Units	Metric
Output	WEB Report
Hourly Report	7 Days
Daily Report	7 Days
Monthly Report	12 Months

[Change Preferences](#)

- Welcome Back DWR-SAN
- My Reports
- My Station Lists
- My Preferences
- Account Management
- Log Off
- Edit Registration
- Change Password

My Preferences

My Preferences helps you manage a set of reporting defaults. CIMIS remembers these reporting preferences and applies them to My CIMIS-Quick Reports or when executing reports from the Data Tab. Reporting preferences may be changed for any one report executed under the Data tab though afterwards they will default back to the preferences set in My CIMIS.

Zip Codes

The Zip Code preference keeps track of zip codes that interest you. Reports on the data tab will automatically use these zip codes if you check the "Zip Code" checkbox.

Zip Codes: (example: 95670, 95823)

Units

The Unit preference identifies what standard of measurement you prefer to see data in. For instance, temperature can be show as degrees Fahrenheit (English) or Celsius (Metric).

Unit:

Reporting Method

The Output Method preference identifies how you wish to see reports rendered.

Output Method:

- Web Report
- PDF
- CSV with Headers
- XML

Date Ranges

The Date Range preferences identify the number of days or months since yesterday to report on. You may specify the number of days for Hourly and Daily reports and the number of months for the Monthly report.

Hourly Report Duration: (days since yesterday)

Daily Report Duration: (days since yesterday)

Monthly Report Duration: (months since yesterday)

CALIFORNIA IRRIGATION MANAGEMENT INFORMATION SYSTEM
DEPARTMENT OF WATER RESOURCES
OFFICE OF WATER USE EFFICIENCY



- WELCOME
- INFO CENTER
- CIMIS DATA
- RESOURCE CENTER
- My CIMIS**
- SPATIAL CIMIS

- Welcome Back DWR-SAN
- My Reports
- My Station Lists
- My Preferences
- Account Management
- Log Off
- Edit Registration
- Change Password

My Reports

The **My Reports** allows you to perform single-click reporting, select report preferences, and prepare custom reports. There are three station lists (List 1, List 2, and List 3) and each list can hold up to a maximum of 10 stations. A list must contain at least one station before executing reports from this page. You can add and remove station(s) from the list by clicking on Create/Change Station Lists and clicking on Remove. Once a list has been created, clicking on a station number will provide detailed information about the station.

After specifying Station Lists, you can generate a report in any one of the report options listed under Quick Reports by clicking on the list number to the right (list 1, list 2, or list 3). These reports are generated using the Preferences listed at the bottom of the Station Lists. Preferences for Quick Reports can be changed by clicking on Change Preferences at the bottom of the Station Lists. Custom reports allows the user to select the options (climatic parameters), to be reported.

Quick Reports

Report Options	
Standard Hourly (using prefs)	list 1 list 2 list 3
Standard Daily (using prefs)	list 1 list 2 list 3
Standard Daily ETo Variance (using prefs)	list 1 list 2 list 3
Standard Monthly (using prefs)	list 1 list 2 list 3
Standard Monthly Average ETo (using prefs)	list 1 list 2 list 3

My Station Lists

	List 1	List 2	List 3
	056	002	005
	071	007	015
	092	033	021
	148	039	054
	155	080	125
	161	086	138
	166	105	146
	167	124	169
	168	142	182
	--	145	190

[Create/Change Station Lists](#) ▶

My Custom Reports

Report Options	
sewert	list 1 list 2 list 3 customize
sewert2	list 1 list 2 list 3 customize
sewert3	list 1 list 2 list 3 customize
sewert4	list 1 list 2 list 3 customize

Tip: Custom reports allow you to name your own very specific report styles. You can choose the report type, unit, date range, and even the fields that will appear in your report. Property values specified as "report preferences" will not be used in custom reports.



My Preferences

Name	Value
Zip Codes	95616
Units	Metric
Output	WEB Report
Hourly Report	7 Days
Daily Report	7 Days
Monthly Report	12 Months

[Change Preferences](#) ▶

- My Reports
- My Station Lists
- My Preferences
- Account Management**
- Log Off
- Edit Registration
- Change Password

Custom Report

Custom Reports allow you to define your very own report. Give your report a name and customize the report by specifying your preferences. You can choose the type of report and even the sensors that will appear in the report. You must check at least one sensor type.

Specify Report Parameters

Report Name:

Report Type:
 Hourly
 Daily
 Monthly

Unit:

Output Method:
 Web Report
 PDF
 CSV with Headers
 XML

Date Range (in Days):

Select Sensor Types

- | | |
|--|--|
| <input checked="" type="checkbox"/> Solar Radiation | <input checked="" type="checkbox"/> Wind Rose (Daily Only) |
| <input checked="" type="checkbox"/> Net Radiation | <input checked="" type="checkbox"/> Precipitation |
| <input checked="" type="checkbox"/> Soil Temperature | <input checked="" type="checkbox"/> Relative Humidity |
| <input checked="" type="checkbox"/> Air Temperature | <input checked="" type="checkbox"/> Dew Point |
| <input checked="" type="checkbox"/> Vapor Pressure | <input checked="" type="checkbox"/> CIMIS ETo |
| <input checked="" type="checkbox"/> Wind Speed | <input type="checkbox"/> PM ETo |
| <input type="checkbox"/> * Misc. Wind Factors | <input type="checkbox"/> PM ETr |

* Misc. Wind Factors for Daily and Monthly Reports include: wind cubed and wind run
Hourly Reports include: resultant wind, wind direction, wind direction standard deviation, and wind gust.

Schedule to be Emailed

* Requirements: You must have a valid email address in your registration. XML and CSV are the only reports currently available for scheduling. Scheduled reports are generated and emailed about 8 AM, for the prior day's data back to the number of days in the "Date Range", so you may want to adjust the "Date Range" accordingly. To unregister from this scheduled service return to this page and deselect this option.

Schedule this Report Station List

Frequency (Default: Weekly/Monday):

- Daily Report Daily frequency schedules a report to be emailed daily.
- Weekly Report Weekly frequency schedules a report to be emailed on the day of the week chosen.
- Sunday
- Monday
- Tuesday
- Wednesday
- Thursday
- Friday
- Saturday
- Monthly Report Monthly frequency schedules a report to be emailed on the 2nd of the month, to make sure all data is in the database. * If the "Date Range" is greater than 29 days, the report will end on the last day of the previous month.
- Annual Report Annual frequency schedules a report to be emailed on the 2nd of the year, to make sure all data is in the database. * If the "Date Range" is greater than 29 days, the report will end on the last day of the previous year.

Delete This Custom Report

export1homecimisCimisMailoutputDWRSJD_DAY_ENG_12 - Microsoft Excel

Home Insert Page Layout Formulas Data Review View ASAP Utilities Acrobat

Clipboard Font Alignment Number Conditional Formatting Styles Cells Editing

Calibri 11 A A

General \$ % .00 >0

Normal Bad Good Neutral Calculation Check Cell

AutoSum Fill Clear Sort & Find & Filter Select

A2	A	B	C	D	E	F	G	H	I	J	K	L	M	N	O	P	Q	R	S	T	U	V	W	X	Y
1	Stn ID	Name	Date	qc	Sol Rad(Ly)qc	Net Rad(L)qc	Max Soil T qc	Min Soil T qc	Avg Soil T qc	Max Air Tr qc	Min Air Tr qc	Avg Air Tn qc	Max Vap F qc	Min Vap P qc											
2	2	FivePoint	4/25/2011		480	251	62.8	60.6	61.7	74	47.5	59.7	13	7											
3	2	FivePoint	4/26/2011		612	319	62.2	60.4	61.2	72.4	43.1	58.5	8.8	4.1											
4	2	FivePoint	4/27/2011		607	319	62.2	59.4	60.8	76.3	40.2	59.6	9.6	4.2											
5	2	FivePoint	4/28/2011		603	323	63.2	60.1	61.6	77	48.2	61.7	14.1	6											
6	2	FivePoint	4/29/2011		621 Y	317	62.5	60.2	61	69.6	43.2	57.2 Y	6.7 Y	2.6 Y											
7	2	FivePoint	4/30/2011		631 Y	324	61	58.8	59.9	73.4	44.1	58.6	8.2	3.4 Y											
8	2	FivePoint	5/1/2011		641 Y	326	61.4 Y	58.5 Y	59.9	78.5 Y	38.5	61.3	8.5	3.6 Y											
9	7	Firebaugh	4/25/2011		446	230	65.3	61.3	63.2	73.7	48.5	59.8	15.4	7.2											
10	7	Firebaugh	4/26/2011		650	333	64.9	60.5	62.7	71.3	42.4	57.7	9.4	5.6											
11	7	Firebaugh	4/27/2011		649	331	66.1	60.3	63	76.8	44.1	61.5	10.4	4.2											
12	7	Firebaugh	4/28/2011		644	340	66.6	61.6	64	76.3	48.7	62	14	6.1											
13	7	Firebaugh	4/29/2011		674	331	64.5	60.2	62	69.3	46.1	57.8	7.6	3.3											
14	7	Firebaugh	4/30/2011		672	334	63.7	58.6	61	73.5	47.2	60.2	7.9	4											
15	7	Firebaugh	5/1/2011		679	337	64.7 Y	58.5 Y	61.5	79.6	39.2	61.9	9.5	4.3											
16	39	Parlier	4/25/2011		486	257	72.9	61.1	66.4	73.1	50.8	61.5	13.5	8.5											
17	39	Parlier	4/26/2011		641	334	73.5	60.4	66.2	71.5	48.3	59.6	10.8	5.8											
18	39	Parlier	4/27/2011		637	334	75.4	59.5	66.7	76.5	42.8	60.4	10.6	6.1											
19	39	Parlier	4/28/2011		628	335	76.5	61.3	68.3	77.6	45.9	63.3	12.5	6.9											
20	39	Parlier	4/29/2011		665	336	74.9	61.5	67.4	70.1	44.8	56.5	9.5	4.4											
21	39	Parlier	4/30/2011		660	337	74.9	59.7	66.6	72.6	39.5	56.8	10.3	5.1											
22	39	Parlier	5/1/2011		663	338	76.6	60.3	67.6	78.1	44	61.4	11	4.5											
23	80	Fresno Sta	4/25/2011		479	254	62.8	60.2	61.4	72.2	51.1	60.1	13.1	8.2											
24	80	Fresno Sta	4/26/2011 R		676 R	333	63.1	59.9	61.5	70.8	47.2	58.2	10.7	4.9											
25	80	Fresno Sta	4/27/2011 R		672 R	335	62.7	59.2	61	75.5	42.8	60	10.6	4.1											
26	80	Fresno Sta	4/28/2011		663	338	63.1	59.2	61.1	76.5	45.7	61.8	12.5	6.4											
27	80	Fresno Sta	4/29/2011 R		695 R	330	62.7	59.8	61.3	69.7	43.3	56.3	8.5	3.5 Y											
28	80	Fresno Sta	4/30/2011 R		690 R	337	62	58.4	60.2	72	37.1	57.2	8.3	3.8											
29	80	Fresno Sta	5/1/2011 R		691 R	339	61.7	58.1 Y	60	78.8	41.6	61.1	13.1 Y	4.2 Y											
30	86	Lindcove	4/25/2011		472	247	69.1	66.7	67.9	74	46	61	13.9	8.8											
31	86	Lindcove	4/26/2011		620	336	69.2	67	68.2	72.4	47.3	57.8	12.3	6.7											
32	86	Lindcove	4/27/2011		624	331	69.4	66.2	67.9	76.7	41.9	59.9	13	8											

sewert@water.ca.gov

Staff] - Windows Internet Explorer

http://www.cimis.water.ca.gov/cimis/welcomeStaff.jsp

Favorites Tools Help

Search + Share Check Translate AutoFill

5 - [CIMIS Staff]

Sign In Page Tools

CALIFORNIA THE GOLDEN STATE CALIFORNIA HOME PAGE GOVERNOR'S HOME PAGE

CIMIS

CALIFORNIA IRRIGATION MANAGEMENT INFORMATION SYSTEM
DEPARTMENT OF WATER RESOURCES
OFFICE OF WATER USE EFFICIENCY

WELCOME INFO CENTER CIMIS DATA RESOURCE CENTER MY CIMIS SPATIAL CIMIS

General
Events
System News
FAQs
CIMIS Staff

Upcoming Events
New Feature - Email Scheduler
Non-ideal site study update
Software and Hardware Improvements

Current System News
New station in the Sierra Foothills, Diamond Springs #228.
New Sierra Foothills station, Plymouth #227
Hastings Tract Station #122 is now Hastings Tract East #212.
Station #123 Suisun Valley Removed

Sample FAQ
What is CIMIS?
How does CIMIS work?
Can I get CIMIS data

CIMIS Staff

You may [Email Us](#) at CIMIS headquarters in Sacramento.

Northern Region Office
[Mark Rivera](#)
2440 Main Street
Red Bluff CA 96080
Work: 530-529-7301
Fax: 530-529-7322

Northern Region Office
[Michael Serna](#)
2440 Main Street
Red Bluff CA 96080
Work: 530-529-7346
Fax: 530-529-7322

North Central Region Office
[Jan Carey](#)
3500 Industrial Blvd
West Sacramento CA 95691
Work: 916-376-9630
Fax: 916-376-9676

South Central Region Office
[Steve Ewert](#)
3374 East Shields Avenue
Fresno CA 93726
Work: 559-230-3334
Fax: 559-230-3301

South Central Region Office
[Neil Rambo](#)

Irrigate like a Pro



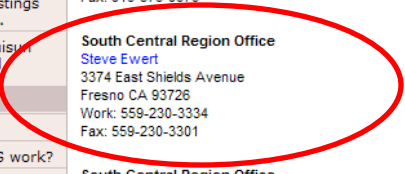
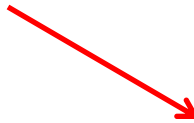
CIMIS System Status:
The normal Maintenance window is:
Wednesday 02:00 - 04:00 PM

REGISTER
instant weather data access

 Department of Water Resources

 Office of Water Use Efficiency

 Required for PDF reports





Irrigation Management Tool And More!

What is CIMIS?

CIMIS is a network of automated and computerized weather stations located at key agricultural and urban areas of the state. The stations collect climatological data and transmit it to a main computer. After quality control of the data, irrigated grass water requirements or a reference evapotranspiration is calculated for each station. The data then is available to the agricultural and urban water users for irrigation of agronomic crops, landscapes, golf courses, and parks.



- (1) Weather data (collected by weather stations) are automatically transmitted to a central computer located in Sacramento.
- (2) The weather data is analyzed and stored in a database server.
- (3) Weather data is made available over the internet.

Increase Energy and Water Use Efficiency!

Reference EvapoTranspiration (ET_o) Zones



For More Information: call 1-800-922-4647

Or Visit Us Online At: www.cimis.water.ca.gov