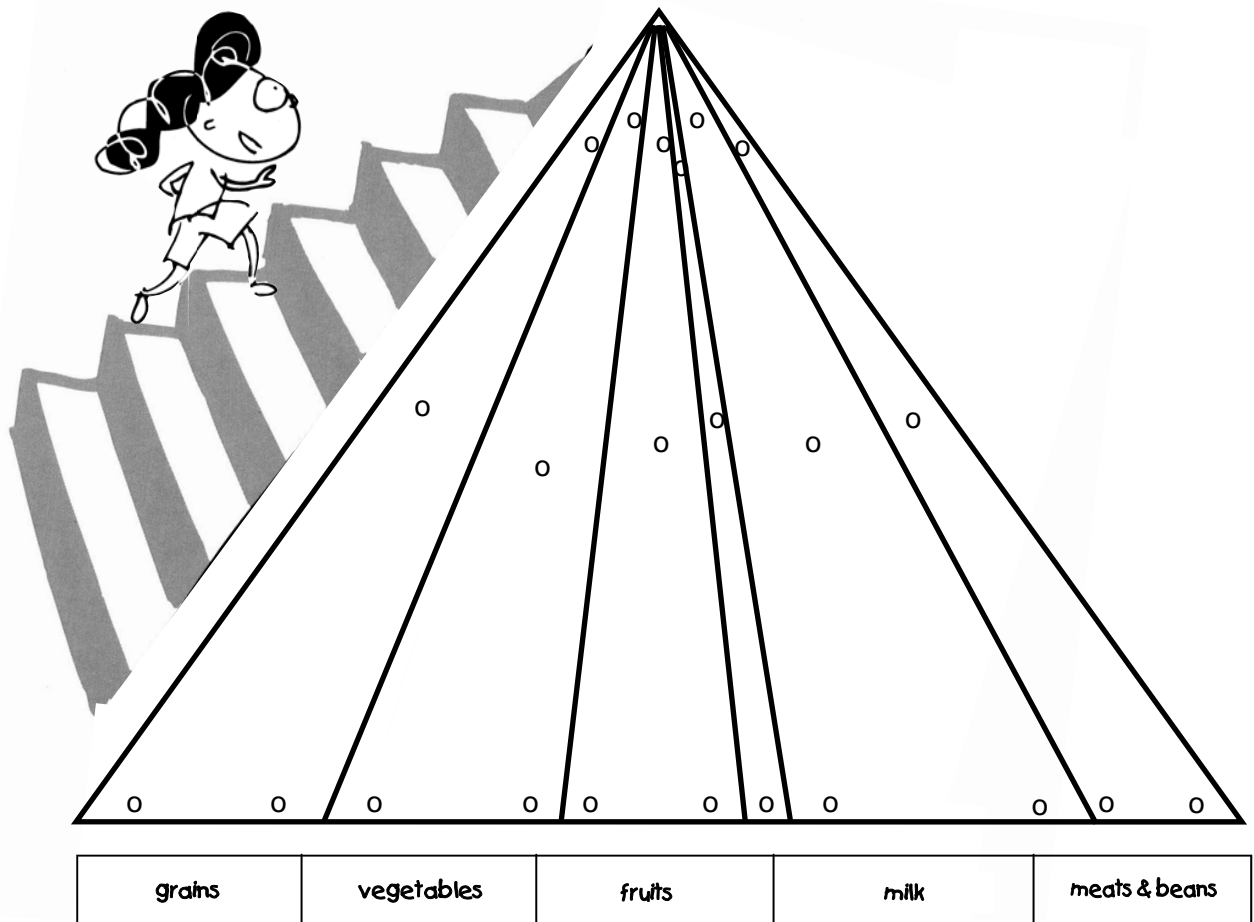
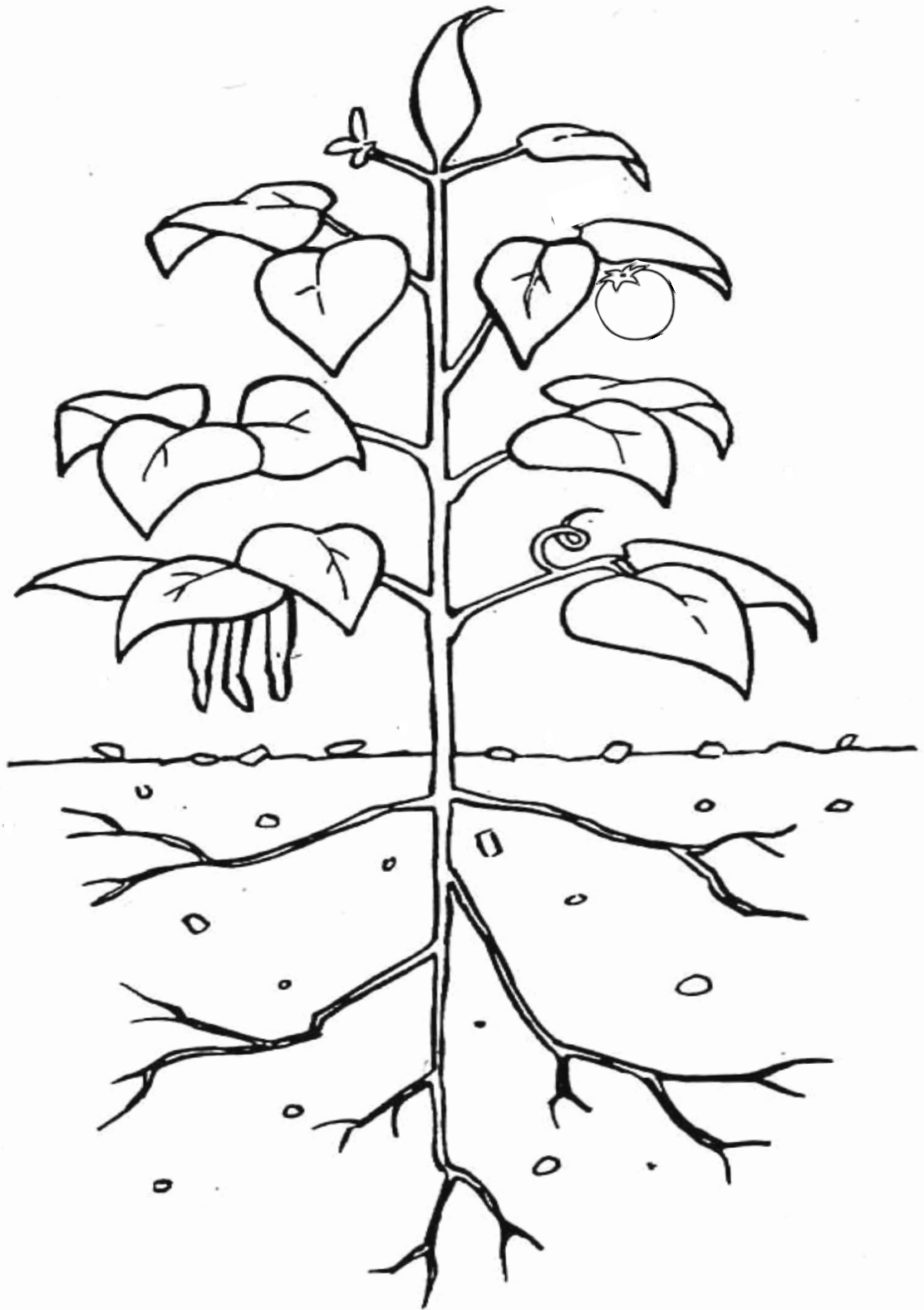


# Instructions for Constructing MyPyramid Puzzle

1. Enlarge the MyPyramid outline and draw on poster board.
2. Create and cut the color strips for each of the food groups and the oils category.
3. Place several hook and loop tape dots on each of the food group strips to attach to the board.
4. Place the corresponding dot sides on the poster board outline.
5. Place hook and loop tape dots on the food group models found on pages 18 to 20.
6. Arrange the corresponding dot sides on the food group strips.
7. Cut apart the words.
8. Create and cut the steps and girl for the side of MyPyramid.



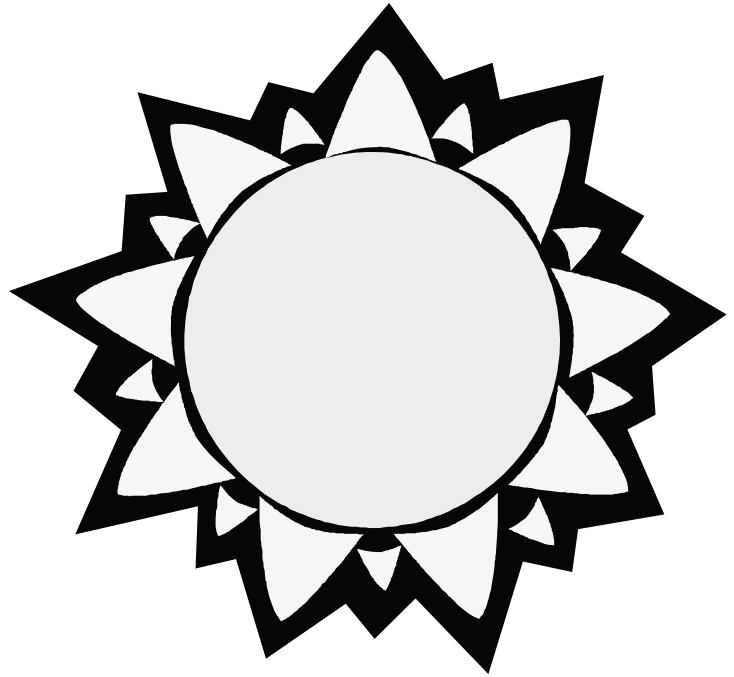
# Plant Parts Diagram



# Cutouts of soil, sun, water, and air



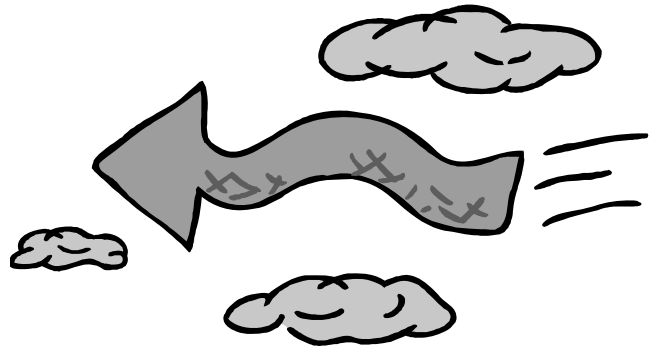
Soil



Sun



Water



Air