

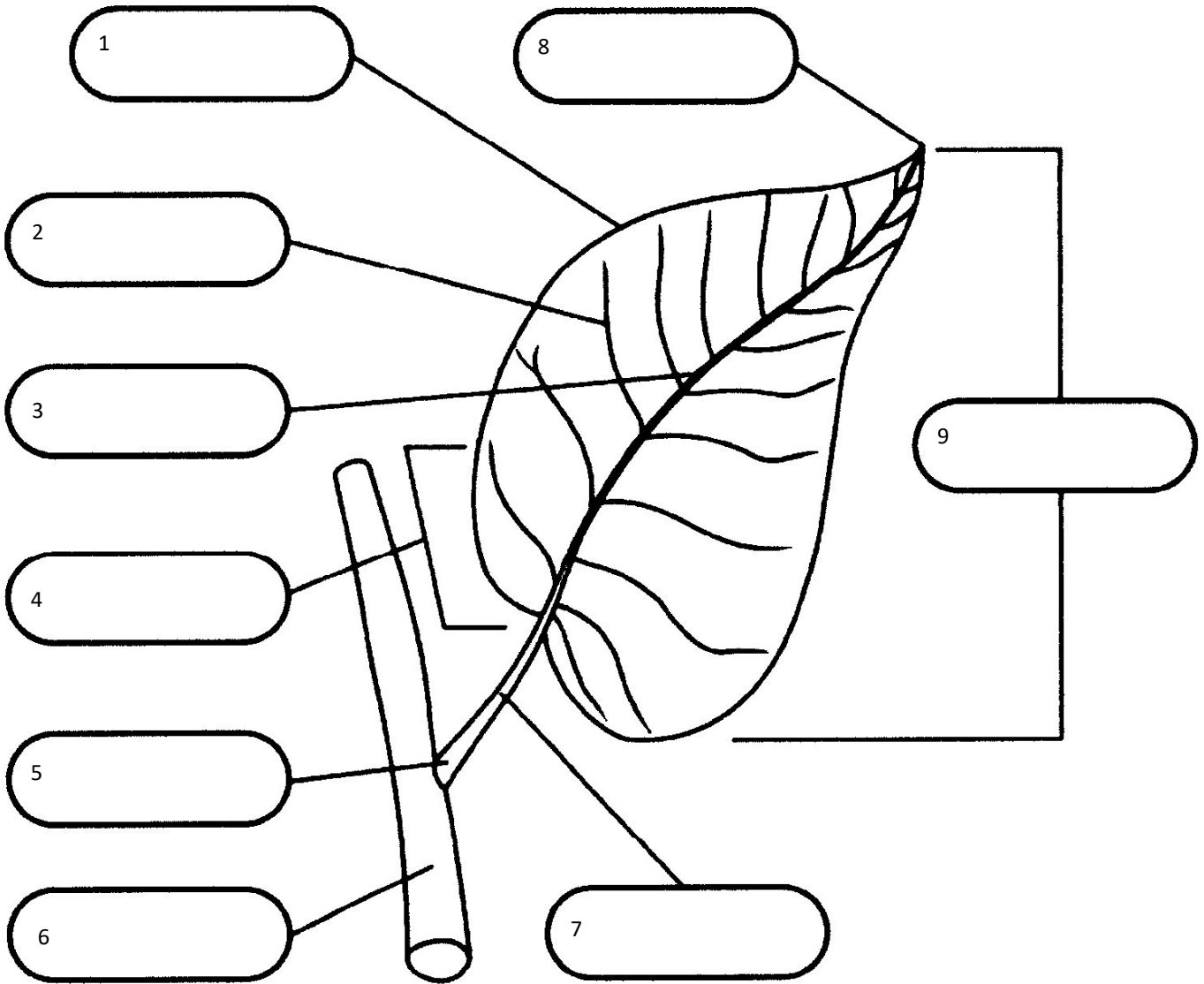
# Activity Book



**UNIVERSITY OF CALIFORNIA**  
Agriculture and Natural Resources

■ UC Master Gardener Program

# Label the Parts of a Simple Leaf



## Word Box

Leaf base

Axil

Stem

Petiole

Tip

Vein

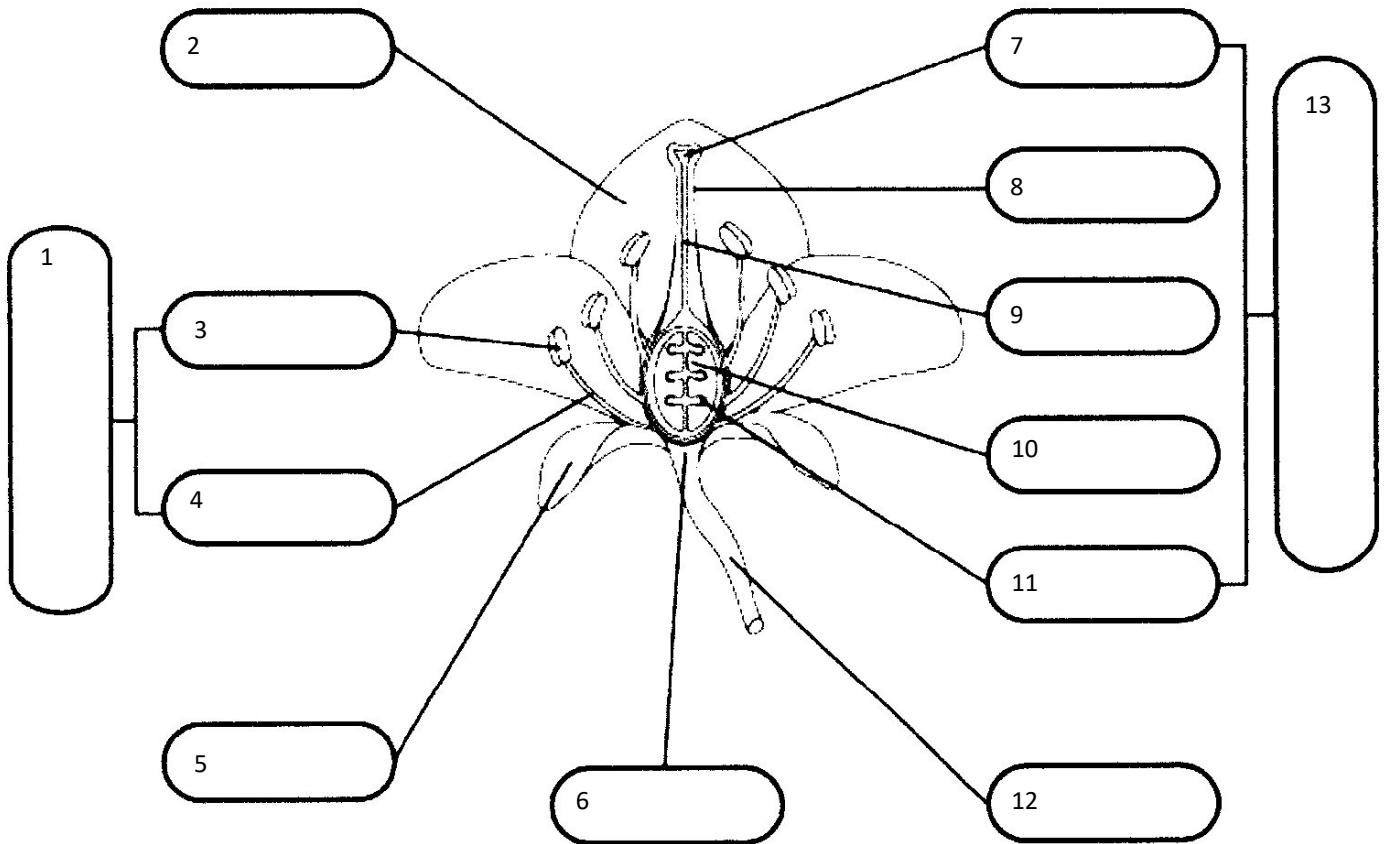
Leaf-blade

Margin

Midrib

1. Margin  
2. Vein  
3. Midrib  
4. Leaf Base  
5. Axil  
6. Stem  
7. Petiole  
8. Tip  
9. Leaf-Blade

# Label the Parts of a Flower



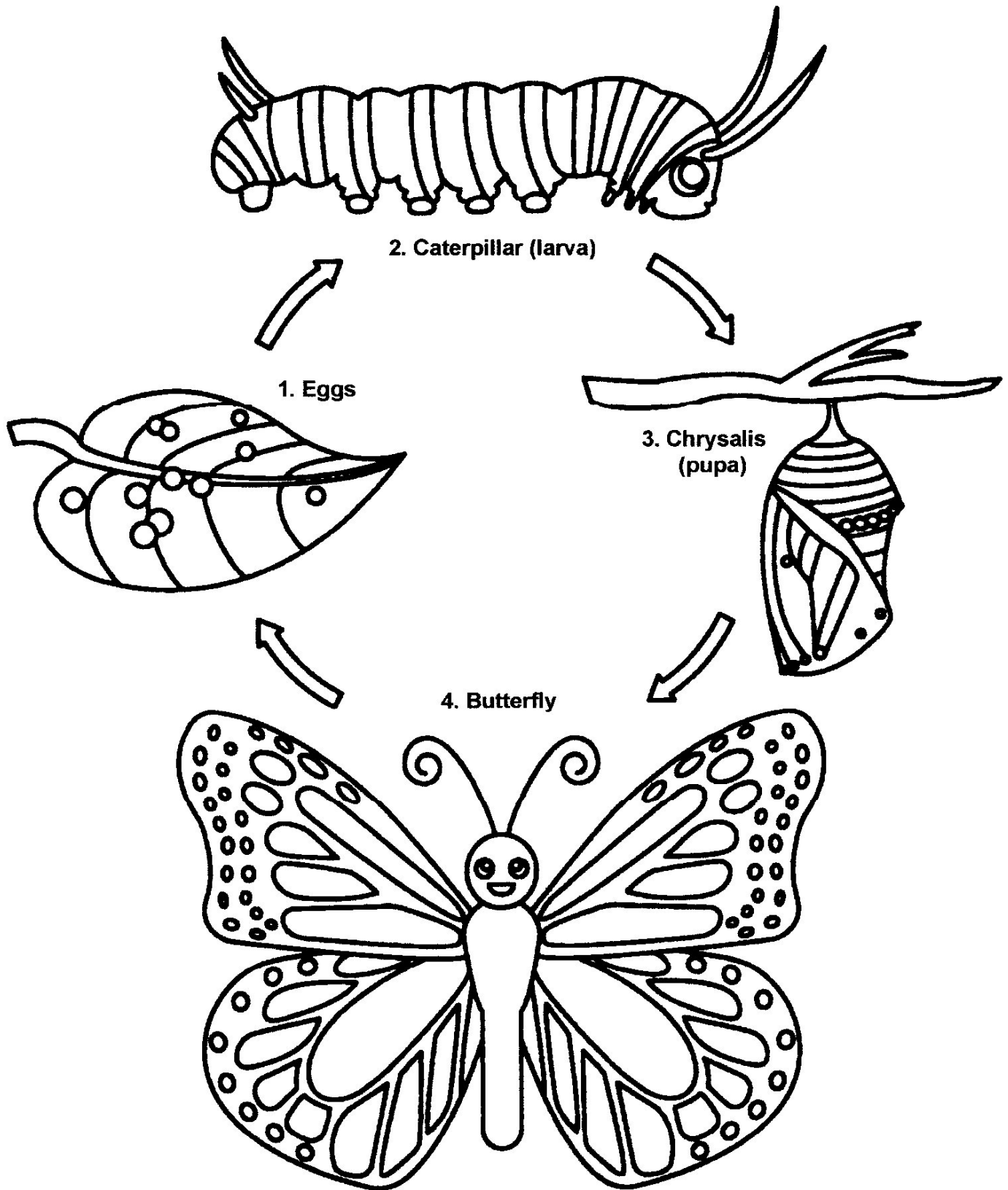
## Word Box

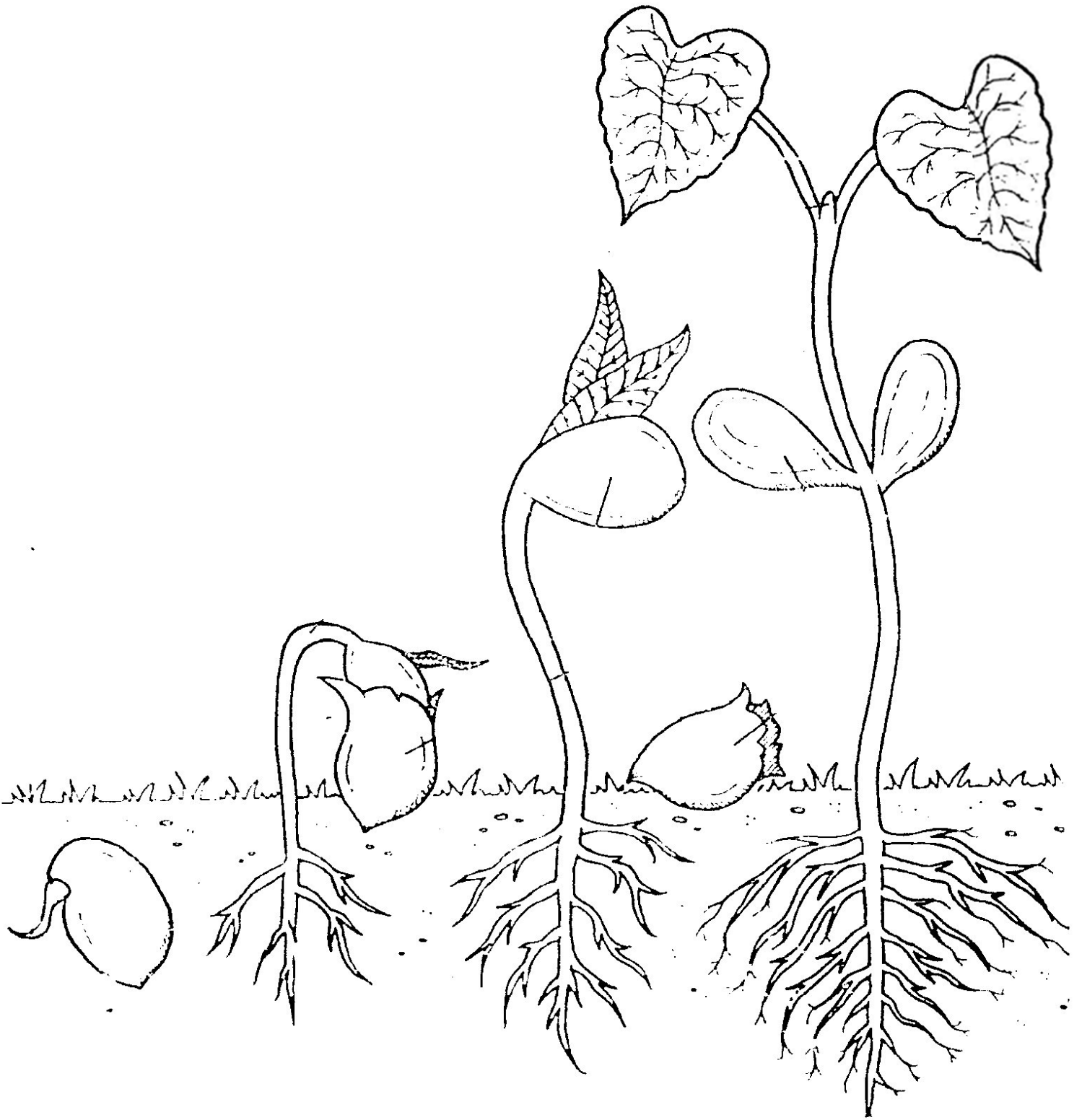
Sepal	Anther	Filament	Stamen
Stigma	Receptacle	Style	
Ovary	Petal	Ovule	
Carpel	Pollen tube	Stem	

1. Stamen  
2. Petal  
3. Anther  
4. Filament  
5. Sepal  
6. Receptacle  
7. Stigma  
8. Style  
9. Pollen tube  
10. Ovary  
11. Ovule  
12. Stem  
13. Carpel



# Butterfly Life Cycle

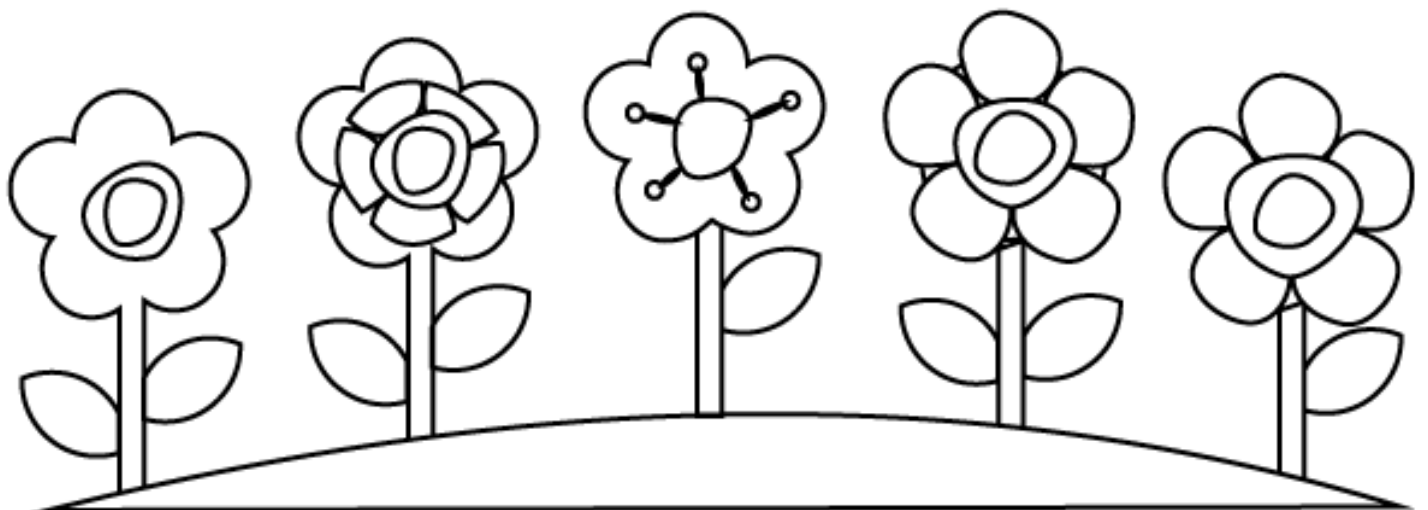




# Flower Garden

E N E N P D A R H I F A I O  
 G O N P E A Z A O M O H A A  
 D G T A O I A S N U X K H A  
 H A O N N S L U E M G L O Y  
 I R M S Y Y E C Y E L L S A  
 R D A Y C B A O S H O I N L  
 E P G I C E M R U T V D O I  
 T A R R L G U C C N E O W L  
 S N E A I O R H K A A F D L  
 A S B G R N I A L S I F R Y  
 G E R A N I U M E Y L A O D  
 D I I L O A E S O R H D P E  
 N D A I N U T E P H A A N A  
 S O A L L I U M C C D D D A

HONEYSUCKLE  
 CHRYSANTHEMUM  
 GERANIUM  
 AZALEA  
 BERGAMOT  
 SNAPDRAGON  
 CROCUS  
 FOXGLOVE  
 ASTER  
 LILLY  
 DAFFODILL  
 SNOWDROP  
 BEGONIA  
 PANSY  
 ALLIUM  
 PEONY  
 PETUNIA  
 ROSE  
 DAISY  
 DAHLIA



# Gardening

## Word Search Puzzle



- |             |        |              |
|-------------|--------|--------------|
| CLIPPERS    | RAKE   | SUNSHINE     |
| COMPOST     | SEEDS  | TILLER       |
| FLOWERS     | SHEARS | TROWEL       |
| GARDEN HOSE | SHOVEL | VEGETABLES   |
| GLOVES      | SNAILS | WATER        |
| HERBS       | SNIPS  | WATERING CAN |
| HOE         | SOIL   | WEEDS        |
| PLANTING    | SPADE  | WHEELBARROW  |





**UNIVERSITY OF CALIFORNIA**  
Agriculture and Natural Resources

UC Master Gardener Program

## UC Cooperative Extension Fresno County Master Gardeners



### Garden of the Sun Demonstration Garden

Open Monday, Wednesday and Friday  
9:00 a.m. - 12:00 p.m.

(Garden of the Sun will be closed on days with temperatures over 104°)

For upcoming events, gardening  
tips and much more, visit  
Our Master Gardener Website:



[ucanr.edu/sites/mgfresno/](http://ucanr.edu/sites/mgfresno/)

**ASK** a  
Master  
Gardener



**DO YOU HAVE QUESTIONS FOR  
A UC MASTER GARDENER?**

Email Us at: [mgfresno@ucanr.edu](mailto:mgfresno@ucanr.edu)

Or

Visit Our Master Gardener Helpline Website



[Facebook.com/FresnoMasterGardners/](https://www.facebook.com/FresnoMasterGardners/)



[instagram.com/fresnomastergardeners/](https://www.instagram.com/fresnomastergardeners/)



The University of California Division of Agriculture & Natural Resources (UCANR) is an equal opportunity provider. (Complete nondiscrimination policy statement can be found at <http://ucanr.edu/sites/anrstaff/files/215244.pdf>)

Inquiries regarding ANR's nondiscrimination policies may be directed to UCANR, Affirmative Action Compliance Officer, University of California, Agriculture and Natural Resources, 2801 Second Street, Davis, CA 95618, (530) 750-1343.