



**UC Marin Master Gardeners**  
 1682 Novato Blvd  
 Suite 150B  
 Novato, CA 94947  
 415-473-4204  
[ucmmg@plants.org](mailto:ucmmg@plants.org)

## UC Marin Master Gardeners - Vines



**Botanical Name:** *Akebia quinata*  
**Common Name:** Five-Leaf Akebia  
**Plant Type:** Vine  
**Sun:** Full, Half, Shade  
**Water:** Medium

This vine grows to 20' and bears small, pendant, dark burgundy purple flowers in spring and edible fruit in summer. The three flared, round petals are cup-shaped. It exhibits a delicate, woody look with dark green palmate leaves and oval leaflets. This deciduous plant should be grown in sun to part shade and should receive average watering.

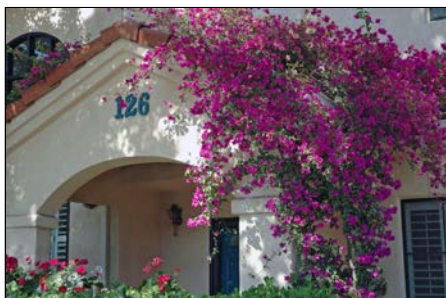
**Plant Height:** 6-12', 12-25'  
**Flower Color:** Purple  
**Attracts Wildlife:** n/a  
**Leaf Color:** Blue Green, Dark Green  
**Flower Season:** Spring



**Botanical Name:** *Aristolochia californica*  
**Common Name:** Dutchman's Pipe  
**Plant Type:** Vine  
**Sun:** Full, Half, Deep Shade  
**Water:** Medium, High

This deciduous climbing shrub or perennial herb produces yellow green flowers with purple lobes blooming in late spring and early summer. Heart-shaped, dark green, glossy leaves hide most the flowers. This plant tolerates full to part sun and needs well draining, moist, rich soil. Does not tolerate dry soil. Will completely cover a wall, pillar, structure and create deep shade.

**Plant Height:** 25-40'  
**Flower Color:** Green, Purple, Yellow, Multi-Colored  
**Attracts Wildlife:** n/a  
**Leaf Color:** Dark Green  
**Flower Season:** Spring, Summer



**Botanical Name:** *Bougainvillea* cvs.  
**Common Name:** Bougainvillea cultivars  
**Plant Type:** Shrub, Vine  
**Sun:** Full, Half  
**Water:** Low

The large amount of flamboyant color on this species creates a wonderful accent in a garden. Varieties can be in bush or vine form; colors vary. Once established, they tend to be carefree. All varieties are susceptible to frost damage. The 'Barbara Karst' variety blooms bright red in full sun; more crimson if in shade. It blooms early and long.

**Plant Height:** 25-40'  
**Flower Color:** Red  
**Attracts Wildlife:** n/a  
**Leaf Color:** Green  
**Flower Season:** Winter, Spring, Summer, Fall, Intermittent, Constant



**Botanical Name:** *Campsis radicans*

**Common Name:** Trumpet Creeper

**Plant Type:** Vine

**Sun:** Full, Half, Shade

**Water:** Low

Trumpet Creeper has 3"-4" tubular, orange-red flowers on a vigorous, deciduous 40' vine. In the summer, these flowers are borne in clusters. The vine clings to nearly any surface with small rootlets. It can become rampant and top-heavy, and benefits from occasional severe pruning. The flower color and shape co-evolved to accommodate hummingbirds.

**Plant Height:** 25-40'

**Flower Color:** Orange, Red

**Attracts Wildlife:**

**Leaf Color:**

**Flower Season:** Summer



**Botanical Name:** *Clematis large-flowered hybrids*

**Common Name:** Clematis, large-flowered hybrids

**Plant Type:** Vine

**Sun:** Full

**Water:** Medium, Extra in Summer

These climbing plants produce wonderful flowers, 4-10" in diameter and dark green foliage. Many different colors found, many multi-colored. The species is made up of hundreds of plants, and many of them are fragrant but not too strongly scented. Many varieties are deciduous, easily growing 10' tall, needing an arbor or obelisk or shrub to attach. Depending on variety, they may bloom in spring or summer, followed by seed head clusters, which can be used in flower arrangements. They do best in full sun with rich, moist, well draining soil. Prune after bloom period to manage shape and size, t ...

**Plant Height:** 6-12'

**Flower Color:** White

**Attracts Wildlife:** Butterflies

**Leaf Color:** Dark Green

**Flower Season:** Spring, Summer



**Botanical Name:** *Clytostoma callistegioides*

**Common Name:** Violet Trumpet Vine

**Plant Type:** Vine

**Sun:** Full, Half, Shade

**Water:** Medium

As an evergreen vine, this species grows under sun or partial shade. From the months of April to July, lavender trumpet-shaped flowers will appear on the vine.

**Plant Height:** 6-12'

**Flower Color:** Lavender

**Attracts Wildlife:** n/a

**Leaf Color:** Green

**Flower Season:** Spring, Summer, Fall, Intermittent



**Botanical Name:** *Distictis 'Rivers'*

**Common Name:** Royal Trumpet Vine, River's Trumpet

**Plant Type:** Vine

**Sun:** Full, Half

**Water:** Medium, Extra in Summer

The Royal Trumpet Vine is a very vigorous vine, climbing to 30' tall and wide. Rosy lavender flowers bloom in spring and summer. These blooms have yellow throats and fade to pink as they age. Its foliage is lighter green and glossier than the Blood Red Trumpet Vine, its closest relative, are leathery and have tendrils for climbing. The vine does best in full to part sun with regular watering and more during the summer. Flowers attract hummingbirds.

**Plant Height:** 25-40'

**Flower Color:** Lavender, Pink, Multi-Colored

**Attracts Wildlife:** Hummingbirds

**Leaf Color:** Green

**Flower Season:** Spring, Summer



**Botanical Name:** *Distictis buccinatoria*

**Common Name:** Scarlet Trumpet Vine

**Plant Type:** Vine

**Sun:** Full, Half

**Water:** Medium, Extra in Summer

This evergreen vine is highlighted by large, blood red, trumpet-shaped flowers with a yellow throat. This fast growing, evergreen vine can reach 40' tall and wide. These flowers will continue to appear throughout the warm months. This vine prefers full to part sun with regular watering and more during the summer. This is a great plant for a tropical lush look. Make sure you provide support for this plant such as a chain link fence, wall or arbor.

**Plant Height:** 25-40'

**Flower Color:** Red, Yellow

**Attracts Wildlife:** n/a

**Leaf Color:** Green

**Flower Season:** Summer



**Botanical Name:** *Hardenbergia violacea*

**Common Name:** Purple Lilac Vine

**Plant Type:** Vine

**Sun:** Full, Half

**Water:** Medium, Extra in Summer

*Hardenbergia violacea rosea* an evergreen, shrubby vine. Leaves are usually undivided, 2"-4" long. Flowers are lilac or rose and look like sweet peas, blooming spring through summer. Flower color depends on the cultivar. It can quickly reach 6' tall and will climb over nearby plants. Looks great on trellises or arbors. It tolerates full and part sun, preferring well draining, moist soil. Needs regular watering.

**Plant Height:** 6-12'

**Flower Color:** Purple

**Attracts Wildlife:**

**Leaf Color:**

**Flower Season:** Spring, Summer, Fall





**Botanical Name:** *Lochroma cyanea*

**Common Name:** Violet Churcu

**Plant Type:** Shrub, Vine

**Sun:** Full, Half

**Water:** Medium

An stunning plant, instantly recognizable for its deep violet, trumpet shaped blooms which come in huge clusters. It is a much sought after and uncommon garden ornamental, related to the beautiful Brugmansia's. Bushy growing habit to 8-12ft. Foliage has a "tropical" look and the plant is evergreen in suitable climates. Flowering occurs year-round, with more intense blooms produced during spring and fall.

**Plant Height:** 6-12'

**Flower Color:** Purple

**Attracts Wildlife:** Birds

**Leaf Color:** Green

**Flower Season:** Spring, Summer, Fall, Constant



**Botanical Name:** *Jasminum polyanthum*

**Common Name:** Pink Jasmine

**Plant Type:** Vine

**Sun:** Full, Half

**Water:** Medium

This fast-growing evergreen vine features clusters of fragrant white flowers almost all year in cool climates. It does best when grown in sun to part shade.

**Plant Height:** 3-6', 6-12', 12-25'

**Flower Color:** Pink, White

**Attracts Wildlife:** n/a

**Leaf Color:** Green

**Flower Season:** Winter, Spring, Summer



**Botanical Name:** *Lonicera x americana*

**Common Name:** Americana Honeysuckle

**Plant Type:** Vine

**Sun:** Full, Half

**Water:** Low, Medium

This easy, semi-evergreen vine is a cross between two Mediterranean Honeysuckles. It grows 20 feet tall but can easily be kept smaller with pruning. Long, very fragrant 2 inch flowers bloom spring into fall. Coral pink buds open to cream inside then fade to yellow. Prefers sun or medium shade and low water. Attracts birds and hummingbirds and supplies nectar for butterflies. Gopher resistant.

**Plant Height:** 6-12', 12-25'

**Flower Color:** Pink, Yellow, White

**Attracts Wildlife:**

**Leaf Color:**

**Flower Season:** Spring, Summer, Fall



**Botanical Name:** *Pandorea jasminoides*

**Common Name:** Bower Vine

**Plant Type:** Vine

**Sun:** Full, Half

**Water:** Medium

Pandorea is a very classy vine, with clean glossy leaves and beautiful pink flowers with red centers. It is a terrific patio plant that is elegant anywhere you use it.

**Plant Height:** 6-12', 12-25'

**Flower Color:** Pink, Red, Multi-Colored

**Attracts Wildlife:** n/a

**Leaf Color:** Dark Green

**Flower Season:** Spring, Summer, Fall



**Botanical Name:** *Passiflora caerulea*

**Common Name:** Blue Crown Passion Flower

**Plant Type:** Vine

**Sun:** Full

**Water:** Medium

A vigorous vine growing up to 30' long, with exotic complex ornamental flowers 4" in diameter in summer, followed by fruit that looks like orange colored eggs. This plant does best in full sun with well draining, sandy or gravelly soil. Too much fertilizer will create lots of foliage but little flowering. They appear to die in cold winter areas but may come back. It needs deep and infrequent watering. This plant is not tidy looking and not for trellising neatly.

**Plant Height:** 25-40'

**Flower Color:** Blue, Purple, White, Multi-Colored

**Attracts Wildlife:** n/a

**Leaf Color:** Green

**Flower Season:** Summer



**Botanical Name:** *Plumbago auriculata* 'Royal Cape'

**Common Name:** 'Royal Cape' Cape Plumbago

**Plant Type:** Ground cover, Perennial, Vine

**Sun:** Full, Half

**Water:** Very Low, Low

This hybrid grows 2-5' tall and has small, light green leaves with deep blue flowers that bloom spring thru fall. Prune back in late winter to control growth and to keep compact. Not fussy about soil type, but best with good drainage. Great as a bank cover, fence, wall, filler, or background shrub. Has a sticky substance on the sepals that prevents crawling insects such as ants from reaching the nectar in the tubular tubes, thus accommodating flying pollinators.

**Plant Height:** 1-3', 3-6'

**Flower Color:** Blue

**Attracts Wildlife:**

**Leaf Color:**

**Flower Season:** Spring, Summer, Fall



**Botanical Name:** *Rosa 'Cecile Brunner'*

**Common Name:** Cecile Brunner Rose (polyantha)

**Plant Type:** Vine

**Sun:** Full, Half

**Water:** Low

This climbing rose can grow as tall as 25' with support. It has become one of the most popular roses in cultivation because of its strong display in spring of lightly fragrant flowers that look like tiny, high centered, hybrid tea roses. It is long-lived, disease resistant and tolerates everything from poor soil to partial shade.

**Plant Height:** 6-12', 12-25'

**Flower Color:** Pink

**Attracts Wildlife:** n/a

**Leaf Color:** Green

**Flower Season:** Spring



**Botanical Name:** *Rosa banksiae*

**Common Name:** Lady Banks' Rose

**Plant Type:** Vine

**Sun:** Full, Half

**Water:** Low

Lady Bank's Rose is a vigorous climbing vine that will grow to 20' or more. It has glossy, leathery green leaves with large showy clusters of small yellow flowers that bloom in spring. It is essentially thornless and is a good cover for walls, fences or an arbor.

**Plant Height:** 6-12', 12-25'

**Flower Color:** White

**Attracts Wildlife:** n/a

**Leaf Color:** Dark Green

**Flower Season:** Spring



**Botanical Name:** *Tecoma capensis*

**Common Name:** Cape Honeysuckle

**Plant Type:** Shrub, Ground cover, Vine

**Sun:** Full, Half

**Water:** Low

The Cape Honeysuckle is an evergreen shrub that grows to 8' tall with pruning, or a vine that reaches 20' with support. The leaflets are shiny green, and the fall-winter flowers are orange and tubular shaped. This shrub can tolerate sun or part shade, heat, wind, and salt air. The Cape Honeysuckle is drought tolerant and attracts hummingbirds.

**Plant Height:** 6-12'

**Flower Color:** Orange, Red

**Attracts Wildlife:** n/a

**Leaf Color:** Dark Green

**Flower Season:** Winter, Summer, Fall





**Botanical Name:** *Thunbergia gregorii*

**Common Name:** Orange Clock Vine

**Plant Type:** Ground cover, Perennial, Vine

**Sun:** Full, Half

**Water:** Low, Medium

This trailing evergreen vine produces large, clear orange flowers from spring through fall. It must be protected from frost and should be grown in areas of sun to part shade.

**Plant Height:** 1-3'

**Flower Color:** Orange

**Attracts Wildlife:** n/a

**Leaf Color:** Light Green

**Flower Season:** Winter, Spring, Summer, Fall, Intermittent



**Botanical Name:** *Trachelospermum jasminoides*

**Common Name:** Star Jasmine, Maile Haole

**Plant Type:** Ground cover, Vine

**Sun:** Full, Half, Shade

**Water:** Medium

Star Jasmine is an evergreen vine that grows 20' tall or a groundcover that reaches 1'-2' tall and 4'-5' wide. It has white fragrant flowers in summer and thrives in sun or partial shade. It appreciates regular watering. Leaves are dark green, oval, thick, about 2" long. This is a great plant on a trellis, in containers, or in a parking strip. The sweet fragrance attracts pollinators.

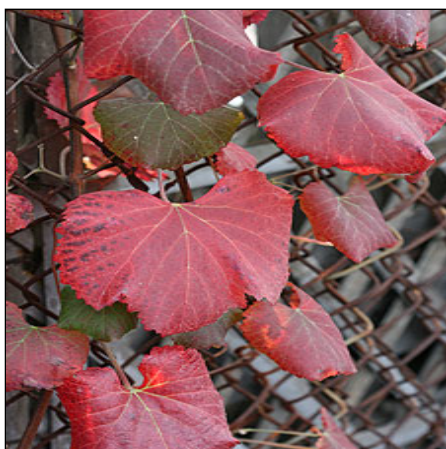
**Plant Height:** 1-3', 12-25'

**Flower Color:** White

**Attracts Wildlife:**

**Leaf Color:**

**Flower Season:** Summer



**Botanical Name:** *Vitis X californica 'Roger's Red'*

**Common Name:** Roger's Red Wild Grape

**Plant Type:** Vine

**Sun:** Full, Half

**Water:** Very Low

Woody, vigorous, deciduous vine grows 15-30' with round large, gray green leaves and a sprawling, climbing growth habit. Leaves turn spectacular deep red in fall. Good choice to cover fences, trellises, arbors, or as a ground cover. Flowers are small, fragrant, and white and summer berry clusters are small, seedy, and loved by birds. Adaptable vine, thrives in full sun to light shade with regular to moderate water. Grows well with little summer water and is drought tolerant. Will typically grow less aggressively in dry conditions. Good habitat plant. This cultivar is now thought to be a na ...

**Plant Height:** 12-25', 25-40'

**Flower Color:** White

**Attracts Wildlife:**

**Leaf Color:**

**Flower Season:** Spring



**Botanical Name:** *Wisteria sinensis*

**Common Name:** Chinese Wisteria

**Plant Type:** Vine

**Sun:** Full, Half

**Water:** Medium

This deciduous vine can quickly and aggressively reach 30' and wide, depending on conditions. It bears rounded clusters of strongly fragrant flowers which open more or less all at once. Cultivars have blue, pink, white, purple or lavender colors, attracting hummingbirds in spring, followed by leafing out of foliage which are usually leaflets, followed by velvety, long, drooping pods. This vine can tolerate full sun to part shade, preferring well draining, rich, moist soil. But it is very reliable and can take drought conditions if established. It looks great in containers and even as a bon ...

**Plant Height:** 25-40'

**Flower Color:** Lavender, Multi-Colored

**Attracts Wildlife:** Hummingbirds

**Leaf Color:** Green

**Flower Season:** Spring

© 2020 Acacia Garden Solutions