

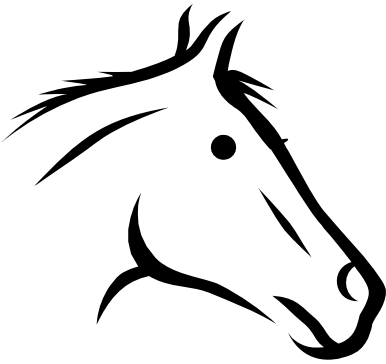
Placer County 4-H

Horse Mastership

Written Test

Study Guide

Levels 1-6



Revised March 3, 2010

UNIVERSITY OF CALIFORNIA



CITIZENSHIP

LEADERSHIP

LIFE SKILLS

4-H

Youth
DEVELOPMENT
PROGRAM

**Placer County Horse Mastership
Written Study Guide
Level 1**

On the first level written test 4-H members will primarily be tested on the information from the following two books available from the 4-H office:

The Light Horse (TLH)
Horses and Horsemanship (H&HMS)

There will also be some general knowledge questions and you are encouraged to review material from other sources such as:

Horses by J. Warren Evans

<u>Area to Study</u>	<u>Source</u>	<u>Points</u>
Parts of the horse Know all 46 parts since you don't know which 26 will be asked on the test and it counts for 40% of your total score	TLH page 4	26
Face and leg markings	TLH pages 24-25 H&HMS pages 4-7	6
Parts of the English and Western saddle	TLH page 23 H&HMS page 31-33	14
Unsoundness of the horse	TLH page 29	6
Grooming Equipment	TLH page 16-17 H&HMS page 35-39	3
Miscellaneous/multiple choice	Anything on safety, showmanship, diseases, etc from the 2 books is fair game	5
<u>Total points for written test</u>		<u>60</u>

**Placer County Horse Mastership
Written Study Guide
Level 2**

On the second level written test 4-H members will primarily be tested on the information from the following three books available from the 4-H office:

The Light Horse (TLH)
Horses and Horsemanship (H&HMS)
Horse Science (HS)

There will also be some general knowledge questions and you are encouraged to review material from other sources such as:

Horses by J. Warren Evans
UC Davis Book of the Horse

<u>Area to Study</u>	<u>Source</u>	<u>Points</u>
Parts of the horse Know all 46 parts since you don't know which 30 will be asked on the test and it counts for 30% of your total score	TLH page 4	30
Face and leg markings	TLH pages 24-25 H&HMS pages 4-7	15
Parts of the English and Western saddle	TLH page 23 H&HMS page 31-33	22
Unsoundness of the horse	TLH page 29 HS page 14	8
Grooming Equipment	TLH page 16-17 H&HMS page 35-39	5
Miscellaneous/multiple choice General knowledge questions	Anything on safety, showmanship, diseases, etc from the 2 books is fair game	9
Parts of the Hoof	TLH page 18 H&HMS page 48-49	6
Tack care	TLH page 21 H&HMS page 34	4
<u>Total points for written test</u>		<u>99</u>

**Placer County Horse Mastership
Written Study Guide
Level 3**

On the third level written test 4-H members will primarily be tested on the information from the following three books available from the 4-H office:

The Light Horse (TLH)
Horses and Horsemanship (H&HMS)
Horse Science (HS)

There will also be some general knowledge questions and you are encouraged to review material from other sources such as:

Horses by J. Warren Evans
UC Davis Book of the Horse

<u>Area to Study</u>	<u>Source</u>	<u>Points</u>
Parts of the horse Know all 46 parts since you don't know which 43 will be asked on the test and it counts for 25% of your total score	TLH page 4	43
Parts of the Hoof	TLH page 18 H&HMS page 48-49	18
Unsoundnesses and blemishes of the horse	TLH page 29 HS page 14	26
Horse Health	TLH page 8-14 HS pages 45-59	8
Tack and Equipment	TLH page 23 H&HMS page 27-34	17
Parts of the English and Western saddle	TLH page 23 H&HMS page 31-33	26
Teeth	TLH page 13 HS pages 14-17	7
Safety	TLH pages 15-16 H&HMS pages 51-54	10
Horsemanship	H&HMS pages 20-26	6
Showmanship	H&HMS page 44-46	5
<u>Total points for written test</u>		<u>166</u>

**Placer County Horse Mastership
Written Study Guide
Level 4**

On the fourth level written test 4-H members will primarily be tested on the information from the following three books available from the 4-H office:

The Light Horse (TLH)
Horses and Horsemanship (H&HMS)
Horse Science (HS)

There will also be some general knowledge questions and you are encouraged to review material from other sources such as:

Horses by J. Warren Evans
UC Davis Book of the Horse

This test is significantly more difficult than the three previous levels and there is a lot of material covered in the test. You need to prepare adequately to pass. Cramming at the last minute will not be enough to successfully complete this test.

<u>Area to Study</u>	<u>Source</u>	<u>Points</u>
Divisions of the horse	HS page 6	5
Parts of the Leg and Hoof	TLH page 18 H&HMS page 48-49	23
Unsoundnesses and blemishes of the horse	TLH page 29 HS page 5-13	25
Nutrition and Feeding	TLH page 5-8 HS pages 32-41	16
Internal and External parasites	TLH page 10-14 HS page 52-59	13
Conformation	HS page 8-13 H&HMS pages 8-13	7
Color and Color Markings	TLH page 24-25 H&HMS pages 4-7	24
Horse Breed Terms	H&HMS page 56 green box, HS page green box	11
Grooming and Showing at Halter	H&HMS pages 44-46 TLH pages 16-17, 32-33	19
Showing in performance	H&HMS pages 20-26, 40-46	21
Glossary	Any terms in all 3 books related to horses	14
<u>Total points for written test</u>		<u>179</u>

**Placer County Horse Mastership
Written Study Guide
Level 5**

On the fifth level written test 4-H members will primarily be tested on the information from the following three books available from the 4-H office:

The Light Horse (TLH)
Horses and Horsemanship (H&HMS)
Horse Science (HS)

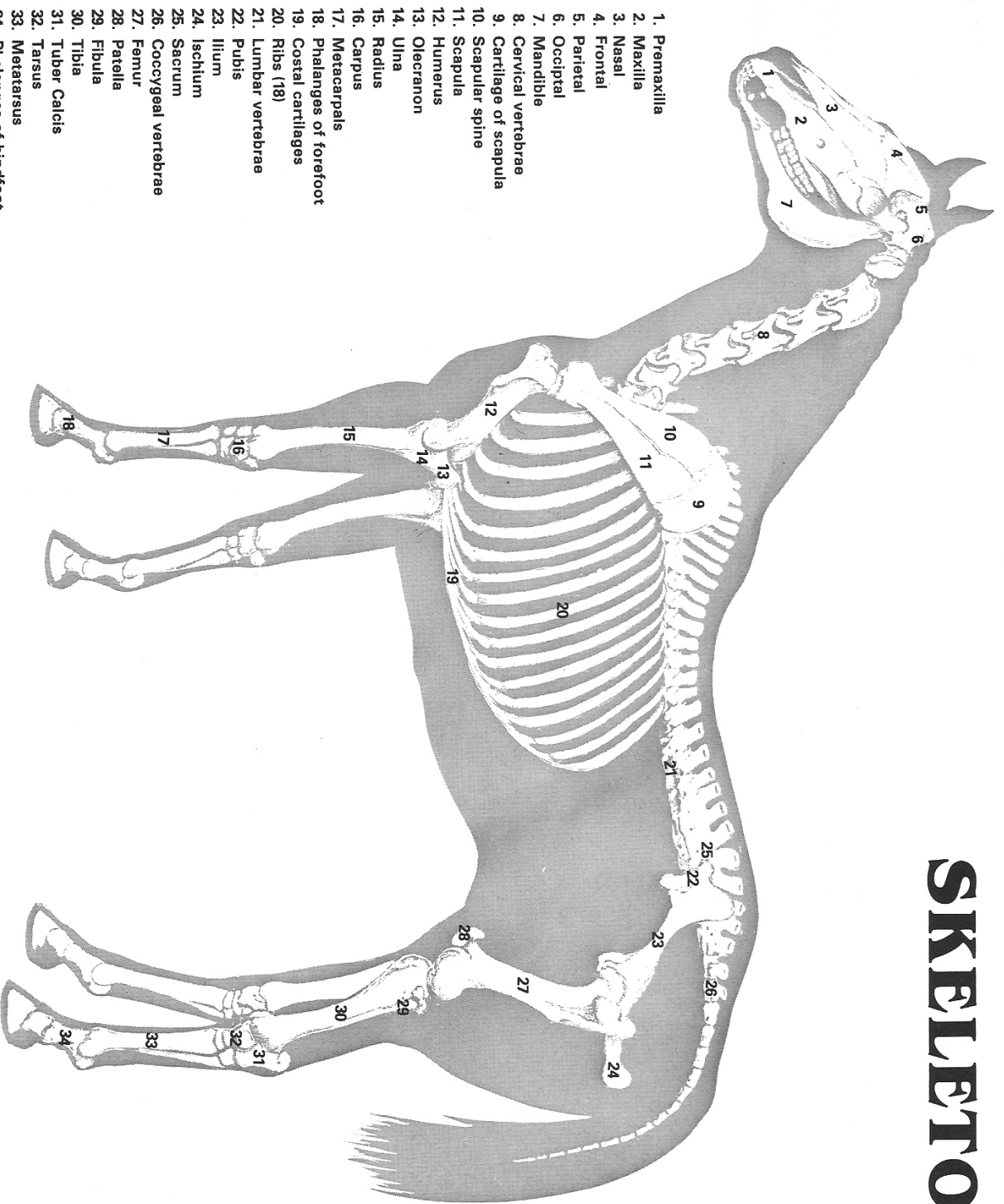
There will also be some general knowledge questions and you are encouraged to review material from other sources such as:

Horses by J. Warren Evans
UC Davis Book of the Horse

This test is significantly more difficult than level 4 and there is a lot of material covered in the test. You need to prepare adequately to pass. Cramming at the last minute will not be enough to successfully complete this test. A large portion of this test is fill-in answers and correct spelling counts.

<u>Area to Study</u>	<u>Source</u>	<u>Points</u>
Skeleton of the horse	HS page 8-9, attached diagram, Internet	9
Parts of the Leg and Hoof	TLH page 18 H&HMS page 48-49	23
Unsoundnesses of the horse	TLH page 29 HS page 5-13	22
Conformation	HS page 8-13 H&HMS pages 8-13	22
Nutrition and Feeds	TLH page 5-8 HS pages 32-41	25
The Digestive System	HS pages 27-31	11
Internal parasites	TLH page 10-14 HS page 52-59	18
Teeth and Dentition	HS pages 14-17	14
Care of the Horse	H&HMS pages 35-39, 47-50 TLH pages 12-20 HS pages 52-55	18
Safety	H&HMS pages 51-54 TLH page 22 HS pages 4-5	12
Nature and Behavior	HS pages 4-7	8
<u>Total points for written test</u>		<u>182</u>

SKELLETON



1. Premaxilla
2. Maxilla
3. Nasal
4. Frontal
5. Parietal
6. Occipital
7. Mandible
8. Cervical vertebrae
9. Cartilage of scapula
10. Scapular spine
11. Scapula
12. Humerus
13. Olecranon
14. Ulna
15. Radius
16. Carpus
17. Metacarpals
18. Phalanges of forefoot
19. Costal cartilages
20. Ribs (18)
21. Lumbar vertebrae
22. Pubis
23. Ilium
24. Ischium
25. Sacrum
26. Coccygeal vertebrae
27. Femur
28. Patella
29. Fibula
30. Tibia
31. Tuber Calcis
32. Tarsus
33. Metatarsus
34. Phalanges of hindfoot

**Placer County Horse Mastership
Written Study Guide
Level 6**

On the sixth level written test 4-H members will primarily be tested on the information from the following three books available from the 4-H office:

The Light Horse (TLH)
Horses and Horsemanship (H&HMS)
Horse Science (HS)

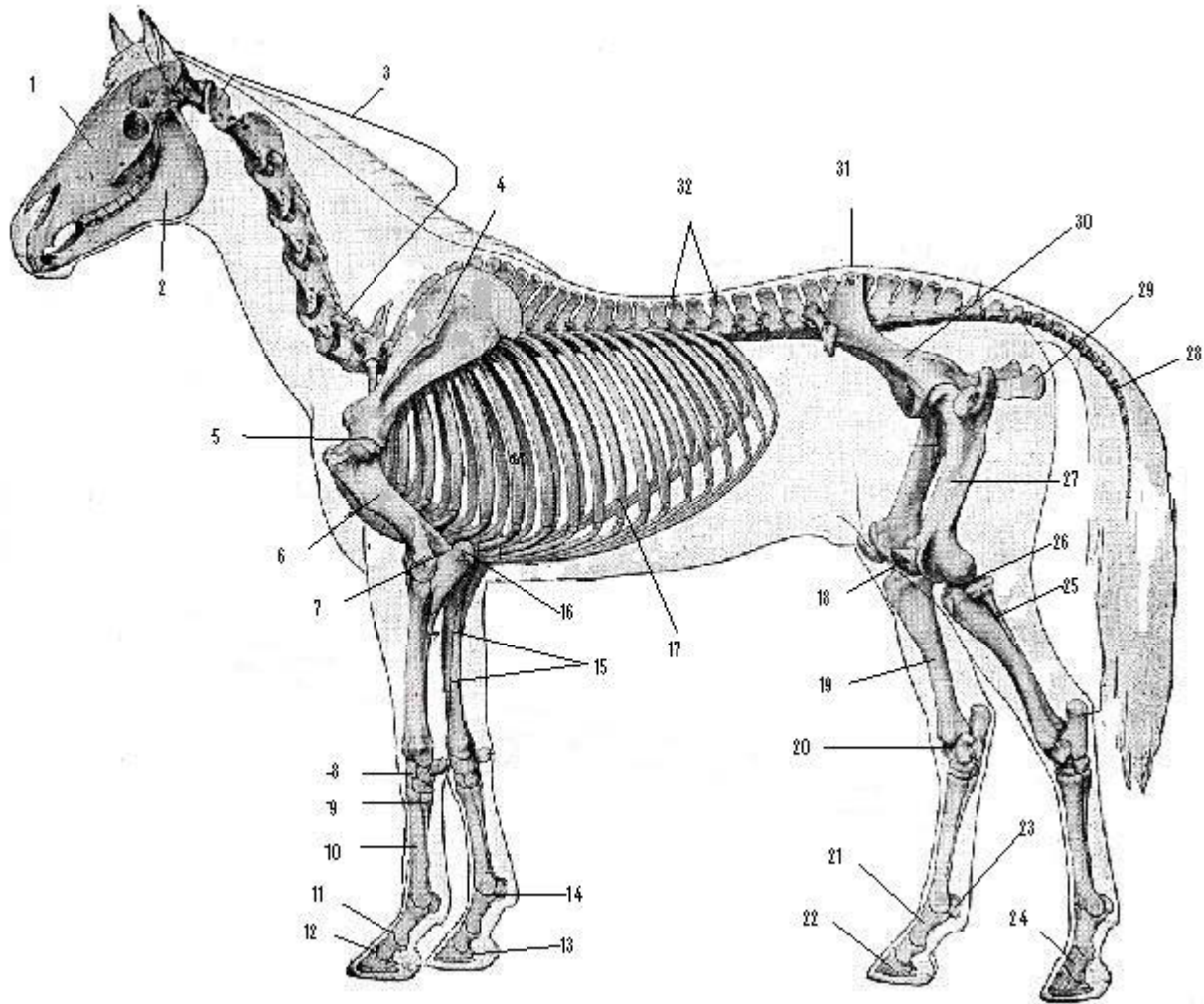
There will also be some general knowledge questions and you are encouraged to review material from other sources such as:

Horses by J. Warren Evans
UC Davis Book of the Horse

This test is significantly more difficult than any of the previous levels and there is a lot of material covered in the test. You need to prepare adequately to pass. Cramming at the last minute will not be enough to successfully complete this test. Most of this test is fill-in answers, short answer, and short essay questions and correct spelling counts.

<u>Area to Study</u>	<u>Source</u>	<u>Points</u>
Conformation/Functional Anatomy	HS pages 10-12 H&HMS pages 10-13 TLH pages 4-5	22
Unsoundnesses of the horse	TLH page 29 HS page 5-13	13
Skeleton of the horse	HS page 8-9, attached diagram, Internet	32
Teeth and Age Determination	HS pages 14-17	16
The Digestive System	HS pages 27-31	25
Feeding and Nutrients	TLH page 5-8 HS pages 32-41	29
Reproduction Know the reproductive cycle in detail, know all the terms/definitions, know hormones	HS pages 18-26	44
Health and Diseases	HS pages 45-59	60
<u>Total points for written test</u>		<u>241</u>

Level 6 Skeleton Diagram



- | | | | |
|-----|---|-----|---------------------------------|
| 1. | Skull | 17. | Ribs (Rib Cage) |
| 2. | Mandible | 18. | Patella (knee cap) |
| 3. | Cervical Vertebra (vertebra of the neck) | 19. | Tibia |
| 4. | Scapula (shoulder blade) | 20. | Tarsal Joint |
| 5. | Shoulder joint | 21. | Long Pastern Bone (P1) |
| 6. | Humerus | 22. | Coffin Bone (P3) |
| 7. | Elbow Joint | 23. | Proximal Sesamoid Bone |
| 8. | Carpal Joint (knee) | 24. | Short Pastern Bone (P2) |
| 9. | 4 th Metacarpal bone (outside splint bone) | 25. | Fibula |
| 10. | 3 rd Metacarpal bone (Cannon bone) | 26. | Stifle Joint |
| 11. | Pastern Joint | 27. | Femur (thigh) |
| 12. | Coffin Joint | 28. | Coccygeal vertebra (tail bones) |
| 13. | Navicular bone | 29. | Point of Buttock (Tuber Ishii) |
| 14. | Fetlock Joint | 30. | Pelvis |
| 15. | Radius and Ulna (forearm) | 31. | Point of Croup |
| 16. | Point of Elbow | 32. | Dorsal Spinous processes |