



The Issue

California wants and needs for its youth to thrive — not merely to survive or face fewer problems. Accurate, compelling and actionable community-scale youth data are a key resource in fostering healthy families and communities. But how do we know whether our young people are doing well?

What has ANR done?

The UC Davis Center for Regional Change and UC Cooperative Extension have collaboratively produced Putting Youth on the Map, an interactive website with two geo-referenced indices, 46 additional youth data maps, links to other youth data sources, and examples of youth-generated maps.

The Youth Well-being Index scores areas bound by school districts based on measures of teenagers' physical and emotional health, educational outcomes, social relationships and community contexts.

The Youth Vulnerability Index provides composite scores based on relative rates at which youth in each census tract experience conditions associated with inadequate support for well-being: not graduating from high school, foster care referral, teen pregnancy, and very low household income.

Over 130 youth and community development professionals have participated in introductory webinars. An orientation video is posted on the website.

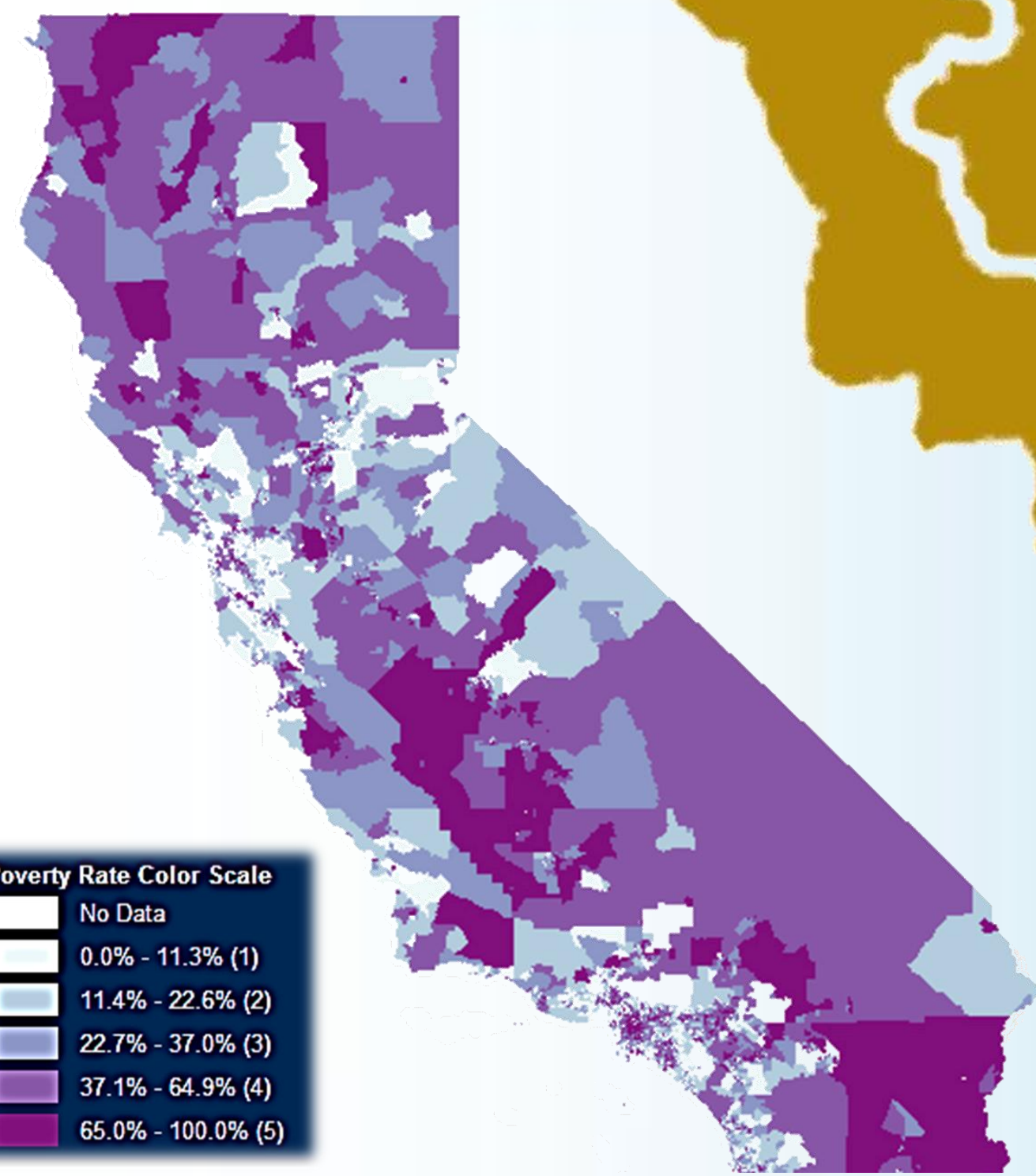
The Payoff

Putting Youth on the Map demonstrates the power of ANR's campus-community continuum to create innovative, practical, research-based tools. This website enables users to assess various aspect of youth wellness, locate places where youth need additional support, and consider data at multiple scales. Available data and analyses can:

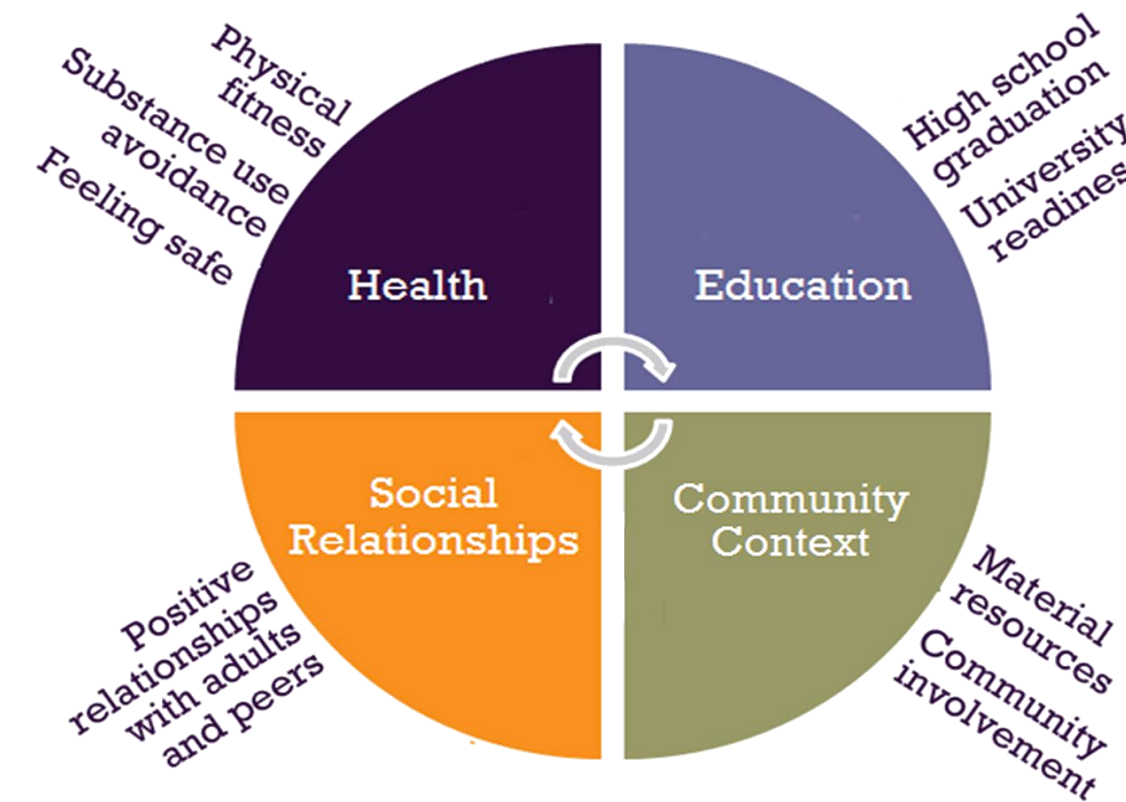
- support grant proposal development,
- inform public and private investment,
- facilitate cross sector collaboration,
- inform youth organizing, youth service, public policy, and community advocacy at local, regional and statewide scales.

Since the recent website launch over 350 new users have visited. Non-profit leaders have used the site to develop grant proposals. Youth advocates employed the site to introduce young people to youth data. Pending additional funds, capacity-building support will be offered to help policy-makers and policy advocates use this resource with and on behalf of youth.

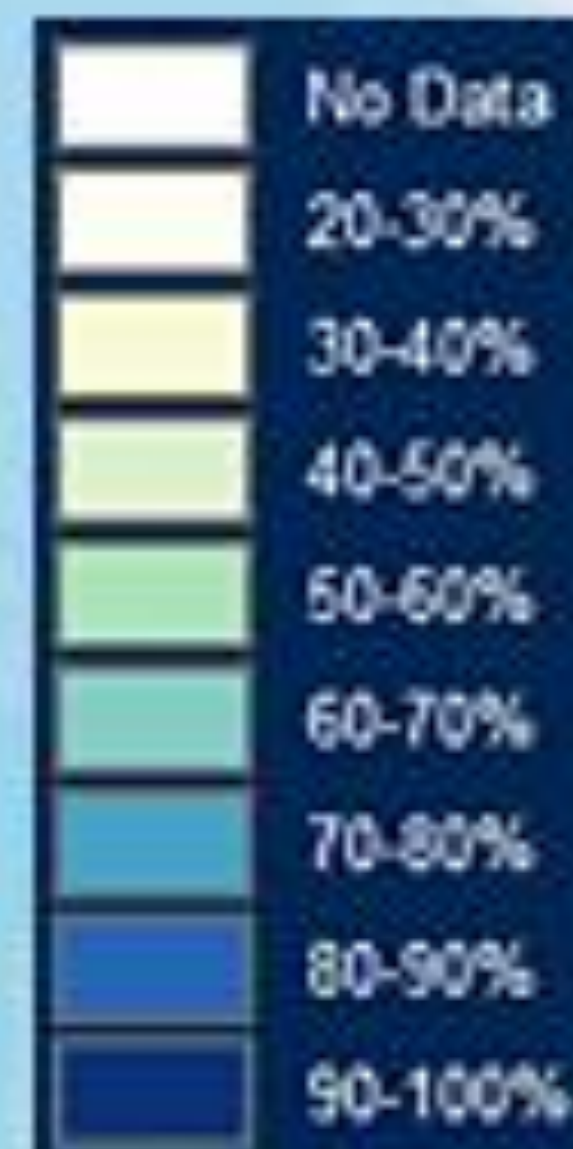
Poverty Rate



Youth Well-Being Index Organization



Index of Well-Being



Youth Vulnerability Indicators



Well-being Index

- Positive focus
- Scores should reflect status compared to an optimal or ideal score

Vulnerability Index

- Help locate concentrations of vulnerable teens

Other Data

- Poverty
- Food Deserts
- STDs
- Truancy rates
- Youth Voices
- And more...

Putting Youth on the Map Team

■ Agriculture and Natural Resources (ANR) Leaders and County-Based Cooperative Extension Advisors

- David Ginsburg, MPH
- Charles Go, PhD
- Russell Hill, MPA
- Anna Martin, MA
- Fe Moncloa, PhD candidate
- Terri Spezzano, MA, MAS
- Constance Schneider, PhD

■ From UC Davis

- Nancy Erbstein, PhD (Human Ecology) (Project Director)
- Este Geraghty, MD, MS, MPH (UCDMC)
- Teri Greenfield, MS (Center for Regional Change)
- Jonathan London, PhD (Human Ecology and Center for Regional Change)

