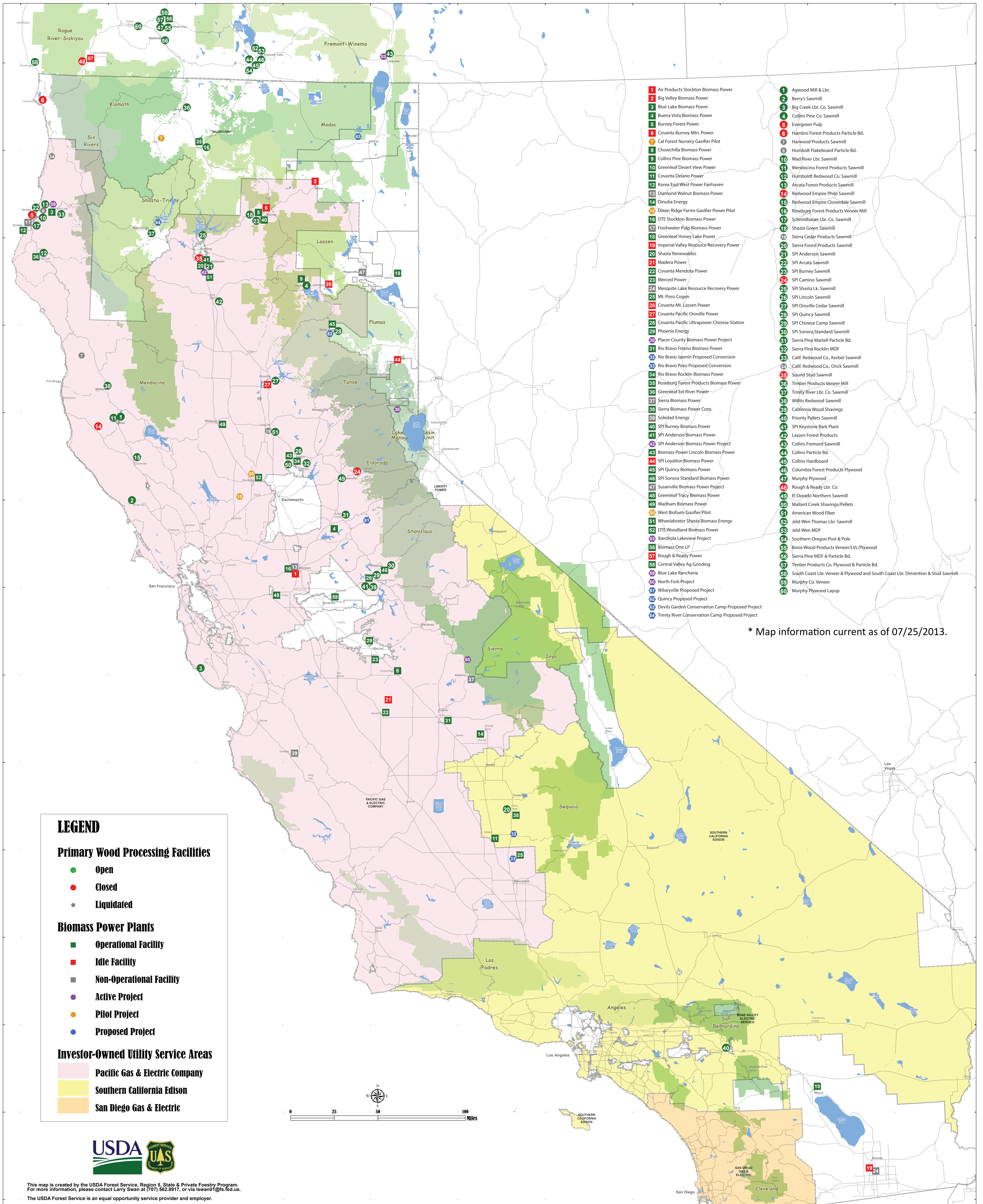


CALIFORNIA / SOUTHERN OREGON

WOOD PRODUCTS PRIMARY PROCESSING & BIOMASS ENERGY FACILITIES



- 1 Air Products Stockton Biomass Power
- 2 Big Valley Biomass Power
- 3 Blue Lake Biomass Power
- 4 Buena Vista Biomass Power
- 5 Burney Forest Power
- 6 Covanta Burney Mtn. Power
- 7 Cal Forest Nursery Gasifier Pilot
- 8 Chowchilla Biomass Power
- 9 Collins Pine Biomass Power
- 10 Greenleaf Desert View Power
- 11 Covanta Delano Power
- 12 Korea East West Power Fairhaven
- 13 Diamond Walnut Biomass Power
- 14 Dimuba Energy
- 15 Dixon Ridge Farms Gasifier Power Pilot
- 16 DTE Stockton Biomass Power
- 17 Freshwater Pulp Biomass Power
- 18 Greenleaf Honey Lake Power
- 19 Imperial Valley Resource Recovery Power
- 20 Shasta Renewables
- 21 Madera Power
- 22 Covanta Mendota Power
- 23 Merced Power
- 24 Mesquite Lake Resource Recovery Power
- 25 Mt. Poso Cogen
- 26 Covanta Mt. Lassen Power
- 27 Covanta Pacific Oroville Power
- 28 Covanta Pacific Ultrapower Chinese Station
- 29 Phoenix Energy
- 30 Placer County Biomass Power Project
- 31 Rio Bravo Fresno Biomass Power
- 32 Rio Bravo Jasin Proposed Conversion
- 33 Rio Bravo Poso Proposed Conversion
- 34 Rio Bravo Rocklin Biomass Power
- 35 Roseburg Forest Products Biomass Power
- 36 Greenleaf Eel River Power
- 37 Sierra Biomass Power
- 38 Sierra Biomass Power Corp.
- 39 Soledad Energy
- 40 SPI Burney Biomass Power
- 41 SPI Anderson Biomass Power
- 42 SPI Anderson Biomass Power Project
- 43 Biomass Power Lincoln Biomass Power
- 44 SPI Loyalton Biomass Power
- 45 SPI Quincy Biomass Power
- 46 SPI Sonora Standard Biomass Power
- 47 Susanville Biomass Power Project
- 48 Greenleaf Tracy Biomass Power
- 49 Wadham Biomass Power
- 50 West Biofuels Gasifier/Pilot
- 51 Wheelabrator Shasta Biomass Energy
- 52 DTE Woodland Biomass Power
- 53 Iberdrola Lakeview Project
- 54 Biomass One LP
- 55 Rough & Ready Power
- 56 Central Valley Ag Grinding
- 57 Blue Lake Rancheria
- 58 North Fork Project
- 59 Wilsey Proposed Project
- 60 Quincy Proposed Project

- 1 Agwood Mill & Lbr.
- 2 Berry's Sawmill
- 3 Big Creek Lbr. Co. Sawmill
- 4 Collins Pine Co. Sawmill
- 5 Evergreen Pulp
- 6 Hambro Forest Products Particle Bd.
- 7 Harwood Products Sawmill
- 8 Humbolt Flakeboard Particle Bd.
- 10 Mad River Lbr. Sawmill
- 11 Mendocino Forest Products Sawmill
- 12 Humboldt Redwood Co. Sawmill
- 13 Alcata Forest Products Sawmill
- 14 Redwood Empire Philo Sawmill
- 15 Redwood Empire Cloverdale Sawmill
- 16 Roseburg Forest Products Veneer Mill
- 17 Schmidbauer Lbr. Co. Sawmill
- 18 Shasta Green Sawmill
- 19 Sierra Cedar Products Sawmill
- 20 Sierra Forest Products Sawmill
- 21 SPI Anderson Sawmill
- 22 SPI Arcata Sawmill
- 23 SPI Burney Sawmill
- 24 SPI Camino Sawmill
- 25 SPI Shasta Lk. Sawmill
- 26 SPI Lincoln Sawmill
- 27 SPI Oroville Cedar Sawmill
- 28 SPI Quincy Sawmill
- 29 SPI Chinese Camp Sawmill
- 30 SPI Sonora Standard Sawmill
- 31 Sierra Pine Rocklin MDF
- 32 Sierra Pine Martell Particle Bd.
- 33 Calif. Redwood Co., Korbel Sawmill
- 34 Calif. Redwood Co., Orick Sawmill
- 35 Sound Stud Sawmill
- 36 Timber Products Veneer Mill
- 37 Trinity River Lbr. Co. Sawmill
- 38 Willits Redwood Sawmill
- 39 California Wood Shavings
- 40 Priority Pallets Sawmill
- 41 SPI Keystone Bark Plant
- 42 Lassen Forest Products
- 43 Collins Fremont Sawmill
- 44 Collins Particle Bd.
- 45 Collins Hardboard
- 46 Columbia Forest Products Plywood
- 47 Murphy Plywood
- 48 Rough & Ready Lbr. Co.
- 49 El Dorado Northern Sawmill
- 50 Mallard Creek Shavings/Pellets
- 51 American Wood Fiber
- 52 Jeld-Wen Thomas Lbr. Sawmill
- 53 Jeld-Wen MDF
- 54 Southern Oregon Post & Pole
- 55 Boise Wood Products Veneer/LVL/Plywood
- 56 Sierra Pine MDF & Particle Bd.
- 57 Timber Products Co. Plywood & Particle Bd.
- 58 South Coast Lbr. Veneer & Plywood and South Coast Lbr. Dimension & Stud Sawmill
- 59 Murphy Co. Veneer
- 60 Murphy Plywood Layup

* Map information current as of 07/25/2013.

LEGEND

Primary Wood Processing Facilities

- Open
- Closed
- Liquidated

Biomass Power Plants

- Operational Facility
- Idle Facility
- Non-Operational Facility
- Active Project
- Pilot Project
- Proposed Project

Investor-Owned Utility Service Areas

- Pacific Gas & Electric Company
- Southern California Edison
- San Diego Gas & Electric



This map is created by the USDA Forest Service, Region 5, State & Private Forestry Program. For more information, please contact Larry Swan at (707) 562-8917, or via lswan1@fs.fed.us. The USDA Forest Service is an equal opportunity service provider and employer.