

Welcome to 2023 Home Economics Day! "Back to the Barn"

Introduction

This handbook contains a detailed description of the competitions, classes, and requirements for entering and participating at 2023 Modoc County Home Economics Day.

Overview

Home Economics Day provides 4-H members throughout Modoc County with the opportunity to exhibit the project work you have completed between October 2022 and May 2023. The number of exhibits you may enter in each competition/class and section is **LIMITED**...so be sure to enter only the **BEST** examples of your project work. Be sure to make sure you qualify to enter a class. Many classes are "project" specific. While some do not require you to be in the project at all. See Table 1 below for additional information.

Your exhibit(s) will be evaluated by a panel of judges. The judges will recognize your achievement and offer suggestions and ideas for future project work. We hope this feedback will help you to **make the best even better!**

BEFORE ENTERING, PLEASE REVIEW THIS HANDBOOK CAREFULLY.

Table 1: 2023 Competition Overview

Competition	Class	Eligibility
Arts & Crafts *Members must be enrolled in a 4-H project to enter classes 1-6.	1. Ceramics 2. Leathercraft 3. Braiding 4. Metal Working 5. Wood Working 6. Other Art & Craft	Project-Specific 4-H members may enter only one (1) item in each class and may not enter more than a total of four (4) classes (i.e., a maximum of four (4) exhibits in the Arts & Crafts Competition).
Photography *Members do not have to be enrolled in a photography project to enter classes 7-10.	7. Color Photography – Scenery, People or Animals 8. Black & White Photography – Scenery, People or Animals 9. Photos Featuring 4-H Members in their Uniforms (Color or Black & White) 10. Farm/Ranch Pictures	<ul style="list-style-type: none"> 4-H Photography may enter only one (1) photograph in each class and may not enter more than a total of two (2) classes (i.e., a maximum of two (2) photographs may be entered in the Photography Competition). To enter Photography during HED. You need not be enrolled in this project. Note: Photographs must be taken by the person entering the contest. Photographs must have been taken within the current 4-H year. Photographs must be mounted on a photograph mount/mat board or foam board. Maximum mount/mat board size is 11" x 14". Photographs must be at least "5x7"
Centerpiece and Place Setting *Members must be entered in a cooking project to enter classes 11-12. *Members must be entered in a Sewing project to enter class 13	11. Centerpiece 12. Place Setting Purchased 13. Place Setting with Placemat/Napkin Sewn or Made	<ul style="list-style-type: none"> Cooking and Field crops project members may enter only one centerpiece. Youth are encouraged to use HED theme. Cooking members may enter only one place setting in class 13 Clothing & Textiles and Fiber Arts Project Members may enter one place setting in Class 13. To enter, the project member must have sewn the placemat and napkin used in the place setting. The placemat and napkin exhibited in this competition may NOT be entered in any other competition. Youth are encouraged to use HED theme.
Fashion Revue*	14. Traditional* 15. Costume Challenge*	<ul style="list-style-type: none"> Clothing & Textiles Project Members may enter only one (1) garment or outfit in classes 14-16 for this

<p>* State 4-H Field Day Qualifying Competitions</p> <p>*In order to qualify for State Fashion Revue in classes 14,15 and 19 youth must be declared the County winner from HED.</p> <p>*Classes 16,17 and 18 do not need to qualify at a County event to enter the State fashion revue competition.</p> <p>(Check 2023 State Fashion Revue Categories on the UCANR 4-H website for more information)</p>	<p>16. Make it with wool* 17. Softie Challenge* 18. Leather Creations* 19. Consumer Science* Purchase \$50 limit</p>	<p>competition. For any garments or outfits entered in these classes' youth MUST also be entered in the Sewing Construction Competition or they may not be worn during Fashion Revue.</p> <ul style="list-style-type: none"> • <u>New! Softie and Leather Creations</u> youth not in a sewing project may enter one item in both of these categories. Both categories may qualify for State Fashion Revue. Youth entering either of these classes must walk them in fashion revue and present items to the judges. • To enter class 17-19 youth do not have to be entered in a sewing project. • To enter the apron challenge youth must be entered in a 4-H sewing project. • In this competition youth may enter maximum of 2 projects (i.e. one in classes 14-16, one in 17-19). • <u>Please Note:</u> Accessories (i.e., hat, scarf, or purse) will not be judged. This class is limited to a garment or outfit you have made or purchased (e.g., skirt, blouse, shirt, pants, apron, etc.). However, accessories may be worn to enhance the outfit during fashion revue.
<p>Fiber Arts and Quilts or Quilt Squares</p> <p>*Members must be entered in a sewing project to enter classes 20-25</p> <p>* Quilts may be entered at State field day with no qualifying at any County events.</p>	<p>20. Crochet & Knit 21. Embroidery 22. Cross Stitch 23. Quilts 24. Quilt Squares 25. Apron Challenge</p>	<ul style="list-style-type: none"> • <u>Fiber Arts Project Members</u> may enter only one (1) crochet & knit, embroidery, and cross stitch item in a maximum of two classes in this competition (i.e., a maximum of two (2) exhibits). • <u>Quilting Project Members</u> may enter a maximum of one quilt and one quilt square in Classes 21 and 22.
<p>Recipe Review</p> <p>*Members must be entered in a cooking project to enter classes 26-29</p> <p>*Any 4-H members may enter classes 30-31</p>	<p>26. Preserves 27. Finger Foods 28. Main Dishes 29. Sweet Endings (Desserts) 30. Pie 31. Chili and corn bread</p>	<ul style="list-style-type: none"> • <u>Cooking Project Members</u> may enter no more than one (1) recipe in up to two (2) classes in the Recipe Review competition (a maximum of (2) exhibits). • Note: All dishes entered in this class must meet the competition requirements or they will be disqualified (not judged). <u>Participants are required</u> to bring serving utensils and knives for cutting (if needed). Plates, forks and napkins for the judges and public will be provided. • All recipe review entries must attach the items recipe to the entry form. See recipe form.
<p>Sewing Construction</p>	<p>32. Traditional 33. Costume Challenge 34. Make it with wool 35. Softie Challenge 36. Leather Creations 37. Accessories (Hat, Scarf, Purse, etc.) 38. Apron Challenge</p>	<ul style="list-style-type: none"> • <u>Clothing & Textiles Project Members</u> may enter only one (1) garment (or outfit) in classes 32-34 (maximum 1 entry). • Members may enter one item in classes 35-36 • Only 1 apron may be entered in class 38 • Only one accessory may be entered in class 37. • <u>Please Note:</u> Garment(s) or outfits to be worn in the Fashion Revue must be entered in this class or they may not be worn during the Fashion Revue.
<p>Cake Decorating</p>	<p>39. Cake Decorating</p>	<ul style="list-style-type: none"> • Must use real cake and be entered in a Foods project. Youth are encouraged to use HED theme.
	<p>40. Cupcake display</p>	<ul style="list-style-type: none"> • Must use real cupcakes. Youth are encouraged to use HED theme.
<p>Scrapbooking</p>	<p>41. Scrapbooking</p>	<ul style="list-style-type: none"> • <u>Scrapbook Project Members</u> may enter only 2 pages in this class. Must be created in 2022-2023 4-H year. Youth must be in a 4-H Scrapbook Project.

Event Rules

1. Participation in this event is limited to youth members enrolled in the Modoc County 4-H Youth Development Program during the 2022-2023 year.
2. **COMPETITIONS:** Each competition will be judged according to the rules in this Handbook (and the associated judging rubrics) and the California State 4-H Fashion Revue Manual (2023), as applicable.
3. **AWARDS:** Junior, Intermediate & Senior entries in each class will be awarded a Blue, Red, White or Green Participation seals according to the Danish system. Primary 4-H members are eligible to receive participation seals and trophy only.
4. **CASH AWARDS:** Cash awards will be given to the 1st-3rd Place **Blue seal** winners in each competition and age division based on the highest average number of points (the low score will be dropped if there is more than a 20% difference between judges). Youth receiving Red, White or green seals will not be eligible for cash awards.

Competition	Cash Award	Additional Information
<ul style="list-style-type: none"> Arts & Crafts Centerpiece & Place Setting Fiber Arts & Quilt Squares Sewing Construction Gardening Apron Challenge Scrapbooking Photography 	1st Place — \$25 2nd Place — \$15 3rd Place — \$10	<ul style="list-style-type: none"> Per age division per competition.
<ul style="list-style-type: none"> Fashion Revue Recipe Review Cake decorating Accessories <p>Special Awards</p> <ul style="list-style-type: none"> Quilts: Youths entering category 23 are eligible for a special award. Quilts must be finished to qualify for this award. 	1 st Place - \$50 2 nd Place - \$35 3 rd Place- \$15 1 st Place - \$75 2 nd Place - \$50 3 rd Place - \$35	

To receive their cash award, recipients must provide the 4-H Office with a STAMPED and ADDRESSED Thank You Note to the Milano's **by 5 p.m. on Thursday, July 20th**. After this date, unclaimed cash awards will be rolled over to be used at next year's event.

Thank you notes should be addressed as follows:

Mark and Jessie Milano
 28749 Banducci Rd.
 Tehachapi, CA 93561

- 5. EXHIBITORS MAY NOT ENTER MORE THAN THE MAXIMUM NUMBER OF EXHIBITS PER COMPETITION/CLASS.** If an exhibitor enters more than the maximum number of exhibits per competition/class, the exhibits listed first on the entry form will be entered and the remaining exhibits will be **DISQUALIFIED (not judged)**.

HED ENTRY FORMS and the required Supplemental Forms must be in the 4-H Office by **5 pm on Wednesday April 12, 2023**. Entry forms may be dropped by the office, mailed or scanned/emailed to: secamacho@ucanr.edu

Required Entry Forms for Each Competition	
All Competitions	Submit one HED Entry Form per EXHIBITOR .
Recipe Review	HED Entry Form + one (1) Copy of recipe . Copy of the recipe needs accompany entry on day of HED. This will go next to the dish. This for people with allergies. Dishes in classes 26-31 with our recipes will be disqualified.
Fashion Revue	HED Entry Form + one (1) Fashion Revue Supplemental Form for each garment (or outfit) entered.

- 6. HED Entry Forms or required Supplemental Forms that are either faxed or received after April 12th will NOT be accepted (NO EXCEPTIONS). Copies of recipes and fashion supplemental forms should be attached to the HED entry form! Youth must also supply these with their dishes on the day of the show.**
7. Age Divisions¹ for each competition (except Sewing Construction) are:
- Primary (Ages 5 to 8)
 - Junior (Ages 9 to 10)
 - Intermediate (Ages 11 to 13)
 - Senior² (Ages 14 to 19)
8. **Please be sure to list the correct Class and Section Number on the HED Entry Form. The 4-H Office is not responsible for any errors that are made.**
9. **Exhibitors/other parties are responsible for checking their entries in at the Registration Table the day of the show.**
10. Entries should remain on display until the Awards Ceremony ends. Please make sure you are cautious of how your tasting display will be refrigerated or kept warm during the day. Members are responsible for this. Food that is not handled properly will not be left out for tasting and run the risk of being disqualified. Members can pick their entries up following the Awards Ceremony.
11. With the exception of Fashion Revue, 4-H members do not need to be present for judging. However, all exhibitors are encouraged to participate in the any of the events happening that day.
12. Participants in all competitions, except Fashion Revue, are encouraged (but not required) to wear their 4-H uniform to the Awards Ceremony. The 4-H Uniform is a 4-H hat, 4-H tie or scarf, white shirt and dark blue jeans/skirt or white jeans/skirt. Clean, neat, casual clothes are also acceptable.
13. No members, parents/guardians or leaders (except Planning Committee Members, Judges, and Competition Coordinators) will be allowed in the judging area for any class.

¹ Age as of January 1, 2023.

² A member is eligible to participate in 4-H until December 31 of the calendar year in which they turn 19.

Judging (TBD)

Each exhibit will be judged against the judging guidelines (not compared to another exhibit). The judging guidelines describe the expectations for an exhibit and incorporate a scale from 1-10 as follows:

- **Developing (1-3 Points) – White Ribbon:** The judge’s intuitive response is to encourage additional practice to develop skills and improve technical proficiency or to take on work that is more appropriate for the exhibitor’s age/experience.
- **Accomplished (4-7 Points) – Red Ribbon:** Exhibits in this category are age and experience appropriate, generally incorporate a more traditional approach, and are technically proficient but may not be as aesthetically pleasing. The judge’s intuitive response to the work is favorable (satisfactory). Most exhibits would be expected to be in the accomplished category.
- **Exemplary (8-10 Points) – Blue Ribbon:** Exhibits in this category are ambitious for the exhibitor’s age/experience, are creative and original, and incorporate imaginative use of materials and ideas. The quality of execution and success of the entry is reflected in the choice of materials, techniques, and methods used. The work is aesthetically pleasing and has appeal beyond the technical proficiency. The judge’s intuitive response to the work is highly favorable (outstanding).

Arts & Crafts

Competition Rules

General:

- This competition is open to Project-Specific 4-H Members only.
- To enter a class in this competition, you **must** be enrolled in the specific project. **Example(s):** (1) if you are NOT enrolled in a Leathercraft project, you may not enter the Leathercraft Class.
- You may enter only one (1) Arts & Crafts exhibit in each class and may not enter more than four (4) sections of this class (i.e., a maximum of four (4) items may be exhibited in the Arts & Crafts Competition).
- Items must have been made or completed by the 4-H member between October 2022 and the present time.

CLASS 1

Sec 1	Primary
Sec 2	Junior
Sec 3	Intermediate
Sec 4	Senior

CERAMICS

CLASS 4

Sec 1	Primary
Sec 2	Junior
Sec 3	Intermediate
Sec 4	Senior

METAL WORKING

CLASS 2

Sec 1	Primary
Sec 2	Junior
Sec 3	Intermediate
Sec 4	Senior

LEATHERCRAFT

CLASS 5

Sec 1	Primary
Sec 2	Junior
Sec 3	Intermediate
Sec 4	Senior

WOOD WORKING

CLASS 3

Sec 1	Primary
Sec 2	Junior
Sec 3	Intermediate
Sec 4	Senior

BRAIDING

CLASS 6

Sec 1	Primary
Sec 2	Junior
Sec 3	Intermediate
Sec 4	Senior

OTHER ART & CRAFT

Photography

Competition Rules

General:

- This competition is open to 4-H Members.
- You may enter only one (1) photograph in each class and may not enter more than a total of two (2) classes in this competition (i.e., a maximum of two (2) photographs may be exhibited).
- The size is minimum 5" x 7" maximum 11" x 14".
- Photographs which are entered must be displayed in a photo mat. Photographs displayed or shown in a picture frame or under a sheet of glass will be DISQUALIFIED.
- Photographs must have been taken by the 4-H member between July 2022 and the present time.
- **Note:** Photographs entered in Class 9 may be scanned and used to help promote the Modoc County 4-H Youth Development Program. If used, the photographer will be given photo credit.

CLASS 7 COLOR PHOTOGRAPHY (SCENERY, PEOPLE, OR ANIMALS)

Sec 1	Primary
Sec 2	Junior
Sec 3	Intermediate
Sec 4	Senior

CLASS 9 PHOTOS FEATURING 4-H MEMBERS IN THEIR UNIFORMS (Color or Black and White)

Sec 1	Primary
Sec 2	Junior
Sec 3	Intermediate
Sec 4	Senior

CLASS 8 BLACK & WHITE PHOTOGRAPHY (SCENERY, PEOPLE OR ANIMALS)

Sec 1	Primary
Sec 2	Junior
Sec 3	Intermediate
Sec 4	Senior

CLASS 10 FARM/RANCH PHOTOGRAPHY

Sec 1	Primary
Sec 2	Junior
Sec 3	Intermediate
Sec 4	Senior

Centerpiece & Place Setting

Competition Rules

General:

- Cooking, and Field Crop Project Members may enter only one centerpiece in class 11
- Clothing & Textiles and Fiber Arts Project Members may enter only one place setting in class 12. To enter, the project member must have sewn the placemat and napkin used in the place setting. The placemat and napkin exhibited in this competition may NOT be entered in any other competition.
- Participants must choose between entering class 12 & 13. Participants may not enter both place setting categories.
- No electric outlets will be available and no lit candles or live animals are allowed.
- Members must set up and clean up their place setting entry without the help of a leader or parent/guardian.

Centerpiece

- Size centerpieces to fit a card table (or about 1/3 of an eight-foot table).
- **Centerpieces should reflect the event theme.**

Place Setting

- The following items are **required** for each place setting: water glass, dinner plate, salad plate, salad fork, dinner fork, dinner knife, spoon, placemat, & napkin.

- Required items must be placed in the **proper** position. Points will be deducted if items are not properly placed.
- Use of other than the required items are **optional**.
- Place settings **should** reflect the event theme as much as possible.
- Exhibitors may spend up to \$20 to prepare their place setting. Price tags on all items must be removed. Failure to do so will result in disqualification.

CLASS 11 CENTERPIECE

Sec 1 Primary
 Sec 2 Junior
 Sec 3 Intermediate
 Sec 4 Senior

**CLASS 13 PLACESSETTING
(PLACEMAT & NAPKIN SEWN OR MADE)**

Sec 1 Primary
 Sec 2 Junior
 Sec 3 Intermediate
 Sec 4 Senior

**CLASS 12 PLACESSETTING
(PURCHASED)**

Sec 1 Primary
 Sec 2 Junior
 Sec 3 Intermediate
 Sec 4 Senior

**Proper Table (Place) Setting
 Example/Guide**



Fashion Revue

Competition Rules

General:

- Fashion Revue is a qualifying competition for the State 4-H Fashion Revue.
- Garments or outfits must have been made (or purchased) between October 2022 and Home Economics Day.
- Garments will be disqualified if they do not meet the Fashion Revue Dress Code (please see Fashion Revue Dress Code Violations on Page 14).
- Fashion Revue exhibitors will also participate in the Public Fashion Show during HED award ceremony.
- Be prepared to talk about what you made (or purchased), what you learned, and answer any questions from the judges.
- If you wish to have an escort/modeling partner, please enter his/her name on your Fashion Revue Supplemental Information Form(s).
- Judges will use the scorecards from the State 4-H Fashion Revue. These are available on the 4-H State website.

Clothing & Textiles Project Members may enter and model only one (1) garment (or outfit) in a maximum of two (2) classes in this competition (i.e., a maximum of two (2) garments or outfits may be modeled). Garments (or outfits) entered in Classes 14, 15, 16 & 17 of this competition **must** also be entered in the SEWING CONSTRUCTION Competition or they may not be worn during Fashion Revue.

Any 4-H Project Member may enter only one (1) garment (or outfit) in Class 19 (Purchased) and Class 15 17,18 and 25 (Apron Challenge) (i.e., a maximum of two (2) garments or outfits may be modeled).

Accessories you have made (such as hats, purses, etc.) may be worn with a garment (or outfit) you have made, but are not eligible for judging in this competition. **If you choose to enter these items as your exhibit, they will be DISQUALIFIED (not judged).**

TRADITIONAL

- Showcases the member's sewing skills & their ability to coordinate an outfit.
- Beginning members may make one garment and purchase coordinating pieces to complete the outfit.
- There is no separate category for wool, cotton or costumes. If the outfit is sewn from yardage, regardless of fabric content, it is a Traditional entry.

CONSUMER SCIENCE PURCHASED

- Demonstrates the member's ability to purchase & coordinate an outfit with careful use of comparison shopping to result in value that surpasses cost.
- Maximum purchase amount not to exceed \$50 for everything showing including shoes, jewelry, and accessories. (Sales tax is not included in the \$40).
- A photocopy of the receipts for each item worn is required. Purchases **must** have been made during the July 2022-2023 4-H year. Receipts may be handwritten if items were obtained from a garage sale, thrift shop, etc.

Leather Creations

Participants in the Leather Creations category will create any leather accessory- purse, wallet, belt, saddlebag, key fob, etc. – in any style. Any leather techniques may be used. Materials used may be any leather, suede, or faux leather products. Participants must present the entry themselves at the fashion revue event.

Softie Challenge

- A stuffed animal, cloth doll, plush toy, soft sculpture, or fabric toy. In this challenge, the participant will sew, felt, knit, or crochet a softie using a patten or their own design. Any type of fabric and any embellishment techniques may be used. Participant must present the entry themselves at the fashion revue event.

Costume Challenge

- Participants in this category will create a costume for themselves or another person using any technique, materials, or pattern. It does not need to be sewn from fabric. The costume can be any theme and from any time, place, or country as long as it is 4-H appropriate. 70% of the costume must be handmade by the member; 30% can be able to move comfortably in the costume – sit, stand, walk, and go up and down stairs.
- This category has no 4-H project requirement. If it was sewn for the member, they must model it. If it was sewn for another person, that person may model it, or it may be shown on a hanger. The member must be present and participate at the Fashion Revue event if it was sewn for another person.

Make it with Wool

- Participants in this category will sew, knit or crochet garment/s from 100% wool, wool blend (minimum of 60% wool) fabric or yarn or specialty wool fiber. Specialty fibers include alpaca, angora, camel, cashmere, llama, mohair, and vicuna. The entire garment body (front, back and sleeves) must be wool or wool-blend fabric. Vests worn with a suit, sport coat, or blazer may have a back of non-wool fabric. Vests worn as a top layer or with outerwear coat/jacket must have a wool back. Trims, facings, interfacings, linings, and /or under linings may be fabrics other than wool or wool blends. Hand-spun yarns and /or hand-woven fabrics may be used and must meet above criteria.

Quilts

- Participants in this category will sew a quilt of any size and pattern. The quilt must have finished edges and may use any quilting method (machine, hand, hand-tie, etc.)
- The item/s in this category must be sewn by the member as part of a 4-H clothing and textiles project and shown by the member at the fashion Revue event.

CLASS 14

TRADITIONAL

Sec 1	Primary
Sec 2	Junior
Sec 3	Intermediate
Sec 4	Senior

CLASS 15

COSTUME CHALLENGE

Sec 1	Primary
Sec 2	Junior
Sec 3	Intermediate
Sec 4	Senior

CLASS 16

MAKE IT WITH WOOL

Sec 1	Primary
Sec 2	Junior
Sec 3	Intermediate
Sec 4	Senior

CLASS 17

SOFTIE CHALLENGE

Sec 1	Primary
Sec 2	Junior
Sec 3	Intermediate
Sec 4	Senior

CLASS 18

LEATHER CREATION

Sec 1	Primary
Sec 2	Junior
Sec 3	Intermediate
Sec 4	Senior

CLASS 19

CONSUMER SCIENCE \$50 LIMIT

Sec 1	Primary
Sec 2	Junior
Sec 3	Intermediate
Sec 4	Senior

WRITING YOUR FASHION REVUE COMMENTARY

Your commentary helps present you and your project to the audience. It should be about 60 words. Be sure to include your name, describe special features of the garment, and highlight interesting information about your project.

EXAMPLE – COMMENTARY OUTLINE

- Name
- Age
- Club
- Pattern(s) Used
- Description of Fabric: color, texture, fabric design
- Description of Garment: Look at pattern envelope for key words/features to describe your garment.
- What grade are you in? Which school?
- Where do you plan to wear the garment?
- Describe two items of special interest about yourself or your hobbies/activities.
- Think of adding what you enjoyed or didn't about making your project.

COMMENTARY EXAMPLES

- Kathleen Mitchell is in her second year of sewing with Pleasantville 4-H. Today she gleams in her sequined skirt. This forgotten remnant has a new life. It will be worn for Easter and as a casual around-the-town skirt. Its back slit lends a light and airy feeling. Matching the sequins was Kathleen's biggest challenge. (55 words)
- A nine-year member of Highland 4-H, Christina Williams is warm and stylish. The black, 100% wool jacket is fully lined, with princess seams and a center zipper. A "New York Collection" Vogue pattern was shortened to fit her style. The light blue wool skirt is lined with an invisible side zipper. Handmade blue Australian Crystal earrings add a finishing touch. (61 words)

WRITING YOUR COMMENTARY

1. What is special about your garment? Include a color description and describe how/where your garment will be worn. Use descriptive words to create an appealing mental picture. (Fashion catalogs; magazines, the pattern envelope, and advertisements can help you describe your garment's similar features.)
2. Briefly describe your garment, calling the audience's attention to details such as accessories.
3. Write. Get down all you want to say. Don't worry about length – yet.
4. Use alliterations (words beginning with the same sound, for example "flirty flounce" for ruffle and action words as much as possible. (A belt circles the waistline, a flaring hem etc.)
5. Tell the biggest problem you encountered in sewing the outfit and what new sewing techniques you learned. Saying you put in the sleeve six times can encourage some of your audience who are less skilled to keep on trying.
6. If there are two parts to your outfit, such as a coat and dress, mention the outer layer first.
7. Edit. Polish your narrative, cut out repetitious phrases and ideas. Keep sentences short and avoid tongue twisters. Aim for clear, concise phrases that create audience interest. The audience is there to learn about new fashion as well as to be entertained.
8. Practice modeling with your narration. Do you think of other things you might say? Re-edit and re-read. Be sure to write in the third person.
9. Add one sentence that talks about you, the model! Be sure to include your name and county or city, either in the beginning or ending of the narration.
10. Finally, cut the narration to about 60 words. Hyphenated words count as two words.
11. Write or tape your finished commentary on the Fashion Revue Supplemental Form.

General:

- Fiber Arts Project Members may enter only one (1) crochet & knit, embroidery or cross stitch item in a maximum of two (2) classes in this competition (i.e., a maximum of two (2) exhibits).
- Quilting Project Members may enter only one quilt and one quilt square in Classes 22 and 23 (i.e., a maximum of two (2) exhibits).
- Quilt squares do not need to be bound or backed.
- All items must have been made between October 2022 and the present time.

CLASS 20 CROCHET & KNIT

Sec 1 Primary
 Sec 2 Junior
 Sec 3 Intermediate
 Sec 4 Senior

CLASS 23 QUILTS

Sec 1 Primary
 Sec 2 Junior
 Sec 3 Intermediate
 Sec 4 Senior

CLASS 21 EMBROIDERY

Sec 1 Primary
 Sec 2 Junior
 Sec 3 Intermediate
 Sec 4 Senior

CLASS 24 QUILT SQUARES

Sec 1 Primary
 Sec 2 Junior
 Sec 3 Intermediate
 Sec 4 Senior

CLASS 22 CROSS STITCH

Sec 1 Primary
 Sec 2 Junior
 Sec 3 Intermediate
 Sec 4 Senior

CLASS 24 APRON CHALLENGE

Sec 1 Primary
 Sec 2 Junior
 Sec 3 Intermediate
 Sec 4 Senior

Recipe Review

Competition Rules

General:

- **Foods & Nutrition Project Members** may enter no more than one (1) recipe in up to two (2) classes in this competition. Recipe must be attached to your entry form. **Please bring a copy of your RECIPE with your entry for the day of HED. Copy of recipe is required to not be disqualified.**
- **Food Preservation Project Members** may enter only one recipe in this competition.
- All dishes must be prepared with fresh ingredients (**no mixes may be used**).
- **PLEASE NOTE: FOOD SAFETY** is a primary consideration in this competition. **NO REFRIGERATORS OR OVENS ARE AVAILABLE.**
 - Foods that need to be refrigerated must be presented in an ice bath and the ice bath must be maintained throughout the day or the item will be **DISQUALIFIED (NOT JUDGED)**. Exhibitors should plan to bring an ice chest and ice for the servings that will be shared during the Public Tasting.
 - Casseroles or other dishes which require an oven to maintain an even food temperature throughout the day are

NOT allowed. If you choose to bring these items, they will be **DISQUALIFIED (NOT JUDGED)**.

- **The use of CROCK POTS is REQUIRED for foods that need to be served warm.** Electrical outlets will be provided for crock pots.
- Participants are **REQUIRED** to provide enough food for a minimum of 6 tastings of each recipe. Participants must provide their own serving forks, spoons or knife to cut items as needed. Forks/spoons and plates will be provided for the judging.
- Participants remaining portions of each recipe will be out to share during the Public Tasting. Please identify any dishes or serving utensils on the underside with your last name. Names should not be visible. We will not be adding names to dishes or serving utensils at the event.
- Plates and forks/spoons will be provided for the Public Tasting.
- Parents/Leaders will be able to help youth members carry in the necessary equipment. You will then be asked to leave the work area.
- Members must do their own work setting up and cleaning up.
- Members are responsible for ensuring your entry(s) arrive at and are set up for the Public Tasting.
- Once the Public Tasting is complete, parents/leaders may help youth members carry equipment out.

<p>Class 26 Preserves</p> <ul style="list-style-type: none"> • Cooking Project Members may enter one (1) recipe in this class. One jar of the recipe must be provided for the judges to sample. Nothing that requires heating before serving may be entered. • Preserves entered in this class may include any recipe canned by the 4-H member between October 2021 and the present time. Examples are jam, jelly, pickled cucumbers or other pickled vegetable or canned fruit. 	<p>Class 27 Finger Foods</p> <ul style="list-style-type: none"> • Cooking Project Members may enter a finger food (appetizer) in this class. • All ingredients must be fresh (may not be made from a mix). 	
<p>Class 28 Main Dishes</p> <ul style="list-style-type: none"> • Cooking Project Members may enter a main dish in this class. • Main dishes may not be made from a mix, but may use some pre-prepared ingredients (i.e., onion soup mix, etc.). 	<p>Class 29 Sweet Endings (Desserts)</p> <ul style="list-style-type: none"> • Cooking Project Members may enter a dessert (pie, cake, cookies, brownies, etc.) in this class. • All ingredients must be fresh (may not be made from a mix). 	<p>Class 30 and Class 31 Pie and Chili and Corn Bread</p> <ul style="list-style-type: none"> • Any member may enter these classes. • Pie crust and filling must be homemade • Crockpots may be used to keep chili warm. Corn bread may not be a mix from a box. • Recipe must be supplied for both chili and corn bread recipes.

CLASS 26 PRESERVES

Sec 1	Primary
Sec 2	Junior
Sec 3	Intermediate
Sec 4	Senior

CLASS 29 SWEET ENDINGS (DESSERTS)

Sec 1	Primary
Sec 2	Junior
Sec 3	Intermediate
Sec 4	Senior

CLASS 27 FINGER FOODS

Sec 1	Primary
Sec 2	Junior
Sec 3	Intermediate
Sec 4	Senior

CLASS 30 PIE

Sec 1	Primary
Sec 2	Junior
Sec 3	Intermediate
Sec 4	Senior

CLASS 30 CHILI AND CORN BREAD

CLASS 28 MAIN DISHES

Sec 1	Primary
Sec 2	Junior
Sec 3	Intermediate
Sec 4	Senior

Sec 1	Primary
Sec 2	Junior
Sec 3	Intermediate
Sec 4	Senior

Sewing Construction

Competition Rules

General:

- **Clothing & Textiles Project Members** may enter only one (1) garment or outfit in a maximum of two (2) classes in this competition (i.e., a maximum of one garment or outfit may be entered in Classes 14-17). Only one (1) accessory may be entered in Class 35.
- **Any 4-H Project member may enter Class 19** Consumer Science. Purchase \$50 limit.
- **Any 4-H Project Member may enter Class 25 (Apron Challenge)**. Construct any apron pattern.
- To participate in the Fashion Revue Competition, the garment or outfit you plan to model **must** be entered in the Sewing Construction Competition.
- Please be sure you enter the correct age division for the Sewing Construction Competition. See below.

Age Divisions:

Primary	5 to 8 years old as of December 31 of the current year.
Junior	9-10 years old as of December 31 of the current year.
Junior Novice	9 to 10 years old as of December 31 of the current year and in their 1st or 2nd year of the Clothing & Textiles project.
Intermediate	11 to 13 years old as of December 31 of the current year.
Intermediate Novice	11 to 13 years old as of December 31 of the current year and in their 1st or 2nd year of the Clothing & Textiles project.
Senior	14 -19 years old as of December 31 of the current year. A member is eligible to participate until December 31 of the calendar year in which they turn 19.
Senior Novice	14-19 years old as of December 31 of the current year and in their 1 st or 2nd year of the Clothing & Textiles project. A member is eligible to participate until December 31 of the calendar year in which they turn 19.

Performance Objectives – All Garments:

- Double sew sleeves.
- Double sew crotch of slacks/pants.
- Clip in curves between notches or trim.
- Clip all threads.
- Finish seams (pinked, zigzagged, surged).
- All clothing should be clean. It may show signs of wear – 4-H clothing is made to be worn.
- All garments should be pressed.

CLASS 14

TRADITIONAL

Sec 1	Primary
Sec 2	Junior
Sec 3	Junior Novice
Sec 4	Intermediate
Sec 5	Intermediate Novice
Sec 6	Senior
Sec 7	Senior Novice

CLASS 17

SOFTIE CHALLENGE

Sec 1	Primary
Sec 2	Junior
Sec 3	Junior Novice
Sec 4	Intermediate
Sec 5	Intermediate Novice
Sec 6	Senior
Sec 7	Senior Novice

CLASS 15

COSTUME CHALLENGE

Sec 1	Primary
Sec 2	Junior
Sec 3	Junior Novice
Sec 4	Intermediate
Sec 5	Intermediate Novice
Sec 6	Senior
Sec 7	Senior Novice

CLASS 18

LEATHER CREATIONS

Sec 1	Primary
Sec 2	Junior
Sec 3	Junior Novice
Sec 4	Intermediate
Sec 4	Senior
Sec 7	Senior Novice

CLASS 16 MAKE IT WITH WOOL

Sec 1 Primary
Sec 2 Junior
Sec 3 Junior Novice
Sec 4 Intermediate
Sec 5 Intermediate Novice
Sec 6 Senior
Sec 7 Senior Novice

CLASS 19 LEATHER CREATIONS

Sec 1 Primary
Sec 2 Junior
Sec 3 Junior Novice
Sec 4 Intermediate
Sec 5 Intermediate Novice
Sec 6 Senior
Sec 7 Senior Novice

Cake Decorating

Competition Rules

Cooking project members:

- This competition is open to Cooking Project Members enrolled in a foods project.
- **Must use real cake! No Mixes!** Cakes will be cut and eaten during public tasting.

CLASS 39 CAKE DECORATING

Sec 1 Primary
Sec 2 Junior
Sec 3 Intermediate
Sec 4 Senior

CLASS 40 CUPCAKE DISPLAY

Sec 1 Primary
Sec 2 Junior
Sec 3 Intermediate
Sec 4 Senior

Scrapbooking

Competition Rules

Scrapbooking Project Members

- This competition is open to 4-H Scrapbooking project members.
- **Scrapbook entries must have been created between October 2022 and HED 2023.**

CLASS 41 SCRAPBOOKING

Sec 1 Primary
Sec 2 Junior
Sec 3 Intermediate
Sec 4 Senior

2023 State Fashion Revue

State Fashion Revue to be held May 27, 2023 at the University of California at Davis.

Traditional, Consumer Science Purchased, \$50.00 limit, and Costume entries must have received County Winner from each age division in these three categories may enter State Fashion Revue.

Make it with Wool, Softie Challenge, Leather Creations, and Quilts categories do not need to qualify at a County 4-H Fashion Revue or other qualifying event.

Age Divisions (Age as of 12-31-22)

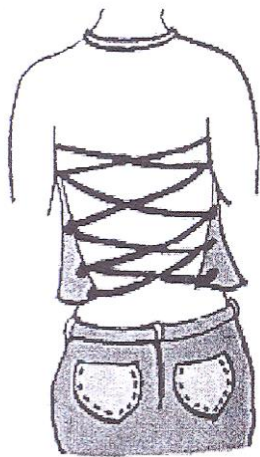
Junior, ages 9-10
Intermediate, ages 11-13
Senior, ages 14-18

Members may enter two categories at State Fashion

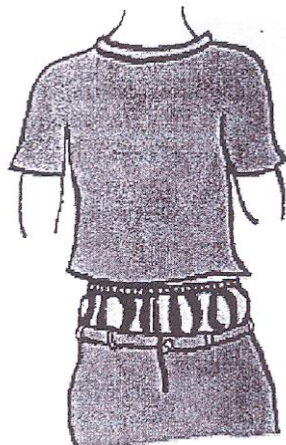
Registration Will Open Spring 2023

Cash awards for State Fashion Revue TBD

Fashion Revue Dress Code Violations



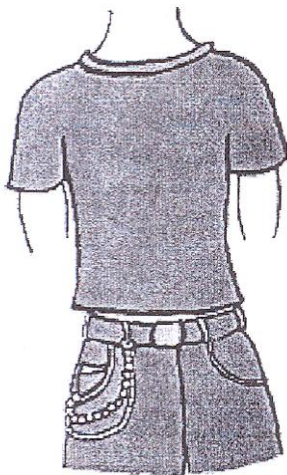
Backless Shirt



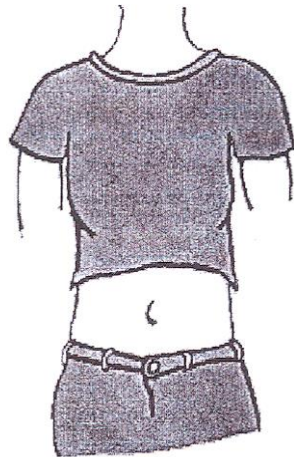
Visible Underwear



Poorly Placed Logo



Excess Accessories



Visible Midriff



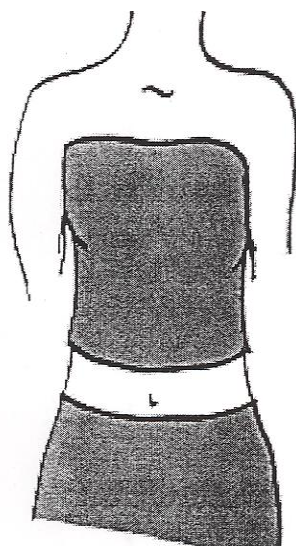
Visible Cleavage



Revealing Pants



Inappropriate Logo



Tube Top

Clothes shall be sufficient to conceal undergarments at all times. See-through or fish-net fabrics, low cut tops, bare midriffs and skirts or shorts shorter than mid-thigh are prohibited. No lingerie or look-alike lingerie allowed.