

Getting organized for Ag Order 4.0

UC Irrigation and Nutrient Meeting

February 21, 2023



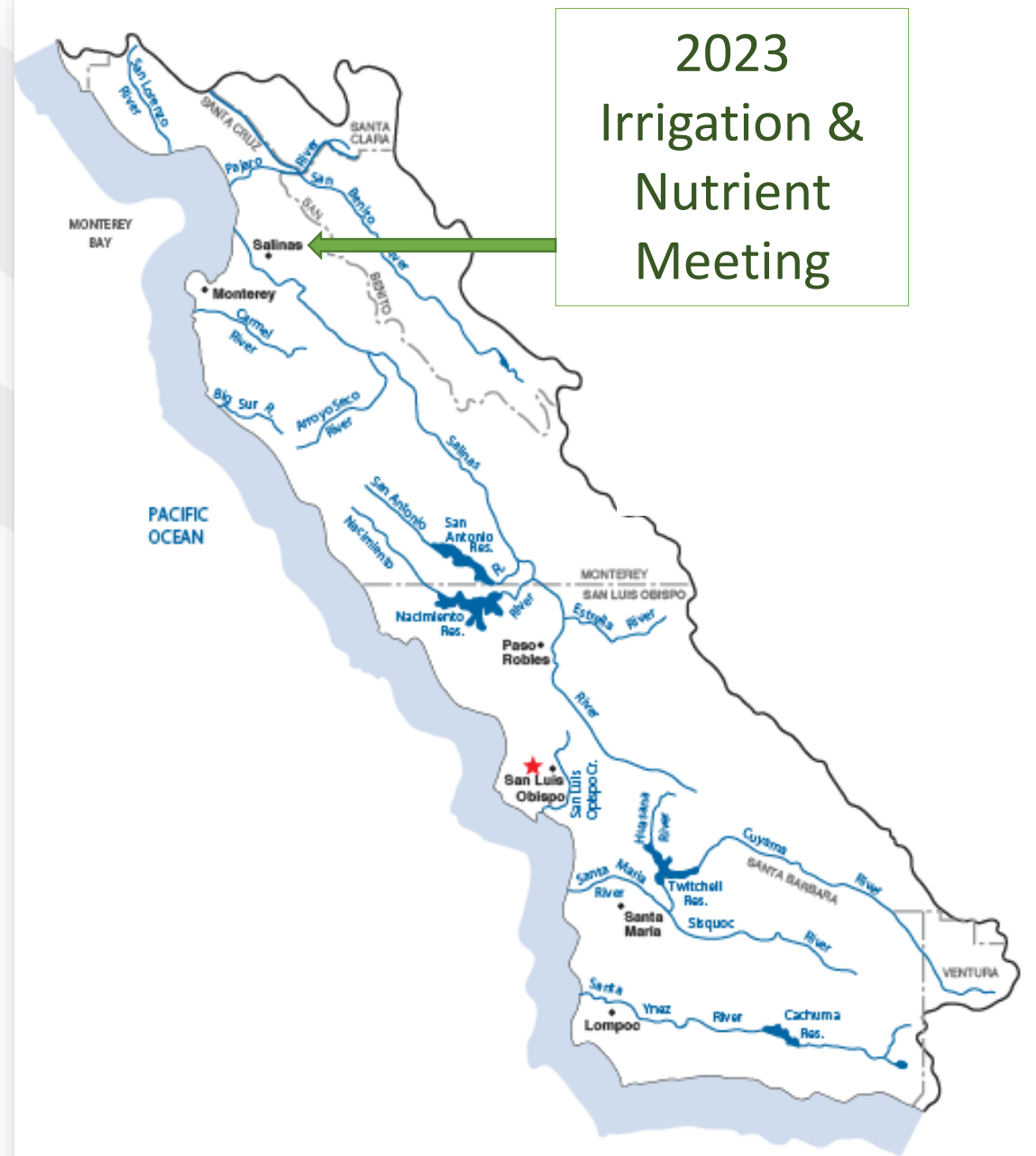
Central Coast Water Board, Irrigated Lands Program (ILP)

Overview


- Introduction (5 mins)
- Requirement Checklist (15 mins)
- Online Interactive Tool – Coming soon! (5 mins)
- Q&A (5 mins)



Central Coast Water Board (Region 3)



2023
Irrigation &
Nutrient
Meeting



Irrigated Lands Program
(ILP)



Agricultural Order 4.0
(Ag Order 4.0)



Year 2023 Requirement Checklist for the Irrigated Lands Program

Ranch Name:

Global ID/AGL:

Helpful Links:

- Irrigated Lands Program (ILP) Website: https://www.waterboards.ca.gov/centralcoast/water_issues/programs/ilp/
- GeoTracker Login Website: <https://geotracker.waterboards.ca.gov/esi/login>

General Requirements:

✓	REQUIREMENT	DEADLINE	WHERE/HOW TO SUBMIT	RESOURCE
	Pay third-party program membership fees (includes reduced annual State Water Board permit fees)	January 15	Pay the invoice sent by Preservation, Inc.	Go to ILP website and click on "Annual Irrigated Lands Permit Fees"
	Submit Annual Compliance Form (ACF)	March 1	Log into GeoTracker and click on [EDIT COMPLIANCE INFO] link	Go to ILP website and click on "Annual Compliance Form"
	Update electronic Notice of Intent (eNOI) after any change to enrollment information	Within 60 Days	Log into GeoTracker and click on [EDIT OPERATION INFORMATION] and [EDIT RANCH INFO] links	Go to ILP website and click on "Enrollment"
	Develop, implement, and maintain a Farm Water Quality Control Plan (Farm Plan)	Ongoing	Keep on farm and submit if requested by Central Coast Water Board	Go to ILP website and click on "Farm Water Quality Control Plan"

Groundwater Protection Requirements:

Note: log into GeoTracker account; the Groundwater Phase Area is shown next to each ranch in the "GW PHASE AREA" column.

✓	REQUIREMENT	DEADLINE	WHERE/HOW TO SUBMIT	RESOURCE
	Groundwater Phase Area 1 only: maintain Irrigation and Nutrient Management Plan (INMP) records.	January 1 - December 31	Maintain records in Farm Plan to submit INMP report in March 2024	Go to ILP website and click on "Total Nitrogen Applied Report / Irrigation and Nutrient Management Summary Report"
	Groundwater Phase Areas 2 & 3: maintain Total Nitrogen Applied (TNA) records	January 1 - December 31	Maintain records in Farm Plan to submit TNA report in March 2024	Go to ILP Website and click on "Groundwater Quality Monitoring and Reporting"
	Submit 2022 TNA Report (<i>only if previously required to report TNA under Ag Order 3.0</i>)	March 1	Refer to and follow Preservation, Inc.'s instructions	
	Conduct water sampling for all on-farm domestic wells and the primary irrigation well	March 1 - May 31	Refer to and follow Preservation, Inc.'s instructions	
	Notify all domestic well users of well sampling results and health risk information	Within 3 business days of receiving results	Notify all domestic well users using the summary template provided in the resource	
	Update eNOI to confirm notifications to domestic well users	Within 30 days of receiving results	Log into GeoTracker, click on [EDIT RANCH INFO] link, and update section XI	

A photograph of a field of green leafy vegetables, possibly cabbages, under a soft, hazy sky. The text "General Requirements" is overlaid in white, centered on the image. A thin white horizontal line is positioned below the text.

General Requirements

Pay third-party program membership fees

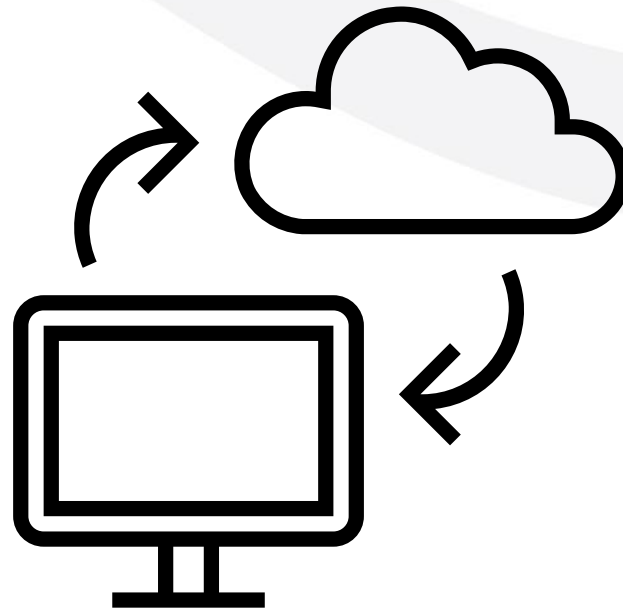


Submit Annual Compliance Form (ACF) by March 1



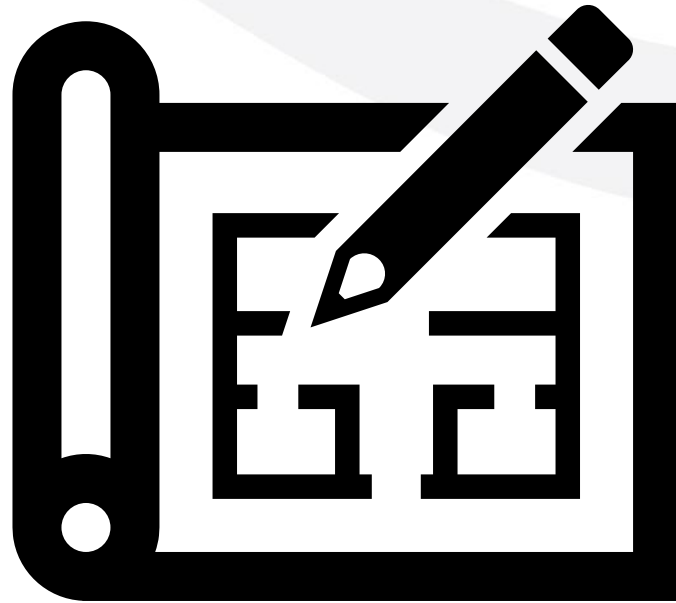
Email AgNOI@waterboards.ca.gov

Update electronic Notice of Intent (eNOI) after any change to enrollment information within 60 days



Email AgNOI@waterboards.ca.gov

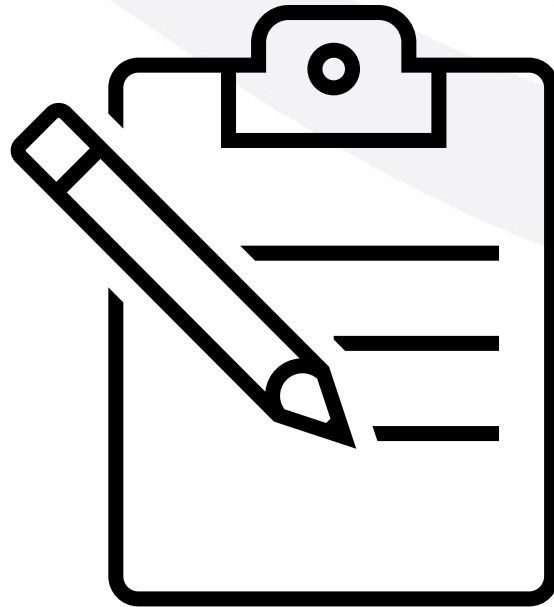
Develop, implement, and maintain Farm Plan





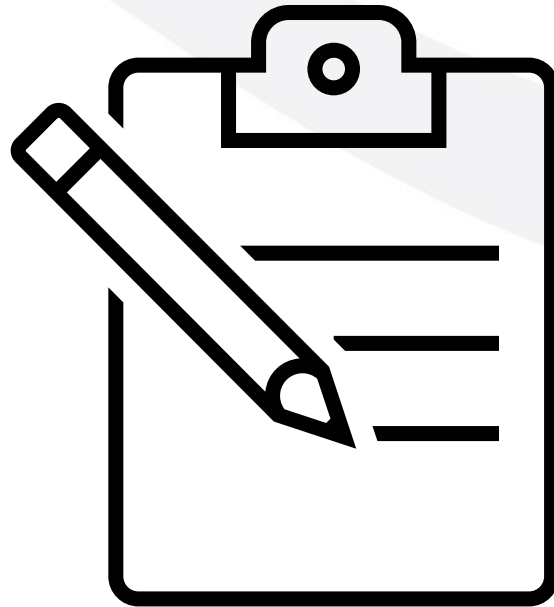
Groundwater Protection Requirements

Groundwater Phase Area **1 only**:
Maintain Irrigation and Nutrient Management Plan
(INMP) records for 2023



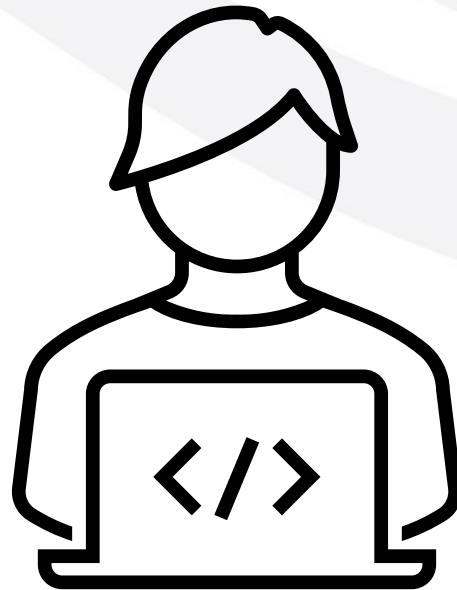
Submit INMP report on March 1, 2024

Groundwater Phase Areas 2 & 3:
Maintain Total Nitrogen Applied (TNA) records for
2023



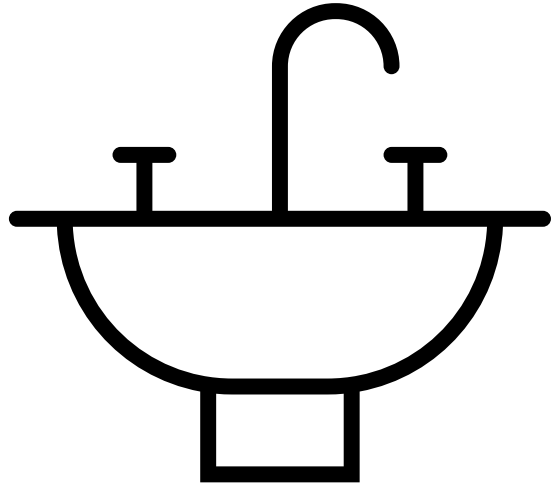
Submit TNA report on March 1, 2024

Growers previously required to report TNA
under Ag Order 3.0:

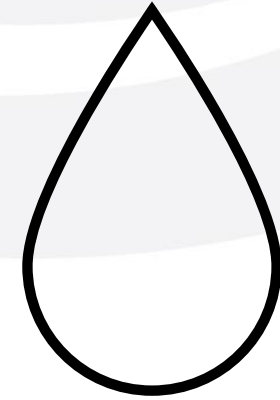


Submit TNA report on March 1, 2023

Conduct water sampling anytime between
March-May for:

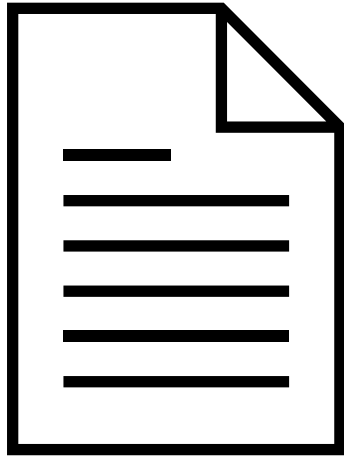


All on-farm
domestic wells



Primary
irrigation well

Notify all domestic well users of:

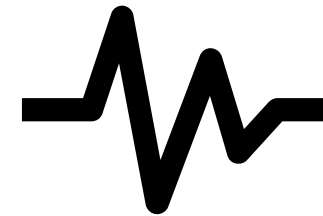
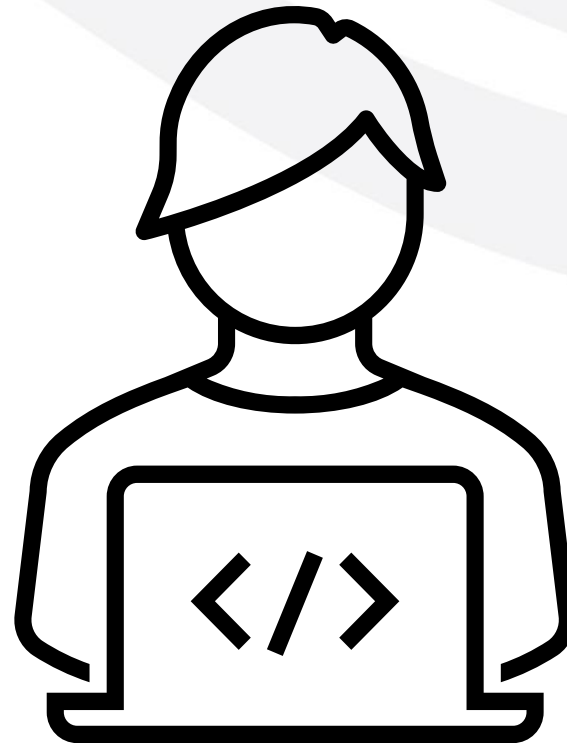


Well sampling
results



Health risk
information

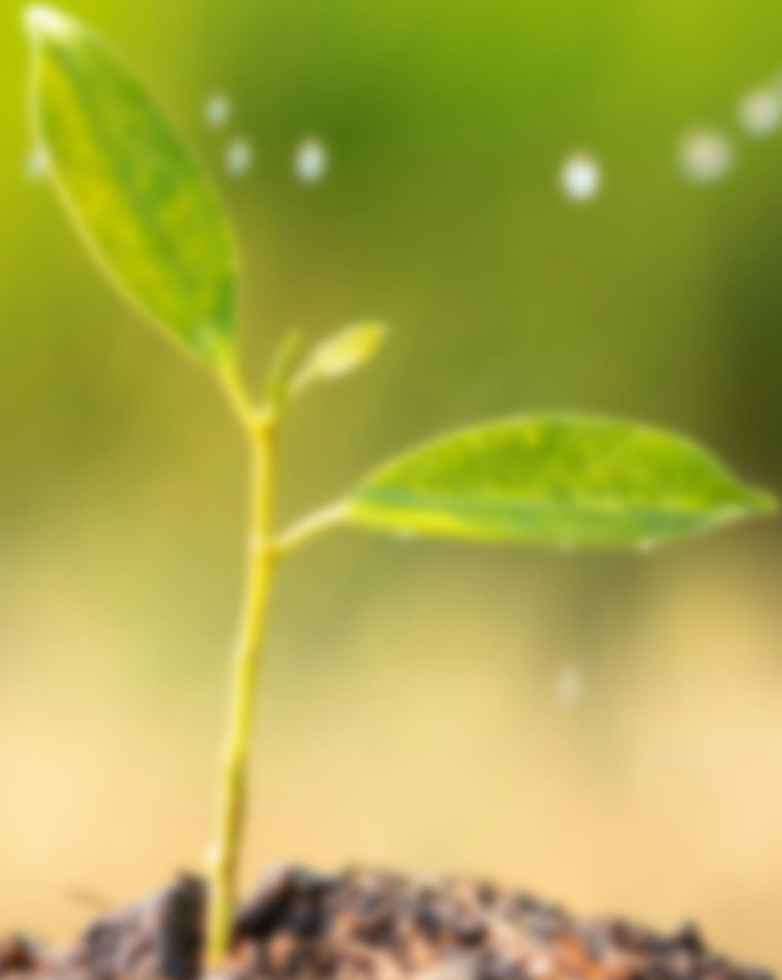
Update eNOI to confirm notifications to domestic well users



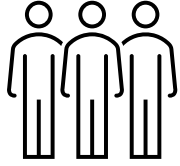


Groundwater & Surface Receiving Water Trend Monitoring

Interactive
Requirement Checklist
Coming Soon!



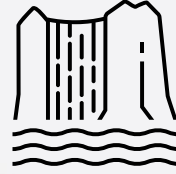
Pres. Inc.
Member?



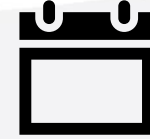
GW Phase
Area



SW Priority
Area



Year



Yes

1

1

2023

No

2

2

2024

3

3

2025

4

2026

2027

2028

Groundwater Phase Area and Surface Water Priority Area

Log onto GeoTracker

Don't know how? Contact
Irrigated Lands Program:

- AgNOI@waterboards.ca.gov
- (805)549-3148

Groundwater Phase Area and Surface Water Priority Area

Log onto GeoTracker

Don't know how? Contact
Irrigated Lands Program:

- AgNOI@waterboards.ca.gov
- (805)549-3148

CONTACT SITE [HELPDESK](#)

STATE WATER RESOURCES CONTROL BOARD
GEOTRACKER ESI

Username:

Password:

[Login to GeoTracker ESI](#)

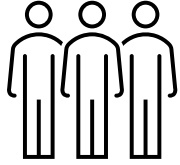
If you do not have a username and password, request one using our [Password Request](#) page.
Forgot your password? Have a password reset link [emailed](#) to you.

Groundwater Phase Area and Surface Water Priority Area

View your GW Phase Area and SW Priority Area next to *each ranch*
Note: these #s depend on each ranch's location and can be different for ranches in the same operation

Happy Orchards							
EDIT OPERATION INFORMATION				PRINT OPERATION FORM			
	<u>RANCH / FARM NAME</u>	<u>ADDRESS</u>	<u>CITY</u>	<u>IRRIGATED ACRES</u>	<u>TAILWATER ACRES</u>	<u>GW PHASE AREA</u>	<u>SW PRIORITY AREA</u>
[EDIT RANCH INFO]	STRAWBERRY FIELDS	ABBAY LANE	SALINAS	80	8	1	1
[EDIT RANCH INFO]	PEACH RANCH	PRINCESS RD.	SALINAS	65	6.5	2	4

Pres. Inc.
Member?



GW Phase
Area



SW Priority
Area



Year



Yes

No

1

2

3

1

2

3

4

2023

2024

2025

2026

2027

2028

GENERAL REQUIREMENTS

Requirement	Deadline	Where/How to Submit	Resource
Pay third-party program membership fees (includes reduced annual State Water Board permit fees)	January 15	Pay the invoice sent by Preservation, Inc.	Learn about State Water Board permit fees
Submit Annual Compliance Form (ACF)	March 1	Log onto GeoTracker and click on [EDIT COMPLIANCE INFO] link	View instructions for submitting the ACF
Update electronic Notice of Intent (eNOI) after any change to enrollment information	Within 60 Days	Log into GeoTracker and click on [EDIT OPERATION INFORMATION] and [EDIT RANCH INFO] links	Learn about who needs to enroll in the Irrigated Lands Program
Maintain membership with Preservation, Inc. and meet third-party program expectations	Ongoing	(831)761-8644 or support@ccwqp.org	Visit Preservation, Inc.'s website
Develop, implement, maintain, and update a Farm Water Quality Control Plan (Farm Plan)	Ongoing	Keep on farm and submit if requested by Central Coast Water Board	Learn about the Farm Plan requirement

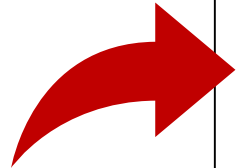
GROUNDWATER PROTECTION REQUIREMENTS

Requirement	Deadline	Where/How to Submit	Resource
Maintain Total Nitrogen Applied (TNA) records	January 1 - December 31	Maintain records in Farm Plan to submit INMP report next year	View instructions and resources for maintaining TNA records
Submit 2022 TNA Report (only if previously required to report TNA under Ag Order 3.0)	March 1	Refer to and follow Preservation, Inc.'s instructions	View instructions and resources for submitting a TNA report
Conduct water sampling for all on-farm domestic wells and the ranch's primary irrigation well	March 1 - May 31	Refer to and follow Preservation, Inc.'s instructions	View instructions and resources for well monitoring
Provide all domestic well users with summary of well sampling results and health risk information	Within 3 business days of receiving results	Notify all domestic well users using the summary template	View instructions and resources for well monitoring
Update eNOI to confirm notifications to all domestic well users	Within 30 days of receiving results	Log into GeoTracker, click on [EDIT RANCH INFO] link, and update section XI	View instructions and resources for well monitoring

GROUNDWATER AND SURFACE RECEIVING WATER QUALITY TREND MONITORING

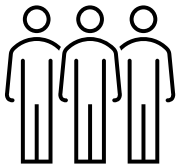

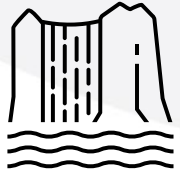
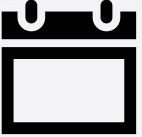
Preservation, Inc. will submit and implement the below work plans on behalf of their members. As such, members are not required to submit this information individually to the Water Board.

- Surface Receiving Water Quality Trends work plan
- Groundwater Quality Trend Monitoring work plan
- Follow-up Surface Receiving Water Implementation work plan



Type in your AGL...

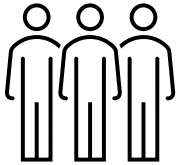
Stay Tuned!

Pres. Inc. Member?	GW Phase Area	SW Priority Area	Year
			
Yes	1	1	2023
No	2	2	2024
	3	3	2025
		4	2026
			2027
			2028

AGL02000123

Stay Tuned!

Pres. Inc. Member?



Yes

No

GW Phase Area

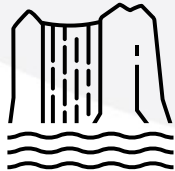


1

2

3

SW Priority Area



1

2

3

4

Year



2023

2024

2025

2026

2027

2028

How to access the tool

- Look out for an email from AgNOI@waterboards.ca.gov
- It will be on our website soon!

CALIFORNIA
WATER BOARDS
Central Coast - R3

Regional Board Programs News Room Board Decisions Public Notices Water Boards

Welcome to the Irrigated Lands Program (ILP)

The Central Coast Water Board regulates discharges from irrigated agricultural lands to protect surface water and groundwater using Order No. R3-2021-0040, General Waste Discharge Requirements for Discharges from Irrigated Lands (also known as the Agricultural Order), that applies to owners and operators of irrigated land used for commercial crop production. The Central Coast Water Board is focusing on priority water quality issues, such as pesticides and toxicity, nutrients, and sediments – especially nitrate impacts to drinking water sources. Staff is prioritizing efforts in the major agricultural areas of the region - the Salinas River, Santa Maria, and Pajaro River watersheds.

Agricultural Order Requirements

Summary of Requirements: Compliance Calendar

Need to Enroll? Submit a New eNOI

Already Enrolled? Log in to GeoTracker

✓ Requirement Checklist

Tutorials & Instructions

Contact us! We are all working towards the same goal.

- Irrigated Lands Program
 - AgNOI@waterboards.ca.gov
 - (805)549-3148
- Preservation, Inc.
 - support@ccwqp.org
 - (831)761-8644
 - <https://ccwqp.org/>

