



Ag Order 4.0 Requirements for 2024

Central Coast Water Quality Preservation, Inc.

Sarah Lopez, Executive Director

www.ccwqp.org

02/20/24
UCCE Irrigation &
Nutrient Meeting
Salinas, CA

Contact Info

ENGLISH

- Phone: 831-761-8644
- Support: Support@ccwqp.org
- Invoices: Office@ccwqp.org
- Web: www.ccwqp.org

ESPAÑOL

- Telefono: 831-240-9533
- Email: Support@ccwqp.org
- Web: www.ccwqp.org

 ← haz clic para español

TEMPORARY INFO (THIS WEEK ONLY)

- Email: ccagwaterquality@gmail.com
- Web: www.ccwqp.net
- Phone: 831-761-8644 o 831-240-9533

Outline

- ▶ Important 2024 compliance dates
- ▶ Future Surface Water “Follow-Up” program
- ▶ Total Nitrogen Applied (TNA, and INMP) reporting

Who is Preservation, Inc?



*In the Central Valley,
groups like
Preservation, Inc. are
called “Coalitions”*

We are hiring!

- *INM Specialist*
- *Ag Water Quality Scientist*
- *Field Technicians*

*Indeed.com or
www.ccwqp.org/careers*

Who needs to enroll in the Ag Order?

- ▶ All commercial, irrigated farms on the Central Coast
 - ▶ If you irrigate your crop and sell it (even at a farmers market)
- ▶ All acreage within Santa Cruz, Monterey, San Benito, San Luis Obispo, and Santa Barbara Counties
- ▶ Also the Pescadero area in San Mateo County
- ▶ Also southern Santa Clara County (Morgan Hill, San Martin, Gilroy, etc.)
- ▶ Includes nurseries and greenhouses (produce, flowers, starts, etc)
 - ▶ Cannabis growers enroll in Cannabis Order

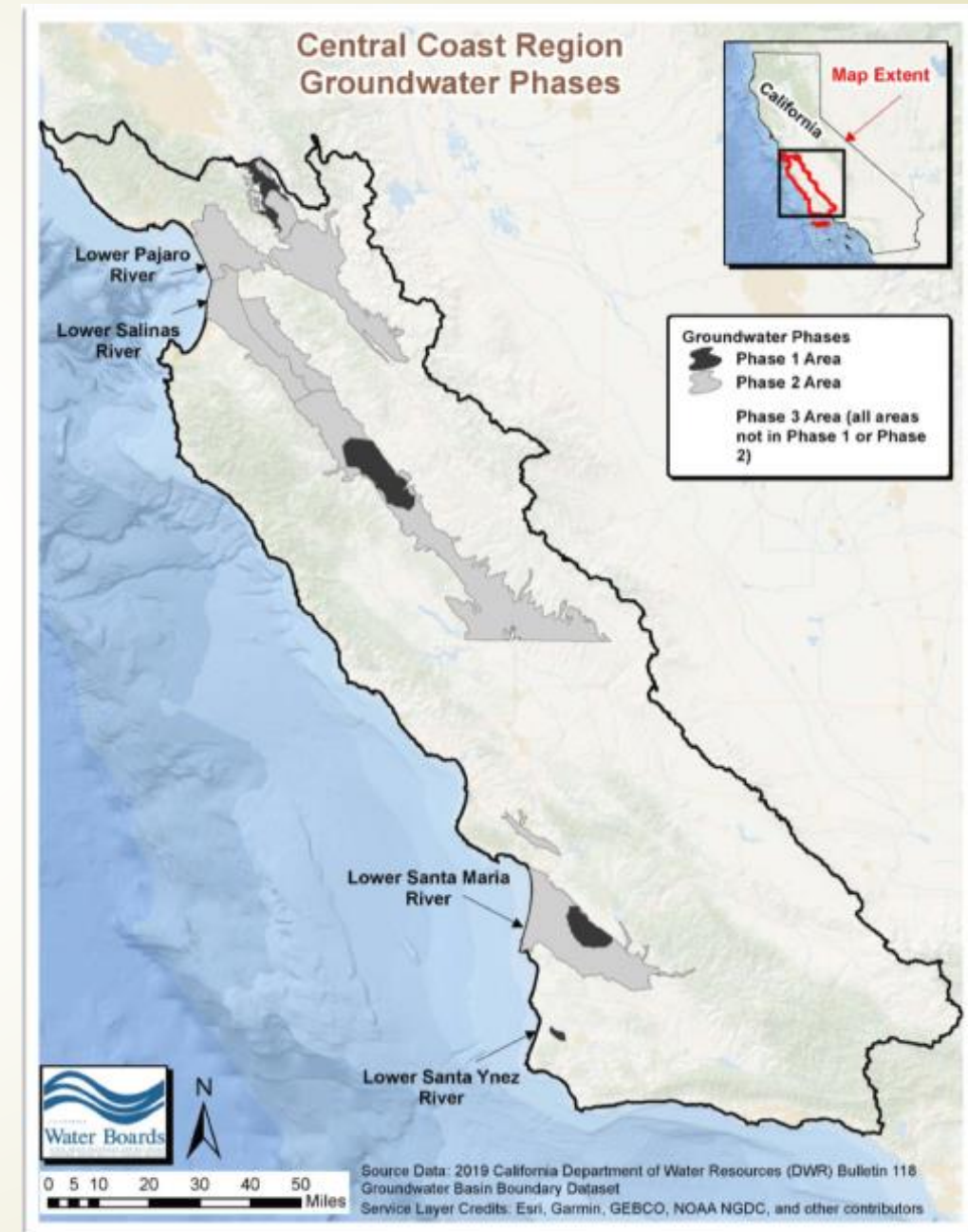
www.ccwqp.org/how-to-enroll (this week: www.ccwqp.net/how-to-enroll)

Ag Order Compliance Dates in 2024

- ▶ Pay Third Party dues & State Water Board annual fee
 - ▶ Due **12/15/23**; Membership was reported to WB on 2/1/24
 - ▶ Non-members will owe State WB \$673 or \$37/acre + individ. compliance
- ▶ **March 1st**, annually: Update Annual Compliance Form (ACF) in eNOI on GeoTracker (if no changes, log in & save/submit)
- ▶ **March 1st**, annually: Submit TNA form (all ranches) or INMP form (“Phase 1 area” ranches only)
- ▶ **March 1st – May 31st** : Reported well sampling of all on-farm domestic and dual-purpose wells + primary irrigation well
 - ▶ Notify domestic well users of results within 3 business days **+ eNOI**

“Phase Areas” in Ag Order 4.0

- ▶ Ranches in Phase Area 1 must report INMP by March 1st, 2024 for their 2023 crops
- ▶ All other ranches must report TNA by March 1st, 2024 for their 2023 crops
- ▶ www.ccwqp.org/phaseareamaps for close-up views of Phase 1 areas



Finding your ranch's Phase Area in the eNOI

STATE WATER RESOURCES CONTROL BOARD
GEOTRACKER ESI

TOOLS

- Upload EDD
- Check EDD
- VVL Search Tool
- Edit Field Points
- Other Tools
- Funding Programs
- Update eNOI Forms
- Add Program
- Guides / Resources
- Contact Us
- Account Information
- Logout

CAROLINE WEBSTER TEST ACCOUNT

[EDIT OPERATION INFORMATION](#) [PRINT OPERATION FORM](#) [ADD RANCH / FARM TO THIS OPERATION](#)

RANCH / FARM NAME	ADDRESS	CITY	IRRIGATED ACRES	TAILWATER ACRES	GW PHASE AREA	SW PRIORITY AREA
[EDIT RANCH INFO] CAROLINE'S PEACH FARM	895 AEROVISTA PLACE, SUITE 101	SAN LUIS OBISPO	0	0	3	[EDIT COMPLIANCE INFO] [SUBMIT TNA REPORT]

Or contact
Support@ccwqp.org or
831-761-8644 for help

Or view street maps:
www.ccwqp.org/phaseareamaps

GW PHASE AREA

3

Surface Water Trends for Key Ag Indicators

Stream Flow		Count
Increasing	↑	4
Decreasing	↓	29
No Trend		23

- Sites with no trend are frequently dry
- All increasing trends are in north
- 9 of 23 decreasing trends are in the south

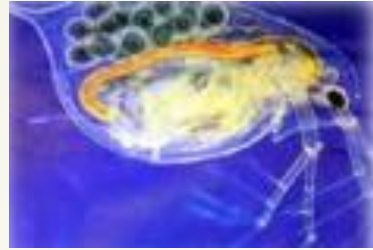
Turbidity		Count
Increasing	↑	11
Decreasing	↓	22
No Trend		23

- Most increasing trends are in south (SLO & SB counties)
- Most decreasing trends are north (Pajaro & Salinas watersheds)

Nitrate		Count (loads)
Increasing	↑	10 (5)
Decreasing	↓	15 (27)
No Trend		31 (24)

- Most increasing trends are in north (Pajaro & Salinas watersheds)
- Most decreasing trends are in south (SLO & SB counties)

Surface Water Trends for Aquatic Toxicity



Water Flea
(*Ceriodaphnia dubia*)



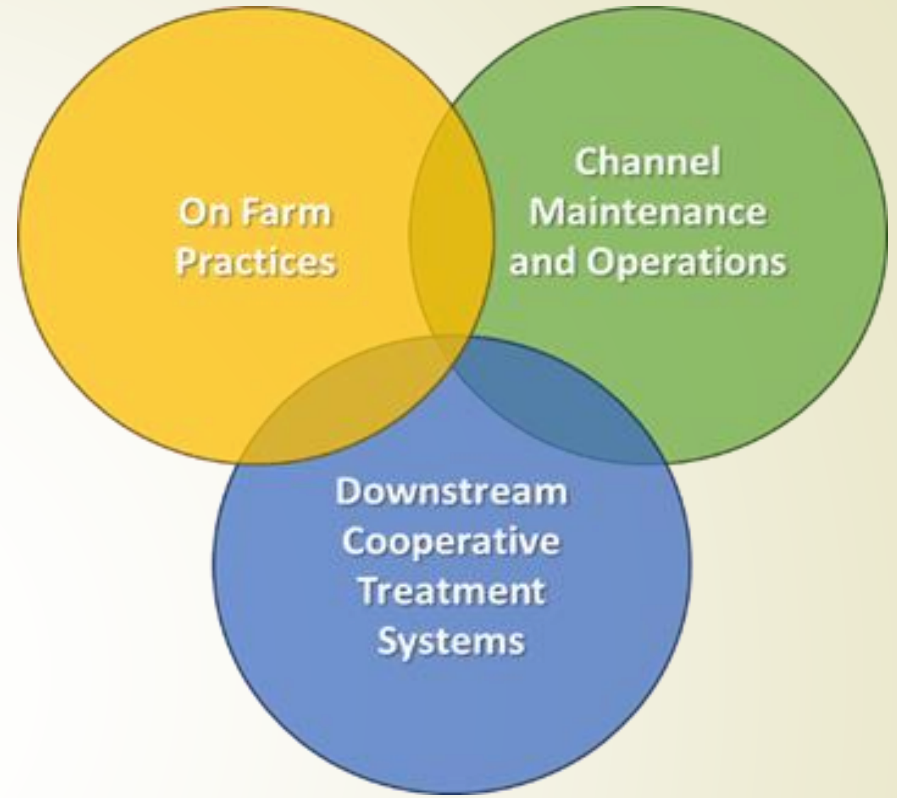
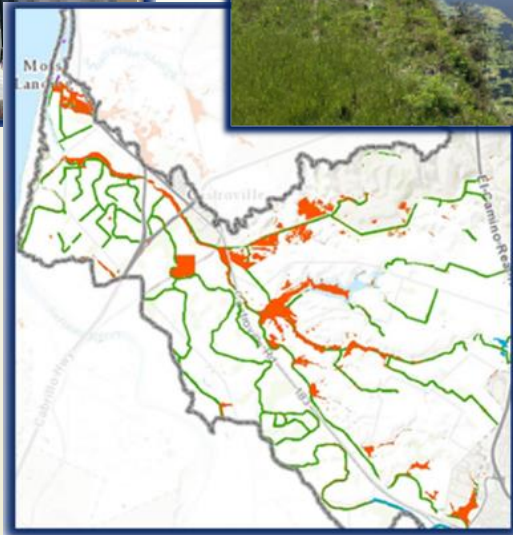
Midge Fly Larva
(*Chironomus dilutus*)

- Trends (2005-2022); Seasonal Mann Kendall test
- Majority of sites have no statistically significant trends
- Of the 10 statistically significant trends for toxicity in water, 9 were improving (increasing survival or reproduction rate over time)

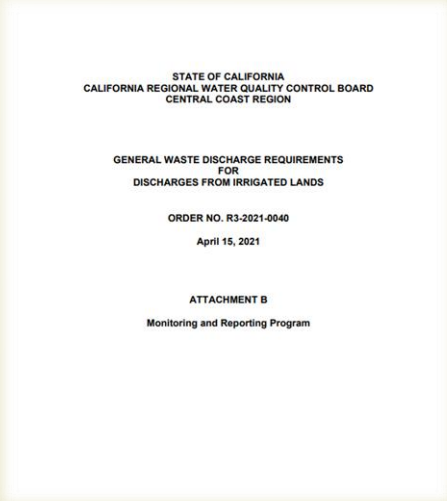
Surface Water Follow-Up Requirement

- ▶ Because despite some improving trends, most sites are still heavily impaired, and some have worsening trends
- ▶ First Work Plan due March 1st, 2024
 - ▶ All of Santa Maria area
 - ▶ East side of Lower Salinas Valley & much of the west side
- ▶ Ranch-level work will be required (even for Third Party members) – New/increased management actions
- ▶ 50% improvement from 2024 status by 2028
 - ▶ 25% improvement by 2026 (proposed as internal milestone)

Surface Water Follow-Up

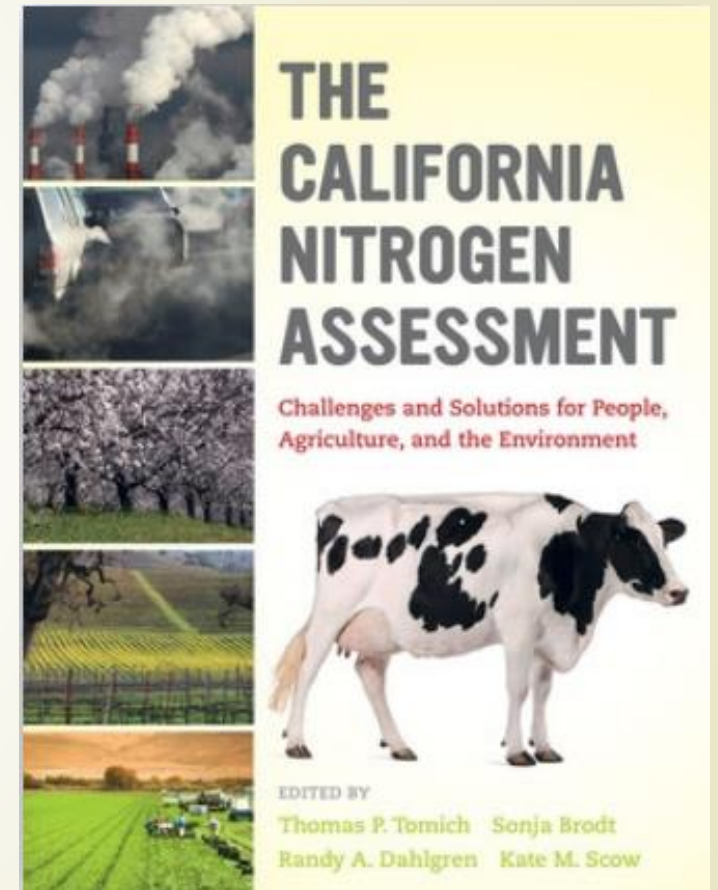


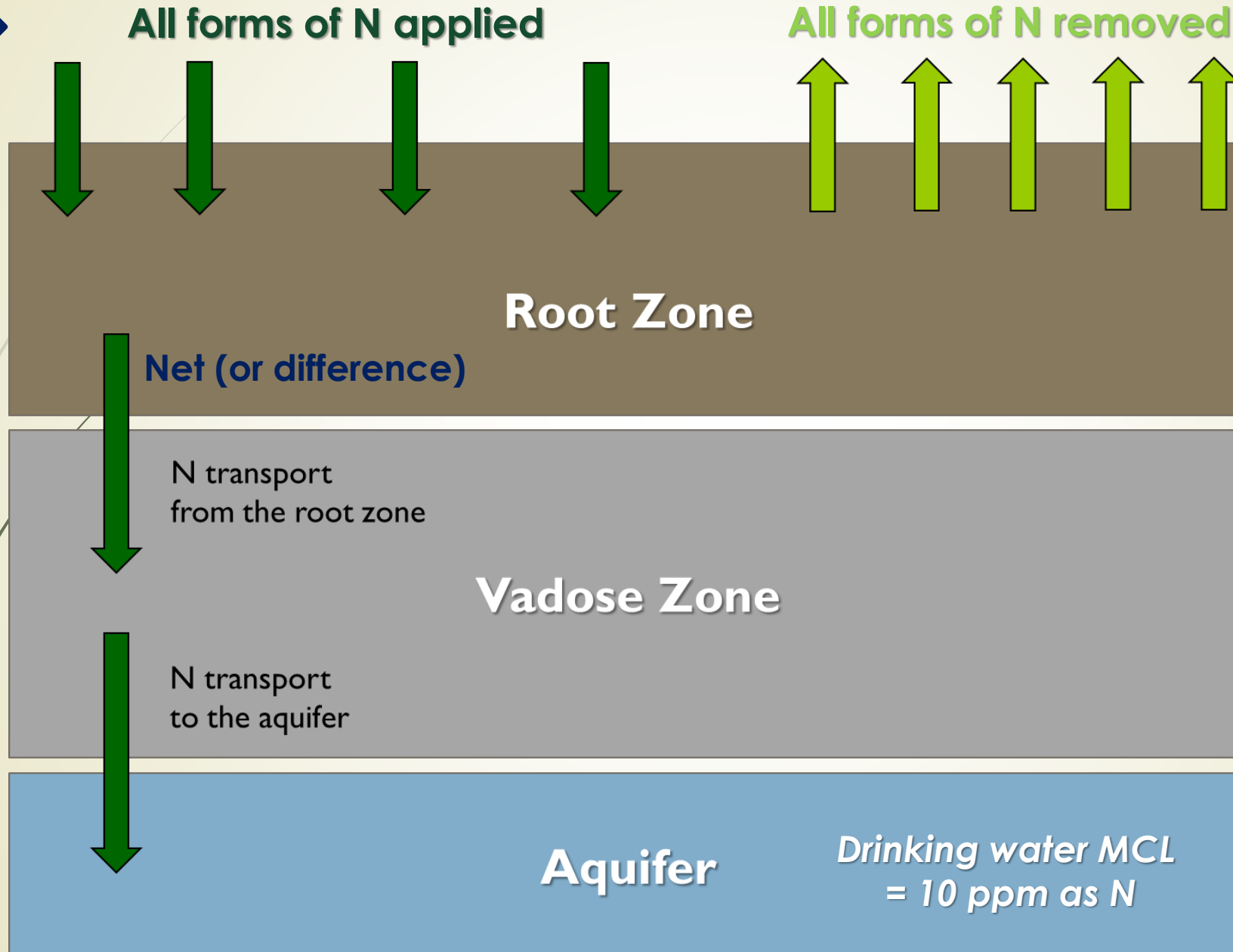
Ag Order 4.0
Attachment B
(MRP) →



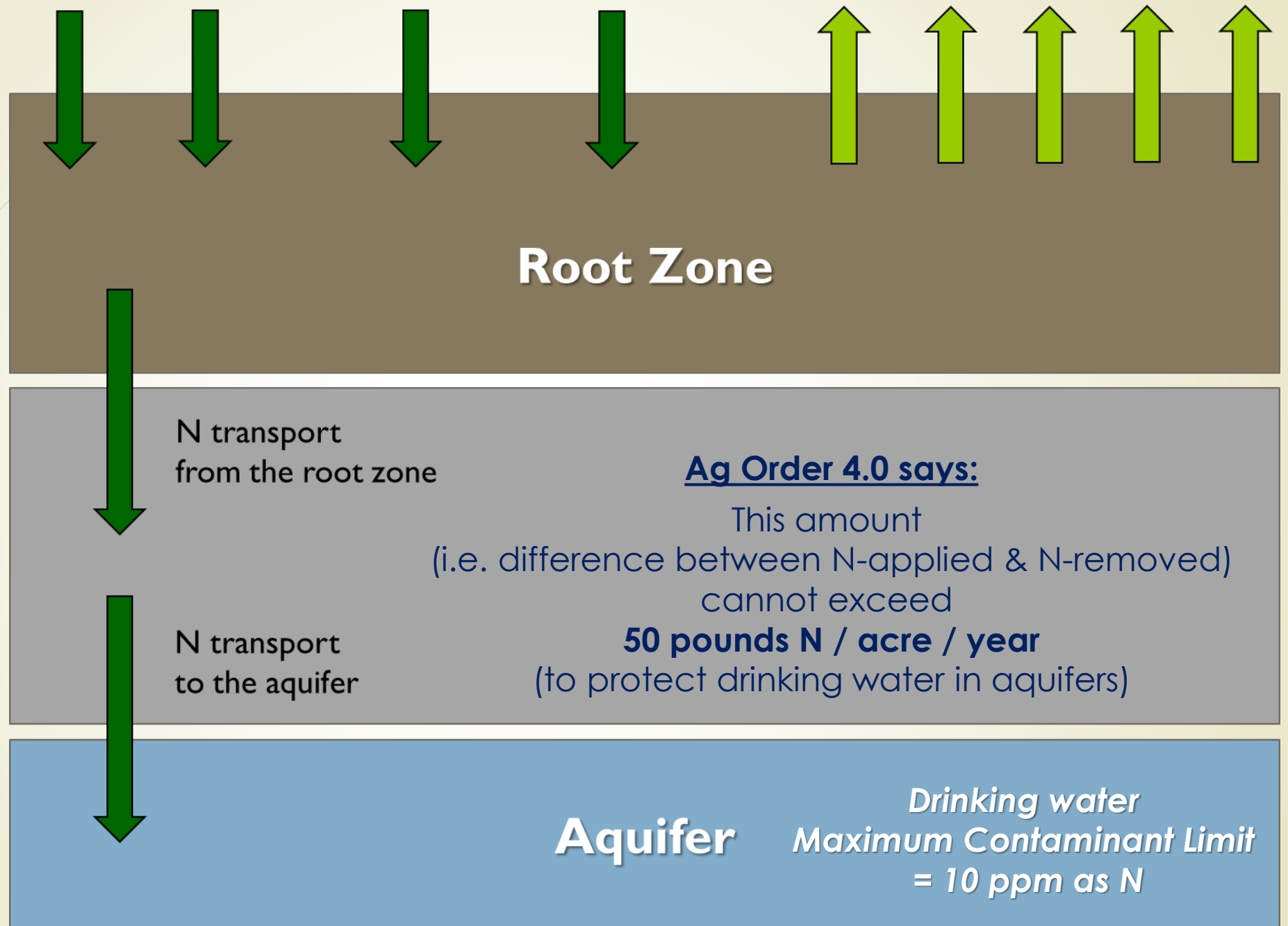
The “What” & “Why” of TNA/INMP Reporting

- ▶ TNA = Total Nitrogen Applied
- ▶ INMP = Irrigation & Nutrient Management Plan (summary report; generally, TNA info plus crop yields ... N removed at harvest)
- ▶ The difference between N-applied (A) and N-removed (R) is highly susceptible to leaching
- ▶ A statewide Expert Panel concluded: The most important management tool for this issue is to monitor, report, and manage the A/R or (A-R) balance



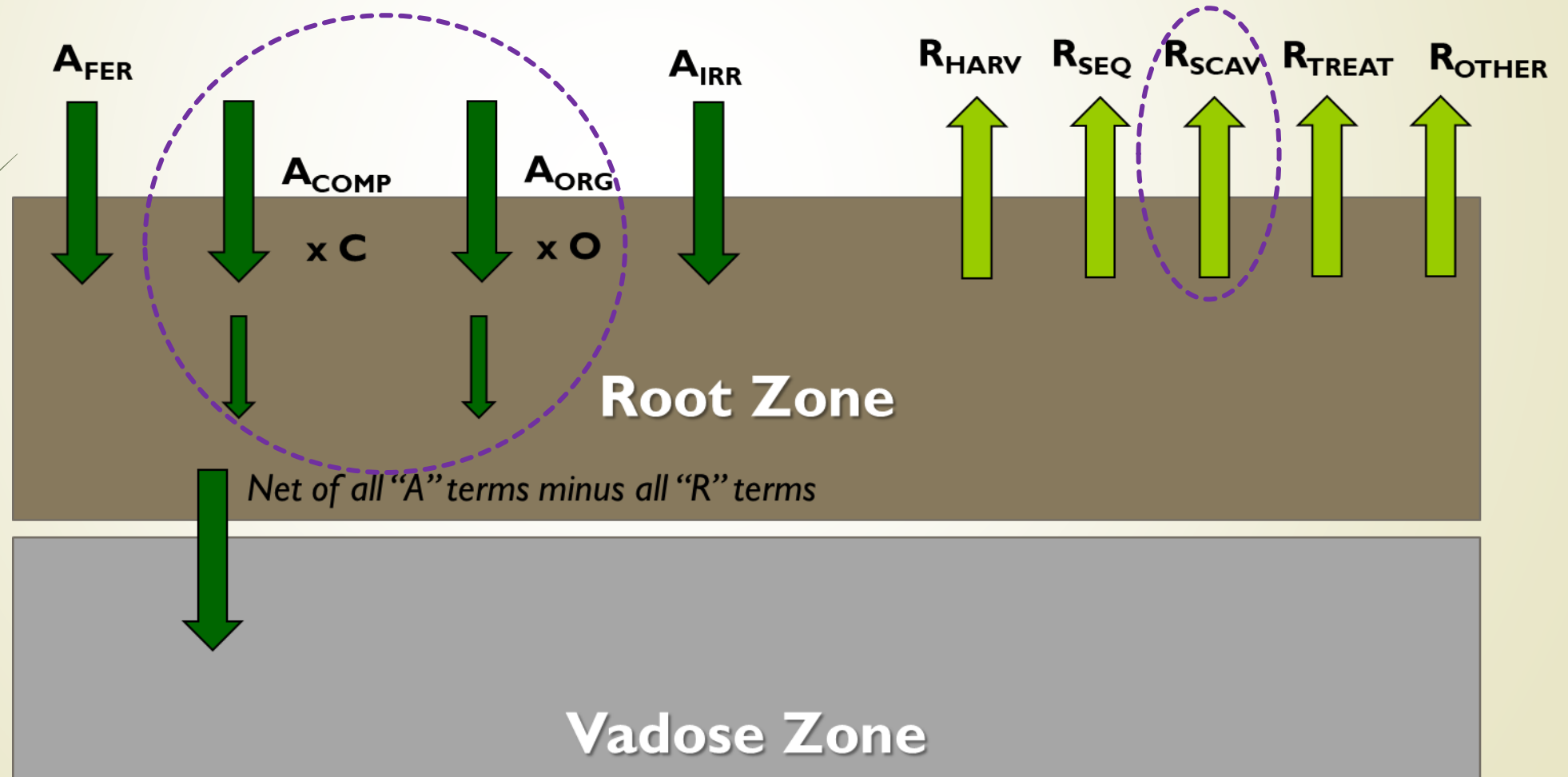


The
“A – R”
Concept



Ag Order 4.0 allows an adjustment factor for N applied in organic fertilizers (A_{ORG}) and composts (A_{COMP})

Ag Order 4.0 considers N removal in harvested plant material (R_{HARV}), non-legume cover crop uptake ($R_{SCAVENGE}$), and other pathways



TNA/INMP Reporting for SIP-Certified Wine Grape Ranches

- ▶ SIP-Certified/Preservation, Inc. collaboration passes certification data through to a TNA report
 - ▶ This process is also open to any certification program that collects the necessary ranch data
 - ▶ Applying for INMP exemption (in process)
- ▶ Entire ranch must be SIP-certified
 - ▶ Partially certified ranches must report TNA independently
- ▶ Entire ranch must be in grape production (for now?)

What and How to Report (1,2,3)

www.ccwqp.org/tna
www.ccwqp.org/inmp
This week, use .net

1. Gather records (see checklist on website)
 - Ranch info, crops, irrigation water, fertilizers & amendments, harvest/yield
2. Perform required calculations
 - List of calculations, instructions, & calculator tools on website
 - Or schedule a support session
 - Email support@ccwqp.org (English o espanol)
 - Call 831-761-8644 (English)
 - Llame a 831-240-9533 (espanol)
3. Fill out and submit form
 - Link to or download form from website (EZ Form or Spreadsheet Form)
 - Or schedule a support session (contact info above)

Report Forms

- ▶ Please use Preservation, Inc's forms to report; you do NOT need to also fill out a form on GeoTracker
- ▶ Spreadsheet Form (Excel workbook; www.ccwqp.org/tna or [/inmp](http://www.ccwqp.org/inmp))
 - ▶ Report many crops, ranches, or even Operations in single submittal
 - ▶ Auto-confirmation and feedback from "Checker" helps ensure correct reporting
 - ▶ Save your work mid-report; start next year's from this year's form
 - ▶ Auto-populate or cut-and-paste from calculator toolset
 - ▶ Get started by filling out an EZ-Form for 1-5 crops; receive pre-populated Spreadsheet Form
- ▶ EZ-Form (Google survey; no account required unless saving work)
 - ▶ Single ranch; 1-5 crops
 - ▶ Can take 5 minutes or less to complete w/ records ready

In Summary

- ▶ March 1st is an important date, every year!
 - ▶ TNA/INMP reports due
 - ▶ ACF updates due
 - ▶ Start of well monitoring period
- ▶ Third-Party invoices mailed 11/15 & due 12/15 annually
 - ▶ Non-appealable State Water Board fee applies if not paid
- ▶ Future Surface Water “Follow-Up” program
- ▶ “Follow-Up” for high TNA/INMP reports in development

Contact Info

ENGLISH

- Phone: 831-761-8644
- Support: Support@ccwqp.org
- Invoices: Office@ccwqp.org
- Web: www.ccwqp.org

ESPAÑOL

- Telefono: 831-240-9533
- Email: Support@ccwqp.org
- Web: www.ccwqp.org



← haz clic para español

TEMPORARY INFO (THIS WEEK ONLY)

- Email: ccagwaterquality@gmail.com
- Web: www.ccwqp.net
- Phone: 831-761-8644 o 831-240-9533

End