





Salinas Valley Water Project

2010 Irrigation and Nutrient Management Field Day - February 23, 2010

Manuel Quezada / Chris Moss

Monterey County Water Resources Agency



Presentation

- Salinas Valley Water Project
 - Nacimiento Dam Spillway Modification
 - Reoperation
 - Obermeyer Gate
 - Salinas River Diversion Facility
 - Obermeyer Gate (Inflatable Dam)
 - Pump Station & Pipeline
 - Filter Screen Station
 - Chlorination Facilities
 - Fish Ladder

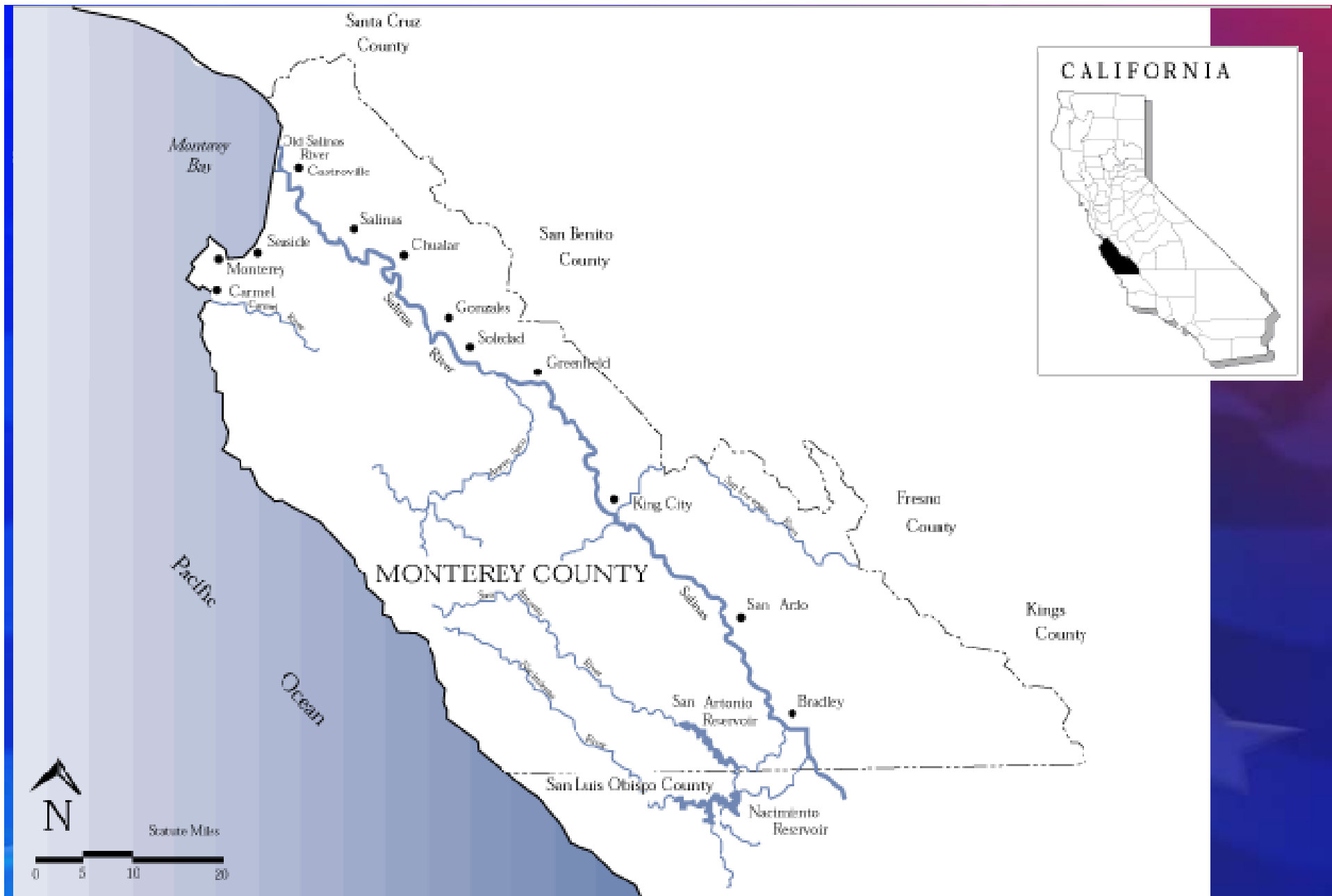


NACIMIENTO DAM SPILLWAY MODIFICATION PROJECT SUMMARY



Nacimiento Dam and Reservoir





Source: USGS, Jan., 1995.



Introduction

The Agency developed the Salinas Valley Water Project (SVWP) to address the water resources management issues within the Salinas Valley.

Two Objectives:

- Stop seawater intrusion resulting from basin overdraft, and;
- Provide an adequate water supply for current and future needs.



Background

SVWP contains three major components:

- Modifications to the Nacimiento Dam Spillway to safely convey PMF (~99,000 cfs) w/out overtopping or requiring Flood Pool;
- Construction of the Salinas River Diversion Facility, and;
- Re-operation of San Antonio and Nacimiento Dams.



Project Design Summary

- Original Spillway height is El 800 feet, NGVD 29
- Demolished existing Spillway 15 feet to El 785 feet
- Installed Obermeyer Gate - Gate height of 12.25 feet
- Existing Chute & Approach channel walls were raised, strengthened and anchored
- Bridge pier required strengthening
- High-Level Gate Operators modified
- Control house constructed



Spillway Chute





Spillway

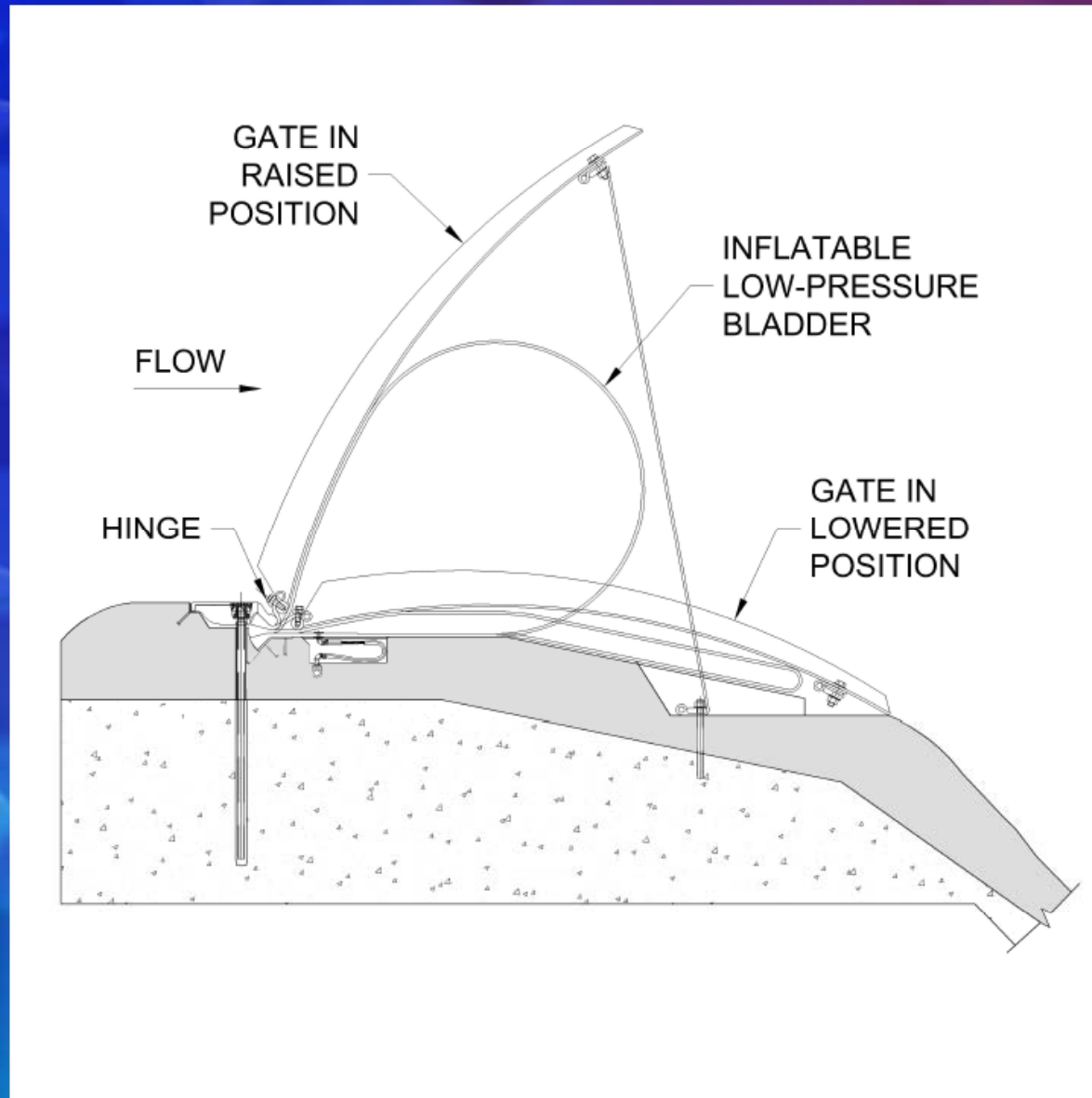




05/05/2008



"Obermeyer" Inflatable Gate





08/26/2008



09/03/2008 09:07



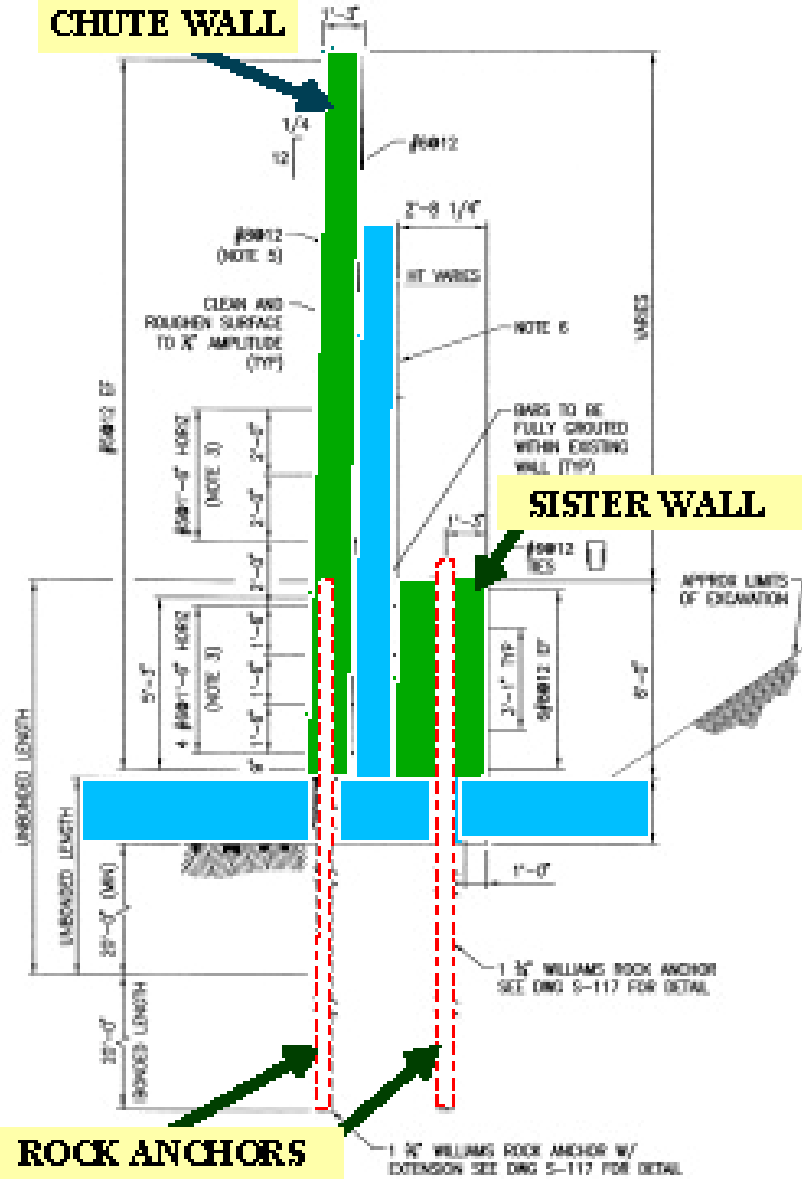
10/28/2008 11:31



11/12/2008 09:30



CHUTE WALL



SISTER WALL

ROCK ANCHORS

SECTION
 SCALE: 3/8" = 1'-0"
 STA 11+00 TO STA 12+50.6







07/18/2008 08:54



01/29/2009 12:00







Contract Update

All major construction activities were completed March 1, 2009, ahead of schedule and under budget. Currently, closing out contract, will seek project approval from BOD.

Granite Construction

Contract Amount	\$9,998,998
Final Construction Cost	\$10,040,287

Cost Savings

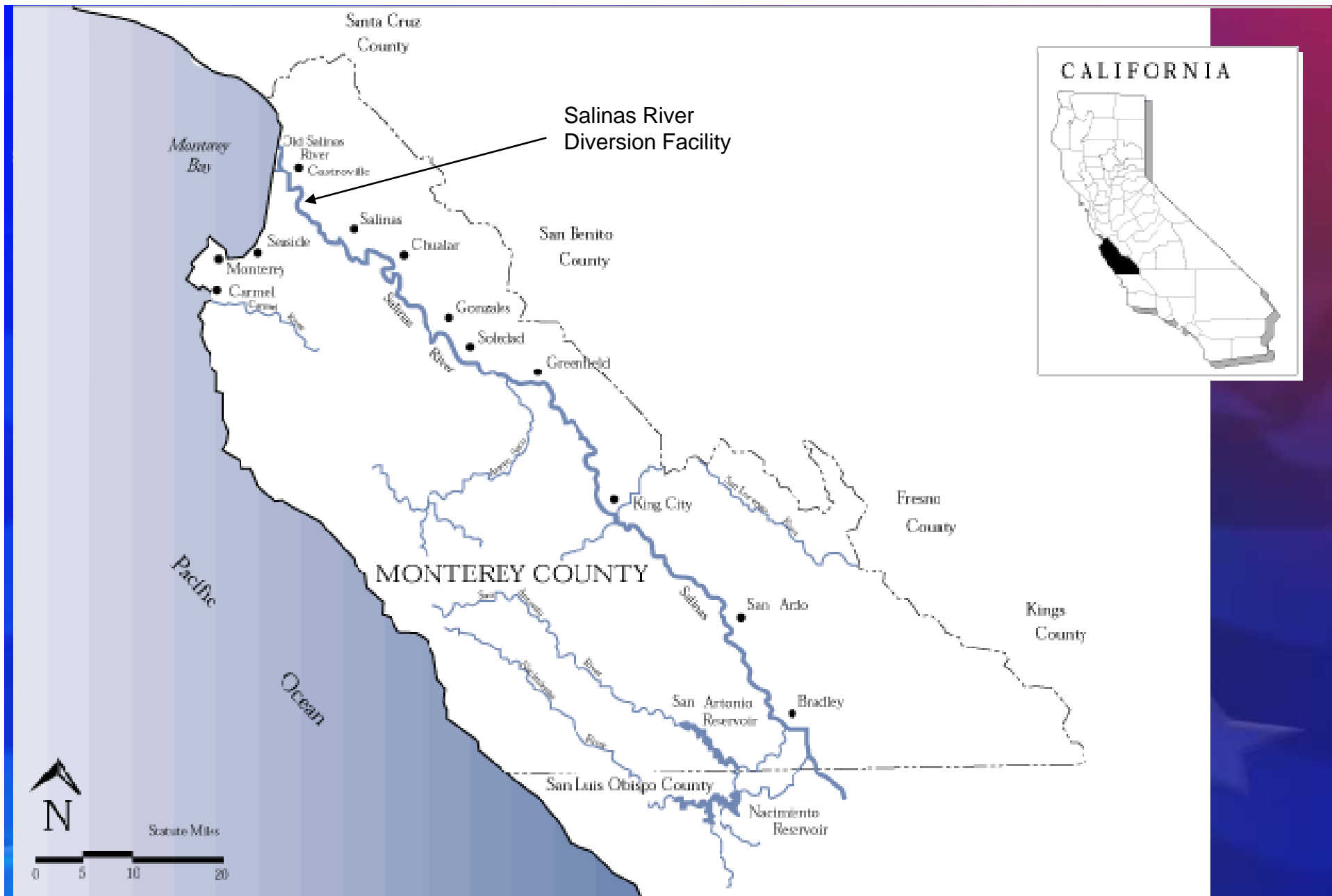
Agency receive credits from unused construction contingency, and from Obermeyer and Engineering contracts. Totals approximately \$1M



NACIMIENTO DAM SPILLWAY MODIFICATION PROJECT SUMMARY



SALINAS RIVER DIVERSION FACILITY PROJECT SUMMARY

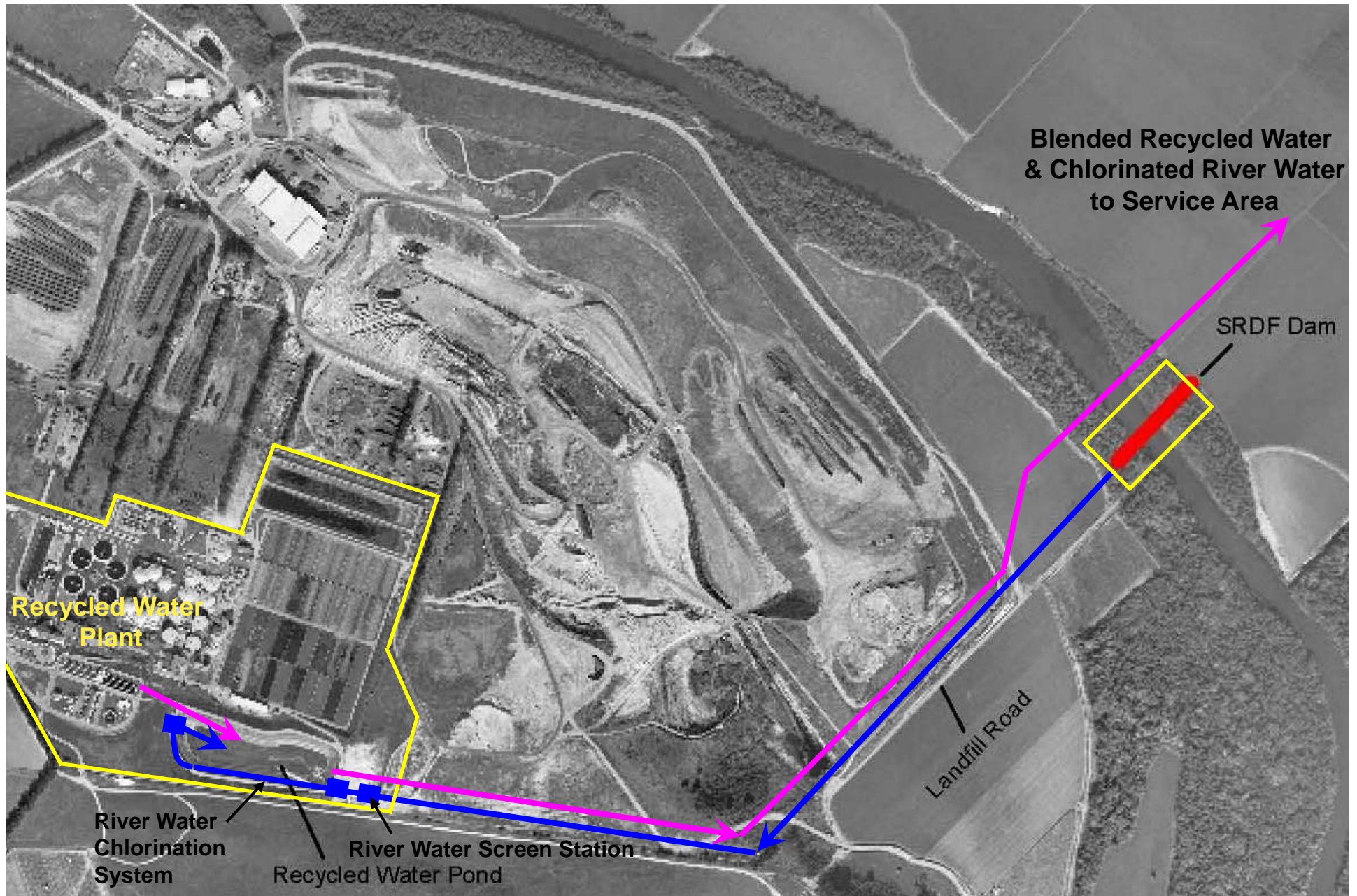


Source: USGS, Jan., 1995.



General Project Timeline

- Environmental Approvals 2001 – 2007
 - EIR/EIS, State, Fed, Local Permits
- SVWP Ballot Approval 2003
- SRDF Design 2004 – 2008
- Construction 2008 – 2009
- Operation 2010



General layout of Salinas River Diversion Facility



March 2008

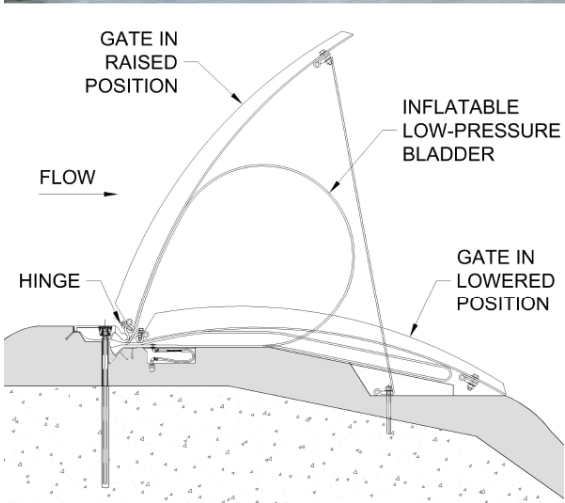


07 / 15 / 2008





12/04/2009



01/08/2010 11:26



River Water Filter Screen Station Prior to Chlorination

1/8/10





River Water Chlorination System

1/8/10



Recycled Water Pond

66-inch Diameter Chlorine Contact Pipeline

River
Water
Chlorine
Injection
Building



Contract Update

All major construction activities were completed January 15, 2010. Operation to begin April 2010.

Anderson Pacific Engineering Construction, Inc.

Contract Amount	\$11,036,100
Final Construction Cost (Estimated)	\$13,900,000

Cost Issues

Dam soil foundation



Salinas Valley Water Project

Manuel Quezada, Senior Water Resources Engineer
Chris Moss, Senior Water Resources Engineer

Monterey County Water Resources Agency

893 Blanco Circle, Salinas, CA 93901

831.755.4860

www.mcwra.co.monterey.ca.us