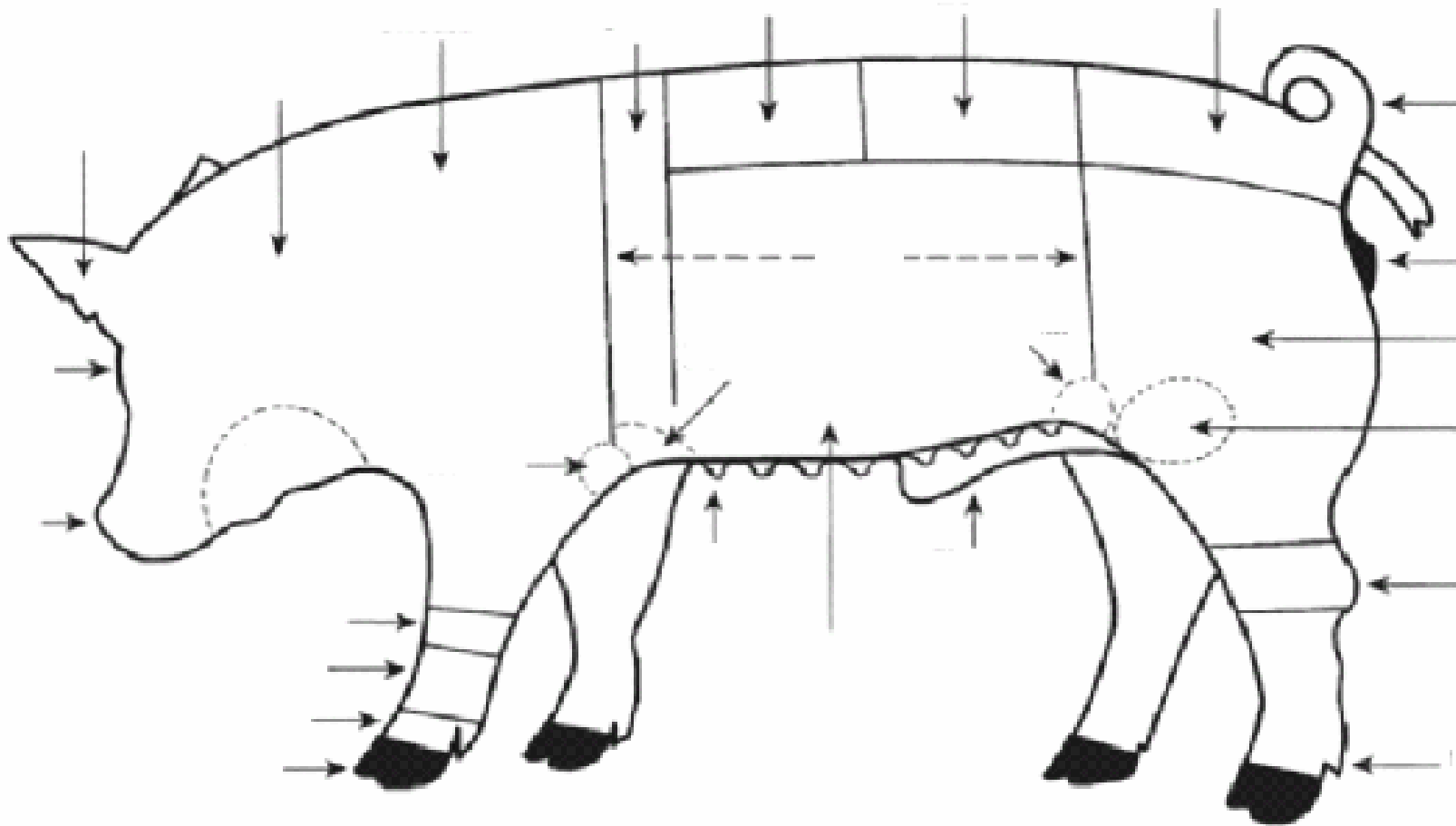


Parts of a Hog



 **SWINE**
LEARNING LABORATORY KIT

Quality Assurance and Animal Care: Youth Education Program
This material is based upon work supported by Extension Service,
United States Department of Agriculture, under special project number 93-EPSQ-4096.

Product distribution through the Ohio Agricultural Education Curriculum Materials Service.