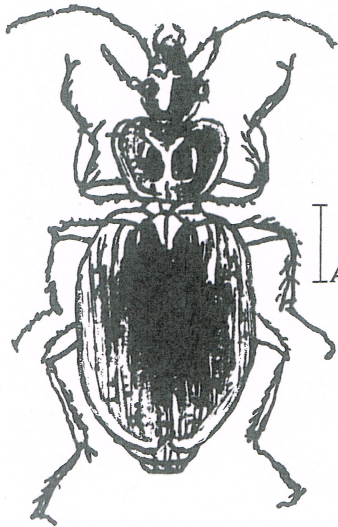
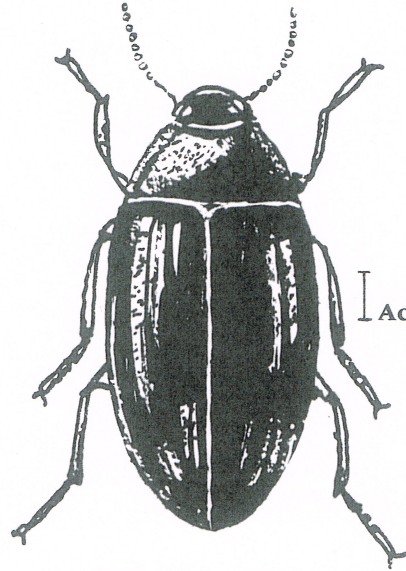

PREDACEOUS AND DARKLING GROUND BEETLES

*The authors are Andrew S. Deal, Program and Regional Director,
San Joaquin Valley Agricultural Research and Extension Center, Parlier,
and J. Hodge Black, Farm Advisor, Kern County*



Predaceous Ground Beetle



Darkling Ground Beetle

Among the insects that live outdoors but accidentally enter homes seeking places to hide are the predaceous and the darkling ground beetles. These ground beetles do no harm in the home, although some species emit a very offensive odor when disturbed.

Predaceous ground beetles are small to medium size, move rather rapidly, and feed on other insects. One of the most troublesome of the predaceous ground beetles is the tulle beetle. The tulle beetle is about 1/2 inch long and is pale brown in color with a large, dark blotch occupying much of the wing covers. It breeds in the marshlands along rivers or in moist, weedy areas and often appears in large numbers in the fall. It emits a disagreeable odor when disturbed.

Darkling ground beetles feed on living and decayed vegetable matter. They are small to medium size, hard-shelled, and black. They frequently breed in weedy or abandoned fields or in undeveloped areas covered with wild annual plants. When the plants dry up in the late spring, the beetles often move in large numbers to nearby homes.

WHAT TO DO

If only a few insects are involved, they can be killed with a fly swatter. Indoors, larger numbers of beetles can be killed with a contact household spray. Apply the spray along baseboards and doorsills and especially in dark corners where the beetles hide. *Do not spray an entire floor area or into the air.*

Division of Agricultural Sciences
UNIVERSITY OF CALIFORNIA

REVISED APRIL 1980

LEAFLET 2735

U.C. COOPERATIVE EXTENSION
1436 Polk Street
Napa, California 94558

Outdoors, use a garden insecticide containing diazinon or carbaryl (Sevin). Apply as a spray to the ground along the foundation of the house and beneath and around porches and doorsills. These materials may also be used to treat along the edges of abandoned fields or weedy areas from which the beetles may be coming.

If darkling ground beetles are damaging garden plants, they may be controlled by applying a 5

percent Sevin bait to the ground around the plants.

To prevent entry of beetles which may escape the insecticides, seal all openings and crevices in the outer walls of the house, particularly cracks around doors. Make sure that screens are tight. Eliminating breeding sites (such as accumulations of leaves, weeds and rubbish) around the foundation will prevent buildup of these unwelcome visitors.

WARNING ON THE USE OF CHEMICALS

Pesticides are poisonous. Always read and carefully follow all precautions and safety recommendations given on the container label. Store all chemicals in their original labeled containers in a locked cabinet or shed, away from food or feeds, and out of the reach of children, unauthorized persons, pets, and livestock.

Confine chemicals to the property being treated. Avoid drift onto neighboring properties, especially gardens containing fruits and/or vegetables ready to be picked.

Thinly spread all leftover spray material on the soil where it cannot contaminate crops or standing or underground water supplies. (Do not pour down sink or toilet.) Wrap empty containers in newspaper and put in the garbage can. **Never burn pesticide containers.**

PHYTOTOXICITY: Certain chemicals may cause plant injury if used at the wrong stage of plant development or when temperatures are too high. Injury may also result from excessive amounts or the wrong formulation or from mixing incompatible materials. Inert ingredients, such as wetters, spreaders, emulsifiers, diluents, and solvents, can cause plant injury. Since formulations are often changed by manufacturers, it is possible that plant injury may occur, even though no injury was noted in previous seasons.

To simplify information, trade names of products have been used. No endorsement of named products is intended, nor is criticism implied of similar products which are not mentioned.