

Full Disclosure

- I am NOT a honey bee expert.
- I know NOTHING about raising honey bees.
- I got into this because non-native honey bees are by far the most frequent visitors to native plants in SD County. I study POLLINATION.
- I HAVE performed the only systematic study on the range and frequency of Africanized honey bees (AHB) California.

Spread of the Africanized Honey Bee

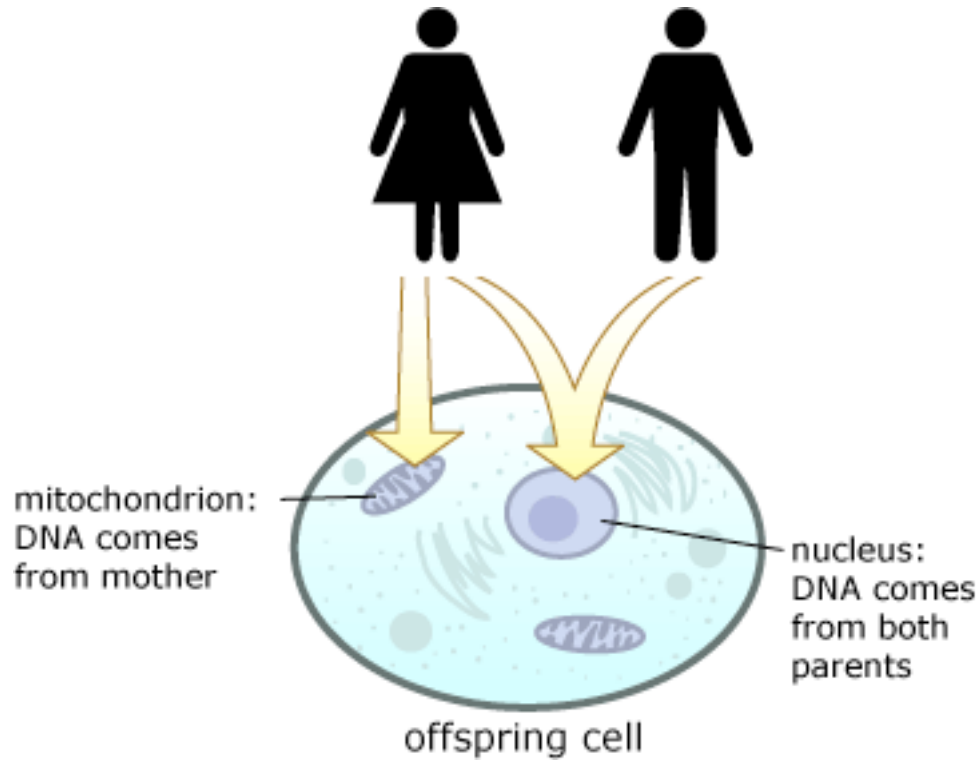
Definition: AHB are hybrids between two honey bee subspecies, *Apis mellifera mellifera* from Europe and *Apis mellifera scutellata* from southern Africa.



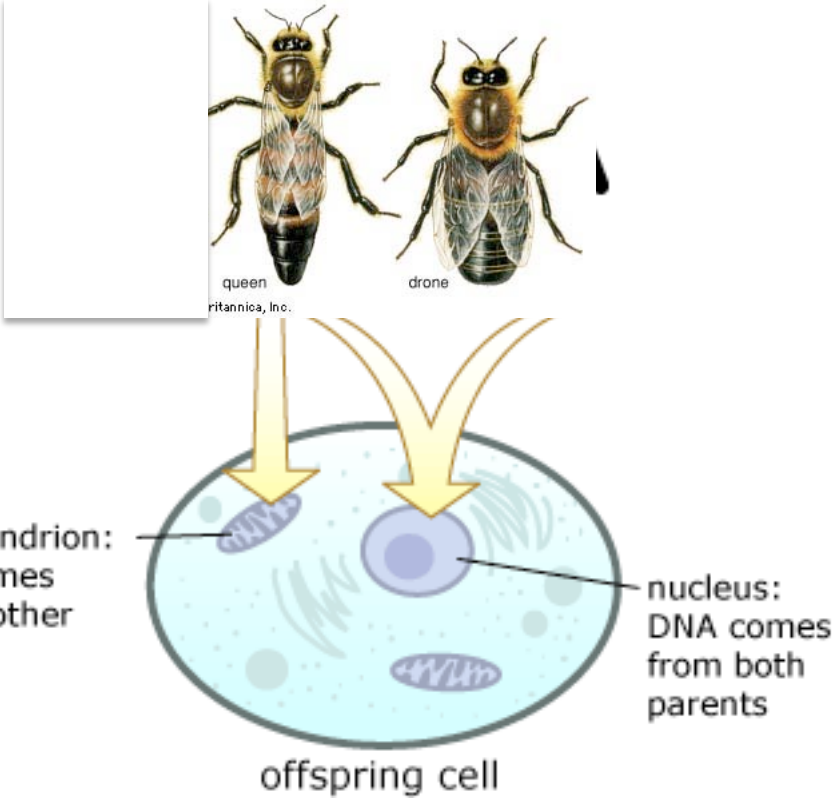
How is the Africanized honey bee invasion tracked?

- Morphology. Africanized and European honey bees are very similar. Africanized honey bees usually slightly smaller.
- Mitochondrial DNA. Simple, inexpensive, genetic test to determine maternal lineage.
- Nuclear DNA. Provides information on maternal AND paternal ancestry, but more expensive to assay.

Mitochondrial DNA is a maternally-inherited circular chromosome



Same for honey bees



Genetics of AHB invasion of Texas. First 10 years.

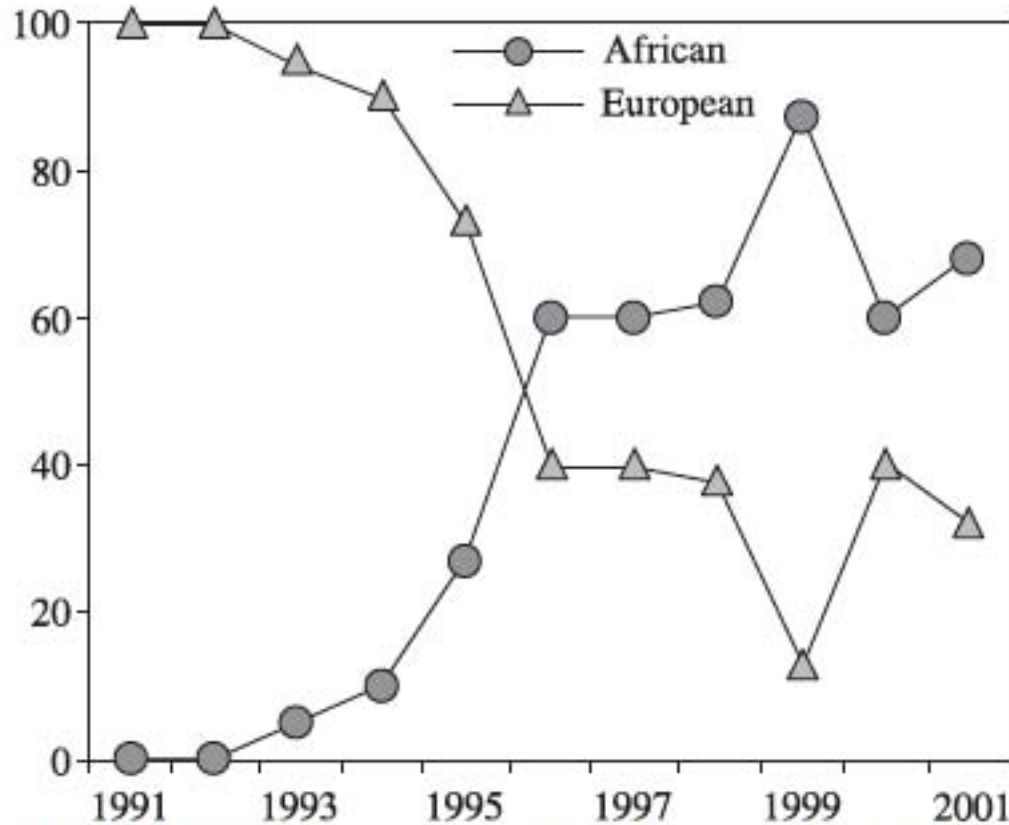


FIGURE 3. Mitotype frequencies (%) in a honeybee population of the Welder Wildlife Refuge (Texas) before and after the invasion of African honeybees in 1993 (from Pinto *et al.*, 2004).

- 65% African mitotypes 10 years after invasion.
- European mitochondria persist in population
- Initially, bees carrying African mitotypes had more African nuclear genes.
- After 10 years, mitochondrial type did not predict African content of nuclear genome.

Ten year increase in African mitochondrial (black) and nuclear (grey) genetic content

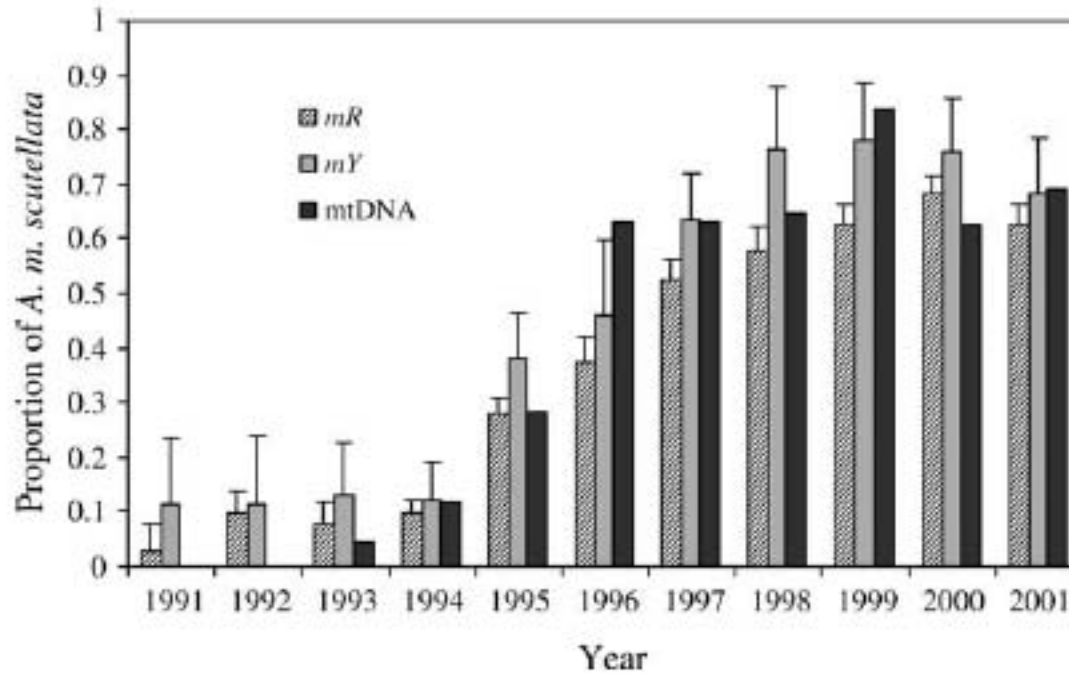


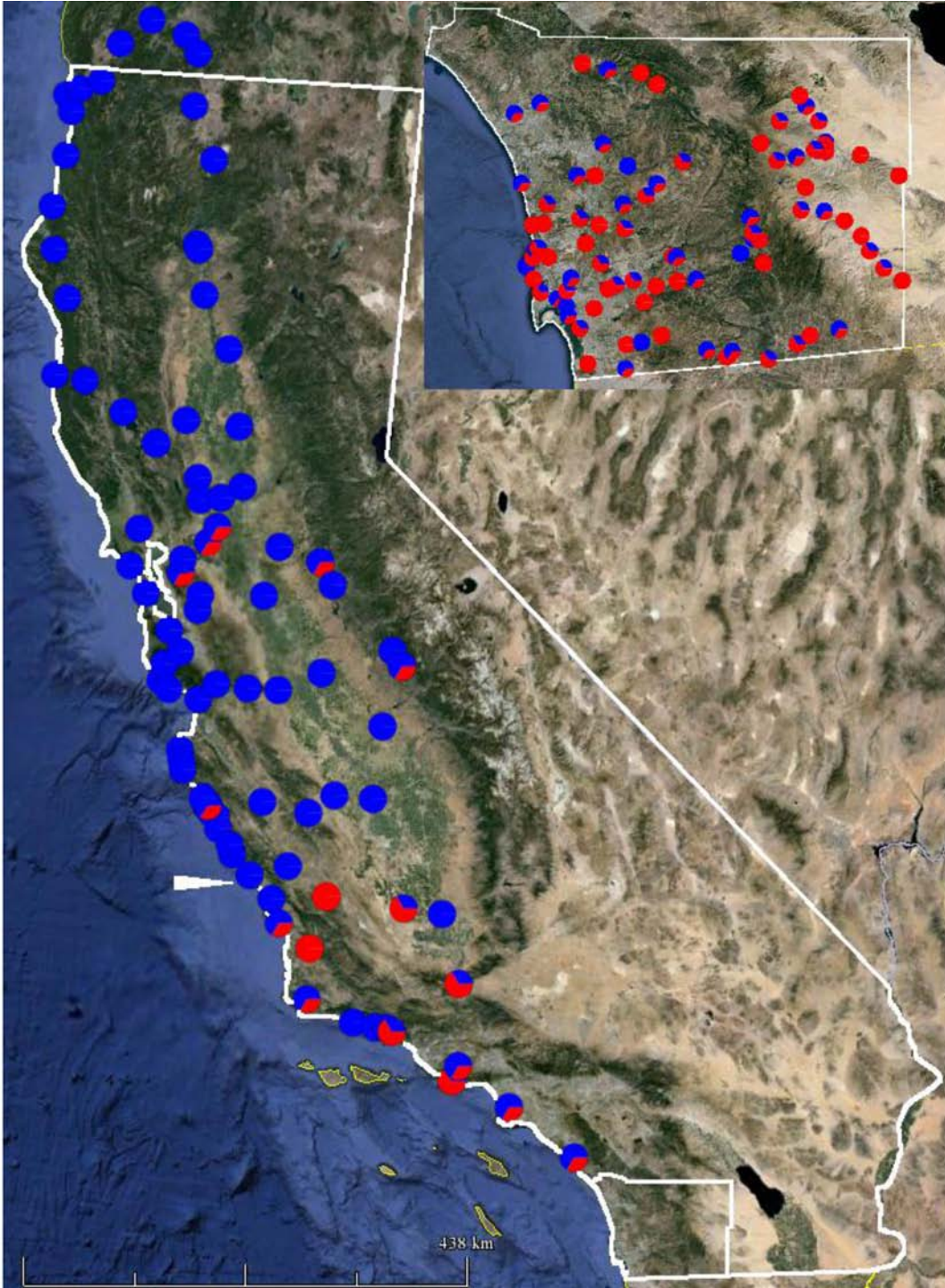
FIGURE 4.—Proportions of the *A. m. scutellata* mitotype and nuclear alleles in the WWR population over time. Nuclear admixture bootstrap average and standard deviation were computed for 1000 iterations using the gene-frequency-based estimator m_R and the gene-frequency and molecular-based estimator m_Y .

Pinto et al. Genetics 2005

Distribution of Africanized Honey Bees in California

Affected counties include:
San Diego, Imperial, Riverside, Orange, San Bernardino, Los Angeles, Ventura, Santa Barbara, Kern, San Luis Obispo, Kings, Tulare, Inyo, Madera and Mariposa.





Invasion of the Africanized honey bee

Method: Three worker bees per site.

Red – African mitochondria

Blue – European mitochondria

Conclusions

- Africanized honey bees extend north to 40km south of Sacramento
- 65% of honey bees in SD have African mitochondria
- Most honey bees in SD County are Africanized and feral.

Why you should care about AHB

- They can be more aggressive than EHB.
- They can attack even when only indirectly threatened such as when a neighbor is using a power tool or mower, etc.
- You probably have neighbors.
- This is a litigious society.
- You don't want to be responsible for the death of a neighbor, their child, or their pet.

Recent headlines

WORKER DEATH: Bees can be easily provoked
(Riverside County, Aug. 2015)

**Puppy In La Habra Heights Lucky To Be Alive
After Being Stung 155 Times By Africanized
Bees**
LA County, May, 2016

**Hiker dies in bee attack at Userly Mountain
Park in Arizona**
Phoenix, May, 2016

House hunter hospitalized after bee attack
Phoenix, May, 2016

[Killer *bees* probably are in the Bay Area to stay](#)
San Francisco Chronicle-May 16, 2016

[Insects in Concord attack were regular honeybees, not killer *bees*](#)
SFGate-May 24, 2016

What to do if attacked by Africanized honey bees (from USDA)

- Run away and keep running. Do NOT stop and drop.
- If you can, get inside a building or car. A few bees may follow, but far more will remain outside.
- Do not jump in a swimming pool.
- When safe, scrape off stingers with credit card, thumbnail or knife blade, do not use tweezers.
- Seek medical help if allergic or if stung more than 15 times (non-allergic adult can survive 1000 stings).

How can my hive become Africanized?

- Queen gets old and dies, workers raise new queen who mates with Africanized drones.
- Hive is taken over by AHB directly (usurpation).

How can I prevent Africanization?

- Follow the rules.
- Re-queen yearly, preferably from a dealer who lives outside the range of the AHB. That queen arrives already inseminated.

Is there a good side of the AHB?

- AHB invasion increases the genetic diversity of honey bees.
- AHB have replaced EHB from Brazil to the US, clearly they have ecological advantages.
 - Increased rates of colony growth and swarm production
 - Increased honey production?
 - Increased disease resistance
 - Increased aggression
- If positive traits can be bred into EHB without aggression, a better bee might result.

AHB



Home Protection by
Africanized Honey Bees