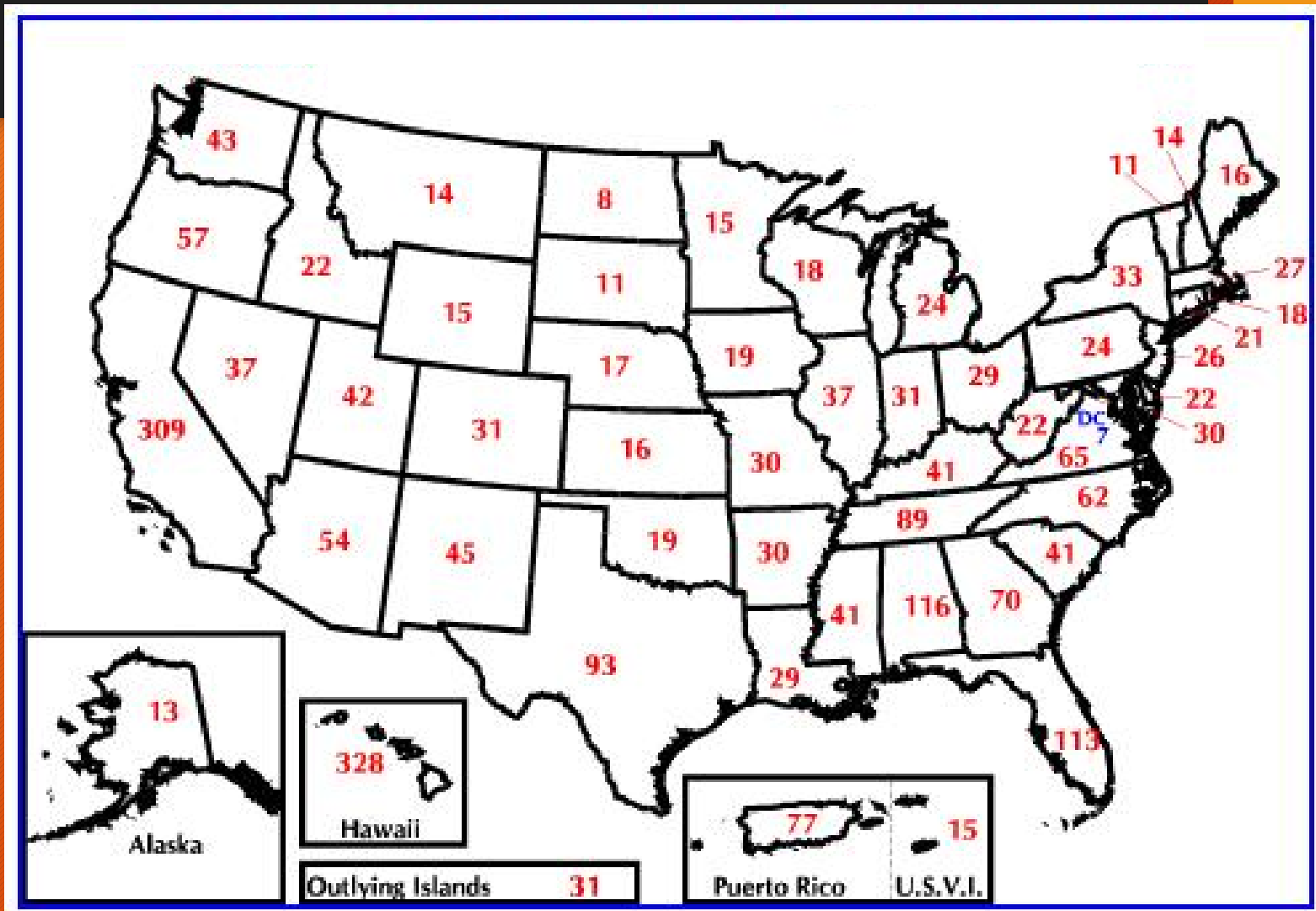


# Endangered Species and Pesticides



Leopoldo Moreno  
Sr. Environmental Scientist  
Department of Pesticide Regulation  
(916)324-3888  
[polo.moreno@cdpr.ca.gov](mailto:polo.moreno@cdpr.ca.gov)

# Endangered Species in the U.S.





# Endangered Species in Mariposa County

California wolverine



Succulent owl's clover



Sierra Nevada yellow-legged frog



California tiger salamander







Great gray owl



Yosemite toad



Mariposa pussypaws

Dean Wm T. ...



Sierra Nevada red fox



Mariposa lupine





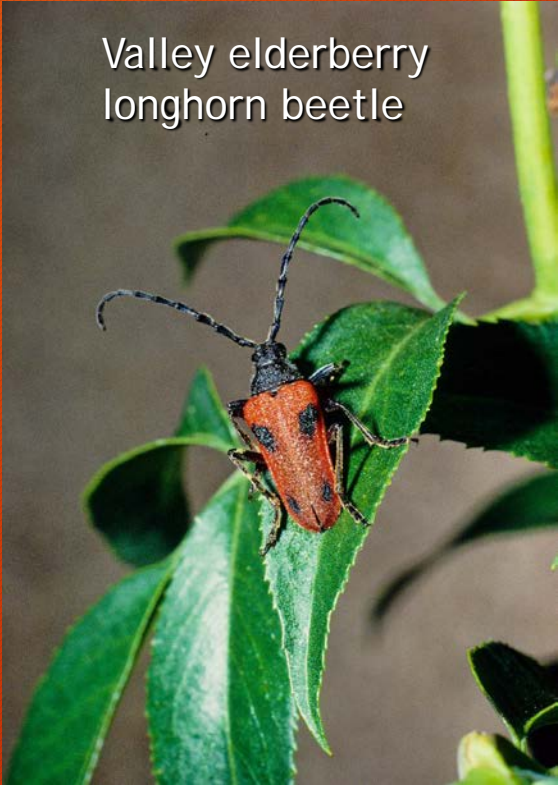
willow flycatcher



steelhead



limestone salamander



Valley elderberry  
longhorn beetle



Merced clarkia



# DPR's Endangered Species Program

Our focus is to address any pesticide/endangered species issues resulting from the use of Rodenticides, insecticides, herbicides, and fungicides.

Implemented under ESA Section 7(a)(1) - Local Plans: develop Pesticide Use Limitations to prevent effects on endangered species or their habitat.

Comprehensive: State and Federally-listed species.  
Voluntary compliance



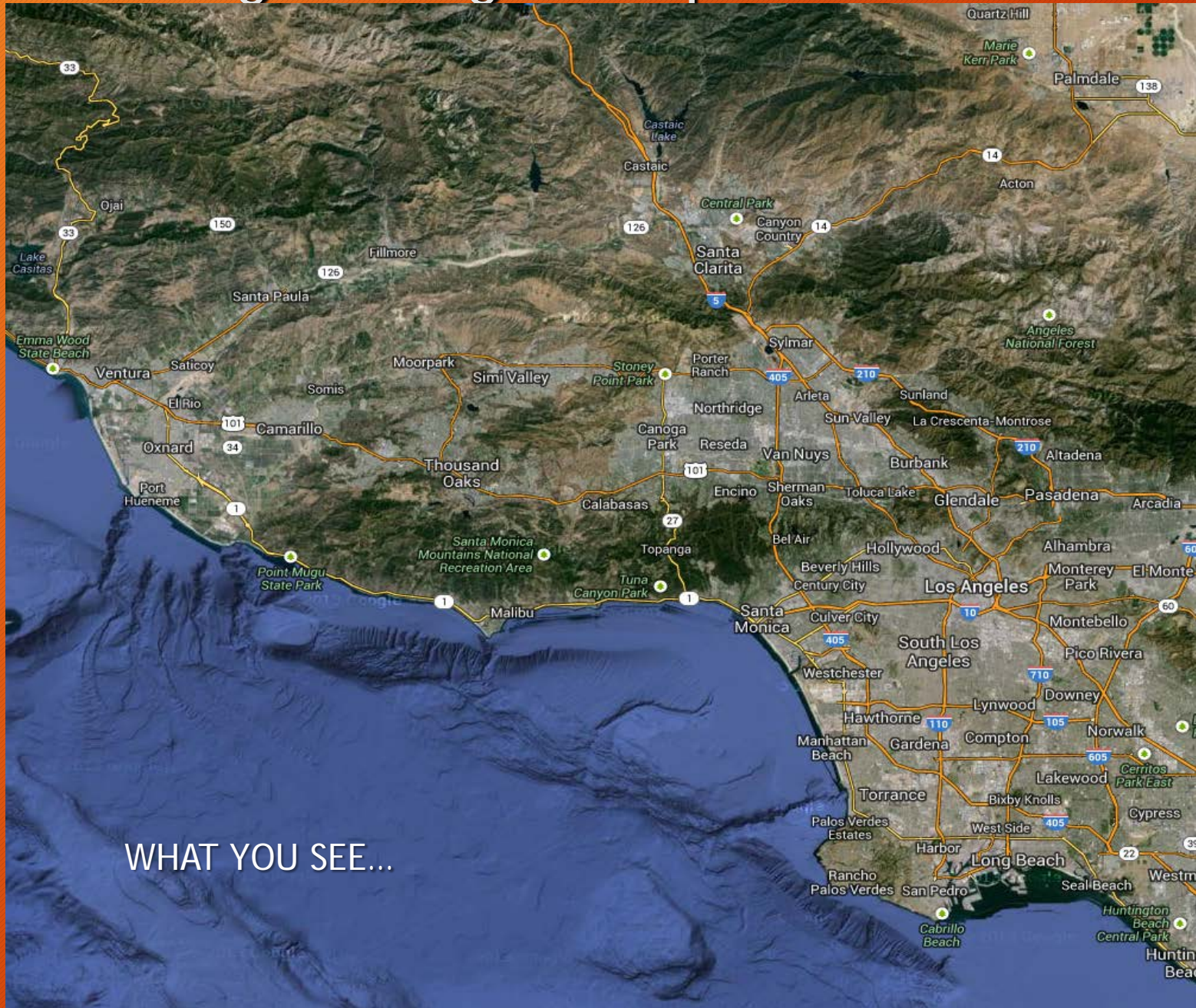


# DPR's Endangered Species Program

- Activities:
  - a) Location of endangered species' habitats for use in PRESCRIBE
  - b) Maintain PRESCRIBE, internet data base for public queries.
  - c) Public Education and training thru continuing education courses.
  - d) Publish educational materials for pesticide applicators. Materials are made available online or distributed thru County Agricultural Commissioners, PAPA, CAPCA, etc.

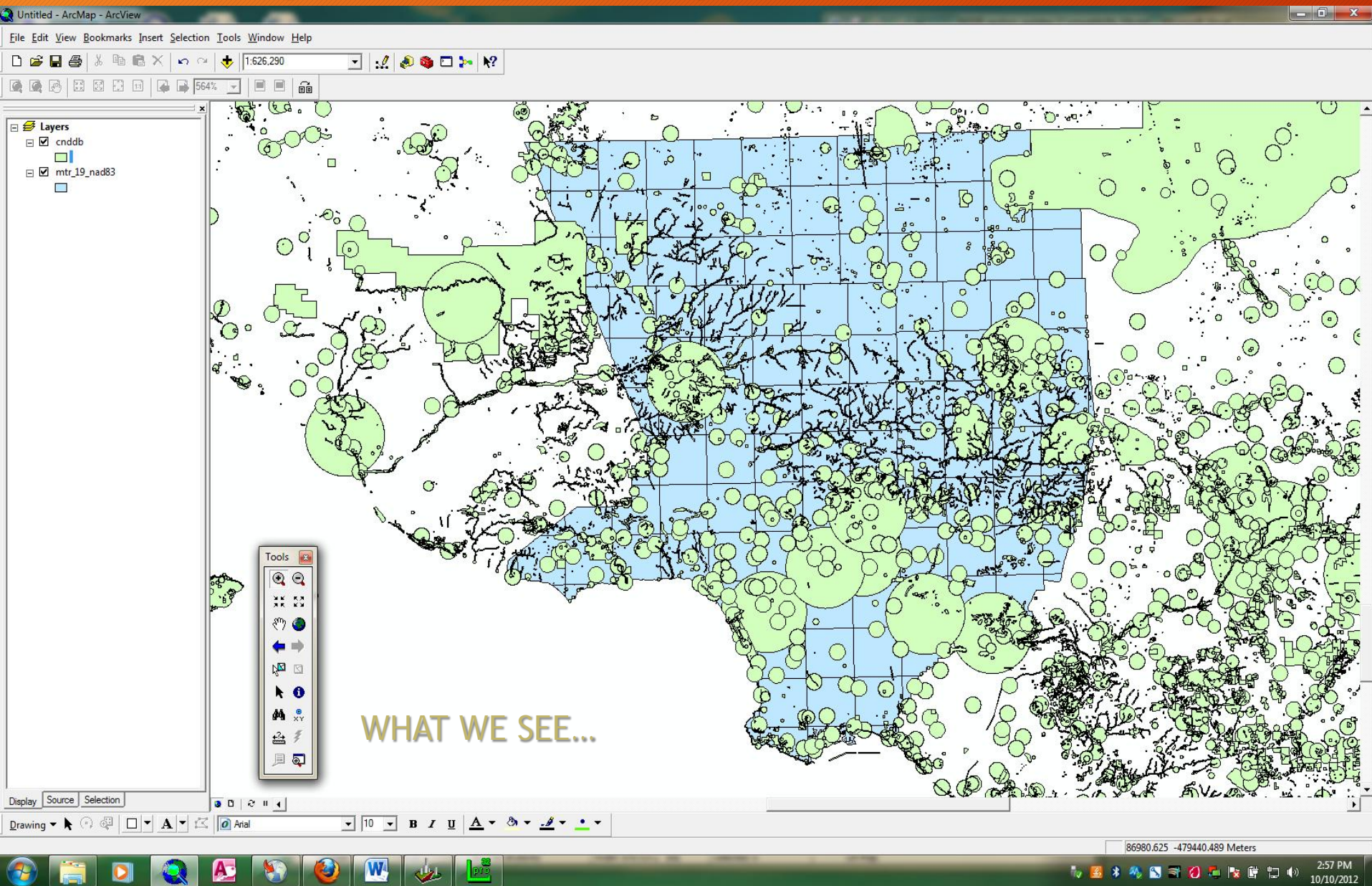


# Locating Endangered Species' Habitat



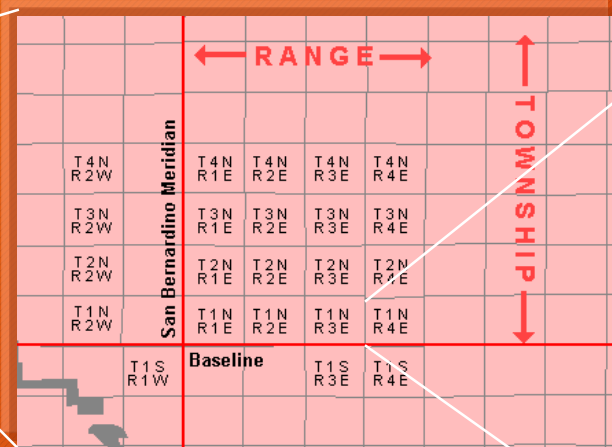
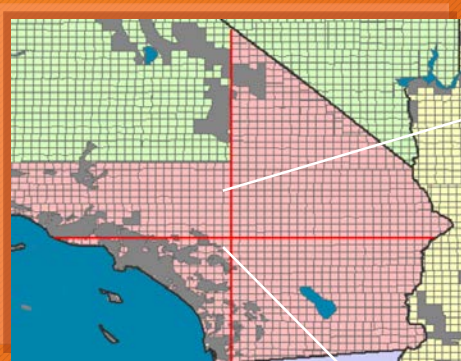


# Locating Endangered Species' Habitats





We use Public Land Use Survey System coordinates - Township/Range/Section (TRS) to locate habitats.



Range (East-West axis)

A 6x6 grid representing a township section. The grid is labeled with numbers 1 through 36. The top row is labeled 6, 5, 4, 3, 2, 1. The second row is labeled 7, 8, 9, 10, 11, 12. The third row is labeled 18, 17, 16, 15, 14, 13. The fourth row is labeled 19, 20, 21, 22, 23, 24. The fifth row is labeled 30, 29, 28, 27, 26, 25. The bottom row is labeled 31, 32, 33, 34, 35, 36. A vertical double-headed arrow on the left is labeled '6 miles'. A horizontal double-headed arrow at the bottom is labeled '6 miles'. An arrow points from the number 14 in the third row, fifth column to the text 'Section' below the table.

Township (North-South axis)

Section

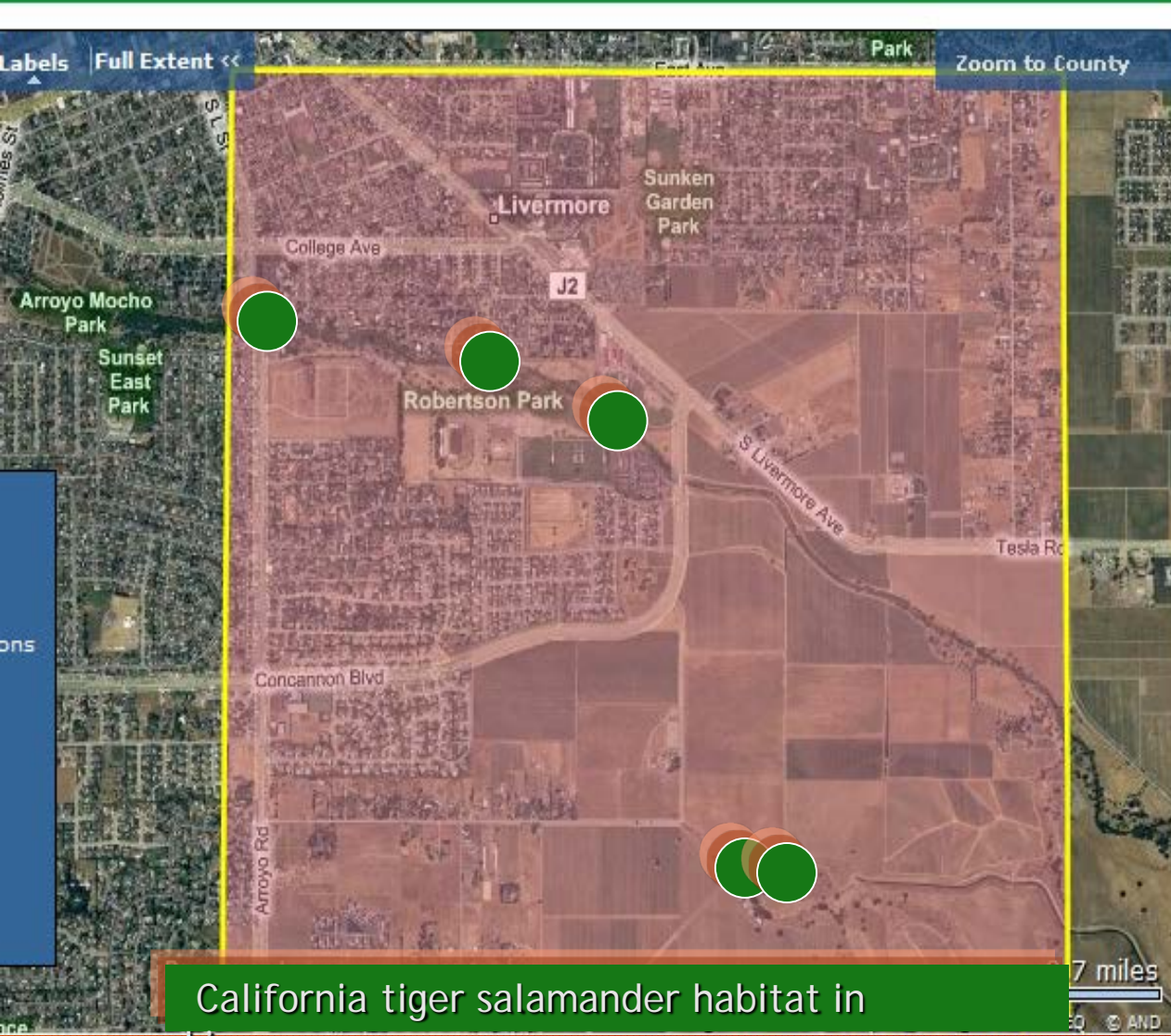
In California there are over 4,000 Townships, each one containing 36 sections (square miles). Each section has a

unique T/R/S coordinate code. These coordinates allow us to locate the species' habitats with a square mile precision. The same coordinate system is used for Pesticide Use Reports.

example: T1NR4ES14



Habitat: what an organism needs for all its life functions: born, grow, eat, reproduce and die.



California tiger salamander habitat in





# Pesticides and Endangered Species

- Many endangered species and their habitats are deceptively plain.
- Some endangered insect species are dependent on host plants for their life cycle. Herbicide impacts to host plant impact the insects.
- Furthermore, indiscriminate use of insecticides can impact those endangered insect species.





# Example: Valley elderberry longhorn beetle and its host plant - elderberry tree



- The valley elderberry longhorn beetle depends on the elderberry tree in every phase of its life cycle.
- As elderberry trees begin flowering in spring, these beetles begin to emerge from their tunnels bored through the tree's pith; roaming the trees until late June, eating foliage and possibly flowers; until they mate.



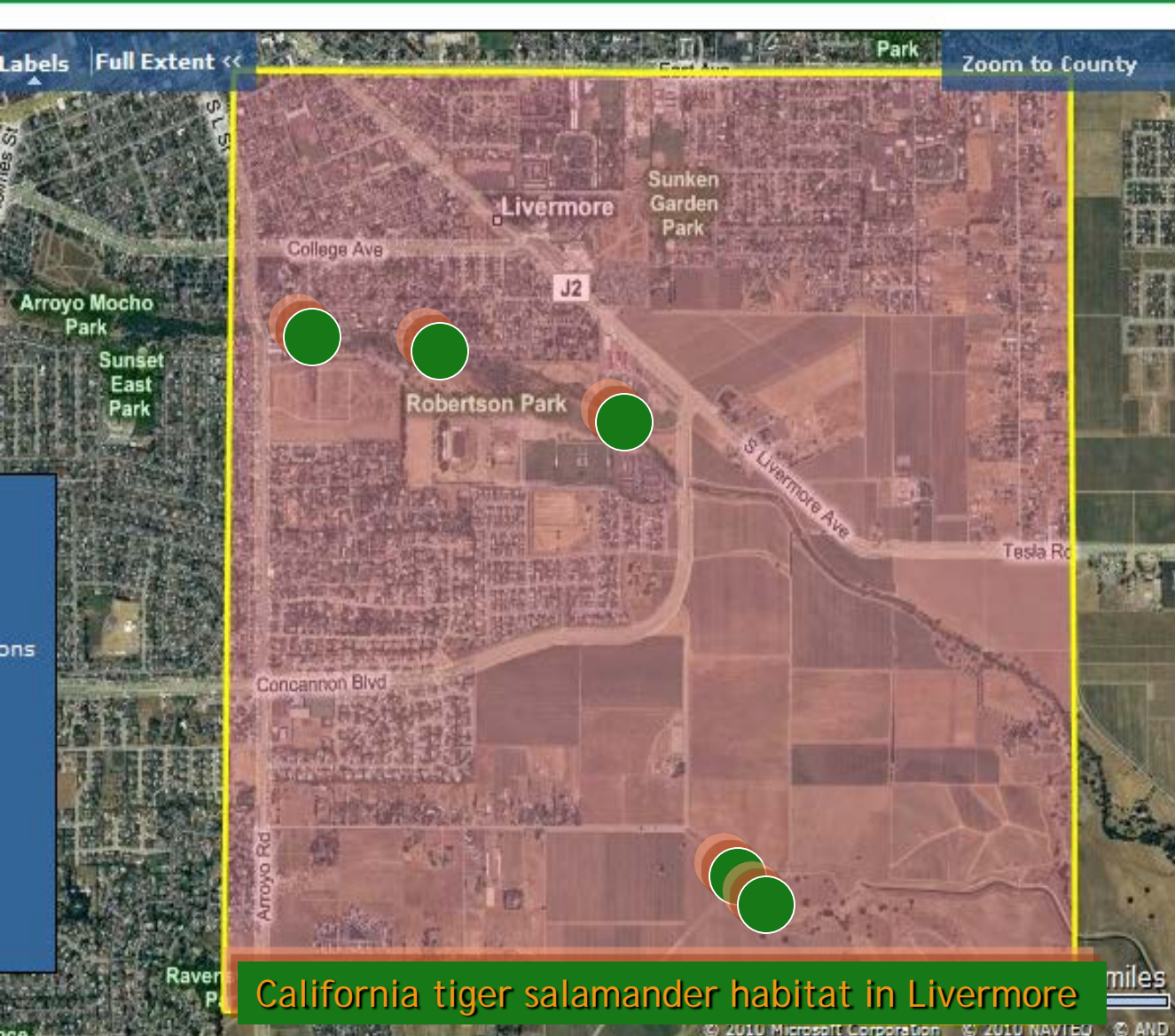
# Herbicides and Endangered Species

- In some instances, endangered plants can be found along public roads and rights of way, where roadside maintenance would likely affect them.
- Some herbicides have aquatic toxicity and may affect endangered species living in aquatic habitats such as rivers, creeks, vernal pools, etc.





# Rodenticides/Endangered Species Issues

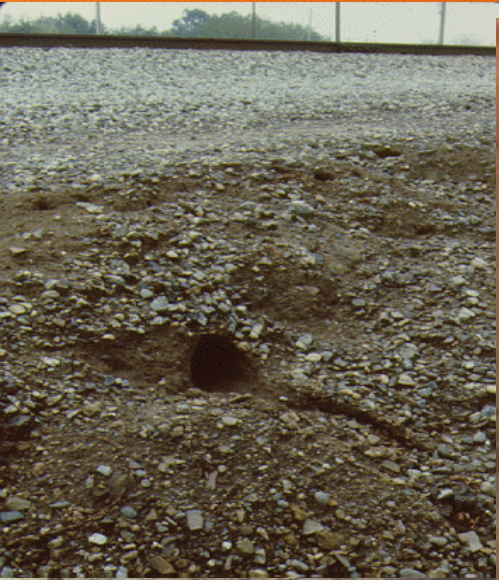


California tiger salamander habitat in Livermore

Some endangered species' habitats have been surrounded by Urban or Agricultural development.



# Rodenticides/Endangered Species Issues



Many endangered species find shelter in burrows made by vertebrate pests and vice versa. They might also use man-made structures such as drains, levees, refuse piles, etc., for shelter.



# Burrow-dwelling species such as...



San Joaquin kit fox



California tiger salamander



Desert tortoise



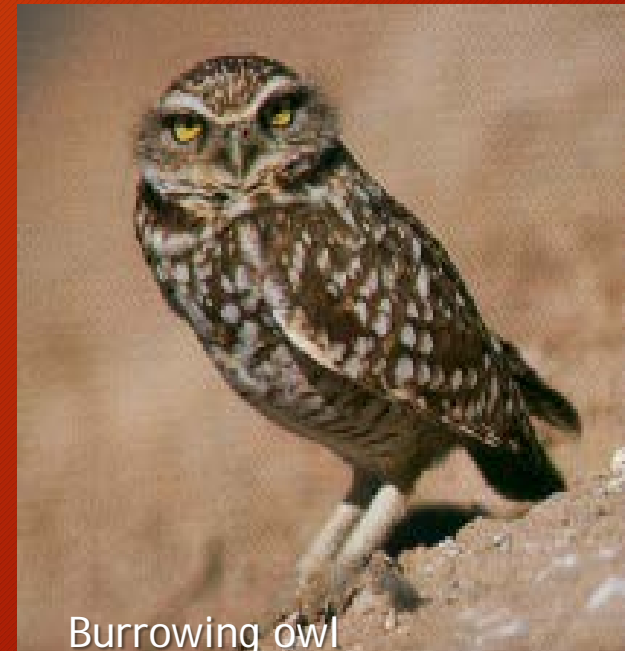
Sierra Nevada yellow-legged frog



Giant garter snake



Blunt-nosed leopard lizard



Burrowing owl



# Protecting Endangered Species







# DPR's Pesticide Classification Process for Protection of Endangered Species

## HERBICIDES



## Active Ingredients Tables

Active ingredients of pesticides covered by this bulletin are listed in separate tables on the following pages by classification as herbicides, insecticides, fungicides or rodenticides. The active ingredients table for each pesticide class specifies the activity category of each active ingredient and one or more hazard classes that are subsequently used to determine appropriate pesticide use limitations.

Herbicides

### Herbicide Exposure Categories

Herbicides are grouped by activity categories (a-e) that broadly define mode of action and use patterns that in turn determine potential routes of exposure to listed species. The activity category of an herbicide is the exposure component that is used with the hazard class of the pesticide and the taxonomic group of the species to define which pesticide use limitations (if any) to apply.

Activity Category	Description
<b>a</b>	Broad spectrum foliar active herbicides with systemic or contact activity and without pre-emergent or residual soil activity.
<b>b</b>	Herbicides with foliar activity on broadleaved plants (dicots) only.
<b>c</b>	Herbicides with foliar activity on grasses (monocots) only.
<b>d</b>	Broad spectrum herbicides with residual soil activity.
<b>e</b>	Broad spectrum, seedling stage, pre-emergent herbicides.

## Activity Category

- Products are grouped by activity categories that broadly define their mode of action and use patterns that in turn determine potential routes of exposure to listed species.



## Active Ingredients (Herbicides)

Active Ingredients	Hazard Class		
	Aquatic Animals (AQ)	Plants	
		Dicot (PD)	Monocot* (PM)
2,4-D		X	
2,4-D, butoxyethanol ester	X	X	
2,4-D, dimethylamine salt		X	
2-(2,4-DP), dimethylamine salt		X	
4(2,4-DB), dimethylamine salt		X	
alachlor		X	X
atrazine		X	X
benefin	X	X	X
bensulfuron methyl		X	X
bensulide		X	X
bentazon, sodium salt		X	X
bromacil		X	X
bromoxynil	X	X	X
butylate		X	X
cacodylic acid		X	X
carfentrazone-ethyl		X	X
chlorsulfuron		X	
chlorthal-dimethyl		X	X
clethodim			X
clopyralid		X	
copper	X		
copper ethanolamine complex	X		

\* and gymnosperms

Herbicides

## Active Ingredients' Hazard Class

- Each AI is classified by potential hazard class to Aquatic Animals and/or Plants (Dicots or Monocots).



## Species Descriptions

### CALIFORNIA RED-LEGGED FROG



Photo: John Brede, CDFG

Scientific Name: *RANA AURORA DRAYTONII*

Federal Status: Threatened

#### Species Description:

Up to 5 in. long, undersides of adults largely red; backs have black flecks and blotches, on a brown, gray, olive, or reddish background color; tadpoles range from 0.6 to 3.1 long, are dark brown and yellow with darker spots.

#### Habitat Description:

REQUIRES 11-20 WEEKS OF PERMANENT WATER FOR LARVAL DEVELOPMENT. MUST HAVE ACCESS TO ESTIVATION HABITAT. LOWLANDS & FOOTHILLS IN OR NEAR PERMANENT SOURCES OF DEEP WATER WITH DENSE, SHRUBBY OR EMERGENT RIPARIAN VEGETATION.

Hazard Class:

AQ, FS

### CHINOOK SALMON (SRWR-ESU)



Photo: NMFS

Scientific Name: *ONCORHYNCHUS TSHAWYTSCHA*

Federal Status: Threatened

#### Species Description:

Chinook are largest of the salmon, adults often exceed 40 pounds. They use a variety of freshwater habitats, but it is more common to see them spawn in larger mainstem rivers than other salmon species.

#### Habitat Description:

OCCURS IN THE SACRAMENTO RIVER BELOW IMPASSABLE BARRIERS. ENTERS THE RIVER NOVEMBER TO JUNE AND SPAWNS FROM LATE APRIL TO MID-AUGUST.

Hazard Class:

AQ

## Hazard Class

- This relates to the Active Ingredients table, and shows which types of hazards may impact a given species.



## Use Limitation Codes (Herbicides)

The following table identifies use limitation codes for each combination of hazard class (AQ, PM or PD) and herbicide activity category (a-e). Use the hazard class row(s) that corresponds with both (1) the pesticide (from the Active Ingredients table) and (2) the hazard class (taxonomic group) of the species in the section to be treated (as found in the Species Descriptions table) and the activity category column(s) that corresponds with the herbicide(s) you intend to use. If either (1) the hazard class (taxonomic group) of one or more species does not match at least one of the hazard class(es) of the herbicide you intend to use or (2) if the combination of activity category and hazard class results in a double dash (--), then no use limitations apply. Note all applicable codes (11-19). These codes are translated in the Use Limitations table (p 27)

Hazard Class	Herbicide Activity Category				
	a	b	c	d	e
AQ	11, 17	11, 17	11, 17	11, 15, 16, 17	11, 17
PM	11, 17	--	11, 17	11, 16, 17, 19	11
PD	11, 17	11, 17	--	11, 16, 17, 19	11

## Use Limitation Codes

- Combine Hazard Class and Activity Category to determine the Use Limitation(s) that apply to the Active Ingredient being selected.



# DPR's Pesticide Use Limitations

- Methods of application, restrictions, or prohibitions that apply to any given Active Ingredient being considered for use in proximity of Endangered Species (ES) habitat.
- This is the “prescription” for use of any Active Ingredient (AI) considering the proximity of an application to ES habitat, AI's Activity Category, and its Hazard Class to that species.
- The Use Limitations attempt to protect endangered species from harm due to pesticide use while allowing normal agricultural pest control.



# DPR's Pesticide Use Limitations - Endangered Species Spray Drift

Use limitation code 17: For spray able or dust formulations: when the air is calm or moving away from habitat, commence applications on the side nearest the habitat and proceed away from the habitat. When air currents are moving toward habitat, do not make applications

within 200 yards by air or 40 yards by ground upwind from occupied habitat. The county agricultural commissioner may reduce or waive buffer zones following a site inspection, if there is an adequate hedgerow, windbreak, riparian corridor or other physical barrier that substantially reduces the probability of drift.



# DPR's Pesticide Use Limitations -Endangered Species

## Soil Active Herbicides

- Use limitation # 19: Do not apply within 30 yards upslope of habitat, unless a suitable method is used to contain or divert runoff waters.

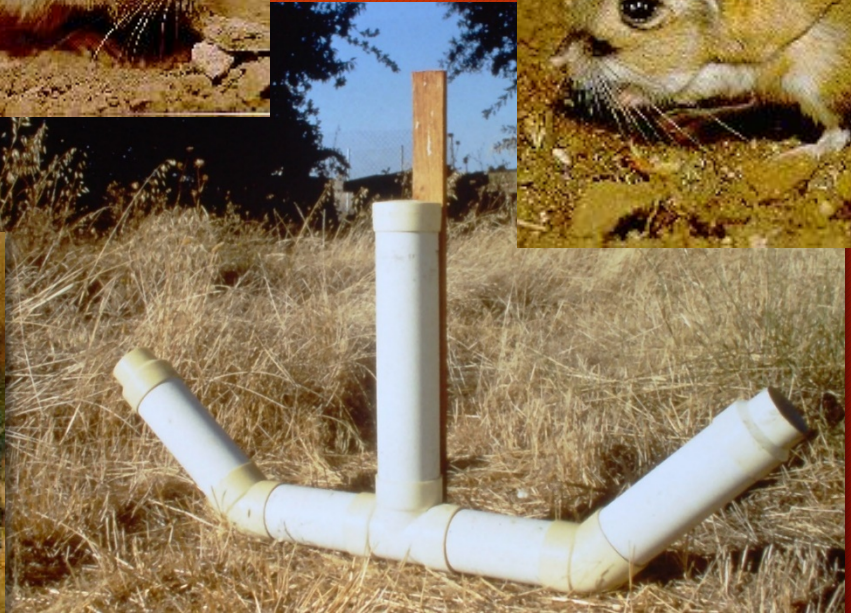




# DPR's Pesticide Use Limitations

## Rodenticide Grain Baits

Use Limitation #2 Modified bait stations for use in endangered kangaroo rat or San Joaquin kit fox habitat





# Endangered Species Program Activities

**Zorrita de San Joaquín (*Vulpes macrotis mutica*)**  
Status -- Federal: Endangered; California: Threatened

**San Joaquin kit fox (*Vulpes macrotis mutica*)**  
Status - Federal: Endangered; California: Threatened

## Kangaroo Rats: Tracks and other signs of their presence

Kangaroo rats are active primarily at night and can seldom be seen in the day! Such activity patterns make it nearly impossible to rely on visual sightings. Instead, they rely on tracks and other signs of their presence in the vicinity of their colonies. Kangaroo rats shuffle along slowly for feeding purposes, kangaroo rats set all their tracks on the ground (see back of this card). Kangaroo rats drag in the sand when in the photo.

ling, kangaroo  
this case only  
s (see back).  
sign of kangaroo  
their burrow

## Ratas Canguro: Huellas y otros rastros de su presencia

Las ratas canguro están activas principalmente durante la noche, y rara vez se les observa durante el día. Debido a estos patrones de actividad, uno depende primordialmente de actividad, uno métodos de detección indirectos para identificarlas cerca de sus colonias. Cuando se están alimentando, arrastran las patas lentamente, y posan las cuatro patas en el suelo (ver dibujo al reverso). Al ir caminando de esta manera, arrastran la cola, y van dejando rastros con la misma, como se ve en la foto. Cuando viajan, se desplazan por medio de saltos, y van dejando un rastro únicamente con los dedos de las patas traseras (ver dibujo al reverso).

Otro signo de la presencia de ratas canguro son los "baños de polvo": estos son sitios cercanos a su madriguera, en los cuales se revuelcan en el polvo. Estos "baños de polvo" le sirven a las ratas para proteger su pelaje y deshacerse de los parásitos como piojos y demás, y son utilizados generalmente por la misma rata una y otra vez. Las ratas canguro frecuentemente hacen un tapón de tierra blanda en la entrada de su madriguera durante el día. Esto les ayuda a mantener niveles apropiados de

## Elevated Bait Station for Ground Squirrel control in Kangaroo Rat and Kit Fox habitats



are extremely susceptible to rodenticides placed in bait stations. Elevating existing bait stations onto 12-inch legs with recessed legs (see photo) prevents them from entering the bait stations. Any material may be used for building the bait stations. It is important to adhere to the bait stations shown in the back of this card.

California Department of Pesticide Regulation  
Endangered Species Program  
[www.cdpr.ca.gov/docs/endspec/index.htm](http://www.cdpr.ca.gov/docs/endspec/index.htm)

Photo: Desley Whisson/UCD Extension

La zorrita del Valle pequeño tamaño, puntas de las orejas blancas. **Biología** - Están activas durante la noche, evitan la zorra se alinean reptiles, y a

The San Joaquin kit fox is distinguished by its small size (four to six pounds), large ears, long legs, buffy tan color and black-tipped tail. The kit fox primarily lives in the flatlands of California's Central Valley; south of Contra Costa County. **Biology** - Kit foxes spend most of the day in their soft, sandy burrows and leave hunting for the twilight and nighttime hours. They feed primarily on ground squirrels, kangaroo rats, desert cottontails, mice, insects, carrion and ground-nesting birds. Kit foxes appear to survive without drinking water, an adaptation to desert conditions, --

California Department of Pesticide Regulation  
Endangered Species Program  
[www.cdpr.ca.gov/docs/endspec/index.htm](http://www.cdpr.ca.gov/docs/endspec/index.htm)



California Department of Pesticide Regulation  
Endangered Species Project  
[www.cdpr.ca.gov/docs/endspec/index.htm](http://www.cdpr.ca.gov/docs/endspec/index.htm)



- Publish educational materials for pesticide applicators (English & Spanish). Materials are made available online or distributed through County Agricultural Commissioners, PAPA, CAPCA, etc.



# DPR's Endangered Species Program Activities



Habitats of 11 Endangered Species  
Included in the San Francisco Bay Area  
Pesticide Injunction

- Develop information to help the public understand pesticide injunctions:  
Salmonids, California Red Legged Frog, San Francisco Bay



Endangered Species Program  
Pest Mgmt. & Licensing Branch  
Dept. of Pesticide Regulation



Notes on the Pesticide Injunction  
and Order for Protection of  
California Red-Legged Frog



Endangered Species Program  
Dept. of Pesticide Regulation  
[pmoreno@cdpr.ca.gov](mailto:pmoreno@cdpr.ca.gov)  
(916)324-3888

Salmonid Court-Order and Injunction on  
Pesticide Use for the Protection of  
Endangered Species  
- Update -



Dept of Pesticide Regulation  
Endangered Species Program





# DPR's Pesticide Classification Process for Protection of Endangered Species

## RODENTICIDE GRAIN BAITS



# Activity Category

- Products are grouped by activity categories that broadly define their mode of action and use patterns that in turn determine potential routes of exposure to listed species.

Activity Categories of Grain Bait Rodenticides

Activity Category	Description
<b>g</b>	Field use chronic toxicant grain bait
<b>h</b>	Field use acute toxicant grain bait
<b>k</b>	Structural use rodenticide

# Active Ingredients' Hazard Class

- Each AI is classified by potential hazard class.

Active Ingredients (Rodenticides)

Active Ingredients	Activity Category	Hazard Class						
		Bait Box (BB)	Carnivorous Birds (CB)	Granivorous Birds (GB)	Salt Marsh Harvest Mouse (HM)	Kit Fox (KF)	Kangaroo Rats (KR)	Very Limited Habitat (LH)
Brodifacoum	k	X	X	X	X	X	X	X
Bromadiolone	k	X	X	X	X	X	X	X
Bromethalin	k	X	X	X	X	X	X	X
Chlorophacinone	g	X	X	X	X	X	X	X
Difenacoum	k	X	X	X	X	X	X	X
Difethialone	k	X	X	X	X	X	X	X
Diphacinone	g	X	X	X	X	X	X	X
Pival	k	X	X	X	X	X	X	X
Vitamin D3	k	X	X	X	X	X	X	X
Warfarin	k	X	X	X	X	X	X	X
Zinc Phosphide	h	X	X	X	X	X	X	X



# Hazard Class

## Species Descriptions

### GIANT KANGAROO RAT



Photo: B. "Moose" Peterson/WRP

**Scientific Name:** *DIPODOMYS INGENS*

**Federal Status:** Endangered

**Species Description:**

A nocturnal rodent, largest of the genus, measuring up to 13 inches from nose to end of tail.

**Habitat Description:**

NEED LEVEL TERRAIN & SANDY LOAM SOILS FOR BURROWING. ANNUAL GRASSLANDS ON THE WESTERN SIDE OF THE SAN JOAQUIN VALLEY, MARGINAL HABITAT IN ALKALI SCRUB.

**Hazard Class:**

FS, KR

- This relates to the Active Ingredients table, and shows which types of hazards may impact a given species.

# Use Limitation Codes

## Use Limitation Codes for Rodenticide Grain Baits

The following table identifies use limitation codes for each combination of hazard class (BB, CB, etc.) and rodenticide activity category (g-k). Use the row(s) that corresponds with the hazard class (taxonomic group) of the species in the section to be treated and the rodenticide activity column(s) that corresponds with the rodenticide(s) you intend to use. Note all applicable codes (1-34). The double dash (- -) indicates that no use limitations apply. These codes are translated in the Use Limitations table (p 29)

Hazard Class	Rodenticide Grain Bait Activity Category		
	g	h	k
BB	7	7	7
CB	1D	- -	7
GB	1B, 1C	1B, 1C	7
HM	7 or 34	7 or 34	7
KF	1, 2, 3, 4	3	7
KR	8	8	7
LH	33	33	33

- Combine Hazard Class and Activity Category to determine the Use Limitation(s) that apply to the Active Ingredient being selected.



Use Limit Code #2 Refers in part to the use of modified box bait stations for use in endangered kangaroo rats or San Joaquin kit fox habitat



- Elevated bait stations: elevating existing bait stations onto 12 in high platforms with recessed legs prevents k-rats from accessing the bait.
- The platform must not have a solid base and the legs should be inset at least 2 inches
- In San Joaquin kit fox habitat, the entrance should be no greater than 3 inches.

## Modifying a "T" Bait Station for Ground Squirrel control in Kangaroo Rat habitat



Traditional bait Stations do not exclude kangaroo rats

Modified bait stations exclude kangaroo rats while allowing access to squirrels

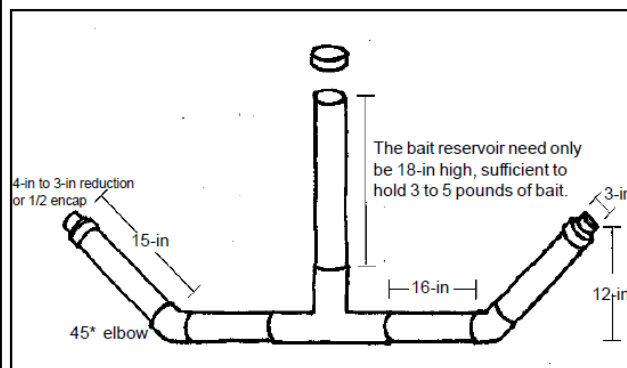
**Inverted "T" design:** 45 -degree PVC elbows and pipe can be placed on each entrance of the traditional station such that the entrance to the station is 12 inches above ground level (see above picture). Ground squirrels generally begin visiting these bait stations at the same time as they would visit the traditional station (1-6 days). In the event that ground squirrels do not visit the modified station, the extension should be removed, and the station pre-baited with clean (i.e., no poison) grain. Once the squirrels begin feeding from the station, the extensions can be replaced, poison grain added and the squirrels will continue to visit the station.



California Department of Pesticide Regulation  
Endangered Species Project

www.cdpr.ca.gov

## Modified "T" Bait Station Design



Specifications

## Elevated Bait Station for Ground Squirrel control in Kangaroo Rat habitat



Photo: Desley Whisson/UCD Extension

Kangaroo rats are extremely susceptible to rodenticides placed in traditional bait stations. Elevating existing bait stations onto 12-inch high platforms with recessed legs (see photo) prevents them from accessing the bait station. Any material may be used for building the platform, but due to Kangaroo rat behavior it is important to adhere to the specifications shown in the back of this card.

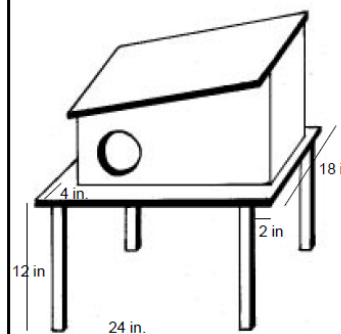


California Department of Pesticide Regulation  
Endangered Species Project

www.cdpr.ca.gov

5/30/97

## Elevated Bait Station Design and Specifications



- 1) The Platform should be 12 inches high.
- 2) The platform must not have a solid base. Kangaroo rats are able to jump or climb to heights of up to 24 inches if they are presented with a solid base. Even a platform top with a 3-inch overhang over a solid base is easily negotiated by kangaroo rats.
- 3) The legs of the platform should be inset at least 2-inches to stop Kangaroo rats from climbing into the station. Ramps or wire mesh should

not be added to improve accessibility by ground squirrels as Kangaroo rats will learn to use these to climb into the bait station.

4) Vegetation should be cleared from around the base of the platforms. Kangaroo rats will be able to climb into the stations if vegetation is present or if the stations are placed against a 1/2 inch (or finer) wire mesh fence. Keep entrances away from fence posts and large rocks that might be used by Kangaroo rats to gain access.

5) The bait station should be secured to the platform to prevent it from being tipped over by other animals. It may be necessary to add a lip to the top of the platform to stop grain spillage. Any grain spilled from bait stations should be picked-up daily.

6) In rangeland areas, bait stations should be firmly secured to the ground to avoid them being tipped over by livestock.

7) In Kit fox range, the entrance to the station should be no greater than 3 inches in diameter.

For more information contact: Desley Whisson, UC Davis (916)754-8644



Bringing It All Together...

PRESCRIBE

DPR's Online Database  
Application for Protection  
of Endangered Species

# P.R.E.S.C.R.I.B.E.

- Pesticide
- Regulation
- Endangered
- Species
- Custom
- Real-time
- Internet
- Bulletin
- Engine





California Department of

## Pesticide Regulation

[About DPR](#) | [Join E-Lists](#) | [A-Z Index](#) | [Contact Us](#)

Google Custom Search



[HOME](#)

[PROGRAMS](#)

[DATABASES](#)

[NEWS/PUBLICATIONS](#)

[QUICK LINKS](#)

### **PRESCRIBE Online Database Application**

[Back to Endangered Species Project](#)

Welcome to Pesticide Regulation's Endangered Species Custom Realtime Internet Bulletin Engine (PRESCRIBE). The PRESCRIBE online database application was developed to help pesticide applicators find out if they have any endangered species in the vicinity of their application site, and the use limitations applicable to the pesticide product(s) they intend to use.

This site provides information consistent with the U.S. Environmental Protection Agency (U.S. EPA)'s Interim Measures Bulletins for Protection of Endangered Species for user-selected sites and pesticides. Habitat data is from the Department of Fish and Wildlife (DFW) Natural Diversity Database, the U.S. Fish and Wildlife Service and the National Marine Fisheries Service. Pesticide toxicology follows U.S. EPA standards and advice of DFW Pesticide Investigations Unit. Habitat protection measures are from U.S. Fish and Wildlife Service biological opinions and local plans developed through the cooperation of the County Agricultural Commissioners and Sealers Association, the Department of Fish and Wildlife and the California Department of Food and Agriculture. This program is implemented by the Department of Pesticide Regulation on behalf of U.S. EPA under Section 7(a)(1) of the Endangered Species Act.



**PRESCRIBE MOBILE APP**

»» [About PRESCRIBE, PDF \(6 mb\)](#), [En Español, PDF \(5.6 mb\)](#)

»» [How to Navigate PRESCRIBE](#)

»» [Start a PRESCRIBE query](#)

»» [PRESCRIBE Mobile App](#)

For content questions, contact:  
Leopoldo Moreno  
1001 I Street  
Sacramento, CA 95812-4015  
(916) 324-3888  
E-mail: [Polo.Moreno@cdpr.ca.gov](mailto:Polo.Moreno@cdpr.ca.gov)

[HOME](#)[PROGRAMS](#)[DATABASES](#)[NEWS/PUBLICATIONS](#)[QUICK LINKS](#)[--> CalPIP Home](#)[--> My Selections](#)

DATA SOURCE: ?

PRESCRIBE ▼

**Endangered Species Bulletin**

Location ?

[--> County](#)[--> MTRS](#)[--> Zip Code](#)

Product ?

[--> Name Search](#)[--> Help](#)**CALIFORNIA PESTICIDE INFORMATION PORTAL (CALPIP) APPLICATION**

Endangered Species Custom Bulletin

**Select County**[About PRESCRIBE \(Endangered Species Bulletin\)](#)[PRESCRIBE Mobile](#)**Step 1. Select County**

To begin, select a county where your pesticide use will occur then click on the Select button.

**Available Counties(58):**

01 ALAMEDA  
02 ALPINE  
03 AMADOR  
04 BUTTE  
05 CALAVERAS

**NOTE: You must specifically select one or more county(s) before making a Meridian/Township/Range/Section (MTRS) selection.**

Select

**Counties Selected (1):**

22 MARIPOSA

Unselect

Unselect All

**To continue, click on Next.**

Next

Reset

Start Over



[CalPIP Home](#)[My Selections](#)

DATA SOURCE: ?

PRESCRIBE ▼

**Endangered Species Bulletin**

Location ?

[County](#)[MTRS](#)[Zip Code](#)

Product ?

[Name Search](#)[Help](#)**CALIFORNIA PESTICIDE INFORMATION PORTAL (CALPIP) APPLICATION**

Endangered Species Custom Bulletin

**Select Township-Range-Section****Step 2: Choose one or more townships and sections; hold down the Ctrl key for multiple selections.**

From available townships under the county(s) you've chosen, select the Township-Range blocks (COMTR), and then the associated Sections (COMTRS)

**Available COMTR****Township and Range under selected county(s) (60):**

22 M01N22E  
22 M01S17E  
22 M01S18E  
22 M01S21E  
22 M01S22E

Select

**Township(s) Selected (1):**

22 M06S18E

Unselect

Unselect All

**Available COMTRS****Sections within selected Township-Range (36):**

22 M06S18E 10  
22 M06S18E 11  
22 M06S18E 12  
22 M06S18E 13  
22 M06S18E 14

Select

**Section(s) Selected (2):**

22 M06S18E 11  
22 M06S18E 14

Unselect

Unselect All

**To continue, click Next.**

Next

Reset

Start Over



California Department of

# Pesticide Regulation

[About DPR](#) | [Join E-Lists](#) | [A-Z Index](#) | [Contact Us](#)

[HOME](#)

[PROGRAMS](#)

[DATABASES](#)

[NEWS/PUBLICATIONS](#)

[QUICK LINKS](#)

[CalPIP Home](#)

[My Selections](#)

DATA SOURCE: ?

▼

**Endangered Species Bulletin**

Location ?

[County](#)

[MTRS](#)

[Zip Code](#)

Product ?

[Name Search](#)

[Help](#)



## CALIFORNIA PESTICIDE INFORMATION PORTAL (CALPIP) APPLICATION

Endangered Species Custom Bulletin

### Species Located

Step 3. Non-target species in selected section(s) by status:

→ **[FT] MARIPOSA PUSSYPAWS**

→ **[FT] STEELHEAD - CENTRAL VALLEY DPS**

→ **[R] MARIPOSA LUPINE**

Species Status Key:

[FE] = Federal Endangered

[FT] = Federal Threatened

[FPE] = Federal Proposed Endangered

[FPT] = Federal Proposed Threatened

[R] = Rare, Not Currently Listed

**To continue, click Next to select the products that you intend to use.**

Version 2019.04 (2017 PUR Data Update)



[CalPIP Home](#)[My Selections](#)

DATA SOURCE: ?

PRESCRIBE ▼

**Endangered Species Bulletin**

Location ?

[County](#)[MTRS](#)[Zip Code](#)

Product ?

[Name Search](#)[Help](#)**CALIFORNIA PESTICIDE INFORMATION PORTAL (CALPIP) APPLICATION**

Endangered Species Custom Bulletin

**Select Product / Labels**

## Step 4. Product Search

To identify the products that you intend to use, please enter product name or keyword into the Search Box. When you hit the Search button, you will see a list of search results in the Available Products box below. Click on the product name and click Select to select the product.

**Enter full or partial product name to search :** (Use '%' for wildcard between strings. Enter a '\' in front to indicate the first word of a label. Put a '\' at the end to indicate the last word of a label. )

**Click to Display Available Product Labels by Letter:**[A](#) [B](#) [C](#) [D](#) [E](#) [F](#) [G](#) [H](#) [I](#) [J](#) [K](#) [L](#) [M](#) [N](#) [O](#) [P](#) [Q](#) [R](#) [S](#) [T](#) [U](#) [V](#) [W](#) [X](#) [Y](#) [Z](#) [Misc](#)**Product [Registration Number]s found by searching *Crossbow* (6) :**

CROSSBOW HERBICIDE [62719- 260-AA- 55467]

CROSSBOW L [62719- 260-AA- 34704]

CROSSBOW WEED AND BRUSH KILLER [464- 589-ZB]

CROSSBOW WEED AND BRUSH KILLER [62719- 67-AA]

CROSSBOW [62719- 260-AA- 5905]

**Selected Product [Registration Number]s (1):**

CROSSBOW HERBICIDE [62719- 260-AA- 55467]

**To continue, click [Next](#) or [Submit](#) to query the use limit on the products you've chosen for the species identified in your locations.**



## CALIFORNIA PESTICIDE INFORMATION PORTAL (CALPIP) APPLICATION

Endangered Species Custom Bulletin

### Endangered Species Pesticide Use Limits

#### Step 5. Use Limit Codes for Selected Products

Pesticide use limitations for the products that you have selected, applicable to the species identified in your locations, if they exist, are listed below. Scroll to the bottom of the page to see a description/instruction of the use limits.

#### For protection of the following species:

- [T] MARIPOSA PUSSYPAWS
- [T] STEELHEAD - CENTRAL VALLEY DPS
- [R] MARIPOSA LUPINE

#### That occur in the following selected sections:

County	Township	Range	Sections
22 Mariposa	06S	18E	11 , 14

#### When using selected products:

Product	Use Limits
CROSSBOW HERBICIDE	11 , 17

#### That contain these active ingredients (chemicals):

- TRICLOPYR, BUTOXYETHYL ESTER
- 2,4-D, BUTOXYETHANOL ESTER

#### Observe Use Limits for Selected Products:

##### Code Use Limitations

- 11 Occupied Habitat: Do not use in currently occupied habitat except: (1) if specified in Species Descriptions, or (2) in organized habitat recovery programs, or (3) for selective control of invasive exotic plants.
- 17 Spray Drift: For sprayable or dust formulations: when the air is calm or moving away from habitat, commence applications on the side nearest the habitat and proceed away from the habitat. When air currents are moving toward habitat, do not make applications within 200 yards by air or 40 yards by ground upwind from occupied habitat. The county agricultural commissioner may reduce or waive buffer zones following a site inspection, if there is an adequate hedgerow, windbreak, riparian corridor or other physical barrier that substantially reduces the probability of drift.



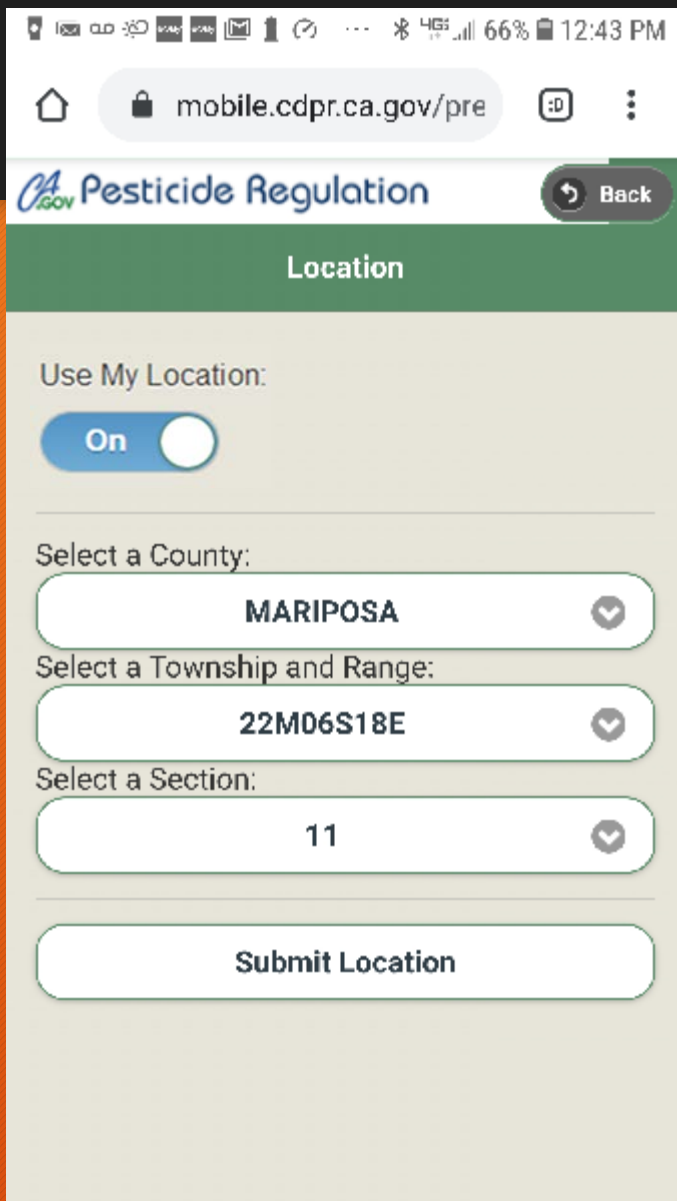
# PRESCRIBE Mobile



PRESCRIBE is now available for mobile devices such as smart Phones, tablets, etc.

It can be accessed at:  
<https://mobile.cdpr.ca.gov/prescribe>

# PRESCRIBE Mobile



The screenshot shows the mobile interface of the PRESCRIBE application. At the top, the status bar displays various icons and the time 12:43 PM. Below the status bar is a browser address bar showing the URL 'mobile.cdpr.ca.gov/pre'. The main header features the 'CA.gov Pesticide Regulation' logo and a 'Back' button. A green bar with the text 'Location' serves as a section header. The form includes a 'Use My Location:' toggle switch set to 'On'. Below this are three dropdown menus: 'Select a County:' with 'MARIPOSA' selected, 'Select a Township and Range:' with '22M06S18E' selected, and 'Select a Section:' with '11' selected. Each dropdown has a chevron icon on the right. At the bottom of the form is a 'Submit Location' button.

## Location search

Use My Location: Easy to use, particularly for those not familiar with the Township/Range/Section (TRS) coordinates system. The program finds the corresponding County and TRS coordinates based on where your mobile device is at that moment.



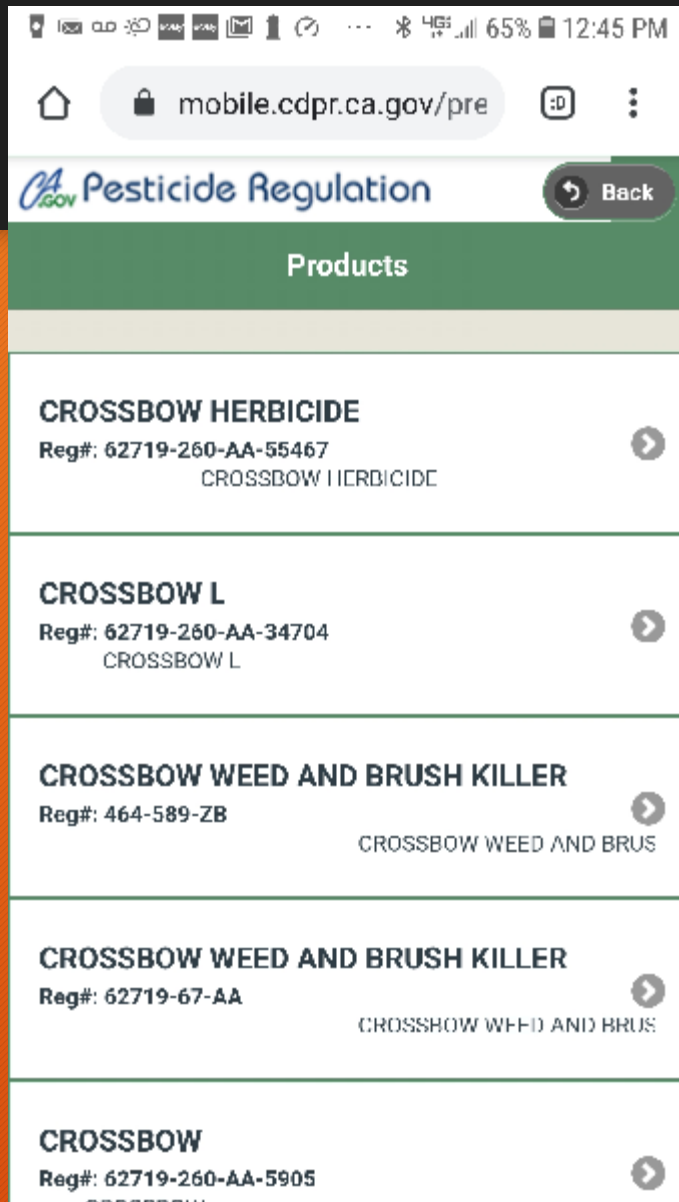
# PRESCRIBE Mobile

The screenshot shows a mobile web browser interface for the PRESCRIBE Mobile app. At the top, the status bar displays various icons and the time 12:44 PM. The browser address bar shows the URL `mobile.cdpr.ca.gov/pre`. Below the address bar is a header with the `CA.gov` logo and the text "Pesticide Regulation", followed by a "Back" button. A green bar with the text "Product Search" is positioned below the header. The main content area is light gray and contains the following elements: a section titled "Location Parameters:" with fields for "County: MARIPOSA", "Township: 06S", "Range: 18E", and "Section: 11"; a section titled "Enter Product Name Keyword or EPA Registration #:" with a text input field containing the word "Crossbow"; and a large, rounded "Search" button at the bottom.

## Product Search

- Type the product name or U.S. EPA Registration Number, then...
- Tap the "Search" button.

# PRESCRIBE Mobile



## Product Results' Screen

- By tapping on a product's box, a "ticker" scrolls the full name of the product or EPA Registration Number.
- By tapping in the middle of a product box we get to the full report.



# PRESCRIBE Mobile

## Full Report Screen

- By tapping on each box, it can be expanded.

mobile.cdpr.ca.gov/prescrit

**CA Pesticide Regulation** Back

### Full Report

For the following location:

County: MARIPOSA  
Township: 06S  
Range: 18E  
Section: 11

The following product has these use limits:

Product: CROSSBOW HERBICIDE

**+ Active Ingredients**

Use Limits: 11, 17

**+ Use Limits Key**

The following product has these use limits:

Product: CROSSBOW HERBICIDE

**- Active Ingredients**

- TRICLOPYR, BUTOXYETHYL ESTER
- 2,4-D, BUTOXYETHANOL ESTER

Use Limits: 11, 17


**- Use Limits Key**


**11**  
Occupied Habitat: Do not use in currently occupied habitat e...


**17**  
Spray Drift: For sprayable or dust formulations: when the air ...

The following species are protected:

**- Species List**

 **[T] MARIPOSA PUSSYPAWS**  
MARIPOSA PUSSYPAWS

 **[T] STEELHEAD - CENTRAL VAL...**  
STEELHEAD

 **[R] MARIPOSA LUPINE**  
MARIPOSA LUPINE

**+ Special Status Key**

New Search

California Department of

Pesticide Regulation



## STEELHEAD - CENTRAL VALLEY DPS



Photo by Richard T. Grost

### Scientific Name

*ONCORHYNCHUS MYKISS*  
*IRIDEUS*

### Species Description

A genetically distinct and evolutionarily significant anadromous or freshwater fish related to rainbow and cutthroat trout.

### General Habitat Information

POPULATIONS IN THE

# PRESCRIBE Mobile

## Species Details Screen



# PRESCRIBE – Bookmark available



## PRESCRIBE

Pesticide Regulation's Endangered Species Custom Real-time Internet Bulletin Engine

The Department of Pesticide Regulation has developed a free, online tool that allows pesticide users to quickly and easily identify local habitat for endangered animals and plants. Called **PRESCRIBE**, it advises applicators when special restrictions are necessary to protect endangered or threatened species.

**PRESCRIBE** is an easy-to-use replacement for more than 2,500 pages of printed bulletins for virtually all of California's 58 counties. **PRESCRIBE** can locate more than 1,000 endangered, threatened, and other special status species within almost 80,000 one-square-mile land sections in the state.

When using **PRESCRIBE**, you first select the county-township-range-section where you intend to apply pesticides, and then the pesticide product you plan to use. **PRESCRIBE** looks up species that occur there, and the active ingredients in your product. (PRESCRIBE

can search for 30,000 pesticide products by brand name.) It then generates a report of listed species in the area and what use limitations may apply.

To use **PRESCRIBE**, go to [www.cdpr.ca.gov](http://www.cdpr.ca.gov), click on the red "Endangered Species" link, and then on "PRESCRIBE." If you need help, ask your County Agricultural Commissioner's office for advice or call DPR's Endangered Species Project, 916-324-3888.

To go directly to the PRESCRIBE Web site, go to [www.cdpr.ca.gov/docs/es/psrcint.htm](http://www.cdpr.ca.gov/docs/es/psrcint.htm)



**NEW! PRESCRIBE**  
for mobile devices.

Easy to use, fully  
accessible at:

<https://mobile.cdpr.ca.gov/prescribe>



Department of Pesticide Regulation Endangered Species Project

1001 I Street, P.O. Box 4015 // Sacramento, CA 95812

[www.cdpr.ca.gov](http://www.cdpr.ca.gov) // (916) 324-3888

DPR is one of six boards and departments within the California Environmental Protection Agency



Department of Pesticide Regulation

Endangered Species Project  
[www.cdpr.ca.gov](http://www.cdpr.ca.gov)

## Protecting Endangered Species from Pesticides

Endangered species must be protected from harm that can be caused by pesticides. This is not only the law, but also makes good sense. The Department of Pesticide Regulation (DPR) helps farmers and other pesticide users do this by recommending ways that needed pest control can be done and endangered species protected at the same time.

An important part of DPR's endangered species protection project is the use of computer-based geographic information systems, or GIS for short. GIS helps us pinpoint habitats of endangered and threatened species and develop maps where these species make their homes near agriculture.

We have an online tool called PRESCRIBE (*see details on back*) which allows pesticide users to quickly find out if there are endangered species in their areas of operation. Then the database provides use limitations or alternative methods of application, depending on the pesticide. DPR

works closely with growers, pesticide applicators, County Agricultural Commissioners, wildlife experts, and other local groups to develop workable pest control methods to protect endangered species.

DPR also publishes field identification cards and other instructional materials to assist pesticide users in identifying endangered species and their habitats. We distribute these materials at continuing education seminars and they are also available on our Web site, [www.cdpr.ca.gov](http://www.cdpr.ca.gov), click "Endangered Species."