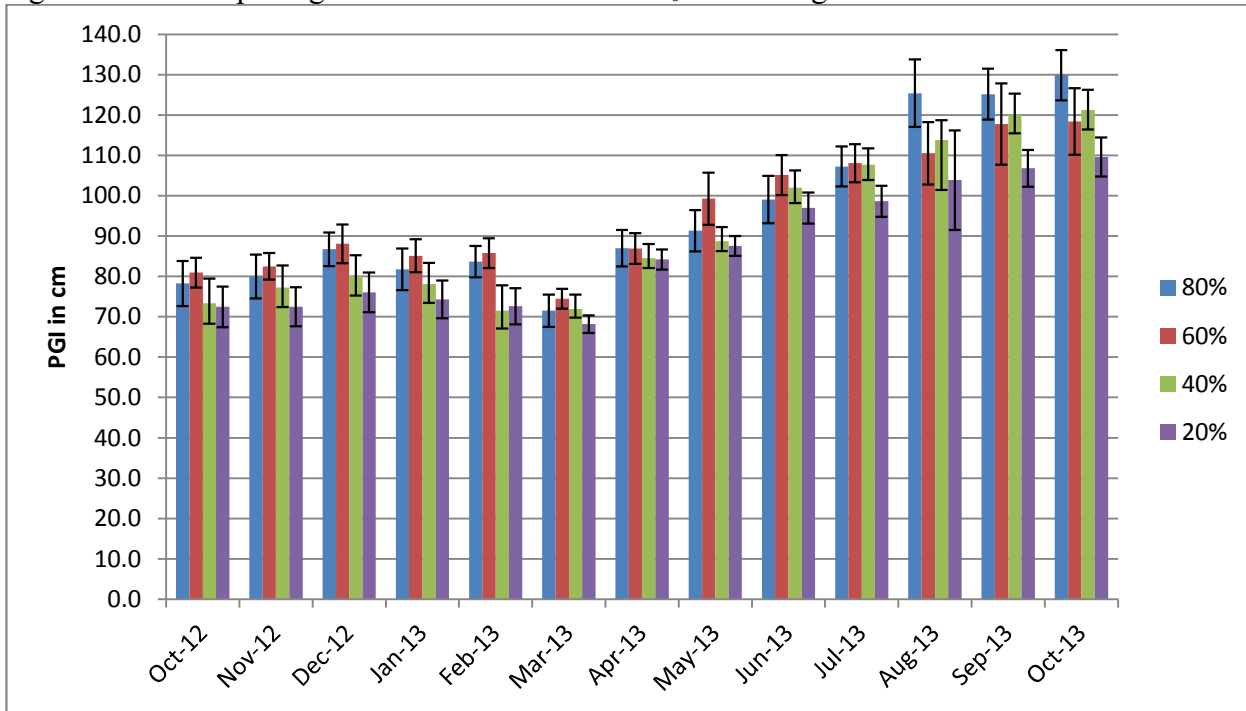


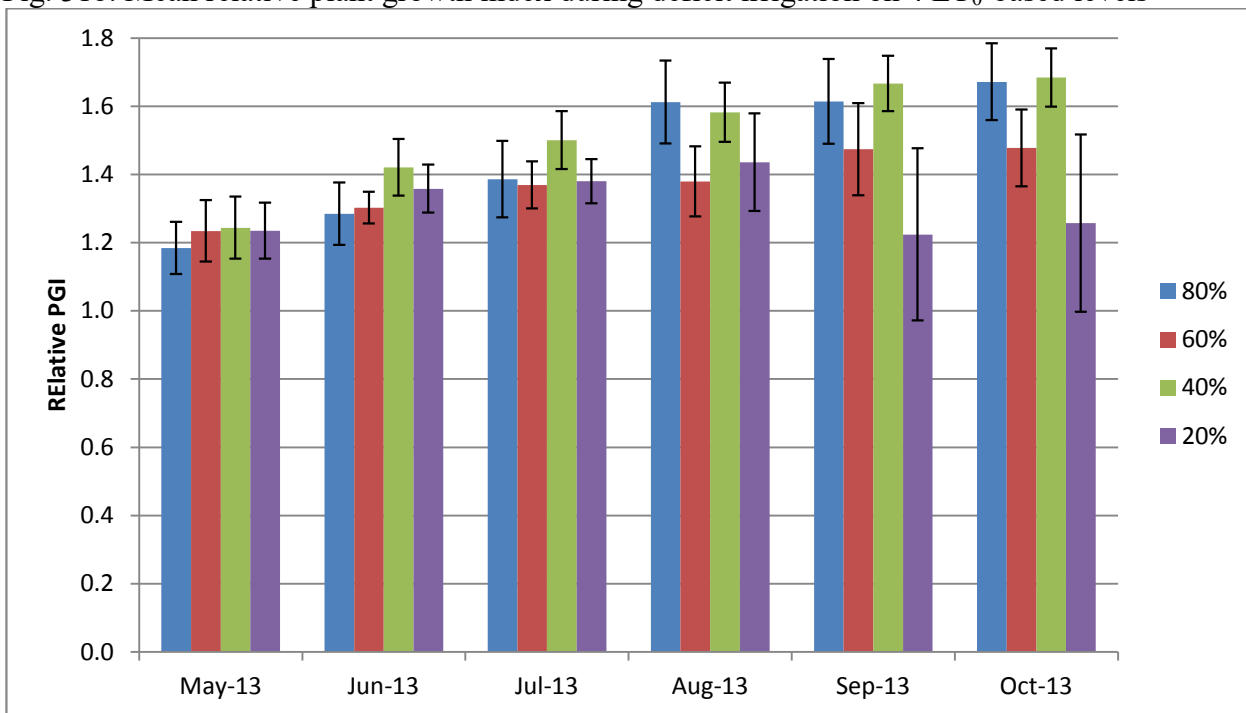
***Teucrium fruticans* ‘Azureum’**

Figure 31a. Mean plant growth index in cm on 4 ET₀-based irrigation levels



Error bars represent \pm 1 SE

Fig. 31b. Mean relative plant growth index during deficit irrigation on 4 ET₀-based levels



Error bars represent \pm 1 SE

Table 25. Mean quality ratings in 6 categories on 4 ET₀-based irrigation levels

<i>Teucrium fruticans</i> 'Azureum'														
foliage		OCT	DEC	JAN	FEB	MAR	APR	MAY	JUN	JUL	AUG	SEP	OCT	AVG
	80%	4.7	4.2	3.8	4.7	4.7	4.8	4.0	3.5	2.8	2.5	2.8	2.3	3.7
	60%	4.8	4.5	3.4	4.2	4.5	4.3	3.7	3.5	3.8	3.4	3.4	3.2	3.9
	40%	4.5	4.8	3.9	4.3	4.2	4.8	3.5	3.2	2.9	3.2	3.6	3.3	3.9
	20%	4.6	4.9	4.0	4.0	4.3	4.4	3.7	3.6	3.6	3.4	3.6	3.6	4.0
flowering		OCT	DEC	JAN	FEB	MAR	APR	MAY	JUN	JUL	AUG	SEP	OCT	AVG
	80%	1.3	2.7	1.0	4.0	4.5	1.2	1.0				1.0	2.0	1.3
	60%	1.3	3.2	1.3	4.0	4.5	1.2	1.0				1.8	4.8	2.2
	40%	1.5	3.3	1.7	5.0	3.8	1.3					2.7	3.8	2.6
	20%	1.5	3.5	1.0	5.0	5.0	1.2					1.3	2.2	1.6
pest tolerance		OCT	DEC	JAN	FEB	MAR	APR	MAY	JUN	JUL	AUG	SEP	OCT	AVG
	80%	5.0	5.0	5.0	5.0	5.0	5.0	5.0	5.0	5.0	5.0	5.0	5.0	5.0
	60%	5.0	5.0	5.0	5.0	5.0	5.0	5.0	5.0	5.0	5.0	5.0	5.0	5.0
	40%	5.0	5.0	5.0	5.0	5.0	5.0	5.0	5.0	5.0	4.3	5.0	5.0	4.9
	20%	5.0	5.0	5.0	5.0	5.0	5.0	5.0	5.0	5.0	5.0	5.0	5.0	5.0
disease resistance		OCT	DEC	JAN	FEB	MAR	APR	MAY	JUN	JUL	AUG	SEP	OCT	AVG
	80%	4.8	4.2	5.0	5.0	5.0	5.0	5.0	5.0	5.0	3.7	5.0	5.0	4.8
	60%	5.0	4.8	4.7	5.0	5.0	4.7	5.0	4.7	5.0	3.4	4.6	5.0	4.7
	40%	5.0	4.8	5.0	5.0	5.0	5.0	5.0	4.3	3.5	3.2	4.8	5.0	4.6
	20%	4.8	4.8	5.0	5.0	4.6	5.0	5.0	4.8	4.5	3.8	4.8	5.0	4.8
vigor		OCT	DEC	JAN	FEB	MAR	APR	MAY	JUN	JUL	AUG	SEP	OCT	AVG
	80%	3.7	3.7	3.7	3.8	4.7	4.8	4.2	4.2	4.5	3.3	3.4	3.8	4.0
	60%	4.0	4.0	3.8	3.7	4.3	4.5	4.0	3.8	4.6	4.4	4.2	4.4	4.1
	40%	3.8	4.5	4.0	4.3	4.5	4.8	4.5	4.8	4.7	3.8	4.4	4.4	4.4
	20%	4.2	4.3	4.0	4.3	4.0	5.0	4.2	4.7	4.8	4.5	4.3	4.2	4.4
overall appearance		OCT	DEC	JAN	FEB	MAR	APR	MAY	JUN	JUL	AUG	SEP	OCT	AVG
	80%	4.0	4.0	3.8	4.7	4.8	4.0	3.3	2.8	2.8	2.3	2.8	2.4	3.5
	60%	4.2	4.3	3.1	4.5	4.7	3.8	3.3	3.2	3.6	3.2	3.5	3.5	3.7
	40%	4.3	4.4	3.5	5.0	4.3	4.0	3.4	3.0	2.8	3.2	3.8	3.5	3.8
	20%	4.2	4.6	3.8	5.0	4.4	3.7	3.5	3.0	3.5	3.7	3.7	3.5	3.9

Table 26. Master Gardener average annual quality ratings and 2-year growth for *Teucrium fruticans* ‘Azureum’

COUNTY	Alameda	SD coastal	SD Inland	San Joaquin	Ventura
Sunset Zone	9	24	21/23	14	21
foliage	3.8	4.3	3.7	4.9	4.0
flower	3.3	2.8	3.0	3.6	3.1
bloom period	Oct-Apr	Oct-April	Dec-Apr	Dec-April	Oct-Apr
pest tolerance	5.0	4.7	4.9	5.0	5.0
disease resistance	4.9	5.0	4.9	5.0	5.0
vigor	3.5	4.2	4.1	4.3	4.0
overall appearance	3.4	4.0	3.9	4.2	3.8
MSMTS					
relative PGI	2.4	3.0	2.2	2.4	2.4
avg ht (cm)	81	118	88	82	69
avg wd (cm)	93	150	118	117	105
AVG HT (in)	32	47	35	32	27
AVG WD (in)	37	59	46	46	41