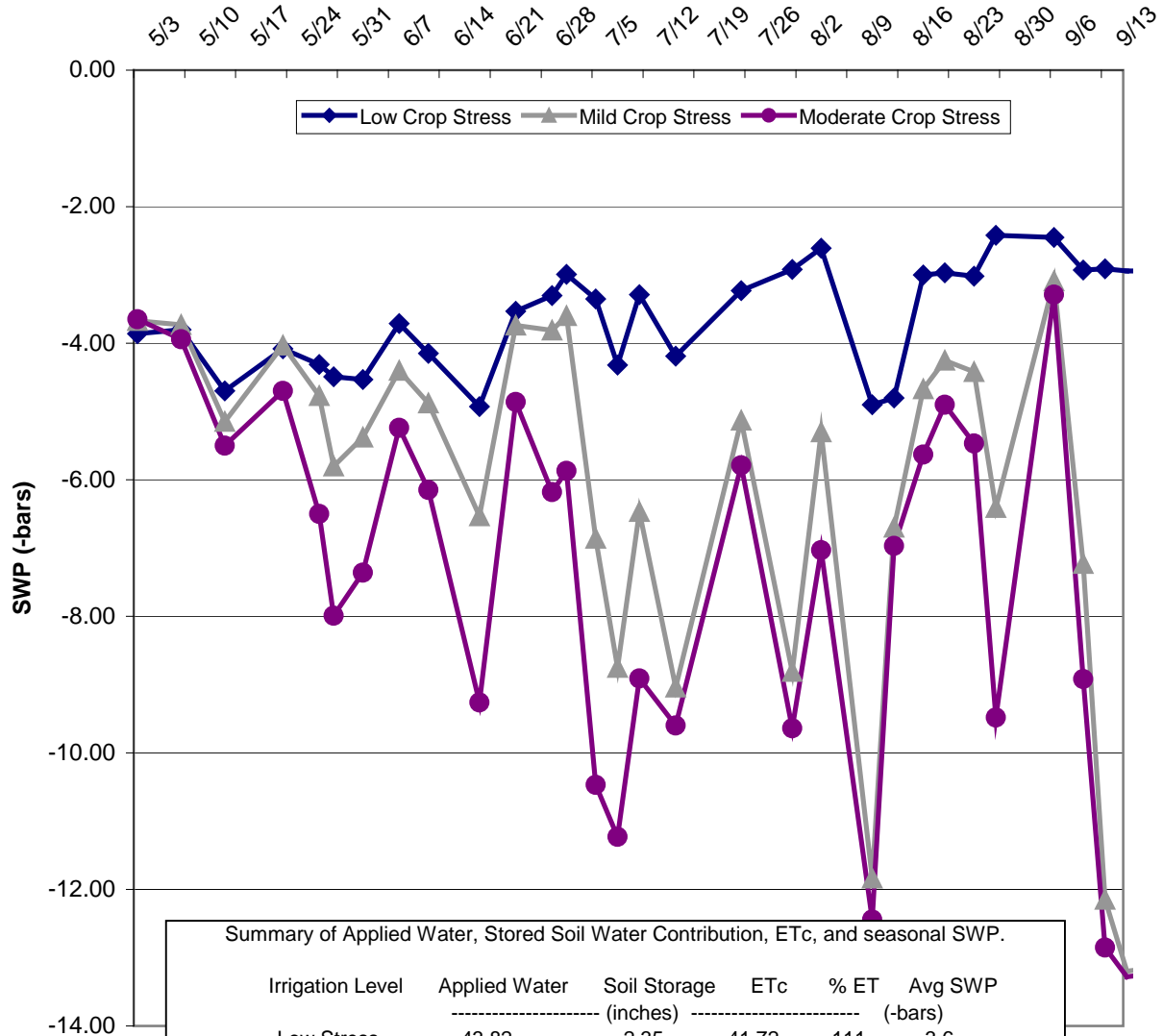


**Example set of midday stem water potential (SWP) data collected in 2002 in English walnut under three different levels of irrigation and corresponding levels of crop water stress, Tehama County, California**



Summary of Applied Water, Stored Soil Water Contribution, Etc, and seasonal SWP.

Irrigation Level	Applied Water	Soil Storage	ETc	% ET	Avg SWP
	-----	(inches)	-----		(-bars)
Low Stress	43.82	2.35	41.72	111	-3.6
Mild Stress	31.23	2.82	41.72	82	-6.2
Moderate Stress	25.80	3.46	41.72	70	-7.4