

Brendon Flynn
Pacific Farms & Orchards, Inc.

Site Specific Soil
Soil Moisture Monitoring
with
Irrigate.net



System Benefits

- **Site-Specific Soil Moisture & Weather Monitoring**
 - No special software is needed, only a standard web browser on your computer. Continuous data is displayed using easy to read graphs and tables.
- **Plant Nutrition, Disease & Pest Models**
 - The use of soil moisture, degree-day calculations, disease models and Eto/Etc information helps to manage farming resources and assist in making quick, informed decisions of field activities.

System Benefits

- **Reliable Wireless Data Transfer**
 - Operate on a dedicated wireless network to get the information needed, when it is needed.
- **Continuous Online Data**
 - The equipment, support and technological knowledge is provided for this data to be a tool used in the ever-advancing agricultural industry.



Soil Moisture Sensors

- **C-Probe**

- The C-Probe is a soil moisture probe consisting of capacitance sensors that can be set from one to six depths on the probe column installed in the soil within a waterproof access tube. The sensors utilize the commercially and scientifically proven capacitance technique to provide highly repeatable readings. The use of either default calibrations or site-specific calibrations enables soil moisture to be determined with a high degree of accuracy across a full range of soil types.

C-Probe





Existing Moisture Sensors

- Depending on the output and power requirements of existing sensors, most can be connected to our system by a simple conversion or interface. This allows the existing sensor with a history of data to be used.
- Some other soil moisture sensors available to work with our telemetry network include:
 - Watermark
 - Electro- Tensionmeter
 - VIRRIB
 - Grow-Point

Display Options

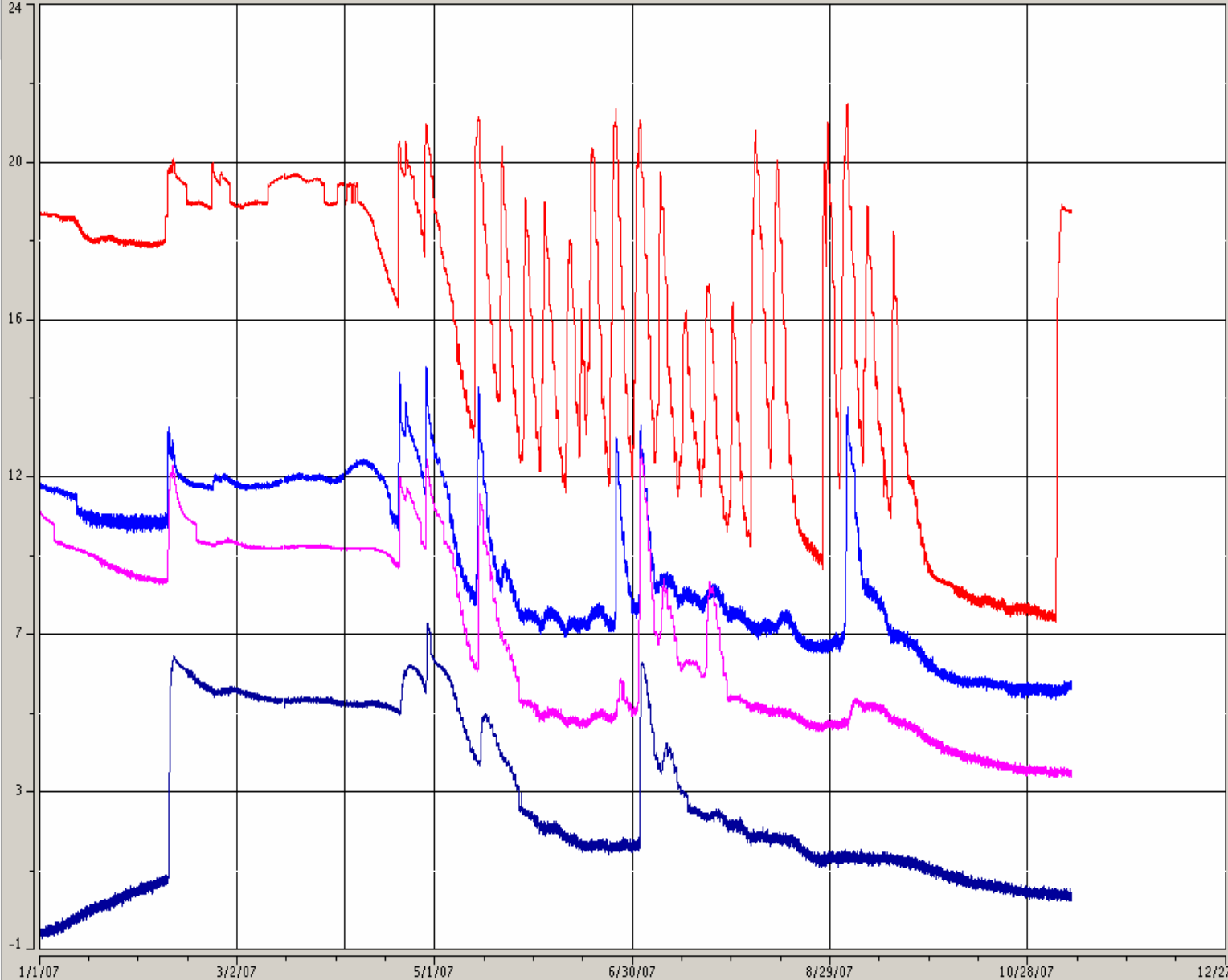
- **Separate Layer Graph**

- These graphs allow you to view infiltration rates, depth of irrigations, irrigation run-times and other events. The sensor graph lines can either be displayed relative to each other or "layered" in order, to display a profile graph.

- **Summed Graph**

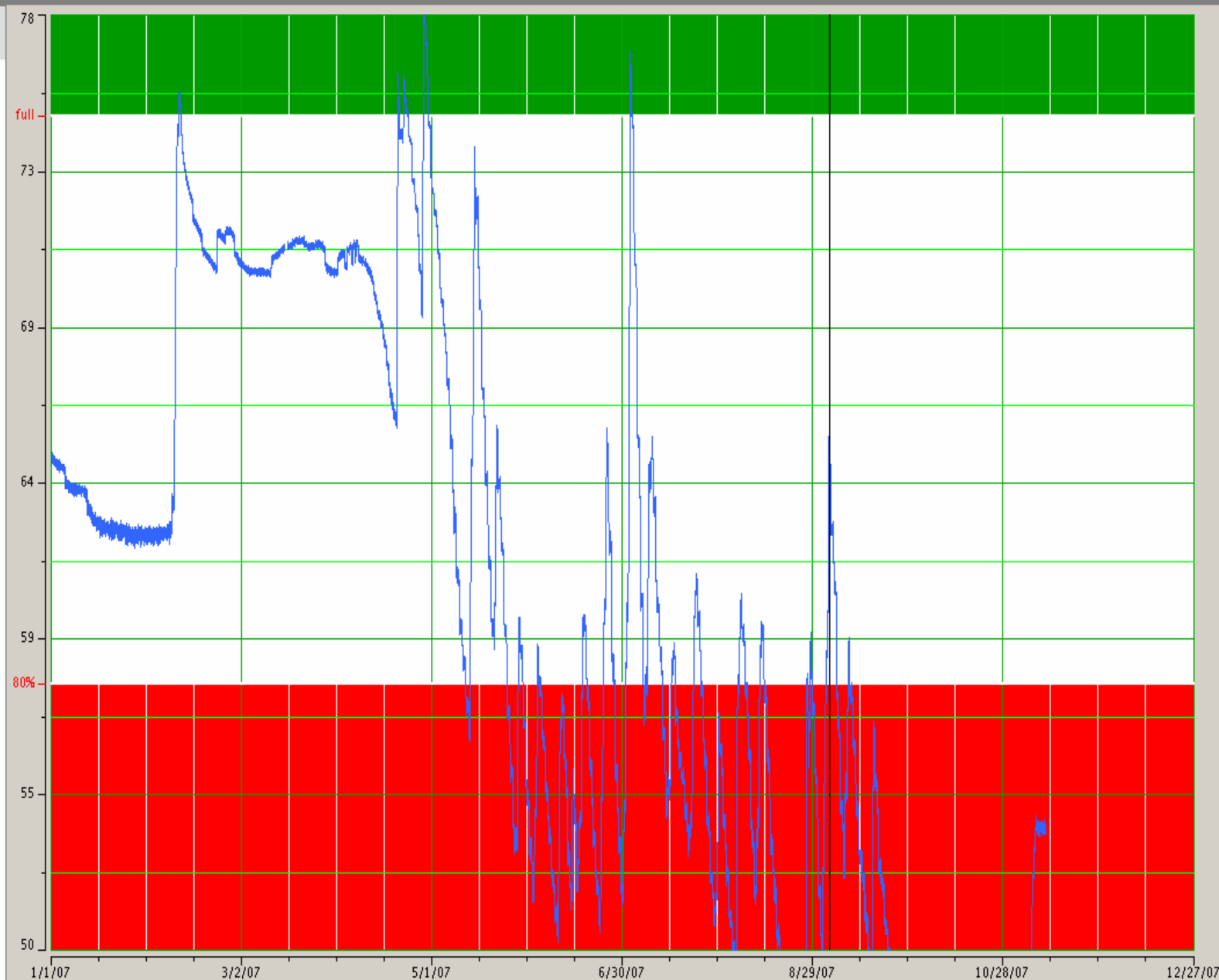
- Used as a quick glance graph to easily determine the overall profile soil moisture content. Agronomic lines can be displayed to reflect the Full Point, Refill Point and other parameters.

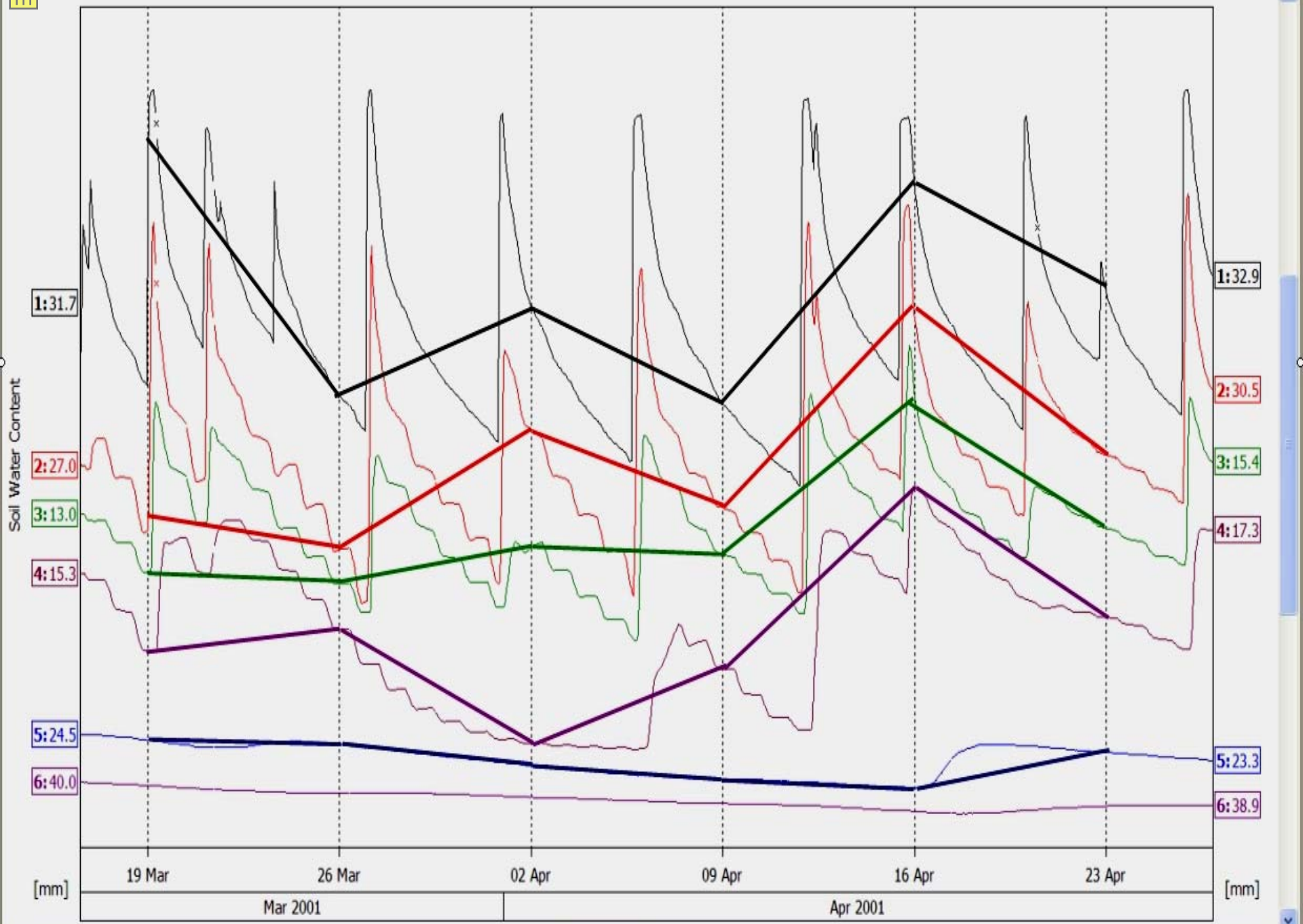
- C-Probe 16 (24445 PF walnuts)
19 vol% (Apr 3, 2007 2:11 PM)
- C-Probe 28 (24445 PF walnuts)
16 vol% (Apr 3, 2007 2:11 PM)
- C-Probe 40 (24445 PF walnuts)
19 vol% (Apr 3, 2007 2:11 PM)
- C-Probe 52 (24445 PF walnuts)
18 vol% (Apr 3, 2007 2:11 PM)

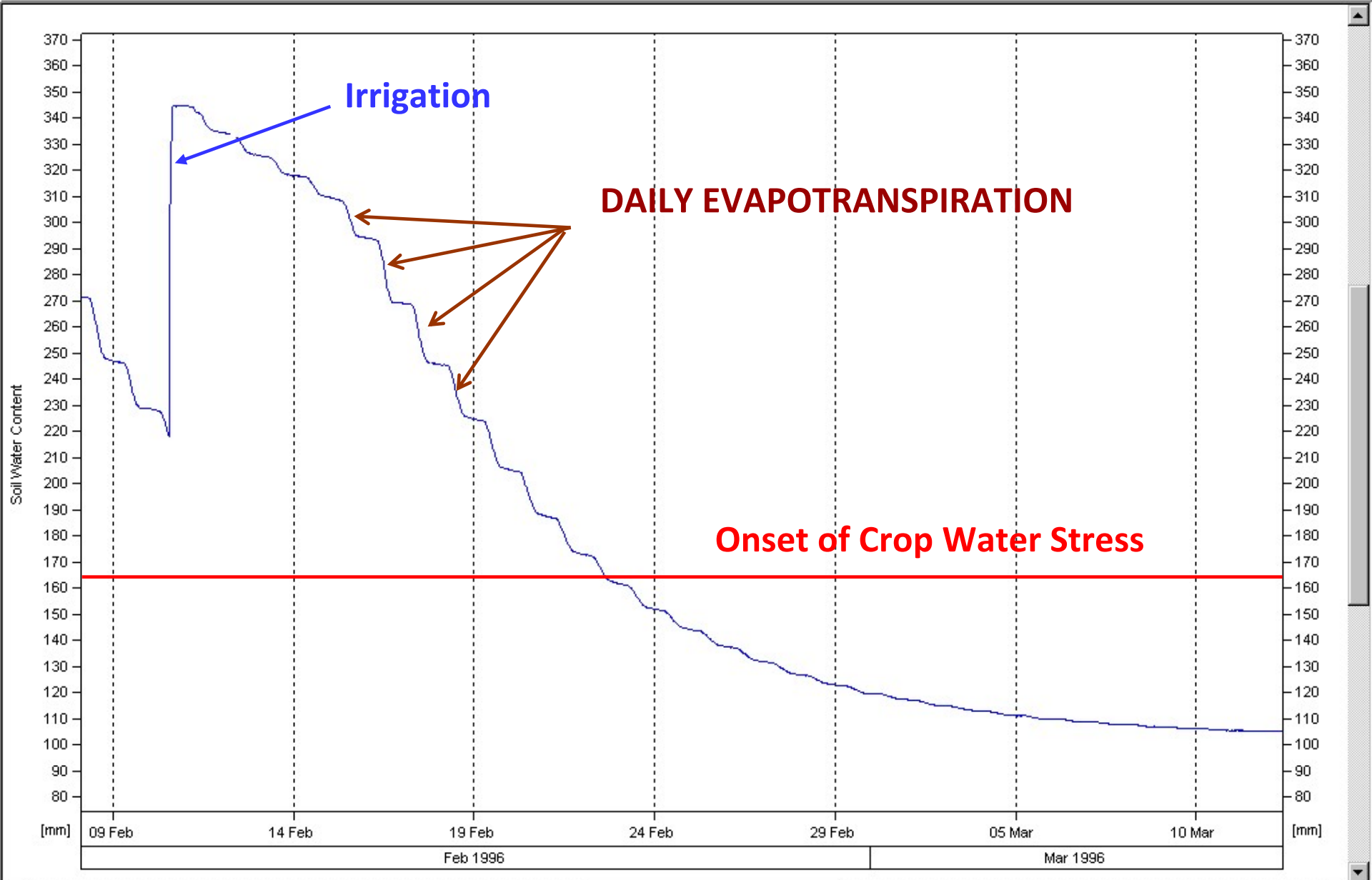
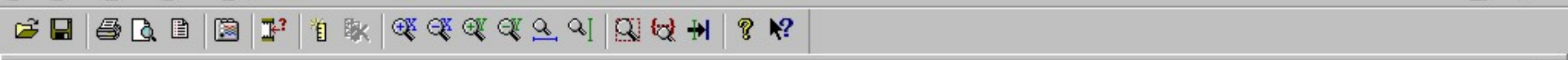




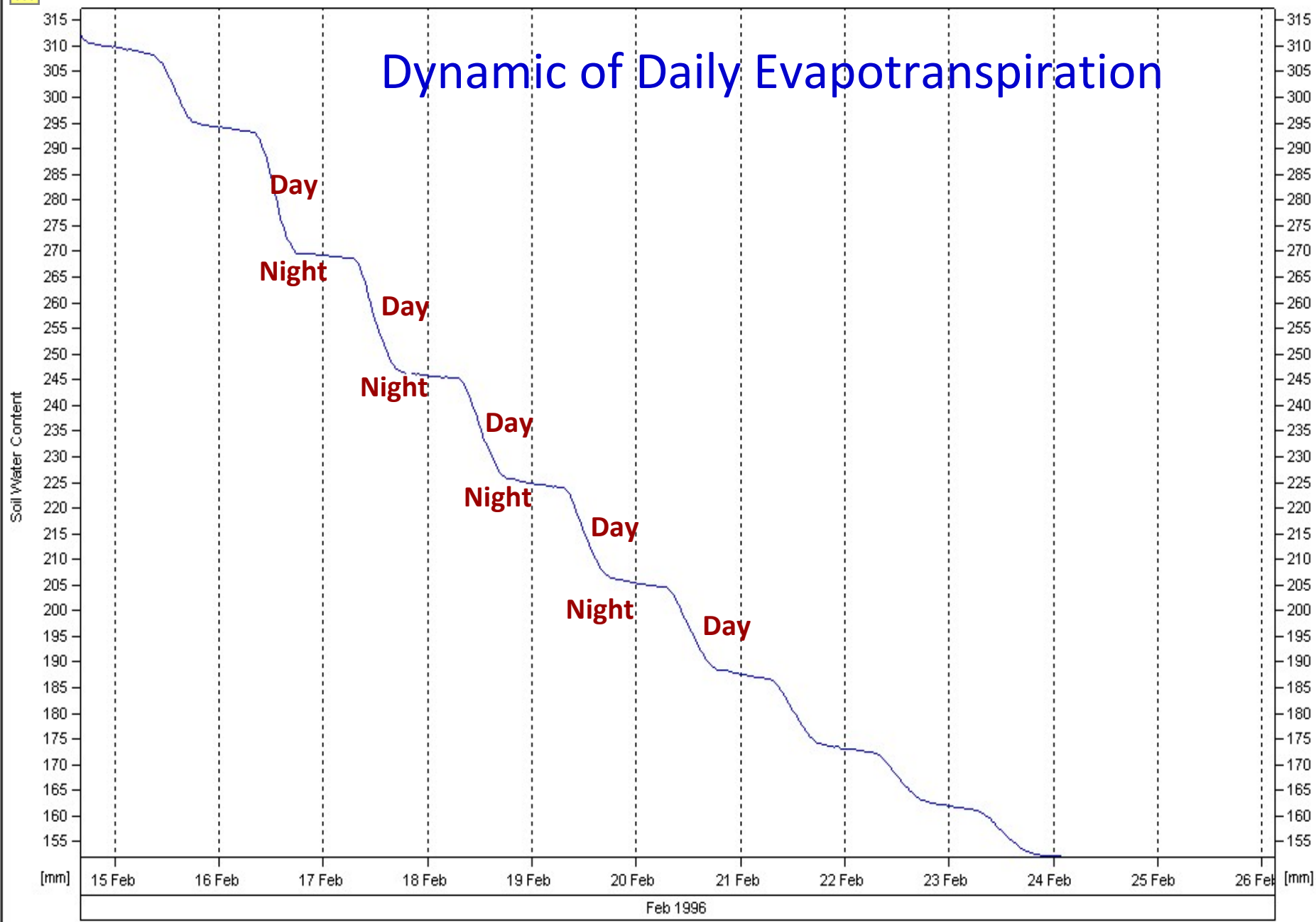
Sum
66 vol% (Sep 3, 2007 6:51 AM)

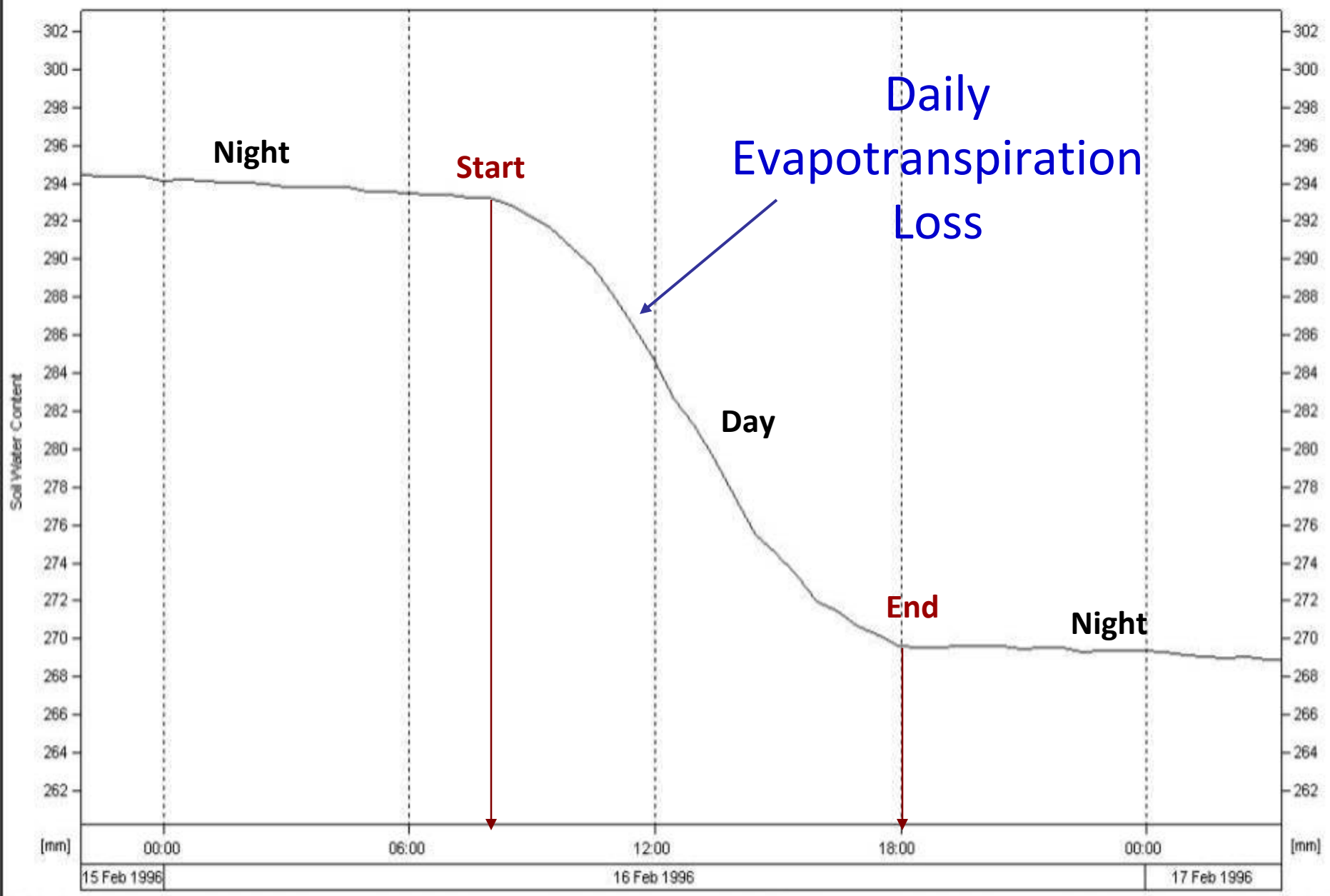






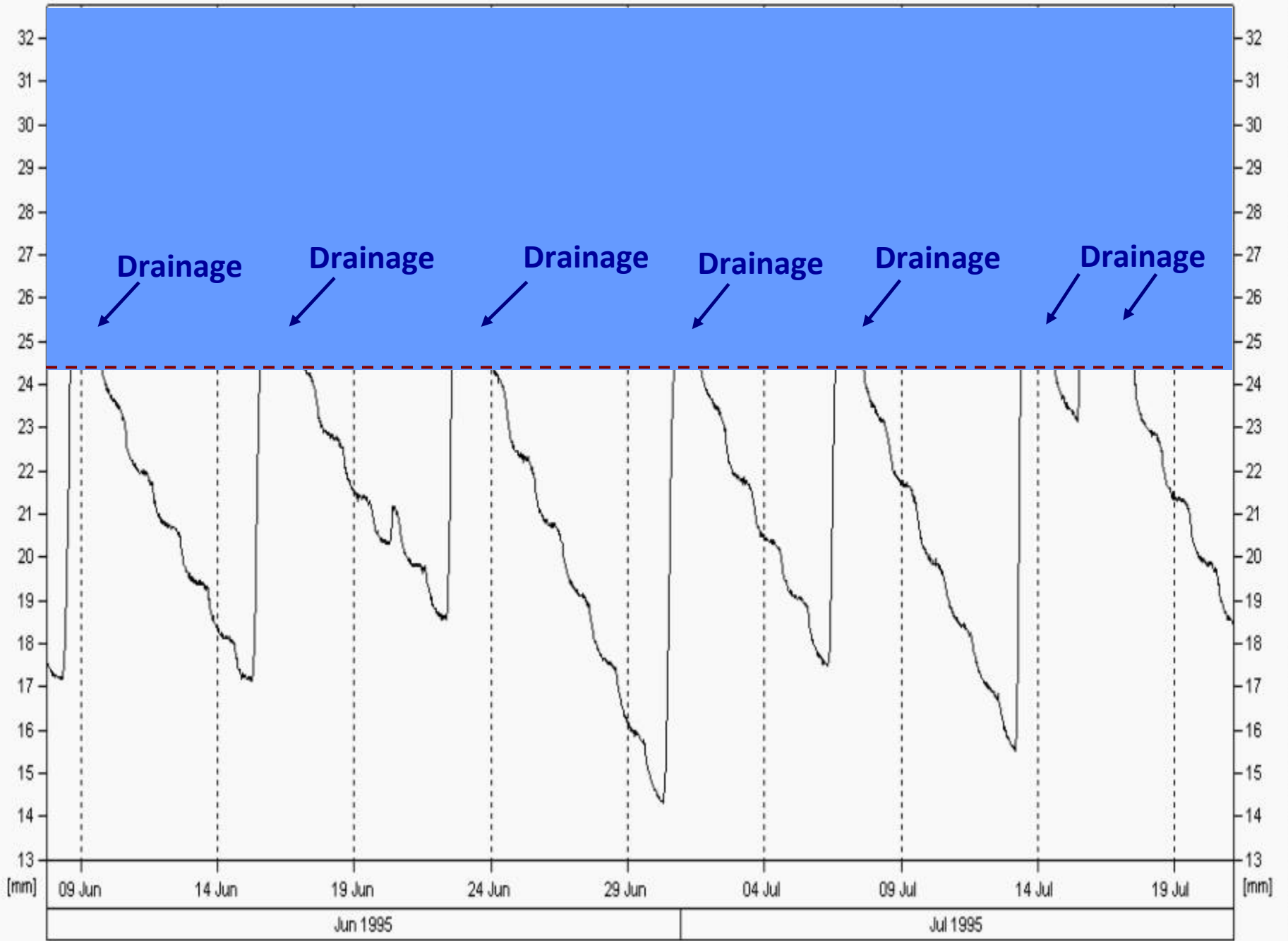
Dynamic of Daily Evapotranspiration







Soil Water Content

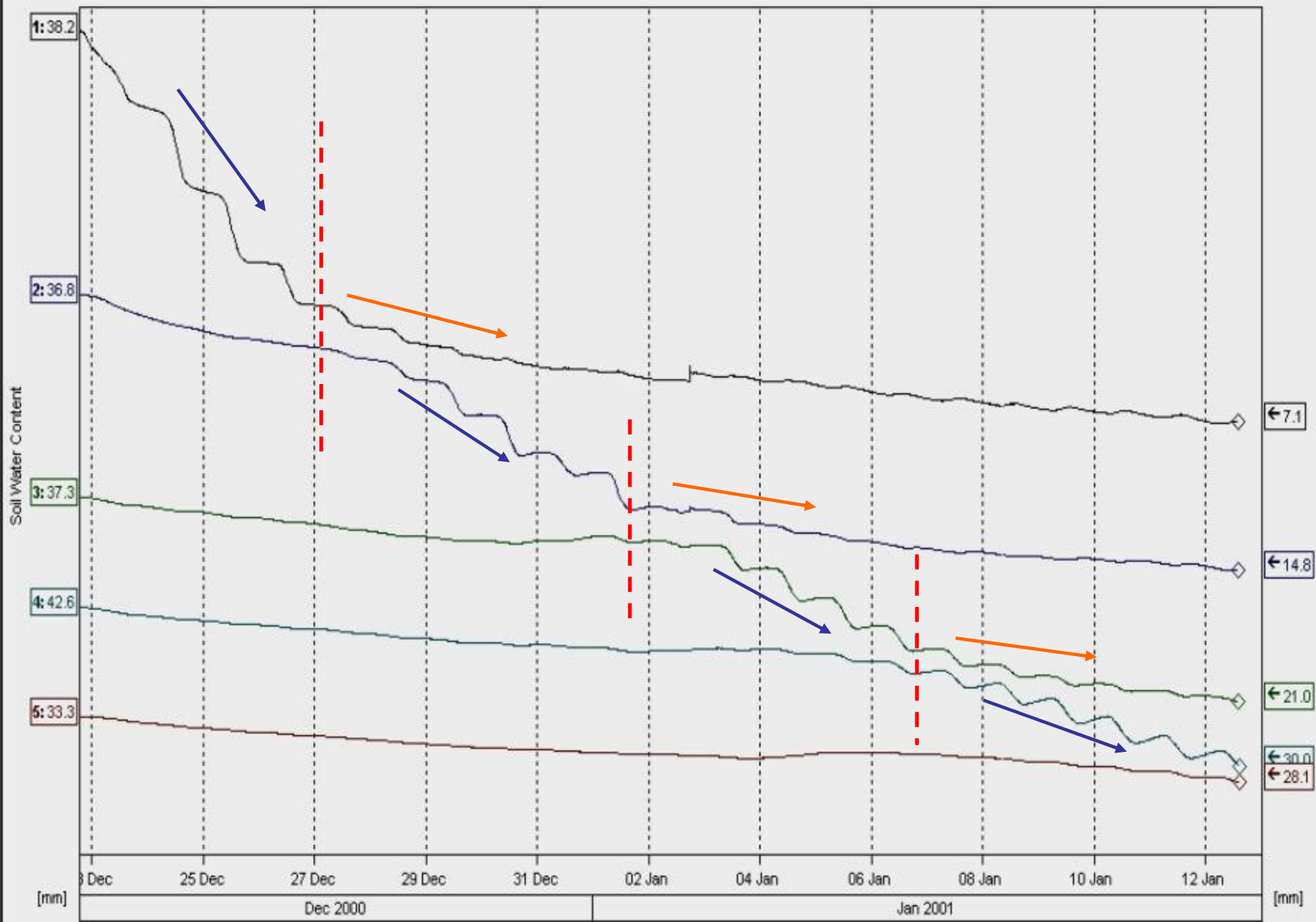


Jun 1995

Jul 1995

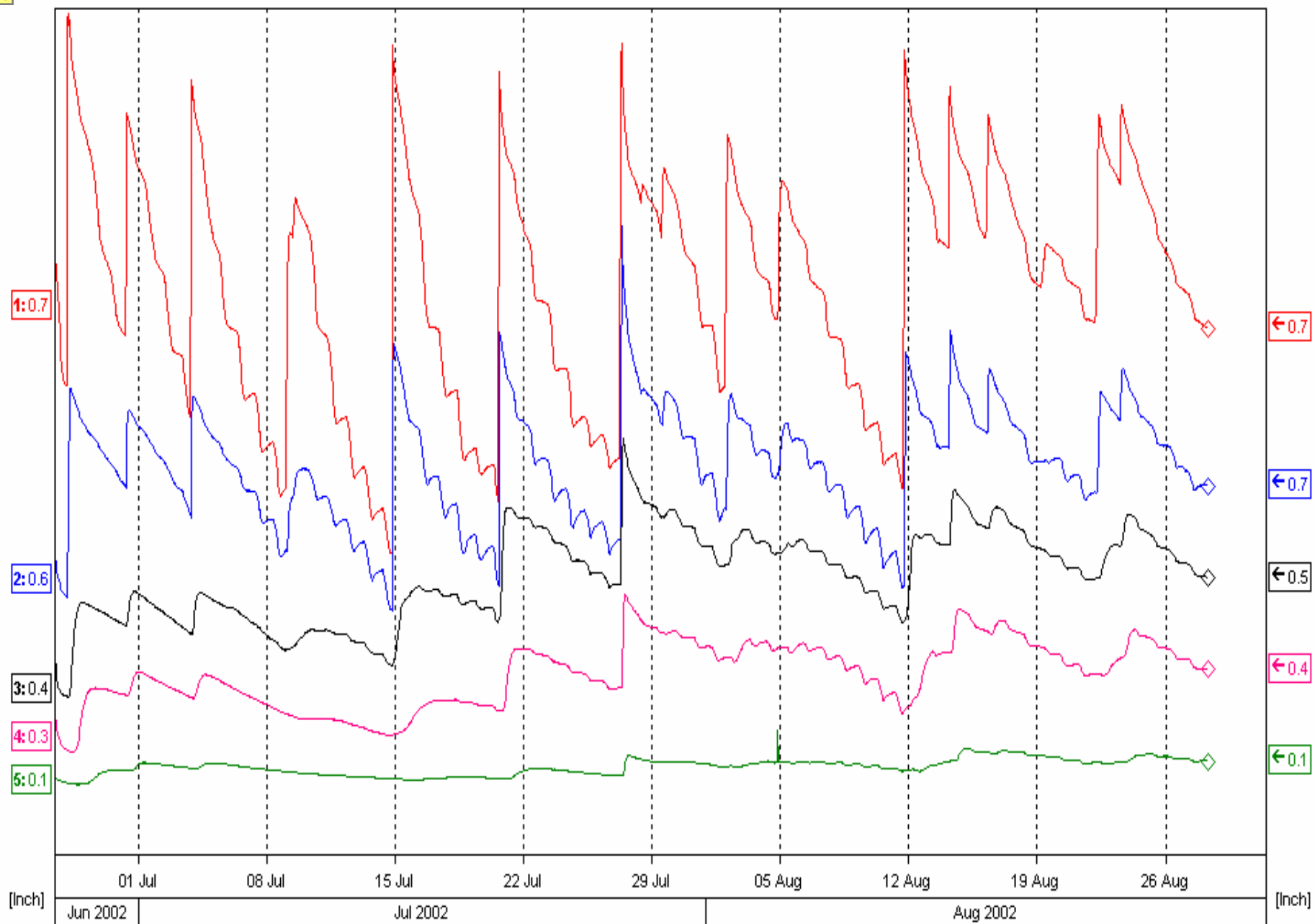
[mm]

[mm]



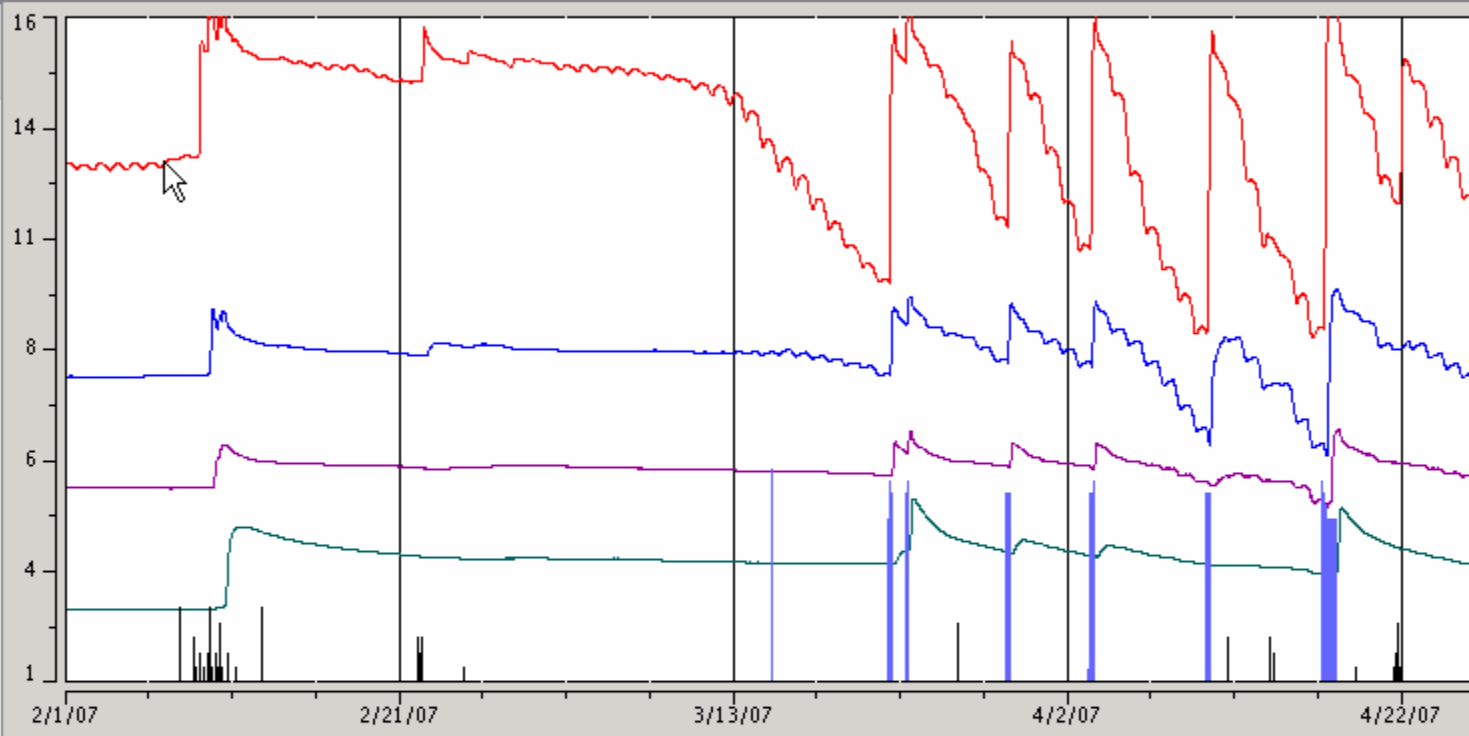


Soil Water Content





- Sentek M P1 D30 (20934 FSI almds)
13 vol% (Feb 1, 2007 12:00 AM)
- Sentek M P1 D60 (20934 FSI almds)
17 vol% (Feb 1, 2007 12:00 AM)
- Sentek M P1 D90 (20934 FSI almds)
18 vol% (Feb 1, 2007 12:00 AM)
- Sentek M P1 D120 (20934 FSI almds)
16 vol% (Feb 1, 2007 12:00 AM)
- Precipitation
0.00 inch (Feb 1, 2007 12:00 AM)
- flow meter
0.0 gallons/h (Feb 1, 2007 12:00 AM)



#	Begin Date	End Date	Duration	Area	
<input type="checkbox"/>	3/14/07 4:06 PM	3/14/07 4:36 PM	30m	20934 FSI almds	irrigation (6.1
<input type="checkbox"/>	3/15/07 8:51 AM	3/15/07 9:36 AM	45m	20934 FSI almds	irrigation (6.5
<input type="checkbox"/>	3/22/07 7:36 AM	3/22/07 3:36 PM	8h	20934 FSI almds	irrigation (4.9
<input type="checkbox"/>	3/23/07 8:36 AM	3/23/07 3:06 PM	6h 30m	20934 FSI almds	irrigation (5.7
<input type="checkbox"/>	3/29/07 7:36 AM	3/29/07 3:51 PM	8h 15m	20934 FSI almds	irrigation (6.5
<input type="checkbox"/>	4/3/07 7:36 AM	4/3/07 4:51 PM	9h 15m	20934 FSI almds	irrigation (6.5
<input type="checkbox"/>	4/10/07 7:21 AM	4/10/07 5:06 PM	9h 45m	20934 FSI almds	irrigation (4.9
<input type="checkbox"/>	4/17/07 7:36 AM	4/18/07 5:51 AM	22h 15m	20934 FSI almds	irrigation (5.3
<input type="checkbox"/>	4/26/07 10:06 AM	4/26/07 9:36 PM	11h 29m	20934 FSI almds	irrigation (6.5
<input type="checkbox"/>	5/1/07 8:53 AM	5/1/07 1:23 PM	4h 30m	20934 FSI almds	irrigation (6.1



For more information

- Contact:

- **Rich Sehorn**

- 1770 Serenity Way
Chico, CA 95928
 - phone: 530 518-2149
fax: 530 893 1342
 - rsehorn@irrigate.net
 - www.irrigate.net

Others sources:

C-probe and telemetry

- AdCon Telemetry
2050 Lyndell Terrace,
Suite 120
Davis, CA 95616
(530)-753-1458
<http://www.sowacs.com>
- AgriLink
2282 Airport Boulevard
Santa Rosa CA 95403
Phone: (707)-522-2274
Fax: (707)-579-1735
<http://www.agrilink.net>

Resistance Blocks and Telemetry

- Irrrometer Company
P.O. Box 2424
Riverside, CA 92516
Phone: (951)-689-1701
Fax: (951)-689-3706
<http://www.irrometer.com>