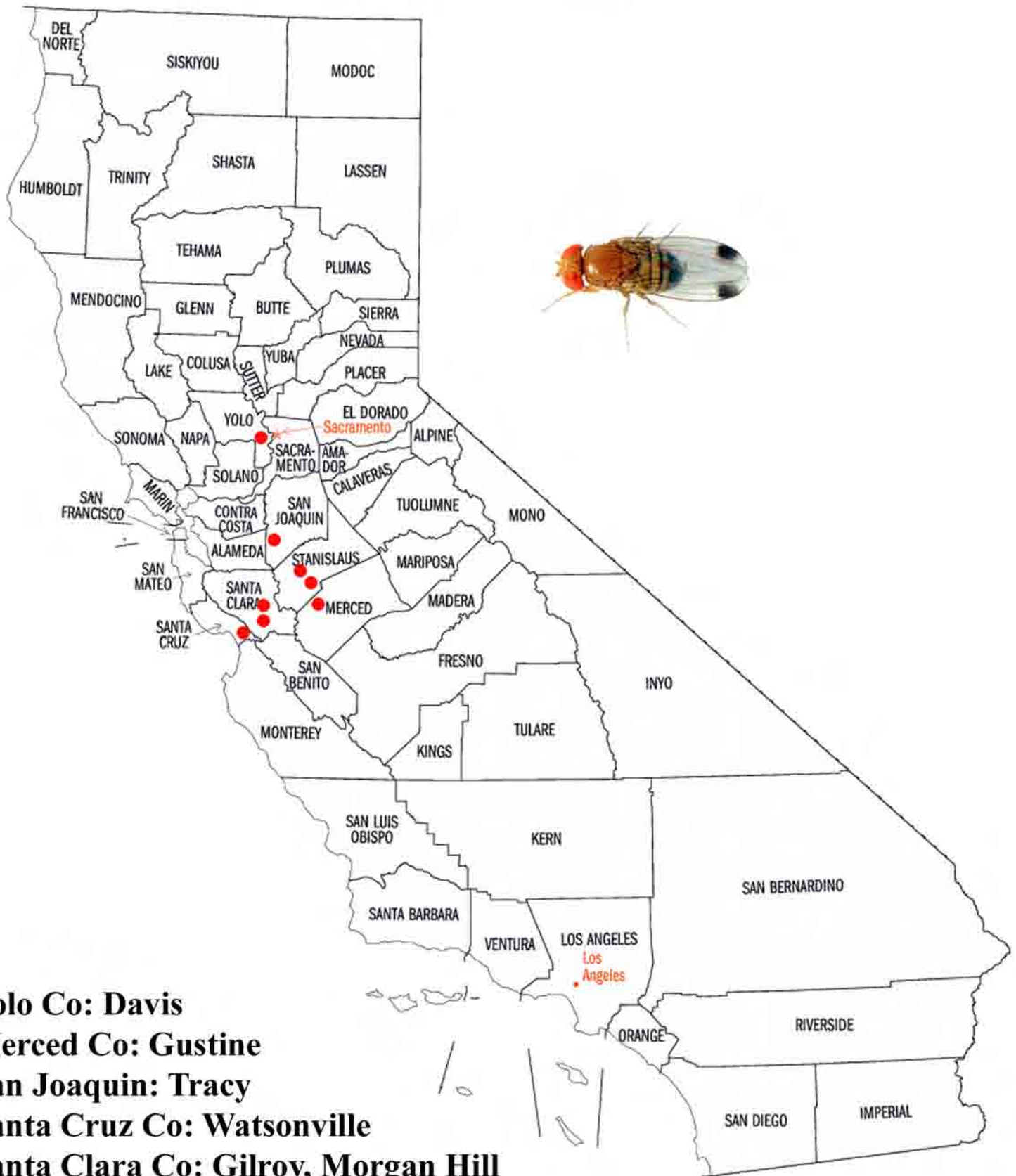


Detections till 28.May.2009



Yolo Co: Davis

Merced Co: Gustine

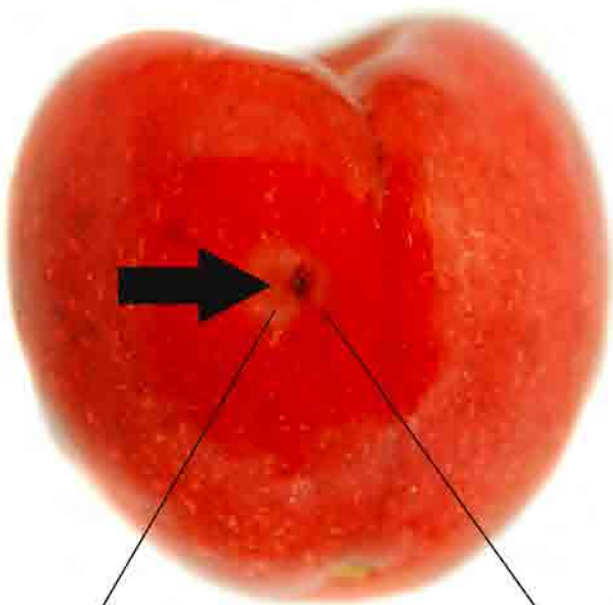
San Joaquin: Tracy

Santa Cruz Co: Watsonville

Santa Clara Co: Gilroy, Morgan Hill

Stanislaus Co: Patterson, Newman, Wesley

Varieties: Black Tartarian, Ruby, Bing



oviposition scar



secondary damage by sap beetles



secondary damage by mold

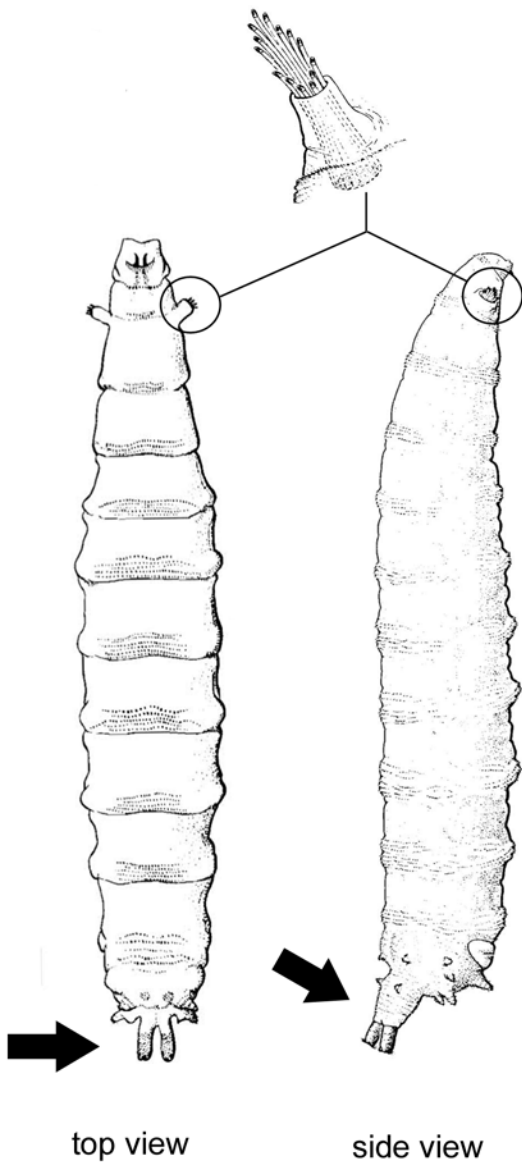


Larva

Pupa

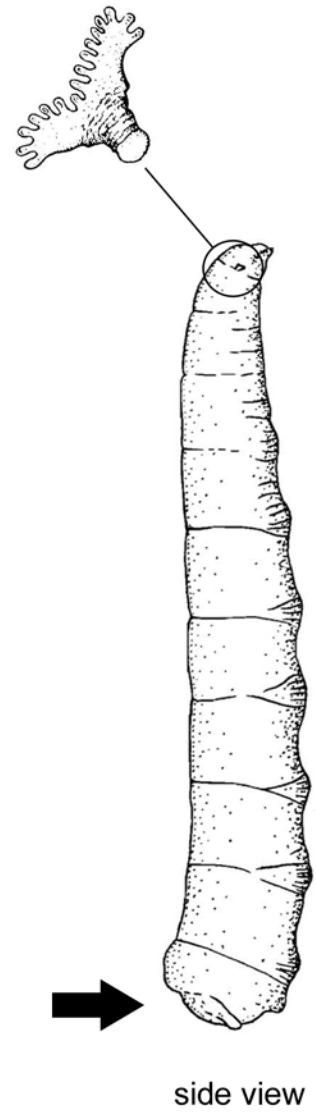
How to distinguish between the cherry fruit fly (*Rhagoletis*) and the vinegar fly (*Drosophila*) larvae in cherries, raspberries and strawberries

***Drosophila* sp.**



size: 3rd instar max 3.5mm

***Rhagoletis* sp.**



size: 3rd instar 5 - 7.5mm

Drosophila suzukii (Matsumura, 1931)

China; Japan; Thailand; Hawaii, Korea

Drosophila biarmipes Malloch, 1924

India, se. Asia; Sri Lanka

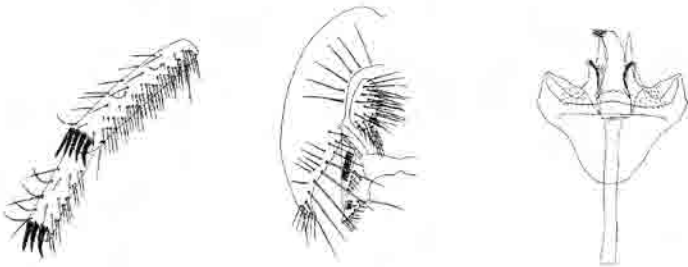
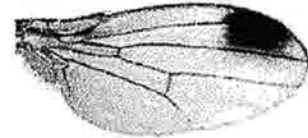
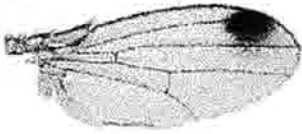
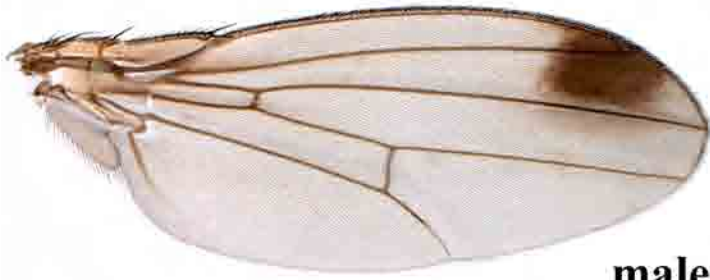


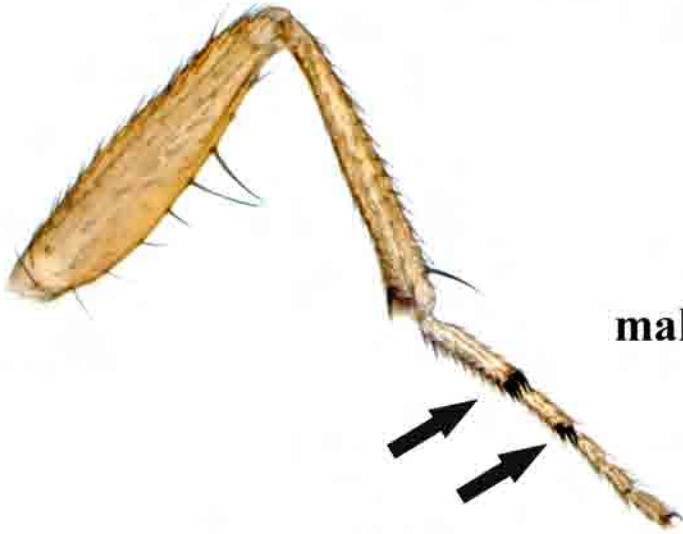
photo courtesy of N. Gompel

Drosophila suzukii (Matsumura, 1931)

Drosophila simulans Sturtevant, 1919



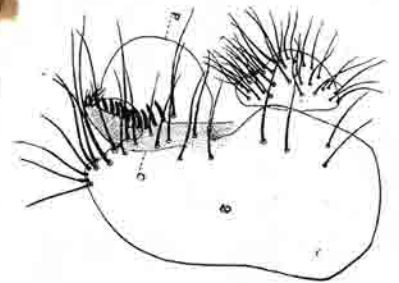
male wing



male fore leg



male genitalia



female ovipositor

