

DIAGNOSING LANDSCAPE & GARDEN PROBLEMS PART II

JANINE HASEY
UC FARM ADVISOR

April 7, 2011

SIGNS

**Actual Fungal Structures
Give Further Clue to Cause**

The background of the slide features a dense arrangement of green leaves and stems, rendered in a slightly darker shade of green than the overall background, creating a layered, naturalistic effect. The leaves are of various shapes and sizes, with prominent veins visible. The stems are thin and branch out across the frame.

POWDERY MILDEW

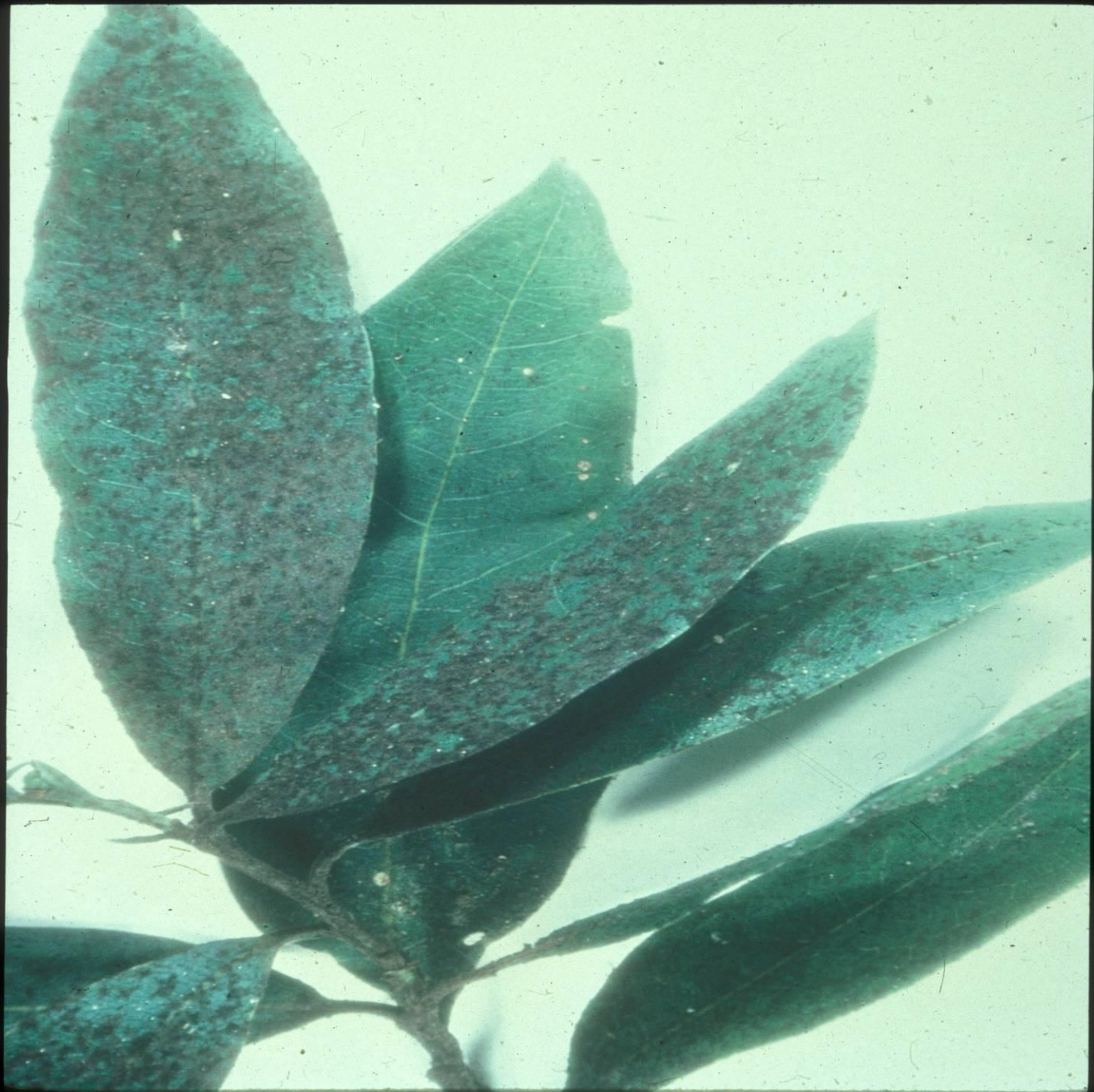








SOOTY MOLDS



The background of the slide is a dark green color with a pattern of lighter green, stylized leaf outlines. The leaves are arranged in a way that they appear to be part of a plant, with some leaves overlapping others. The overall effect is a textured, naturalistic background.

RUST

HOST-SPECIFIC





SIGN



SYMPTOM



ANTHRACNOSE

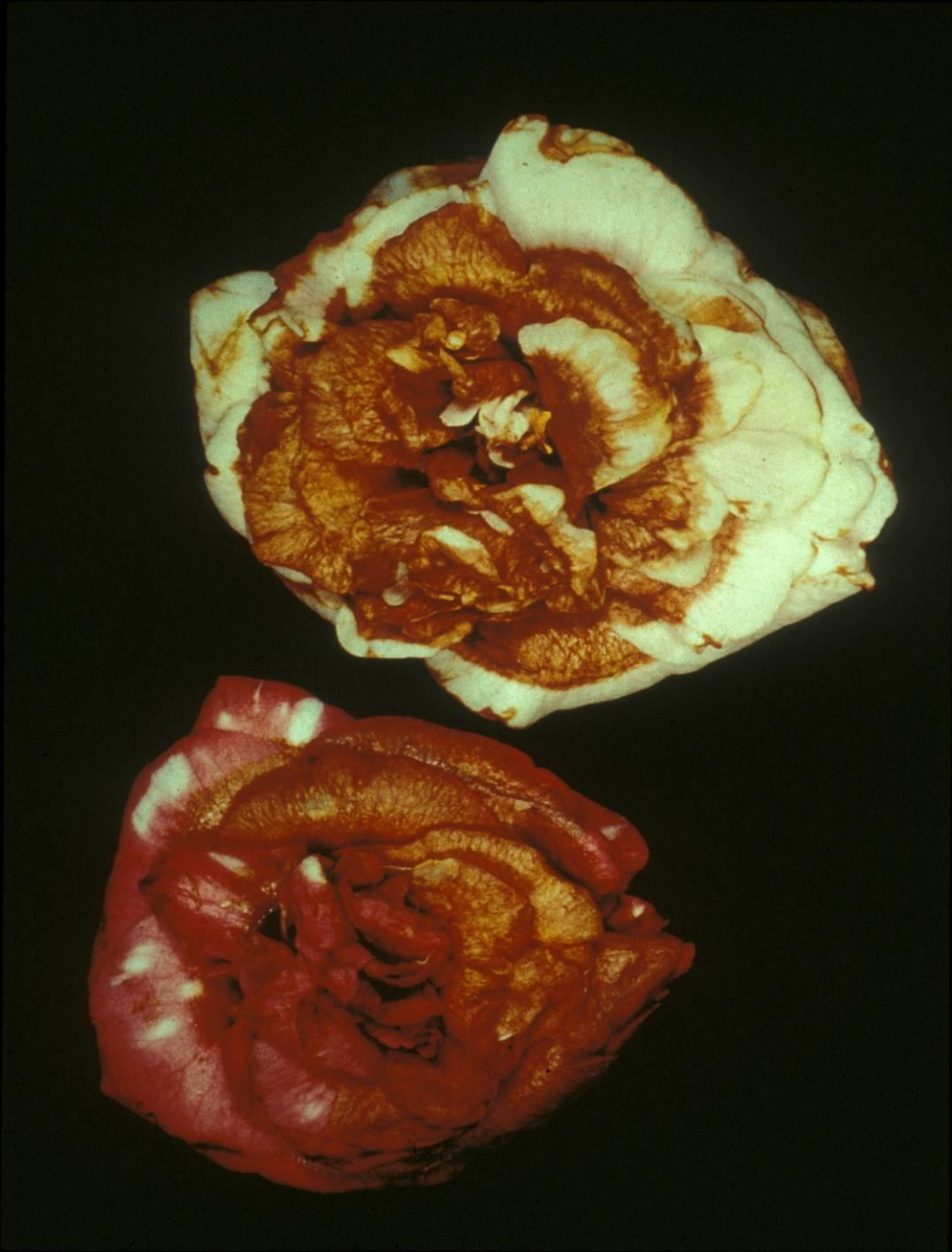
SYMPTOMS ONLY

SEVERAL FUNGI









The background of the slide is a dark green color with a pattern of lighter green, stylized leaf outlines. The leaves are scattered across the frame, creating a natural, botanical feel.

BROWN ROT

COMMON ON STONEFRUIT







VASCULAR WILTS

TWO MOST COMMON
FUSARIUM & VERTICILLIUM







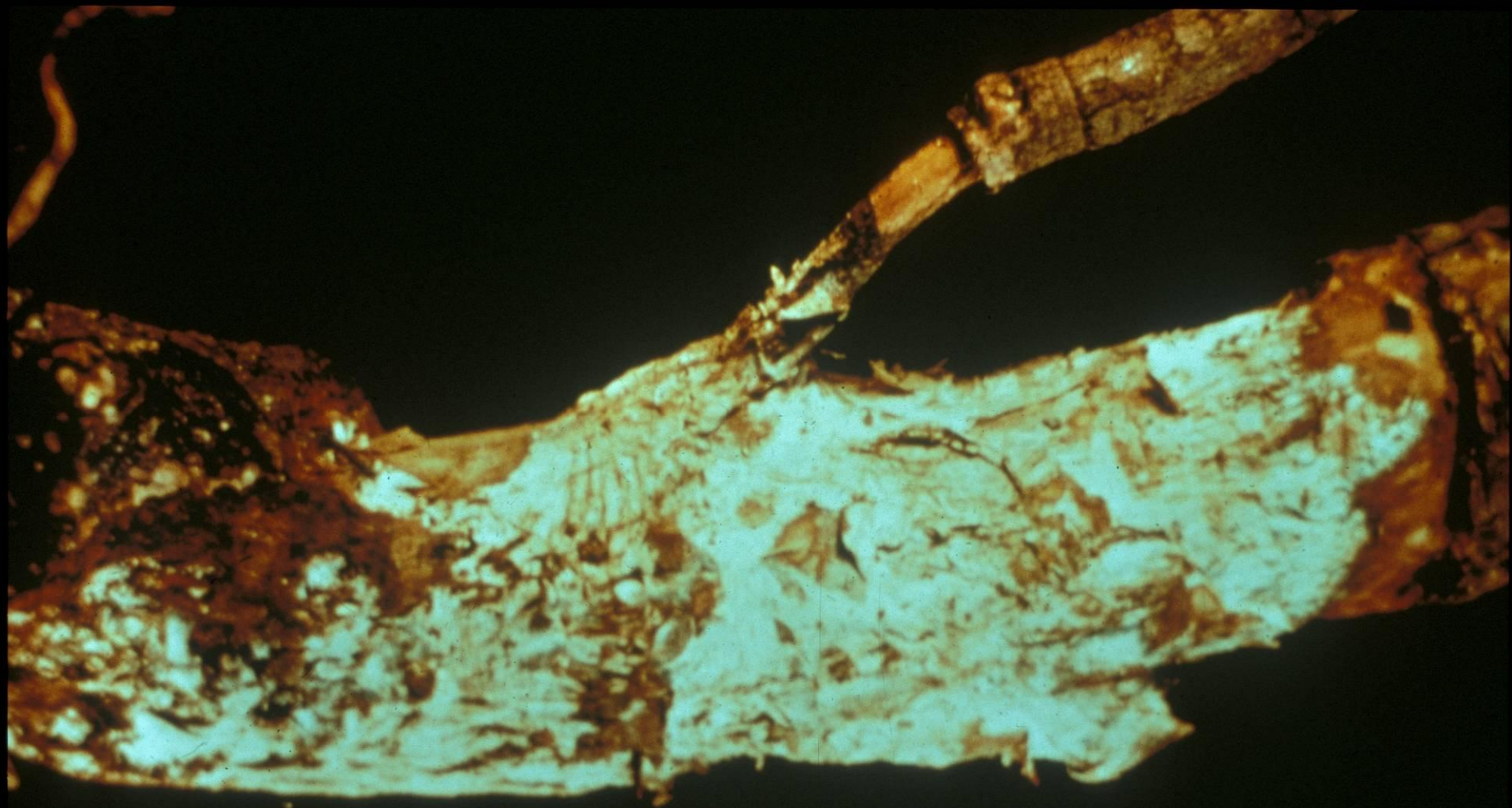
The background of the slide features a dense pattern of green leaves and branches, rendered in various shades of green to create a textured, naturalistic effect. The leaves are scattered across the frame, with some showing prominent veins. The overall color palette is monochromatic, ranging from light to dark green.

ROOT DISEASES

OAK ROOT FUNGUS

&

PHYTOPHTHORA











DIAGNOSING HOME GROUNDS INSECT PROBLEMS



CATEGORY I SYMPTOMS:

**Tattered foliage or other
chewed plant parts**









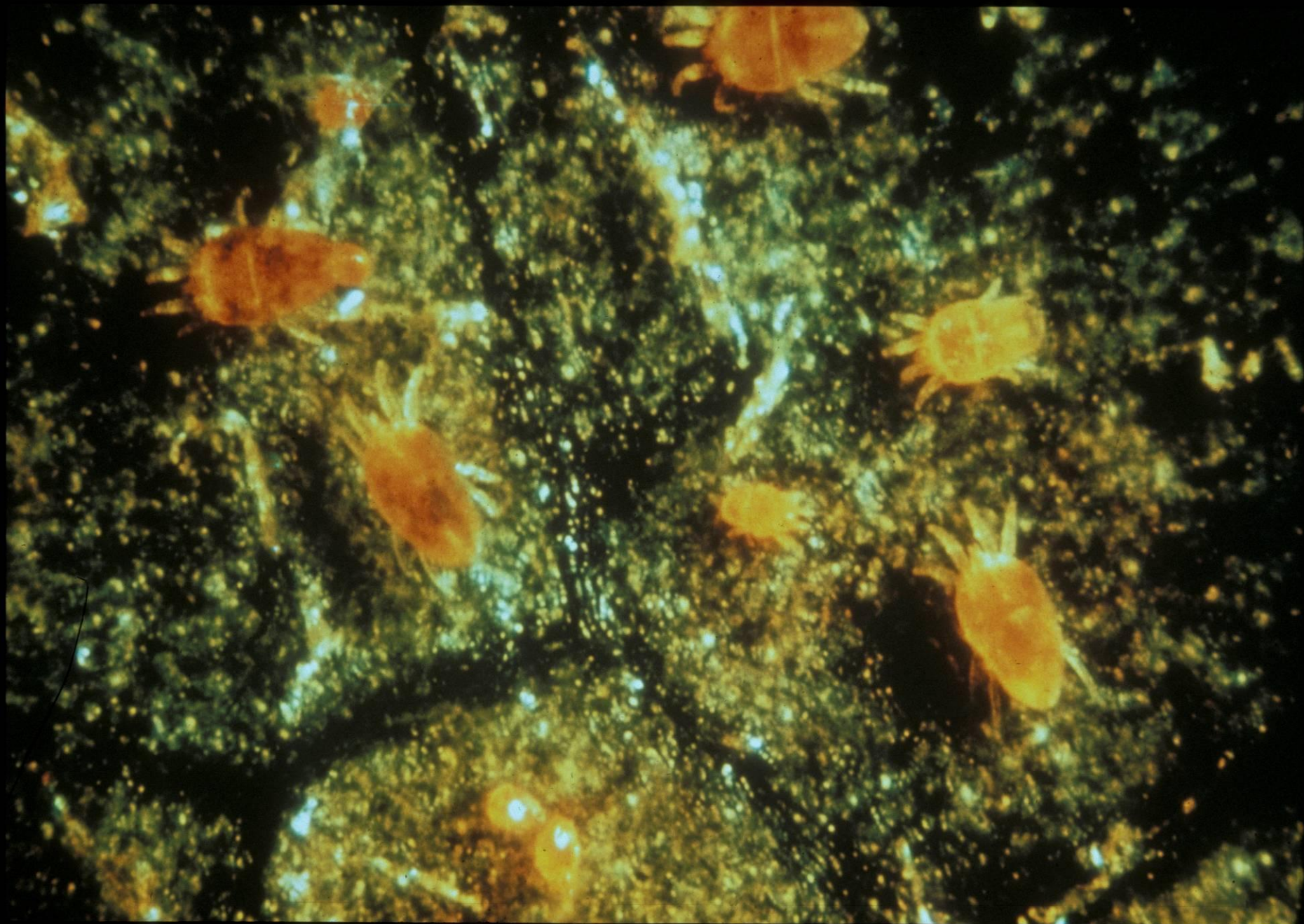






CATEGORY II SYMPTOMS:

**Bleached, bronzed or stippled
plant parts**















CATEGORY III SYMPTOMS:

Distortion of plant parts











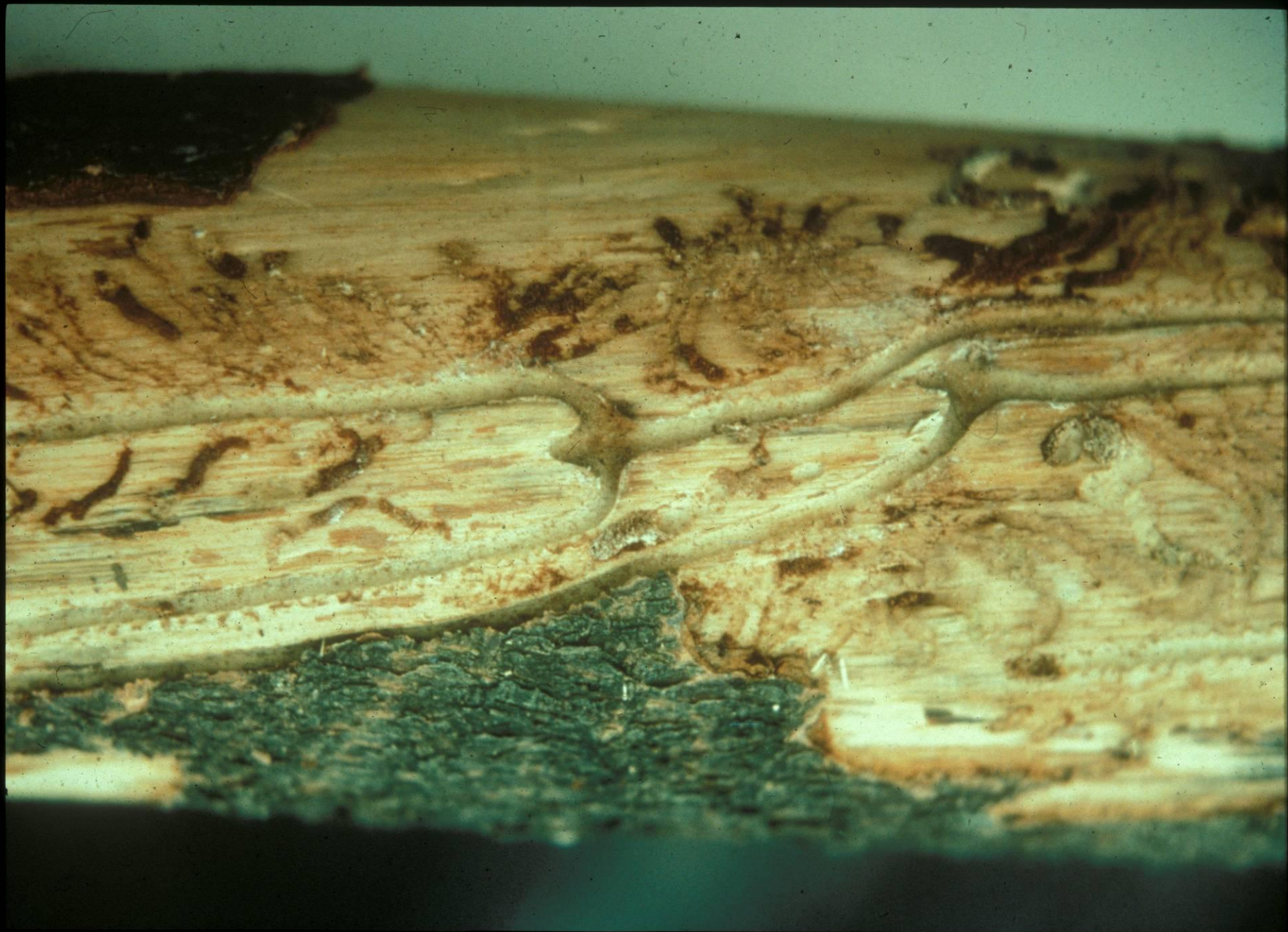


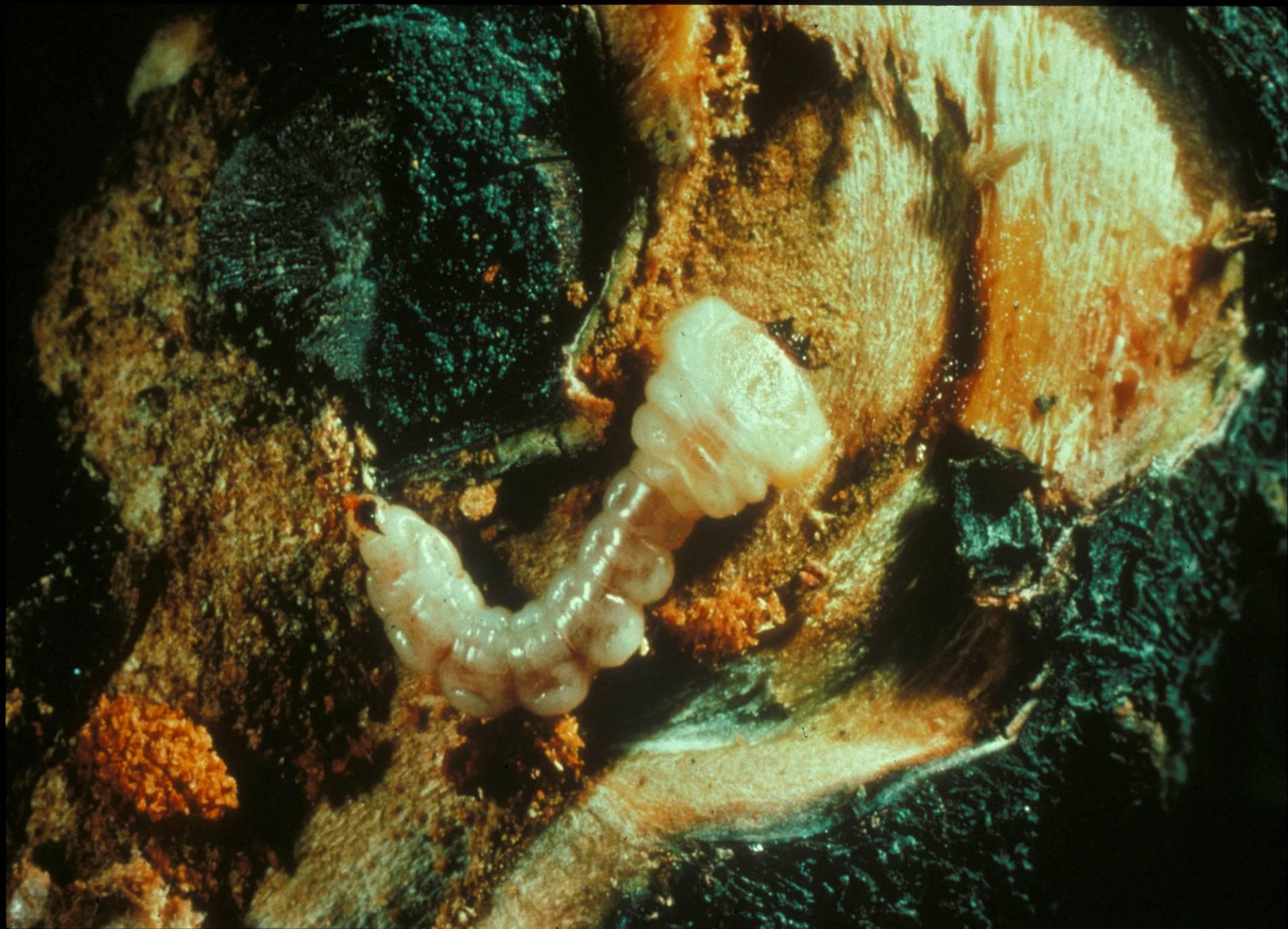


CATEGORY IV SYMPTOMS:

**Dieback of plant parts or
the entire plant**









CATEGORY V SYMPTOMS:

**Products made or left behind
by the offending pest**









**REMEMBER –
DON'T BLUFF YOUR WAY
OUT OF A QUESTION**

**SAY “I DON'T KNOW...
BUT I WILL FIND OUT & GET
BACK TO YOU”**

DIAGNOSIS OF PLANT PROBLEMS

- Insects & their relatives
- Plant diseases
- Nematodes
- Soil compaction
- Over/under watering
- Nutrient problems
- Toxins in soil
- Air pollutants

- Cold/heat
- Improper light
- Genetic disorders
- Pesticide Injury
- **There are many possible causes as to why a certain symptom is seen!**

REVIEW SYMPTOM SLIDES

- **What Do You Think The Cause Is & Why, Based On Symptom Type.**
- **For Diagnoses, Did You Consider That You Need To Know What The Normal Plant Looks Like?**



**FOR EXAMPLE, IF A CLIENT BROUGHT THESE INTO YOU,
WHAT WOULD BE YOUR FIRST REACTION?**