

California Department of Forestry and Fire Protection

Marysville Fire

August 16, 2006

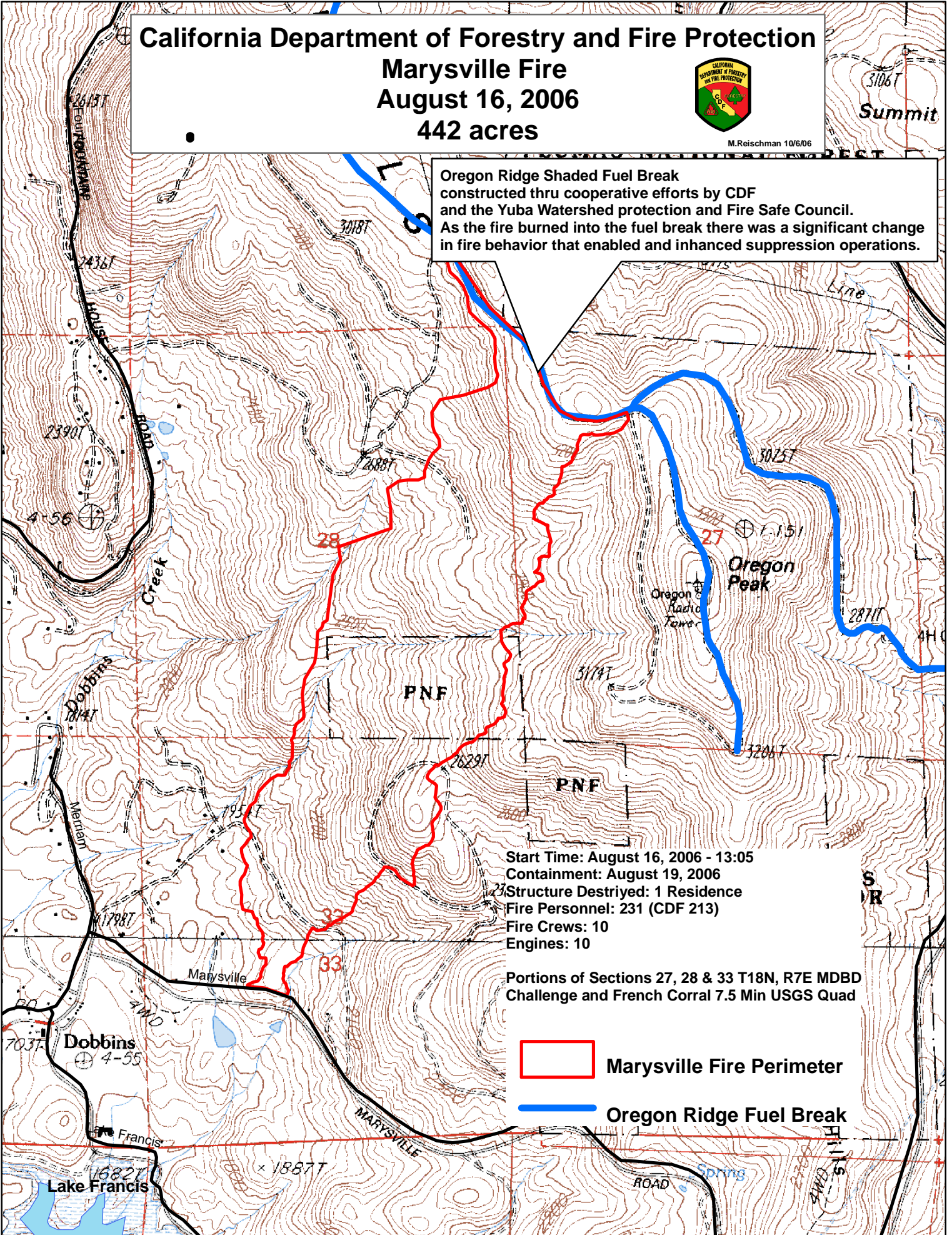
442 acres



M.Reischman 10/6/06



Summit

Oregon Ridge Shaded Fuel Break constructed thru cooperative efforts by CDF and the Yuba Watershed protection and Fire Safe Council. As the fire burned into the fuel break there was a significant change in fire behavior that enabled and inanced suppression operations.



Start Time: August 16, 2006 - 13:05
Containment: August 19, 2006
Structure Destroyed: 1 Residence
Fire Personnel: 231 (CDF 213)
Fire Crews: 10
Engines: 10

Portions of Sections 27, 28 & 33 T18N, R7E MDBD Challenge and French Corral 7.5 Min USGS Quad

-  Marysville Fire Perimeter
-  Oregon Ridge Fuel Break