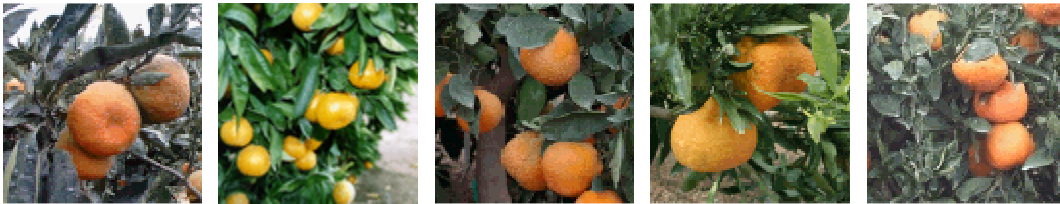


University of California Lindcove Satsuma Season 2 Hour Tastings

Lindcove Research and Extension Center is offering an opportunity for growers to observe the development of twenty varieties of Satsumas during this fall season. Lindcove will host four tastings of Satsumas beginning Friday September 26, 2008 from 11:00 A.M. to 1:00 P.M. at the Lindcove Main Office located at 22963 Carson Avenue in Exeter, California. (For more information: 559-592-2408)



Satsuma Mandarin Fruit Tasting Dates: Fridays from 11:00 A.M. to 1:00 P.M., September 26, October 10th, October 24th, and November 7th at LREC.

Satsuma mandarins in various stages of maturity will be displayed whole and sliced for tasting. The same varieties will be displayed each week to allow visitors to compare maturity characteristics such as color, flavor, and quality as the season progresses. At each tasting for the displayed varieties, we will provide a report of the current sugar acid ratio, rind thickness, and other fruit characteristics measured in the fruit quality laboratory.

Culminating the tasting event is a **walking tour of the LREC Demonstration Block on November 12 at 10 A.M.**, led by Tracy Kahn, Curator of UC Riverside Citrus Variety Collection. At this event, growers will be able to evaluate on-tree fruit characteristics and the growth of the trees and discuss the varieties.



Pictures Provided by CCPP