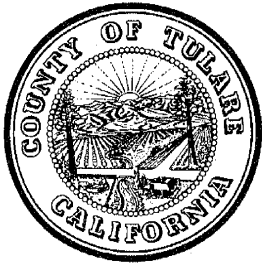


**2005**

**Tulare County  
Annual  
Crop and Livestock  
Report**





# Tulare County Agricultural Commissioner/Sealer

---

Gary Kunkel, Agricultural Commissioner  
Sealer of Weights and Measures  
William R. Appleby, Assistant  
Commissioner/Sealer

A. G. Kawamura, Secretary  
California Department of Food and Agriculture

April 2006

and

The Honorable Board of Supervisors  
County of Tulare

J. Steven Worthley, Chairman  
Allen Ishida

Phillip Cox  
Jim Maples

Connie Conway

Brain Haddix – County Administrative Officer

It is my pleasure to submit the 2005 Tulare County Annual Crop and Livestock Report. The report is produced in accordance with Sections 2272 and 2279 of the California Food and Agricultural Code and summarizes the acreage, production, and value of Tulare County's agricultural commodities. The figures contained herein represent gross returns to the producer and do not reflect actual net profit.

Tulare County's total gross production value for 2005 is **\$4,362,738,000**. This represents an increase of \$323,214,000 (eight percent) above 2004's value of \$4,039,524,000.

Milk was once again the leading commodity with a total gross value of \$1,476,011,000 .... an increase of 8% from last year. Milk and milk products represent 34% of the total crop and livestock value for 2005. Milk prices dropped in 2005 but an increase in the number of dairy cattle led to a 13% increase in production. The increase in the number of dairy cows, coupled with a higher price per head, resulted in an increased gross value for Cattle and Calves. This totaled \$514,017,000, an increase of 18%.

Fruit and Nut commodities had a total value of \$1,745,011,000, representing an increase of 10%. Higher gross values were seen in a variety of commodities including: Lemons, Navel Oranges, Pistachio Nuts, Pomegranates, Tangerines, and Walnuts. Field crops had a total gross value of \$404,130,000 for 2005, a decrease of 4% from the previous year. Yields trended downward this year but many prices were up, particularly those of forage crops used by the dairy industry. Vegetables experienced a 13% decrease in total acreage and 28% decrease in total gross value to \$26,942,000.

Tulare County's grand total for all commodities is the highest in its history. Tulare County's agricultural strength is based on the diversity of the crops produced. The 2005 report covers more than 140 different commodities. Forty six of these commodities have a gross value in excess of \$1,000,000. Although individual commodities may experience difficulties from year to year, Tulare County continues to produce high quality crops that provide food and fiber to more than 80 countries throughout the world.

I wish to express my sincere appreciation to the many producers, processors, and agencies, both private and public, which supported our efforts in producing this report. I would also like to thank all the members of my staff, particularly Melinda Lancaster and Dennis Haines. Without their hard work and valuable input, the publication of this report would have been impossible

Respectfully submitted,

Gary Kunkel  
Agricultural Commissioner/Sealer

## **Agricultural Commissioner/Sealer of Weights & Measures**

Gary W. Kunkel

### **Assistant Agricultural Commissioner/Sealer**

William R. Appleby

### **Deputy Agricultural Commissioner/Sealer**

Brian Cox Billy Deavours Marilyn Kinoshita

### **Systems and Procedures Analyst**

David Greenwood (Consultant)

### **Supervising Agricultural & Standards Inspectors**

Donald Borges David Case Rafael Garcia Jr. Jerry McElhaney

### **Agricultural Staff Biologist**

R. Dennis Haines

### **District Agricultural & Standards Inspectors**

Karrie Batchelor	Greg Dunbar	Kelly LeGrand	Gabriella Nunez	Curt Steggall
Dan Bigham	Chris Francone	Robert Mann	Jim Qualls	Paul Sihota
Steven Brown	David Gould	Robert Milner	Stoney Savage	Deo Tigulo
		John Moreno		

### **Agricultural & Standards Inspectors**

Dexter Bennett	Kristyna Cotta	Lovejot Gill	Ramphal Mann	Martin Munoz
David Bryant	Alejandro Del Rio	Luis Gomez	Hugh McLaurin	Sundip Rai
Marvin Clark	Rene Esquivel	Pedro Huerta Jr.	Craig Mills	Michelle Stanley
Scott Cornett	Guy Eubanks	Gavin Iacono	Robert Miranda	Ben Yosako
Albert Coronel	Roy Fontaine	Kurt Kilburn	Sabrina Moos	Rick Yraceburo
		Melinda Lancaster		

### **Extra Help Inspector Aides & Pest Detection Trappers**

Bennie Bibb	Diana Flowers	Joseph Lerda	Melissa Plum	Derek Taylor
Ronald Carter	Cordie Foster	Klay Mittel	Sharon Plum	Richard Vargas Jr
Wade DeCesare	Perfecto Hernandez	Leonard Ogans	Esiias Rodriguez	Andrew Wachner
Brian Dias	Michael Guzman	Nicole Pearson	Michael Spencer	Meynard Watts
Robert Fallert Jr.	Kerry Ladrigan	Eusebio Perez	Evan Sutherland	Jonathan Weir
		David Plum		

### **Staff Services Analyst II**

Brenda Plum

### **Senior Account Clerk**

Patricia McCurry

### **Office Assistant IV**

Gloria Schoenborn

### **Office Assistant III**

Diana Cisneros Anita Letsinger Jesusita Martinez Margie Renfro Ellen Stafford

### **Office Assistant - Extra Help**

Annette Castro

### **Tulare County Agricultural Offices**

TULARE	4437 South Laspina Street	(559) 685-3323
AG WAREHOUSE	1473 Ave 256, Visalia	(559) 733-6476
DINUBA (1)	324 West Tulare, Suite 102	(559) 591-5842
DINUBA (2)	324 West Tulare, Suite 102	(559) 591-5855
EXETER	101 West Pine Street	(559) 592-4075
LINDSAY	240 East Honolulu	(559) 562-6025
PIXLEY	188 South Main Street	(559) 757-3853
PORTERVILLE	25 South Hockett	(559) 782-4787
WOODLAKE	250 Antelope, Suite L	(559) 564-8320



## TABLE OF CONTENTS

COUNTY ACREAGE-PERMANENT PLANTINGS .....	1
FIELD CROPS .....	2-3
VEGETABLE CROPS .....	3
FRUIT AND NUT CROPS .....	4-6
NURSERY PRODUCTS .....	7
APIARY PRODUCTS .....	7
LIVESTOCK AND POULTRY .....	8
LIVESTOCK AND POULTRY PRODUCTS .....	8
SEED CROPS .....	9
INDUSTRIAL CROPS .....	9
SUMMARY .....	10
MILLION DOLLAR PRODUCTS .....	11
TWENTY YEAR VALUE COMPARISON .....	12
STANDARD CARTON WEIGHTS .....	13
PRODUCE EXPORT DATA .....	13-14
ANNUAL SUSTAINABLE AGRICULTURE .....	15-17

# TULARE COUNTY

## ACREAGE-PERMANENT PLANTINGS

	BEARING ACREAGE	NON-BEARING ACREAGE	TOTAL ACREAGE
<b><u>CITRUS</u></b>			
Grapefruit & Pummelos	1,326	256	1,582
Lemons	3,475	334	3,809
Navels	76,981	4,498	81,479
Valencias	22,834	93	22,927
Tangerines & Tangelos	4,915	3,393	8,308
Other Citrus <sup>a</sup>	2	5	7
<b>Total Citrus</b>	<b>109,533</b>	<b>8,579</b>	<b>118,112</b>
<b><u>DECIDUOUS &amp; GRAPES</u></b>			
Almonds	17,133	3,297	20,430
Apples	287	0	287
Apricots	421	75	496
Avocados	276	24	300
Cherries	1,642	619	2,261
Figs	18	3	21
Grapes			
Raisin	25,174	169	25,343
Table	29,444	760	30,204
Wine	10,417	415	10,832
Kiwifruit	2,026	181	2,207
Nectarines	13,271	1,144	14,415
Olives	14,616	164	14,780
Peaches			
Cling	1,339	78	1,417
Freestone	12,171	1,194	13,365
Pears & Asian Pears	357	12	369
Pecans	888	31	919
Persimmons	429	238	667
Pistachio Nuts	13,786	858	14,644
Plums	14,921	870	15,791
Pomegranates	1,898	82	1,980
Prunes - Dried Plums	4,999	343	5,342
Quince	207	25	232
Walnuts	30,670	1,098	31,768
Miscellaneous <sup>b</sup>	809	540	1,349
<b>TOTAL</b>			
Total Grapes	65,035	1,344	66,379
Total Orchard Crops	241,697	19,455	261,152
<b>GRAND TOTAL</b>	<b>306,732</b>	<b>20,799</b>	<b>327,531</b>

<sup>a</sup>Includes: Citron, Kumquat, and Lime

<sup>b</sup>Includes: Chestnuts, Guava/Feijoa, and Plumcots/Plucots/Pluots

## Field Crops

The total gross value of Field Crops dropped by 4% in 2005 and total acreage dropped by 1%. Over 80% of the crops had a decrease in yield. However that was closely balanced by 75% of field crops seeing increases in per unit price. Forage crops used by the dairy industry experienced higher prices resulting in increased values for Alfalfa, Corn, and Small Grain Silage. Cotton experienced a 21% decrease in harvested acres and a 37% decrease in total value.

Crop	Year	Harvested Acreage	Production		Value		
			Per Acre	Total	Unit	Per Unit	Total
Alfalfa - Hay	2005	101,800	9.00	916,000	Ton	152.00	139,232,000
	2004	101,900	9.17	934,000	Ton	138.00	128,892,000
Silage <sup>a</sup>	2005	X	2.38	161,000	Ton	31.50	5,072,000
	2004	X	3.00	136,000	Ton	28.00	3,808,000
Barley - Grain	2005	1,580	1.61	2,540	Ton	99.60	253,000
	2004	1,890	2.50	4,720	Ton	95.00	448,000
Beans - Dry	2005	2,340	1.30	3,040	Ton	708.00	2,152,000
	2004	3,890	1.67	6,500	Ton	520.00	3,380,000
Corn - Grain	2005	4,950	5.47	27,100	Ton	89.00	2,412,000
	2004	3,000	5.97	17,900	Ton	94.20	1,686,000
Silage	2005	147,300	25.60	3,771,000	Ton	26.60	100,309,000
	2004	136,500	27.50	3,754,000	Ton	24.90	93,475,000
Cotton - Lint <sup>b</sup>	2005	50,665	1,360.00	139,000	Bale	77.20	53,732,000
	2004	64,180	1,780.00	231,000	Bale	74.10	85,508,000
Seed	2005	X	X	48,900	Ton	185.00	9,047,000
	2004	X	X	79,200	Ton	160.00	12,672,000
Pasture & Range (Irrigated)	2005	110,000	X	X	Acre	130.00	14,300,000
	2004	110,000	X	X	Acre	130.00	14,300,000
Native	2005	615,000	X	X	Acre	12.00	7,380,000
	2004	615,000	X	X	Acre	20.00	12,300,000
Other	2005	81,700	X	X	Acre	20.00	1,634,000
	2004	84,130	X	X	Acre	33.00	2,776,000
Silage - Small Grain <sup>c</sup>	2005	95,200	17.10	1,628,000	Ton	24.30	39,560,000
	2004	95,820	16.00	1,533,000	Ton	19.00	29,127,000
Sorghum Grain	2005	6,240	2.66	16,600	Ton	90.00	1,494,000
	2004	5,140	2.00	10,300	Ton	82.00	845,000
Sudan Grass <sup>d</sup>	2005	9,890	16.00	158,000	Ton	18.50	2,923,000
	2004	10,780	30.00	323,000	Ton	18.00	5,814,000
Sugar Beets	2005	537	32.00	17,200	Ton	37.00	636,000
	2004	750	43.50	32,600	Ton	35.10	1,144,000
Wheat - Grain	2005	34,500	2.93	101,000	Ton	132.00	13,332,000
	2004	51,650	3.46	179,000	Ton	107.00	19,153,000

## Field Crops continued

Crop	Year	Production		Value			Total
		Harvested Acreage	Per Acre	Total	Unit	Per Unit	
Miscellaneous <sup>c</sup>	2005	31,800	X	X	X	X	10,662,000
	2004	24,300	X	X	X	X	5,373,000
TOTAL	2005	1,293,502					\$404,130,000
	2004	1,308,930					\$420,701,000

<sup>a</sup> Green weight basis.

<sup>b</sup> Yield per acre in pounds lint, production total in 495 lbs net weight bales, unit value in dollars per lint cwt.

<sup>c</sup> Includes: Barley, Oats, Sorghum, Wheat, and Winter Forage

<sup>d</sup> Sudan Grass reported as green chop in 2005.

<sup>e</sup> Includes: Bean Screenings & Straw, Oat Grain, Oat Hay, Rye, Sunflowers, and Straw.

## Vegetable Crops

Vegetables experienced a 13% decrease in harvested acreage in 2005. This resulted in a 28% decrease in total value. There was also a higher percentage of vegetables going to processing which receives a lower per unit price than if they were used as fresh market. Broccoli, Cucumbers, and Succulent Beans experienced an increase in acreage this year.

Crop	Year	Production		Value			Total
		Harvested Acreage	Per Acre	Total	Unit	Per Unit	
Broccoli - Processed	2005	2,180	5.15	11,200	Ton	440.00	4,928,000
	2004	1,760	3.35	5,900	Ton	562.00	3,316,000
Cucumbers	2005	611	10.60	6,480	Ton	685.00	4,439,000
	2004	537	10.60	5,690	Ton	690.00	3,926,000
Beans-Succulent	2005	492	4.90	2,410	Ton	813.00	1,959,000
	2004	261	4.81	1,260	Ton	1,340.00	1,688,000
Sweet Corn	2005	175	10.70	1,870	Ton	501.00	937,000
	2004	249	10.80	2,690	Ton	571.00	1,536,000
Miscellaneous <sup>a</sup>	2005	3,420	X	X	X	X	14,679,000
	2004 <sup>b</sup>	5,109	X	X	X	X	26,786,000
TOTAL	2005	6,878					\$26,942,000
	2004	7,916					\$37,252,000

<sup>a</sup> Includes: Artichokes, Arugula, Asparagus, Assorted Peppers, Basil, Bean - Lima, Beets, Brussel Sprouts, Cabbage, Carrots, Chives, Collards, Dill, Eggplant, Fennel, Garlic, Ginger, Gourds, Kale, Lavender, Leeks, Lettuce, Melon - Bitter, Melon - Cantaloupe, Melons - Honeydew, Melons Assorted, Mint, Mushrooms, Mustard, Okra, Onions, Oregano, Parsley, Peas, Potatoes, Pumpkins, Radishes, Rosemary, Sage, Spinach, Squash, Taragon, Thyme, Tomatillos, Tomatos (Fresh and Processed), Turnips, Watermelon, Yams, Zucchini.

<sup>b</sup> Revised to include Tomatoes-Fresh and Cauliflower.

## Fruit and Nut Crops

Total Fruit and Nut gross value increased by 10% in 2005. The increase in gross value was the result of increased price per ton for most fruits and nuts. Nut crops had decreased yield but that was countered by higher prices per ton. Pistachios nuts saw a 16% increase in acreage and a 50% increase in price per ton. Citrus crops experienced a 3% increase in bearing acreage as well as marginally higher per unit prices for the 2004-2005 season.

Crop	Year	Harvested Acreage	Per Acre	Production		Value	
				Total	Unit	Per Unit	Total
Almonds - Meats	2005	17,133	0.95	16,300	Ton	5,380.00	87,694,000
	2004	17,381	1.17	20,300	Ton	4,300.00	87,290,000
Hulls	2005	X	X	32,000	Ton	99.00	3,168,000
	2004	X	X	39,800	Ton	84.60	3,367,000
Apples	2005	287	8.78	2,520	Ton	347.00	874,000
	2004	394	9.00	3,550	Ton	700.00	2,485,000
Apricots	2005	421	4.46	1,880	Ton	1,050.00	1,974,000
	2004	559	4.98	2,780	Ton	650.00	1,807,000
Cherries	2005	1,642	1.76	2,890	Ton	6,090.00	17,600,000
	2004	1,664	2.32	3,860	Ton	3,000.00	11,580,000
Grapes - Total	2005	65,035	X	X	X	X	399,974,000
	2004	60,903	X	X	X	X	393,583,000
Raisin Varieties	2005	25,174	8.92	X	X	X	X
	2004	24,368	10.80	X	X	X	X
Canned	2005	X	X	23,200	Ton	262.00	6,078,000
	2004	X	X	22,000	Ton	265.00	5,830,000
Crushed <sup>a</sup>	2005	X	X	39,100	Ton	164.00	6,412,000
	2004	X	X	78,300	Ton	200.00	15,660,000
Dried <sup>b</sup>	2005	X	X	25,500	Ton	1,140.00	29,070,000
	2004	X	X	25,000	Ton	1,180.00	29,500,000
Fresh	2005	X	X	47,600	Ton	1,260.00	59,976,000
	2004	X	X	50,700	Ton	1,010.00	51,207,000
Table Varieties	2005	29,444	8.37	X	X	X	X
	2004	26,833	9.11	X	X	X	X
Crushed	2005	X	X	45,400	Ton	142.00	6,447,000
	2004	X	X	43,500	Ton	199.00	8,656,000
Fresh	2005	X	X	201,000	Ton	1,310.00	263,310,000
	2004	X	X	201,000	Ton	1,300.00	261,300,000
Wine Varieties	2005	10,417	10.70	X	X	X	X
	2004	9,702	8.83	X	X	X	X
Crushed	2005	X	X	108,000	Ton	242.00	26,136,000
	2004	X	X	83,200	Ton	235.00	19,552,000
Juice	2005	X	X	3,570	Ton	713.00	2,545,000
	2004	X	X	2,430	Ton	773.00	1,878,000



## Fruit and Nut Crops continued

Crop	Year	Harvested Acreage	Per Acre	Production		Value	
				Total	Unit	Per Unit	Total
Grapefruit - Fresh <sup>c</sup>	2005	1,326	11.60	15,400	Ton	653.00	10,056,000
	2004	1,547	12.30	19,000	Ton	508.00	9,652,000
Kiwifruit	2005	2,026	9.64	19,500	Ton	1,210.00	23,595,000
	2004	2,185	8.33	18,200	Ton	1,470.00	26,754,000
Lemons - Fresh	2005	3,475	15.00	41,700	Ton	824.00	34,361,000
	2004	3,496	13.10	38,100	Ton	760.00	28,956,000
Processed	2005	X	X	10,400	Ton	19.90	207,000
	2004	X	X	7,650	Ton	15.30	117,000
Nectarines - Fresh	2005	13,271	7.68	102,000	Ton	859.00	87,618,000
	2004	14,800	7.96	118,000	Ton	735.00	86,730,000
Olives	2005	14,616	3.83	56,000	Ton	584.00	32,704,000
	2004	15,620	3.66	57,200	Ton	636.00	36,379,000
Oranges - Navel	2005	76,981	12.70	831,000	Ton	537.00	446,247,000
	2004	75,026	12.80	787,000	Ton	526.00	413,962,000
Processed	2005	X	X	147,000	Ton	30.90	4,542,000
	2004	X	X	173,000	Ton	30.90	5,346,000
Oranges - Valencia	2005	22,834	14.70	262,000	Ton	486.00	127,332,000
	2004	23,886	12.20	227,000	Ton	543.00	123,261,000
Processed	2005	X	X	74,000	Ton	61.30	4,536,000
	2004	X	X	64,000	Ton	60.30	3,859,000
Peaches - Cling	2005	1,339	15.70	21,000	Ton	250.00	5,250,000
	2004	1,289	16.00	20,600	Ton	227.00	4,676,000
Peaches - Freestone	2005	12,171	10.70	72,400	Ton	833.00	60,309,000
	2004	12,095	10.20	79,500	Ton	721.00	57,320,000
Processed	2005	X	X	58,000	Ton	224.00	12,992,000
	2004	X	X	43,700	Ton	242.00	10,575,000
Pears & Asian Pears	2005	357	6.11	2,180	Ton	2,440.00	5,319,000
	2004	445	4.78	2,130	Ton	1,700.00	3,621,000
Pecans	2005	888	1.19	1060	Ton	3,800.00	4,028,000
	2004	830	1.12	930	Ton	2,400.00	2,232,000
Persimmons	2005	429	9.73	4,170	Ton	1,070.00	4,462,000
	2004	464	6.54	3,030	Ton	940.00	2,848,000
Pistachio Nuts	2005	13,786	1.49	20,500	Ton	4,740.00	97,170,000
	2004	11,896	1.80	21,400	Ton	3,000.00	64,200,000
Plums - Fresh	2005	14,921	7.80	116,000	Ton	824.00	95,584,000
	2004	17,077	6.95	119,000	Ton	834.00	99,246,000
Pomegranates	2005	1,898	5.58	10,600	Ton	1,150.00	12,190,000
	2004	1,253	5.76	7,220	Ton	934.00	6,743,000

## Fruit and Nut Crops continued

Crop	Year	Harvested Acreage	Per Acre	Production		Value	
				Total	Unit	Per Unit	Total
Prunes - Dried Plums <sup>d</sup>	2005	4,999	1.42	7,100	Ton	1,420.00	10,082,000
	2004	5,009	1.57	7,860	Ton	1,360.00	10,690,000
Quince	2005	207	4.63	958	Ton	1,710.00	1,638,000
	2004	237	5.93	1,410	Ton	1,320.00	1,861,000
Tangerines <sup>e</sup>	2005	4,915	8.41	41,300	Ton	956.00	39,483,000
	2004	2,653	7.95	21,100	Ton	644.00	14,010,000
Walnuts	2005	30,670	2.04	62,600	Ton	1,510.00	94,526,000
	2004	28,512	1.89	53,900	Ton	1,310.00	70,609,000
Miscellaneous <sup>f</sup>	2005	2,114	X	X	X	X	20,451,000
	2004	1,740	X	X	X	X	6,851,000
TOTAL	2005	307,741					\$1,745,966,000
	2004	300,961					\$1,590,610,000

<sup>a</sup> Includes green weight raisins for distillery materials and juice pack.

<sup>b</sup> A combined value reflecting free and reserve tonnage.

<sup>c</sup> Includes: Pummelos and Hybrids

<sup>d</sup> Yield is dry weight basis.

<sup>e</sup> Includes: Tangelos and Tangors.

<sup>f</sup> Includes: Avocado, Bushberries, Blueberries, Citron, Chestnuts, Figs, Guava/Feijoa, Plumcots, Pluots, Processed Grapefruit, Processed Tangerines, Strawberries, and Kumquat.



## Nursery Products

The Tulare County nursery industry saw substantial growth in 2005. This resulted in an 18% increase in total gross value to \$82,260,000. The increase in value was led by Grape and Berry Vines and Ornamental Trees & Shrubs. The quantity of all nursery commodities sold increased by 16% from 2004.

Crop	Year	Production		Value	
		Quantity Sold	Unit	Per Unit	Total
Citrus & Subtropical Trees	2005	739,000	Each	8.60	6,355,000
	2004	739,000	Each	9.12	6,740,000
Deciduous Fruit & Nut Trees	2005	654,000	Each	7.40	4,840,000
	2004	603,000	Each	7.98	4,812,000
Grape & Berry Vines	2005	6,045,000	Each	1.93	11,667,000
	2004	5,630,000	Each	1.40	7,882,000
Foliage Plants & Cut Flowers	2005	X	X	X	625,000
	2004	X	X	X	961,000
Ornamental Trees & Shrubs	2005	6,148,000	Each	9.08	55,824,000
	2004	4,480,000	Each	10.94	45,248,000
Miscellaneous*	2005	X	X	X	2,949,000
	2004	X	X	X	3,780,000
TOTAL	2005				\$82,260,000
	2004				\$69,423,000

\* Includes: Aquatics, Citrus (Buds, Cuttings & Scions), Christmas Trees, Ground Cover, Irises, Landscape Olive Trees, Palm Trees, Turf, and Vegetable & Flower Plants in flats.

## Apiary Products

Apiary products saw a decrease in total gross value for the second year in a row. Honey production was up by 19% this year but prices fell by 24% for orange honey and 20% for other honey. Prices per colony for pollination was also up, but fewer colonies were used per acre in 2005, resulting in a decrease in total value for pollination.

Crop	Year	Production		Value	
		Total	Unit	Per Unit	Total
Honey - Orange <sup>a</sup>	2005	19,240,000	Pound	0.87	16,739,000
	2004	16,754,000	Pound	1.14	19,100,000
Other	2005	2,529,000	Pound	.66	1,669,000
	2004	1,529,000	Pound	.85	1,300,000
Beeswax	2005	100,000	Pound	2.08	208,000
	2004	125,000	Pound	1.26	158,000
Pollination <sup>b</sup>	2005	120,000	Colony	56.70	6,804,000
	2004	151,000	Colony	49.70	7,505,000
TOTAL	2005				\$25,420,000
	2004				\$28,063,000

<sup>a</sup> From bee colonies registered in Tulare County during the 2005 citrus bloom period.

<sup>b</sup> Estimated number of colonies required for adequate pollination.

## Livestock & Poultry

Livestock and Poultry experienced an increase of 15% in total gross value. The increase was led by Cattle and Calves which saw an increase of 18% . This was a result of an increase in the population of dairy cows as well as an 11% increase in price per head for Cattle and Calves.

Crop	Year	No. of Head	Total Liveweight	Unit	Value	
					Per Unit	Total
Cattle & Calves	2005	597,000	X	Head	861.00	514,017,000
	2004	572,000	X	Head	763.00	436,436,000
Lambs	2005	16,100	1,530,000	Pound	0.99	1,515,000
	2004	13,900	1,325,000	Pound	0.90	1,192,000
Hogs & Pigs	2005	209,000	X	Head	122.00	25,498,000
	2004	239,000	X	Head	113.30	27,007,000
Turkeys	2005	711,000	21,721,000	Pound	0.37	8,037,000
	2004	673,000	17,506,000	Pound	0.39	6,827,000
Miscellaneous*	2005	X	X	X	X	34,390,000
	2004	X	X	X	X	37,521,000
TOTAL	2005					\$583,457,000
	2004					\$508,983,000

\* Includes: Aquaculture, Beneficial Organisms, Chickens, Escargot, Fish Bait, Game Birds, Goats, Pet Food, Pigeons, Pullets, Rabbits, Sheep, and Turkey Breeders.

## Livestock & Poultry Products

Milk continues to be a billion dollar commodity in Tulare County and Represents one third of the county's total crop and livestock gross value. Although the price per cwt. fell by about 5% in 2005, milk production was up by 13%. Seven times more milk went to manufacturing in 2005 than 2004, receiving higher prices per cwt. than market milk.

Crop	Year	Production	Unit	Value	
				Per Unit	Total
Manure <sup>a</sup>	2005	2,505,000	Ton	1.10	2,756,000
	2004	2,472,000	Ton	1.09	2,694,000
Milk - Market	2005	96,327,000	Cwt.	13.82	1,331,239,000
	2004	92,299,000	Cwt.	14.58	1,345,719,000
Manufacturing	2005	10,005,000	Cwt.	14.47	144,772,000
	2004	1,409,000	Cwt.	15.20	21,417,000
Miscellaneous <sup>b</sup>	2005	X	X	X	11,230,000
	2004	X	X	X	9,136,000
TOTAL	2005				\$1,489,997,000
	2004				\$1,378,966,000

<sup>a</sup> Includes: Dairy and Poultry Manure.

<sup>b</sup> Includes: Turkey Hatching Eggs, Chicken Eggs (Market & Hatching), Goat Milk, and Wool.

## Seed Crops

Cotton seed acreage saw a 56% decrease in 2005, while miscellaneous acreage doubled from the 2004 season. The total gross value fell by 36% to \$ 1,497,000.

Crop	Year	Harvested Acreage	Per Acre	Production		Value	
				Total	Unit	Per Unit	Total
Cotton - Registered or Certified <sup>a</sup>	2005	3,780	X	3,650	Ton	245.00	894,000
	2004	8,600	X	8,600	Ton	225.00	1,935,000
Miscellaneous <sup>c</sup>	2005	422	X	X	X	X	603,000
	2004	210	X	X	X	X	420,000
TOTAL	2005	422					\$1,497,000
	2004	210					\$2,355,000

<sup>a</sup> Not included in total acreage for "Seed Crops."

<sup>c</sup> Includes: Blackeye Cowpeas, Garbanzos, Corn, and Wheat

## Industrial Crops

Industrial crops total gross value for 2005 was \$3,069,000, a decrease of 3%. Total board feet of timber was down 34% but Miscellaneous crops were up 19% due to walnut wood being sold, as more trees are removed for development.

Crop	Year	Production		Value	
		Total	Unit	Per Unit	Total
Timber harvested <sup>a</sup>	2005	10,703,000	Board Ft.	0.176	1,884,000
	2004	16,339,000	Board Ft.	0.133	2,173,000
Miscellaneous <sup>b</sup>	2005	X	X	X	1,185,000
	2004	X	X	X	998,000
TOTAL	2005				\$3,069,000
	2004				\$3,171,000

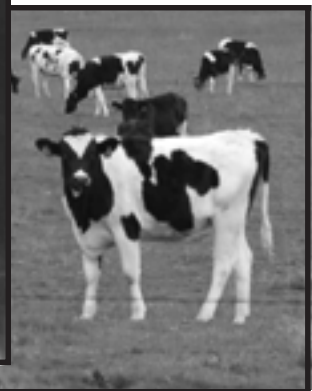
<sup>a</sup> Previous year's production & value based on information provided by Timber Tax Division, Property Taxes Dept., State Board of Equalization.

<sup>b</sup> Includes: Almond Shells, Biomass, Fire Wood, and Walnut Stumps.



## SUMMARY

COMMODITY	YEAR	HARVESTED ACREAGE	VALUE
FIELD CROPS	2005	1,293,502	\$404,130,000
	2004	1,308,930	\$420,701,000
VEGETABLE CROPS	2005	6,878	\$26,942,000
	2004	7,916	\$37,252,000
FRUIT & NUT CROPS	2005	307,741	\$1,745,966,000
	2004	300,961	\$1,590,610,000
NURSERY PRODUCTS	2005	X	\$82,260,000
	2004	X	\$69,423,000
APIARY PRODUCTS	2005	X	\$25,420,000
	2004	X	\$28,063,000
LIVESTOCK & POULTRY	2005	X	\$583,457,000
	2004	X	\$508,983,000
LIVESTOCK & POULTRY PRODUCTS	2005	X	\$1,489,997,000
	2004	X	\$1,378,966,000
SEED CROPS	2005	422	\$1,497,000
	2004	210	\$2,355,000
INDUSTRIAL CROPS	2005	X	\$3,069,000
	2004	X	\$3,171,000
GRAND TOTAL	2005	1,608,543	\$4,362,738,000
	2004	1,618,017	\$4,039,524,000



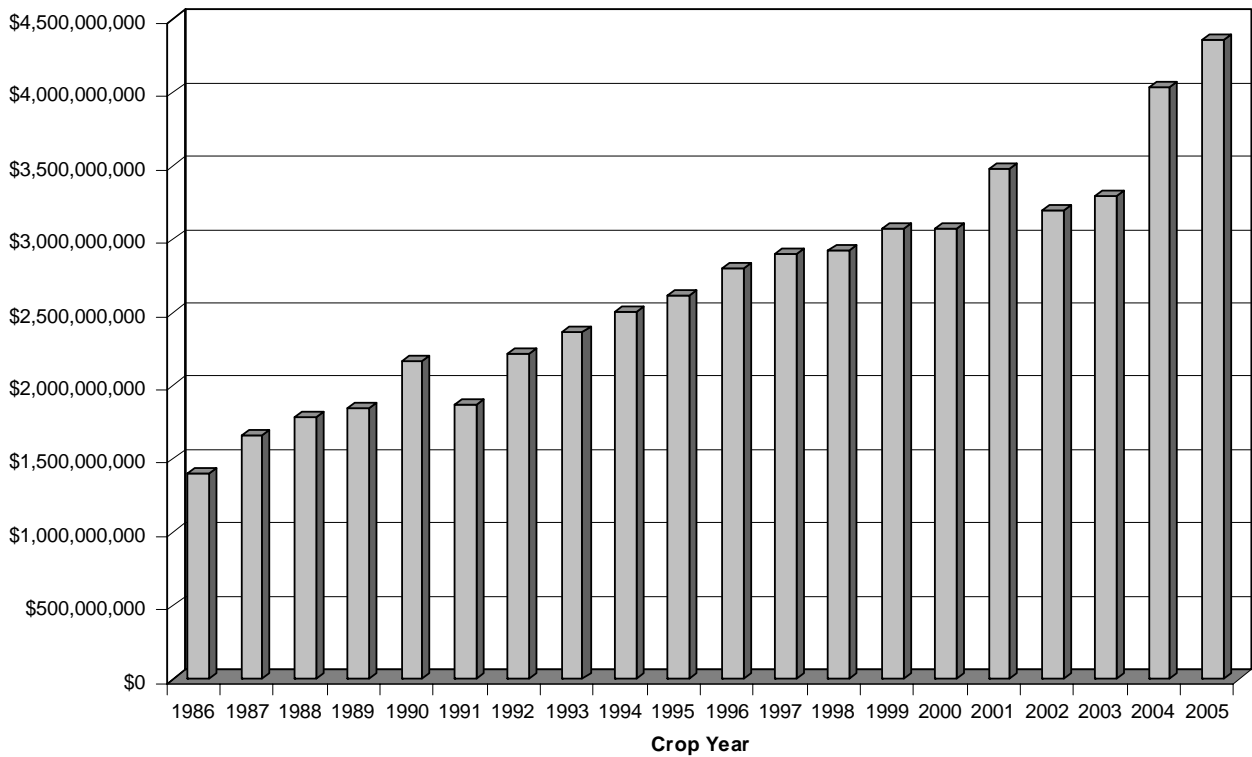
# MILLION DOLLAR PRODUCTS

2005 Ranking	2005 Total Value	2004 Ranking
1 Milk	\$1,476,011,000	1
2 Oranges - Navel & Valencia	\$582,657,000	2
3 Cattle & Calves	\$514,017,000	3
4 Grapes	\$399,974,000	4
5 Alfalfa - Hay & Silage	\$144,304,000	5
6 Corn - Grain & Silage	\$102,721,000	8
7 Pistachio Nuts	\$97,170,000	13
8 Plums	\$95,584,000	7
9 Walnuts	\$94,526,000	12
10 Almonds - Meats & Hulls	\$90,862,000	9
11 Nectarines	\$87,618,000	10
12 Peaches - Cling & Freestone	\$75,551,000	11
13 Cotton - Lint & Seed	\$63,673,000	6
14 Nursery - Ornamental Trees & Shrubs	\$55,824,000	14
15 Silage - Small Grains	\$39,560,000	17
16 Tangerines	\$39,483,000	23
17 Lemons	\$34,568,000	18
18 Olives	\$32,704,000	15
19 Hogs & Pigs	\$25,498,000	19
20 Kiwifruit	\$23,595,000	20
21 Pasture & Range	\$23,314,000	16
22 Honey	\$18,408,000	21
23 Cherries	\$17,600,000	24
24 Wheat - Grain	\$13,332,000	22
25 Pomegranates	\$12,190,000	30
26 Nursery - Grape & Berry Vines	\$11,667,000	27
27 Prunes	\$10,082,000	25
28 Grapefruit	\$10,056,000	26
29 Turkeys	\$8,037,000	29
30 Pollination	\$6,804,000	28
31 Nursery - Citrus & Subtropical Trees	\$6,355,000	31
32 Pears & Asian Pears	\$5,319,000	36
33 Broccoli	\$4,928,000	38
34 Nursery - Deciduous Fruit & Nut Trees	\$4,840,000	34
35 Persimmons	\$4,462,000	39
36 Cucumbers	\$4,439,000	35
37 Pecans	\$4,028,000	42
38 Sudan Grass	\$2,923,000	32
39 Manure	\$2,756,000	40
40 Beans Dry	\$2,152,000	37
41 Apricots	\$1,974,000	44
42 Beans- Succulent	\$1,959,000	45
43 Timber	\$1,884,000	-
44 Quince	\$1,638,000	43
45 Lambs	\$1,515,000	47
46 Sorghum Grain	\$1,494,000	-

**TWENTY YEAR COMPARISON OF AGRICULTURE  
INCOME IN TULARE COUNTY  
1986-2005**

1986	1,400,743,000	1996	2,805,452,000
1987	1,667,201,000	1997	2,900,892,000
1988	1,791,151,200	1998	2,919,528,800
1989	1,853,151,600	1999	3,078,369,000
1990	2,169,448,000	2000	3,068,648,200
1991	1,878,425,000	2001	3,475,999,600
1992	2,224,612,000	2002	3,201,084,900
1993	2,365,202,000	2003	3,296,522,000
1994	2,504,944,000	2004	4,039,524,000
1995	2,611,088,000	2005	4,362,738,000

**Tulare County 20 Year Comparison**

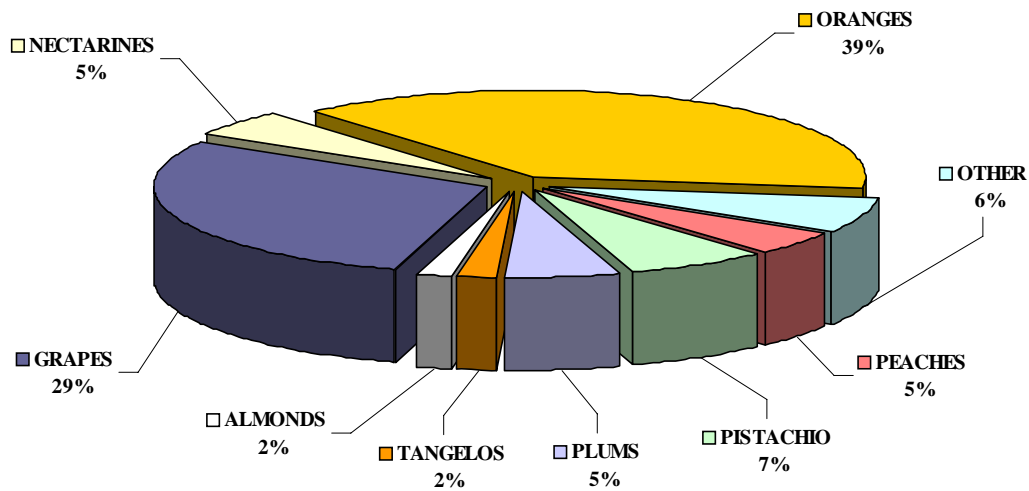




## STANDARD CARTON WEIGHTS (LBS) FOR FRESH MARKET COMMODITIES

Almonds .....	5	Lemons .....	40
Apples .....	40	Nectarines .....	25
Apricots .....	24	Oranges .....	37½
Avocados .....	25	Peaches - Freestone .....	25
Beans, Snap .....	30	Pears, Asian Pears .....	11
Broccoli .....	23	Persimmons .....	11
Cauliflower .....	25	Pistachios (roasted) .....	25
Cherries .....	18	Plums .....	28
Corn, Sweet .....	50	Pomegranates .....	28
Figs .....	8	Prunes, Fresh .....	28
Grapefruit .....	36	Quince .....	22
Grapes, Juice .....	36	Squash .....	25
Grapes, Table .....	21	Tangerines .....	25
Honeydew Melons .....	30	Tomatoes .....	25
Kiwifruit .....	7½		

## 2005 FRUIT & NUT EXPORT COMMODITIES



### 2005 Leading 75 Export Countries

Rank	Country	Cartons	Rank	Country	Cartons	Rank	Country	Cartons
1	Republic of Korea	5,443,638	26	Dominican Republic	144,260	51	Portugal	11,240
2	Japan	4,359,109	27	Columbia	131,441	52	Lebanon	10,024
3	Mexico	3,796,905	28	Venezuela	123,268	53	Turkey	9,850
4	Taiwan	3,395,573	29	Vietnam	114,357	54	Saudi Arabia	9,560
5	Peoples Republic of China	2,314,149	30	Ecuador	106,435	55	Cyprus	9,534
6	New Zealand	585,299	31	Italy	74,417	56	Cambodia	8,163
7	British Colombia	585,289	32	India	70,088	57	Poland	8,020
8	Indonesia	553,824	33	Belgium	59,388	58	Romania	6,758
9	Philippines	486,954	34	United Arab Emerits	50,924	59	French Polynesia	6,265
10	Netherlands	486,672	35	Russian Federation	49,435	60	Latvia	6,161
11	Australia	473,119	36	Bahamas	37,799	61	Peru	4,743
12	Guatemala	433,703	37	Chile	36,980	62	Fiji	4,736
13	Canada	380,065	38	Brazil	36,052	63	Algeria	4,400
14	Luxembourg	339,680	39	South Africa	32,953	64	Sweden	3,620
15	El Salvador	261,685	40	Israel	30,721	65	Republic of Armenia	3,528
16	France	230,639	41	Singapore	29,813	66	New Caledonia	3,446
17	Thailand	219,652	42	Nicaragua	27,173	67	Ukraine	3,395
18	Costa Rica	200,498	43	Czechoslovakia	21,699	68	Denmark	3,360
19	United Kingdom	183,053	44	Trinidad and Tobago	21,225	69	Guadeloupe	3,102
20	Greece	174,510	45	Switzerland	19,463	70	Jordan	2,620
21	Panama	170,131	46	Malaysia	19,325	71	Ireland	2,464
22	Germany	167,890	47	Norway	18,480	72	Argentina	2,344
23	Hong Kong	166,379	48	Bangladesh	17,272	73	Jamaica	2,342
24	Honduras	158,555	49	Mauritius	12,898	74	Egypt	1,711
25	Spain	152,849	50	Sri Lanka	12,124	75	Moldavia	1,608

# Tulare County Sustainable Agricultural Reporting - 2005

## County Biological Control

Pest	Agent/Mechanism	Program Scope
Aphids <i>Aphis</i> spp.	Asian Ladybird Beetle <i>Harmonia axyridis</i>	2 sites
Ash Whitefly <i>Siphoninus phillyreae</i>	Parasitic Wasp <i>Encarsia inaron</i>	Upon demand
	Ladybird Beetle <i>Cleitostethus arcuatus</i>	Upon demand
Bull Thistle <i>Cirsium vulgare</i>	Seedhead Gall Fly <i>Urophora stylata</i>	2 sites
Comstock Mealybug <i>Pseudococcus comstocki</i>	Parasitic Wasps <i>Pseudoaphycus malinus</i> <i>Allotropa burrelli</i>	Upon demand
Cottony-Cushion Scale <i>Icerya purchasi</i>	Parasitic Fly <i>Cryptochetum iceryae</i>	Upon demand
	Vedalia Beetle <i>Rodolia cardinalis</i>	1 sites
Italian Thistle <i>Carduus pycnocephalus</i>	Seedhead Weevil <i>Rhinocylus conicus</i>	2 sites
Milk Thistle <i>Silybum marianum</i>	Seedhead Weevil <i>Rhinocylus conicus</i>	Upon demand
Mulberry Whitefly <i>Tetraleurodes mori</i>	Ladybird Beetle <i>Delphastus dejavu</i>	Upon demand
Puncture Vine <i>Tribulus terrestris</i>	Seed & Stem Weevils * <i>Microlarinus lareynii</i> <i>Microlarinus lypriformis</i>	Upon demand
Russian Thistle <i>Salsola australis</i>	Casebearer Moth <i>Coleophora klimeschiella</i>	Upon demand
Silverleaf Whitefly <i>Bemesia argentifolia</i>	Parasitic Wasps <i>Eretmocerus</i> spp.	1 site
Yellow Star Thistle <i>Centaurea solstitialis</i>	Flowerhead Bud Weevil <i>Bangasternus orientalis</i>	Upon demand
	Flower Weevil <i>Larinus curtus</i>	2 sites
	Hairy Weevil * <i>Eustenopus villosus</i>	1 site
	Peacock Fly <i>Chaetorellia succinea</i>	Upon demand
	Yellow Star Gall Fly <i>Urophora sirunaseva</i>	Upon demand

\*Also provided insect agents to other out-of-county agencies.

## County Pest Detection

Target Pest	Number of Traps	Host Crops
European Corn Borer	10	Corn/Sorghum
European Pine Shoot Moth	10	Pines
Glassy-winged Sharpshooter	6,624	Various Trees & Shrubs
Gypsy Moth	200	Shade Trees
Japanese Beetle	135	Turf & Flowers
Khapra Beetle	54	Stored Food Products
Mediterranean Fruit Fly	525	Fruit Trees
Melon Fruit Fly	180	Vegetables
Mexican/Caribbean Fruit Flies	249	Fruit Trees
Oriental Fruit Fly	180	Fruit Trees

## County Pest Eradication Pest

Pest	Agent/Mechanism	Program Scope
Alligatorweed <i>Alternanthera philoxeroides</i>	Mechanical/Chemical Control	107 Plants
Pink Bollworm <i>Pectinophora gossypiella</i>	Mechanical/Host Free Period	50,665 Acres
Scotch Thistle <i>Onopordum acanthium</i>	Mechanical/Chemical Control	General Distribution

## 2005 Registered Organic and Certified Producer Farming Statistics

Organic Growers	50
Acres of Organic Cropland	2,922
Organic Packers/Shippers	10
Certified Producers Certificates	120

## Organic Crops

Grapes	1,021 Acres
Citrus	903 Acres
Tree Fruits	380 Acres
Nuts	257 Acres
Avocados	62 Acres
Vegetables/Melons	38 Acres
Kiwi	29 Acres
Olives	29 Acres
Apples/Pears	11 Acres
Other	10 Acres
Dairy Cows	1,080 Head

**County Pest Exclusion  
Pest Rejections**

	<b>Setting</b>	<b>Program Scope</b>
Burrowing Nematode <i>Radophilus similis</i>	Incoming Shipments	3 rejections/destroyed
Cereal Leaf Beetle <i>Oulema melanopus</i>	Incoming Shipment	1 rejection/destroyed
Live Pests (unspecified)	Incoming Shipments	7 rejections/destroyed
Oak Wilt Disease <i>Ceratocystis fagacearum</i>	Incoming Shipment	1 rejection/destroyed
Markings	Incoming Shipments	33 rejections/destroyed or released
Federally Prohibited Plant Material	Incoming Shipments	5 rejections/destroyed
Federally Prohibited Animal Products	Incoming Shipments	3 rejections/destroyed





Tulare County  
Agricultural Commissioner/Sealer  
4437 South Laspina Street  
Tulare, CA 93274

PRESORTED  
FIRST CLASS  
U.S. POSTAGE  
**PAID**  
VISALIA, CA  
PERMIT #142