

Costs to Establish and Produce Cherries



Joe Grant, San Joaquin County

Janet Caprile, Contra Costa County

William Coates, San Benito County

Karen Klonsky, UC Davis

Rich De Moura, UC Davis

<http://coststudies.ucdavis.edu>

Cherry Orchard Assumptions



- San Joaquin Valley, 2005
- 'Bing' variety, no specific rootstock
- 18' X 18' spacing, 134 trees per acre
- 40 contiguous acres
- 25 year orchard life
- Micro-sprinkler irrigation
- 75% Pack-out

Costs of Production



- Cultural Costs
- Harvest Costs
- Cash Overhead
- Noncash Overhead

Production Costs

- **Cultural Costs**

- Harvest Costs

- Cash Overhead

- Noncash Overhead

- Pruning

- Floor management

- Disease and pest control

- Irrigation and fertilization

- ATV and pickup use

Production Costs



- Cultural Costs
- **Harvest Costs**
 - Hand Harvest – Contract
 - Haul to Processor
- Cash Overhead
- Noncash Overhead

Production Costs

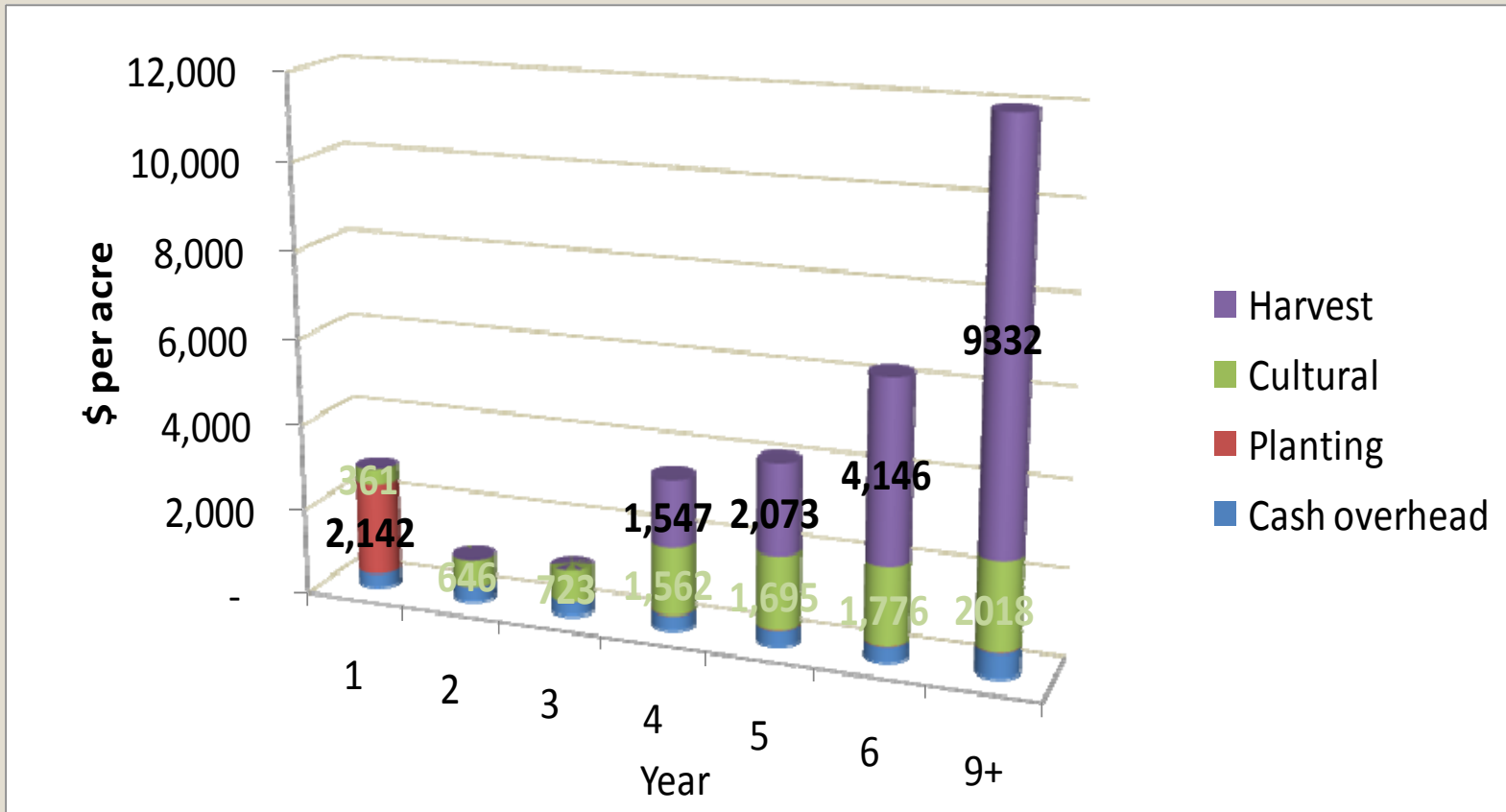
- Cultural Costs
- Harvest Costs
- **Cash Overhead**
- Noncash Overhead
 - Liability Insurance
 - Sanitary Service
 - Property Taxes and Insurance
 - Repairs on Buildings and Irrigation System

Production Costs



- Cultural Costs
- Harvest Costs
- Cash Overhead
- **Noncash Overhead**
 - Buildings, Shop, and Field Tools
 - Irrigation System
 - Fuel Tanks
 - Equipment ownership
 - Land
 - Trees

Annual Cash Costs to Establish an Orchard per acre

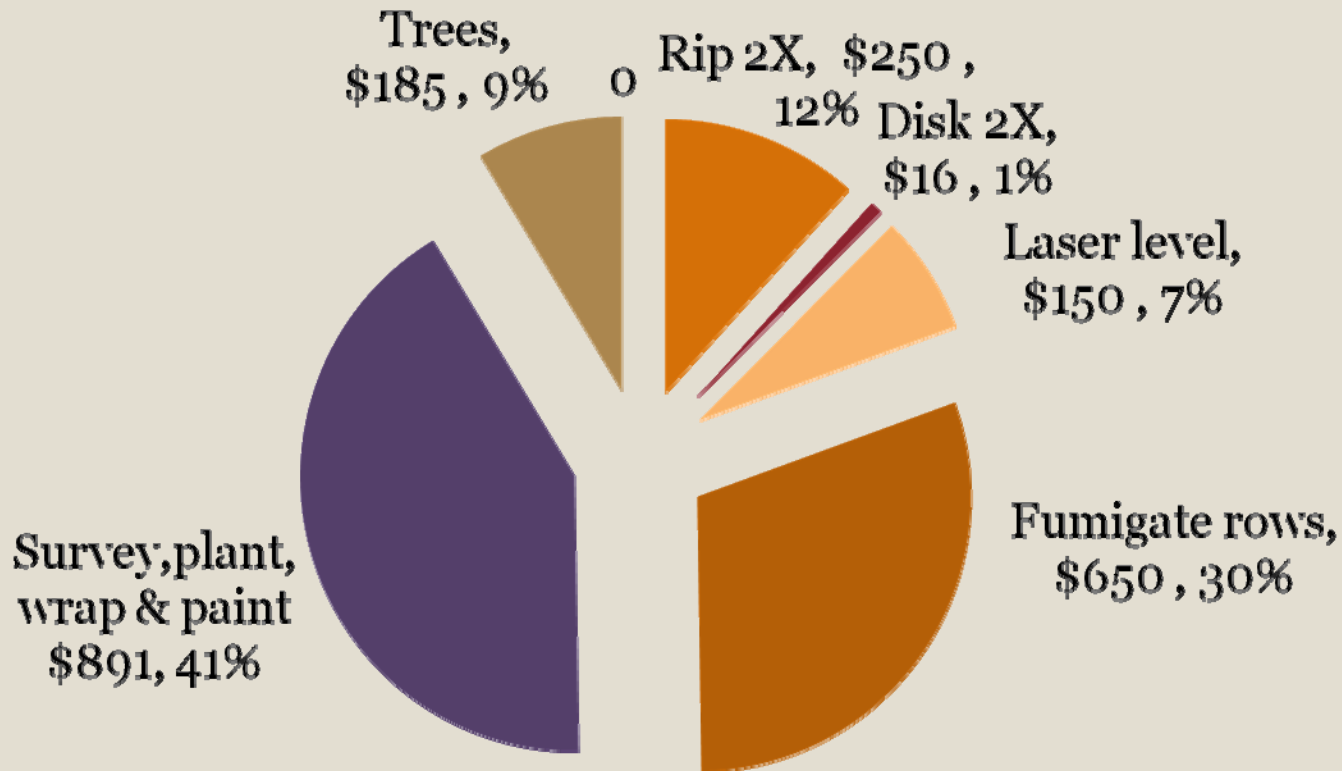


Accumulated net cash costs thru year 6 = \$8,439/acre*

*Does not include ownership costs for land, equipment, buildings or irrigation

Cherries

Planting cost detail, \$2,142 per acre

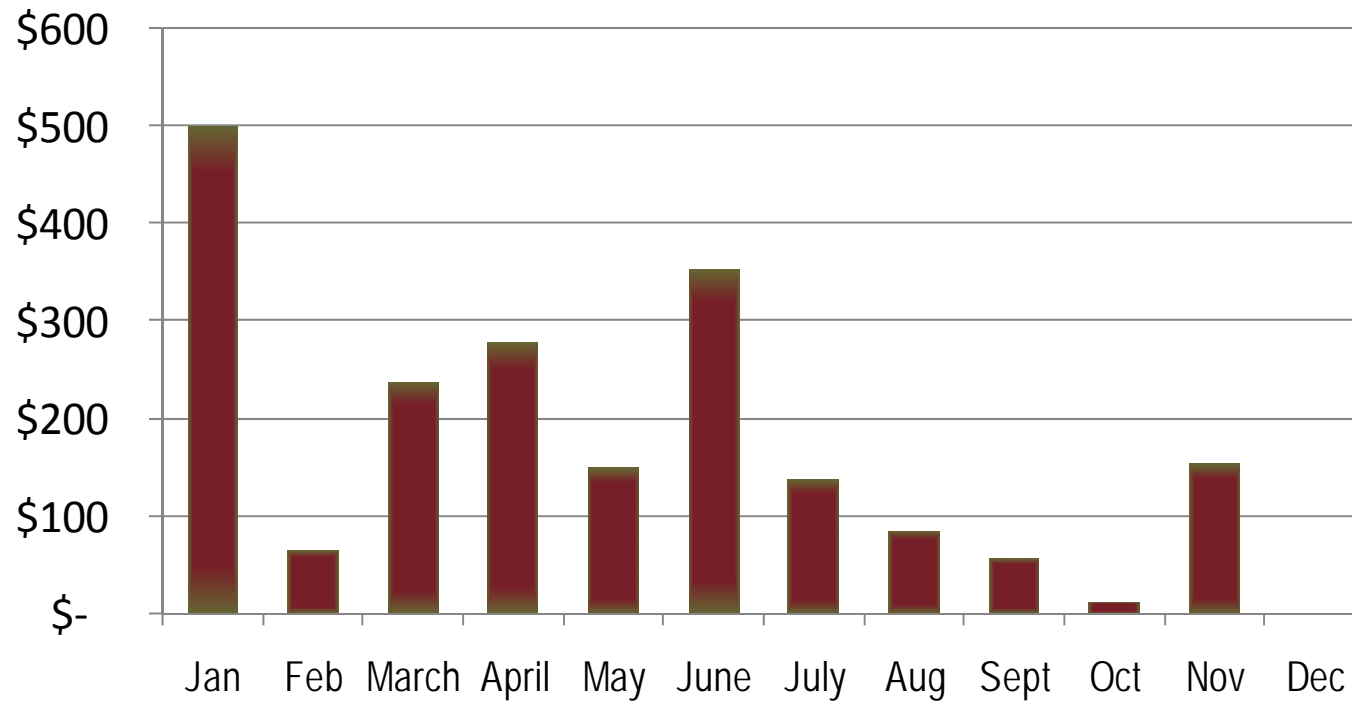


Producing Cherries - Calendar of operations



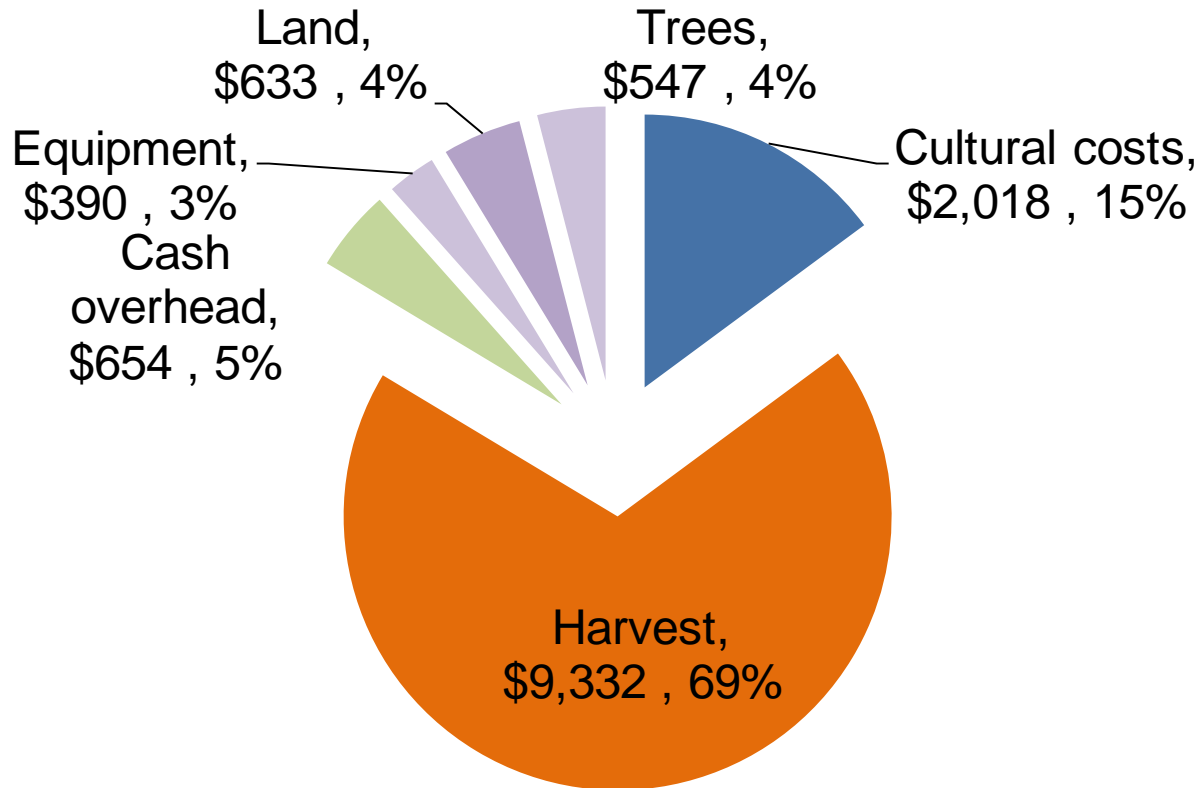
Operation	Month(s)
Prune and shred	Oct./April/June
Dormant, delayed dormant insect	January - March
Growth regulator	Feb., April
Pollination	March
Insect control	April, June – Sept.
Disease control	March – May, Nov.
Weed control	April - November
Fertilize	June
Irrigate	April – Sept.
Harvest	May - June

Monthly cultural costs (Excluding harvest)



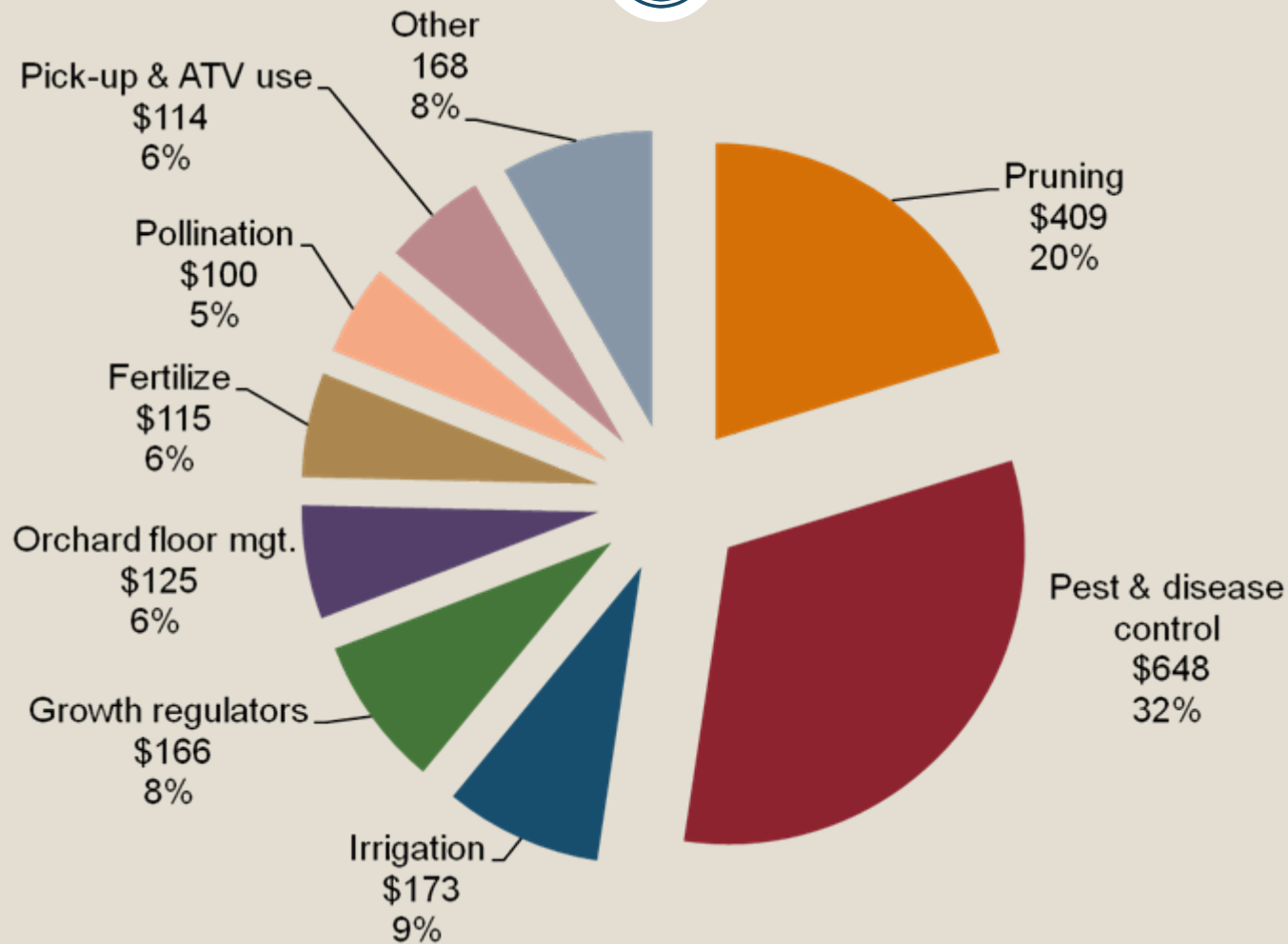
Cherries

Total cost of production, \$13,573



Cherry

Cultural Costs (\$2,018)



Expected yields and prices



- Marketable production begins in the 4th year
 - Year 4 - .9 field tons per acre
 - Year 5 – 1.2 tons
 - Year 6 – 2.4 tons
- Expected yield at maturity: 5.1 tons (gross)
 - 75% fresh
 - 20% cullage
 - 5% brining
- Expected price range :
 - Domestic fresh - \$18 - \$50 per box
 - Export fresh \$24 - \$56 per box
 - Brining \$.15 - \$.31 per pound

Costs per box at varying yields

