



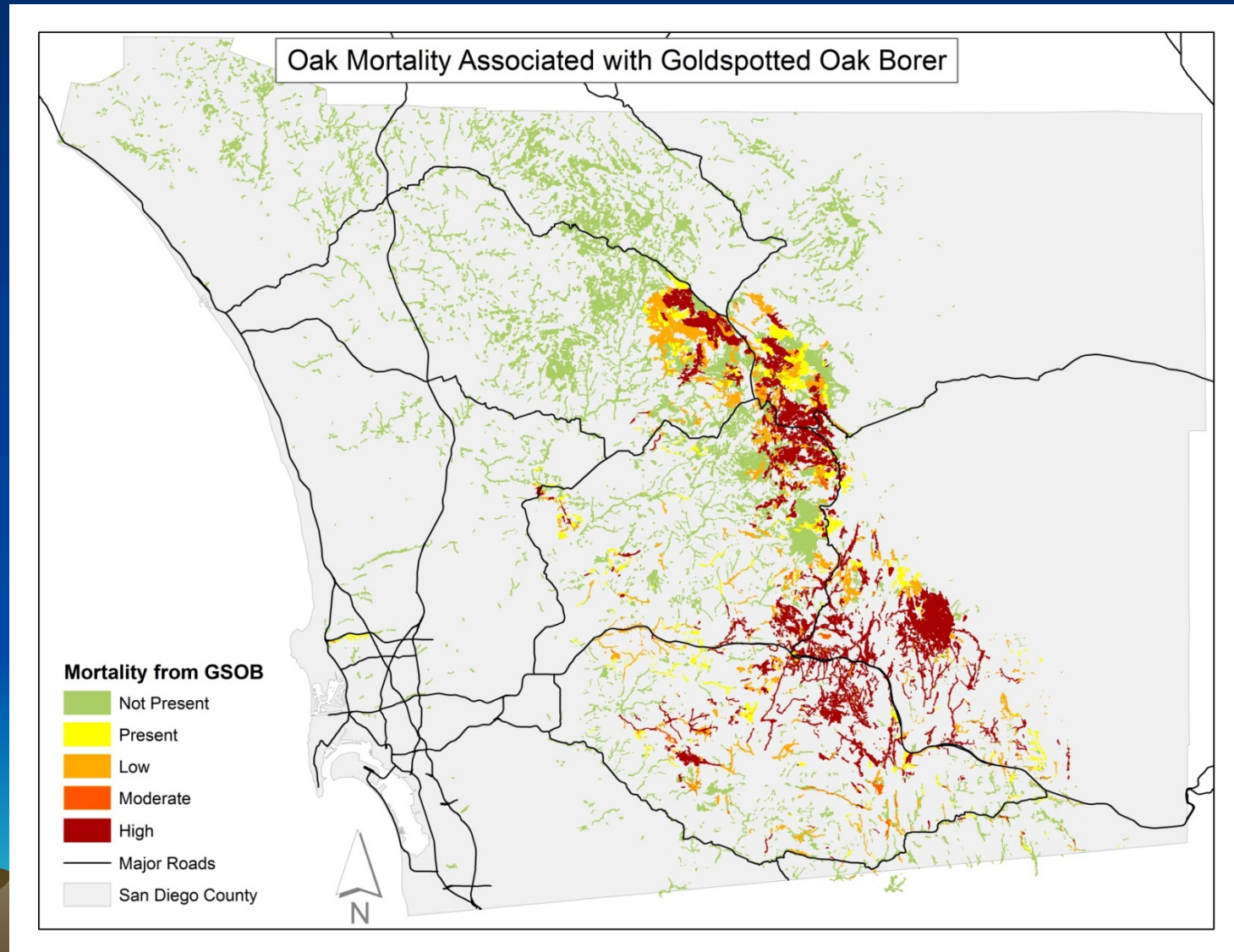
What 's Happening to Our Oaks?
(GSOB, oak mortality and the need for restoration planning)

**Kevin Turner,
Goldspotted Oak Borer Program Coordinator
San Diego GSOB Steering Committee Executive Director
University of California Riverside**

Goldspotted Oak Borer (Agrilus auroguttatus)



Since 2004, goldspotted oak borer has killed over 80,000 Oaks across 120,000 acres of woodlands





GSOB is changing the social & economic values of parks- woodlands- real estate while degrading habitat costing govt. & the private economy millions.

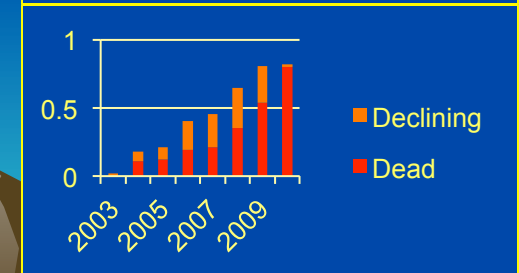
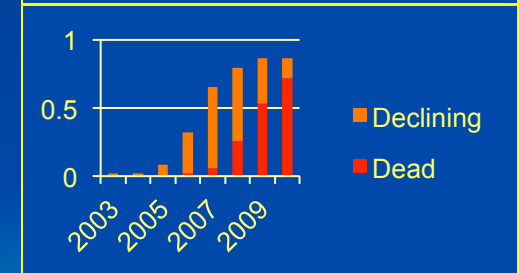
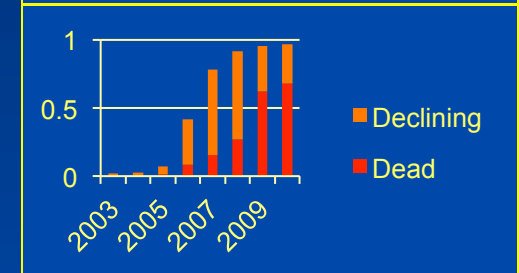
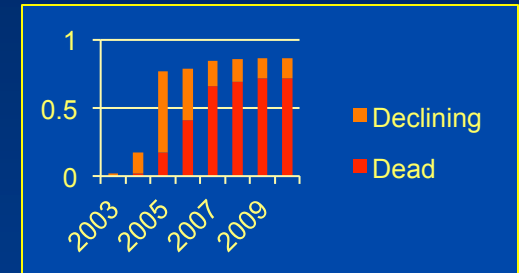
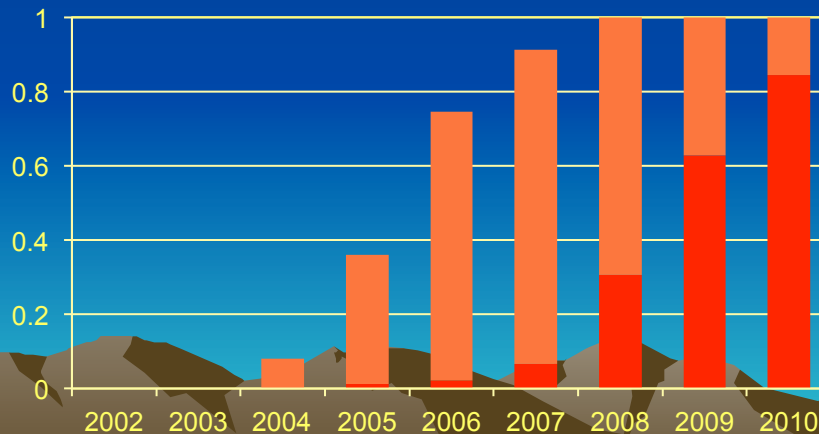
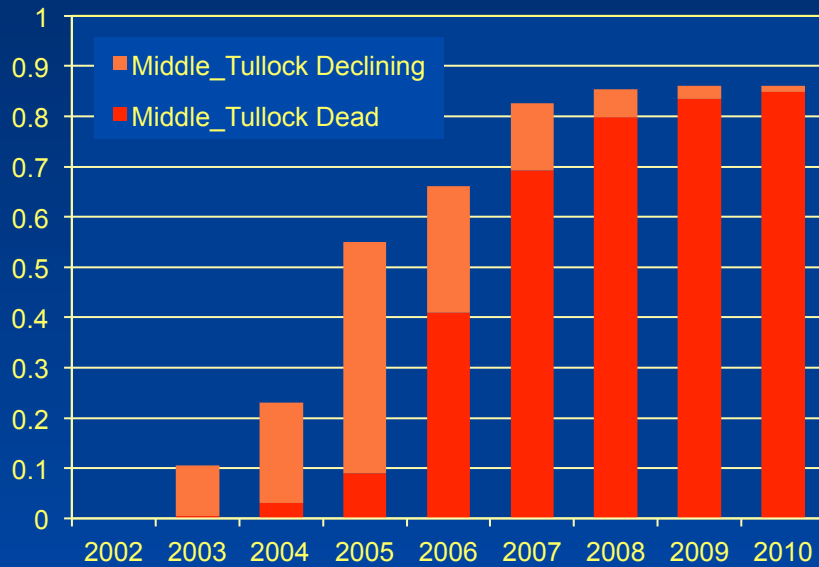


**Primary Species affected: Coast Live Oak (dark green)
and Black Oak (light green)**



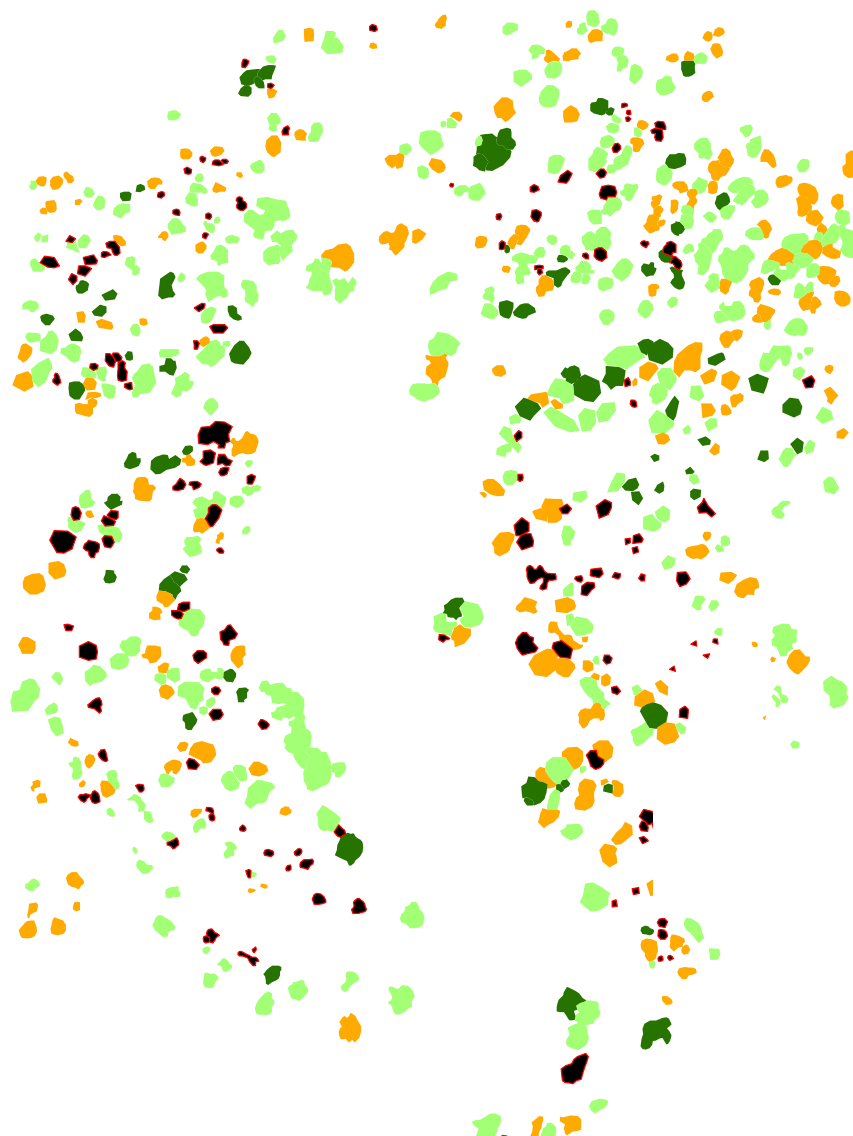
Loss of 80 to 95% of oak canopy in 6 to 8 years

Coast Live Oak (*Quercus agrifolia*) and Black Oak (*Q. kelloggii*)

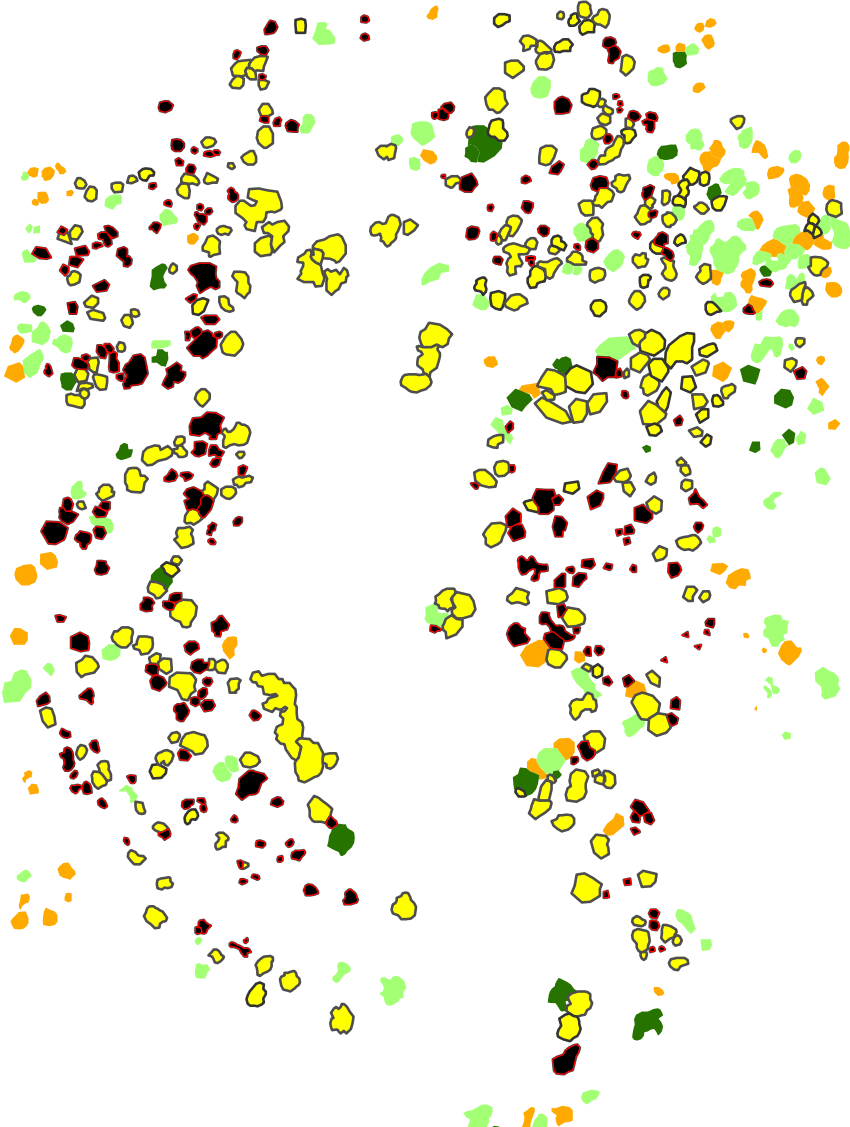


Pattern of Oak Loss over time (2002-2010)

2002

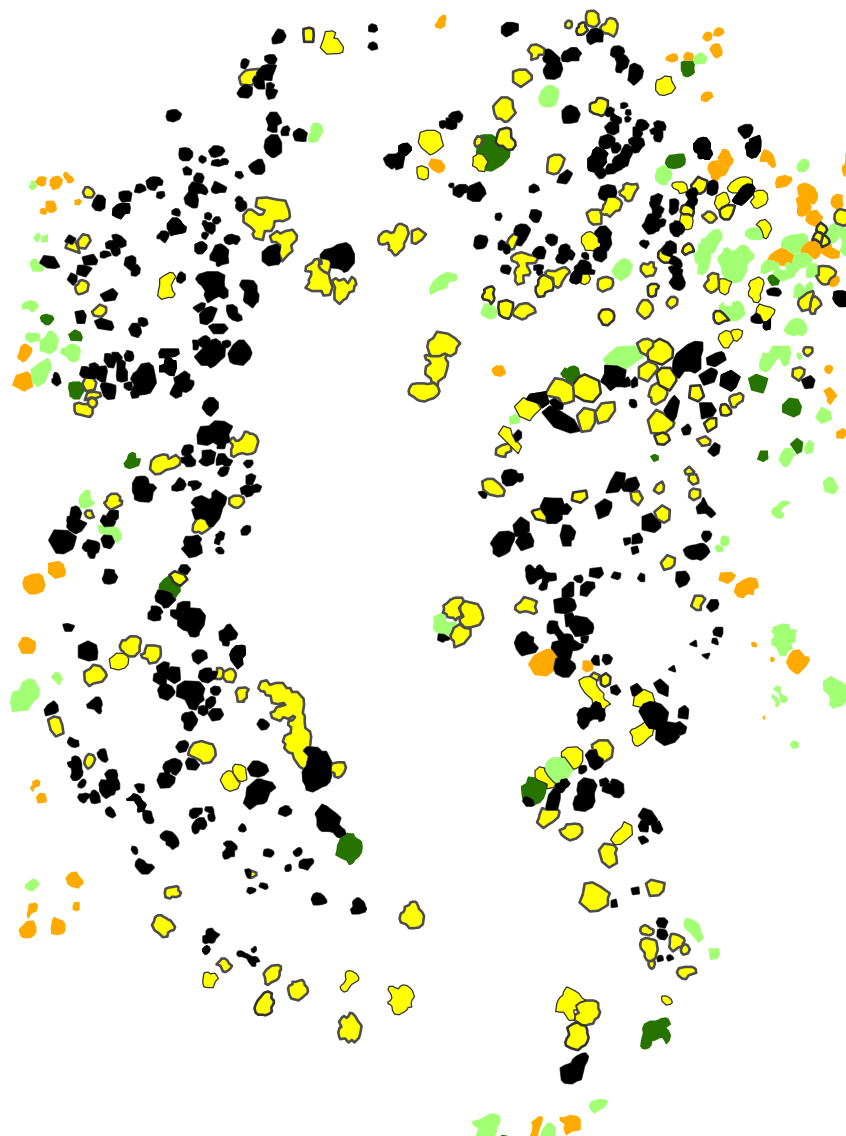


2004



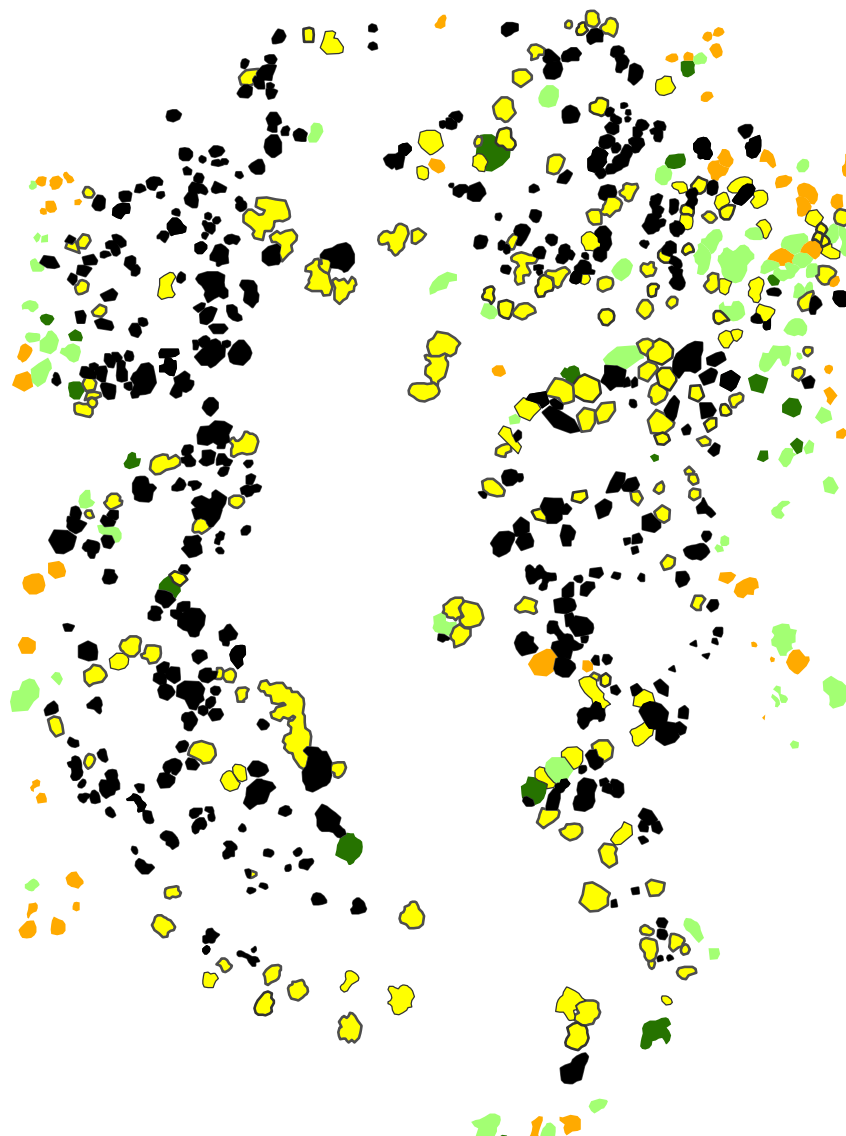
Pattern of Oak Loss over time (2002-2010)

2005



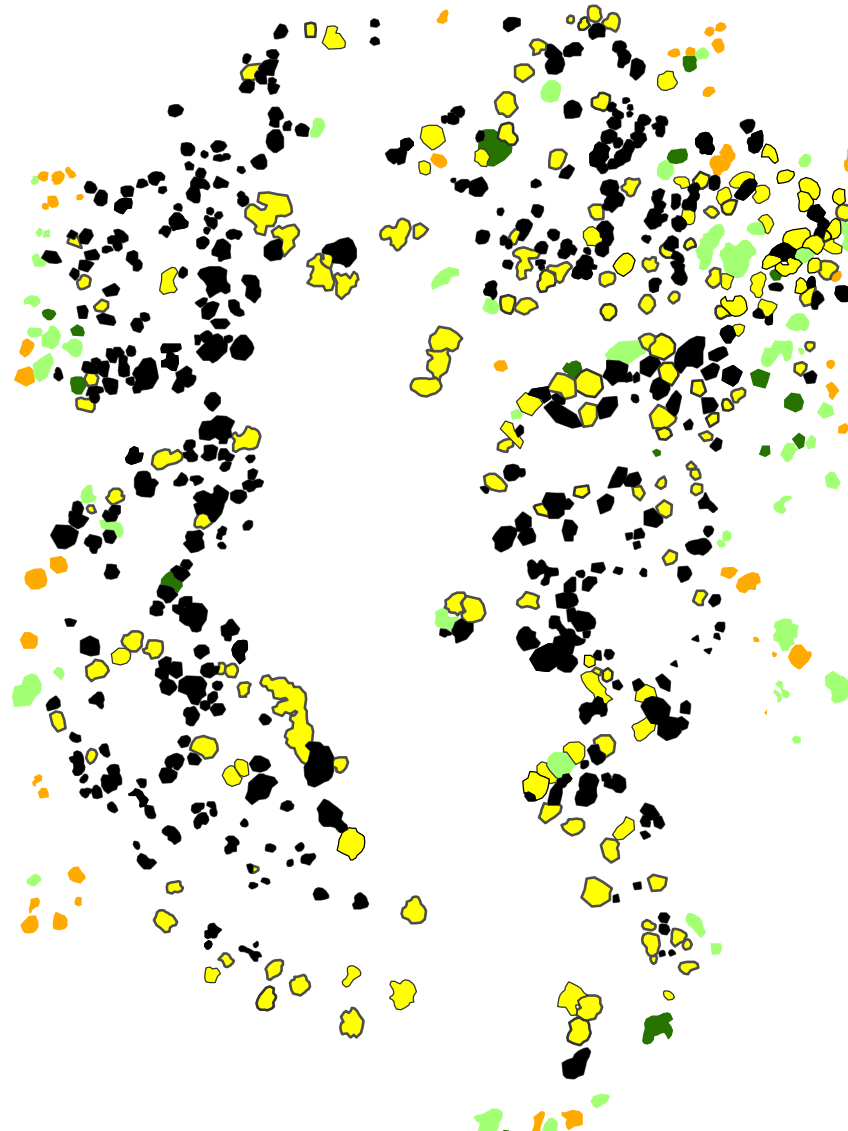
Pattern of Oak Loss over time (2002-2010)

2006



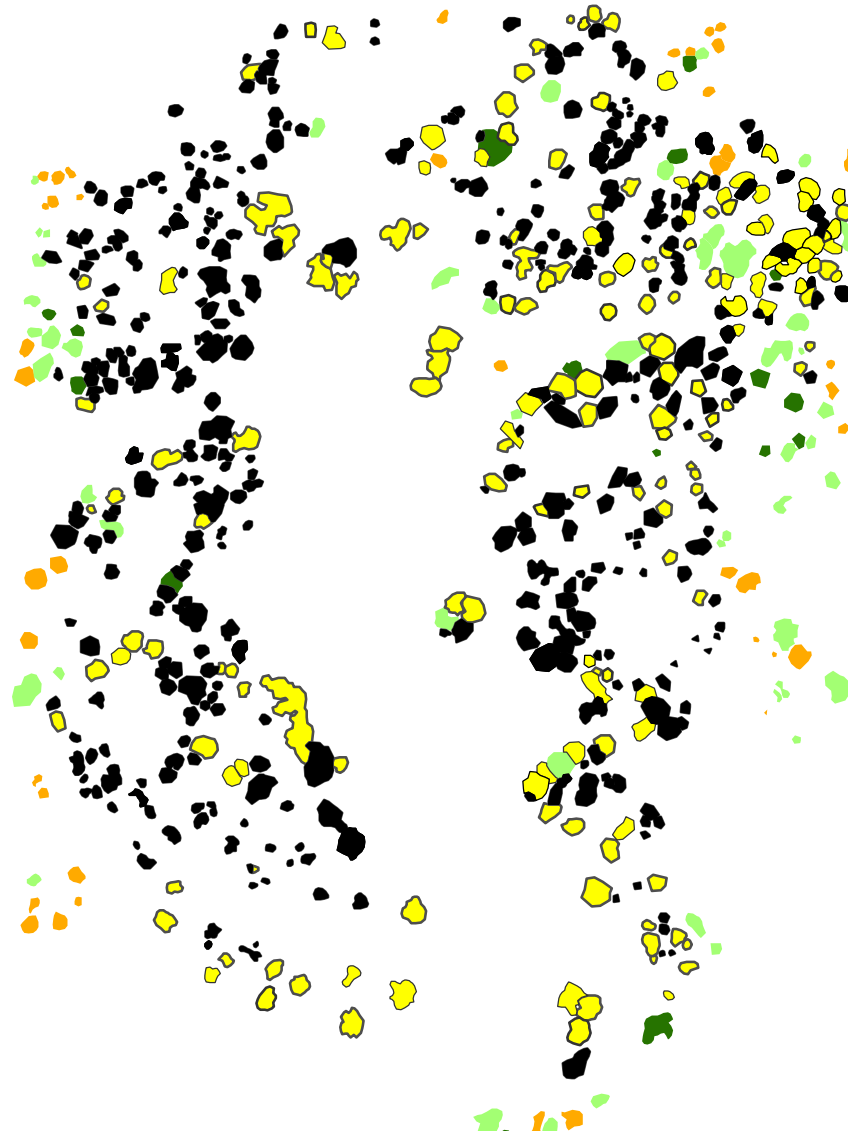
Pattern of Oak Loss over time (2002-2010)

2007



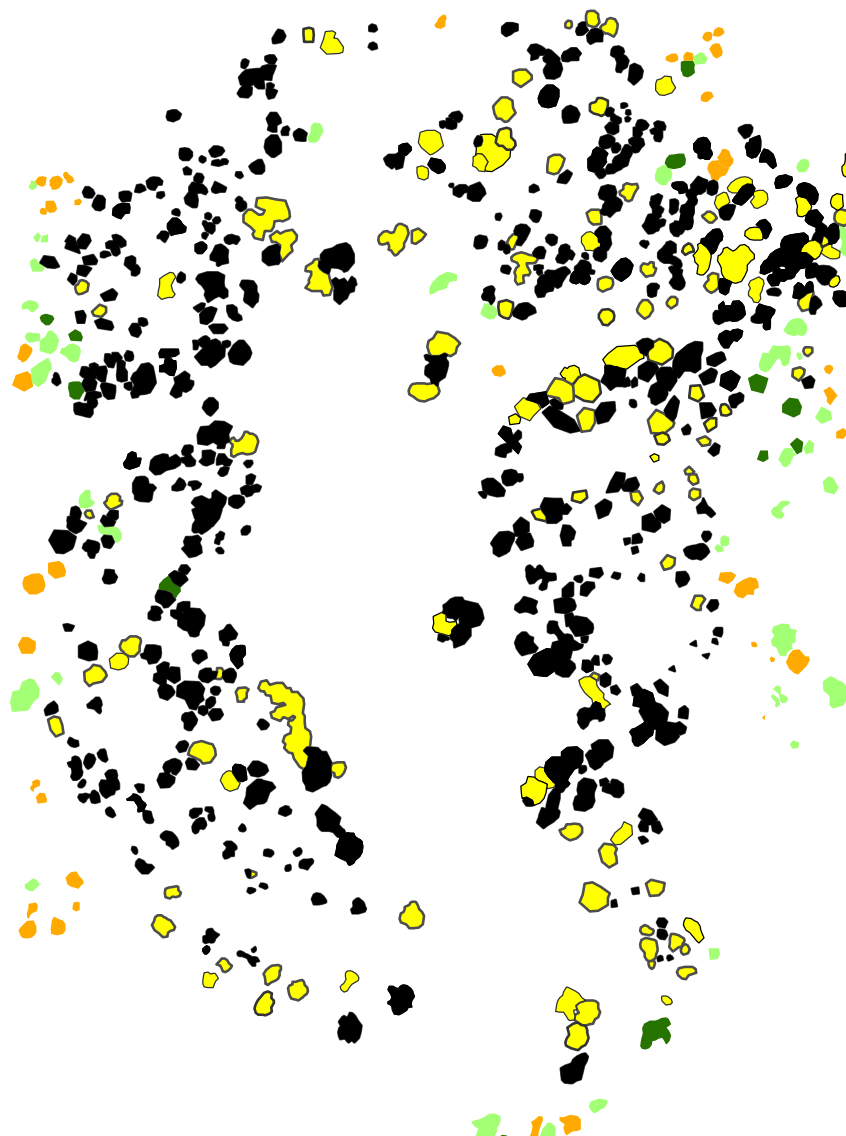
Pattern of Oak Loss over time (2002-2010)

2008



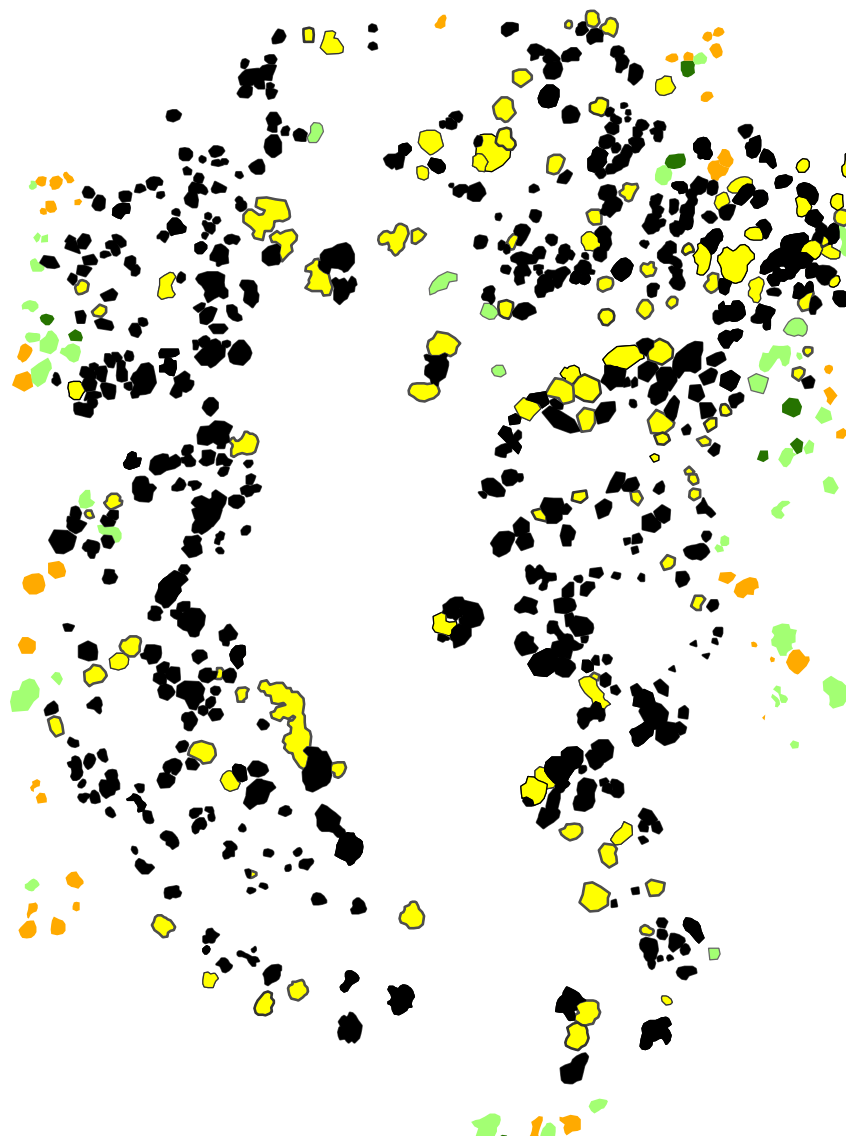
Pattern of Oak Loss over time (2002-2010)

2009

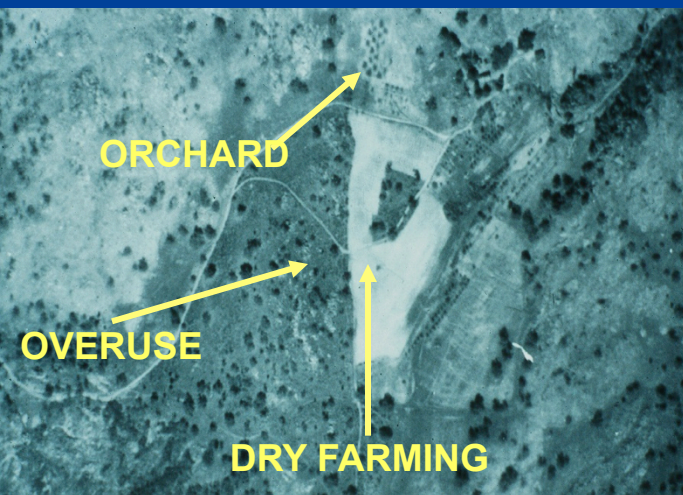


Pattern of Oak Loss over time (2002-2010)

2010



Land use including grazing and other cultural and environmental factors have pushed trees into synchrony and larger size classes



1928



1990



Understory replacement trees are not always present to replenish the stand. And, once the acorn source is lost, it may be difficult to reestablish the woodland with local stock.

San Diego County has experienced the loss of tens of thousands of oak trees as a result of goldspotted oak borer attacks. With more than a million acres of susceptible oaks in southern California and millions more acres throughout the state, communities are encouraged to work collectively to develop prevention, monitoring, and response plans before GSOB strikes.



For more information, visit the GSOB website at www.gsob.org.

Examples of other community tree readiness and management plans:

- Emerald Ash Borer (EAB):

<http://emeraldashborer.info/communityplan.cfm>

- Urban Forestry Management Plans:

www.ufmptoolkit.com/resources-example-UFMP.htm



Guidelines for Strategic Action Before GSOB Strikes Your Community



Goldspotted Oak Borer Community Preparedness Plan

UC
CE

Restoration planning is a critical component of preparedness!