



Road Inventories in the Lake Tahoe Basin

Lake Tahoe Basin Management Unit, Forest Service

Garrett Villanueva
Assistant Forest Engineer

Summary

- Process
- Findings
- NEPA Analysis
- Implementation
- Management
- Travel Analysis



Process

- Research
- Collaboration
- Testing



Why Inventory ?



Objective



- Identify roads with a high potential to deliver sediment to the channel network.
- Map and evaluate stream crossings and connectivity to riparian areas.

Inventory



- Stream Crossing Segments
 - culvert type, size, and condition;
 - stream type, channel width, diversion potential, and diversion consequences; and
 - Road surface type, road position, road-stream connectivity, flow paths, and drainage features.
- SEZP Segments
 - Type of SEZP (stream zone or wetland);
 - Average distance to SEZP;
 - Segment length;
 - Road surface type and slope position; and
 - Road-stream connectivity, flowpaths, and drainage features.
- Non-SEZP Segments
 - Segment length; and
 - Road surface type, slope position, road-stream connectivity, flowpaths, and drainage features

Hazard Assessment

- **Weighted Hazard**

○ Element	Hazard Score		Weight	High Score
○ Hydrologically Connected	0,1	x	30.0	= 30
○ Length Connected	0-3	x	8.3	= 25
○ Surface Type	0-2	x	7.5	= 15
○ Baileys	0-2	x	5.0	= 10
○ Road Grade	0-2	x	2.5	= 5
○ Hillslope Gradient	0-2	x	2.5	= 5
○ Gully Present	0,1	x	2.5	= 5
○ Gully Length	0-2	x	2.5	= 5
○ Total Weighted Hazard Score				100

GIS Analysis

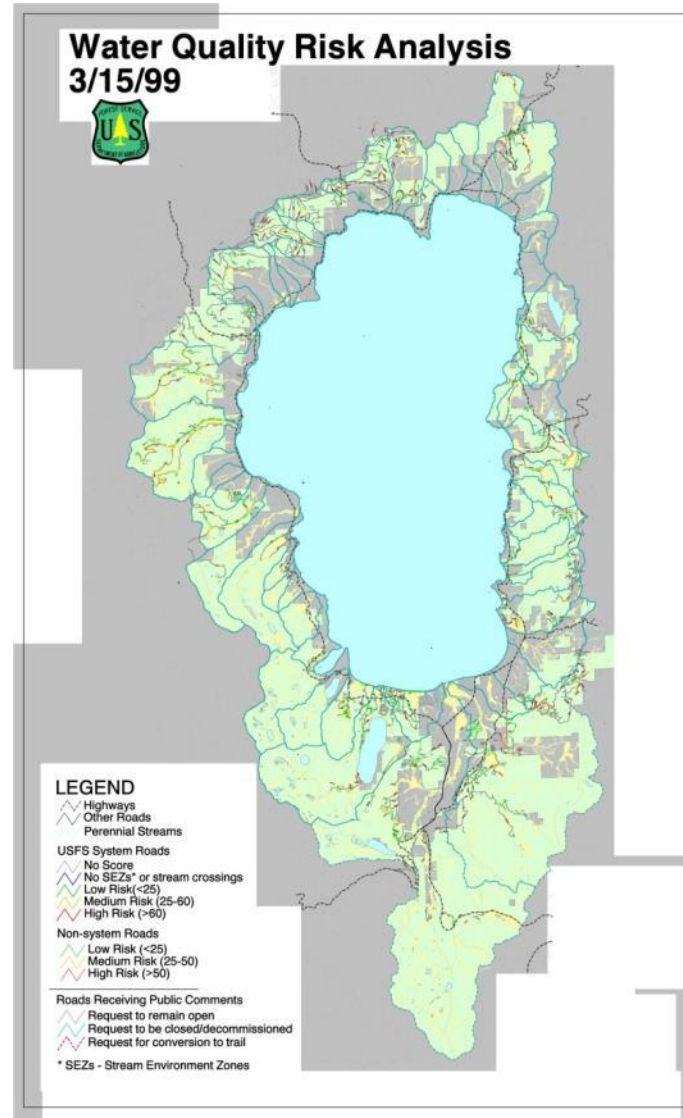
- GIS Analysis (stream crossing)
- Stream crossing analysis can be visually displayed by their hazard score.
-
- SEZP and Non-SEZP Zones
- Segment Length (Calculated by GIS)
- Average Distance Road is from Watercourse
- Range of Distances Road is from Watercourse
- Road Template
- Slope Position
- Surface Type
- Stream Type
- Hydrologically Connected (Stream or Wetland)
- Length Hydrologically Connected
- Baileys Land Capability Classification (Existing GIS Layer)

- GIS Analysis (SEZP)

○ Color:	Red	Orange	Green
○ Rating	<u>Very High</u>	<u>High</u>	<u>Low</u>
	Hydro. Conn.	Hydro. Conn.	----
	Conn. Length High	Conn. Length Low	----

Findings

- Rain on Snow are the most intense events in Tahoe
- Greatest Sedimentation occurring at Stream Crossings.
- Stream Diversions are caused the greatest sedimentation to surface water.
- Greater hydrologic connectivity = more erosion
- More use = more erosion
- Little mass wasting potential in the Basin





Power Line / Pioneer Trail Area
Draft - 05/24/99

0.5 0 0.5 1 Miles



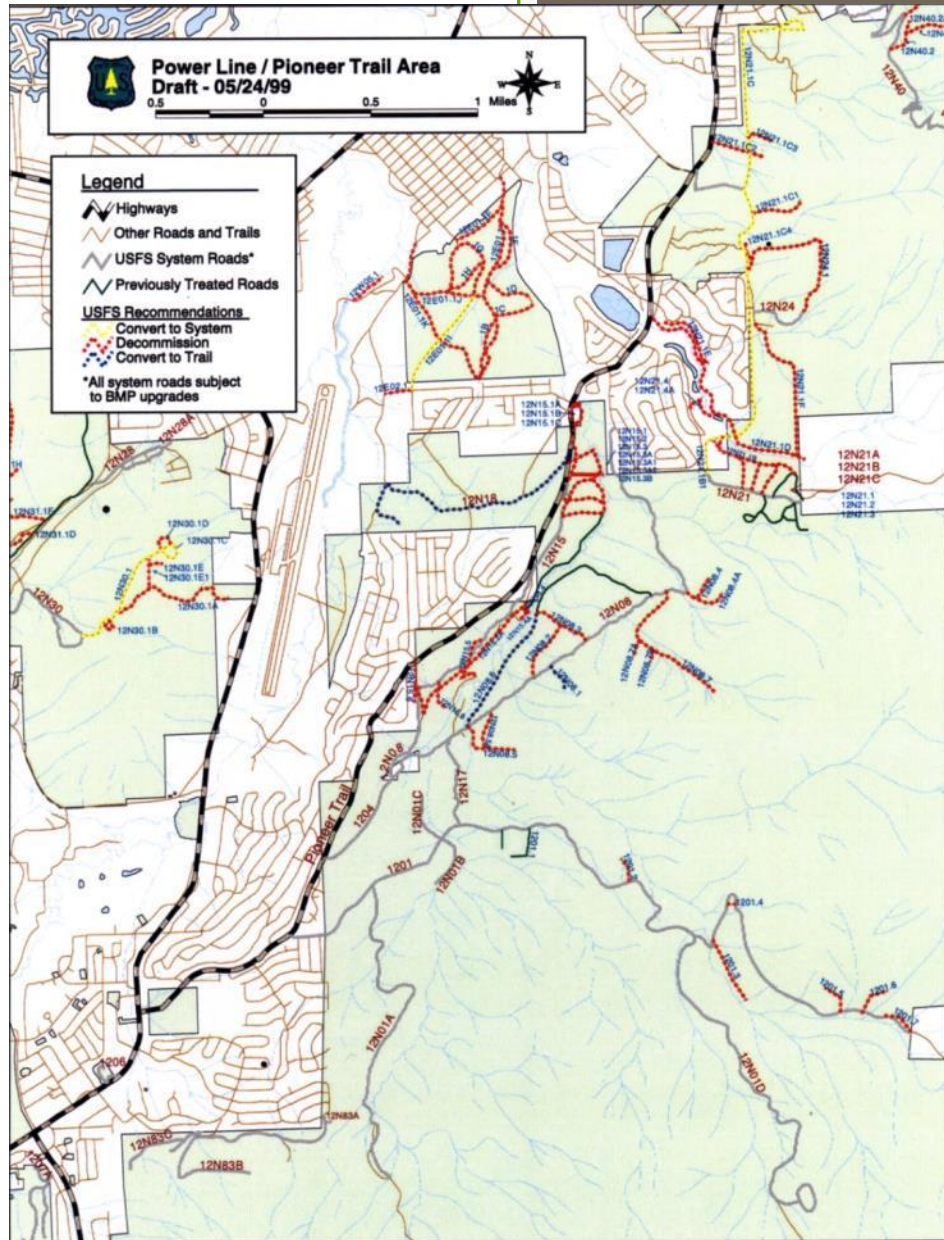
Legend

- Highways
- Other Roads and Trails
- USFS System Roads*
- Previously Treated Roads


USFS Recommendations

- Convert to System
- Decommission
- Convert to Trail




*All system roads subject to BMP upgrades






**Martis Peak
Draft -05/24/99**



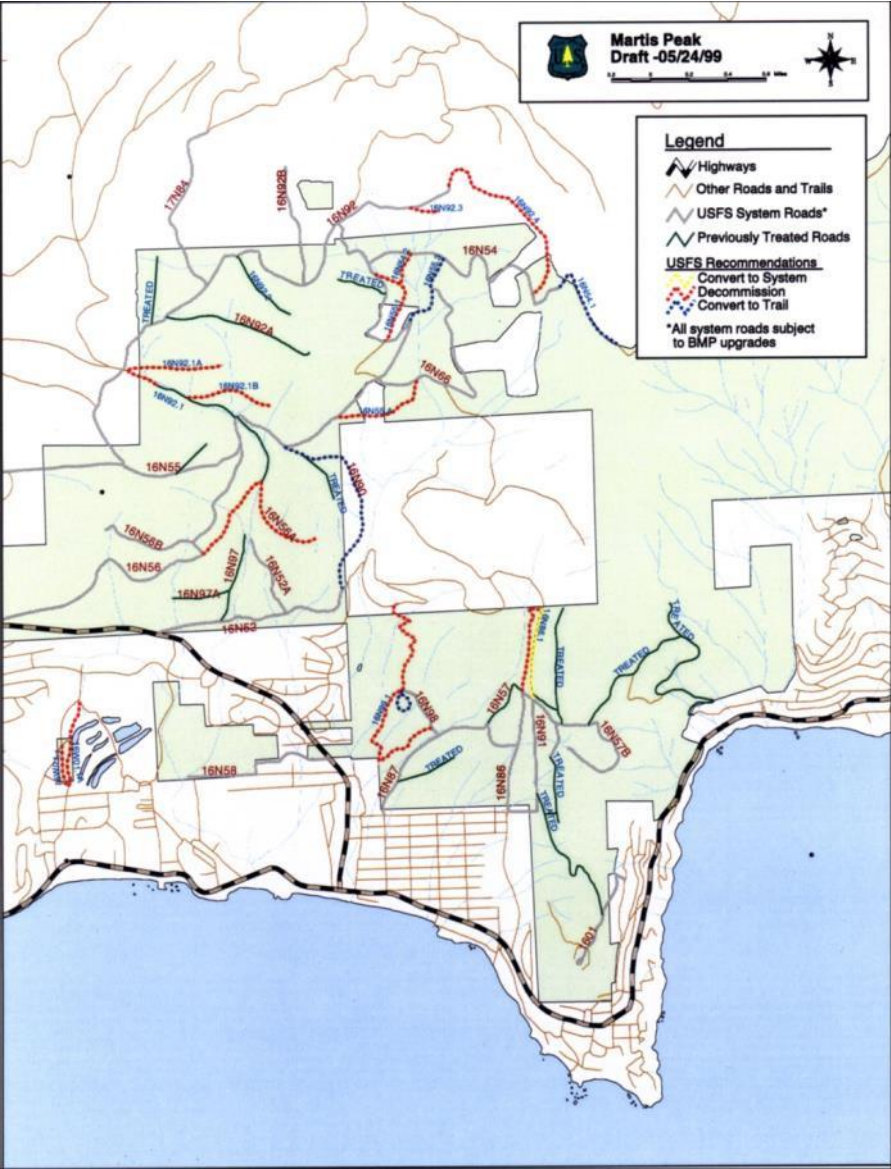
Legend

-  Highways
-  Other Roads and Trails
-  USFS System Roads*
-  Previously Treated Roads

USFS Recommendations

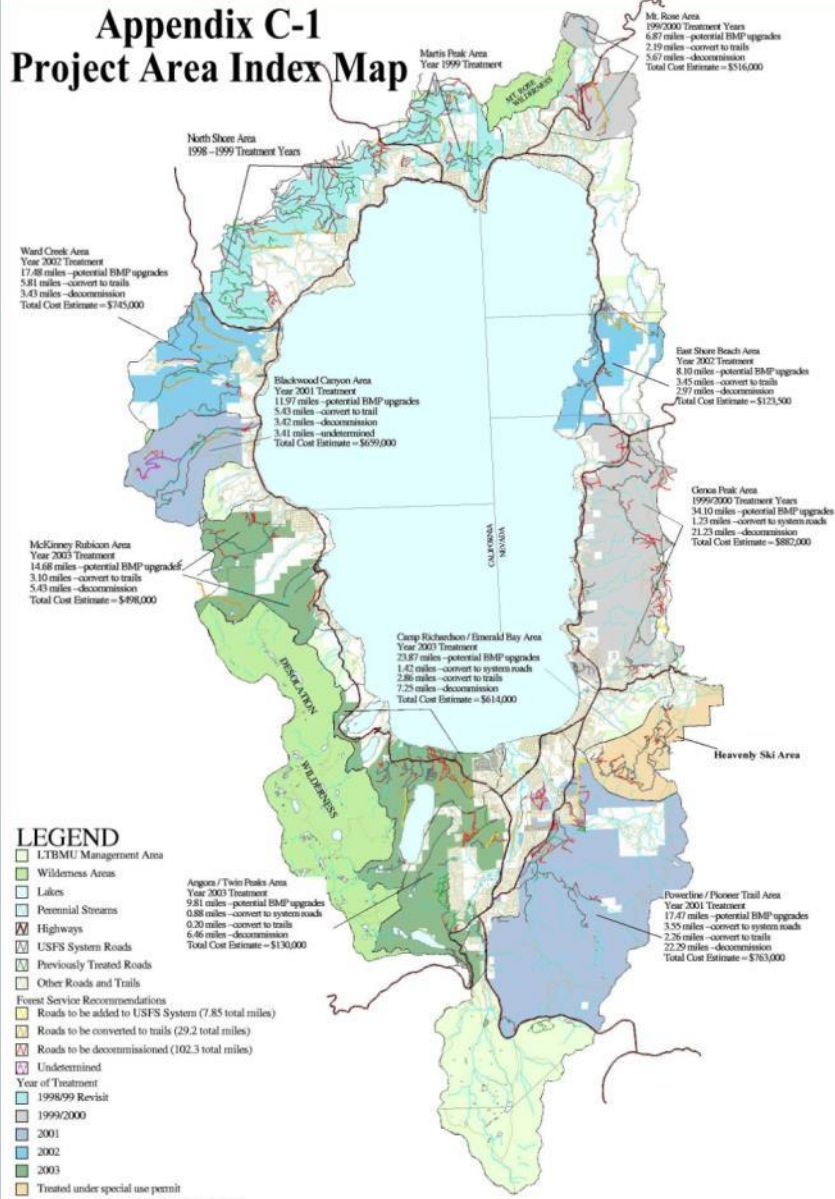
-  Convert to System
-  Decommission
-  Convert to Trail

*All system roads subject to BMP upgrades





Appendix C-1 Project Area Index Map



Funding!



Map Scale = 1:60000

NEPA

- Each “Transportationshed” was evaluated as a stand alone NEPA document.
- Worked with Lahontan Water Quality Resource Control Board to develop NEQA documents.
- Accomplished 1-2 NEPA documents per year until the entire basin was covered.

NEPA

- Wildlife Surveys



Other Surveys

- Archaeological surveys
- Hydrological evaluation
- Botanical Surveys
- Noxious Weed Surveys
- Engineering Survey



NEPA Process

- Develop Proposed Action
- Involve Public and Stakeholders
- Address Comments
- Develop Alternatives
- Seek Additional Comments
- Record of Decision

Implementation

- Inventoried 432 miles of roads
- Decommissioned 108 miles of roads within the Lake Tahoe Basin
- Reconstructed approximately 110 miles of roads
- 5 year maintenance rotation of the rest of the road system

Design

- Forest Service Handbooks
- Local modeling and study
- Empirical experience
- Limited by locally available materials



Fundamental Design Principals

- Minimize Hydrologic Connectivity
- Mimic Natural Hydrology
- Prevent Stream Diversion
- Minimize Future Maintenance Needs
- Maximize Infiltration
- Sheet Flow

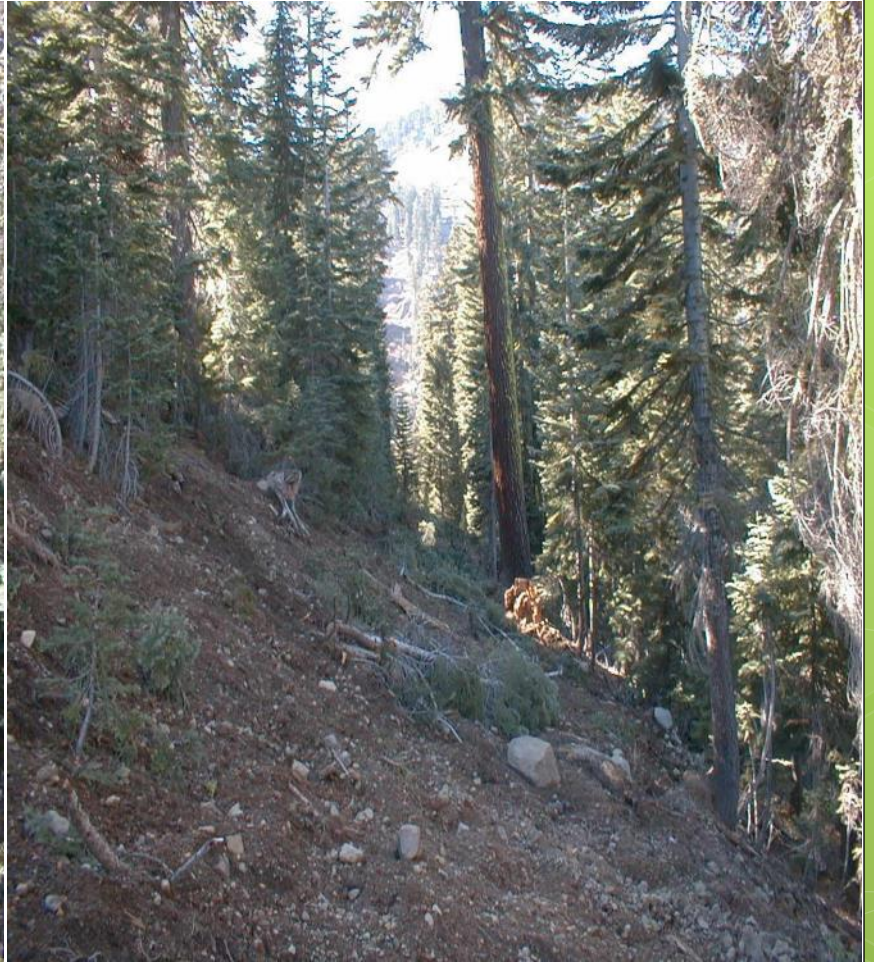
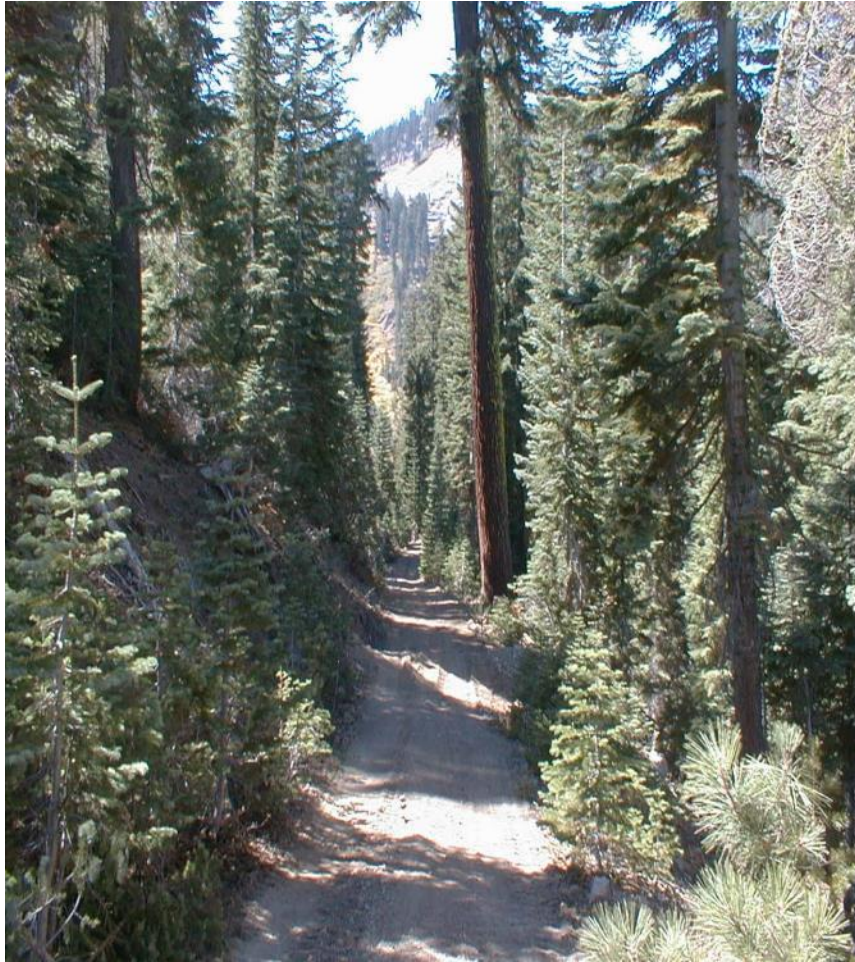


Decommissioning

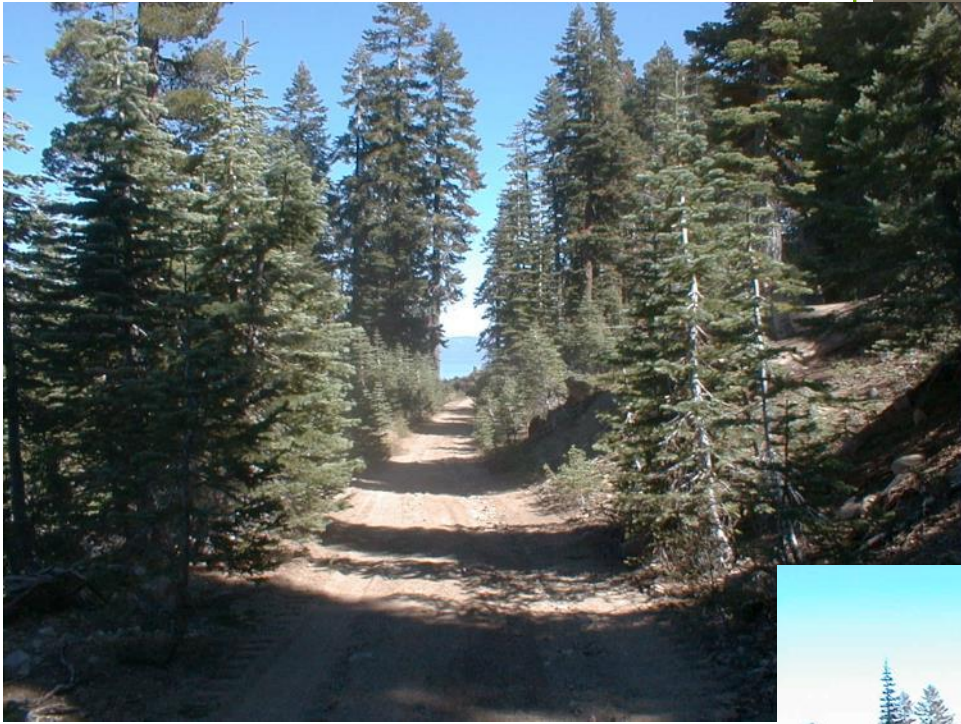


































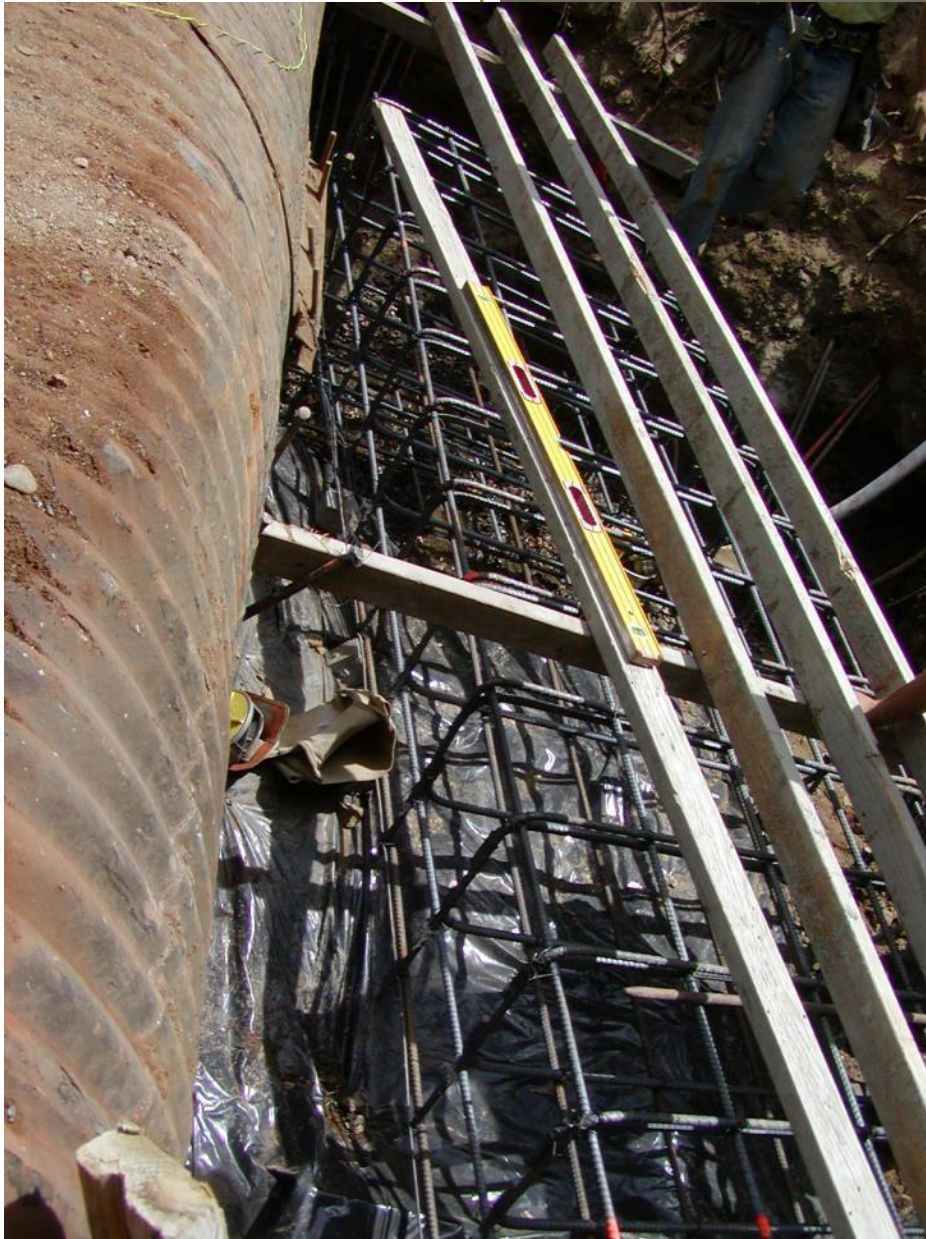




Reconstruction

























































Travel Analysis Process

Travel analysis assesses the current forest transportation system and identifies issues and assesses benefits, problems, and risks to inform decisions related to identification of the minimum road system per 36 CFR Part 212.5(b)(1) and designation of roads, trails and areas for motor vehicle use per 36 CFR Part 212.51.





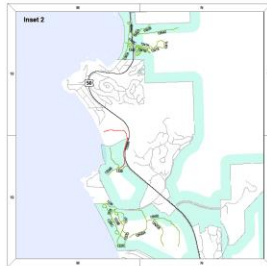
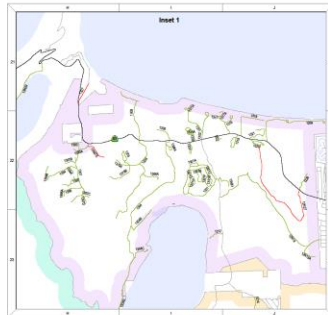


TRAVEL ANALYSIS PROCESS

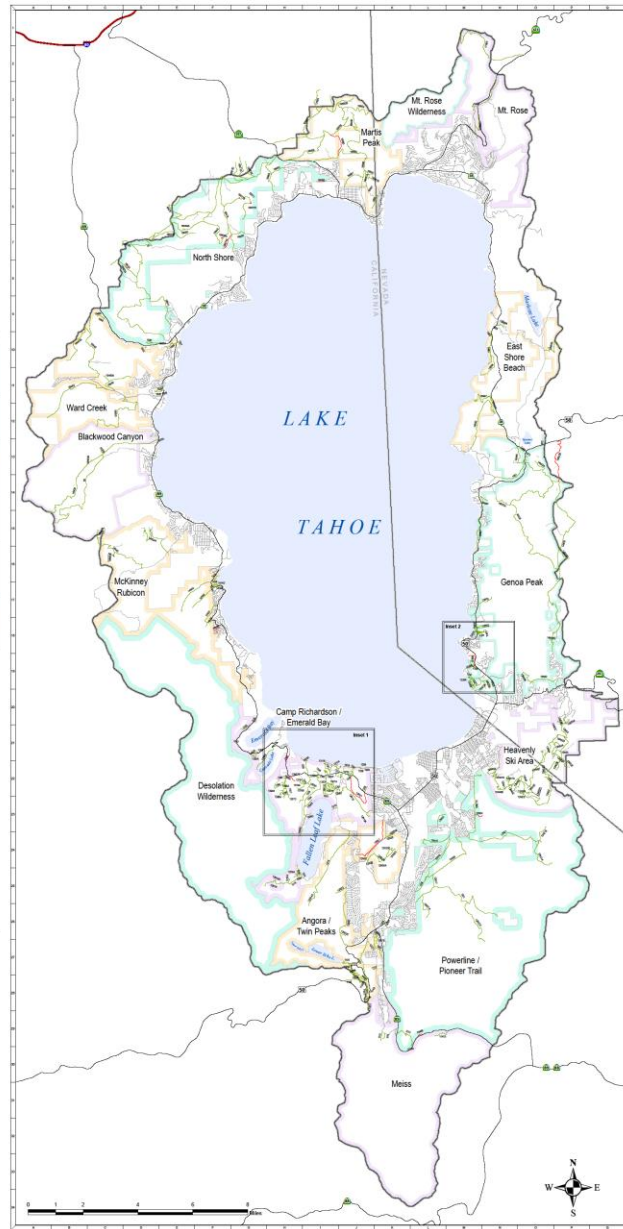
LAKE TAHOE BASIN MANAGEMENT UNIT
JANUARY 2012

Recommended Minimum Road System

FS Roads Analyzed		Other Roads	
Minimum Road			
	No		State & US Highway
	Yes		Township
			Local Road



FS Road Number	Minimum Road	Other Road	Minimum Road	Other Road
001		001		001
002		002		002
003		003		003
004		004		004
005		005		005
006		006		006
007		007		007
008		008		008
009		009		009
010		010		010
011		011		011
012		012		012
013		013		013
014		014		014
015		015		015
016		016		016
017		017		017
018		018		018
019		019		019
020		020		020
021		021		021
022		022		022
023		023		023
024		024		024
025		025		025
026		026		026
027		027		027
028		028		028
029		029		029
030		030		030
031		031		031
032		032		032
033		033		033
034		034		034
035		035		035
036		036		036
037		037		037
038		038		038
039		039		039
040		040		040
041		041		041
042		042		042
043		043		043
044		044		044
045		045		045
046		046		046
047		047		047
048		048		048
049		049		049
050		050		050
051		051		051
052		052		052
053		053		053
054		054		054
055		055		055
056		056		056
057		057		057
058		058		058
059		059		059
060		060		060
061		061		061
062		062		062
063		063		063
064		064		064
065		065		065
066		066		066
067		067		067
068		068		068
069		069		069
070		070		070
071		071		071
072		072		072
073		073		073
074		074		074
075		075		075
076		076		076
077		077		077
078		078		078
079		079		079
080		080		080
081		081		081
082		082		082
083		083		083
084		084		084
085		085		085
086		086		086
087		087		087
088		088		088
089		089		089
090		090		090
091		091		091
092		092		092
093		093		093
094		094		094
095		095		095
096		096		096
097		097		097
098		098		098
099		099		099
100		100		100



Motor Vehicle Use Map

1. An MVUM must display:

a. Designated roads, trails, and areas on an administrative unit or ranger district

(36 CFR 251.56); and

b. Components of designations, including vehicle class, time of year, and any designations for dispersed camping or game retrieval under 36 CFR 212.51 (b)

(36 CFR 212.51 and 251.56; FSM 7715.74, 7716.11, and 7716.12).

Use the following seven categories to identify motor vehicle classes on an MVUM:

a. Roads Open to Highway Legal Motor Vehicles Only.

b. Roads Open to All Motor Vehicles.

c. Trails Open to All Motor Vehicles, including both highway-legal and non-highway-legal vehicles.

d. Trails Open to Motor Vehicles 50 Inches or Less in Width.

e. Trails Open to Wheeled Motor Vehicles 50 Inches or Less in Width.

f. Trails Open to Motorcycles Only. Sidecars are not permitted.

g. Special Vehicle Designation.

Click on Comment and Share to create, mark-up and send PDF files.

Legend

- Road Open to Highway Legal Vehicles Only
- Road Open to All Vehicles
- Trail Open to Vehicles 50' or Less in Width
- Trail Open to Motorcycles Only
- Seasonal Designation (See Table)
- Highway, U.S. State
- Other Public Road
- Area Open to Cross County Travel (Open to High Clearance Vehicles and Non-Highway Legal Vehicles from 05/10-11/15, sunrise to sunset)
- Mispost Marker
- Peak
- Motorized Trailhead
- Forest Service Campground
- Forest or Unit Boundary
- Non-National Forest System Lands within the National Forest
- Wilderness
- Large Lake

Area Open to Cross County Travel:
 - Sand Pit: Travel Management Area is open High Clearance Vehicles and Non-Highway Legal Vehicles from 05/10-11/15, sunrise to sunset.

Travel Along Designated Routes:
 - Motor vehicles may be parked within one vehicle width from the edge of the road surface when it is to do so without causing damage to NFS resources or facilities, unless prohibited by state law, traffic sign, or an order (36 CFR 261.54).

Mispost Marker:
 - This symbol is used to display the beginning and ending mileposts of a road that has a change in the designation but not the symbology.

Motorized Trail Access:
 - This symbol indicates a trailhead for access to a motorized route. Not all motorized routes have trailheads and those that do may range from primitive to developed.

EXPLANATION OF LEGEND ITEMS

Roads Open to Highway Legal Vehicles Only:
 These roads are open only to motor vehicles licensed under State law for general operation on all public roads within the State.

Roads Open to All Vehicles:
 These roads are open to all motor vehicles, including smaller off-highway vehicles that may not be licensed for highway use but not to owners or owners' vehicles under State traffic law.

Trails Open to Vehicles 50' or Less in Width:
 These trails are open only to motor vehicles less than 50 inches in width at the widest point on the vehicle.

Trails Open to Motorcycles Only:
 These trails are open only to motorcycles. Sidcars are not permitted.

Seasonal Designation:
 This symbol, used in conjunction with one of the other road or trail symbols, indicates that the road or trail is open only during certain portions of the year. Refer to the Seasonal and Special Designation Table for further instructions.

Other Public Roads:
 - Highway, U.S. State
 - Other Public Road

These symbols are used to show routes the Forest Service does not have jurisdiction over and has not designated for motorized use. These symbols are part of the reference layers showing connections to towns and cities outside the forest boundary.

Areas Open to Cross County Travel:
 These are areas on National Forest System land that allow cross-county travel by motorized equipment. The Sand Pit CAW Travel Management Area is open to High Clearance Vehicles and Non-Highway Legal Vehicles from 05/10-11/15, sunrise to sunset.

Mispost Marker:
 This symbol is used to display the beginning and ending mileposts of a road that has a change in the designation but not the symbology.

Motorized Trail Access:
 This symbol indicates a trailhead for access to a motorized route. Not all motorized routes have trailheads and those that do may range from primitive to developed.

OPERATOR RESPONSIBILITIES

Operating a motor vehicle on National Forest System land, National Forest System trails, and on areas on National Forest System land carries a greater responsibility than operating that vehicle in a city or other developed setting. Not only do you have to follow applicable traffic laws, you must also show concern for the environment as well as other users of the area. The misuse of motor vehicles can lead to the temporary or permanent closure of any designated road, trail, or area. As a motor vehicle operator, you are also subject to traffic law, including State requirements for licensing, insurance, and operation of the vehicle in question.

Motor vehicle use, especially off-highway vehicle use, poses inherent risks that may cause property damage, personal injury, and possibly death to participants. Drive responsibly and anticipate rough surfaces and hazards, such as snow, mud, vegetation, and water crossings common to off-road driving conditions. As your participation, you are primarily assume full responsibility for these dangers, accidents, and damages. Take care at all times to protect yourself and those under your responsibility.

Much of the Lake Tahoe Basin Management Unit is in a remote area. Medical assistance may not be readily available. Law enforcement does not work in many areas of the Lake Tahoe Basin Management Unit. Take adequate food, water, and supplies, and other equipment appropriate for the terrain and expected weather.

ALWAYS REMEMBER TO RESPECT PRIVATE LAND! RESPECT YOUR PRIVILEGE. STAY ON DESIGNATED ROADS AND TRAILS AND IN DESIGNATED AREAS.

Read and understand this map in its entirety. If you have questions please contact the Lake Tahoe Basin Management Unit for clarification.

As a motor vehicle operator on a National Forest System road, trail, or area, you must comply with this map, as well as applicable Federal, State, and local laws and regulations. Compliance with these rules is your responsibility.

VICINITY MAP

INFORMATION SOURCES

Lake Tahoe Basin Management Unit
 25 Collage Drive
 South Lake Tahoe, CA 96150
 (530) 543-2020; (530) 543-0956 (TTY)
<http://www.usda.gov/brmu>

North Shore LTRMU Office
 855 Alder Ave.
 Incline Village, NV 89451
 (775) 661-0914
 Open Thursday - Saturday

Taylor Creek Visitor Center
 (530) 543-2674
 Open June through October

PROHIBITIONS

Prohibited on roads and trails unless otherwise posted. Motor vehicles are prohibited on roads and trails on the Lake Tahoe Basin Management Unit except in accordance with these regulations (36 CFR 261.13).

Trailers of 36 CFR 261.13 are subject to a limit of up to 600 lbs. maximum weight for up to 6 months, or both the U.S.C. (a). This prohibition applies regardless of the presence or absence of a sign.

This map does not display nonmotorized uses, over snow, or other facilities and attractions on the Lake Tahoe Basin Management Unit. Contact forest visitor information from local national forest office.

Designated roads, trails, and areas may also be subject to temporary, emergency closures. As a visitor, you must comply with signs notifying you of such restrictions. A national forest road is closed or closed a road, trail, or area on a temporary basis to protect the life, health or safety of forest users or the natural or cultural resources in those areas. A temporary and/or emergency closure are consistent with the Travel Management Rule (36 CFR 212.52 (b), 36 CFR 261.52 (b)).

The designation "road or trail open to all motor vehicles" does not supersede State traffic law.

Area Number	Legend	Seasonal/Special Designation	Start Date	End Date	Start Mile	End Mile
1110	Highway, U.S. State	Seasonal	06/15	09/30	0.000	0.000
1111	Highway, U.S. State	Seasonal	06/15	09/30	0.000	0.000
1112	Highway, U.S. State	Seasonal	06/15	09/30	0.000	0.000
1001	Highway, U.S. State	Seasonal	06/15	09/30	0.000	0.000
1002	Highway, U.S. State	Seasonal	06/15	09/30	0.000	0.000
1003	Highway, U.S. State	Seasonal	06/15	09/30	0.000	0.000
1004	Highway, U.S. State	Seasonal	06/15	09/30	0.000	0.000
1005	Highway, U.S. State	Seasonal	06/15	09/30	0.000	0.000
1006	Highway, U.S. State	Seasonal	06/15	09/30	0.000	0.000
1007	Highway, U.S. State	Seasonal	06/15	09/30	0.000	0.000
1008	Highway, U.S. State	Seasonal	06/15	09/30	0.000	0.000
1009	Highway, U.S. State	Seasonal	06/15	09/30	0.000	0.000
1010	Highway, U.S. State	Seasonal	06/15	09/30	0.000	0.000
1011	Highway, U.S. State	Seasonal	06/15	09/30	0.000	0.000
1012	Highway, U.S. State	Seasonal	06/15	09/30	0.000	0.000
1013	Highway, U.S. State	Seasonal	06/15	09/30	0.000	0.000
1014	Highway, U.S. State	Seasonal	06/15	09/30	0.000	0.000
1015	Highway, U.S. State	Seasonal	06/15	09/30	0.000	0.000
1016	Highway, U.S. State	Seasonal	06/15	09/30	0.000	0.000
1017	Highway, U.S. State	Seasonal	06/15	09/30	0.000	0.000
1018	Highway, U.S. State	Seasonal	06/15	09/30	0.000	0.000
1019	Highway, U.S. State	Seasonal	06/15	09/30	0.000	0.000
1020	Highway, U.S. State	Seasonal	06/15	09/30	0.000	0.000
1021	Highway, U.S. State	Seasonal	06/15	09/30	0.000	0.000
1022	Highway, U.S. State	Seasonal	06/15	09/30	0.000	0.000
1023	Highway, U.S. State	Seasonal	06/15	09/30	0.000	0.000
1024	Highway, U.S. State	Seasonal	06/15	09/30	0.000	0.000
1025	Highway, U.S. State	Seasonal	06/15	09/30	0.000	0.000
1026	Highway, U.S. State	Seasonal	06/15	09/30	0.000	0.000
1027	Highway, U.S. State	Seasonal	06/15	09/30	0.000	0.000
1028	Highway, U.S. State	Seasonal	06/15	09/30	0.000	0.000
1029	Highway, U.S. State	Seasonal	06/15	09/30	0.000	0.000
1030	Highway, U.S. State	Seasonal	06/15	09/30	0.000	0.000
1031	Highway, U.S. State	Seasonal	06/15	09/30	0.000	0.000
1032	Highway, U.S. State	Seasonal	06/15	09/30	0.000	0.000
1033	Highway, U.S. State	Seasonal	06/15	09/30	0.000	0.000
1034	Highway, U.S. State	Seasonal	06/15	09/30	0.000	0.000
1035	Highway, U.S. State	Seasonal	06/15	09/30	0.000	0.000
1036	Highway, U.S. State	Seasonal	06/15	09/30	0.000	0.000
1037	Highway, U.S. State	Seasonal	06/15	09/30	0.000	0.000
1038	Highway, U.S. State	Seasonal	06/15	09/30	0.000	0.000
1039	Highway, U.S. State	Seasonal	06/15	09/30	0.000	0.000
1040	Highway, U.S. State	Seasonal	06/15	09/30	0.000	0.000
1041	Highway, U.S. State	Seasonal	06/15	09/30	0.000	0.000
1042	Highway, U.S. State	Seasonal	06/15	09/30	0.000	0.000
1043	Highway, U.S. State	Seasonal	06/15	09/30	0.000	0.000
1044	Highway, U.S. State	Seasonal	06/15	09/30	0.000	0.000
1045	Highway, U.S. State	Seasonal	06/15	09/30	0.000	0.000
1046	Highway, U.S. State	Seasonal	06/15	09/30	0.000	0.000
1047	Highway, U.S. State	Seasonal	06/15	09/30	0.000	0.000
1048	Highway, U.S. State	Seasonal	06/15	09/30	0.000	0.000
1049	Highway, U.S. State	Seasonal	06/15	09/30	0.000	0.000
1050	Highway, U.S. State	Seasonal	06/15	09/30	0.000	0.000
1051	Highway, U.S. State	Seasonal	06/15	09/30	0.000	0.000
1052	Highway, U.S. State	Seasonal	06/15	09/30	0.000	0.000
1053	Highway, U.S. State	Seasonal	06/15	09/30	0.000	0.000
1054	Highway, U.S. State	Seasonal	06/15	09/30	0.000	0.000
1055	Highway, U.S. State	Seasonal	06/15	09/30	0.000	0.000
1056	Highway, U.S. State	Seasonal	06/15	09/30	0.000	0.000
1057	Highway, U.S. State	Seasonal	06/15	09/30	0.000	0.000
1058	Highway, U.S. State	Seasonal	06/15	09/30	0.000	0.000
1059	Highway, U.S. State	Seasonal	06/15	09/30	0.000	0.000
1060	Highway, U.S. State	Seasonal	06/15	09/30	0.000	0.000
1061	Highway, U.S. State	Seasonal	06/15	09/30	0.000	0.000
1062	Highway, U.S. State	Seasonal	06/15	09/30	0.000	0.000
1063	Highway, U.S. State	Seasonal	06/15	09/30	0.000	0.000
1064	Highway, U.S. State	Seasonal	06/15	09/30	0.000	0.000
1065	Highway, U.S. State	Seasonal	06/15	09/30	0.000	0.000
1066	Highway, U.S. State	Seasonal	06/15	09/30	0.000	0.000
1067	Highway, U.S. State	Seasonal	06/15	09/30	0.000	0.000
1068	Highway, U.S. State	Seasonal	06/15	09/30	0.000	0.000
1069	Highway, U.S. State	Seasonal	06/15	09/30	0.000	0.000
1070	Highway, U.S. State	Seasonal	06/15	09/30	0.000	0.000
1071	Highway, U.S. State	Seasonal	06/15	09/30	0.000	0.000
1072	Highway, U.S. State	Seasonal	06/15	09/30	0.000	0.000
1073	Highway, U.S. State	Seasonal	06/15	09/30	0.000	0.000
1074	Highway, U.S. State	Seasonal	06/15	09/30	0.000	0.000
1075	Highway, U.S. State	Seasonal	06/15	09/30	0.000	0.000
1076	Highway, U.S. State	Seasonal	06/15	09/30	0.000	0.000
1077	Highway, U.S. State	Seasonal	06/15	09/30	0.000	0.000
1078	Highway, U.S. State	Seasonal	06/15	09/30	0.000	0.000
1079	Highway, U.S. State	Seasonal	06/15	09/30	0.000	0.000
1080	Highway, U.S. State	Seasonal	06/15	09/30	0.000	0.000
1081	Highway, U.S. State	Seasonal	06/15	09/30	0.000	0.000
1082	Highway, U.S. State	Seasonal	06/15	09/30	0.000	0.000
1083	Highway, U.S. State	Seasonal	06/15	09/30	0.000	0.000
1084	Highway, U.S. State	Seasonal	06/15	09/30	0.000	0.000
1085	Highway, U.S. State	Seasonal	06/15	09/30	0.000	0.000
1086	Highway, U.S. State	Seasonal	06/15	09/30	0.000	0.000
1087	Highway, U.S. State	Seasonal	06/15	09/30	0.000	0.000
1088	Highway, U.S. State	Seasonal	06/15	09/30	0.000	0.000
1089	Highway, U.S. State	Seasonal	06/15	09/30	0.000	0.000
1090	Highway, U.S. State	Seasonal	06/15	09/30	0.000	0.000
1091	Highway, U.S. State	Seasonal	06/15	09/30	0.000	0.000
1092	Highway, U.S. State	Seasonal	06/15	09/30	0.000	0.000
1093	Highway, U.S. State	Seasonal	06/15	09/30	0.000	0.000
1094	Highway, U.S. State	Seasonal	06/15	09/30	0.000	0.000
1095	Highway, U.S. State	Seasonal	06/15	09/30	0.000	0.000
1096	Highway, U.S. State	Seasonal	06/15	09/30	0.000	0.000
1097	Highway, U.S. State	Seasonal	06/15	09/30	0.000	0.000
1098	Highway, U.S. State	Seasonal	06/15	09/30	0.000	0.000
1099	Highway, U.S. State	Seasonal	06/15	09/30	0.000	0.000
1100	Highway, U.S. State	Seasonal	06/15	09/30	0.000	0.000
1101	Highway, U.S. State	Seasonal	06/15	09/30	0.000	0.000
1102	Highway, U.S. State	Seasonal	06/15	09/30	0.000	0.000
1103	Highway, U.S. State	Seasonal	06/15	09/30	0.000	0.000
1104	Highway, U.S. State	Seasonal	06/15	09/30	0.000	0.000
1105	Highway, U.S. State	Seasonal	06/15	09/30	0.000	0.000
1106	Highway, U.S. State	Seasonal	06/15	09/30	0.000	0.000
1107	Highway, U.S. State	Seasonal	06/15	09/30	0.000	0.000
1108	Highway, U.S. State	Seasonal	06/15	09/30	0.000	0.000
1109	Highway, U.S. State	Seasonal	06/15	09/30	0.000	0.000
1110	Highway, U.S. State	Seasonal	06/15	09/30	0.000	0.000
1111	Highway, U.S. State	Seasonal	06/15	09/30	0.000	0.000
1112	Highway, U.S. State	Seasonal	06/15	09/30	0.000	0.000
1113	Highway, U.S. State	Seasonal	06/15	09/30	0.000	0.000
1114	Highway, U.S. State	Seasonal	06/15	09/30	0.000	0.000
1115	Highway, U.S. State	Seasonal	06/15	09/30	0.000	0.000
1116	Highway, U.S. State	Seasonal	06/15	09/30	0.000	0.000
1117	Highway, U.S. State	Seasonal	06/15	09/30	0.000	0.000
1118	Highway, U.S. State	Seasonal	06/15	09/30	0.000	0.000
1119	Highway, U.S. State	Seasonal	06/15	09/30	0.000	0.000
1120	Highway, U.S. State	Seasonal	06/15	09/30	0.000	0.000
1121	Highway, U.S. State	Seasonal	06/15	09/30	0.000	0.000
1122	Highway, U.S. State	Seasonal	06/15	09/30	0.000	0.000
1123	Highway, U.S. State	Seasonal	06/15	09/30	0.000	0.000
1124	Highway, U.S. State	Seasonal	06/15	09/30	0.000	0.000
1125	Highway, U.S. State	Seasonal	06/15	09/30	0.000	0.000
1126	Highway, U.S. State	Seasonal	06/15	09/30	0.000	0.000
1127	Highway, U.S. State	Seasonal	06/15	09/30	0.000	0.000
1128	Highway, U.S. State	Seasonal	06/15	09/30	0.000	0.000
1129	Highway, U.S. State	Seasonal	06/15	09/30	0.000	0.000
1130	Highway, U.S. State	Seasonal	06/15	09/30	0.000	0.000
1131	Highway, U.S. State	Seasonal	06/15	09/30	0.000	0.000
1132	Highway, U.S. State	Seasonal	06/15	09/30	0.000	0.000
1133	Highway, U.S. State	Seasonal	06/15	09/30	0.000	0.000
1134	Highway, U.S. State	Seasonal	06/15	09/30	0.000	0.000
1135	Highway, U.S. State	Seasonal	06/15			

THANKS!

