



The California Native Garden

Native Landscaping and
Maintaining Wildlife Habitat!

Presented by Rob Moore

January 4, 2013

Overview

- Origins of the wildlife friendly garden
- Reasons to use California native plants in suburban landscapes
- Design techniques for creating your own native garden
- Bird & butterfly species and the California native plants that attract them

My Story



Life in the Backcountry...



Life in the Backcountry...



Life in the backcountry...



A New Beginning!

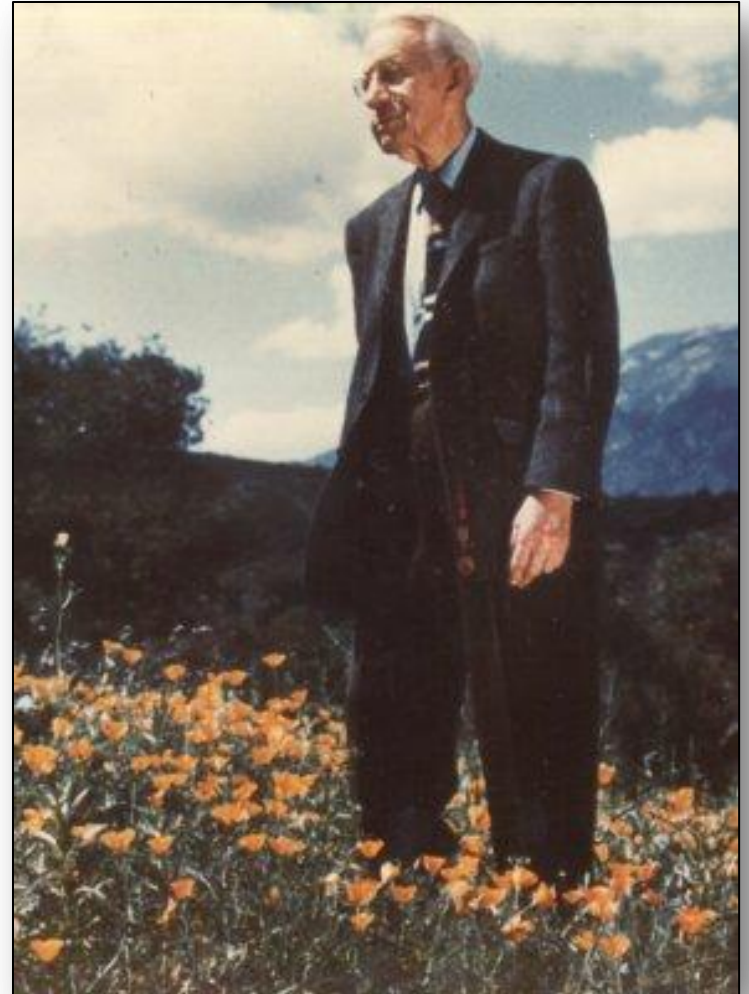


California Native Landscape Design



Making a Case for Designing California Native Gardens

- Father of the modern day California native plant movement
- Display of California native plants at The Royal Botanical Gardens at Kew in England in 1891
- A lesson learned from history



Why Use Native Plants?



- Low Maintenance
- Native gardens *do* require attention, but with significantly less water, fertilizers, pesticides, valuable time, and energy

Why Use Native Plants?

- Water savings
- Saving water conserves vital resources *and* money
- Statistics show the typical landscape accounts for 60% of household's water consumption



Irrigation



- Irrigate per micro-climate requirements
- Irrigate deeply and infrequently during summer and early fall
- Manual, Low flow micro-spray, and mp rotors
- Keep your garden 'lightly hydrated'

Supporting Local Ecology

- Plant native vegetation to balance development
- Provide extensions to nearby natural ecosystems
- Plants, birds, butterflies, and beneficial insects have a symbiotic relationship
- Insect pollinators can improve fruit set in your garden



Dispelling Misnomers



- California native plants are easy to find
- Perform well in Suburban gardens
- Adaptable to soil and micro-climate variations
- Perfectly suited for use in the suburban garden
- Many evergreen varieties are readily available

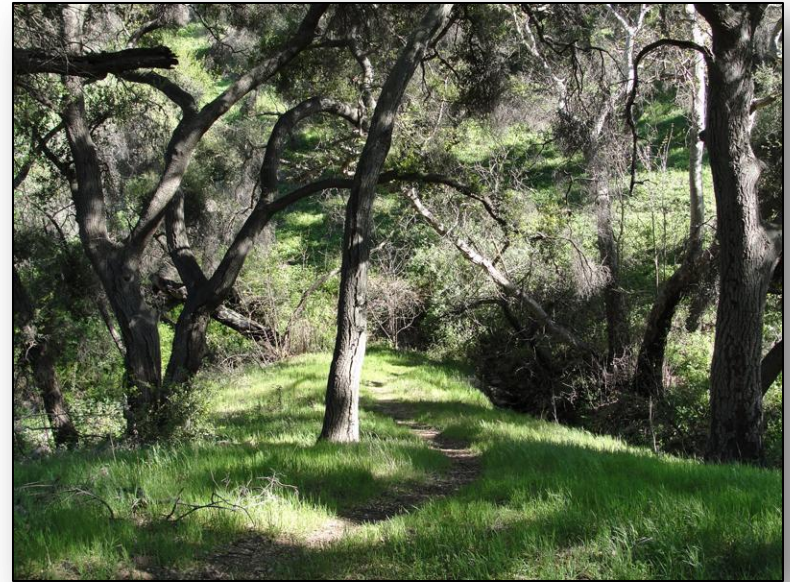
Designing the Native Garden

- Coastal Sage Scrub plant community



Designing the Native Garden

- Southern Oak Woodland plant community



Designing the Native Garden

- Chaparral



Designing the Native Garden

- Look for native plant volunteers in ornamental landscapes



Designing the Native Garden

- Plant Communities by Zip code



The screenshot shows the website for California Native Landscape Design. The header features a logo with a stylized bird and the text 'California Native Landscape Design'. Below the header is a navigation menu with links for Home, My Story, Philosophy, Gallery, Testimonials, and Contact. The main content area is titled 'California Native Landscape Design' and 'California Plant Communities By Zipcode'. It includes a paragraph explaining that California Native Plant Communities are the starting point for landscape design, followed by a paragraph about identifying native plants and a photograph of a natural landscape. A list of zip codes and their corresponding plant communities is provided at the bottom. On the right side, there is a 'Download Your Free Report' form with fields for Name and E-mail, and a Submit button.

California Native Landscape Design
California Plant Communities By Zipcode

California Native Plant Communities are the starting point from which you begin the plant selection phase of your landscape design.

When choosing native plants for your garden the key is to identify and recreate—or at least emulate the natural ecosystem that existed (or hopefully still does) in your area prior to your home being built.

Identify your Zip Code and city, then click the corresponding links below for a list of plants specifically adapted to your particular California Native Plant Community.

[Chaparral](#) [Southern Oak Woodland](#) [Coastal Sage Scrub](#) [Yellow Pine Forest](#)

92001 Alpine CHAP Chaparral
92001 Alpine SOW Southern Oak Woodland
92001 Alpine YEL Yellow Pine Forest
92002 Bonita CSCR Coastal Sage Scrub
92003 Bonsall CSCR Coastal Sage Scrub
92004 Borrego Springs CREO Creosote Bush Scrub
92005 Boulevard CHAP Chaparral
92006 Campo CHAP Chaparral
92007 Cardiff By the Sea CSCR Coastal Sage Scrub

Download Your Free Report
Enter your name and email to receive your monthly tips & insights
Name:
E-mail:

Plant Examples



- Coastal sage scrub plants that attract pollinators and look great

Plant Examples



- Coastal sage scrub plants that attract birds and look great

Plant Examples



- Coastal sage scrub plants that attract pollinators and look great

Plant Examples



- Coastal sage scrub plants that attract pollinators and look great

Plant Examples



- Coastal sage scrub plants that attract pollinators and look great

Deadwood & Snags



- Create habitat and natural garden beauty

Deadwood & Snags

- Provides critical habitat for many different species



Deadwood & Snags

- Snags provide food, shelter, and nesting places for birds and other garden-friendly critters



Deadwood & Snags

- Double as natural garden sculpture and/or art



Water as an Element

- Crucial element in the habitat-friendly garden



Attracting Butterflies



- Host plants provides food for butterfly larvae
- Nectar plants provide a food source for adult butterflies

Attracting Butterflies



- Native and migratory butterfly species that pass through your area

Attracting Butterflies



- *Salvia mellifera* Black Sage

Attracting Butterflies



- Chia *Salvia columbariae*

Attracting Butterflies



- Monkey flower *Mimulus* spp.

Attracting Butterflies



- *Eriodictyon crassifolium*
Yerba Santa attracts
Chalcedon Checkerspot
butterflies

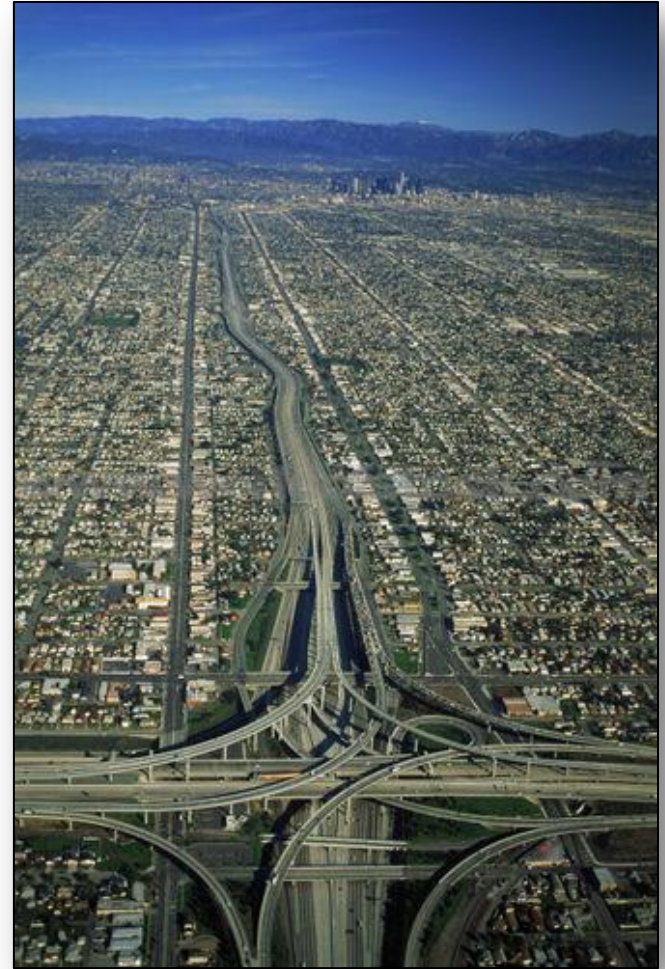
Attracting Butterflies



- Monarch butterfly is famous for its annual migrations and winter stay-over's at places like Pacifica along the California coast

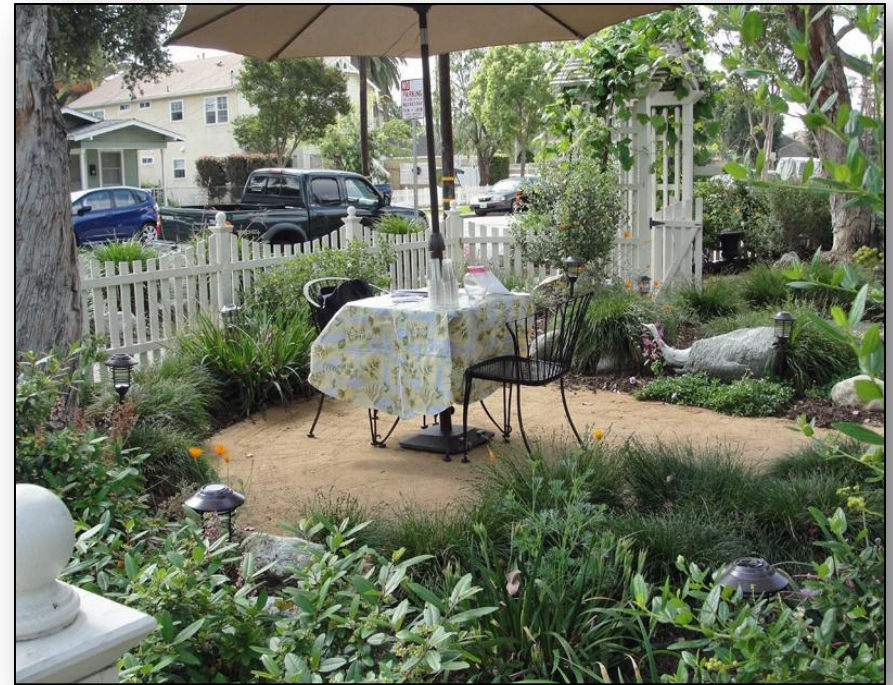
Becoming Stewards of our Environment

- We as individuals can contribute to a better world simply by changing our gardening practices



Becoming Stewards of our Environment

- A California native garden has much more to offer than mere esthetics



Becoming Stewards of our Environment

- Choose to become a part of the solution



Resources

- A list of plants that naturally attract California Birds to your garden
<http://www.laspilitas.com/bird.htm>
- Plants for a California or Western Butterfly Garden
<http://www.laspilitas.com/butterfl.htm>
- Butterflies of Orange County and their food plants
<http://nathistoc.bio.uci.edu/bflyplnt.htm>

