

What's Growing On



University of California

Agriculture and Natural Resources | Master Gardener Program

Inside this issue:

- Cool Tools—Save Our Water Site [2](#)
- MG Spotlight—Kathy Grant [2](#)
- Invasive Pest Workshop [3](#)
- Permaculture Zones [4](#)
- Statewide MG Conference [6](#)
- MG Spotlight—Rich Mullenbach [6](#)
- Social Media Outreach [7](#)
- Propagating Indoor Plants [8](#)
- Bee Labels [10](#)
- MG Samples [12](#)
- Pesticide Info [13](#)
- HW & Onsite [14](#)

Volume II, Issue I

January/February 2014

Thank You!

As we begin a new calendar year I want to say "Thank You" to all the MGs that devote their time, knowledge, expertise and energy to the Master Gardener Program. I can actually say that I enjoy my job. I enjoy the people I get to work with and all the volunteers that make this program what it is. I enjoy all the projects that we are involved in and the outreach that we provide to the community. I ran across this garden quote and thought it was fitting for our Master Gardeners. I am fortunate to have a group of volunteers that are like a second family to me. I learn so much from all of you and appreciate everything you have to give. I look forward to what 2013 has in store for us. Thank you for being such wonderful and dedicated volunteers!

~Marcy~



Volunteer Hours—Are you on track?

Recertification is still a few months away, but it's a good time to take a look at your hours to make sure you are on track to completing them and that you are caught up on hours that you may "owe" from prior years. It's also important to remember to log your hours on a regular basis. As a group we are getting close to 25,000 volunteer hours within the county. Once we reach this milestone I'd like to go before the Board of Supervisors and give them a presentation about our program since it's been several years since we have presented anything to them. Take a look at the table below to see how many hours and CE units you should have completed by June 30th, 2014 based off your graduation year.

2007	200 volunteer hours	84 CE
2008	175 volunteer hours	72 CE
2009	150 volunteer hours	60 CE
2011	100 volunteer hours	36 CE
2013	50 volunteer hours	12 CE



What is wrong with these tomatoes? Find the answer on page 7

FACT: If every U.S. homeowner with an automatic sprinkler system installed and properly operated a smart controller, we would save roughly 120 billion gallons of water annually from not overwatering lawns and landscapes. That's equal to the annual household water needs of nearly 1.3 million average American homes.

*From the Save our Water site



Cool Tools: Save Our Water Website

Saving water at home can be easy. The ['Save Our Water'](#) website provides simple tools and tricks to conserve water. The ['Sprinklers 101'](#) section really has some great resources for homeowners. Here are a few that you can find:



Water-wise landscaping Basics—Includes links and helpful tips in creating a water-wise landscape.

Improving an Existing sprinkler System—Include 'How-To' videos from major irrigation companies.

Drip Irrigation Resources—Includes design, installation guides and how to guides.

Manuals & More—Includes manuals for controllers, sprinklers and valves from major companies

Installing a New System—Includes glossaries of commonly used irrigation terms and links to websites that assist in the design process.

Another tool that can be found on the Save Our Water website is the [Water Use Calculator](#). Use this simple calculator to find your average annual water use and learn ways to save.

MG Spotlight—Kathy Grant 2009

Kathy came to California from New Jersey in the 1970s to attend UC Davis where she met her current husband, Joe. They lived at the Agrarian Effort, an on campus living co-op, which included 1/4 acre of garden. They grew most of what they ate, baked their own bread, etc. This household was responsible for starting the Davis Food Coop and the Davis Farmers Market. She worked

at the DFM for many years until we moved to Lodi. She has 4 children and 4 grandchildren. She hates watching sports and would prefer a good walk. Kathy loves time with friends, long walks, arboretums, museums, and good food, a glass of good wine, especially homemade! She enjoys harvesting and weeding the most. "My husband is the alpha gardener and does the rest. I enjoy

gathering up for dinner what my husband has planted, and also enjoy weeding...which is like treasure hunting. I love the look of neat and tidy vegetable beds." She is currently involved in currently working with the MG Steering Committee and the Downtown Lodi Riverfriendly Demo Garden, as well as the Lodi Community Garden Committee.

First Detector Program



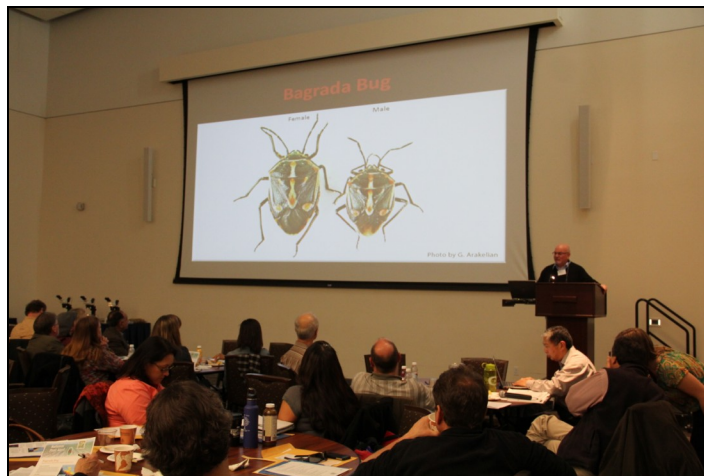
The National Plant Diagnostic Network (NPDN) First Detector program promotes the early detection of invasive, exotic plant pathogens, arthropods, nematodes, and weeds.

You can become a First Detector by completing a self-paced online training where you will become familiar with some national and/or local pests of concern and are able to monitor for high risk pests.

For more information, [click here.](#)

Current Issues in Invasive/Emerging Pests & Diseases

On February 5th a group of SJ Master Gardeners and myself attended an all day training on invasive and emerging pests and diseases. The audience was comprised of Master Gardeners, local farmers, Pest control applicators and many others. We had an employee of Heinz at our table learning about these potential threats. The presentations were about 20 minutes each which allowed each speaker to give a brief overview of the pest, damage its currently causing, location within California and what is being done (if anything) to control it. You can view the PowerPoints by [clicking here](#). Keep in mind that these were used as talking points and that each presenter had a lot of information to go along with it that is not included in the presentations. It was interesting to see how these pests are spreading throughout the state and locations they are showing up. Many originate in Southern CA (coming in from the ports or across the border) and are moving upward showing up in cities



Bagrada Bug—Female is on the left, male on the right.

that run along Hwy. 99 and I-5. The Brown Marmorated Stink Bug is starting to spread from the Sacramento area to outlying cities (Elk Grove and Citrus Heights) and everywhere they have found it the common denominator is the people all work or have been to midtown Sacramento.

For more information from the UC IPM program on the pests we covered, click on the pests/diseases listed below.

- [Bagrada Bug](#)
- [Brown Marmorated Stink Bug](#)
- [Light Brown Apple Moth](#)
- [Thousand Cankers of Walnuts](#)
- [Asian Citrus Psyllid/HLB](#)
- [Polyphagous Shot Hole Borer](#)
- [Plum Pox Virus](#)
- [Red Blotch of Grapes](#)
- [Sudden Oak Death](#)

A Zone of One's Own— Toby Hemenway

How many times have you seen a vegetable garden tucked away in the back of a yard, choked with weeds and lurking with unharvested zucchini the size of baseball bats? Instead of being outside the kitchen window where those weeds and past-due vegetables would alert someone washing dishes, the garden has been hidden. And since it's not on the way to anywhere, visiting the garden means a dedicated journey, not a casual stopping by. It's in the wrong place.

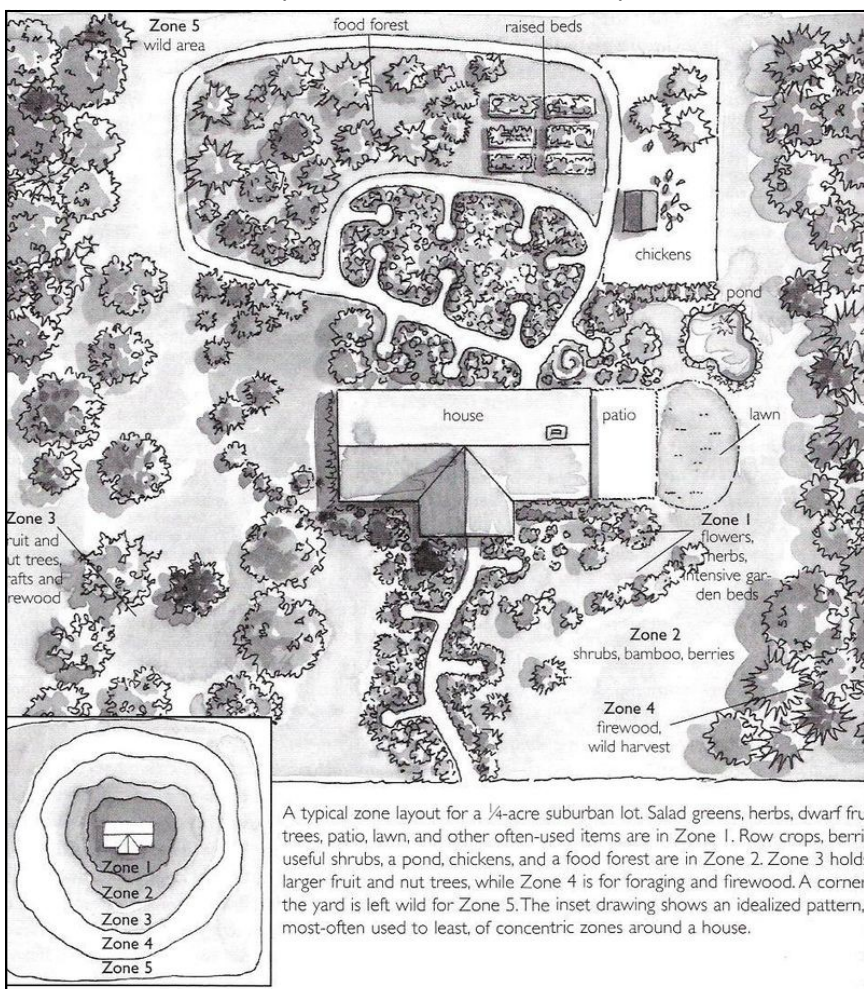
Here's an indoor example of the same problem. You get a craving for a steaming café latte. But the cappuccino machine is in a cupboard high above the fridge, stashed behind the turkey roaster and fondue pot. Excavating it is a little too much work, so you abandon your decadent impulse and just grind some beans for the Krups on the counter.

Those small energetic hurdles are just enough to keep us from fully enjoying the things around us. Proper placement is integral to good design. Even if we're not professional designers, we're constantly arranging our living environment, from furniture to desk drawers to flower beds. Knowing a few simple principles to guide what goes where can save time, resources, and energy, and help us do more with our day.

You don't need an architecture degree to learn how to put things in the best place. From permaculture comes a simple method of proper placement called the Zone System. It works at almost any scale: in landscape layout, in the home or office,

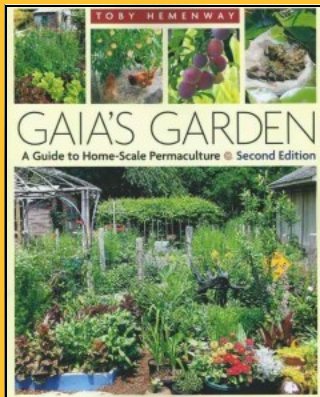
even for arranging a desktop or kitchen cupboard. The cardinal rule of the Zone System is to place the items you use the most, or that need the most frequent care, closest to you. The gourmet will want a mesclun bed and herbs by the kitchen door, and baby carrots not much farther away. The "Come on over after work" type will give the patio pride of place. Whether it's a salad bed, favorite ornamental shrub, cozy porch swing, or your personal miniature golf course, what you enjoy most goes right outside the door. If it's farther, you simply won't use it as often.

The key to using zones is: Rather than thinking of objects in static classes—pots, chairs, trees—think of how you interact with them: at every meal, when you sort the mail, on sunny weekends. Then, the right location will become clear.



A typical zone layout for a 1/4-acre suburban lot. Salad greens, herbs, dwarf fruit trees, patio, lawn, and other often-used items are in Zone 1. Row crops, berry useful shrubs, a pond, chickens, and a food forest are in Zone 2. Zone 3 holds larger fruit and nut trees, while Zone 4 is for foraging and firewood. A corner the yard is left wild for Zone 5. The inset drawing shows an idealized pattern, most-often used to least, of concentric zones around a house.

A Zone of One's Own (continued from page 4)



Toby Hemmenway is the author of *Gaia's Garden: A Guide to Home-Scale Permaculture*

Did you know... You can hover your mouse over anything that is blue and underlined and by clicking on it you will be directed to a webpage with more information about that subject! Try it!!



To understand zones, imagine the whole space you're working with as being overlain with a set of concentric circles. Where you are based is Zone Zero, and radiating outward are Zones One through Five. For example, if you're designing a landscape, Zone Zero is the house, your base. Zone One, where oft-used items should go, is a roughly circular area within about twenty feet of the house. I say roughly because the vagaries of topography and hardscape will distort that circle. A steep hill, even if it's near the house, won't get much use. And a well-worn path to the garage or mailbox will be in Zone One, but a walkway from a rarely opened side door might be in Zone Two.

Larry Santoyo, an ecological designer in San Luis Obispo, California, is savvy about zones. He tells his clients, "Put your garden somewhere between your front door and your car door." When you get home from work, you can pluck a dinner's worth of greens and cherry tomatoes while walking in from the car. Saving a second trip outside means you'll be more likely to dine on fresh greens than on that frozen dinner in the fridge.

That refrigerator itself should be in the kitchen's Zone One. Since the 1950s, interior designers have endorsed the "kitchen triangle" for efficient layout: The refrigerator, stove, and sink should form a triangle whose sides total less than 26 feet. This triangle defines the kitchen's Zone One. Kitchen tools you use often should lie within the triangle. Whether those tools be microwave, Cuisinart, or mortar-and-pestle depends on your personal cooking style.

Less needed items can be stored farther away. Many people keep odd-ball bakeware behind the everyday pans (in the kitchen's Zone Two), and formal dishes in a hard-to-reach upper cabinet (Zone Three), with this system culminating in those old cans of pumpkin pie mix in the back pantry (which in our house is truly a wilderness area, or Zone Five). These aren't new kitchen ideas, but placing those often unconscious decisions within the zone framework lets us be systematic and efficient.

Zones help us place the pieces of our design in optimal relationship with each other and with ourselves. They allow us to weave order not by static categories, but by how often we use or need to care for something. Well-planned zones save steps and time, make it easy to keep up with both tasks and play, and truly personalize a home and landscape.

*This article was adapted from Pattern Literacy. To view the full article, [click here](#).

** Marcy's note: Zones 4 & 5 may not apply to typical backyard landscapes but the idea and concept is still helpful to keep in mind when planning your vegetable garden or figuring out where to put that compost pile.



2014 Statewide MG Conference



Tenaya Lodge at Fish Camp

The Statewide Master Gardener Conference will be October 7-10th at the Tenaya Lodge outside of Yosemite. The theme is

“Growing Together.” The statewide MG conference only happens once every 3 years. Registration will be opening in early March.

The conference committee has been doing everything possible to get the

price as low as possible, unfortunately the lodge is a pricier place in general. Fees will not be released until registration opens to ensure they have every We have a few scholarships set aside for our MGs to apply for to attend the conference.

Solid Waste has **GENEROUSLY** set aside scholarship money for at least 10 master gardeners to attend the conference. All of the scholarships cover registration costs. Lodging, travel and any other expenses (tours, items

purchased at the store, etc) will be up to the MG to cover. You will be able to share a room (some hold up to 4 people) and if you would like to stay outside of the lodge you can, you’ll just have to drive back and forth.

The class schedules are starting to go up online as well as other conference information like the keynote speakers.. To apply for a scholarship, [click here](#). To view the Conference Website, [click here](#).

MG Spotlight—Rich Mullenbach 2013



Rich grew up in Minnesota. His wife is a nutritionist and her encouragement of eating fruit and veggies supports the need to have fresh produce from the garden. They have one son, who lives and works in Seattle. Rich worked as a Financial Operations Manager for General Mills in Lodi, retiring in 2012. Besides the time he spends gardening, Rich is a board member (treasure) for the World of Wonders

science museum in Lodi. He enjoys hiking, and canoeing in northern Minnesota boundary waters, where they own a log cabin on a lake.

Rich enjoys developing an edible landscape. “I have two goals for my back yard garden, 1.) to have something to harvest each month & 2.) to harvest a half ton of produce each year.” He enjoys growing fruit, particular kiwi. “I have grown kiwi from

seed that I’ve harvested from kiwi varieties from New Zealand and Italy. I have a number of plants so if anyone would like to try their luck with kiwi I would be happy to share. You need to have patience it takes 3 years before you will know if you have a winner.”

His current involvement in the MG program is working on the edible landscape section of the demo garden.

Social Media—Facebook, Blogs & Pinterest... Oh My!

Our program is always looking for new ways to connect with people in our community and recently we entered a whole new world... social media. We have had a Facebook page for quite a while now and it is starting to grow in “likes” or followers.

Recently, I started a Master Gardener Pinterest page. There is lots of information or “pins” and we are already getting followers. Rather than pinning random things I find on Pinterest, I’m using this like a website where the links will take you back to pages like the UC IPM page or Backyard Orchard website. We will be able to gather statistics to see what people are interested in. If you have a Pinterest account and have a subject you would like to contribute “pins” to let me know and I can add you as a user.



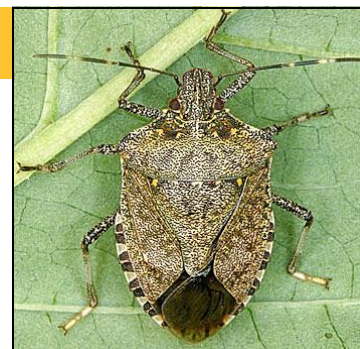
Hopefully in early March the Master Gardener Blog will be live. This is a partnership with the Stockton Record and our blogs will appear on their website. With these articles we will also start a UC Master Gardener blog that we can feed into our county website. I will let everyone know when it is active.

Lastly, I’m always trying to keep up with our website and recently I have created a whole new section related to water conservation. It’s a topic that has been needed for a while on our site and it’s now up and running. Next on my list is to add a community garden page to our website and create a separate website for the demonstration garden. Click on the pictures below to visit the corresponding pages.



What’s Wrong Answer

The tomatoes in this picture are suffering from stink bug damage, specifically the [brown marmorated stink bug](#), *Halyomorpha halys*, pictured right. Stink bugs attack a variety of fruits and vegetables from stone fruits to pears to beans to tomatoes, often leaving blemishes, depressions, or brown drops of excrement. Adults and nymphs suck juices from fruit and seeds, creating pockmarks and distortions that make fruit and vegetables unmarketable. Damaged flesh under the skin turns hard and pithy. Areas beneath spots on tomatoes or depressed areas on pears become white and pithy but remain firm as the fruit ripens. On peaches, fruit turns brown and corky.



Solutions: Handpick bugs or their eggs. Eliminate groundcovers or weedy areas in early spring before populations build up. Insecticides are generally not recommended in gardens for stink bugs. [Parasites](#) and [general predators](#) may contribute to control.



Propagating Houseplants

Better Homes and Garden

You can enlarge your houseplant collection inexpensively by propagating the plants you already have. The growing tips of many plants will produce vigorous new plants when cut and rooted properly.

How to Propagate

1. **To propagate new plants from most multistemmed houseplants**, try rooting tip cuttings. First, cut 4 to 6 inches from the tip of the main stem or side branch. Cut just below a node (where leaf and stem meet).
2. **Remove the lower leaves and any flowers.** Dust cut ends with rooting hormone powder, then plant in moist rooting medium (half peat moss, half perlite works well); keep leaves above soil. Or, skip powder and place in water.
3. **Provide indirect light and bottom heat.** When cuttings resist tugs, they are taking root. Dig up gently, check root growth, and pot up. Move cuttings in water to another rooting medium as soon as roots sprout; pot up.



[Once you've propagated your plant, click here to learn how to use plant grow lights to keep it healthy.](#)



How to Divide Roots : Easily expand the number of plants in your home by dividing the ones you already have. Many houseplants produce several stems with roots attached to each stem. Each of these rooted stems can be divided from the parent houseplant to make a new plant. You can divide to make two or more plants from any that have multiple stems coming up from the soil surface. Pull or cut the plants apart. Each section must have a cluster of roots. Pot each section in fresh potting mix.

[Learn how to make your own potting mix.](#)

1. **To divide a multistemmed houseplant**, first remove the plant from its pot. Early spring generally is the best time to divide plants. Press your thumbs into the middle of the plant, grab the plant with both hands, and tug it apart. If this doesn't work, remove the soil and try again. If that fails, cut the plant with a knife.
2. **Keep a large clump of roots with each division.** Immediately pot the new plants in potting soil. Keep the soil evenly moist for the next few weeks to help heal the injured roots.
3. **Place plants out of direct light** until they start to grow. Move them into brighter light over a period of 10 days.

Cutting Top-Heavy Plants

Dieffenbachias and similar plants often lose lower leaves. When this happens, cut top off and propagate new plants.

Stem Cuttings : Cut plant about 15 inches below bottom leaf; root in water. Pot when roots form. Cut rest of stems into short lengths, each with a node. Place horizontally in moist medium, covering node with soil. New plants will emerge.

Leaf Cuttings African Violet : To propagate an African violet, take at least an inch of stem with each leaf. Insert the stems into water or a peat-based mix. Pot leaves that have been in water as soon as roots form. Pot others when roots are established.



Example: How to Propagate a Begonia—Rex Begonia : To propagate a rex begonia, set a healthy leaf, top side up, on moist growing medium. Sever a few of the veins. Pin the leaf down so the cuts come in contact with the medium. Keep moist. Pot the plantlets that grow from each cut.

Example: How to Propagate a Snake Plant : To propagate a snake plant, cut a leaf into sections; indicate with angled cuts which end is bottom. Dip bottom ends in rooting powder; insert in moist rooting medium. Pot new plants that form to sides of leaf sections.



Air Layering : 1. **Make an upward cut into the stem just below a node**, at a point where you'd like new roots to grow. Cut halfway through the stem. Place toothpick or matchstick into cut to keep it open. Dust area with rooting hormone powder. 2. **Place moist moss around the cut and secure it** with plastic. Wrap wire twists at top and bottom. Undo top; mist moss regularly. When roots are thick, cut stem several inches below original cut; pot.

Runners: Plants that send out aerial runners and form new plantlets are easy to propagate. When age takes its toll on a spider plant, it's time to root the plantlets and start over. Spider plants often become straggly. Their natural inclination is to produce new foliage and shed the old. To root plantlets that form on aerial runners, set pots filled with rooting medium nearby. Pin plantlets into medium with hairpins. Keep moist. Once plantlets root, sever stems to parent plant.

Propagating and Dividing Tips

- Bulb plants can be divided in a couple of ways. When a parent bulb produces small bulbs off to its side, simply divide the new bulbs from the old. Plant the new bulbs as you did the parent bulb.
- Some bulbs, such as achimenes, are made up of many scales that resemble pinecones. For new plants, pull off one of these scales, pot, and water.
- Caladium and tuberous begonia are among the houseplants that produce fat underground growths known as tubers. Cut the tubers into several pieces, making sure each division has an eye. Dust wounds with fungicide. Plant immediately.
- Gloxinia and cyclamen produce underground growth somewhat similar to potatoes. Cut sections containing at least one eye from these tubers, then pot. Each section will produce a new plant.

EPA Launches Bee-Protecting Pesticide Label



In an ongoing effort to protect bees and other pollinators, the U.S. Environmental Protection Agency (EPA) has developed new pesticide labels that prohibit use of some neonicotinoid pesticide products where bees are present.

“Multiple factors play a role in bee colony declines, including pesticides. The Environmental Protection Agency is taking action to protect bees from pesticide exposure and these label changes will further our efforts,” said Jim Jones, assistant administrator for the Office of Chemical Safety and Pollution Prevention.

The new labels will have a bee advisory box and icon with information on routes of exposure and spray drift precautions. Today’s announcement affects products containing the neonicotinoids imidacloprid, dinotefuran, clothianidin and thiamethoxam. The EPA will work with pesticide manufacturers to change labels so that they will meet the Federal Insecticide, Fungicide, and Rodenticide Act (FIFRA) safety standard.

In May 2013, the U.S. Department of Agriculture (USDA) and EPA released a comprehensive scientific report on honey bee health, showing scientific consensus that there are a complex set of stressors associated with honey bee declines, including loss of habitat, parasites and disease, genetics, poor nutrition and pesticide exposure.

The agency continues to work with beekeepers, growers, pesticide applicators, pesticide and seed companies, and federal and state agencies to reduce pesticide drift dust and advance best management practices. The EPA recently released new enforcement guidance to federal, state and tribal enforcement officials to enhance investigations of bee kill incidents.

More on the EPA’s label changes and pollinator protection efforts by [clicking here](#). View the infographic on EPA’s new bee advisory box by [clicking here](#).



APPLICATION RESTRICTIONS EXIST FOR THIS PRODUCT BECAUSE OF RISK TO BEES AND OTHER INSECT POLLINATORS. FOLLOW APPLICATION RESTRICTIONS FOUND IN THE DIRECTIONS FOR USE TO PROTECT POLLINATORS.



Look for the bee hazard icon in the Directions for Use for each application site for specific use restrictions and instructions to protect bees and other insect pollinators.

This product can kill bees and other insect pollinators.

**IF YOU HAVE
A GARDEN
AND A
LIBRARY
YOU HAVE EVERYTHING
YOU NEED.**

Are you reading this newsletter? Correctly fill out the survey for your chance to be entered in to the drawing for a scholarship to the State-wide MG Conference (lodging not included).

Good Luck!

Meet Melissa—New Statewide Program Rep.



The statewide office is excited to welcome new program representative, **Melissa Womack** to the team! As part of her role Melissa will be managing the statewide web-site, communications and creating a public awareness campaign for the

UCCE Master Gardeners. Melissa is also available to help troubleshoot Volunteer Management System (VMS) questions from coordinators and offer support collecting information and resources and from the University of California. Welcome Melissa!!

PlantRight Survey—Volunteers Needed



Join PlantRight this spring for its 5th annual Spring Nursery Survey. By visiting nurseries in your area, you can help PlantRight to both track the availability of invasive plants in retail stores and work with the nursery industry to replace these plants with environmentally safe alternatives. The 2014 Spring Nursery Survey will take place from late February through June, and we're looking forward to another great year of data collection! To sign up for our 2014 Nursery Survey and register for our prerequisite online presentation (or prerecorded video for experienced volunteers), please visit [this link](#). Online training for our area will be April 16th from 7:30pm-8:30pm

Participation in the 2014 Spring Nursery Survey is easy, educational, and entails:

- Viewing a prerequisite, educational webinar (an online presentation) or pre-recorded video for repeat volunteers;
- Signing up to survey a store in your county (randomly selected for statistical purposes);
- Collecting materials online (e.g. survey form, instructions, and a plant ID key);
- Visiting the store and recording information about any invasive plants sold there;
- Submitting the information to PlantRight.
- On average, this entire process takes about two and half hours to complete and can be done with other volunteers.

Collecting Plant and Insect Samples

We receive some pretty interesting samples in our MG office... a leaf, dead branches, insect body parts and smashed bugs to name a few. When working in the office its important to get a quality sample for diagnosis or identification. Here are a few things to keep in mind when asking for a sample.

Insect Sample Submission:

The following is a checklist of how to handle insect samples:

- Collect multiple samples of all life stages, if possible
- Collect intact specimens (not just body parts)
- Collect portion of the infested plant and briefly describe the damage and the extent of damage exhibited
- Submit quality digital photos of damage if possible
- Use proper packaging material
- Preserve and ship appropriately for the type specimen
- For suspected exotics, notify the specialists and ship in next day delivery
- Include complete and accurate collection data
- Double bag specimens containing suspected exotic species



Smashed bugs stuck to tape and dead plant samples are often submitted to our office

The following list is a reminder of what **NOT** to do:

- X Do NOT** crush sample in tissue or plastic wrap
- X Do NOT** tape them to paper
- X Do NOT** overcrowd them (dead or alive)
- X Do NOT** send them without complete and accurate information
- X Do NOT** collect broken body parts
- X Do NOT** send vacuum cleaner bag samples
- X Do NOT** send samples stuck to tape



Plant Sample Submission :A good sample includes all relevant plant parts, as well as healthy and infected tissue

- Wrap foliage in dry paper towels
- Wrap root ball in its own bag and seal around stem to prevent soil from contaminating leaves
- Place sample in a zip-lock bag and seal.
- Decontaminate the outside of your bags with an appropriate disinfectant. (70% ethanol is common but there are others that work well)
- Place inside a second zip-lock bag and seal (always double bag specimens containing suspected exotic species and/or high risk pests)
- Place in a sturdy box
- Include complete sample submission form and accurate collection data (more information is better)
 - Where, when collected
 - Symptoms
 - Soil type
 - Chemicals/fertilizers history
- Decontaminate the shipping material and yourself with appropriate disinfectant
- Seal all seams of the box with shipping tape
- Ship via overnight mail or drive to designated diagnostic lab to deliver personally- Do not ship on Fri-days or before holidays.

NPIC: A Good Source of Pesticide Information

Mary Louis Flint UC IPM Program

The [National Pesticide Information Center \(NPIC\)](http://npic.orst.edu), a cooperative project of the U.S. EPA and Oregon State University, is dedicated to providing science-based information about pesticides and pesticide-related topics to the general public. Its Web page, <http://npic.orst.edu>, is the most comprehensive and reliable source of pesticide information for consumers in the United States. In addition to its Web site, NPIC operates a toll-free telephone number, 1-800-858-7378, from 7:30 a.m. to 3:30 p.m. PST Monday through Friday that is staffed by experts who can answer pesticide-related questions in 170 different languages.



The NPIC Web site has a wealth of information on many topics including general topics of pesticides and their impact on [humans](#), [pets](#), and the environment as well as procedures for safely using pesticides. There is a section on handling emergencies, and NPIC also asks users to report injuries or problems with pesticides directly through their toll-free phone system. For managing common home and garden pests, the site relies primarily on links to state resources including the University of California Statewide IPM Program.

Probably the most useful and unique documents on the site are the [Active Ingredient Fact Sheets](#). These fact sheets cover 38 common home-use pesticide ingredients, including a few no longer registered. General fact sheets are written in simple language for the general public. Technical fact sheets provide similar information in a little more depth for people who want to know more about the ingredient's chemistry. All sheets explain what the chemical is, how it controls target pests, and its toxicity to people (including acute and chronic toxicity), pets, and wildlife, as well as how long the pesticide is likely to persist in the environment. Each sheet has a list of references for more information. These are excellent documents to print out and provide to your customers or employees. Take a look at this useful Web site and bookmark it on your computer for quick reference. It is frequently updated with new information and resources that can help you stay up to date.

QWEL—Landscape Water Audit Certification

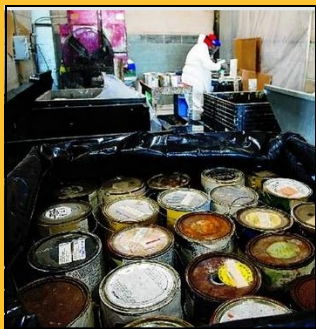
QWEL provides graduates with knowledge in water efficient and sustainable landscape practices including water management and preservation of other valuable resources. This Landscape Water audit class will provide information for students to perform a landscape water audit under AB1881 guidelines. Students who complete and pass the certification test will be certified as EPA Water Sense Landscape Water Auditors.

Program Details:

6 Mondays, March 21 –
April 25
6:00 – 9:00 p.m. \$75.00
Delta College, Shima 127

To go to Deltas registration page, [click here](#). For more information about the QWEL program, [click here](#)





Old paint ready to be recycled into new paint. Photo Stockton Record.

For more information visit the websites below.

[Onsite Electronics Recycling](#)

2331 N. Teepee Dr.
Stockton, 95205
7:30 am – 4:00 pm
Monday-Friday

[SJ HHW Facility](#)

7850 R A Bridgeford St,
Stockton, 95206
Open Thursday
Through Saturday,
From 9:00 a.m. to 3:00
p.m.

Get Rid of Your Hazardous and E-waste for Free!

A group of master gardeners went on a tour of the San Joaquin County HHW and On-site Electronics Recycling in early February. We learned a lot about these two valuable programs.

The Household Hazardous Waste Facility (HHW) was our first stop. Ollie met us with fashionable goggles and her spunky personality. It's a fairly small building that does a lot for our county! Not long after our tour started a couple of cars pulled up with items to drop off. You don't have to get out of your car and all you have to do is sign a piece of paper and provide your zip code. We found out there isn't much that they won't take. Fluorescent bulbs, used oil, old paint and pesticides to pool chemicals, batteries and Sharps they take it all. For a complete list of items you can bring, [click here](#). There are DOT restrictions to keep in mind when transporting hazardous waste. Residents may transport no more than 15 gallons or 125 pounds of Household Hazardous Waste per any one trip. They also have a reuse room where you can pick up items that still have some use left in them for free. Quantities vary per day. We were there at 10 am and by then the entire room was already wiped clean.

Onsite Electronics Recycling was formed in 2004 to provide responsible management of discarded electronics. Onsite's current facility was remodeled using sustainable green solutions wherever possible. This includes recycled paint inside and out, polished concrete floors, used furniture, recycled content carpet tiles, energy efficient shades, T-8 fluorescent lights, and water efficient toilets and faucets.

Onsite provides e-waste recycling solutions to public and private solid waste facilities, municipalities, businesses, schools, non-profit organizations and residents. This includes transportation and recycling services, packaging, collection events and fundraisers. Onsite's process is to recycle non-functional electronics and repair, re-use or refurbish functional electronics. When materials cannot be refurbished, they provide for the complete recycling of all end-of-life material collected. They do not ship any whole units overseas or out of State for recycling. This provides customers with the security that their materials are being managed in an environmentally safe manner and they are not contributing to environmental harm in developing Countries.



Learning how everything is sorted and recycled after its been torn apart.

While we were there we saw employees dismantling television sets, tearing apart computer towers and smashing hard drives, sorting plastic from other recyclable materials in circuit boards and a lot more. Before we left they took us to a room where they were wiping clean hard drives on computers that were still usable and even showed us a machine that crushed hard drives so the information is not recoverable. We saw pallets of old (heavy and gigantic) television sets, lots of computers, old Christmas lights, smoke detectors, radios and lots more. If it has an electrical cord they will take it.



Top and left: AgVenture—Manteca: Monica B talking about seeds, Pat S. & Inez B. with their soil display and Jeff R. & Rita R. with the honey bees.



Below: Monica B. looking through a microscope at the invasive pest workshop.



Lee M. demonstrating pruning table grapes at the Pruning Day workshop

Carol R, Kathy I, & Leslie O. modeling their safety glasses at the HHW



Just Because It's Really Cool...

photos by Kathy Keatley Garvey



Right: Feral honeybee colony in Vacaville

Bottom right: Instrumental insemination.. Who would have thought?!?!





MARCYS CONTACT INFORMATION

E-mail: mdhachman@ucanr.edu
Cell Phone: 209-423-2336
Office: 209-953-6111
[Master Gardener Web-page](#)
Click on the images below to visit our Facebook and Pinterest page



Thank you Pinterest—Seed Starting



Left: Liter soda bottle over a pot
Right: Toilet paper tubes
Below: Newspaper and recycled drink cartons.
Bottom: Salad (or similar) plastic cartons, egg cartons and egg shells



THE NEW EPA BEE ADVISORY BOX

On EPA's new and strengthened pesticide label to protect pollinators

PROTECTION OF POLLINATORS



APPLICATION RESTRICTIONS EXIST FOR THIS PRODUCT BECAUSE OF RISK TO BEES AND OTHER INSECT POLLINATORS. FOLLOW APPLICATION RESTRICTIONS FOUND IN THE DIRECTIONS FOR USE TO PROTECT POLLINATORS.



Look for the bee hazard icon in the Directions for Use for each application site for specific use restrictions and instructions to protect bees and other insect pollinators.

This product can kill bees and other insect pollinators.

Bees and other insect pollinators will forage on plants when they flower, shed pollen, or produce nectar.

Bees and other insect pollinators can be exposed to this pesticide from:

- Direct contact during foliar applications, or contact with residues on plant surfaces after foliar applications
- Ingestion of residues in nectar and pollen when the pesticide is applied as a seed treatment, soil, tree injection, as well as foliar applications.

When Using This Product Take Steps To:

- Minimize exposure of this product to bees and other insect pollinators when they are foraging on pollinator attractive plants around the application site.
- Minimize drift of this product on to beehives or to off-site pollinator attractive habitat. Drift of this product onto beehives can result in bee kills.

Information on protecting bees and other insect pollinators may be found at the Pesticide Environmental Stewardship website at:

<http://pesticidestewardship.org/pollinatorprotection/Pages/default.aspx>

Pesticide incidents (for example, bee kills) should immediately be reported to the state/tribal lead agency. For contact information for your state/tribe, go to: www.napcc.org. Pesticide incidents can also be reported to the National Pesticide Information Center at: www.npic.orst.edu or directly to EPA at: bee@epa.gov

Alerts users to separate restrictions on the label. These prohibit certain pesticide use when bees are present.



The new bee icon helps signal the pesticide's potential hazard to bees.

Makes clear that pesticide products can kill bees and pollinators.

Bees are often present and foraging when plants and trees flower. EPA's new label makes it clear that pesticides cannot be applied until all petals have fallen.

Warns users that direct contact and ingestion could harm pollinators. EPA is working with beekeepers, growers, pesticide companies, and others to advance pesticide management practices.

Highlights the importance of avoiding drift. Sometimes, wind can cause pesticides to drift to new areas and can cause bee kills.

The science says that there are many causes for a decline in pollinator health, including pesticide exposure. EPA's new label will help protect pollinators.



Read EPA's new and strengthened label requirements: <http://go.usa.gov/jHH4>

GROWING FROM THE GROUND UP

Tuesdays in March • 6:00-7:30 p.m.

St. Joseph's Auditorium • No registration necessary

March 4 **Good Soil Starts at the Bottom of the Compost Pile**

Another spring is just through the garden gates. What a great time to take a cue from nature and celebrate the jobs plants play in our lives. Whether you are a wanna-be composter, a lazy gardener, or desire vegetables or flowers, we will have something for you.

Julie Morehouse is a local Garden Coach and is the owner and founder of Go Out and Grow Something! She brings 20+ years of nursery and gardening experience, is a Master Gardener, an educator and a plant specialist!

March 11 **Backyard Herbalism**

Here in the Valley, we have the perfect climate for many culinary and medicinal herbs. Come learn about health promoting herbs that you can grow in your own backyard or in pots on the patio; or find in your yard or in nearby areas. Herbs are our green allies, both in the kitchen and when used as healing salves, liniments and more. Enjoy a fragrant, fun-filled evening learning how to grow, find, identify, and use herbs to your benefit.

Presenter **Glenda Glass** is a retired clinical microbiologist and a clinical herbalist.

March 18 **Grow Your Own!**

Too much fertilizer in the garden of your mind? Using pollinating thoughts of gratitude and intention, grow your own positive state of well-being! Join us and awaken to your natural, organic ability to thrive.

Presenter **Linda Potter** specializes in meditation and guided imagery.



Dignity Health
St. Joseph's Medical Center

Although no registration is necessary, if you need additional information email sjcancerinfo@dignityhealth.org or call 467-6550 and leave a message.