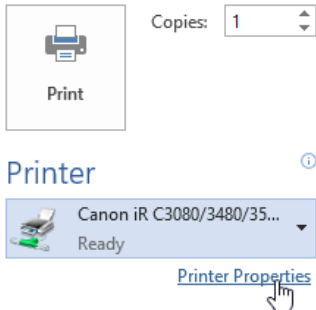


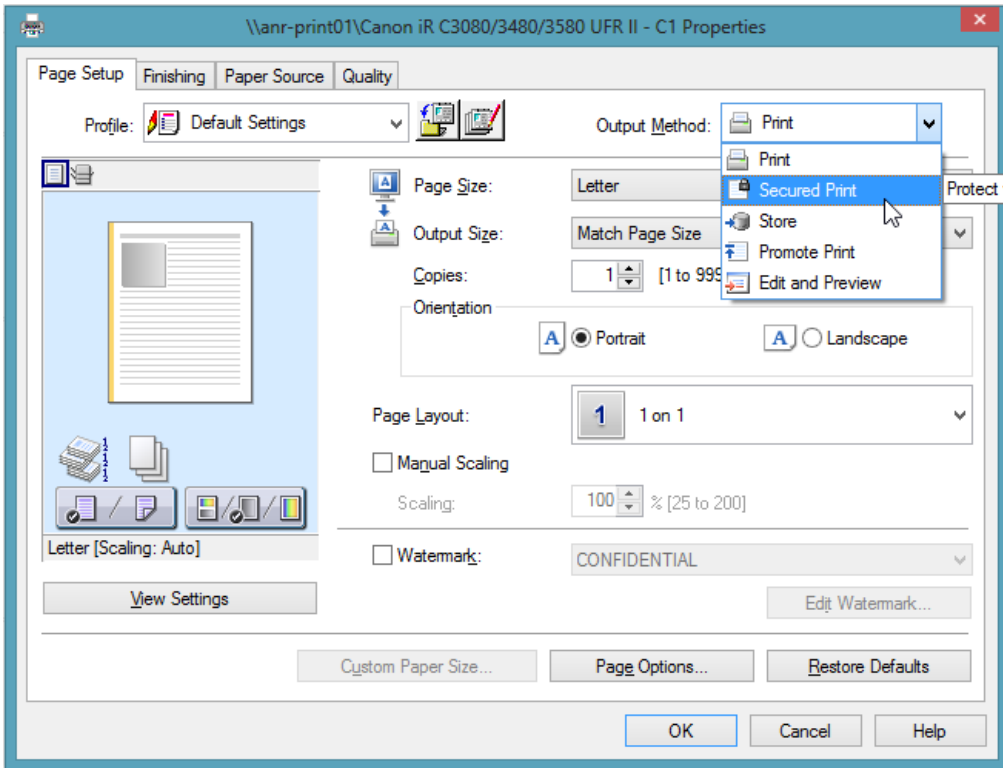
Secure Print for the C1 (Central First Floor) Printer

From the Print dialog box, pick Printer Properties:

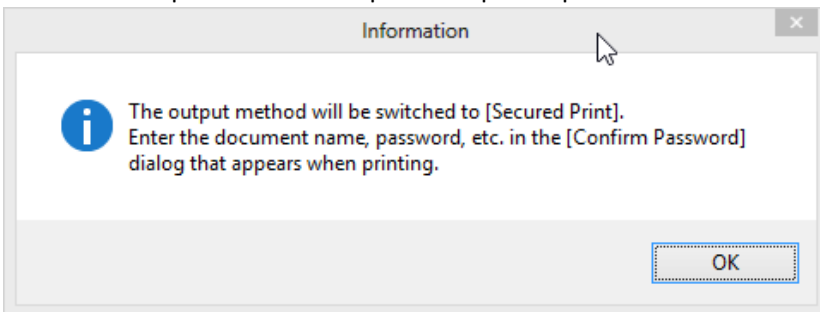
Print



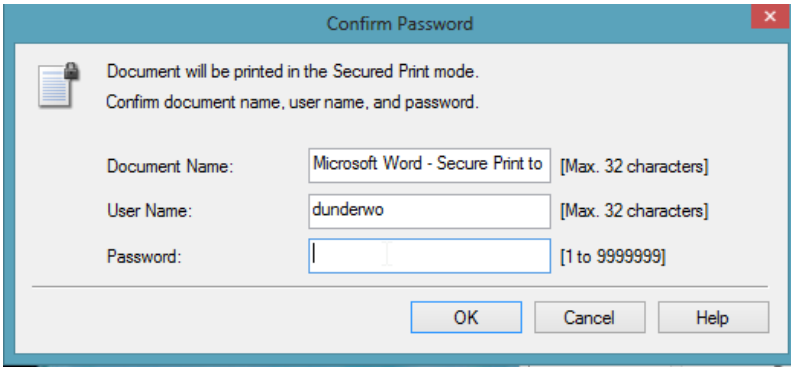
From the 'Output Method' drop down options pick Secure Print:



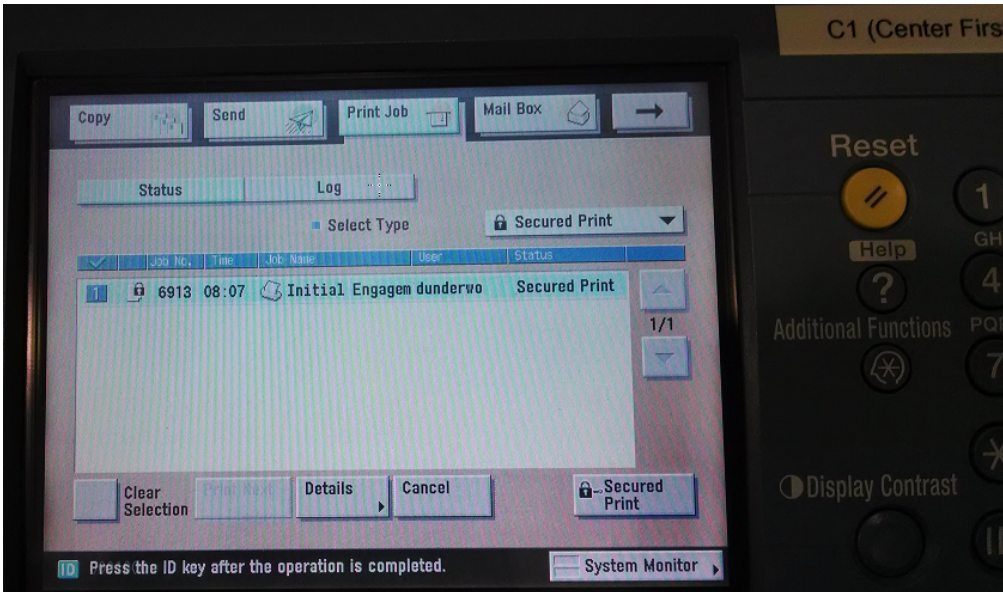
From the 'Output Method' drop down options pick Secure Print:



Set the PIN number to release the document at the printer, this can be any NUMBER to be put in the printer to release the job. If you forget this number the job will be stuck in the printer until it expires, which we're told is 24 hours:



Login to the printer and pick the Print Job tab, highlight the desired job and pick Secured Print:



Enter the document PIN code to release the document and print:

