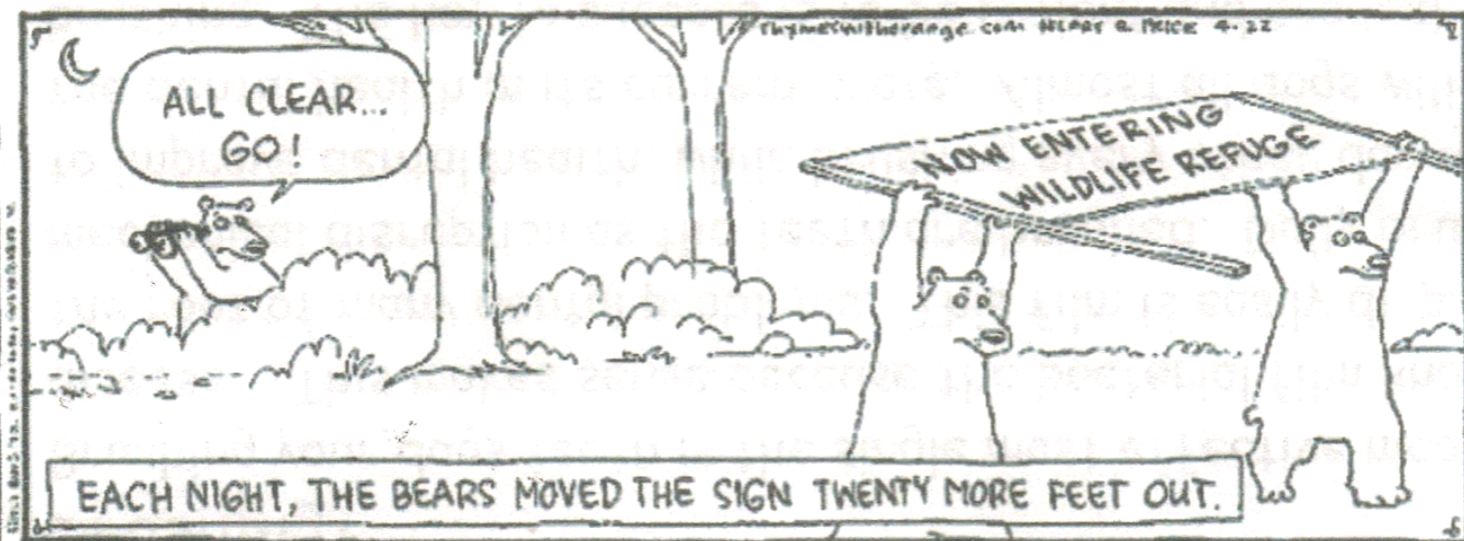


# THE RECLAIM



EARTH DAY  
2008



A vibrant garden scene with blue hydrangeas and pink cherry blossoms. The background is a lush garden with various flowers in shades of blue, pink, and yellow, set against green foliage.

# Sharing Your Garden With Wildlife

**" The universe is composed of subjects to be communed with, not objects to be exploited. Everything has its own voice. Thunder and lightning and stars and planets, flowers, birds, animals, trees —all these have voices, and they constitute a community of existence that is profoundly related.**

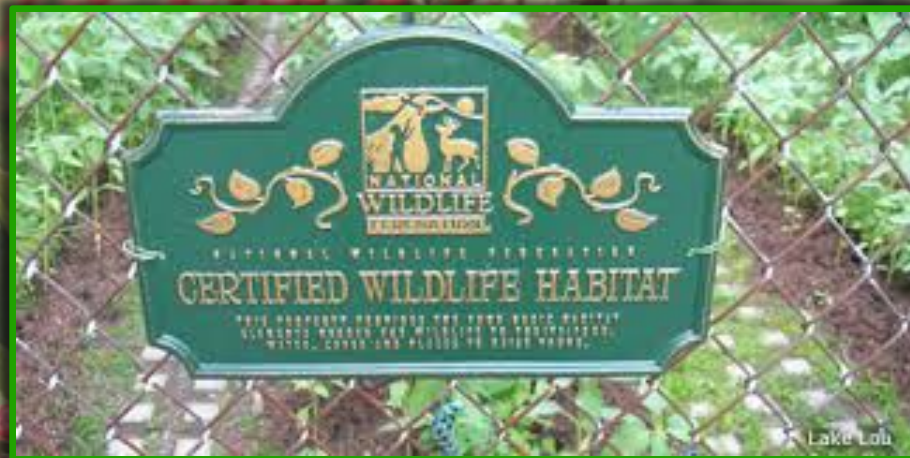
**"**

**-Thomas Berry**



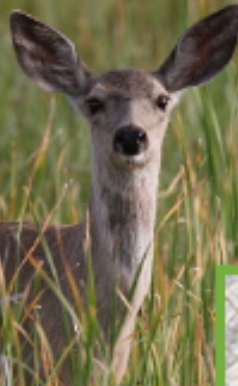
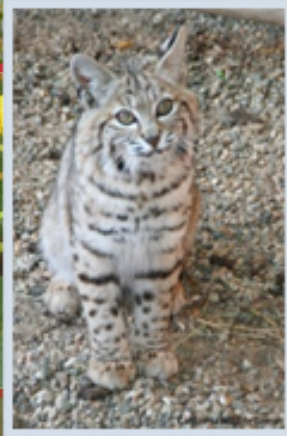
Liberation!





**"The happy garden is in harmony with its climate and soil. The more I stopped battling the elements to grow what didn't belong, the more the animals came."**

***-- Carol Buchanan 'Wildlife Sanctuary Garden'***

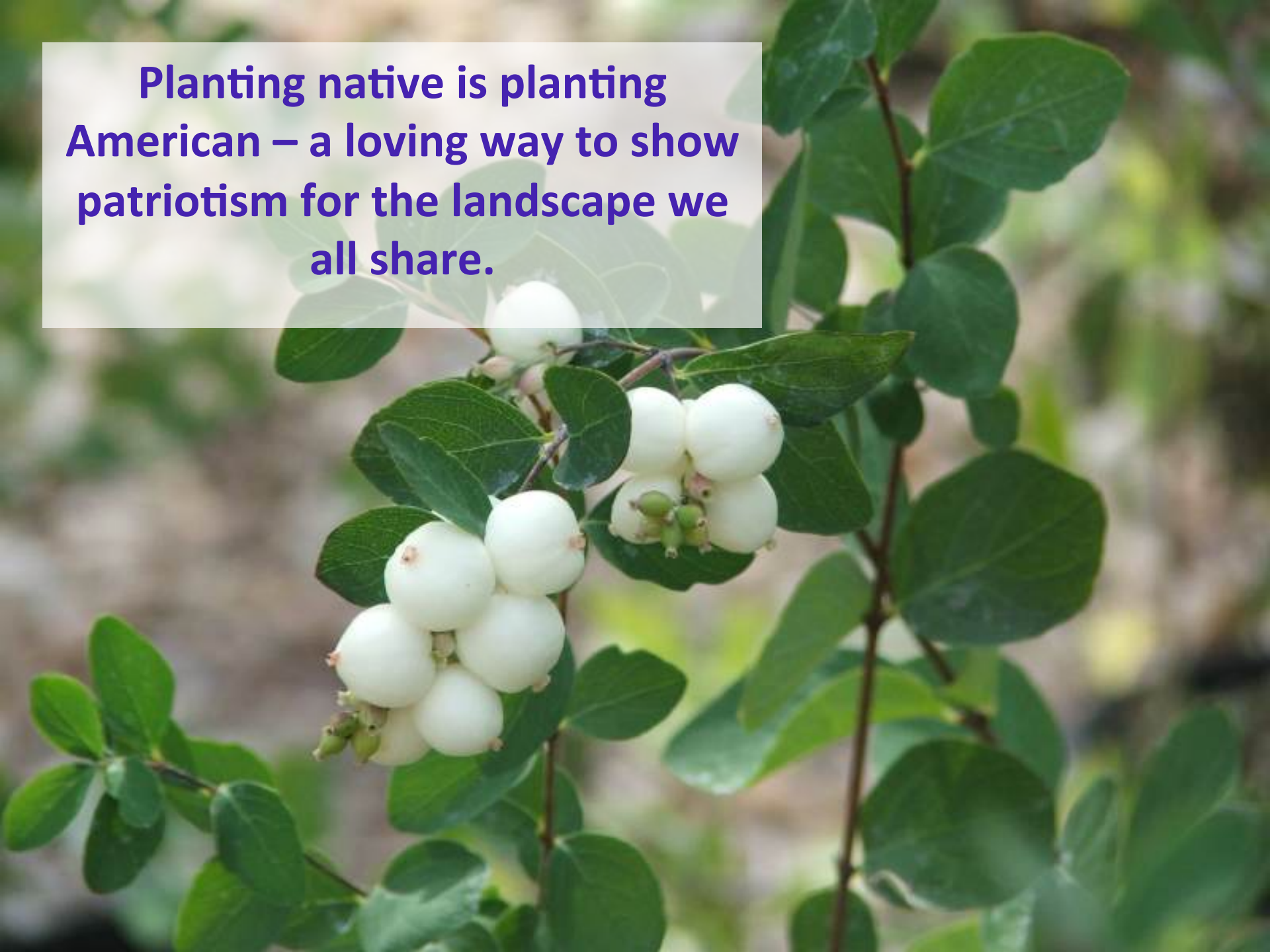


**"We now consider  
ourselves  
stewards of the  
property for those  
without the  
words to speak  
for themselves."**

**-- Carol Buchanan  
'Wildlife  
Sanctuary  
Garden'**



**Planting native is planting  
American – a loving way to show  
patriotism for the landscape we  
all share.**



# GROUND COVERS

DO NOT PLANT!

INVASIVE!

Don't  
plant a  
pest!



Photo by Richard Old

## Periwinkle (*Vinca major*)

This aggressive grower has trailing stems that root wherever they touch the soil. This ability to resprout from stem fragments enables periwinkle to spread rapidly

in shady drainages and creeks, smothering the native plant community and reducing available wildlife habitat and forage.



Missouri Botanical Garden

## English ivy, Algerian ivy (*Hedera helix*, *Hedera canariensis*)

Some ivy species in the *Hedera* genus are invasive. Ivies can climb trees and under-story plants causing damage by completely shading them. Shading also prevents regeneration of new trees and shrubs. Birds often spread the berries of these ivies into riparian and wildland areas. Ivy also harbors pests, such as rats and

snails. It is difficult to distinguish problem ivies from less invasive ones. Never dispose of ivy cuttings into natural areas.

## TRY PLANTING THESE INSTEAD

### Star jasmine ☀️ 🌑 💧

(*Trachelospermum jasminoides*)



Photo by C. Marrus

Evergreen, vining groundcover with glossy, dark green leaves and pale yellow, pinwheel-shaped flowers with a jasmine scent.

### Pachysandra 🌑 🌑 💧

(*Pachysandra terminalis*)



Missouri Botanical Garden

Evergreen leaves are shiny dark green; small white flowers on 1-2" spikes; withstands shade and is widely used under trees. Grows more slowly than

ivy or periwinkle but has a crisp, neat growth form.

### Common yarrow ☀️ 🌑 🌿

(*Achillea millefolium*)



Native, perennial with finely divided leaves and white flower heads. White flowers in spring, blooms can be prolonged by cutting back old flower stocks or mowing.

### Carpet bugle/Ajuga ☀️ 🌑 💧

(*Ajuga reptans*)

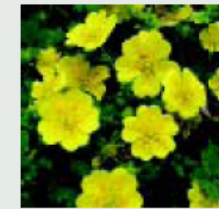


This popular ground cover spreads quickly by runners, making a mat of dark green leaves. Blue

flowers appear in spring and early summer.

### Cinquefoil ☀️ 🌑 🌿

(*Potentilla* species)



Sturdy, unfussy perennials that flower mid- to late spring. Leaves are reminiscent of strawberry foliage. *Potentilla*

*glandulosa* is a common native forest understory perennial in the Sierra foothill region.

### Creeping mahonia ☀️ 🌑 💧 🌿

(*Mahonia repens*)



Photo by Wm. Hewlett

Prickly leaves, short clusters of flowers in mid- to late spring followed by blue berries; good winter color.

**Also try:** Dwarf coyote bush (*Baccharis pilularis* or cultivars); Creeping manzanita (*Arctostaphylos* species); California wild grape – native (*Vitis californica*); Creeping sage – native (*Salvia sonomensis*).

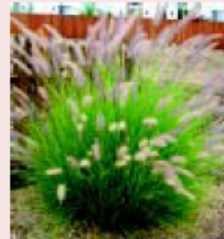
# ORNAMENTAL GRASSES AND SCREENS

**Don't  
plant a  
pest!**

## DON'T PLANT!

## INVASIVE!

### Crimson fountaingrass (*Pennisetum setaceum*)



Spreads aggressively via seed by wind, water or hitch hiking on vehicles and animals. Dense infestations can crowd out native and other desirable

vegetation and increase fire hazard. Existing research indicates that red varieties are not invasive.

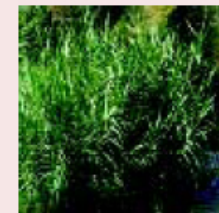
### Pampasgrass, jubatagrass (*Cortaderia selloana*, *Cortaderia jubata*)



Wind and water can carry the tiny seeds for miles. The massive size of each plant with its accumulated litter reduces wildlife habitat

and can create a serious fire and flood hazard. Riparian areas are particularly vulnerable to invasion and the damage caused by these plants.

### Giant reed/Arundo (*Arundo donax*)



*Photo by Joseph DiTomasso*

An extremely fast-growing plant that grows in moist areas. Arundo spreads by root sprouts and stem sections, can cause erosion and displaces

desirable plants. Highly flammable and can burn even when green. Areas along creeks and streams are particularly vulnerable to invasion and the damage caused by this plant.

## TRY PLANTING THESE INSTEAD

### Deer grass ☀️ 🌑 💧 🌿 (*Muhlenbergia rigens*)



Clumping perennial grass growing up to 3 feet tall with 2 foot plumes rising about the plant. Native Americans use it

for making baskets. Other *Muhlenbergia* species can also be good choices.

### New Zealand flax ☀️ 🌑 💧 💧 (*Phormium tenax*)



*Chris Morris, San Luis Obispo Co. Dept. of Agriculture*

Large, hardy, fast growing and requires minimal care. Many varieties available including striking stripes of red, yellow and green.

### Bamboo – clumping varieties only (*Bambusa multiplex*) ☀️ 🌑 💧 💧



*Photo by Steve Green*

Rhizomes of the clumping bamboo stay close to the plant, decreasing the ability to become invasive like the running bamboo

varieties. Dense growth forms good hedges and screens.

### California fescue ☀️ 🌑 💧 💧 🌿 (*Festuca californica*)



Flowering stalks rise up to 5 feet above large clumped grass (2-3 foot tall) in late spring, early summer. Striking appearance, good adaptability, with clumps holding their shape well throughout the year.

*Photo courtesy Santa Barbara Botanical Garden*

### Blue oat grass ☀️ 💧 (*Helictotrichon sempervirens*)



*Photo courtesy GardenSoft*

Evergreen, bright blue-gray, narrow leaves in a fountain like clump. In spring, stems to 2 feet or taller rise above foliage, bearing straw-colored flower clusters.

**Also try:** California melic - native (*Melica californica*), Giant wild rye (*Leymus condensatus*)

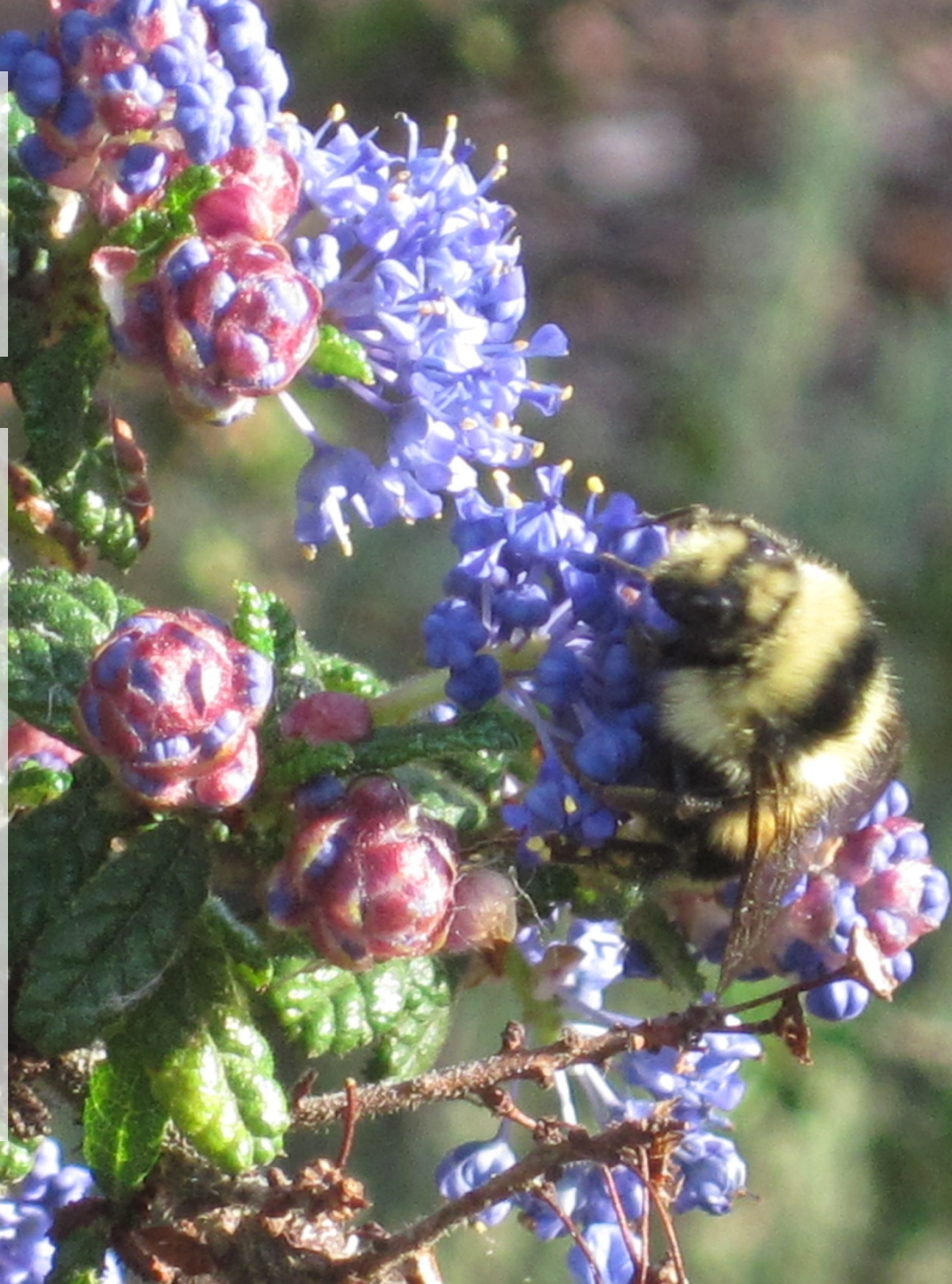
# Countdown...

## Five Necessary Elements for Your Habitat Garden



# # 5 Food

- Nectar
- Seeds
- Pollen
- Berries
- Bugs,  
Bugs,  
Bugs!



# We have an aging oak population and we are losing trees.

Loss of habitat

Over grazing

Lack of regeneration

Climate Change

Urbanization and sprawl

Fire management and mismanagement

Invasive Plants & high rodent population

Heat and drought



Sudden Oak Death



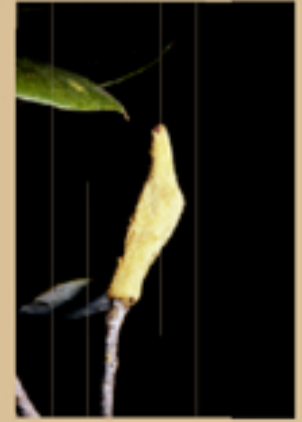
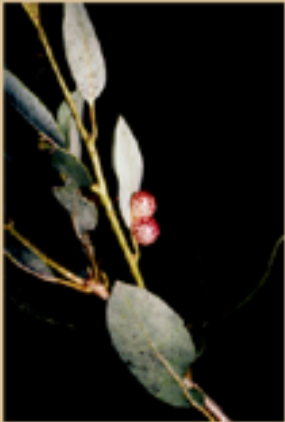
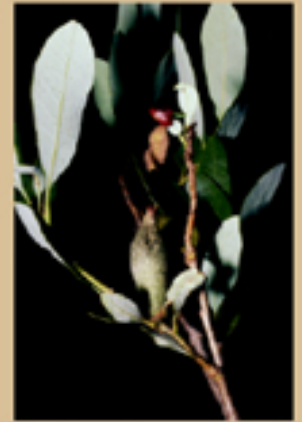
# *Wasp Galls*

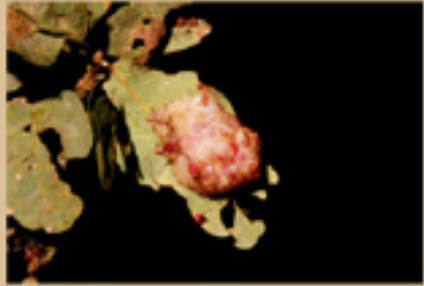


## *on California Oaks*

A single oak tree can host hundreds of species of insects, spiders, lichens, mosses, fungi, and other organisms creating a veritable arboreal zoo.

Our only reminder that some insects depend on oak flowers, leaves, fruit, and branches is the presence of noticeable and sometimes colorful and ornate galls on these plant parts.



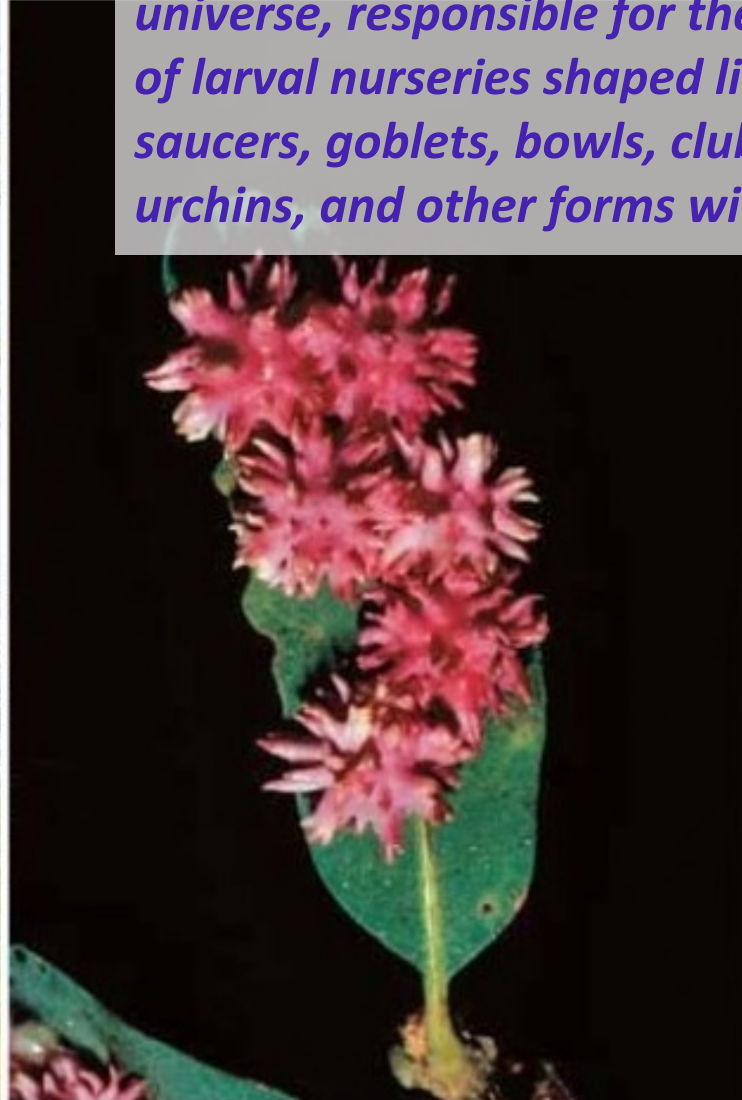


# Call of the Galls

*The Lively Universe of an Ancient Oak*

by **Ron Russo**

*“Each species of wasp engenders a gall with its own characteristic shape, size, and color. These tiny wasps are the premier Lilliputian architects of the oak universe, responsible for the construction of larval nurseries shaped like cups, saucers, goblets, bowls, clubs, stars, sea urchins, and other forms without name.”*



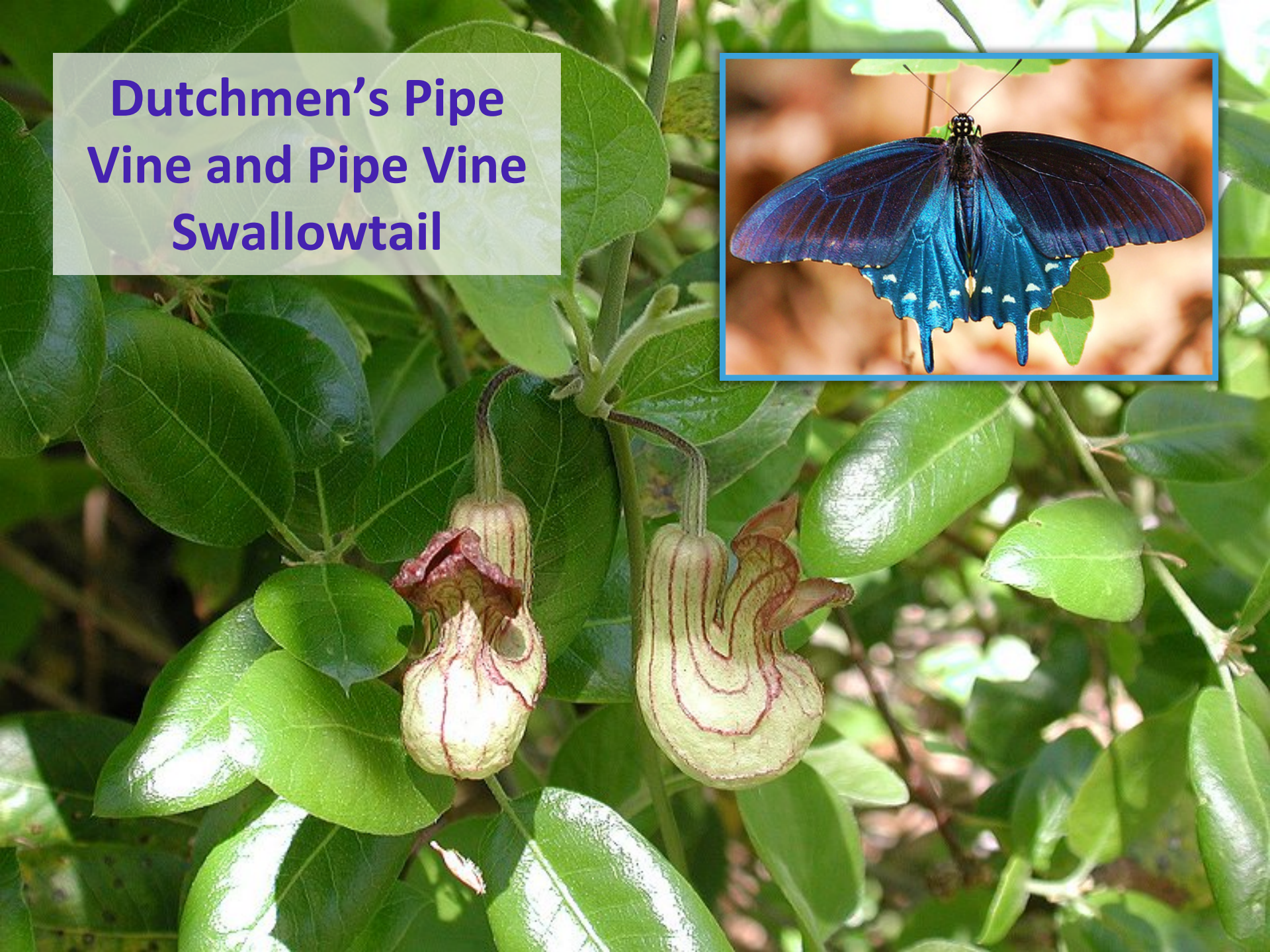


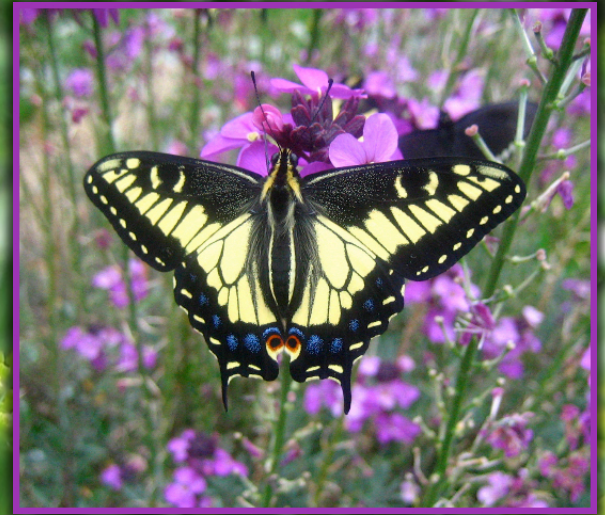
**Bees and wasps are the tiny workhorses on which at least 1/3 of our crops depend.**

# Monarch butterfly and Milkweed



**Dutchmen's Pipe  
Vine and Pipe Vine  
Swallowtail**





**Fennel and Anise  
Swallowtail**

# # 4 Water

- Ponds with gradually-sloping sides, ledges
- Edge vegetation
- Bird baths, on ground and above moving water with drippers
- Aerators must be kept clean to prevent disease





## BEAVER CHEWED TREES

### GOPPICE

MAKING PERFECT NESTING FOR  
MIGRATORY AND SONGBIRDS

**More beavers = More birds!**



INFLUENCE OF BEAVER DAM DENSITY ON RIPARIAN AREAS  
AND RIPARIAN BIRDS IN SHRUBSTEPPE OF WYOMING  
Western North American Naturalist 68(3), © 2008, pp. 365-373

# Smaller water features



**Wetlands are nurseries for life!**



**Over 95% of California's wetlands are gone...**

# # 3 Shelter



- Brush piles/logs/snags
- Loose rock piles/walls
- Hedgerows
- Edge habitat
- Tree and shrub layers

**The variety of wildlife you may see using your brush shelter over the years is long and impressive:**

- 
- A photograph of a dark-colored bird, possibly a Junco, perched on a mossy branch. The bird has a dark head and back with white spots on its wings and a reddish-brown breast. The background is a blurred natural setting with logs and greenery.
- **Dragonflies perch on the tips of branches "hawking" for flying insects.**
  - **Salamanders and lizards hide under logs at the base.**
  - **Lizards and butterflies sun themselves on the surface.**
  - **Rabbits, turtles, toads, and birds use the cubby holes for shelter.**
  - **Woodpeckers will pick insects out of the more decayed wood.**

**A toad abode**





# Snags are Nature's **APARTMENT COMPLEXES**

If a tree dies in your yard  
and no one is around to make it fall,  
Does it make a sound?

Yes - the sound of chicks peeping,  
birds a-drumming, animals a-scurrying!

If it's safe, leave it be.

# Bee nest project



# No Place to Hide...

- **Urban sky glow** — the brightening of the night sky over inhabited areas.
- **Light trespass** — light falling where it is not intended, wanted, or needed.
- **Glare** — excessive brightness which causes visual discomfort. High levels of glare can decrease visibility.
- **Clutter** — bright, confusing, and excessive groupings of light sources, commonly found in over-lit urban areas. The proliferation of clutter contributes to urban sky glow, trespass, and glare.

## # 2 Bring on the Babies!

- Carefully mow and trim in spring
- Provide safe hiding places on the ground and above
- Leave young alone unless in danger
- Let moms feed their babies
- Call rehabbers before removing

# # 1

## Poison is Easy, Not Better

- Chemicals are not a healthy solution
- Rat poison highly toxic to all life
- Avoid big box nursery plants
- Do you really need regular pest service?
- Poison is easy, not better!



**IN ONE YEAR I WILL  
EAT 1,000 RODENTS.**



**PLEASE,  
DON'T POISON  
MY DINNER.**

Rodenticides kill  
more than just  
rodents.

Let birds of prey  
do their job.



[raptorsarethesolution.org](http://raptorsarethesolution.org)

Show Bees Some

**L**  **LOVE**

**STOP SELLING BEE  
KILLING PESTICIDES**

From the director of THE FUTURE OF FOOD

# Symphony of the Soil

LILY FILMS PRESENTS SYMPHONY OF THE SOIL A FILM BY DEBORAH KOONS GARCIA  
EDITED BY VIVIEN HILLGROVE MUSIC BY TODD BOEKELHEIDE ARTWORK & ANIMATION BY WILL KIM CINEMATOGRAPHY BY JOHN CHATER  
FEATURING IGNACIO CHAPELA KATE SCOW FRED KIRSCHENMANN VANDANA SHIVA JOHN REGANOLD DAVID MONTGOMERY  
ARCHIVAL RESEARCHER & ASSOCIATE PRODUCER ARIANA GARFINKEL ASSOCIATE PRODUCERS CAROLINA CRUZ SANTIAGO MOLLY JONES  
ASSOCIATE PRODUCER & POST-PRODUCTION COORDINATOR SARAH GORSLINE ASSOCIATE PRODUCER & PRODUCTION MANAGER JESSY BECKETT  
PRODUCED BY DEBORAH KOONS GARCIA  
WRITTEN & DIRECTED BY DEBORAH KOONS GARCIA  
[www.SymphonyoftheSoil.com](http://www.SymphonyoftheSoil.com)



## [Raptor Blues](#)

by raptorsrthesolution

Amazing young (award-winning) animator Ian Timothy produced this claymation video for RATS, telling the story of secondary poisoning of raptors from rat poison.



# Sharing Your Garden With Wildlife

Questions?