

# **Welcome to the State of the Santa Barbara County 4-H YDP Address**



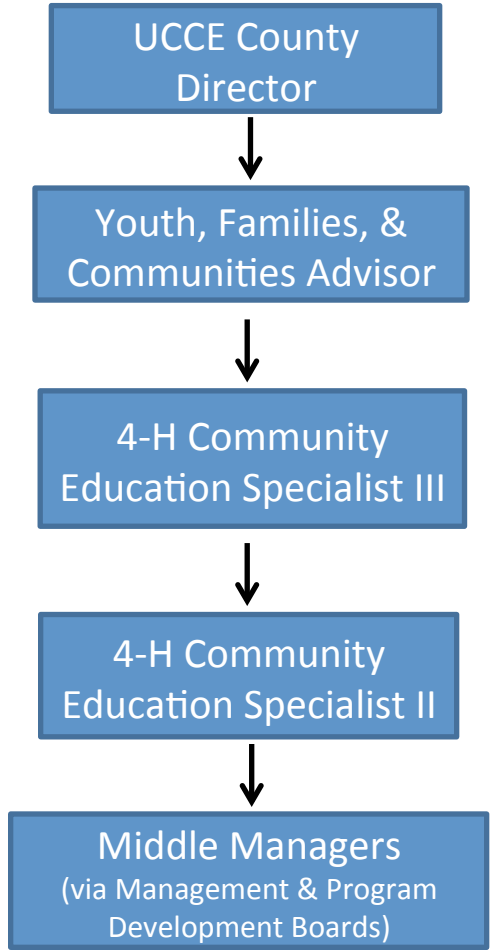
**June 27, 2014**  
**Church at the Crossroads**  
**236 La Lata Drive, Buellton, CA 93427**



**University of California**

Agriculture and Natural Resources | 4-H Youth Development Program

# Management Structure



**Advised by:**

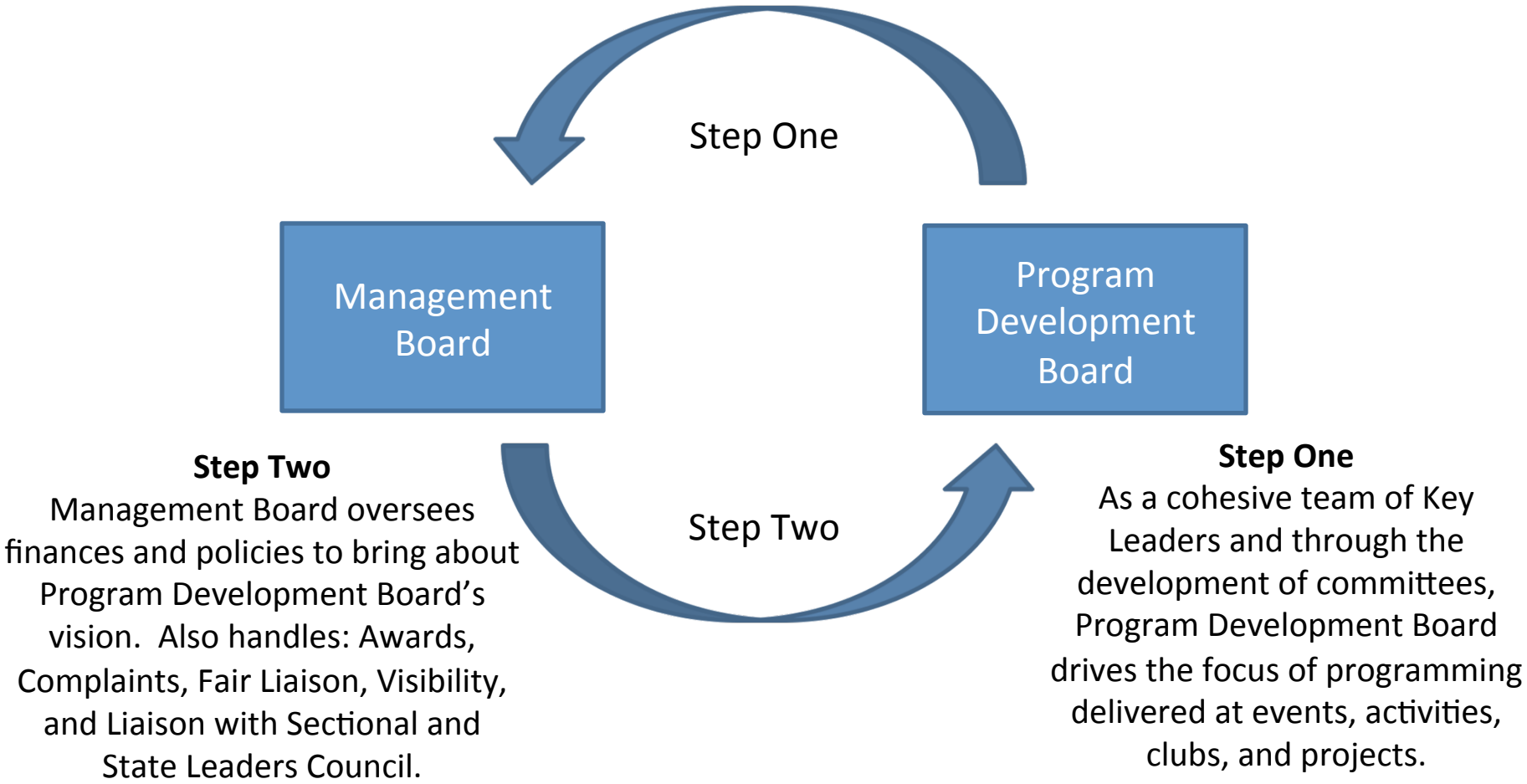
- 4-H Expansion & Review Committee
- California State 4-H Office
- California 4-H Foundation
  - National 4-H Office

**Responsible to:**

- University of California Cooperative Extension
- Agricultural and Natural Resources Division (ANR)
- SB Co. Board of Supervisors
  - USDA
- Other funders & stakeholders



# Middle Management Structure



III. Strategic Planning and Ongoing Program Assessments

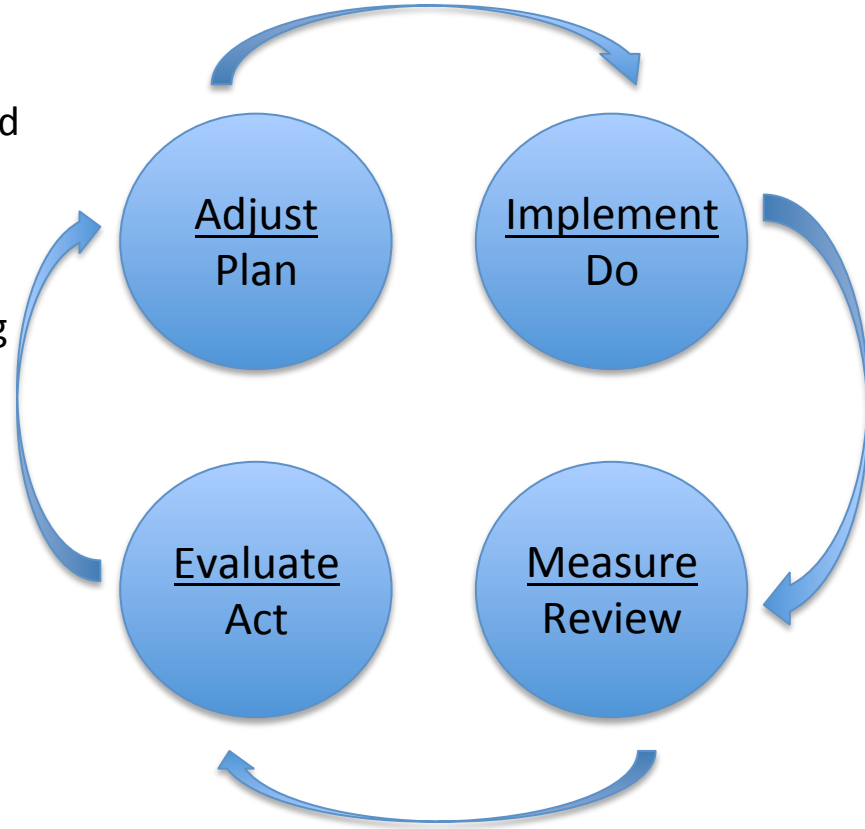
# Strategic Planning/Budgeting Cycle

**Timeframe:** Winter

**Actions:** Key Leaders develop programming plans and budgets, review plans with with staff, & meet as a board to finalize budget proposal; MB reviews, amends, and approves budget; Advisor approves final programming plans and budget.

**Timeframe:** Fall

**Actions:** Strategic Planning Committee (made up of MB Representative, PDB Representative; Staff; and Youth Members) meet to adjust Strategic Plan.



**Timeframe:** Winter thru End of Program Year

**Actions:** PDB focuses programming (via events, activities, clubs, projects) to support strategic plan; MB oversees finances and policies to support strategic plan and deliverables of the PDB and MB committees

**Timeframe:** Beginning of Program Year

**Actions:** Compile Measurable Outcomes; Leadership Team Strategic Planning (led by Advisor); Needs Assessment (5-year)



# Ongoing Program Assessments

Outcome evaluation and impact measures are key to all Youth, Families, and Communities Programs.

- Key project indicators of success are built into the strategic plan, referred to as Measurable Outcomes.
- Other assessments will include Parity Reports, Mixed Method Evaluations, Online Record Book Project System

Reporting results allows all stakeholders to assess our growth, impacts, and potential. Currently, we report to:

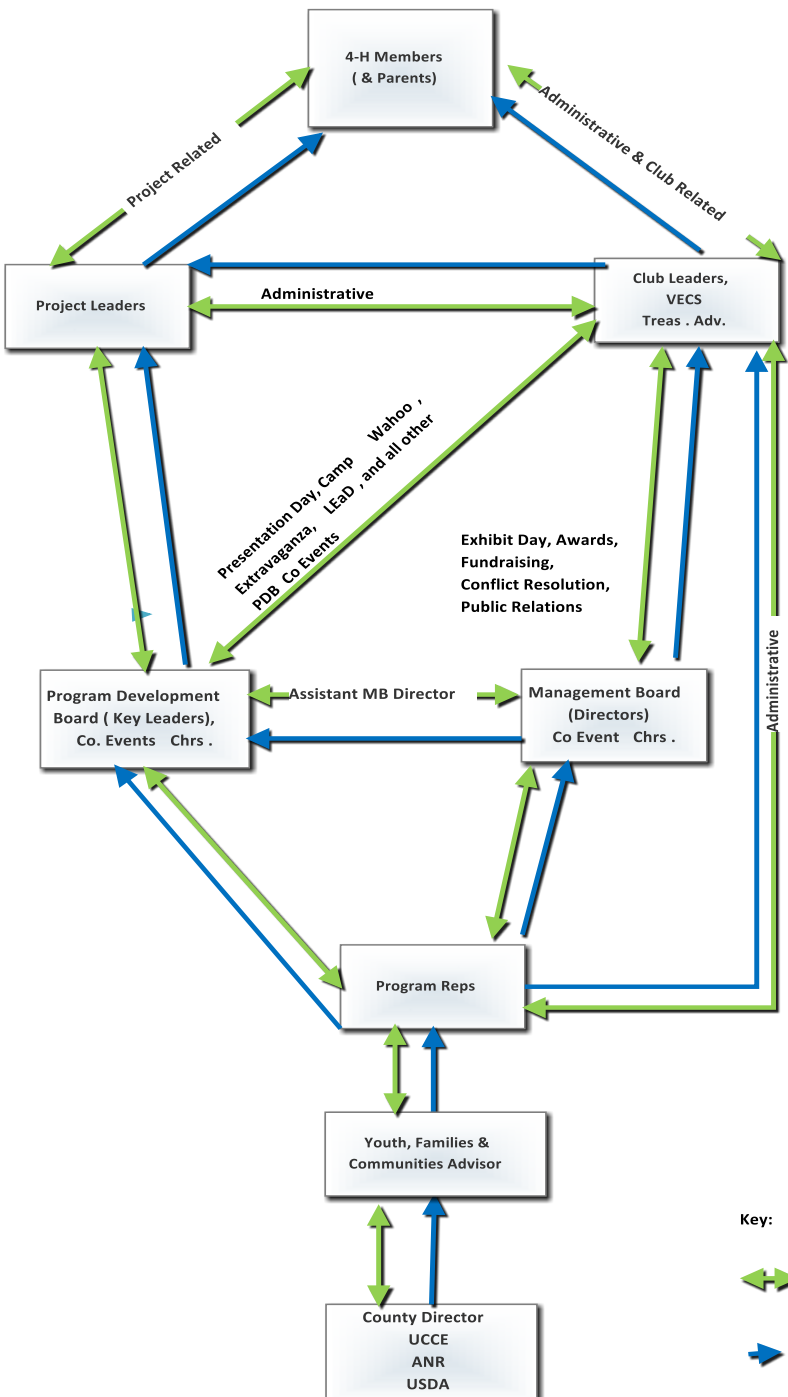
- UCCE/ANR
- USDA
- County Board of Supervisors
- Funders



Image Credit: IAR (2014). Retrieved from:  
<https://www.utexas.edu/academic/ctl/assessment/iar/programs/>



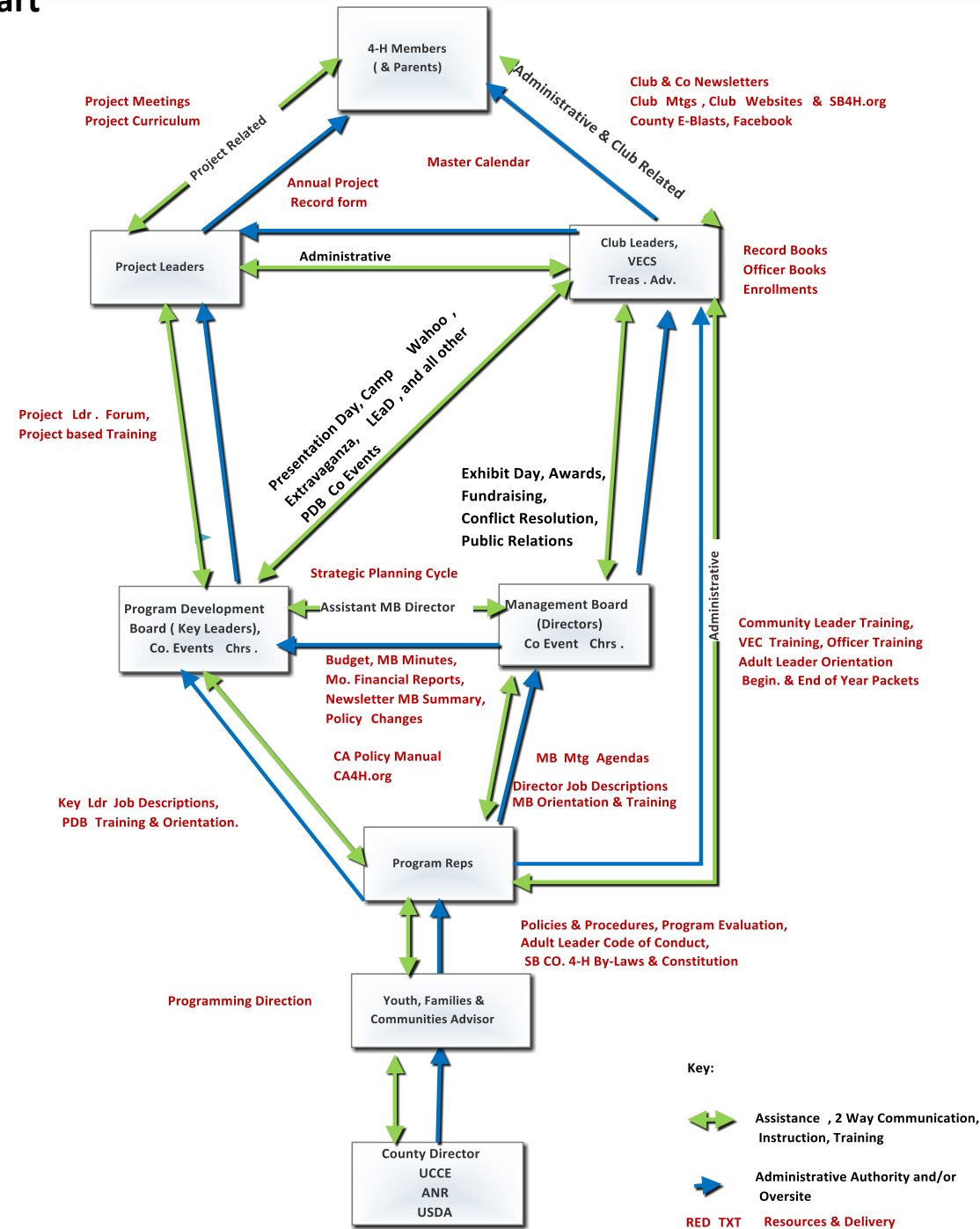
# IV. Communication Flowchart



Key:

- Assistance, 2 Way Communication, Instruction, Training
- Administrative Authority and/or Oversight

# IV. Communication Flowchart



# Codes of Conduct

1. Adult Code of Conduct
2. Parent, Guardian, or Adult Participant Code of Conduct
3. Member Code of Conduct



### County Complaint Process

- 4-H Youth Development (4-H YDP) staff are available to assist members and adult volunteers, address and create solutions to problems and for consultation and interpretation of policy and procedure. When there is a complaint regarding an individual, situation or event, a County Complaint Form should first be filed with the 4H YDP staff so appropriate action can be taken.
- Final decisions regarding the 4-H program in a county and the appointment of volunteers are the responsibility of the University of California Cooperative Extension County Director.

#### **How to file a Complaint Form**

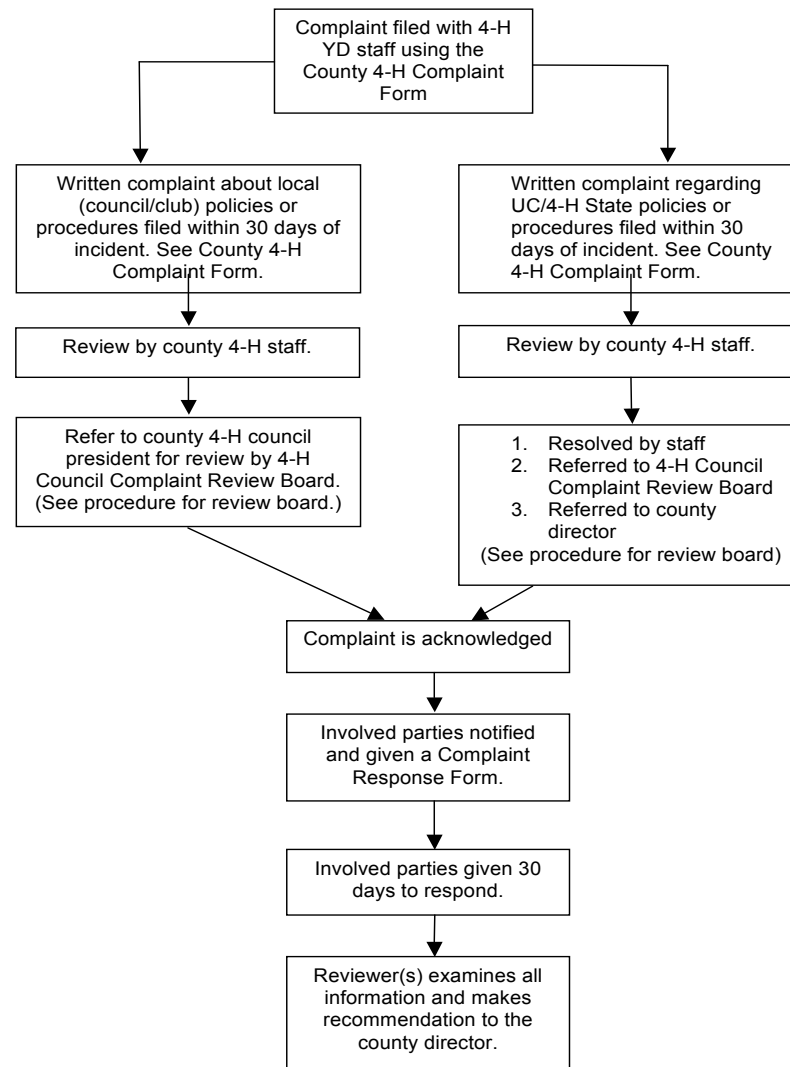
- Use the Complaint Form to report all non-medical incidents that pose no health & safety concerns, potential violations of California 4-H member or adult volunteer code of conduct, violations of UC 4-H YDP policy, or local county 4-H YDP policies.
- Complete all sections of the Complaint Form. Incomplete information can delay addressing the incident.
- Briefly describe the complaint. Include additional information as necessary to complete the report.

*Complaint forms are available on <http://4h.ucanr.edu/> (chapter 6, section 14) or please contact the SBC 4-H Office to request a copy.*



# V. Codes of Conduct

Flow Chart for County 4-H Complaint Process  
(See written details.)



# Santa Barbara County 4-H Publicity and Outreach

Moving into the future...Making the Best Better



**University of California**

Agriculture and Natural Resources ■ 4-H Youth Development Program

## Policies and Procedures Update

- ▶ Copy [hjknowles@msn.com](mailto:hjknowles@msn.com) on reporters submissions to newspapers
- ▶ Copy [hjknowles@msn.com](mailto:hjknowles@msn.com) on your year plan so that I know about special things you are planning in outreach and community service
- ▶ Alert me to any members attending special events ie: State, National etc.
- ▶ Alert me to any special events you are planning in your club. We have better possibility of coverage with these types of events.
- ▶ Send me your press contacts; radio, television and newspapers so that I can keep a master list for press releases.



# Growing Santa Barbara County 4-H

Members		
2011-12	2012-13	2013-14
805	852	789

1 <sup>st</sup> Year Retention		
2011-12	2012-13	2013-14
76%	65%	55%

Numbers Served		
2011-12	2012-13	2013-14
3,811	4,541	12,116

Identify and understand retention barriers.

Translate served groups into members: Food Pantry an excellent example.

Direct Outreach: Flyers in schools, comprehensive message, media presence.



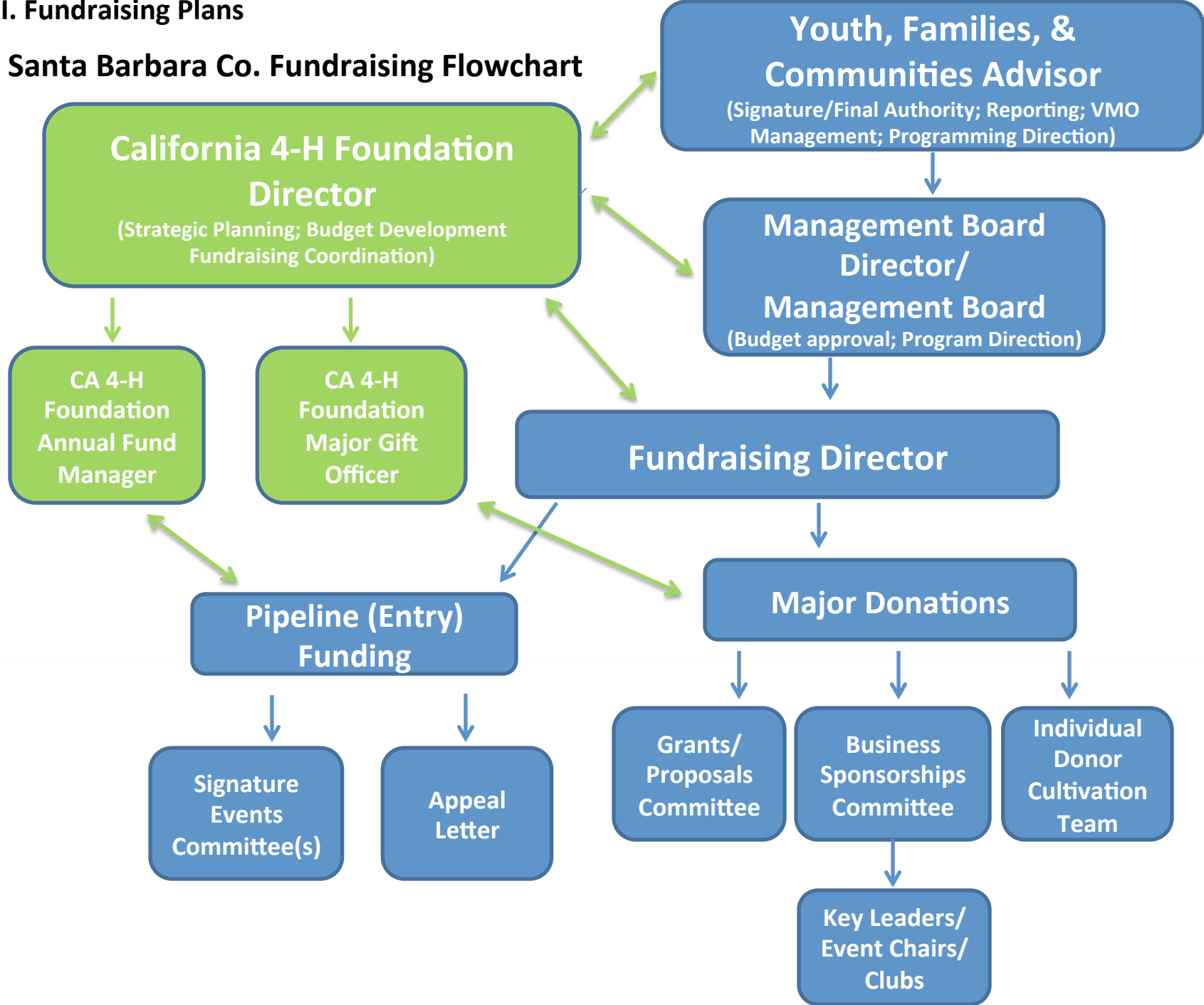
# Creating and Maintaining Diversity

- ▶ Participation in the Intercultural Development Inventory; a program offered through the state to help us develop intercultural relationships.
- ▶ The program will help identify barriers to developing relationships.
- ▶ Work with clubs across the state to develop strategies to be more inclusive.
- ▶ Create goals for ourselves personally and for Santa Barbara County 4-H.
- ▶ Recognize what we are doing right and seeing clearly areas for improvement.



VIII. Fundraising Plans

Santa Barbara Co. Fundraising Flowchart



# Thank you for attending the State of the Santa Barbara County 4-H YDP Address



University of California

Agriculture and Natural Resources | 4-H Youth Development Program