

2013

Fresno County

Annual Crop & Livestock Report





County of Fresno

DEPARTMENT OF AGRICULTURE
LES WRIGHT
AGRICULTURAL COMMISSIONER/
SEALER OF WEIGHTS & MEASURES

Karen Ross, Secretary
California Department of Food and Agriculture

The Honorable Board of Supervisors
County of Fresno

Andreas Borgeas, Chairman
Phil Larson Judith Case McNairy
Henry Perea Deborah A Poochigian
John Navarrette,
County Administrative Officer

It is my pleasure to submit the 2013 Fresno County Agricultural Crop and Livestock Report. This report is produced in accordance with Sections 2272 and 2279 of the California Food and Agriculture Code, and summarizes the acreage, production, and value of Fresno County's agricultural products. The figures contained herein represent gross returns to the producer, and do not reflect actual net profit.

The highlight of this report is that for the first time in 11 years, Fresno County has a new number one crop that exceeds one billion dollars in value - ALMONDS. But this is also the first time in history that Fresno County agriculture has produced two crops each worth over one billion dollars.

The total gross production value of Fresno County agricultural commodities in 2013 was \$ 6,436,628,500. This represents a 2.28 percent decrease from the 2012 production value of \$6,587,266,000. Increases were seen in vegetable crops (3.79% = \$43,560,000), fruit and nut crops (8.33% = \$259,134,000), and nursery products (4.28% = \$1,752,000). Decreases in field crops (41.77% = - \$239,588,000), seed crops (12.73% = - \$5,794,000) livestock and poultry (16.05% = - \$182,857,000) and industrial crops (19.08% = -\$836,000) are also reflected in this report.

I would like to express my appreciation to the many producers, processors, and agencies, both private and public, who supported our efforts in producing this report. I would also like to thank all my staff, especially Fred Rinder, Scotti Walker, Angel Gibson, Rocio Ramirez, Koua Moua and Billy Hopper. Without their hard work and valuable input this report would not be possible.

Sincerely,

Les Wright
Agricultural Commissioner/Sealer



FRESNO COUNTY DEPARTMENT OF AGRICULTURE

Vision, Mission and Values

VISION

Promoting agriculture and a fair marketplace through equal enforcement of laws for the protection of society and the environment.

MISSION

We are committed to:

- **Promoting Fresno County agriculture**
- **Fostering public confidence by assuring a fair and equitable marketplace**
- **Protecting environmental quality through the sound application of pesticide and worker safety regulations**
- **Preserving agricultural land use for future generations**
- **Minimizing the pest risk pathways of exotic and harmful pests**

VALUES

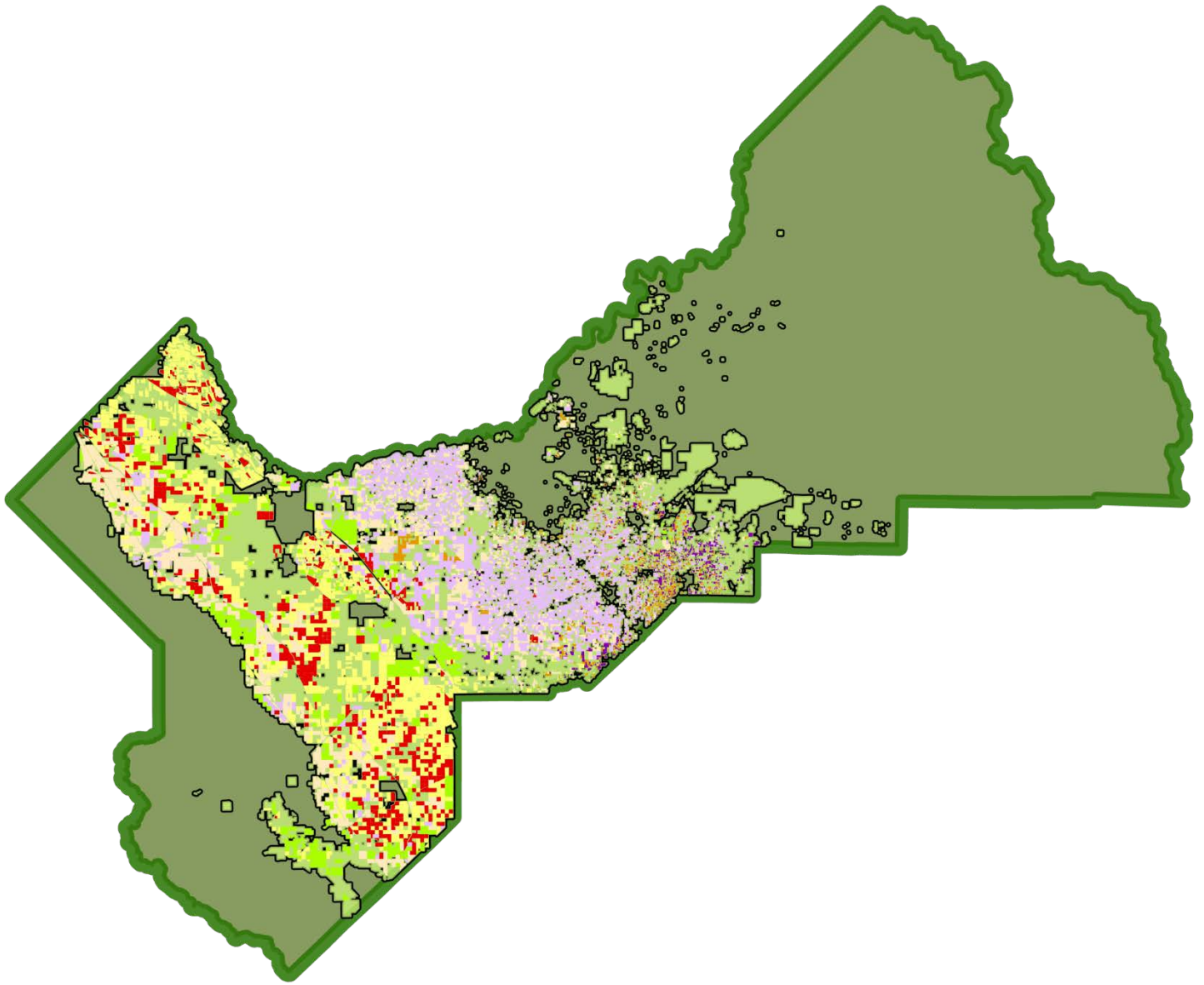
In fulfilling our mission, we commit to:

- **Individual and collective responsibility, integrity and accountability of our actions**
- **Using common sense**
- **Treating people with respect, consistency and fairness**
- **Promoting collaboration and teamwork by encouraging and supporting innovation**
- **Fostering successful partnerships that are consistent with our mission**
- **Taking pride in our work**

“Just give the farmers water,
they will do the rest.”

Anonymous





Fresno County **continues** to be one of the top producing counties in the Nation based on gross value of agricultural production. This map depicts Fresno County's expansive agricultural production areas.

TABLE OF CONTENTS

Page

Fresno County’s 10 Leading Crops	vi
2013 Highlights in Retrospect	vii
Field Crops	1
Seed Crops	3
Vegetable Crops	4
Fruit and Nut Crops	7
Nursery Products	12
Livestock and Poultry	13
Livestock and Poultry Products	15
Apiary Products and Pollination Services	16
Industrial Crops	17
Statistical Comparisons and Summaries	18
Sustainable Agriculture	19
Fresno County’s Export Activity for 2013	21
2013 Organic Farming.....	22
Growth of Fresno County Agriculture	23
Percentage by Crop Category.....	24

This report is also available at our internet site:

<http://www.co.fresno.ca.us/fresnoag>

FRESNO COUNTY'S 10 LEADING CROPS

Crop	2013 Rank	2013 Dollar Value	2012 Rank	2003 Rank	1993 Rank
Almonds	1	\$ 1,109,848,000	2	8	7
Grape	2	1,037,456,000	1	1	1
Poultry*	3	548,204,000	3	5	+
Milk	4	512,276,000	4	6	4
Tomato	5	444,705,000	5	2	3
Cattle and Calves	6	385,214,000	6	4	5
Pistachios	7	242,802,000	8	32	24
Garlic	8	201,312,000	11	12	16
Cotton	9	192,556,000	7	3	2
Oranges	10	149,024,000	13	8	9
Top 10 Total		\$ 4,823,397,000			

+ Not previously combined for ranking purposes.

*Includes Turkeys, Chickens, Ducks, Geese & Gamebirds.

2013 HIGHLIGHTS IN RETROSPECT

January:

Small grain fields and winter forage emerged and were treated for weeds. Alfalfa hay and seed growers removed fall growth and pre-emergent herbicides were applied to new fields. Cotton and safflower beds were formed up and cotton plow-down was completed. Ground for sod was leveled and prepared for seeding. Grape growers pruned and shredded brush, treated vines for fungus and mites, tied vines, repaired trellises/posts, and plowed vineyards. Fruit and nut orchards were pruned and shredded. Orchards received dormant oil applications, fungicide sprays, and berm weed control. Soil was fumigated in preparation for planting of new trees in the spring. Winter vegetables were harvested. Beds were formed and prepared for a variety of vegetables and melons. Garbanzo beans and cover crops emerged. In some parts of the county, blueberry buds were swollen and ready to bloom. Grapefruit, lemon, navel orange, and tangerine were harvested and new groves were planted. Olive harvest was completed. Sheep and cattle grazed rangelands and established alfalfa fields. Rangeland grass was sparse, but showed some signs of growth. Honey Bees were transported from out-of-state to central distribution areas and Almond Alley (along Interstate 5) to be placed in blueberry, almond, and stone fruit orchards for pollination. Beekeepers were concerned there would be a shortage of bees available for the amount of almonds planted.

February:

Irrigated fields of wheat, barley, oats, and winter forage grew well; whereas, dry land fields were stressed and only half their usual height. Spring rain and warming daytime temperatures encouraged new growth in dormant alfalfa fields and cover crops. Safflower and cotton bed formation continued. Growers pruned trees and vines, then shredded the brush. Vineyards received herbicide, fungicide, and miticide treatments. Almonds, cherries, and early varieties of nectarines, plums, and peaches bloomed. Many stone fruit growers placed insect mating disrupters in orchards and fumigated new ground in preparation for future plantings. New almond and wine grape vineyards were planted. The low winter rainfall forced growers of annual crops to pre-irrigate in preparation for planting. Spring broccoli harvest began. Spring head lettuce grew nicely with insecticide treatments applied as needed. Hot caps were placed over spring and summer vegetable seedlings. Garbanzo beans, fall planted garlic, and onions grew well. Beds were shaped and soil fumigated for bell peppers, carrots, cantaloupes, honeydew, and watermelons. The first transplanting of tomatoes occurred this month. Harvest of winter vegetables such as beets, broccoli, cauliflower, cabbage, turnips, daikon, green onions, herbs, the choys, chards, and kales began. Strawberries grew well; blueberries were dormant. The harvest of navel oranges, grapefruit, lemons, and tangerines continued. New citrus groves were planted. Olives were dormant. Sheep and cattle took advantage of newly emerged greening on rangelands. Sheep could also be seen grazing in established alfalfa and small grain fields. Beehives were placed in almond and stone fruit orchards for pollination.

March:

Winter forage and small grain fields grew and received herbicide treatments; seed heads could be seen forming. Cotton was planted and regrowth monitoring was ongoing. Alfalfa hay fields

grew rapidly in the spring weather. Growers shaped beds and prepared ground for next year's field crops. Straggling vineyard operators finished shredding, cutting, and tying canes before vineyards leafed out. Grapevines were treated for mealy bugs and powdery mildew. Growers began treating their stone fruit orchards with bloom sprays for various insect pests; bloom neared its end. The trees of most stone fruit varieties leafed out, initiating the thinning process. New almond, pistachio, and grape vineyards were planted. Pomegranate and walnut orchards were pruned and shredded. Throughout the county, strawberries bloomed, grew, and were harvested. Blueberries bloomed and could be seen growing. The last of winter crops such as broccoli, gailan, cauliflower, cabbage, Swiss chard, collard greens, and kale were harvested. Asparagus harvest was ongoing and onions pushed out new growth. Garlic and garbanzo beans grew nicely. Processing tomato fields were bedded up and received fumigation for various pests. Transplanting for processing tomatoes and other vegetable seedlings began. Carrots were harvested and new fields grew. The spring head lettuce crop harvest began. Olives remained dormant. Foliar fertilizer applications were applied to citrus crops. Citrus was harvested and packed. Local and out-of-state bee hives were removed from almond, pear, and plum orchards. The eastern slope of the Coast Range Mountains remained dry and range conditions poor, but due to recent rain, some grass emerged. Ranchers grazed sheep and cattle.

April:

Fields of irrigated barley, oats, and wheat received herbicide treatments and matured rapidly. Some early planted fields of wheat, oat, and winter forage were harvested as silage and hay for local dairies. Growers were in their summer-long cycle of cutting, windrowing, raking, and baling for the production of alfalfa hay. Alfalfa seed fields, safflower, garbanzo beans, sugar beets, and corn plantings grew. Cotton growers prepared ground and began planting. Almonds, apricots, cherries, grapes, nectarines, peaches, persimmons, pistachios, plums, pomegranates, prunes, and walnuts all grew well. Grape and tree fruit growers treated to control fungus, mildew, mites, and codling moth. Peach and nectarine orchards were thinned. Excessive winds early in the month knocked almond nuts to the ground, broke limbs, and toppled some trees, leaving growers to clear away debris. Some early cherries were harvested and packed. Farmers planted new almond, pistachio, and grapes before the rise in temperature. Spring crops of bell peppers, onion, and garlic could be seen growing. Harvest of asparagus was still in progress, but broccoli and spring lettuce harvest came to an end. Farmers transplanted processing tomatoes and prepared beds for bell peppers, cantaloupe, honeydew, and watermelon. Cabbage, carrots, sweet corn, and market heirloom tomatoes grew nicely. Harvest of cauliflower, cucumbers, sugar snap peas, snow peas, onions, garlic, fava beans, and hot-housed herbs was in full swing. Blueberry and strawberry harvest progressed. Citrus bloom was declared for all districts. Range conditions were poor. Bees were relocated from almond, pear, and plum orchards and placed in citrus groves.

May:

Growers prepared equipment for harvest as wheat, oat, and barley dried. Fields of winter forage and wheat matured and were chopped for silage and hay. Flooded rice beds were constructed, seeded, and irrigated. Earlier planted beds of rice emerged above the water line. Growers were in their summer-long cycle of cutting, windrowing, raking, and baling for the production of alfalfa and oat hay. Cotton emerged from recently planted beds. Safflower, sugar beets, garbanzo beans, and corn grew, with sticky corn being the first to harvest. Reports of high winds breaking tree limbs and knocking nuts to the ground remained a factor for almond growers. Irrigation, soil fumigation, fungicide, herbicide, and insecticide treatments were applied to established and newly planted vineyards and orchards. Grapes were in bloom and growers applied sulfur and Gibberellic acid to elongate clusters. Almonds, Asian pears, apricots, interspecific apricots, cherries, nectarines, peaches, plums, and interspecific plums were harvested and packed. Onions and garlic dried and neared harvest. Processing tomatoes were hit hard with curly top virus forcing growers to apply insecticides in hopes of preventing further contamination by leafhoppers. Harvest of winter vegetables such as broccoli and cauliflower wound down; asparagus and cabbage harvest concluded. Bell peppers, carrots, market heirloom tomatoes, and seed lettuce grew well under irrigation. Cucumbers, fava and green beans, daikon, green and red onions, sugar snap and snow peas, squash, and hot-housed herbs were harvested. Watermelon, cantaloupe, and honeydew crops bloomed. Blueberries and strawberries were harvested. Citrus fields were treated with foliar nutrients and thrip sprays. Netting was removed from seedless varieties of mandarin groves. Rangeland conditions were poor and very dry. Beekeepers removed hives from almond orchards and placed them in squash and melon fields for pollination, and in citrus groves for honey production. Sheared sheep grazed on small grain, alfalfa, and idle fields.

June:

Barley, oats, and wheat were harvested. Rice fields were flooded and treated with herbicides. Cutting, windrowing, raking, and baling for the production of alfalfa hay continued. Applying insecticides, tilling between furrows to control weeds, and irrigating, produced good stands in cotton. Garbanzo beans and safflower dried down before harvest began. Walnut and pistachio trees showed good growth, while almond hulls appeared ready to split. Whitewash was applied to trees by some growers to prevent sunburn. Wine, table, and raisin grapes received sulfur applications to prevent mildew. Harvest for apricot and cherry concluded; peach, plum, and nectarine harvest was in full swing. Orchard activities included discing and applying fungicide/herbicide/insecticide treatments as needed. Growers conserved water during irrigation in any way possible. Apricots, interspecific apricots, nectarines, peaches, plums, and interspecific plums were all harvested, packed, and exported. Symptoms of curly top virus remained present in a number of processing tomato fields. Harvest began for sweet corn, carrots, and market heirloom tomatoes. Garlic, parsley, kale and broccoli for seed production were harvested; good growth was shown by seed lettuce. Melons, eggplant, cucumber, and squash were transplanted and seeded by growers. Asian cucumbers, bittermelon, choys, chards, kales, cherry tomatoes, regular and pickling cucumbers, daikon, eggplant, green onions, green and yellow beans, herbs, lemon grass, long beans, spinach, squash, tomatillos, turnips, and zucchini grew nicely. The first cantaloupes and honeydews were picked mid-June. The

Westside harvest of blueberries and cherries was complete, but continued throughout the remaining Districts. Harvesting continued for heat-tolerant strawberry varieties. Olive bloom concluded and fruit sized. Grapefruit, lemons, oranges, and tangelos were packed. Ranchers supplemented with baled hay due to poor rangeland conditions. The eastern slope of the Coast Range Mountains was dry. Seed alfalfa fields were visited by honey and leaf cutter bees and beehives were removed from citrus areas and placed in cucurbit, melon, and squash fields.

July:

Small grain crops were harvested. Rice was flooded and growers conducted weed control. Cotton grew well and growers irrigated. Fields of alfalfa for hay production were irrigated, cut, windrowed, baled, and stacked. Most seed alfalfa finished blooming and harvest began. Garbanzo harvest came to an end and safflower fields dried down. Sugar beets, sorghum, and silage corn grew well. Orchard floors received herbicide, insecticide, and fungicide treatments. Vineyards were treated for weeds and mildew; some showed mite damage on canopy top. Harvest of table grapes began. Peach and nectarine harvest was ongoing. Walnuts, pistachios, almonds, persimmons, plums, and pomegranates matured and showed good growth. Harvest was fully underway for onion, garlic, tomato, carrots, cucumbers, snow peas, sugar snap peas, eggplant, daikon, peppers, and squash. Sweet corn was picked and the remaining stalks were shredded for animal feed. Seed lettuce fields bolted and set seed. Strawberry harvest was complete, while blueberries still grew and were harvested. Growers began harvesting cantaloupe, honeydew, and watermelon. Olives grew nicely. New citrus groves were planted and citrus harvest was complete. Grapefruit, lemons, Valencia oranges, and tangelos were packed. Range conditions were poor and the eastern slope of the Coast Range Mountains remained dry. Bee hives were in place for melon season. Sheep and cattle grazed on rangelands and cutter bees were left in alfalfa fields for pollination.

August:

Small grain harvest was completed. Rice was flooded and grew tall. Seed alfalfa fields were desiccated in order to harvest. Growers cut, windrowed, raked, and baled for the production of alfalfa hay. Cotton fields matured; some plants set bolls, while the bolls on other plants opened. Sugar beets were irrigated and grew well. Sorghum and silage corn harvest progressed. Raisin harvest was underway. Dried on the Vine (DOV) vineyards cut canes and grapes were drying on the vine. Zante Currants harvested for raisins were cigar rolled. Harvesting of Thompson Seedless grapes for raisins was ongoing as well as wine and table grape harvest. Plastic tarps were placed on some table grape vineyards in order to protect the crop from rain. Almond harvest was in full swing; growers shook trees, swept, loaded bin trailers, and hauled nuts to hulling companies. Pistachios and walnuts showed good growth and matured. Nectarines, peaches, persimmons, plums, and pomegranates grew well and were irrigated. California peaches and nectarines were exported to Australia for the first time. Raisins, almonds, walnuts, dry prunes, apple pears, apricots, peaches, nectarines, plums/pluots, and grapes were packed. Harvest of onions, garlic, tomatoes, carrots, bell peppers, summer squash, cucumbers, beets, bittermelon, Swiss chard, bok choy, gai choy, yu choy, beans, kale, lemongrass, peppers, spinach, turnips, green onions, daikon, eggplant, parsley, sweet corn, garbanzo beans, and hot-housed herbs was ongoing. Land preparation for fall strawberry

plantings included weeding and bed preparation. Market and heirloom tomato harvest was completed. Cantaloupe, honeydew, and watermelon harvest was ongoing. New orange and mandarin orchards were planted. Oranges sized and olives grew well. Rangeland was dry, forcing ranchers to supplement with baled hay. Ranchers grazed sheep and cattle on grain fields and idle fields. Cutter bees completed their job in seed alfalfa fields. Beehives were in and around fall melon and squash fields for pollination.

September:

Rice fields remained flooded and continued to grow and mature. Alfalfa growers cut, windrowed, raked, and baled for alfalfa hay. Seed alfalfa harvest continued but slowed. Cotton growers applied defoliate to their fields and prepared for harvest by knocking down irrigation ditches and getting pickers, tractors, and module-makers ready. Grain sorghum, sugar beets, and silage corn were harvested. Harvest of almonds, pistachios, and walnuts began with nuts being shaken, swept into windrows, and hauled in for processing. Table, juice, dried-on-vine grapes for raisins, and wine grapes were harvested. Grape growers covered late season table grapes with plastic; terraced vineyard drives were re-leveled and vines were irrigated. There was an unexpected burst of rain, but no reports of significant damage. Labor was a significant factor for raisin growers as raisin grape harvest peaked. Orchards and vineyards had fungicide, herbicide, and/or miticide treatments applied as needed. Harvesting of early varieties of pomegranates began this month. Harvest continued for apples, apricots, Asian pears, prunes, peaches, nectarines, plums/IS plums, pluots, table grapes, cantaloupes, carrots, sweet corn, cucumbers, eggplant, garlic, honeydew melons, onions, parsley, peppers, summer squash, processing tomatoes, and watermelon. Seed lettuce harvest concluded. Head lettuce fields were treated to control insects and early fields showed head formation. Fall acreage for head lettuce was down approximately 50 percent from last year's production. Fall broccoli fields emerged and transplanted crops of eggplant, cucumber, squash, green bean, and strawberries developed well. Pumpkins for the fall season neared harvest-time. Land preparation for fall strawberry plantings began with weeding and bed preparation. Olives and citrus fruit grew nicely. Growers prepared to harvest the new crop of Navel oranges as they waited for cooler nights to help the fruit color. Rangeland conditions were poor due to lack of rain, but sheep and cattle grazed in addition to being fed baled hay. Sheep were also placed in dry land fields, harvested wheat fields, and retired fields to graze. Bee hives were placed around squash plantings and remained in place for melon season.

October:

Beds were prepared for winter forage of wheat, barley, and oats by leveling land, putting up borders, and pre-irrigating. Rice harvest was ongoing. Cotton fields were at various stages of production. In different parts of the county, growers applied final defoliation, harvested, or plowed down what remained of cotton in fields. Alfalfa for hay production slowed; fields were cut, windrowed, and baled. Seed alfalfa harvest was completed in some districts while it continued in others. Sorghum grew nicely. Silage corn harvest was ongoing. Table grapes were harvested, while wine grape and raisin harvest came to an end. Growers hauled binned raisins to packing houses for further processing. Table grape vineyards were covered with plastic to protect against rain. Almond, pistachio, and walnut harvest continued throughout the districts

and neared completion. Pomegranate harvest was ongoing. Growers fumigated acreage for replanting after old vineyards and orchards were pulled out. Raisins, prunes, figs, apricots, apples, walnuts, almonds, kiwis, Asian pears, peaches, nectarines, plums/IS plums, table grapes, pomegranates, mandarins, lettuce and onion seed, and garlic were packed. Harvest of all melons including watermelon, cantaloupe, honeydew, and mixed melon ended this month while fall strawberry and head lettuce harvest began. Growers harvested bell peppers, carrots, fresh corn, cucumbers, eggplant, garlic, green beans, onions, parsley, pumpkins, summer squash, and processing tomatoes. Asparagus and broccoli sized. New garlic, onion, and asparagus fields were planted. Navel orange and mandarin harvest began this month and new citrus groves were planted. Lemons, pomelos, and grapefruit were packed. Olives began to be harvested. Rangeland conditions were poor due to lack of rain. Cattle were placed on rangelands to graze in addition to being fed baled hay. Sheep were placed on dry fields, harvested wheat fields, retired fields, and rangeland to graze.

November:

Planted fields of wheat, barley, and oats emerged; irrigation continued. Farmers prepared new beds for winter forage and triticale. Alfalfa for hay production slowed as the weather cooled. Seed alfalfa fields were mowed and sat idle while fields regrew after seed harvest activities. Most cotton harvest was completed; some fields received herbicide and defoliation treatments. Harvested cotton fields were shredded and disced to comply with plow-down requirements. Silage corn, sorghum, and milo were harvested. Due to the scarce amount of rain, many growers irrigated their orchards. Peach and nectarine growers topped trees and applied nutrients and fertilizers to orchard floors. Pruning in fruit trees began. Pistachio, almond, walnut, and pomegranate harvest ended in most parts of the county. The processing of stored almonds was ongoing. Walnut harvest began and pomegranates were harvested for juice. Grape growers planted cover crops and spread organic material in their vineyards to increase levels of nutrients in the soil. Harvest of fall strawberries, sweet corn, and table grapes neared completion. Harvest of processing tomatoes ended. Winter squash, daikon, bok choy, napa cabbage, bell peppers, broccoli, carrots, chili peppers, parsley, and green beans were harvested. Head lettuce harvest began this month and with it came preparations for spring lettuce. Asparagus fields were topped and shredded in preparation for spring harvest. Lemons, mandarins, oranges, and pomelos were harvested. Olives grew nicely. Bees were removed from melon sites. Ranchers left sheep and cattle to graze on dry rangelands and supplemented with baled hay. Sheep were also placed in dry, harvested, and retired fields to graze.

December:

Most fall plantings of winter forage, wheat, barley, and oats did well and were treated with herbicides, alas some fields showed slow growth due to frost damage. Alfalfa fields entered dormancy with the cold weather. The vast majority of cotton fields in the county were in compliance with the final cotton plow-down deadline. Growers shaped beds and prepared ground for next year's field crops. Almond and pistachio growers cleaned orchard floors. Pruning of fruit trees and vineyards was in full swing. Persimmons were harvested and packed. Broccoli harvest was ongoing. Next year's processing tomato fields were bedded up and received fumigation. Carrots were harvested and new carrot fields grew nicely. Parsley harvest

was completed. Garlic and onions grew slowly in the cold weather. Bok choy, cabbage, napa cabbage, cauliflower, chard, collard greens, daikon, kale, and winter squash were harvested. Newly planted spring lettuce and citrus fields showed frost damage. Export shipments of citrus decreased due to freeze damage; packing sheds were busy trying to cull out affected fruit. The eastern slope of the Coast Range Mountains was dry and range conditions were poor. Bees were moved in preparation for almond pollination in the spring. Rangeland conditions remained dry due to lack of rain, forcing ranchers to supplement feed for cattle with baled hay. Sheep grazed in a few alfalfa fields.

FIELD CROPS:

The total gross returns for field crops decreased by \$239,588,000 or 41.77 percent from \$573,606,000 in 2012 to \$413,859,000 in 2013. This was due in large part to significant decreases in the harvested acreages barley, silage corn and cotton. Barley decreased in total value by 83.5 percent as harvested acreage was reduced by over 86 percent a reduction of 23,340 acres. Total cotton value was down 29.31 percent as acreage decreased by over 40,000 acres. Silage corn was down 32.22 percent as acreage decreased by 33.64 percent. The value of wheat was up 33.19 percent with increases in acreage, production per acre and price. Beans, dry increased in value by 85.36 percent due to a significant increase in the harvested acreage up 86.14 percent from the previous year.

SEED CROPS:

The total gross returns for all seed crops decreased by 12.73 percent to \$39,706,000, down \$5,794,000 from the 2012 total. The value of certified cotton seed increased 88% to \$517,000 due to a significant increase in both acreage and price. The value of certified alfalfa seed increased from \$19,318,000 in 2012 to \$23,766,000 in 2013 an increase of \$4,448,000 as acreage increased by over 39.00 percent. Vegetable seed decreased in total value by 41.89 percent while the seed other category decreased by 36.78 percent both due to a reduction of acreage.

VEGETABLE CROPS:

The total value for all vegetable crops was \$1,186,788,000 in 2013 up 3.79 percent from 2012. Asparagus decreased in total value by 67.3 percent, due to a decrease in harvested acreage along with a decrease in production per acre and price per ton. Squash experienced an increase in both per acre production and price per ton, but decreased in total value by 59.19 percent due to an over 60 percent reduction in harvested acres. Fresh garlic showed an increase in total value of 52.01 percent due to an increase in total harvested acres, per acre yield along with an increase in the price per ton. The value of processed garlic was up 32.04 percent with increased acreage and per acre production. Fresh standard and cherry tomatoes increased by \$34,964,000 up 58.83 percent. Processed tomatoes decreased slightly in total value by 6.40 percent despite an increase in both acreage and price due to a reduction in per acre yield.

FRUIT AND NUT CROPS:

Fruit and nut crops increased in total value by 8.33 percent to \$3,204,954,000. For the first time in over a decade a new crop moves to the number one spot of the county's top ten crop list. Almonds surpassed the billion dollar mark in 2013 increasing 16.57 percent over 2012 with a total value of \$1,109,848,000. Grapes another billion dollar crop that had topped the list for the past 11 years, moved to the number two spot in 2013 with a total value of \$1,037,456,000 a slight decrease of 6.2 percent from last year. Oranges increased by over 18% with a value of \$149,024,000. Fresh lemons with increases in both production per acre and price were up 68.86 percent. Apricots were down 78.48 percent from last year with a substantial decrease in per acre yield along with a reduction in the per ton price. Apples with increases in both harvested acreage and per acre production were up in value by 78.52 percent. Pomegranates decreased in value by \$8,216,000 or 38.77 percent due to significant decreases in both harvested acres and price per ton.

NURSERY:

The value of nursery products increased by \$1,751,000 in 2013 to \$42,703,000 an increase of 4.28 percent from 2012. Herbaceous ornamentals decreased in total value by 3.71 percent to \$5,054,000 the other category, which includes bareroot fruit trees, Christmas trees, citrus buds, grapes (rooting and cuttings), vegetable transplants, turf, and edible plants decreased in value by 33.03 percent to \$21,664,000. Ornamental trees & shrubs had a 2013 value of \$15,985,000.

LIVESTOCK AND POULTRY:

The total gross returns for livestock and poultry for 2013 was \$956,767,000, which is a decrease of 16.05 percent from the 2012 total of \$1,139,624,000. Cattle and calves increased in value by 1.29 percent or \$4,905,000 from the 2012. The value of slaughter stock increased by 5.52 percent to \$182,580,000, due to an increase in total live weight sold, coupled with an increase in the price. The value of hogs and pigs decreased by 11.67 percent due to a decrease in the price per hundred weight. The total value for lambs decreased by 34.50 percent due to a decrease in the lamb price per hundred weight. Other livestock category, which includes chickens, ducks, fish, game birds, goats, beneficial insects, squab, turkeys, and vermiculture had a total of \$549,252,000.

LIVESTOCK AND POULTRY PRODUCTS:

The total value for livestock and poultry products increased by \$60,593,000 or 13.00 percent, to \$526,564,000. Manure decreased in value by 34.51 percent from \$5,106,000 in 2012 to \$3,344,000 in 2013 due to a decrease in the price per ton. Prices for both market and manufacturing milk increased this year to \$18.78 for market, and \$19.15 for manufacturing. The price per dozen for hatching egg production decreased this year by 20.24 percent, however total production was up by 26.47 percent, resulting in an overall increase in value of .87 percent.

APIARY PRODUCTS AND POLLINATION SERVICES:

Gross returns for apiary and pollination services were \$61,742,000 in 2013 up \$3,447,000 from 2012. Pollination values increased in all crop categories. Pollination of both melon and vegetable crops each increased by over 20 percent while pollination of tree fruit & nut crops increased by \$1,780,000 to \$53,608,000 and pollination of seed crops increased by 14.51 percent to \$1,081,000. The gross value of apiary products also increased with honey up 21.45 percent to \$4,931,000 and the value of beeswax up 89.86 percent to \$936,000 mainly due to an increase in total production.

INDUSTRIAL CROPS:

Industrial crop values decreased to \$3,545,500 down 19.08 percent from 2012. Firewood increased in value by 5.41 percent, while the other category, which includes fence posts, green compost, and wood chips for biomass and landscaping, showed a decrease of 58.00 percent. Timber saw an increase of 53.56 percent to a value of \$2,331,000.

FRESNO COUNTY

FIELD CROPS

CROP	YEAR	HARVESTED ACREAGE	PRODUCTION		UNIT	VALUE	
			PER ACRE	TOTAL		PER UNIT	TOTAL
Barley	2013	3,660	1.91	6,990	ton	\$ 329.00	\$ 2,300,000
	2012	27,000	1.68	45,400	ton	\$ 307.00	\$ 13,938,000
Beans, dry ^a	2013	9,344	1.51	14,100	ton	\$ 957.00	\$ 13,494,000
	2012	5,020	1.45	7,280	ton	\$ 1,000.00	\$ 7,280,000
Corn							
Grain	2013	1,440	6.04	8,700	ton	\$ 215.00	\$ 1,871,000
	2012	1,200	7.20	8,640	ton	\$ 250.00	\$ 2,160,000
Silage	2013	28,800	22.95	661,000	ton	\$ 50.00 ^b	\$ 33,050,000
	2012	43,400	24.42	1,060,000	ton	\$ 46.00 ^b	\$ 48,760,000
Cotton							
Upland Lint	2013	13,600	2,320 ^c	63,100 ^d	bale	\$ 0.70 ^e	\$ 22,262,000
	2012	19,500	1,662 ^c	64,800 ^d	bale	\$ 0.78 ^e	\$ 25,474,000
Seed	2013			22,700	ton	\$ 400.00 ^e	\$ 9,080,000
	2012			22,700	ton	\$ 375.00 ^e	\$ 8,513,000
Pima Lint	2013	48,700	1,745 ^c	170,000 ^d	bale	\$ 1.58 ^e	\$ 135,374,000
	2012	83,000	1,827 ^c	303,000 ^d	bale	\$ 1.29 ^e	\$ 196,998,000
Seed	2013			68,000	ton	\$ 380.00	\$ 25,840,000
	2012			119,000	ton	\$ 348.00	\$ 41,412,000
Cotton Total^f	2012	62,300				\$	192,556,000
	2012	102,500				\$	272,397,000
Hay							
Alfalfa	2013	53,800	7.79	419,000	ton	\$ 232.00	\$ 97,208,000
	2012	72,200	7.41	535,000	ton	\$ 207.00	\$ 110,745,000
Other ^g	2013	13,030	2.65	34,500	ton	\$ 207.00	\$ 7,142,000
	2012	24,100	4.45	107,000	ton	\$ 153.00	\$ 16,371,000

FRESNO COUNTY

FIELD CROPS

CROP	YEAR	HARVESTED ACREAGE	PRODUCTION		UNIT	VALUE		
			PER ACRE	TOTAL		PER UNIT	TOTAL	
Pasture and Range								
Rangeland Grazing	2013	825,000			acre	\$ 7.00	\$ 5,775,000	
	2012	825,000			acre	\$ 13.00	\$ 10,725,000	
Wheat	2013	48,200	2.76	133,000	ton	\$ 276.00	\$ 36,708,000	
	2012	38,000	2.74	104,000	ton	\$ 265.00	\$ 27,560,000	
Other^h	2013	74,300					\$ 23,755,000	
	2012	131,340 *					\$ 63,670,000 *	
Total	2013	1,119,874					\$ 413,859,000	
	2012	1,269,760					\$ 573,606,000	

a Includes garbanzo and lima

b Field price

c Pounds of lint per acre

d 500 pounds lint per bale

e Price per pound, 504 pounds gross weight per bale

f Does not include cotton seed for planting

g Includes hay from: oats, sudangrass, triticale, wheat, and winter forage

Includes field stubble (includes acres not included in total field crop acreage), irrigated pasture, oat grain, rice (grain and bran), safflower, silage

h (alfalfa, barley, oat, sorghum, triticale, wheat and winter forage), straw; **ORGANIC:**alfalfa and rice

* **Revised**



FRESNO COUNTY

SEED CROPS

CROP	YEAR	HARVESTED ACREAGE	PRODUCTION		UNIT	VALUE			
			PER ACRE	TOTAL		PER UNIT	TOTAL		
Alfalfa Certified	2013	10,400	828	8,611,000	lb	\$	2.76	\$	23,766,000
	2012	7,450	885	6,593,000	lb	\$	2.93	\$	19,318,000
Cotton ^a Certified	2013	308		1,231,000	lb	\$	0.42	\$	517,000
	2012	920		1,249,000	lb	\$	0.22	\$	275,000
Vegetable ^b	2013	1,360						\$	10,873,000
	2012	1,830						\$	18,710,000
Other ^c	2013	3,850						\$	4,550,000
	2012	4,480						\$	7,197,000
Total	2013	15,610						\$	39,706,000
	2012	13,760						\$	45,500,000

a Included in field crop acreage

b Blackeye, broccoli, daikon, garbanzo, garlic, jojoba bean, kale, kohlrabi, lettuce (head & leaf), misc. vegetable, mustard, onion, radish and tomato

c Alfalfa non-certified, barley, cotton non-certified, triticale, and wheat



FRESNO COUNTY

VEGETABLE CROPS

CROP	YEAR	HARVESTED ACREAGE	PRODUCTION		UNIT	VALUE		
			PER ACRE	TOTAL		PER UNIT	TOTAL	
Asparagus	2013	2,340	2.03	4,750	ton	\$ 2,449.00	\$ 11,633,000	
	2012	3,060	3.95	12,100	ton	\$ 2,940.00	\$ 35,574,000	
Bell Peppers ^a	2013	1,100	20.64	22,700	ton	\$ 585.00	\$ 13,280,000	
	2012	2,340	16.53	38,700	ton	\$ 553.00	\$ 21,401,000	
Broccoli	2013	4,330	10.23	44,300	ton	\$ 536.00	\$ 23,745,000	
	2012	8,020	6.76	54,200	ton	\$ 565.00	\$ 30,623,000	
Corn, Sweet	2013	9,760	9.38	91,500	ton	\$ 425.00	\$ 38,888,000	
	2012	12,800	7.22	92,400	ton	\$ 359.00	\$ 33,172,000	
Eggplant ^b	2013	510	20.98	10,700	ton	\$ 864.00	\$ 9,245,000	
	2012	890	14.45	12,900	ton	\$ 580.00	\$ 7,482,000	
Garlic	Fresh	2013	6,200	8.65	53,600	ton	\$ 2,920.00	\$ 156,512,000
		2012	5,100	8.41	42,900	ton	\$ 2,400.00	\$ 102,960,000
	Processed	2013	13,100	8.56	112,000	ton	\$ 400.00	\$ 44,800,000
		2012	10,700	7.89	84,400	ton	\$ 402.00	\$ 33,929,000
Head Lettuce								
				17,600	ton			
				44,800	ton			
				20,300	ton			
Spring	2013	5,630	14.69	82,700	ton	\$ 359.00	\$ 29,689,000	
Season Total	2012	5,780	16.56	95,700	ton	\$ 294.00	\$ 28,136,000	
				18,300	ton			
				50,500	ton			
				19,200	ton			
Fall	2013	4,570	19.26	88,000	ton	\$ 375.00	\$ 33,000,000	
Season Total	2012	8,200	14.41	118,200	ton	\$ 325.00	\$ 38,415,000	
Head Lettuce	2013	10,200		170,700			\$ 62,689,000	
Totals	2012	13,980		213,900			\$ 66,551,000	
Lettuce Leaf ^c	2013	7,670	12.65	97,000	ton	\$ 661.00	\$ 64,117,000	
	2012	7,340	11.17	82,000	ton	\$ 740.00	\$ 60,680,000	



FRESNO COUNTY

VEGETABLE CROPS

CROP	YEAR	HARVESTED ACREAGE	PRODUCTION		UNIT	VALUE		
			PER ACRE	TOTAL		PER UNIT	TOTAL	
Melons								
Cantaloupe ^a	2013	15,000	16.80	252,000	ton	\$	366.00	\$ 92,232,000
	2012	15,600	16.86	263,000	ton	\$	296.00	\$ 77,848,000
Honeydew	2013	4,540	18.46	83,800	ton	\$	330.00	\$ 27,654,000
	2012	5,000	15.24	76,200	ton	\$	474.00	\$ 36,119,000
Mixed Melons ^d	2013	3,330	14.99	49,900	ton	\$	333.00	\$ 16,617,000
	2012	2,030	15.71	31,900	ton	\$	404.00	\$ 12,888,000
Watermelon	2013	2,420	18.80	45,500	ton	\$	398.00	\$ 18,109,000
	2012	2,360	18.98	44,800	ton	\$	475.00	\$ 21,280,000
Melon Total	2013	25,290						\$ 154,612,000
	2012	24,990						\$ 148,135,000
Onions								
Fresh	2013	5,710	30.65	175,000	ton	\$	282.00	\$ 49,350,000
	2012	6,920	30.64	212,000	ton	\$	322.00	\$ 68,264,000
Processed	2013	13,700	18.61	255,000	ton	\$	154.00	\$ 39,270,000
	2012	15,500	18.84	292,000	ton	\$	138.00	\$ 40,296,000
Onion Total	2013	19,410						\$ 85,910,000
	2012	22,420						\$ 108,560,000
Oriental Vegetables ^e	2013	630	12.02	7,570	ton	\$	1,009.00	\$ 7,638,000
	2012	2,031	6.21	12,600	ton	\$	758.00	\$ 9,551,000
Squash ^f	2013	700	10.46	7,320	ton	\$	670.00	\$ 4,904,000
	2012	1,950	10.09	19,700	ton	\$	610.00	\$ 12,017,000



FRESNO COUNTY

VEGETABLE CROPS

CROP	YEAR	HARVESTED ACREAGE	PRODUCTION		UNIT	VALUE		
			PER ACRE	TOTAL		PER UNIT	TOTAL	
Tomatoes								
Standard and Cherry	2013	10,600	19.53	207,000	ton	\$	456.00	\$ 94,392,000
	2012	8,430	19.71	166,000	ton	\$	358.00	\$ 59,428,000
Processed	2013	101,000	50.27	5,077,000	ton	\$	69.00	\$ 350,313,000
	2012	97,600	56.39	5,504,000	ton	\$	68.00	\$ 374,272,000
Tomatoes Total	2013	111,600						\$ 444,705,000
	2012	106,030						\$ 433,700,000
Other ^g	2013	9,020						\$ 61,400,000
	2012	9,370						\$ 45,370,000
Total	2013	221,860						\$ 1,186,788,000
	2012	231,021						\$ 1,149,705,000

- a Includes fresh and processed
- b Includes Chinese, Globe, Indian, Italian, Japanese and Thai varieties
- c Includes Red, Green, Butter, and Romaine varieties
- d Includes mixed unspecified varieties.
- e Includes amaranth, bitter melon (fruit and leaf), bok choy (baby, regular and Shanghai), napa cabbage, chayote, choy sum, daikon, doan gwa, gai choy, gailon, kabocha (fruit), lemon grass, lo bok, long beans, methi, moqua, mora, okra leaf (saluyote), opo, sinqua (ribbed & smooth), sugar peas (fruit and leaf), snow pea, sugar cane, sour leaf, taro, tatsoi, tong ho, yam (root and leaves), and yu choy
- f Includes summer and winter varieties
- g Includes arugula, succulent beans (fresh-fava, garbanzo and green snap), beets, cabbage (fresh & processed), carrots (fresh), cauliflower, celery, collards, corn (processed-cornnuts and tortilla chips), cucumbers (market & pickling), dandelion greens, mustard (fresh), gourds, jicama (yam beans), kale, kohlrabi, leeks, mushrooms, okra, onions (green), peas, peanuts, peppers, chili, potatoes, pumpkins, radishes, spinach (fresh & processed), sunchokes, Swiss chard, tomatillos, turnips; herbs: basil, cilantro, dill, fennel, mint, and parsley (dry and fresh); **ORGANIC**: succulent beans, broccoli, cantaloupe, carrot (fresh), celery, corn (processed-popcorn and sweet), eggplant, kale (processed), leaf lettuce, melon (honeydew), onion, shallot, spinach (processed), squash (summer & winter), tomatoes (standard and processed) and watermelon



FRESNO COUNTY

FRUIT AND NUT CROPS

CROP	YEAR	HARVESTED ACREAGE	PRODUCTION			VALUE	
			PER ACRE	TOTAL	UNIT	PER UNIT	TOTAL
Almonds^a	2013	162,220	1.23	200,000	ton	\$ 5,249.00	\$ 1,049,800,000
	2012	153,848	1.34	206,000	ton	\$ 4,251.00	\$ 875,706,000
Almond Hulls	2013			432,000	ton	\$ 139.00	\$ 60,048,000
	2012			509,000	ton	\$ 150.00	\$ 76,350,000
Almond Total	2013						\$ 1,109,848,000
	2012						\$ 952,056,000
Apples^a	2013	627	20.11				
	2012	448	14.15				
Fresh	2013			10,100	ton	\$ 1,243.00	\$ 12,554,000
	2012			4,550	ton	\$ 1,538.00	\$ 6,998,000
Processed	2013			2,510	ton	\$ 90.00	\$ 226,000
	2012			1,790	ton	\$ 90.00	\$ 161,000
Apple Total	2013						\$ 12,780,000
	2012						\$ 7,159,000
Apricots^a	2013	1,061	3.44	3,650	ton	\$ 905.00	\$ 3,303,000
	2012	1,474	9.97	14,700	ton	\$ 1,044.00	\$ 15,347,000
Cherries	2013	4,079	2.90	11,800	ton	\$ 4,099.00	\$ 48,368,000
	2012	3,962	2.76	10,900	ton	\$ 3,820.00	\$ 41,638,000
Citrus	2013	2,651	13.84				
Lemons^a	2012	2,554	10.50				
Fresh	2013			36,700	ton	\$ 841.00	\$ 30,865,000
	2012			26,800	ton	\$ 682.00	\$ 18,278,000
Oranges							
Navel^a	2013	24,520	12.31				
	2012	21,086	14.02				
Fresh	2013			269,000	ton	\$ 506.00	\$ 136,114,000
	2012			228,000	ton	\$ 457.00	\$ 104,196,000
Processed	2013			32,900	ton	\$ 65.00	\$ 2,139,000
	2012			67,600	ton	\$ 69.00	\$ 4,664,000

FRESNO COUNTY

FRUIT AND NUT CROPS

CROP	YEAR	HARVESTED ACREAGE	PRODUCTION			VALUE	
			PER ACRE	TOTAL	UNIT	PER UNIT	TOTAL
Valencia^a	2013	2,390	14.69				
	2012	2,648	18.56				
Fresh	2013			28,900	ton	\$ 327.00	\$ 9,450,000
	2012			35,100	ton	\$ 448.00	\$ 15,725,000
Processed	2013			6,200	ton	\$ 213.00	\$ 1,321,000
	2012			14,100	ton	\$ 115.00	\$ 1,622,000
Orange Total	2013	26,910					\$ 149,024,000
	2012	23,734					\$ 126,207,000
Tangerine/ Mandarin^a	2013	8,778	8.98				
	2012	8,135	10.07				
Fresh	2013			78,800	ton	\$ 941.00	\$ 74,151,000
	2012			81,900	ton	\$ 935.00	\$ 76,577,000
Citrus, other^b	2013	1,479	10.63				
	2012	1,511	10.72				
Fresh	2013			15,700	ton	\$ 577.00	\$ 9,059,000
	2012			16,200	ton	\$ 604.00	\$ 9,785,000



FRESNO COUNTY

FRUIT AND NUT CROPS

CROP	YEAR	HARVESTED ACREAGE	PRODUCTION			VALUE		
			PER ACRE	TOTAL	UNIT	PER UNIT	TOTAL	
Kiwifruit	2013	514	5.00	2,570	ton	\$ 600.00	\$ 1,542,000	
	2012	312	8.59	2,680	ton	\$ 646.00	\$ 1,731,000	
Nectarines ^a	2013	11,363	8.68	98,600	ton	\$ 953.00	\$ 93,966,000	
	2012	11,294	8.90	101,000	ton	\$ 1,024.00	\$ 103,424,000	
Peaches								
Cling ^a	2013	1,293	16.94	21,900	ton	\$ 346.00	\$ 7,577,000	
	2012	1,826	17.74	32,400	ton	\$ 315.00	\$ 10,206,000	
Freestone ^a	2013	13,665	10.03	137,000	ton	\$ 1,015.00	\$ 139,055,000	
	2012	15,756	11.74	185,000	ton	\$ 863.00	\$ 159,655,000	
Peaches Total	2013	14,958					\$ 146,632,000	
	2012	17,582					\$ 169,861,000	
Pears, Asian and European	2013	1,274	18.68	23,800	ton	\$ 1,364.00	\$ 32,463,000	
	2012	1,197	11.53	13,800	ton	\$ 1,356.00	\$ 18,713,000	
Persimmons ^a	2013	973	6.26	6,090	ton	\$ 1,042.00	\$ 6,346,000	
	2012	1066	5.58	5,950	ton	\$ 1,377.00	\$ 8,193,000	
Pistachios ^a	2013	37,874	1.30	49,200	ton	\$ 4,935.00	\$ 242,802,000	
	2012	34,001	1.40	47,600	ton	\$ 4,117.00	\$ 195,969,000	
Plums ^a	2013	11,202	6.73	75,400	ton	\$ 898.00	\$ 67,709,000	
	2012	14,591	9.55	139,000	ton	\$ 988.00	\$ 137,332,000	
Plums, dried ^a	2013	1,553	2.32	3,600	ton	\$ 1,459.00	\$ 5,252,000	
	2012	2,133	3.42	7,300	ton	\$ 1,038.00	\$ 7,577,000	
Pluot ^a	2013	1,114	6.07	6,760	ton	\$ 956.00	\$ 6,463,000	
	2012	1,129	5.79	6,540	ton	\$ 1,013.00	\$ 6,625,000	
Pomegranates ^a	2013	5,332	5.85					
	2012	8,081	5.26					
Fresh	2013			12,200	ton	\$ 707.00	\$ 8,625,000	
	2012			13,800	ton	\$ 1,207.00	\$ 16,657,000	
Juice	2013			19,000	ton	\$ 229.00	\$ 4,351,000	
	2012			28,700	ton	\$ 158.00	\$ 4,535,000	
Pomegranate Total	2013						\$ 12,976,000	
	2012						\$ 21,192,000	

FRESNO COUNTY

FRUIT AND NUT CROPS

CROP	YEAR	HARVESTED ACREAGE	PRODUCTION		VALUE		
			PER ACRE	TOTAL	UNIT	PER UNIT	TOTAL
Walnuts ^a	2013	9,348	1.32	12,300	\$	3,384.00	\$ 41,623,000
	2012	8,026	1.59	12,800	\$	2,685.00	\$ 34,368,000
Other ^d	2013	7,933					\$ 72,326,000
	2012	9,590 [*]					\$ 51,120,000 [*]
Total	2013	501,061					\$ 3,204,954,000
	2012	559,782					\$ 3,109,233,000

^a Acreage, production, and value are included in other fruit and nut crops: 90 acres apricots (processed), 403 acres peaches freestone (processed), 39 acres peaches cling (fresh), 155 acres pomegranate (arials); **ORGANIC**: 88 acres almonds, 3 apples (fresh), 102 blueberry (fresh), 2,286 acres grapes, raisin (dried & crushed), 17 acres grapes, table (crushed), 34 acres mandarins, 160 acres nectarines (fresh), 47 acres navel oranges, 18 acres valencia oranges, 177 acres peaches, cling (fresh & processed), 148 acres peaches, freestone (fresh and processed), 2 acres persimmon, 1,087 acres pistachio, 104 acres plums (fresh), 18 plums (dried), 17 acres pluots, 120 acres pomegranates (fresh and processed)

^b Includes lime, grapefruit, pomelo and tangelo

^c Includes dried, table, and wine varieties

^d Includes almonds (shells and inedible), apricot (dried), blackberries, blueberries, boysenberries, figs (fresh, dried and substandard), grape (leaves and raisin by-product), jujubes, lemons (processed), mandarin (processed), olives (oil & canned), other citrus (processed), peaches (processed freestone & fresh cling), pecans, plumcot, pomegranate (arials) and strawberries (fresh); **ORGANIC**: almonds (meats and hulls), apple (fresh), apricot (fresh), blueberry (fresh), fig (fresh, dried and substandard), grape, raisin (crushed & dried), grape, table (crushed), mandarins, nectarines, orange (navel and valencia), peaches freestone (fresh and processed), peaches cling (fresh and processed), persimmons, pistachio, plums, plums (dried), pluot, pomegranate (fresh and processed)

^{*} Revised



FRESNO COUNTY

NURSERY PRODUCTS

CROP	YEAR	ACRES	QUANTITY	UNIT	VALUE
Herbaceous	2013	48	3,527,000	^b	\$ 5,054,000
Ornamentals^a	2012	78	3,485,000	^b	\$ 5,249,000
Ornamental Trees	2012	271	2,483,000	plants	\$ 15,985,000
and Shrubs	2012	84	238,000	plants	\$ 3,352,000
Other^c	2013	473	316,124,000	units	\$ 21,664,000
	2012	472	703,882,000	units	\$ 32,350,000
Total	2013	792			\$ 42,703,000
	2012	634[*]			\$ 40,951,000

a Includes aquatic plants, potted plants, bedding plants, decorative plants, flats, annuals, perennials and grasses

b Includes flats, dozens, cans, seedlings and single plants

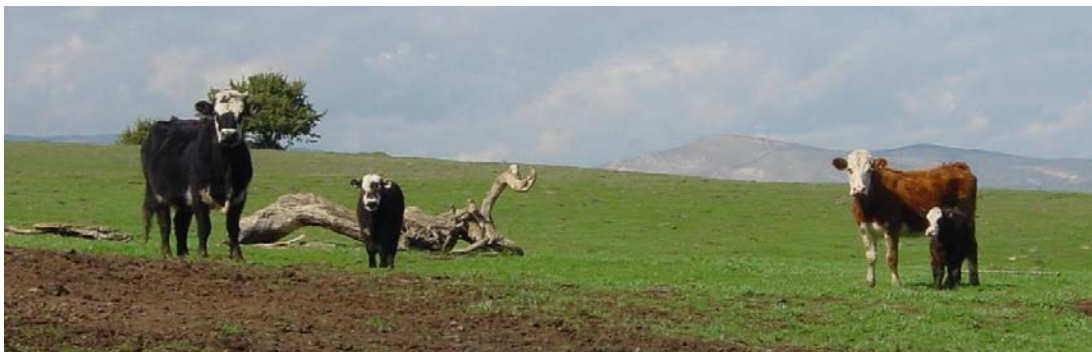
c Includes bareroot fruit trees, Christmas trees, citrus (budwood and trees), grape (rootings and cuttings), vegetable transplants, and turf (in square feet)

* Revised

FRESNO COUNTY

LIVESTOCK AND POULTRY

ITEM	YEAR	PRODUCTION		UNIT	VALUE	
		NO. OF HEAD	TOTAL LIVWEIGHT		PER UNIT	TOTAL
Cattle and Calves						
Beef						
Breeding Stock						
Common	2013	1,160		head	\$ 1,655.00	\$ 1,920,000
	2012	1,190		head	\$ 1,361.00	\$ 1,620,000
Registered	2013	300		head	\$ 3,187.00	\$ 956,000
	2012	300		head	\$ 3,613.00	\$ 1,084,000
Feeders	2013	81,100	343,000	cwt	\$ 128.92	\$ 44,220,000
	2012	85,300	362,000	cwt	\$ 130.48	\$ 47,234,000
Calves	2013	24,900	74,700	cwt	\$ 109.54	\$ 8,183,000
	2012	25,400	76,200	cwt	\$ 158.00	\$ 12,040,000
Slaughter Stock	2013	279,000	1,439,000 ^a	cwt	\$ 126.88	\$ 182,580,000
	2012	285,000	1,426,000 ^a	cwt	\$ 121.34	\$ 173,031,000
Dairy						
Breeding Stock	2013	66,400		head	\$ 1,355.00	\$ 89,972,000
	2012	64,400		head	\$ 1,343.00	\$ 86,489,000
Cull Stock	2013	34,900	454,000	cwt	\$ 76.07	\$ 34,536,000
	2012	36,100	469,000	cwt	\$ 75.07	\$ 35,208,000
Calves	2013	68,600	206,000	cwt	\$ 110.91	\$ 22,847,000
	2012	71,700	215,000	cwt	\$ 109.78	\$ 23,603,000
Cattle and Calves	2013					\$ 385,214,000
Total	2012					\$ 380,309,000



FRESNO COUNTY

LIVESTOCK AND POULTRY

ITEM	YEAR	PRODUCTION		UNIT	VALUE		
		NO. OF HEAD	TOTAL LIVEWEIGHT		PER UNIT	TOTAL	
Hogs and Pigs							
Feeder Pigs and Slaughter Stock	2013	61,800	137,000	cwt	\$	79.44	\$ 10,883,000
	2012	59,500	132,000	cwt	\$	93.34	\$ 12,321,000
Sheep and Lambs							
Slaughter Stock							
Lambs	2013	74,300	95,400	cwt	\$	112.50	\$ 10,733,000
	2012	74,600	95,900	cwt	\$	170.88	\$ 16,387,000
Sheep	2013	10,300	16,500	cwt	\$	41.50	\$ 685,000
	2012	10,380	16,500	cwt	\$	38.24	\$ 631,000
Poultry and Misc. Other^b	2013						\$ 549,252,000
	2012						\$ 729,976,000 *
Total	2013						\$ 956,767,000
	2012						\$ 1,139,624,000

a Net gain

b Includes buffalo; chickens (chicks, fryers (conventional and organic) and old breeder birds); ducks (ducklings, old hens and drakes); fish (bass, carp and channel cat); game birds (chukar, pheasants and quail); goats (cull milk, kid and meat); insects (beneficial); squab; turkeys (conventional and organic meat birds, old breeder birds and poults); and vermiculture

* Revised



FRESNO COUNTY

LIVESTOCK AND POULTRY PRODUCTS

CROP	YEAR	PRODUCTION	UNIT	VALUE		
				PER UNIT	TOTAL	
Manure ^a	2013	596,000	ton	\$ 5.61	\$	3,344,000
	2012	761,000	ton	\$ 6.71	\$	5,106,000
Milk						
Manufacturing	2013	16,400	cwt	\$ 19.15	\$	314,000
	2012	37,400	cwt	\$ 17.90	\$	669,000
Market ^b	2013	27,261,000	cwt	\$ 18.78	\$	511,962,000
	2012	26,702,000	cwt	\$ 16.83	\$	449,395,000
Milk Total	2013				\$	512,276,000
	2012				\$	450,064,000
Wool	2013	361,000	lb	\$ 1.80	\$	650,000
	2012	361,000	lb	\$ 1.65	\$	596,000
Eggs						
Hatching ^c	2013	1,204,000	dozen	\$ 8.55	\$	10,294,000
	2012	952,000	dozen	\$ 10.72	\$	10,205,000
Total	2013				\$	526,564,000
	2012				\$	465,971,000

a Includes cow and poultry manure

b Includes cow milk (conventional and organic) and goat milk

c Includes chicken, duck, and turkey commercial and hatching eggs



FRESNO COUNTY

APIARY PRODUCTS AND POLLINATION SERVICES

ITEM	YEAR	PRODUCTION TOTAL	UNIT	VALUE	
				PER UNIT	TOTAL
Apiary Products ^a					
Honey	2013	2,144,000	lb	\$ 2.30	\$ 4,931,000
	2012	2,171,000	lb	\$ 1.87	\$ 4,060,000
Beeswax	2013	277,000	lb	\$ 3.38	\$ 936,000
	2012	159,000	lb	\$ 3.10	\$ 493,000
Pollination ^b					
Seed ^c	2013				\$ 1,081,000
	2012				\$ 944,000
Trees, Fruit and Nut ^d	2013				\$ 53,608,000
	2012				\$ 51,828,000
Melon ^e	2013				\$ 1,086,000
	2012				\$ 887,000
Vegetable ^f	2013				\$ 100,000
	2012				\$ 82,500
Total	2013				\$ 61,742,000
	2012				\$ 58,294,500



a Reflects bee colonies registered in Fresno County by commercial and semi-commercial beekeepers: 2013 – 65,757 colonies; 2012 – 54,871 colonies
b Reflects value of pollination by all bee colonies located in Fresno County for pollination services during 2013
c Alfalfa, onion and misc. vegetable
d Almonds, apples, blueberries, cherries, kiwi, pear, plums, pluot, pomegranate and prunes
e Cantaloupe, honeydew, watermelons and mixed melons
f Bell pepper, cucumbers, pumpkin, and squash

FRESNO COUNTY

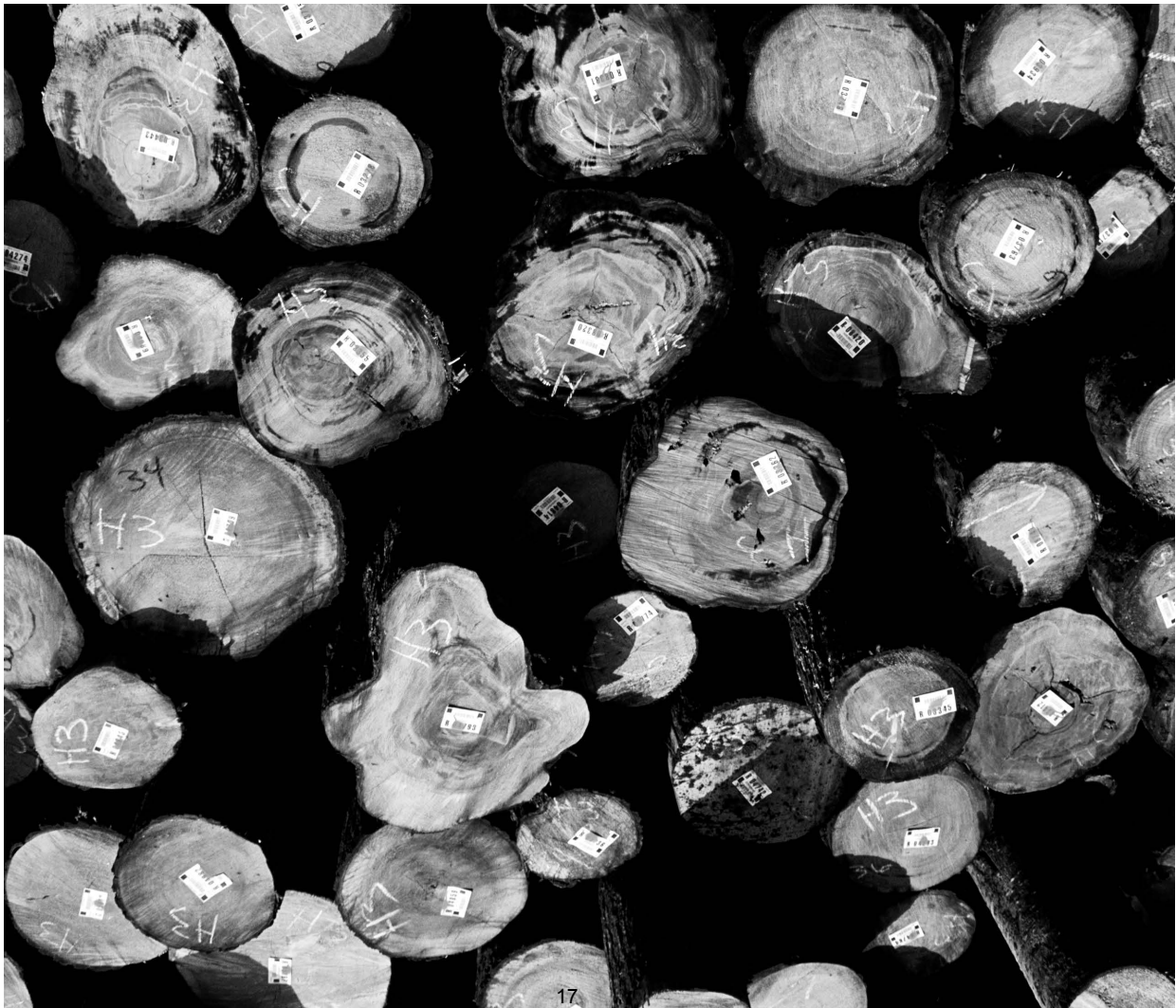
INDUSTRIAL CROPS

CROP	YEAR	PRODUCTION	UNIT	VALUE
Timber ^a	2013	49,193,000	board feet	\$ 2,331,000
	2012	36,653,000 *	board feet	\$ 1,518,000
Firewood	2013	1,957	cord	\$ 19,500
	2012	1,871	cord	\$ 18,500
Other ^b	2013			\$ 1,195,000
	2012			\$ 2,845,000
Total	2013			\$ 3,545,500
	2012			\$ 4,381,500

^a Includes government and non-government properties

^b Includes Poles, Posts & split products, limbs, cones, biomass, bark, wood fines, pomace, mulch, ground cover and compost

* Revised



**GROWTH IN FRESNO COUNTY AGRICULTURE AS INDICATED BY GROSS
PRODUCTION VALUE OF AGRICULTURAL PRODUCTS OVER A TWENTY-TWO YEAR PERIOD**

1992 - 2,635,447,400*	2003 - 4,073,338,500*
1993 - 3,022,311,100*	2004 - 4,603,936,200*
1994 - 3,084,870,800	2005 - 4,641,194,200
1995 - 3,142,878,300*	2006 - 4,845,737,100
1996 - 3,324,885,800	2007 - 5,347,398,000
1997 - 3,436,433,500*	2008 - 5,627,909,000*
1998 - 3,257,712,600*	2009 - 5,347,381,000*
1999 - 3,570,027,600*	2010 - 5,944,758,000
2000 - 3,281,285,400*	2011 - 6,811,533,700*
2001 - 3,220,101,800	2012 - 6,587,266,000
2002 - 3,440,927,000*	2013 - 6,436,628,500

YEAR COMPARISON OF GROSS PRODUCTION VALUE IN FRESNO COUNTY


CROPS	1993	2003	2010	2011	2012	2013
Field	\$ 607,058,000	\$ 499,694,000	\$ 376,760,000	\$ 675,810,000	\$ 573,606,000	\$ 413,859,000
Seed	34,577,000	37,423,000	50,957,000	32,977,000	45,500,000	39,706,000
Vegetable	609,714,000	1,226,164,000*	1,528,285,000	1,526,541,000*	1,149,705,000	1,186,788,000
Fruit & Nut	1,010,509,400	1,491,636,000*	2,702,906,000	2,993,017,000	3,109,233,000	3,204,954,000
Nursery	21,294,000*	32,724,700	37,478,000	35,750,000	40,951,000	42,703,000
Livestock (Etal)	724,953,000	768,675,000	1,210,031,000	1,487,617,000	1,605,595,000	1,483,331,000
Apiary	6,052,000	11,063,800	35,702,000	55,649,000	58,294,500	61,742,000
Industrial	8,153,700	5,958,000	2,639,000	4,172,700	4,381,500	3,545,500
TOTAL	\$ 3,022,311,100*	\$ 4,073,338,500*	\$ 5,944,758,000	\$ 6,811,533,700*	\$ 6,587,266,000	\$ 6,436,628,500

*Revised

FRESNO COUNTY

SUSTAINABLE AGRICULTURE

2013 BIOLOGICAL CONTROL ACTIVITIES

PEST	B.C. AGENT/MECHANISM	ACTIVITY
Glassy-Winged Sharpshooter 	<ul style="list-style-type: none"> • <i>Gonatocerus triguttatus</i> • <i>Gonatocerus morrilli</i> • <i>Gonatocerus morgani</i> 	CDFA released parasitoids species and monitored for evidence GWSS egg parasitism

2013 DETECTION ACTIVITIES

INSECT	TRAPS DEPLOYED	RESULTS
European Grape Vine Moth	7,307	None captured
Glassy-Winged Sharpshooter	3,941	Multiple residential/commercial captures (properties treated)
Asian Citrus Psyllid	3,215	1 captured
Light Brown Apple Moth	704	None captured
Mediterranean Fruit Fly	698	None captured
Gypsy Moth	447	None captured
Oriental Fruit Fly	680	None captured
Melon Fruit Fly	362	None captured
Japanese Beetle	331	None captured
Khapra Beetle	0	None captured
Apple Maggot	55	None captured
Cherry Fruit Fly	27	None captured

FRESNO COUNTY

SUSTAINABLE AGRICULTURE (continued)

PEST	ACTIVITY	RESULT
Sudden Oak Death	8 – Nursery Inspections	None found
Glassy-Winged Sharpshooter	755 – Nursery Inspections 9,122 – Bulk citrus Inspections	2 – Adults in Nursery 1 – Adult in Bulk Citrus

2013 PEST ERADICATION/MANAGEMENT ACTIVITIES

ERADICATION

Spotted Knapweed - No Survey
 Rush Skeltonweed - 5,127 acres surveyed
 996 acres infested
 3.16 acres treated

Pink Bollworm - 62,215 cotton acres
 Reduced tillage – 5 growers/1,119 acres
 Plowdown non-compliance – None



MANAGEMENT

Perennial Pepperweed - 5,565 acres surveyed/2,335 acres infested
 48.2 acres treated

Hoary Cress - 55.5 acres surveyed
 10.5 acres infested
 .5 acres treated

Purple Starthistle - 300 acres surveyed/300 acres infested
 .1 acres treated

Water Hyacinth - 1,510 acres surveyed monthly July and October
 Multiple small detections
 Hand harvested/disposed

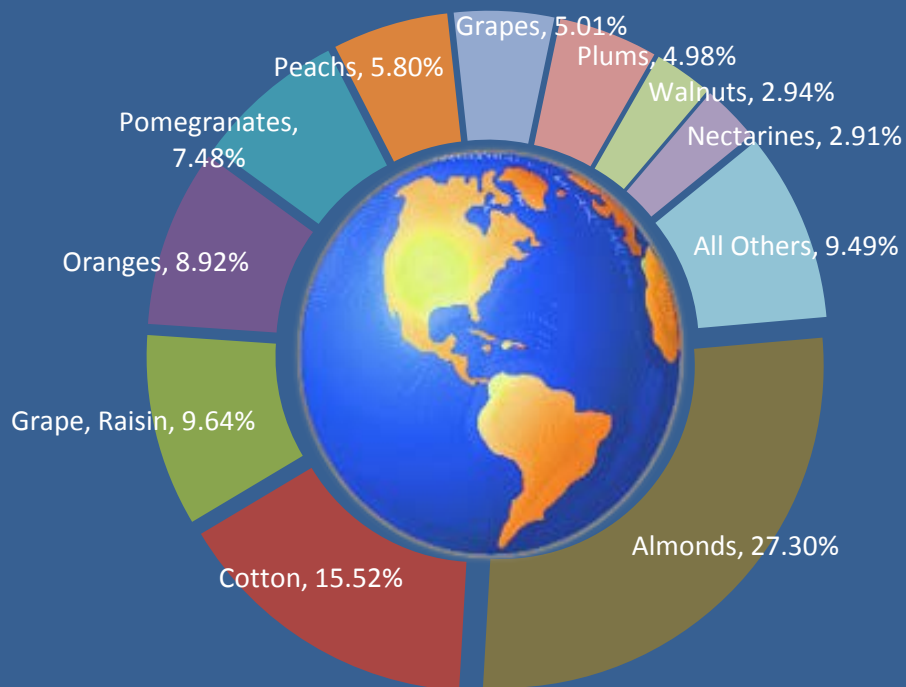
Glassy-Winged Sharpshooter - 5,100 Properties treated



2013 PHYTOSANITARY EXPORTS

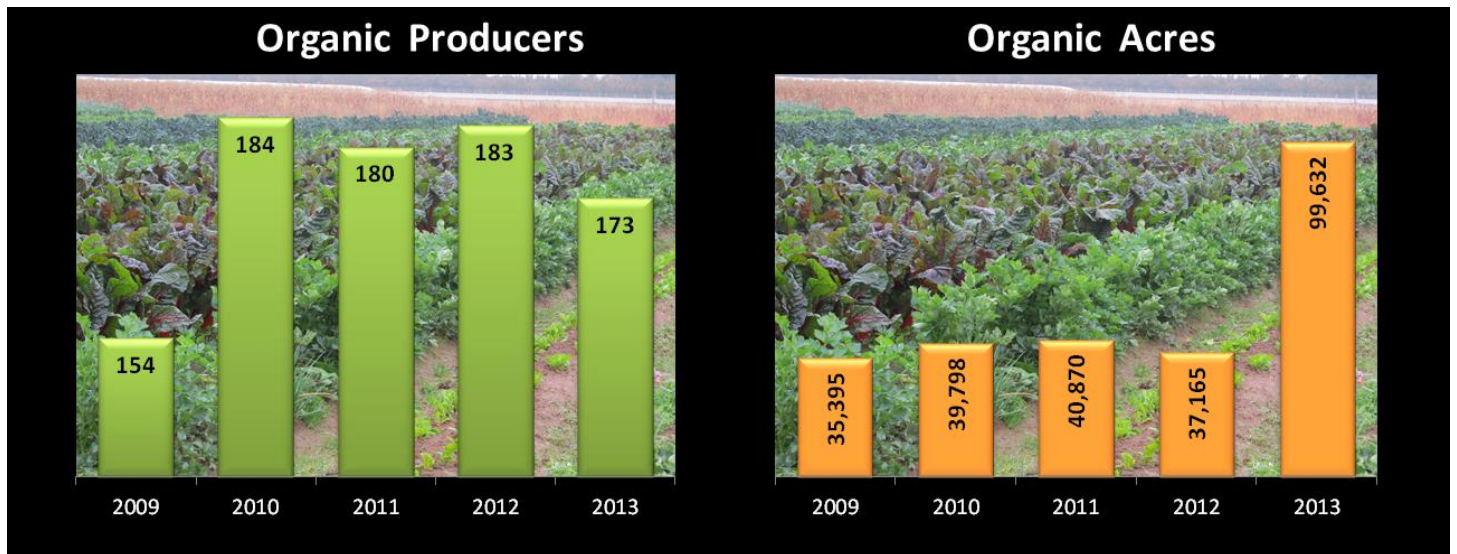
In 2013, a total of 25,808 phytosanitary certificates were issued for 256 different commodities to export markets in 99 countries around the world. In addition, 8,247 acres of export seed fields were inspected and certified during the 2013 season.

2013 Exports by Volume

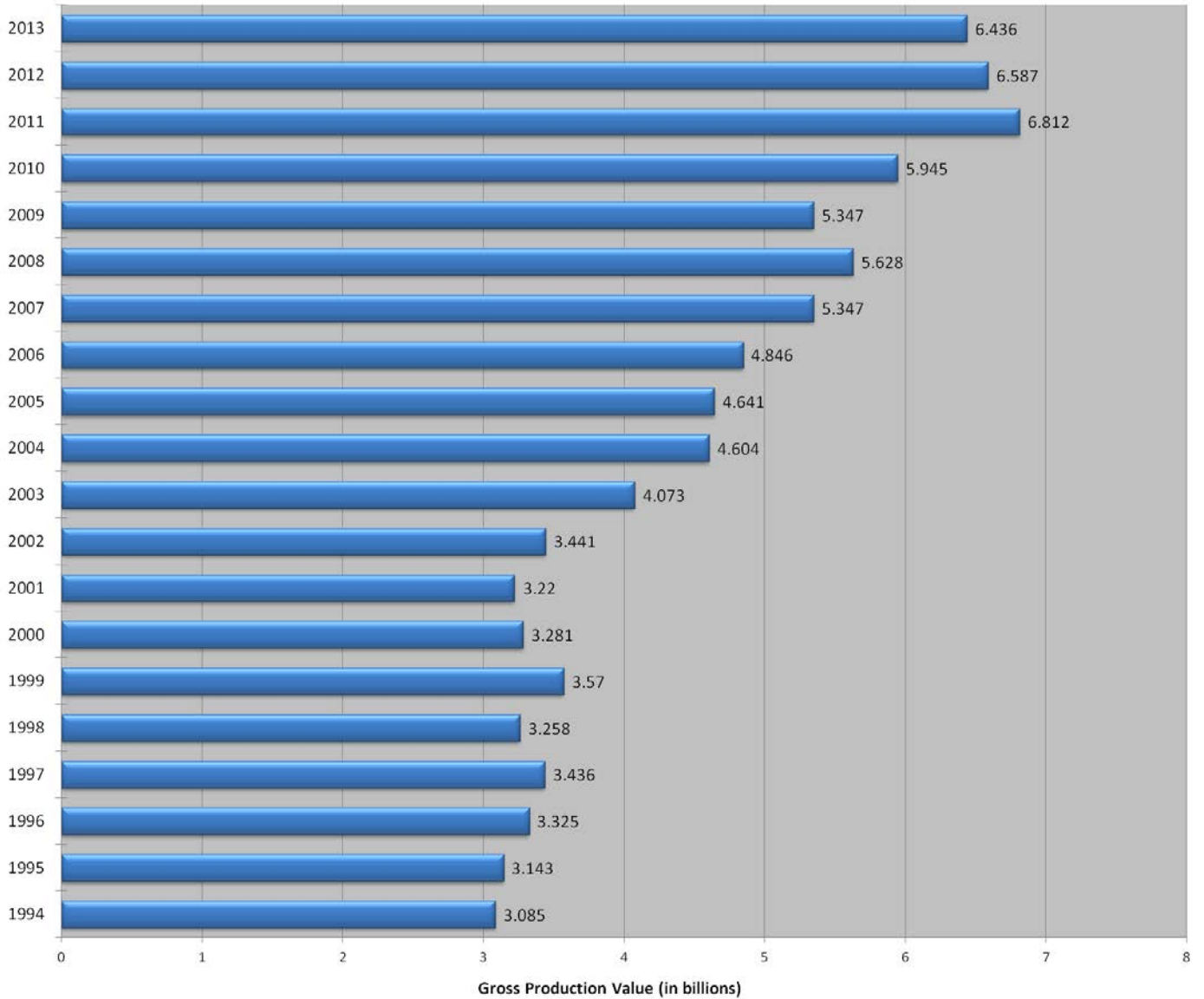


2013 ORGANIC FARMING

There were 175 commodities registered as organic in Fresno County in 2013. Organic registrations included 24 handlers (shippers/packers), 8 processors, and 173 producers. These farms represented 99,632 acres and over 3,975,000 head of livestock including turkeys, chickens, cows, pigs, sheep and goats. Organic eggs and milk were also produced. There were 16 new organic registrants in 2013 comprised of two handlers, one handler/processor and thirteen producers. Over the past five years the number of registered producers has increased by just over 12% and organically farmed acres has increased by over 180% due in large part to an increase in rangeland.



**GROWTH OF FRESNO COUNTY AGRICULTURE
OVER A TWENTY YEAR SPAN
1994 through 2013**



**RELATIONSHIP IN TERMS OF TOTAL VALUE
FOR 2013 CROP YEAR
\$6,436,628,500**

