

# Color Photo Guide to DRY BEAN PESTS

A Supplement to the UC IPM Pest Management Guidelines

## INSECTS and MITES



Seedcorn maggot, *Delia platura*; larva and damage to seeds



Variegated cutworm, *Peridroma saucia*; larva



Sugarbeet wireworm, *Limonius californicus*



Spider mites, *Tetranychus* spp.; adults and eggs



Spider mite damage to leaves



Cowpea aphid, *Aphis craccivora*; nymph (right) and adult (left)



Cowpea aphid colony on blackeyes; note leaf curl symptoms.



Potato leafhopper, *Empoasca fabae*



Corn earworms, *Helicoverpa zea*; variation in color of the larvae



Beet armyworm, *Spodoptera exigua*; larva



Western yellowstriped armyworm, *Spodoptera praefica*; larva



Western flower thrips, *Frankliniella occidentalis*; adult





Thrips damage to seedling



Leafminer, *Liriomyza* spp.; mines and larva



Silverleaf whitefly, *Bemisia argentifolii*; nymphs and adult



Cabbage looper, *Trichoplusia ni*



Saltmarsh caterpillar, *Estigmene acrea*



Lygus bug, *Lygus hesperus*; adult



Lygus bug damage to buds and flowers



Lygus bug damage to developing seeds



Lygus bug "sting" damage to mature seeds



Redshouldered stink bug, *Thyanta pallidovirens*; adult



Cowpea weevil, *Callosobruchus maculatus*; adult and damage to blackeye beans in storage

### Beneficials



Minute pirate bug, *Orius tristicolor*



Western predatory mite, *Galendromus (Metaseiulus) occidentalis*



## DISEASES



Rhizoctonia, *Rhizoctonia solani*; seedling damage



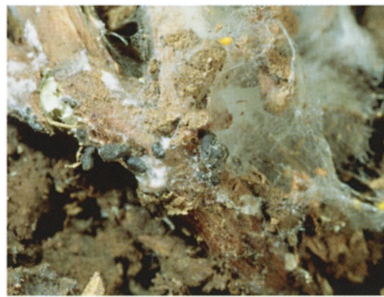
Rhizoctonia; lesion on belowground portion of stem



Damping off, *Pythium* spp.; early lesion on seedling



White mold, *Sclerotinia sclerotiorum*; symptoms on garbanzo



White mold; mycelium and sclerotia



White mold; pod symptoms on common bean



Fusarium root rot, *Fusarium solani*; note initiation of new roots above red lesion on underground portion of stem



Fusarium wilt, *Fusarium oxysporum*; vascular discoloration on stem on bottom



Fusarium wilt; leaf yellowing on blackeyes



Charcoal rot, *Macrophomina phaseolina*; stem symptoms



Curly top, beet curly top geminivirus; leaf crinkling on stunted plant



Southern blight, *Sclerotium rolfsii*; mycelium and sclerotia on underground portion of stem





Photo by R. Gilbertson

**Common bacterial blight, *Xanthomonas campestris* pv. *phaseoli*; leaf symptoms**

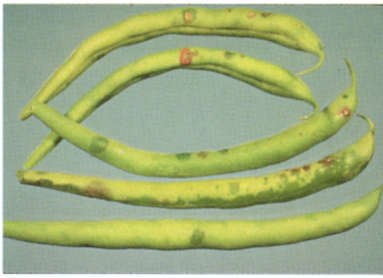


Photo by D. Hagedorn

**Common bacterial blight; symptoms on pods**



Photo by R. Gilbertson

**Halo blight, *Pseudomonas syringae* pv. *phaseolicoli*; leaf symptoms**

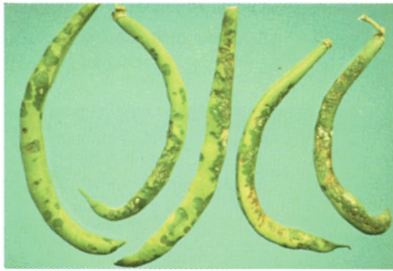


Photo by D. Hagedorn

**Halo blight; symptoms on pods**



Photo by D. Hagedorn

**Anthracnose, *Colletotrichum lindemuthianum*; symptoms on pods**



**Ascochyta blight, *Ascochyta rabiei*; leaf symptoms on garbanzo**



**Ascochyta blight; symptoms on pod**



Photo by D. Hagedorn

**Bean yellow mosaic; leaf symptoms**



**Bean common mosaic; leaf symptoms**

## Nematodes



**Root knot nematode, *Meloidogyne incognita*; root galling**



**Root knot nematode gall (top) in comparison to root nodule from nitrogen-fixing bacteria**

UNIVERSITY OF CALIFORNIA DIVISION OF AGRICULTURE AND NATURAL RESOURCES PUBLICATION 3339PS2

For information about ordering this publication contact your county UC Cooperative Extension office or:

Communication Services—Publications  
Division of Agriculture and Natural Resources  
University of California  
6701 San Pablo Avenue, 2nd Floor  
Oakland, CA 94608-1239

Telephone: (510) 642-2431; within California (800) 994-8849  
FAX: (510) 643-54709  
e-mail inquires to [anrpubs@ucdavis.edu](mailto:anrpubs@ucdavis.edu)

UC IPM Pest Management Guidelines are available from UC Cooperative Extension county offices or from Communication Services, DANR. Produced by IPM Education and Publications, University of California, Davis, CA 95616-8620. This publication was a project of the UC DANR Dry Bean Workgroup. All photos taken by Jack Kelly Clark unless otherwise noted.

The University of California, in accordance with applicable Federal and State law and University policy, does not discriminate on the basis of race, color, national origin, religion, sex, disability, age, medical condition (cancer-related), ancestry, marital status, citizenship, sexual orientation, or status as a Vietnam-era veteran or special disabled veteran. The University also prohibits sexual harassment. Inquiries regarding the University's nondiscrimination policies may be directed to the Affirmative Action Director, University of California, Agriculture and Natural Resources, 300 Lakeside Drive, 6th Floor, Oakland, CA 94612-3560; (510) 987-0096