



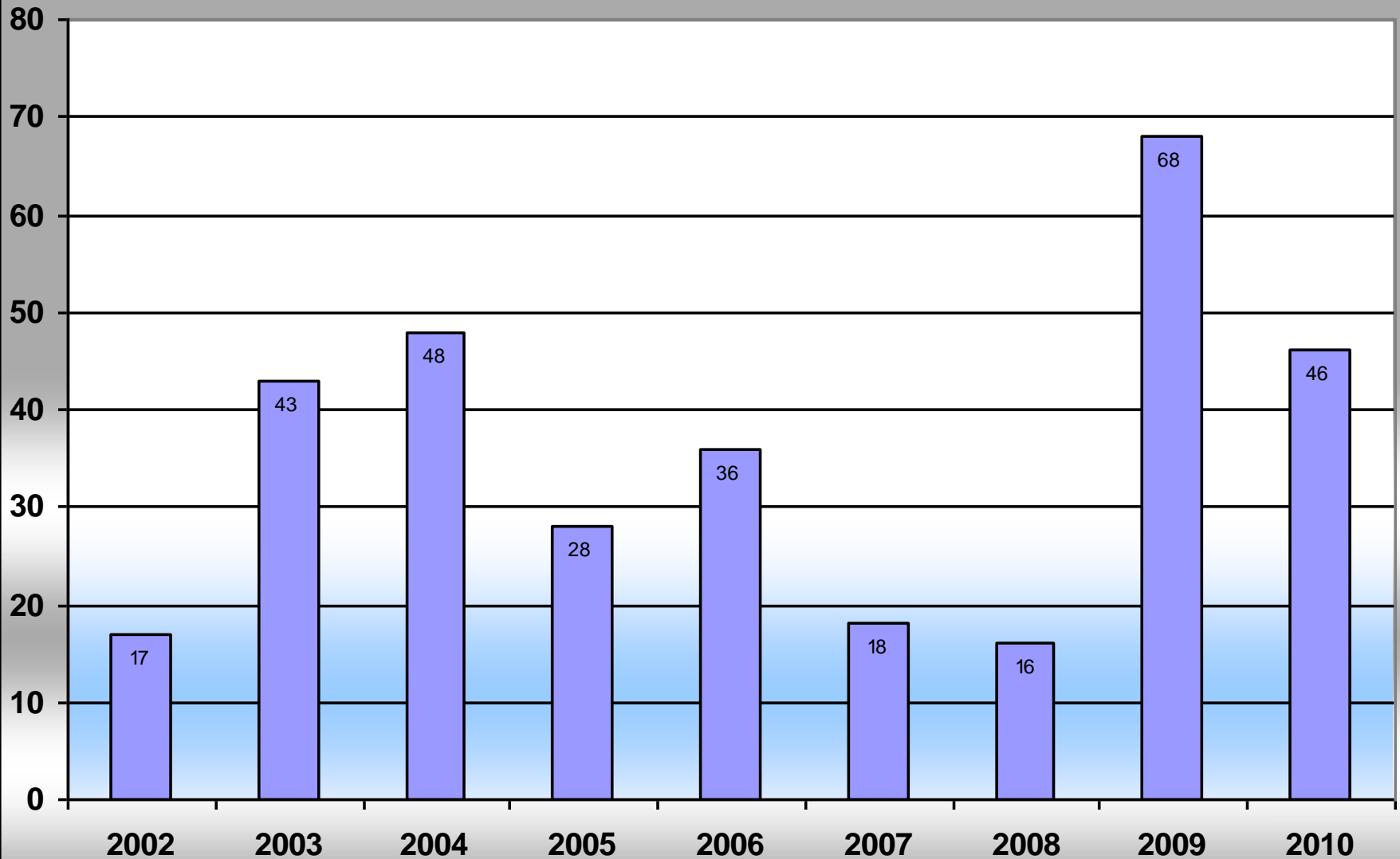
Mobile Irrigation Lab

Field Data 2002-2010

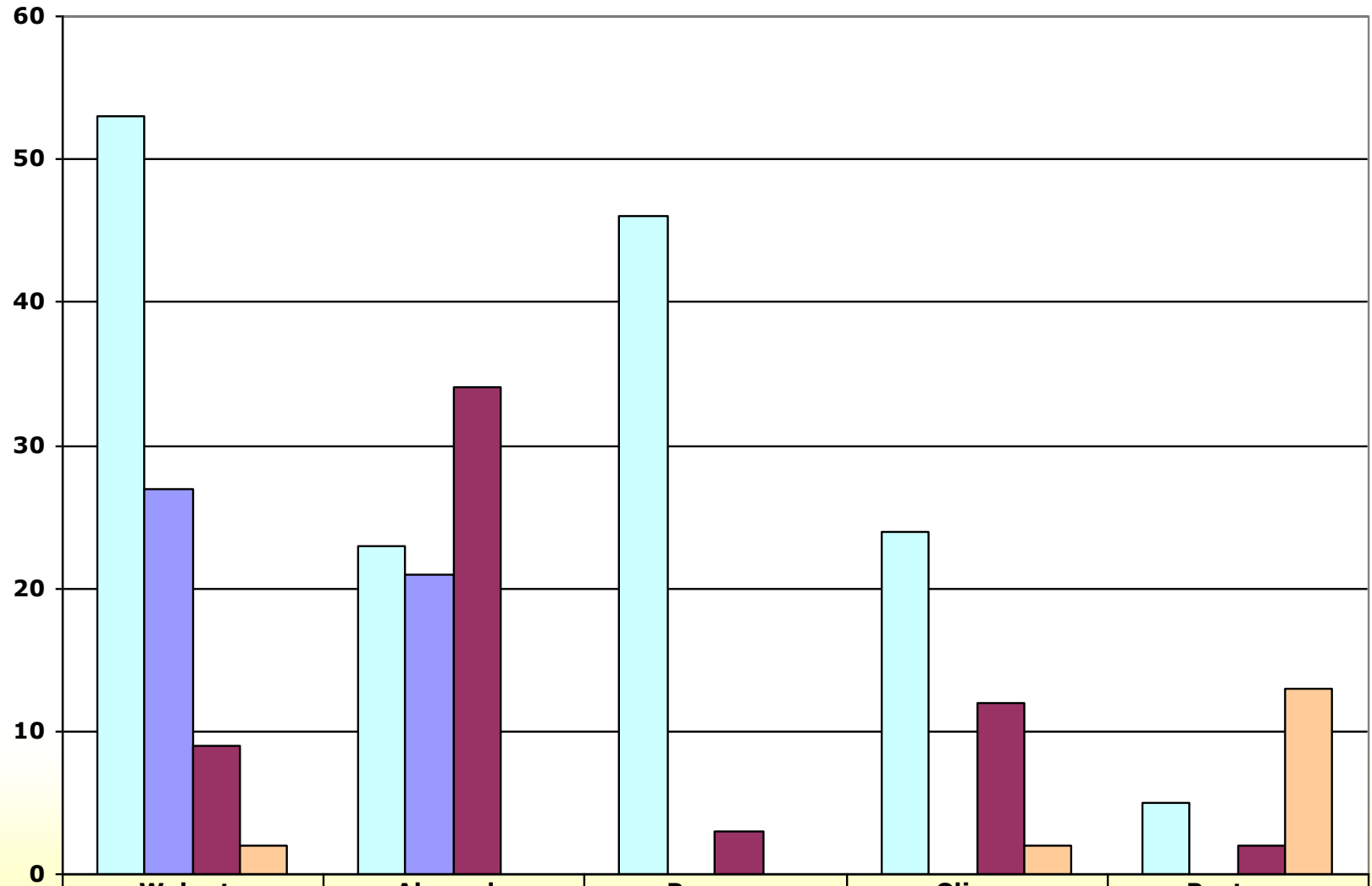
Kevin Greer

Number of Evaluations Per Year

2002 - 2010

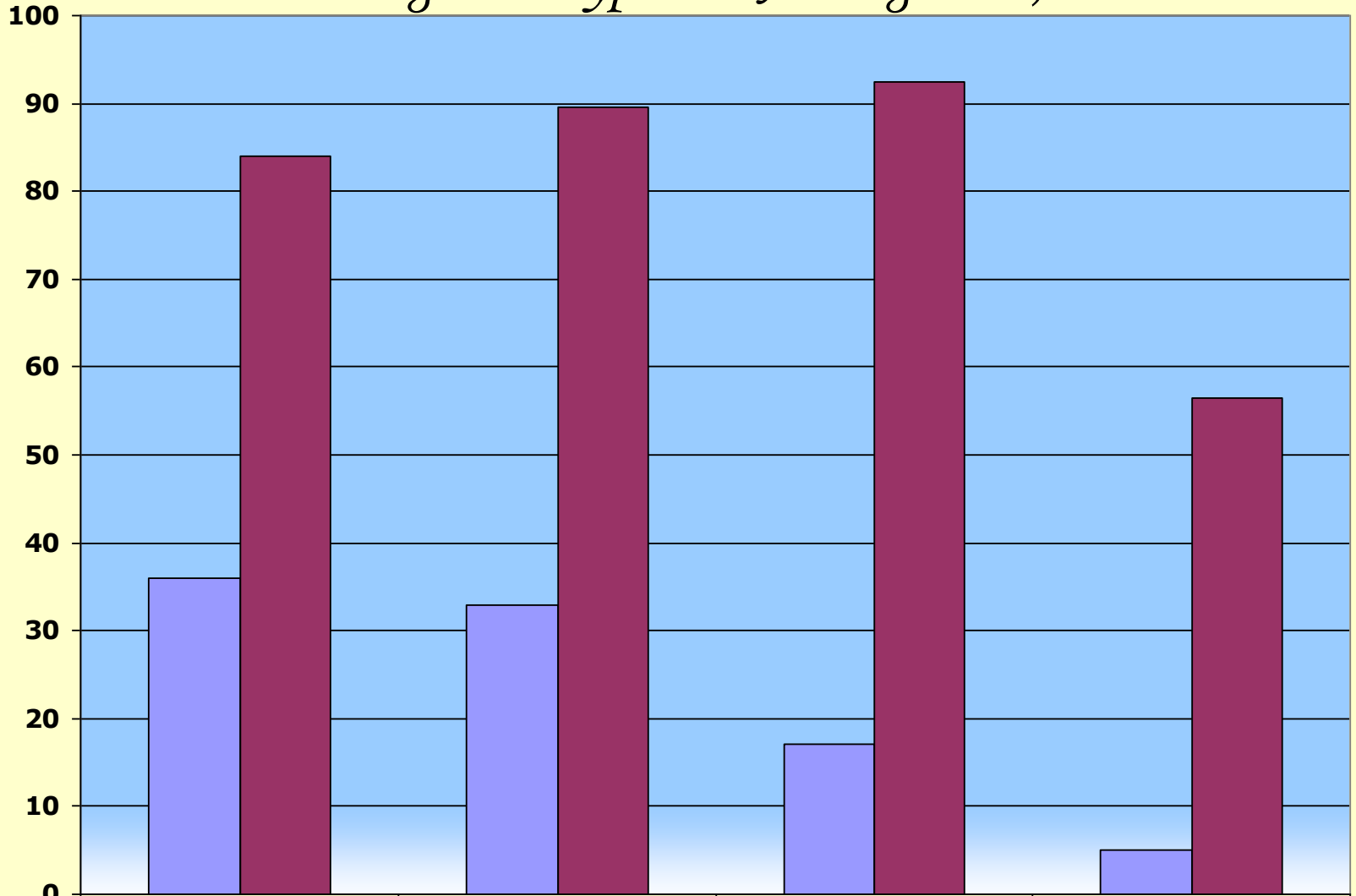


Evaluations by Crop and County 2002-2010



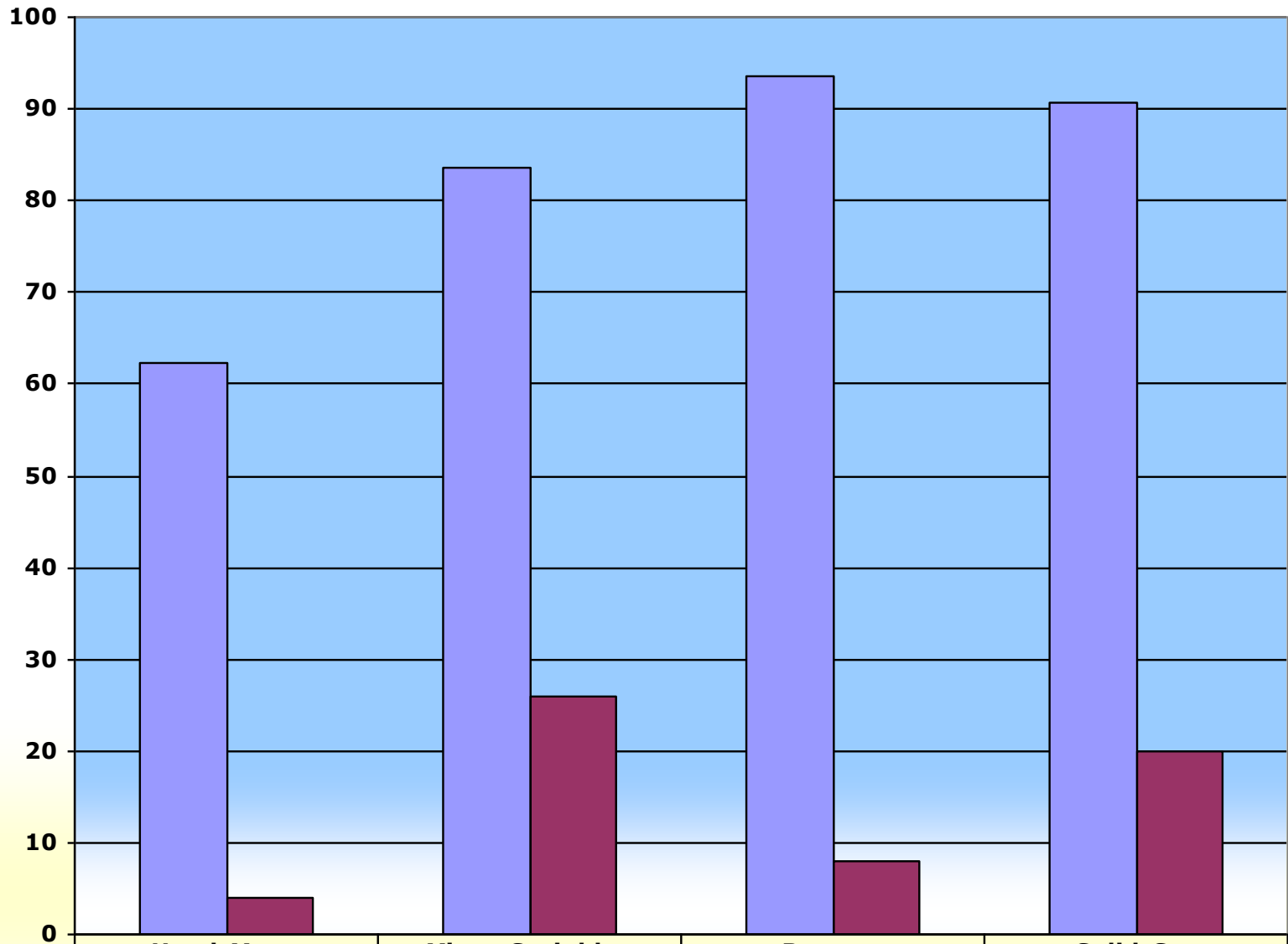
	Walnuts	Almonds	Prunes	Olives	Pasture
□ Tehama	53	23	46	24	5
■ Butte	27	21			
■ Glenn	9	34	3	12	2
■ Shasta	2			2	13

Walnuts: Irrigation Type and Average DU, 2002-2010



	Micro-Sprinkler	Solid-Set	Rotator	Hand-Move
■ Number of Evaluations	36	33	17	5
■ DU	84	89.5	92.5	56.4

Walnuts in Tehama County 2002 - 2010



DU	62.3	83.5	93.5	90.6
Number of Evals	4	26	8	20

The Mobile lab can help!

- Evaluations are FREE!
- We provide valuable information
 - System application rates
 - Distribution Uniformity
 - Suggested run times
 - Soil maps
 - Full report with summary
- All information is confidential!