



Stewardship Contracting

Pacific Southwest Region

Stewardship Contracting/Agreements

Not our **ONLY** tool-
but a very **GOOD** one!

Key Benefits:

- Accomplish more work-by allowing us to trade goods for services, thereby extending budgets.
- Spurring collaboration with members of the community and environmental groups

What have we accomplished?

- FY' 99 - FY' 08
 - Awarded 51 contracts for 34 plus thousand acres
 - Total of 128 MMBF of products with an estimated value of \$10,500,000
- FY'07 - FY' 08
 - Total of approximately 16,000 thousand acres
 - Total of 62 MMBF or 17% of total award, estimated value: \$6,100,000
 - Awarded 17 contracts (FY07)
 - 3 Agreements (RMEF, Watershed Research and Training Center)
 - Weaverville Community Forest (Forest Service, BLM, Trinity Resource Conservation District)

Regional Overview

Forest	Proposals	Contracts	Forest	Proposals	Contracts
Angeles	0	0	Six Rivers	2	2
Cleveland	0	0	Plumas	8	6
Eldorado	25	25	San Bernardino	0	0
Inyo	1	1	Sequoia	0	0
Klamath	3	1	Shasta-Trinity	3	3
Lassen	2	0	Sierra	3	1
Los Padres	1	0	Stanislaus	4	5
Mendocino	3	3	Tahoe	7	3
Modoc	3	1	LTBMU	0	0
Sum				64	51

Stewardship Tools

- Integrated Resource Contracts - Products
 - Timber value equals or exceeds costs of service work
 - Patterned after 2400-6(T) Timber Sale Contracts
- Integrated Resource Service Contracts
 - Service contracts that includes product removal
 - Service cost exceeds timber value
- Stewardship Agreements

What are we using stewardship contracting for?

- Removing vegetation for forest health or fuel reduction
- Road obliteration to restore or maintain water quality
- Watershed restoration and maintenance
- Restoration of wildlife and fish habitat
- Control noxious weeds

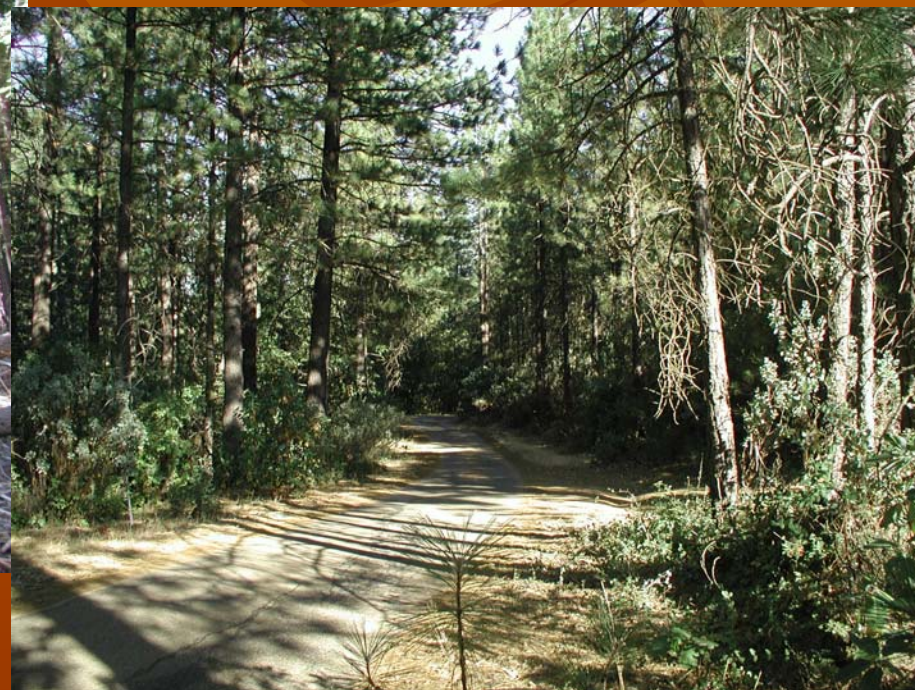
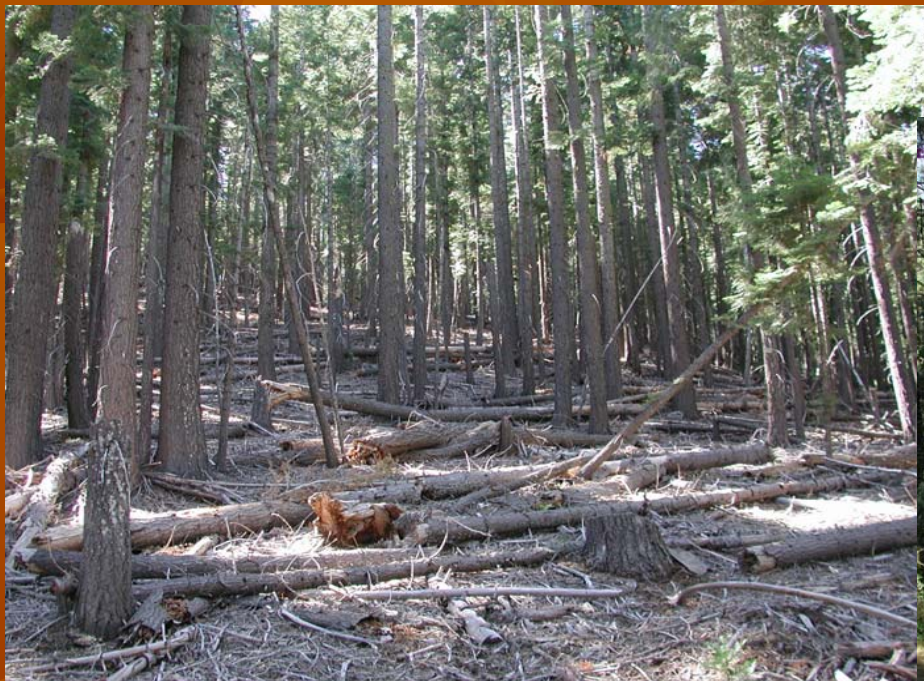


Fuel Reduction Wildland Urban Interface

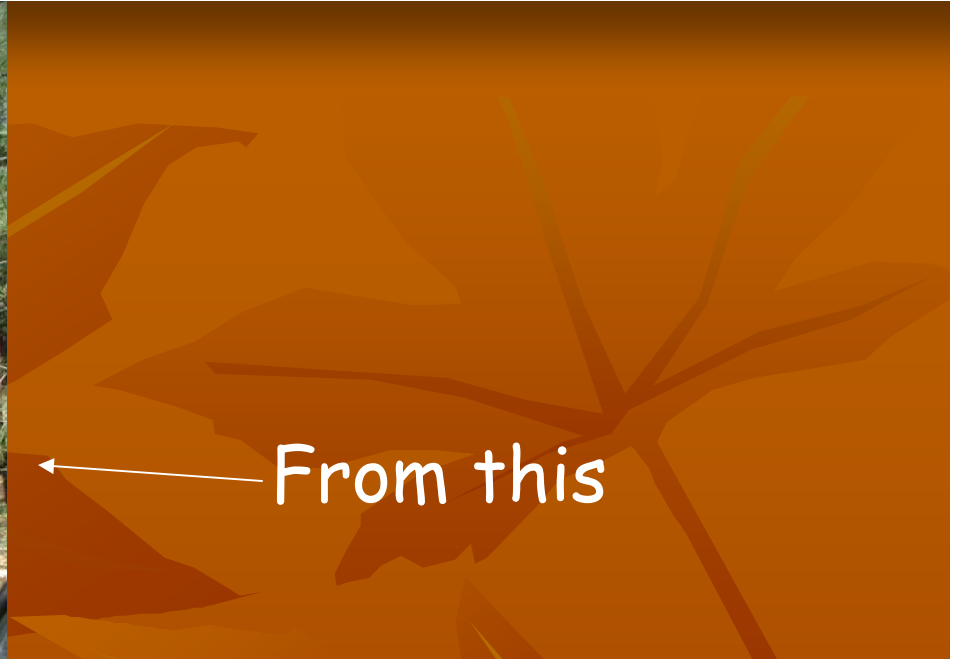


Why Stewardship contracts??

Fuel?? What fuel??



*We have a fuel problem; We have a density problem
Commercial thinning provides the value needed to treat ladder and surface fuels and improve forest health*





← From this

To this →



Stewardship Agreements

Shasta-Trinity National
Forest, McCloud Flats

10-Year Agreement

Stewardship Area: 33,700
acres

Wildlife Improvement
projects, emphasizing elk



**Rocky Mountain
ELK FOUNDATION**
800-CALL ELK • www.elkfoundation.org

Most common Product -sawlogs



Forest Products - Forage

Brazil Ranch

Monterey Ranger District
Los Padres National Forest

Attachment C - Area Map



Bixby Bridge with
Brazil Ranch in background. Buildings are
not visible for State Highway One

Forest Products - Christmas Trees



- Tahoe National Forest
- Nickel Stewardship Project-44 Acres
- Fuels Reduction-WUI
- Product-Christmas Trees

Stewardship Contracting Benefits

- Preparing and Administering One Contract instead of multiple contracts
- Completing the project in less time
- Performing more service work
- Reducing unit costs for service work
- Reducing potential adverse environmental impacts.



- Can meet fuels objectives cheaper and sooner than conventional sales using one contract
 - Can get more acres done - not relying on appropriated \$ for contracts except for salaries; 100% of timber value available on the ground - no overhead tap

Challenges

- Resistance to its use (e.g., contractors unfamiliar with it)
- Paucity of markets for small diameter material/Market Conditions
- Financial challenges of long-term contracts

Stewardship Contracting References

- <http://www.fs.fed.us/forestmanagement/projects/stewardship/index.shtml>
- http://www.blm.gov/nhp/spotlight/forest_initiative/stewardship_contracting/
- <http://www.partnershipresourcecenter.org/resources/imp-tools/stewardship/index.php>
- <http://rlch.org/>
- <http://forestfire.nau.edu/stewardship.htm>
- <http://www.pinchot.org/>
- <http://www.forestsandrangelands.gov/stewardship/index.shtml>