

# Stewardship Contracting Examples

**Marcus Kauffman, Resource Innovations**

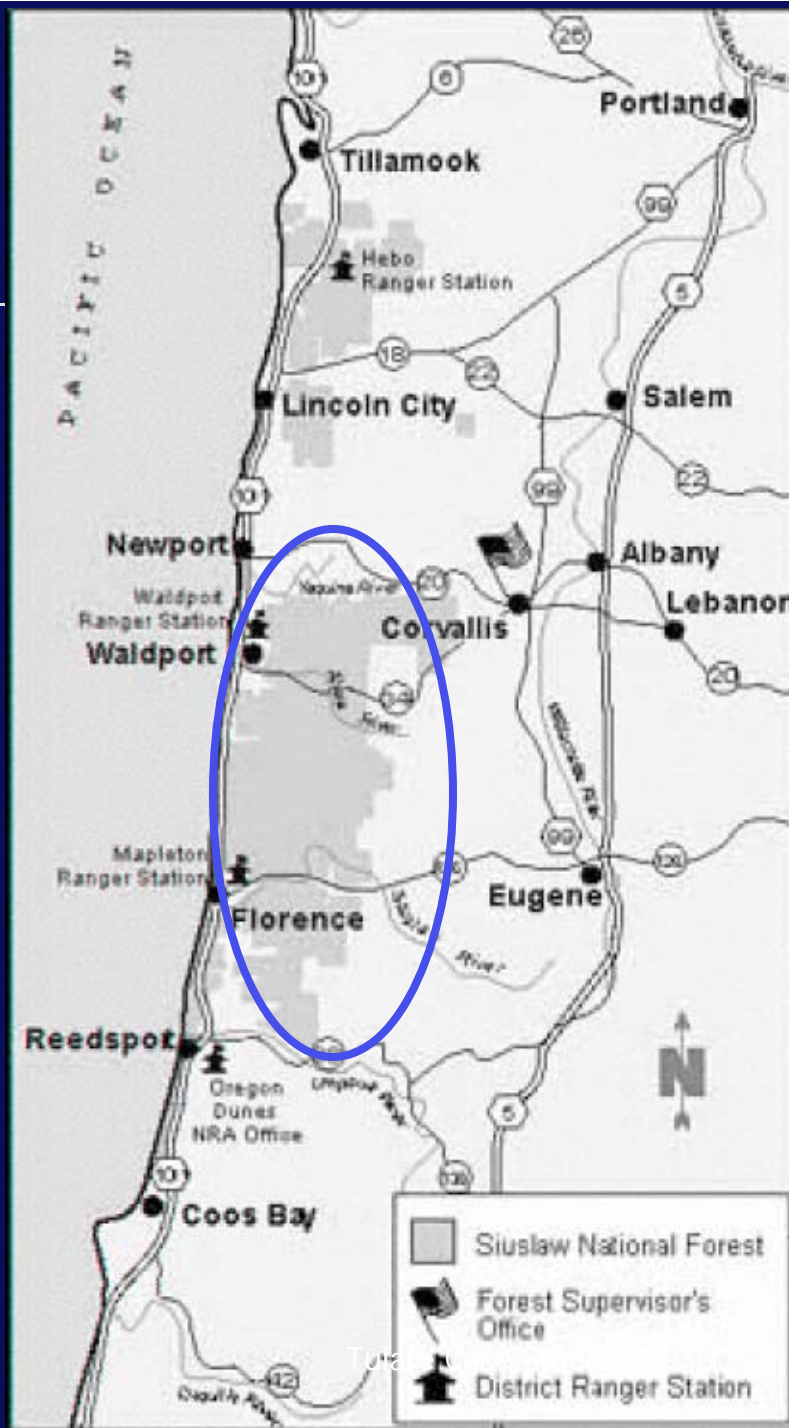
**May 5, 2009**

**Tulare, CA**

# Cases

- Siuslaw
  - Siuslaw National Forest
- Josephine County
  - Rogue River-Siskiyou National Forest
- Lakeview
  - Fremont-Winema National Forest

May 5, 2009



# Stewardship on the Siuslaw

- Siuslaw Stewardship Group
- Alsea Stewardship Group
- Marys Peak Stewardship Group
- Hebo Stewardship Group
- Coast Range Stewardship Roundtable



# Participation

- Watershed councils
- Conservation districts
- Private landowners
- RMEF
- Municipalities
- Tribes
- Oregon Wild



# Siuslaw Stewardship Strategy

- Comprehensive community-driven restoration
- Thinnings in priority LSR stands
  - Promote LSR habitat
  - Complete required associated projects
    - Roads, culverts, weeds, tree planting
- Reinvest receipts in high priority areas
  - Forest Service
  - Private land

# Siuslaw Basin Stewardship Area

- J Forest Service Projects
- I Wyden Projects
- Major Highways
- Stewardship Boundary
- Misery Thin Pilot (2004)
- Eichler Thin and Decks Pilot (2003)
- Green Thin Pilot ATV (2002)
- Divide Thin Pilot (2003)
- Chopper Thin STWD (2005)
- Walker Thin STWD (2005)
- Siuslaw National Forest
- BLM
- Streams

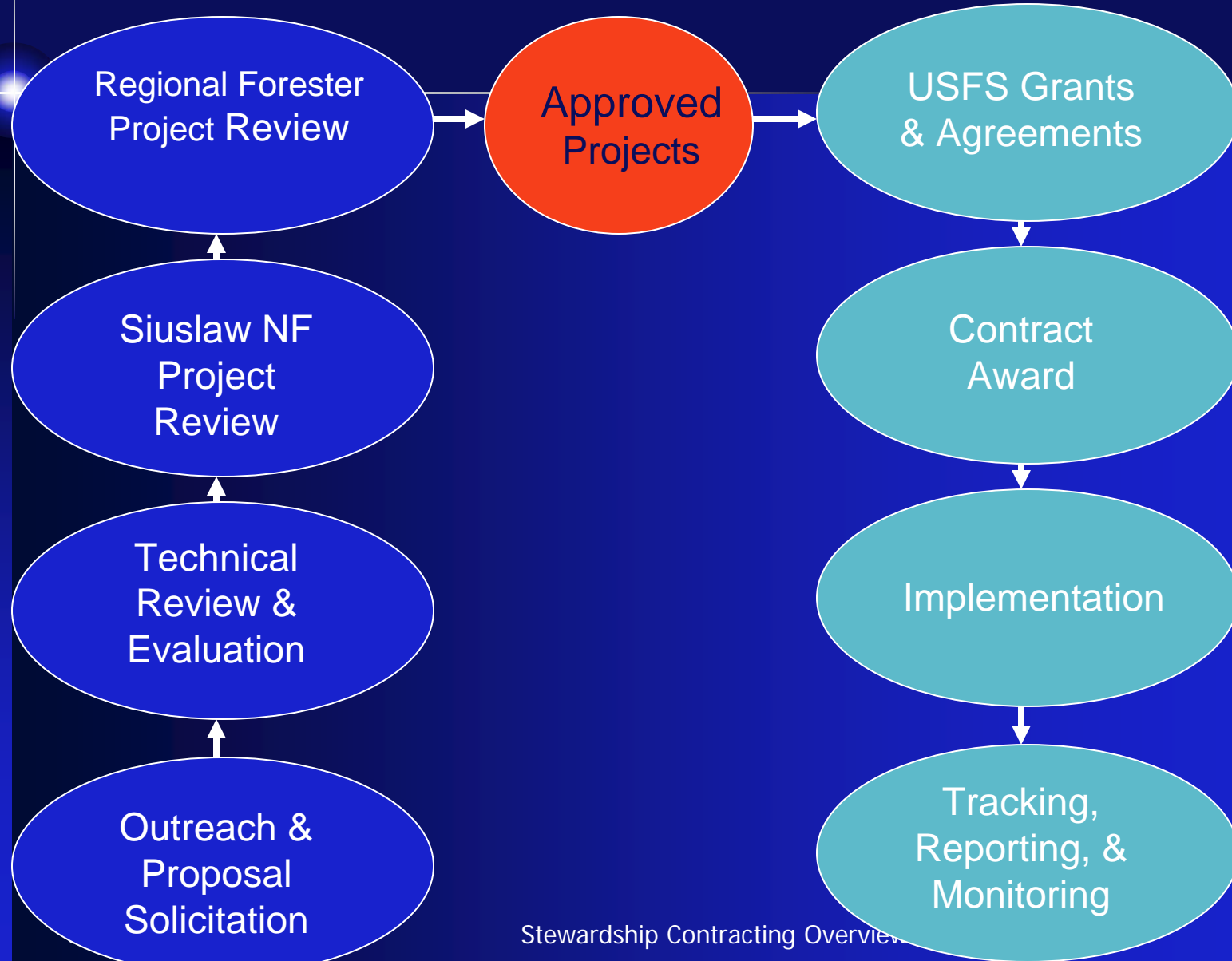


May 5, 2009

Tulare Case Studies



# Funding Process



# Project Types

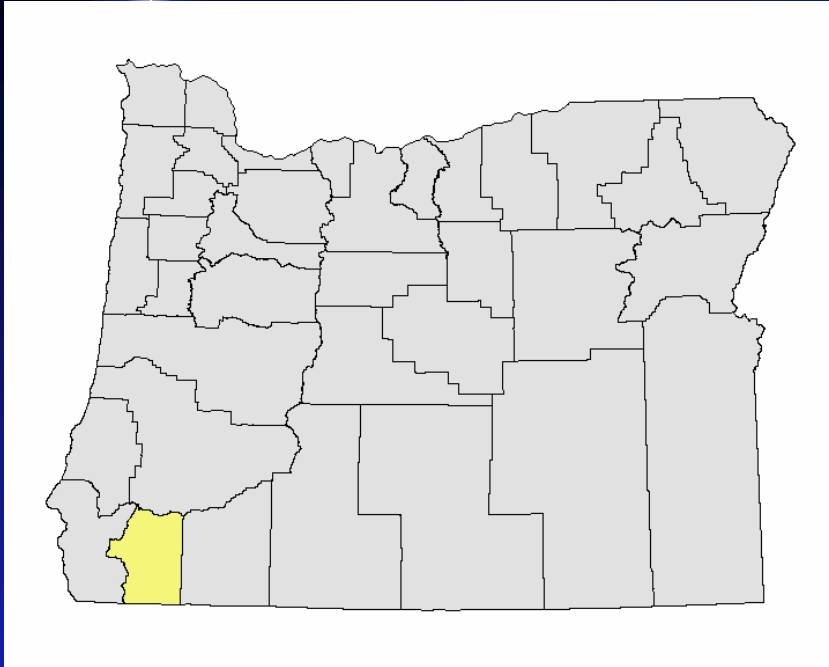
- Forest Service LSR treatments
- Forest Service retained receipts projects
- Wyden Amendment projects



# Lessons Learned

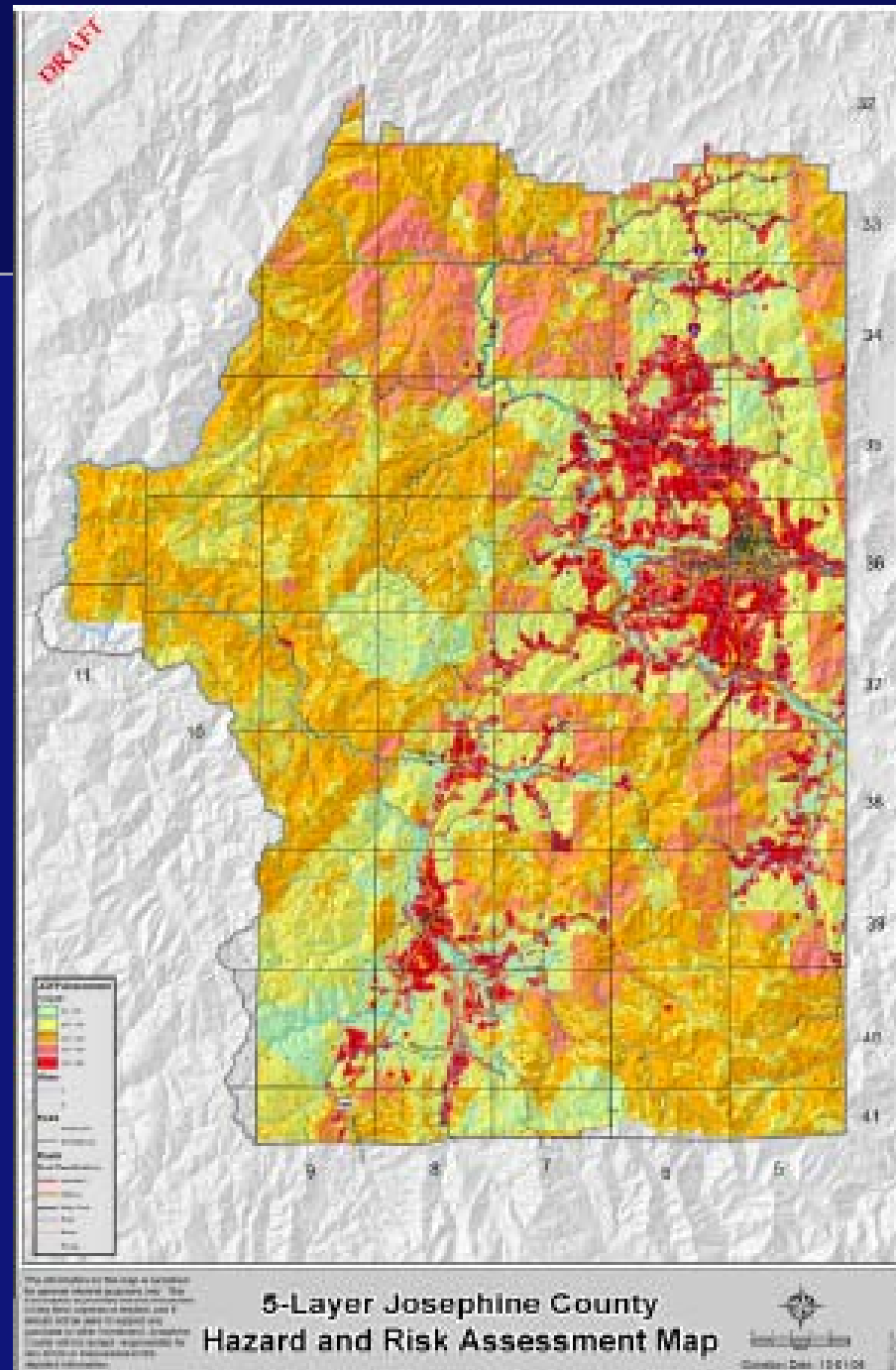
- Strong partners make the watershed approach possible
  - Achieving habitat goals on the public uplands
  - Investing in fisheries on the private lowlands
- Stewardship funds are pooled on the Forest and distributed on merit

# Josephine County



# Community Fire Plan

May 5, 2009



# Plan Goals

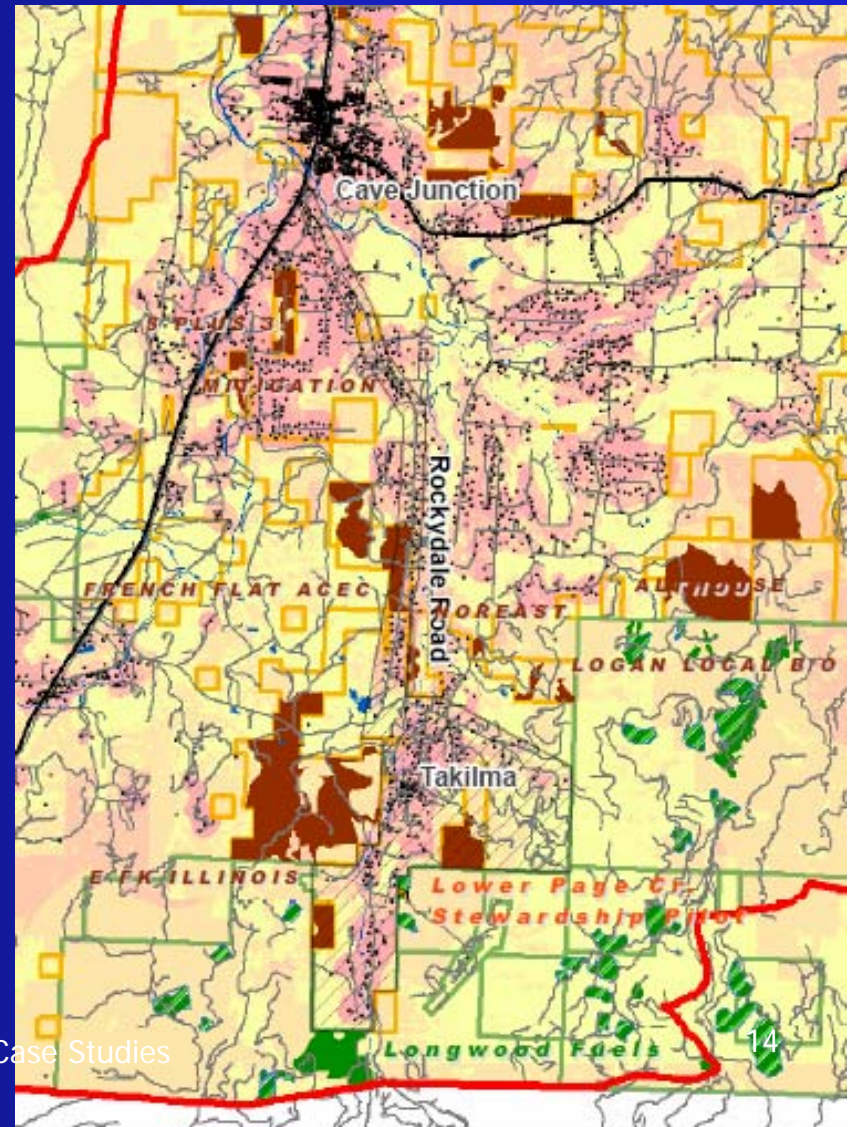
- Landscape treatment
- Coordinate defensible space and fuels reduction projects on public and private land
- Increase access to fuels reduction resources



Photo by Neil Benson, Josephine County Integrated Fire Plan

# Josephine County Stewardship Group

- Use stewardship to implement high priority projects in Fire Plan
- Focus on common ground
- Promote stable local economy
  - Grow local contractors
  - Foster biomass utilization
- Involve broader community



May 5, 2009

Tulare Case Studies

# Start small and scale up

- Meyers Camp--233 acres
  - Simple but went no bid
- Page Mtn.--650 acres
  - Narrow in scope but collaborative
- Butcherknife Slate--6000 acre
  - Broader in scope and collaborative
- Hope Mtn Stewardship Agreement
  - In place when Stimulus \$\$ showed up!

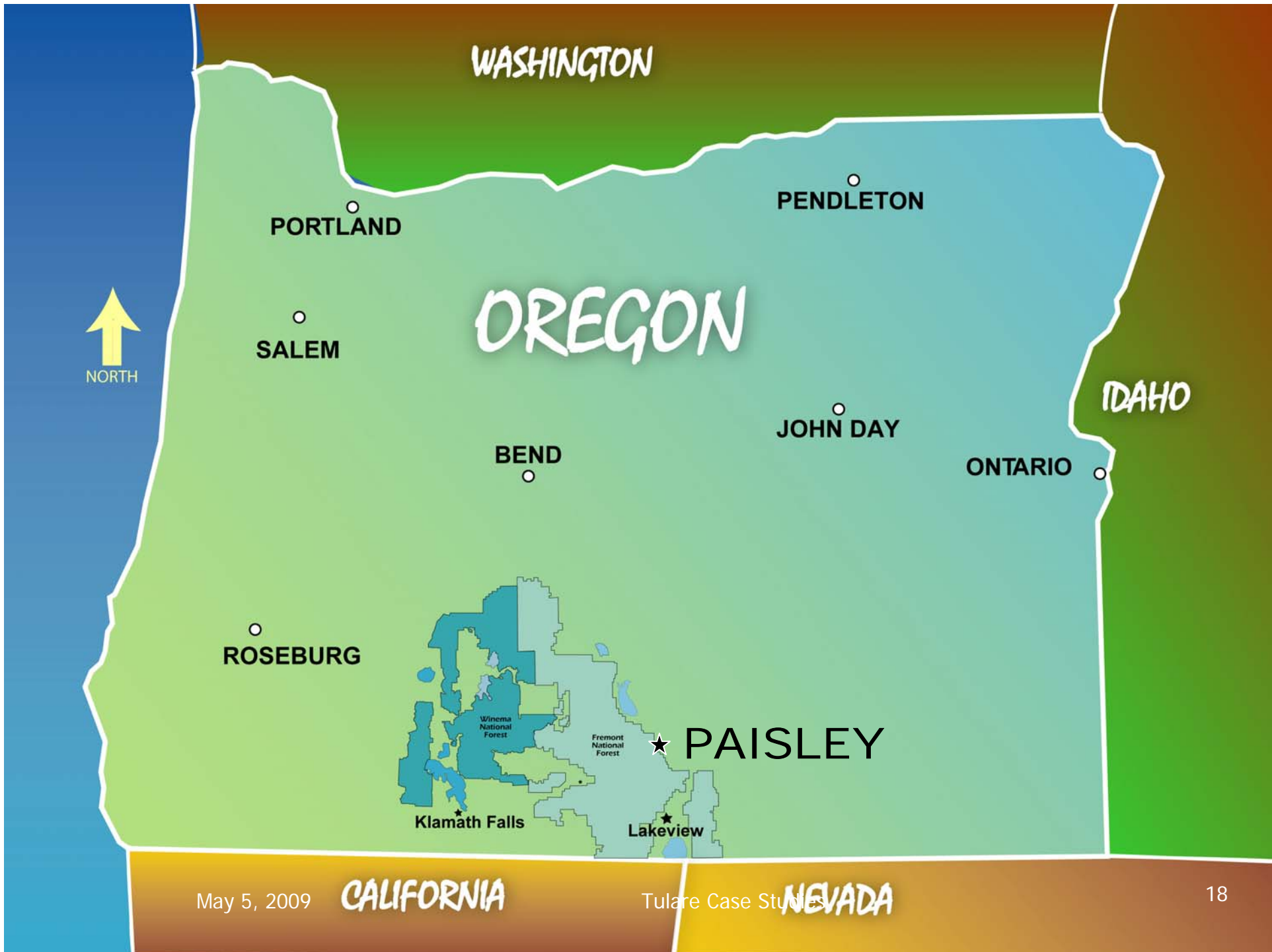
# Josephine County

- Strong forum for collaboration
- Still struggling small diameter removal
- Partners working together outside of stewardship
  - Hope Mtn. Demonstration project
- Capturing lessons learned through monitoring



May 5, 2009

Tulare Case Studies





*Old growth*



*Cattle grazing*



*Healthy riparian areas*

May 5, 2009



Tulare Case Studies

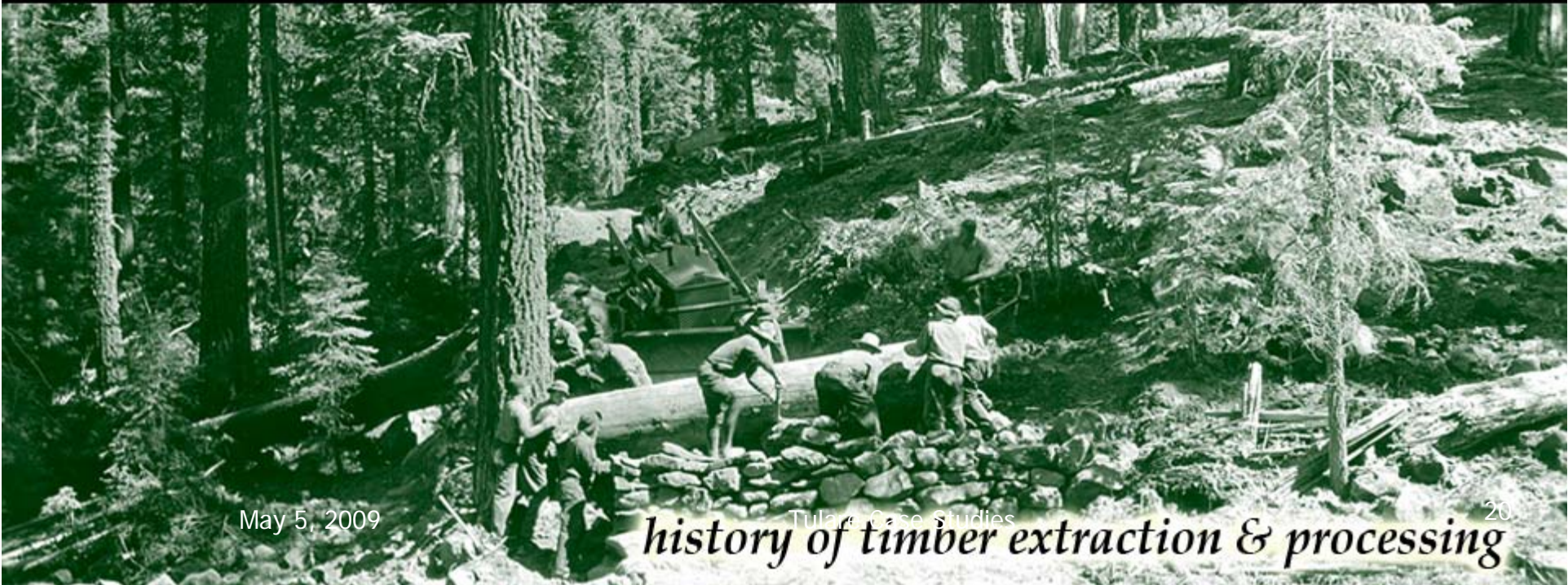
*Diversity of wildlife*



*overstocked stands*



*wildfires*



May 5, 2009

Tulsa Case Studies

*history of timber extraction & processing*

# Lakeview Federal Sustained Yield Unit

- Foster community stability by providing a stable supply of timber to local mills
- Local mills have right of first refusal on federal timber
- Paisley mill closes in 1996.



Paisley's Fremont Sawmill, located along Chewaucan River, is a major employer.

May 5, 2009

Tulare Case Studies

# Community Responds to Mill Closure

- Sustained Yield Unit Committee explores options...
  - Forest certification...
  - Collaboration with multiple interests
  - Reauthorization of SYU as federal Stewardship Unit.

# New Avenues

- Increased interest in fuels reduction and woody biomass
- Strong industry and environmental partners
- Sawmill expressing interest in small-diameter utilization
  - Needs a steady supply of small diameter material
- Forest management hindered without markets for restoration by-product

# Lakeview Stewardship Strategy

- Strategy accelerated rate of fuels reduction & restoration
  - From 3,000 acres to 8,000 acres annually
- Identified a biomass facility as a promising opportunity

# Initial Stewardship Project

- Repackaged timber sale
  - 8 mmbf with a value of \$750,000
  - Thinning, road closure, aspen release
  - Extract small diameter trees to the landing
- Theory is applied and it works!



# Industry Invests

- Collins Companies Small Diameter Log Sawmill in Lakeview
- Memorandum of Understanding Signed
  - Minimum of 3,000 treatment acres per year inside and outside of the Lakeview Federal Stewardship Unit
  - Test ways of reducing the cost of business



# Sustained Yield Restoration Stewardship Project

- Indefinite Delivery Indefinite Quantity Stewardship Contract, IRSC
- Multi-year contract, with a 10 year duration
- Single Prime Contractor
- Applies only to Lakeview Federal Stewardship Unit
  - Prioritized Treatment of Watersheds
  - NEPA is not complete for all 10 years worth of work
- Scope of the Contract
  - Minimum orders of \$100,000 and \$25,000,000 maximum

# Lakeview Conclusions

- Committed partners created new opportunity
- Collaboration enabled landscape-scale approach
- 10-year contract provided surety of supply for private investment
- Market for low-value material lowers unit costs

Thanks! Questions?

