



Forest Land Ownership Patterns

Michael De Lasaux

Natural Resources Advisor, RPF #2321

University of California Cooperative Extension

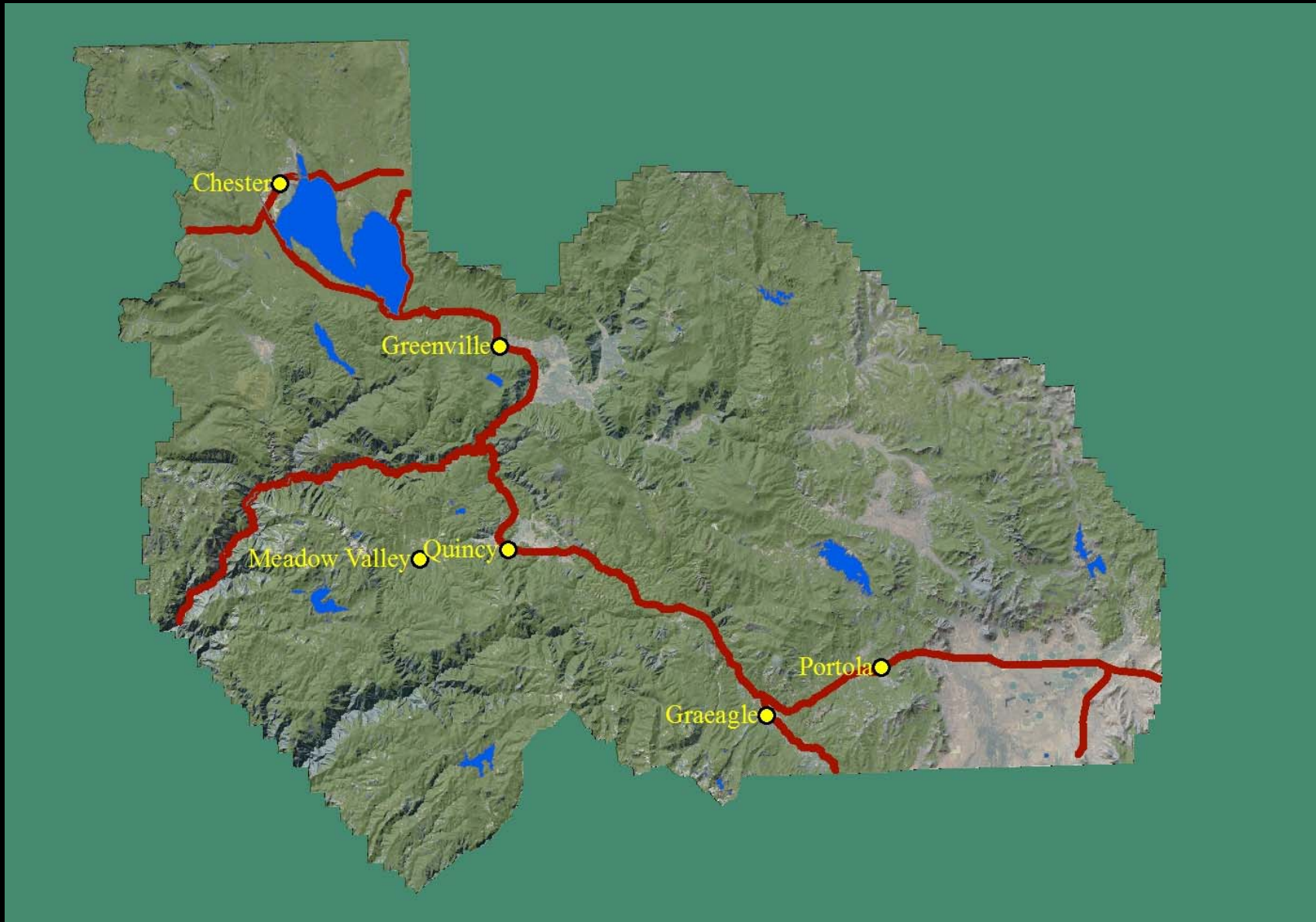
Plumas & Sierra Counties

WOODY BIOMASS UTILIZATION WORKSHOP

May 25th & 26th, 2010

Mineral Building, Plumas-Sierra County Fairgrounds

Forest Cover

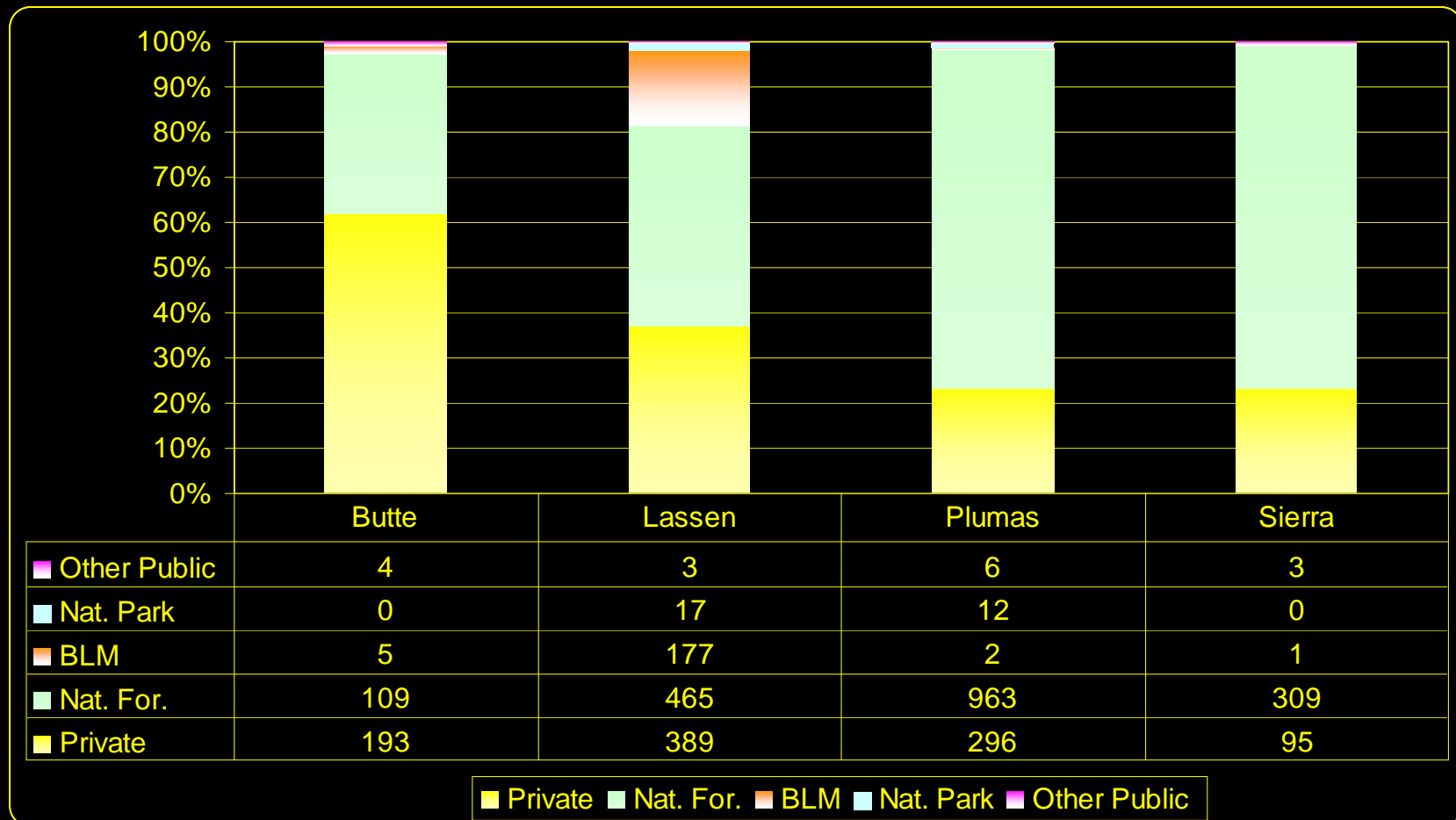


National Forest



Distribution of Coniferous Forest by County

1,000s of acres



Sources: Teal Data Center Ownership (Govtown 1999)
FRAP Multi source landcover data v. 02_2 (Fveg 02_2g, 2002)

So...?

- Public vs private
- While publicly owned land may be proportionately larger than private there are socio-political issues that may constrain utilization
- Other constraints include topography, sensitive habitat and water bodies.
- Safe to say that there is potential to sustainably harvest more biomass from each of the ownership classes.

Questions??