

# ***Biomass and the Changing Face of Forest Communities***



# Forest Communities – Social Relations

- Biomass is about community
- Structural Elements
  - Habitual interactions – political, social, economic
  - Cultural logics – vested interest and norms
- Biomass Utilization Strategies
  - Economic diversity
  - Workforce training
  - Product marketing

# Forest Communities - Ecological





# Reconciling the Past and Present

- Adjusting our logics to fit:
  - Shifting timber markets and price swings
  - Industrial modernization
  - Environmental regulations
  - Combating parochialism and adopting bioregionalism
  - Investment in self-reliance strategies
  - Old and young alike

# Historical Use Presents Limitations





PRESCRIBED  
FIRE  
AHEAD



# Community Restructuring

- Community structure in the service economy
- From gyppo to what?
- Envisioning biomass products
  - Utilization efficiency
  - Diversity of products
  - Energy as a last resort
- Bioregionalism – how can rural communities remold this concept to a useful purpose?









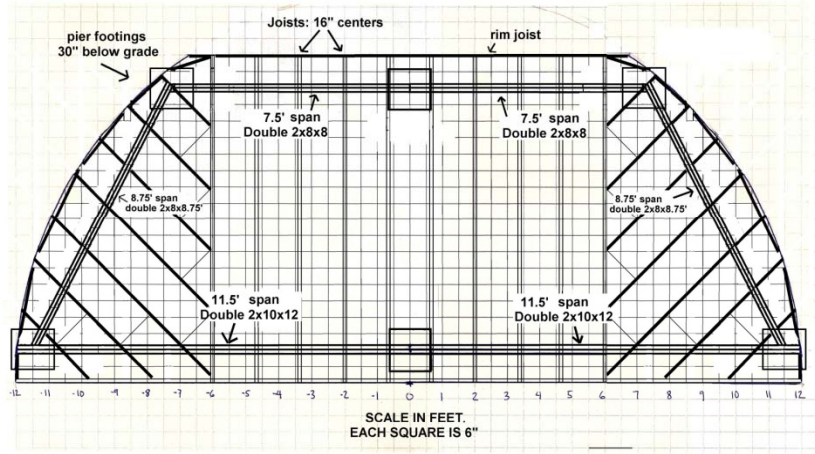








# Bioregional Partners



Engineers



CHP Hybrids

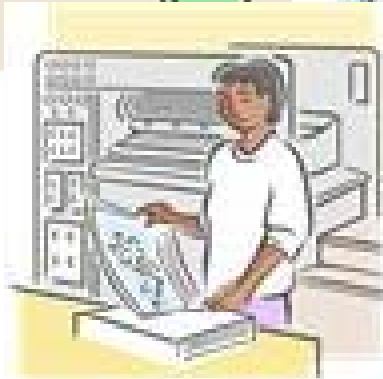


Oregon Institute of Technology  
College of the Siskiyou  
Central Oregon Community  
College  
Klamath Community College



Small Business  
and Rural  
Development

Secondary workers and the economy  
The Multiplier Effect!!!!



Primary contractors

Loggers

Construction workers

Cabinetmakers

Biofuel – firewood and gasification